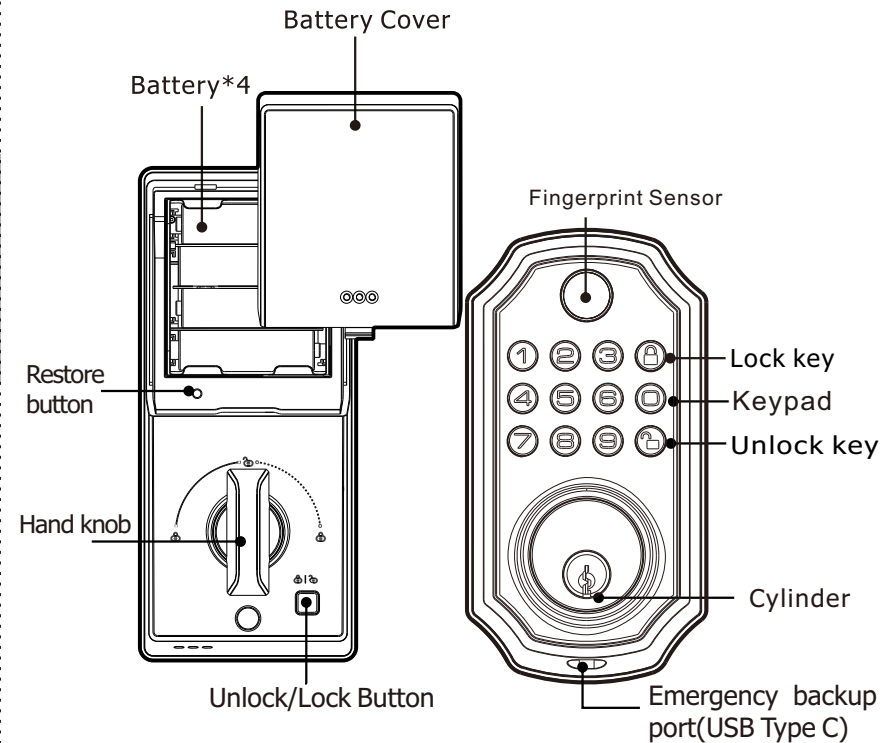
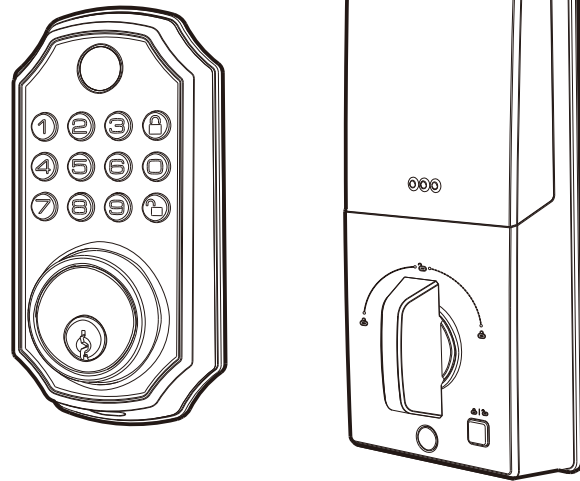


BULIST

Smart Lock Product Manual (UD01S)



Interior Part

Exterior Part

Part 1. Apperance display

Part 2. Feature definition

PIN code unlock

- Up to 50 groups of user code (6-10 digital codes)
- The default user code is "123456"

APP unlock

- Open and close the lock remotely through APP
- Generate one-time code through APP

Anti-peeping code

- Enter random numbers before and after the correct code

1325 147258 902313
user code
fake code

Fingerprint unlock

- Up to 50 groups of fingerprint

APP remote monitoring

- View unlock records remotely
- Remotely check the door lock status
- Remotely check the battery level

Auto Lock

- Automatically lock after 10 seconds delay
- Delay time range 10 to 99 seconds

Emergency Key

- When the lock fails or the battery is dead, the key can be used to open the lock
- It is recommended to leave the keys in the office or in the car

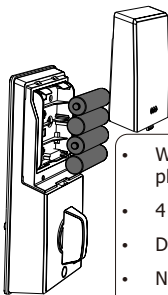
Voice guidance

- Live voice assistance
- Support 3 levels of volume adjustment

Standby Power

- Backup power supply DC 5V, USB Type C interface
- The mobile phone can be used as an emergency power supply (need to support OTG function)

Part 3. How to supply power



- When the door lock gives a low battery alarm, please replace the battery.
- 4 AA alkaline batteries
- Do not mix old and new batteries
- New battery lasts approximately one year (lock or unlock 10 times a day)



Emergency backup port provides backup power when the battery dies

Part 4. How to local setting

Add user



Press 1 Key and unlock Key

Please enter a new user code and unlock key

Please enter the same code and unlock key

NULL



Add user, Please enter a new password

Please enter a new password

Please enter the new password again

Added successfully No.000

Instructions for adding user codes for the first time



Press 1 Key and unlock Key

Please enter a manage code or fingerprint

Please enter the new code or fingerprint, new code needs to be entered twice, fingerprint needs to be registered 5 times



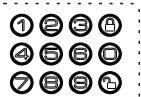
Add user, Authentication administrator

Add user, Please enter your fingerprint or password

Added successfully

Instructions for adding a new user code or fingerprint if you already have one

Auto lock setting



Press 2 Key and unlock Key

NULL

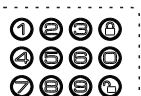


Automatic locking setting, Authentication administrator

Automatic locking setting close*

*Set it again, the status will be set to open

Bluetooth connection



Press 3 Key and unlock Key

Open Tuya APP

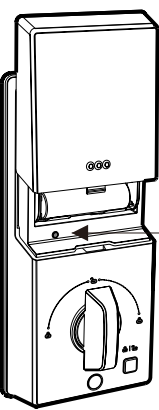


Authentication administrator

Distributing network*

*You need to configure the user password before Bluetooth connection.

Restore factory setting



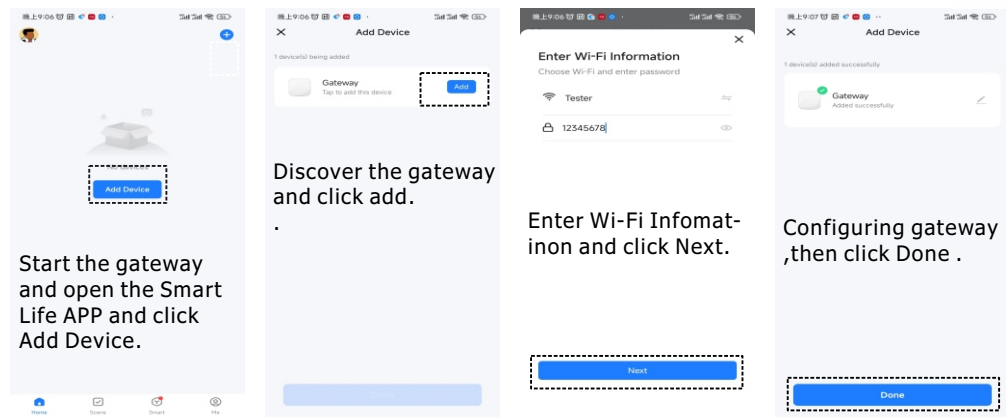
Press and hold restore button for five seconds.

Part 5. How to use APP

Download APP

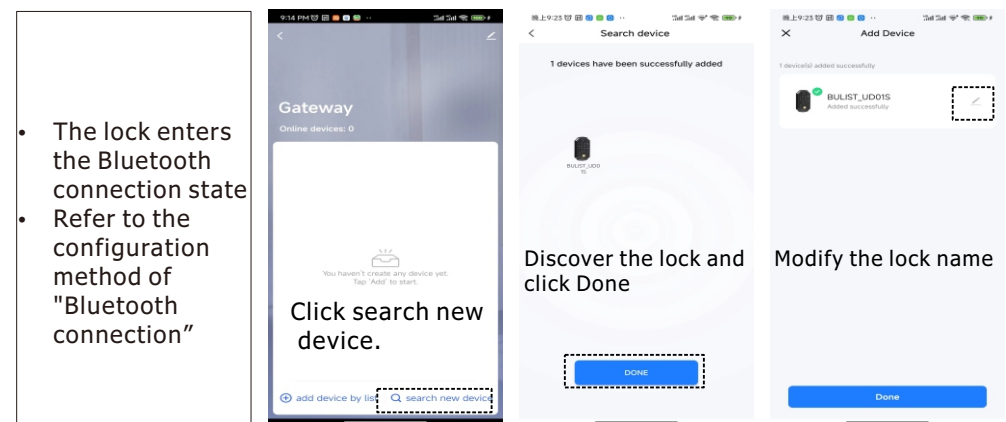
Please download the smart life APP in the APP store.

Add Gateway

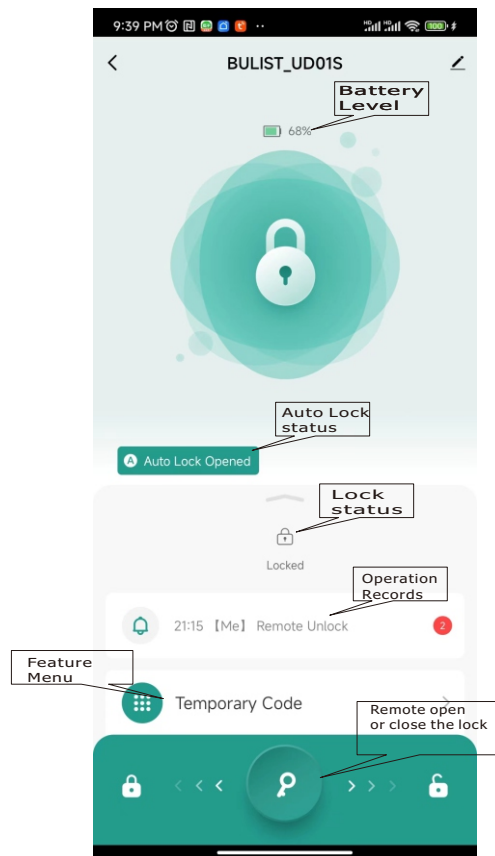


If the gateway cannot be discovered, you can press and hold the gateway button for 5 seconds to restore the factory settings, and then try again.

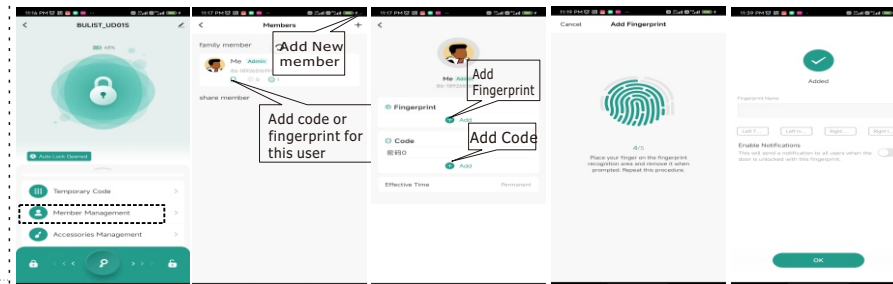
Add Lock



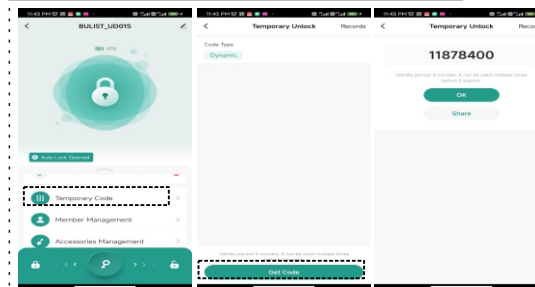
Main Screen



Add User

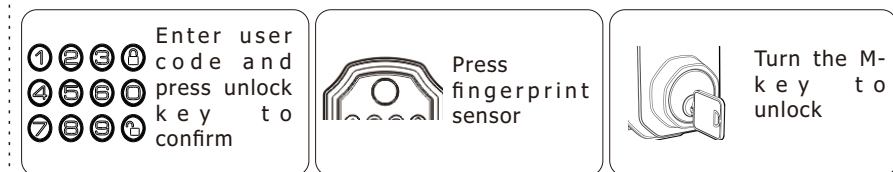


Temporary Code

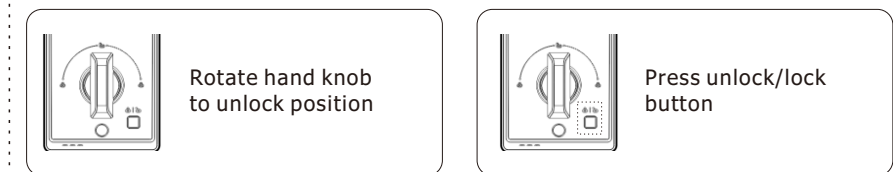


Part 6. How to use

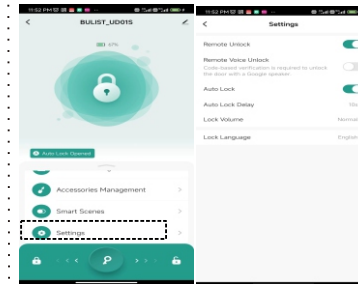
Outdoor unlock



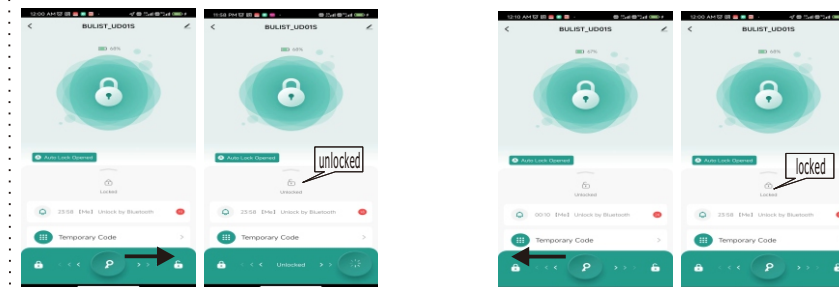
Indoor unlock



System setting

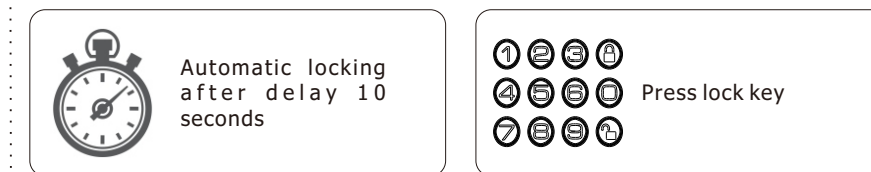


Remote open or close



Remote unlocking may time out due to network connectivity. Just unlock it again

Outdoor lock



Indoor lock



Part 7. FCC Statement

Changes or modifications not expressly approved by the party responsible for compliance could void the user's authority to operate the equipment.

This equipment has been tested and found to comply with the limits for a Class B digital device, pursuant to Part 15 of the FCC Rules. These limits are designed to provide reasonable protection against harmful interference in a residential installation. This equipment generates uses and can radiate radio frequency energy and, if not installed and used in accordance with the instructions, may cause harmful interference to radio communications. However, there is no guarantee that interference will not occur in a particular installation. If this equipment does cause harmful interference to radio or television reception, which can be determined by turning the equipment off and on, the user is encouraged to try to correct the interference by one or more of the following measures:

- Reorient or relocate the receiving antenna.
 - Increase the separation between the equipment and receiver.
 - Connect the equipment into an outlet on a circuit different from that to which the receiver is connected.
 - Consult the dealer or an experienced radio/TV technician for help.
- This device complies with part 15 of the FCC rules. Operation is subject to the following two conditions (1) this device may not cause harmful interference, and (2) this device must accept any interference received, including interference that may cause undesired operation.

QUALIFIED CERTIFICATE

MODEL: _____
CHECKER: _____
DATE: _____

If you have any questions during the use of the product, please contact our after-sales service team, thank you.

E-mail: bulist.services@outlook.com