

WE APPRECIATE FEEDBACK!

Please allow our customer service team to help with any issues before you leave a review.



/atomismartino



/atomi_smart



@atomi.smart

Need assistance?



DO NOT RETURN THIS
PRODUCT TO THE STORE

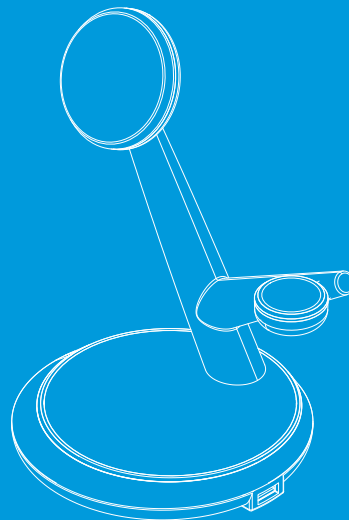
Call 1-800-757-1440
Mon-Fri 9:00 a.m. - 5:00 p.m. EST (U.S.)
or email us at info@atomiusa.com



Magnetic Wireless Device Charging Stand

Qi2 Phone Charger + Watch Charger +
Wireless Earphones Charger +
USB-C / USB-A Ports + Dimmable Night Light

User Guide



Date Code:11/24

Thank you for purchasing the Atomi Magnetic Wireless Charging Stand

Atomi's Magnetic Stand is a one-stop wireless charging station for your accessories. You can wirelessly charge your phone, watch, and earphones in one convenient location. Plus, the built-in dimmable night light creates a glow so you can easily access your devices in the dark.

What's Inside

Magnetic Wireless Device Charging Stand

(2) Magnetic Stickers

3ft. USB-C Cable

USB-C Wall Charger

Specifications

Input: 12VDC 2.5A

Wireless Charging for Qi2-compatible Phones: 15W

Wireless Charging for Earphones: 3W

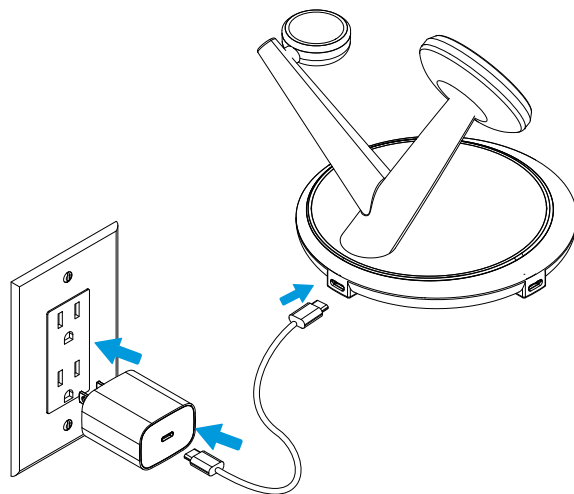
Wireless Charging for Watch: 3W

USB-C/USB Output: 5VDC 1A

Total Output: 25W max.

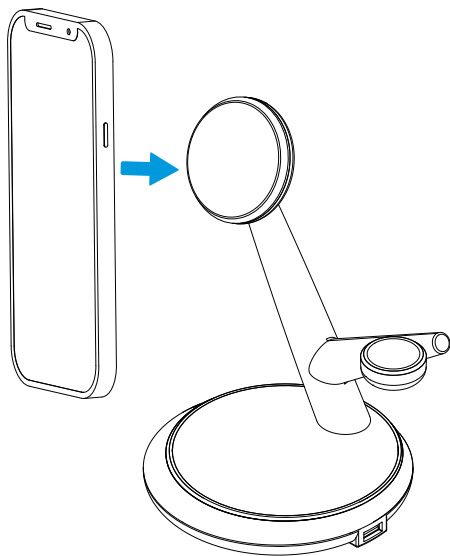
Powering your Magnetic Wireless Charging Stand

Connect the included USB-C cable to the charging port on the back of your Magnetic Wireless Charging Stand. Then connect the other end of the USB-C cable to the USB-C Wall Charger (included).



Magnetic Charging

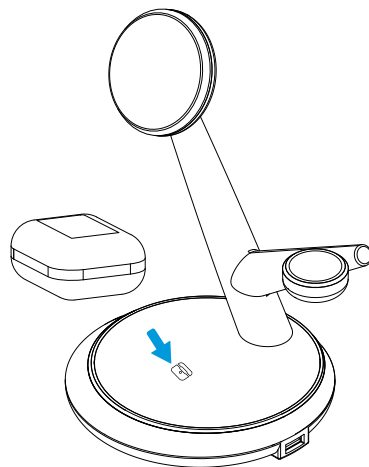
Place your phone near the magnetic area on the Charge Stand. It will attach to your phone and begin charging automatically.



Charging your Wireless Earphones

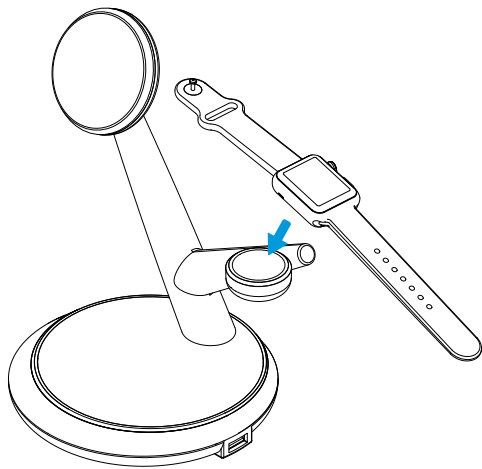
Place your wireless earphones case on the charge pad and it will begin charging automatically.

Note: This pad is to charge the earphones only.

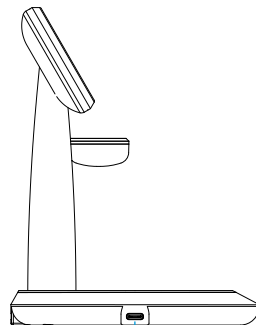


Charging your Watch

Place your watch near the magnetic area on the Charge Stand. It will attach to your watch and begin charging automatically.

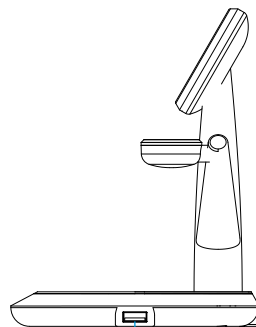


USB Charging Ports



USB-C Port

5 watts of power output

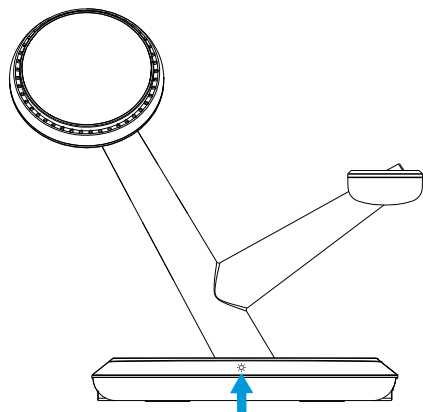


USB-A Charge Port

5 watts of power output

Using the Night Light

With your Charge Stand powered ON, the default light is warm white. Tap the base for natural light, tap again for cool white light, and tap a third time to turn the night light OFF. Hold down the button for three seconds to adjust the brightness of the light.



NOTE: This equipment has been tested and found to comply with the limits for Class B digital device, pursuant to part 15 of the FCC Rules. These limits are designed to provide reasonable protection against harmful interference in a residential installation. This equipment generates, uses and can radiate radio frequency energy and, if not installed and used in accordance with the instructions, may cause harmful interference to radio or television reception, which can be determined by turning the equipment off and on, the user is encouraged to try to correct the interference by one or more of the following measures:

- Reorient or relocate the receiving antenna.
- Increase the separation between the equipment and the receiver.
- Connect the equipment into an outlet on a circuit different from that to which the receiver is connected.
- Consult the dealer or an experienced radio/TV technician for help.

Note: For a Class A digital device, statements of 15.105(a) must be included when appropriate for the device in question.

RF Exposure Information

This equipment complies with FCC radiation exposure limits set forth for an uncontrolled environment. This equipment should be installed and operated with minimum distance 20cm between the radiator and your body.

NOTE 2: Any changes or modifications to this unit not expressly approved by the party responsible for compliance could void the user's authority to operate the equipment.

Supplier's Declaration of Conformity 47 CFR § 2.1077 Compliance Information

Unique Identifier

Trade Name: atomi

Model No.: AT2519

Responsible Party – U.S. Contact Information

Atomi Inc.

10 W. 33rd St. Suite 520, New York, NY10001

212-239-0909

FCC Compliance Statement

This device complies with Part 15 of the FCC Rules. Operation is subject to the following two conditions: (1) This device may not cause harmful interference, and (2) this device must accept any interference received, including interference that may cause undesired operation.

Safety Information

1. Read these instructions carefully for best use.
2. DO NOT use the Magnetic Wireless Charging Stand near water or expose it to rain or moisture.
3. DO NOT use the Magnetic Wireless Charging Stand near open flames, such as candles, heat sources, radiators and stoves.
4. Only clean the Magnetic Wireless Charging Stand with a dry cloth.
5. Caution: Risk of electric shock. Grounding continuity must be maintained.
6. For connection to a power supply not in the U.S.A., use an attachment plug adapter of the proper configuration for the power outlet, if needed.
7. Please check prior use, if output voltage and current of the power supply is suitable for the product.
8. Children should be supervised to ensure that they do not play with the appliance.

For questions or concerns, email us at info@atomiusa.com

Manufactured and marketed by Atomi Inc.

10 West 33rd St., New York, NY 10001

atomi® is a registered trademark of Atomi Inc.

Designed by Atomi in New York, Made in China

Three-year limited warranty from the date of purchase against defects in material and workmanship.