

WE APPRECIATE FEEDBACK!

Please allow our customer service team to help with any issues before you leave a review.



/atomismartino



/atomi_smart



@atomi.smart

Need assistance?



DO NOT RETURN THIS
PRODUCT TO THE STORE

Call 1-800-757-1440

Mon-Fri 9:00 a.m. - 5:00 p.m. EST (US)
or email us at info@atomiusa.com



Multi-Device Qi Charge Tower

15W Qi Charge Pad + AC Outlet +
20W USB-C PD Port + 12W USB-C Port +
4 Smart USB Ports

User Manual



Date Code: 04/22

Thank you for purchasing the Atomi Multi-Device Qi Charge Tower

Tame unruly charging wires on your desktop with this multi-port power station. It efficiently charges almost every type of device with a built-in 15W Qi fast charger, a 20W USB-C PD port, a USB-C port, four smart USB ports, and an AC outlet. Use with your smartphone, tablet, laptop, earbuds, and more.

What's Inside

Multi-Device Qi Charge Tower

Specifications

Current Tap Rating: 125V~, 60Hz, 10 A, 1250W

Wireless Output: 15W

USB Output: 5V=2.4A (Each Port)

USB and USB-C Total Output Current: 4A max

USB-C Output: 5V=2.4A

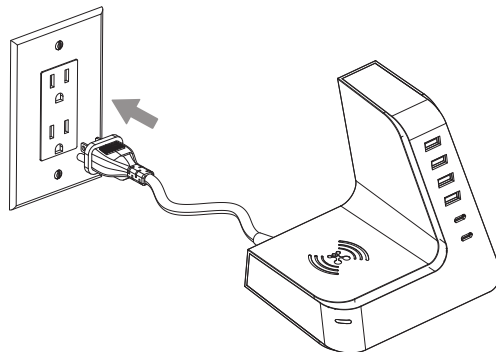
PD Output: 5V=3A, 9V=2.22A, 12V=1.67A

Total Output: 55W max

Charging Your Devices

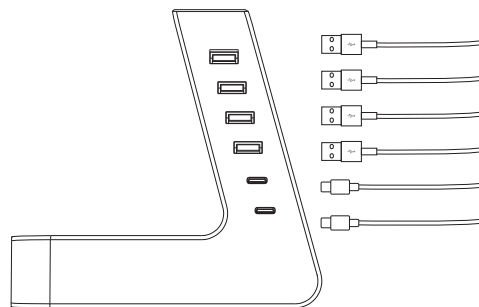
1

Plug into any nearby outlet.



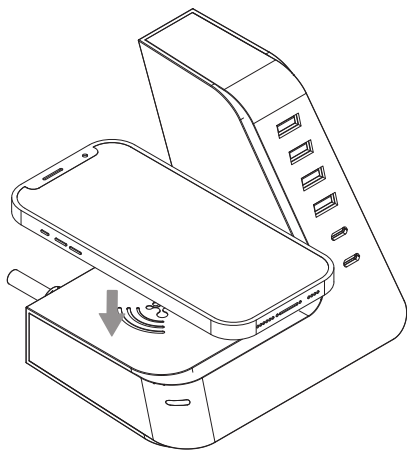
2

Charge up to 6 USB devices



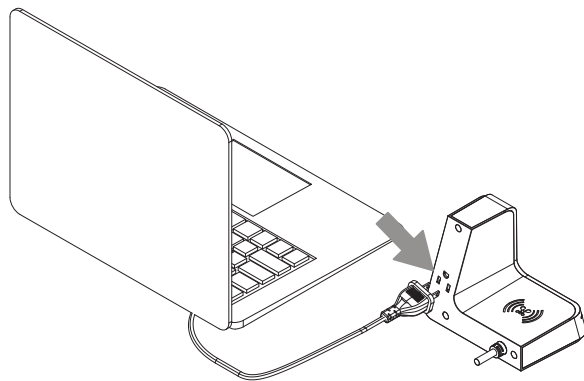
3

Place the device on the designated charging area of your Multi-Device Qi Charge Tower. Charging will begin on contact.



4

Plug in a device to the built-in AC power outlet.



FCC statement:

This device complies with Part 15 of the FCC rules. Operation is subject to the following two conditions: 1) this device may not cause harmful interference, and 2)

this device must accept any interference received, including interference that may cause undesired operation.

Note: This equipment has been tested and found to comply with the limits for a Class B digital device, pursuant to part 15 of the FCC Rules. These limits are designed to provide reasonable protection against harmful interference in a residential installation.

This equipment generates uses and can radiate radio frequency energy and, if not installed and used in accordance with the instructions, may cause harmful interference to radio communications. However, there is no guarantee that interference will not occur in particular installation. If this equipment does cause harmful interference to radio or television reception, which can be determined by turning the equipment off and on, the user is encouraged to try to correct the interference by one or more of the following measures:

--Reorient or relocate the receiving antenna.

--Increase the separation between the equipment and receiver.

--Connect the equipment into an outlet on a circuit different from that to which the receiver is connected.

--Consult the dealer or an experienced radio/TV technician for help.

Changes or modifications not expressly approved by the party responsible for compliance could void the user's authority to operate the equipment. Radiation Exposure Statement

This device complies with FCC RF radiation exposure limits set forth for an uncontrolled environment. This transmitter must not be co-located or operating in conjunction with any other antenna or transmitter. During the operation of device a distance of 15 cm surrounding the device and 20 cm above the top surface of the device must be respected.

Caution: Any changes or modifications to this device not explicitly approved by manufacturer could void your authority to operate this equipment.

Safety Information

1. Read these instructions carefully for best use.
2. DO NOT use the Multi-Device Qi Charge Tower near water or expose it to rain or moisture.
3. DO NOT use the Multi-Device Qi Charge Tower near open flames, such as candles, heat sources, radiators and stoves.
4. Only clean the Multi-Device Qi Charge Tower with a dry cloth.
5. Caution: Risk of electric shock. Grounding continuity must be maintained.
6. For connection to a power supply not in the U.S.A., use an attachment plug adapter of the proper configuration for the power outlet, if needed.
7. Please check prior use, if output voltage and current of the power supply is suitable for the product.
8. Children should be supervised to ensure that they do not play with the appliance.

For questions or concerns, email us at info@atomiusa.com

Manufactured and marketed by Atomi Inc.

10 West 33rd St., New York, NY 10001

atomi™ is a trademark of Atomi Inc.

Designed by Atomi in New York, Made in China

One-year limited warranty from the date of purchase against defects in material and workmanship.