

# Set Up Guide



CamerEye Edge is certified by IAPMO R&T  
against ASTM Safety Specification F2208.



CamerEye Edge is certified by CSA  
against UL 2017 Safety Specification.



**CAMEREYE™**

## **Angarak Inc.**

4640 Cass Street #91275  
San Diego, California 92109  
**800.906.2810**

## Power Requirements

The camera system requires a 12V/5A (60W) power supply and the siren requires a 5V/1A (5W) input.

## Recommended distance from transmitter to receiver

We recommend that the camera is installed between **10 and 60 ft** from an edge of the pool to ensure reliable operations. Occlusions and conditions may affect alarm performance.

**This device is NOT intended to replace any other safety consideration; that is, adult supervision, lifeguards, fences, gates, pool covers, locks, and so forth, and some devices may not detect gradual entry.**

The provision of the alarm equipment may be affected by any number of external factors that are not in CamerEye's control, including without limitation, environmental conditions, interruption and interference by persons in the pool, loss of signal, interruption of feedback and communication problems etc. Any one of such factors may create false-positives or false-negatives in the detection of alarms and the general quality and performance of the monitoring services and equipment. We assume no liability or responsibility for damage or injury to persons or property arising from any use of the monitoring services and equipment.

Furthermore, the product is based on artificial intelligence, computer vision and camera technology and as such there may always be alarms that it may miss due to the inherent nature of the technology that is affected by many factors such as weather, light, water clarity, distance, shades, obstructions such as water features, body position, and more. The product is mainly designed to detect people above and in the water and as such may not always detect people if they do not pass the human detection model. If a user sets the area of alerting (sometimes referred to as ai smart fence), they acknowledge that the alerts/alarms are excluded outside the area drawn by the user on the app. Similarly, app notifications disabled or silenced or bypassed by the user can lead to inaccessibility of the information by the user.

## Guidelines for Camera Placement

### **Install cameras 6-12 feet from the ground.**

This height is low enough to capture fine details but high enough to cover more area of the pool.

### **Install cameras to fully cover the pool area.**

Ensure there are no blind spots in the entire pool regardless of the water depth. Consider installing multiple cameras if one camera cannot fully cover the entire pool.

### **Don't point cameras directly at the sun.**

Bright light causes glare and high contrast and can increase false detections or miss a true detection and hence reduce efficacy and reliability of the system. Consider the movement of the sun and angle your cameras for indirect light. Always prefer facing cameras South/North compared to East/West.

### **Is the Wi-Fi signal strong enough?**

If your Wi-Fi is weak or the stream is lagging, consider adding a Wi-Fi extender to the system. You can find our recommended Wi-Fi extenders on our website at the time of cart checkout.



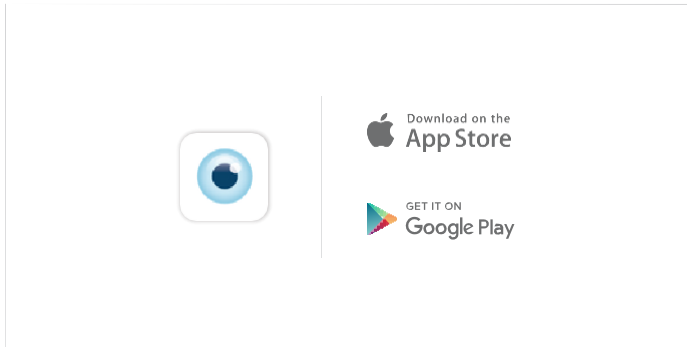
**Terms of Service**  
Appendix 1



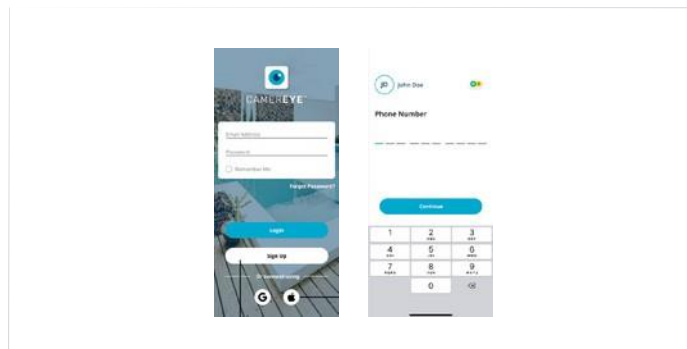
**Troubleshooting**  
Appendix 2

Today, we'll show you how to install the CamerEye Edge in four simple steps.

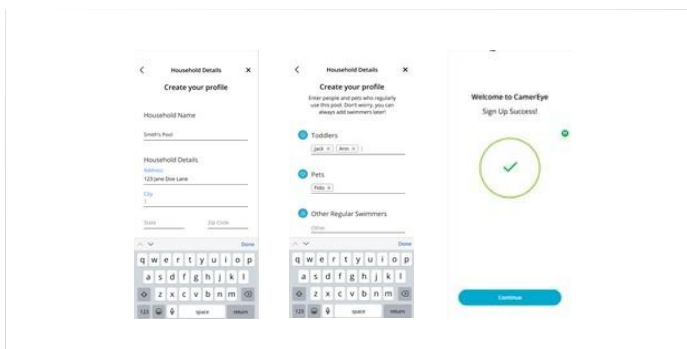
## STEP 1 - APP SET UP



Once the CamerEye Edge is unboxed, download CamerEye from the app store.



Login or Sign Up to create an account.

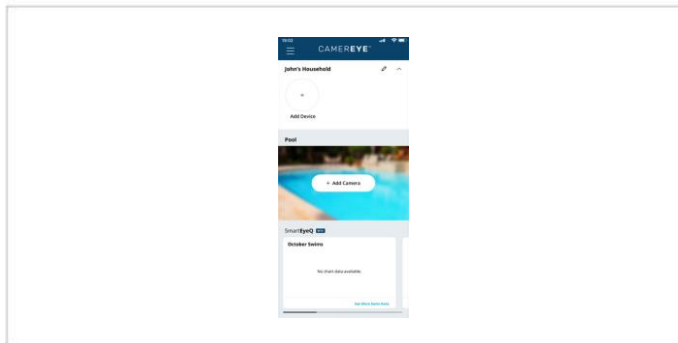


Fill the in details about the household where the camera is being installed.

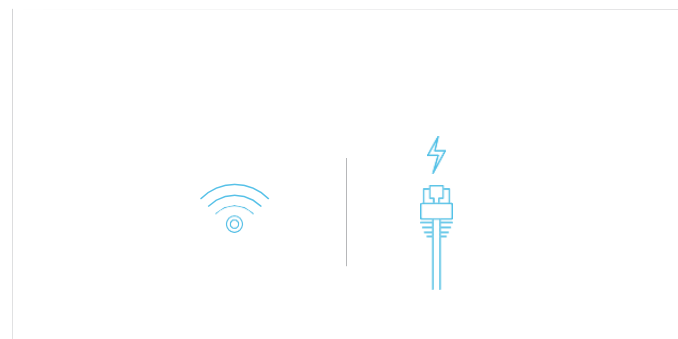
## STEP 2 - CONNECT TO THE INTERNET AND YOUR CAMEREYE ACCOUNT



Unscrew and open the back of the camera to connect the power over ethernet (PoE) or DC cable (PoE is recommended). Once connected, reattach the back of the camera and tighten the screws.

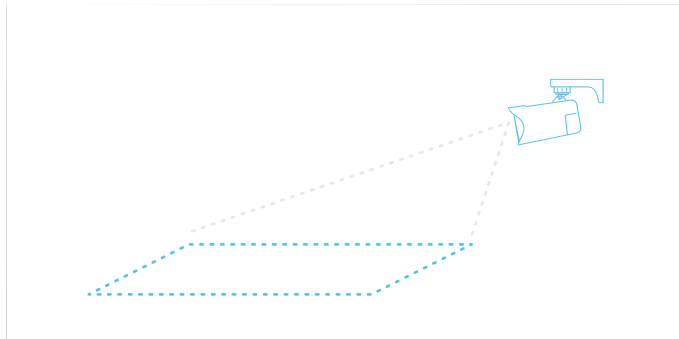


On the homescreen of your CamerEye app, click the “+ Add Camera” button.



Follow the instruction on your app to connect to the internet and your account using Wifi or PoE.

### STEP 3 - MOUNT YOUR CAMEREYE

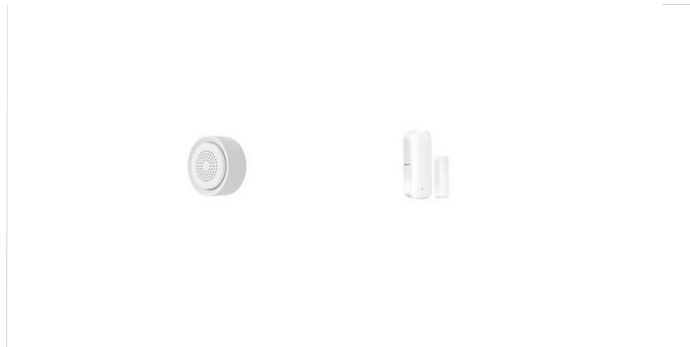


Choose a suitable location to mount the camera (ensure the camera's view covers the pool area without blind spots and avoid pointing directly at the sun). Using the provided template, mark and drill two holes, mount the bracket, and slide the camera into the bracket.



Adjust the camera position and angle as needed to ensure complete coverage, and tighten the screws. Camera installation is now complete.

## STEP 4 - INSTALL YOUR SIREN AND DOOR SENSOR



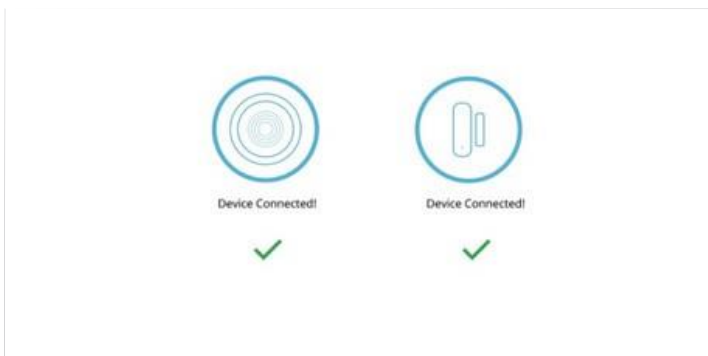
Next get your siren and door sensor ready.



Connect the siren's USB cable to a power source and open the back lid to locate the "reset" button needed configure with the app. Insert the CR123XA batteries and reattach the lid. Note that batteries may only be used for backup and it is recommended to always connect the USB power cable to meet safety codes and compliance.



And now set up the CamerEye EDGE door sensor. Open the back lid of the sensor, insert the two AAA batteries and reattach the lid. After setting up the door sensor via the app, use the double sided tape to attach the door sensor and the magnet. Make sure the sensor and magnet are on the same horizontal plane and the distance between the two arrows is no more than 1.5cm.



Connect the devices to the Wi-Fi network through the CamerEye app. You can now test the system by walking around the pool area to receive an audible alarm on the camera & siren. You should also receive a notification on your phone.

## **Federal Communication Commission Interference Statement**

This equipment has been tested and found to comply with the limits for a Class B digital device, pursuant to Part 15 of the FCC Rules. These limits are designed to provide reasonable protection against harmful interference in a residential installation.

This equipment generates, uses and can radiate radio frequency energy and, if not installed and used in accordance with the instructions, may cause harmful interference to radio communications. However, there is no guarantee that interference will not occur in a particular installation. If this equipment does cause harmful interference to radio or television reception, which can be determined by turning the equipment off and on, the user is encouraged to try to correct the interference by one of the following measures:

- . Reorient or relocate the receiving antenna.
- . Increase the separation between the equipment and receiver.
- . Connect the equipment into an outlet on a circuit different from that to which the receiver is connected.
- . Consult the dealer or an experienced radio/TV technician for help.

***FCC Caution:*** To assure continued compliance, any changes or modifications not expressly approved by the party responsible for compliance could void the user's authority to operate this equipment. (Example - use only shielded interface cables when connecting to computer or peripheral devices).

### ***FCC Radiation Exposure Statement***

This equipment complies with FCC RF radiation exposure limits set forth for an uncontrolled environment. This equipment should be installed and operated with a minimum distance of 20 centimeters between the radiator and your body.

This transmitter must not be co-located or operating in conjunction with any other antenna or transmitter.

The antennas used for this transmitter must be installed to provide a separation distance of at least 20 cm from all persons and must not be co-located or operating in conjunction with any other antenna or transmitter.

**The below caution, please put in the label. If couldn't put in the label, please put in user manual.**

This device complies with Part 15 of the FCC Rules. Operation is subject to the following two conditions:

- (1) This device may not cause harmful interference, and (2) This device must accept any interference received, including interference that may cause undesired operation.

## Industry Canada Statement

This device complies with Industry Canada licence-exempt RSS standard.

Operation is subject to the following two conditions: (1) this device may not cause interference, and (2) this device must accept any interference, including interference that may cause undesired operation of the device.

Le présent appareil est conforme aux CNR d'Industrie Canada applicables aux appareils radio exempts de licence. L'exploitation est autorisée aux deux conditions suivantes : (1) l'appareil ne doit pas produire de brouillage, et (2) l'utilisateur de l'appareil doit accepter tout brouillage radioélectrique subi, même si le brouillage est susceptible d'en compromettre le fonctionnement.

### IC Radiation Exposure Statement:

This equipment complies with IC RSS-102 radiation exposure limit set forth for an uncontrolled environment. This equipment should be installed and operated with minimum distance 20cm between the radiator and your body.

Cet équipement est conforme aux CNR-102 d'Industrie Canada. Cet équipement doit être installé et utilisé avec une distance minimale de 20 centimètres entre le radiateur et votre corps. Cet émetteur ne doit pas être co-localisé ou opérant en conjonction avec une autre antenne ou émetteur. Les antennes utilisées pour cet émetteur doivent être installées et fournir une distance de séparation d'au moins 20 centimètres de toute personne et doit pas être co-située ni fonctionner en conjonction avec une autre antenne ou émetteur.





CAMEREYE™

[WWW.CAMEREYE.AI](http://WWW.CAMEREYE.AI)