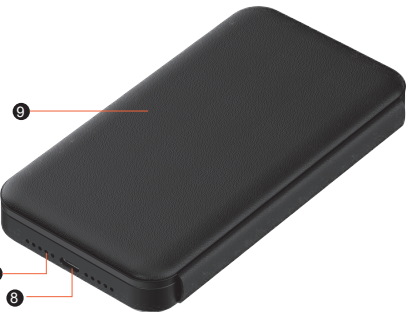




Product Introduction

The multi-function magnetic wireless charger suits Qi standard mobile phones, charging power is up to 15W max, and compatible with earphones 5W and Apple watch 2.5W.

Multiview Drawing



Specifications

Mode: F6
Material: ABS+PC+PU Leather
Folded Dimension: 5.9" * 3.2" * 0.8"
Unfolded Dimension: 6.8" * 5.9" * 0.5"
Interface Type: Type-C
Working Temperature: -10℃—35℃
Input: 5V≐3A / 9V≐2.22A / 9V≐3A Max
Output: Wireless Charger for iPhone (15W)
Apple Watch Charger (2.5W)
Earphone Wireless Charger (5W)

Compatible With

- For iPhone:**
iPhone 15 / iPhone 15 Plus / iPhone 15 Pro / iPhone 15 Pro Max
iPhone 14 / iPhone 14 Plus / iPhone 14 Pro / iPhone 14 Pro Max
iPhone 13 / iPhone 13 Pro / iPhone 13 Pro Max / iPhone 13 mini
iPhone 12 / iPhone 12 Pro / iPhone 12 Pro Max / iPhone 12 mini
- For Earphone:**
AirPods 2nd and 3rd Generation
AirPods Pro 1-2 Series
Other Earphones with Wireless Charging Function
- For iWatch:**
Apple Watch Hermès/Nike/Ultra 2/
Ultra 9/8/7/6/5/4/3/2/SE

What You Get

3 IN 1 Wireless Charger
User Guide

Description of LED Indicator

- Indicator light working mode**
- When the wireless charger is connected to power for the first time, all indicators will light up for 3 seconds. Then the indicator light will go out.
 - The green light is on when the device is turned on and turns off after 5 seconds, indicating that the device is charging normally.
 - When the green light continues to flash, it means charging is abnormal: the device is not placed in the correct charging position or there is foreign matter on the surface of the mobile phone charging base. (except watch indicator)

Warm Reminders

- Make sure your devices support wireless charging before using.
- It is recommended to use the original charging cable and adapter.
- The suitable working temperature of this product is between -10℃—35℃. When it is in a high-temperature environment, the wireless charging efficiency will decrease.
- If the phone cannot be charged normally, please move your phone a little to find the best charging location for the phone and wireless charger.
- In the process of charging the mobile phone, the wireless charger may generate heat, which is normal.
- This product is not waterproof, please keep it away from all liquid materials.

Lifetime Warranty

We would like to serve you with any quality and service questions. Your satisfaction is always our eternal pursuit, and **we are on service 24/7 for you**, please feel free to contact us via Amazon.

Customer Service: HONORICHnoworry@163.com

About the FCC

This equipment complies with FCC radiation exposure limits set forth for an uncontrolled environment. This equipment should be installed and operated with a minimum distance of 20cm between the radiator & your body. This device complies with part 15 of the FCC rules, operation is subject to the following two conditions:
1. this device may not cause harmful interference.
2. this device must accept any interference received, including interference that may cause undesired operation.

FCC Warning

Any Changes or modifications not expressly approved by the party responsible for compliance could void the user's authority to operate the equipment.
Note: This equipment has been tested and found to comply with the limits for a Class B digital device, pursuant to part 15 of the FCC Rules. These limits are designed to provide reasonable protection against harmful interference in a residential installation. This equipment generates uses and can radiate radio frequency energy and, if not installed and used in accordance with the instructions may cause harmful interference to radio communications. However, there is no guarantee that interference will not occur in a particular installation. If this equipment does cause harmful interference to radio or television reception, which can be determined by turning the equipment off and on. The user is encouraged to try to correct the interference by one or more of the following measures:
1. Reorient or relocate the receiving antenna.
2. Increase the separation between the equipment and the receiver.
3. Connect the equipment to an outlet on a circuit different from that to which the receiver is connected.
4. Consult the dealer or an experienced radio/TV technician for help.