

# User Manual

## Wireless Adapter

-Original Car Wired To Wireless-

Please read the manual carefully before use.  
Recommend keeping this manual for future reference.

# Compatibility Note

- ☒ Please make sure your car supports wired Carplay or Android Auto functions.
- ☒ Required iPhone 6 or later iPhone models with IOS 10 or above for wireless Carplay function.
- ☒ Required an Android smartphone that support latest Android Auto function and with Android 11 or higher for wireless Android Auto function.

**How to confirm if your car has Apple wired CarPlay or Android Auto function.**

## **Method 1:**

Connect your iPhone or Android smartphone to your car by USB data cable and see connection interface logo on your car display.

## **Method 2:**

Check the compatible list below or check with your car manufacturer to see if your car has this capability.

Check out the website for supported car models



<https://www.apple.com/ios/carplay/available-models/>



<https://www.android.com/auto/>

# How to use

1. Start the car and wait for the car head unit system to be loaded.
2. Connect the Wireless Carplay & Android auto adapter to the USB-A or Type-C port in your car. Please be sure plug the adapter into the port that is for wired apple Carplay or android auto.
3. After the device is successfully linked to the vehicle, there will be a Bluetooth prompt screen, and the Bluetooth name will be prompted as: smartBox-xxxx.
4. Turn on the Bluetooth of your mobile phone, search and pair the Bluetooth 'smartBox-xxxx', and continue to agree to use it, then you can use the Carplay or android auto function normally.
5. Some models linked to Android Auto will not display the Bluetooth prompt interface. But it doesn't matter, you can directly search for Bluetooth smartBox-xxxx on your mobile phone, pair it and use Android auto normally.
6. Please note that you should keep your phone Bluetooth turned on, so that you can automatically link Carplay or android auto next time.

## 7. LED status indicator

☒ Power on:

CP Model: Red and green lights flicker.

AA Model: Red and blue lights flicker.

☒ Waiting for Bluetooth pairing:

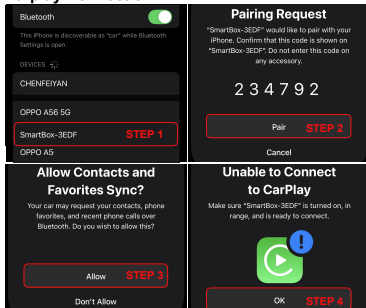
CP Model: Green light flashing.

AA Model: Blue light flashing.

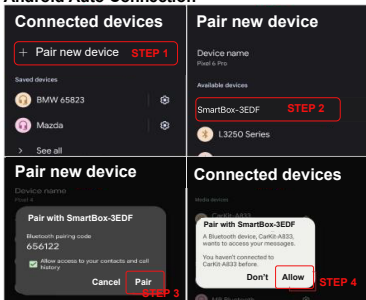
☒ Linked:

CP/AA Same: Colorful changes every 12 seconds.

## Carplay Connection



## Android Auto Connection



## **Please Note**

1. The wireless Carplay & Android Auto adapter working principle is: uses Bluetooth to establish a pairing between the iPhone or Android smartphone and the smartBox, then switches to using Wi-Fi to maintain the wireless connection.
2. Please ensure wireless Carplay & Android auto Adapter power indicates light is on.
3. Please ensure that your car models support wired Carplay or Android auto functions.

## **Switch Mobile phones:**

How to switch between different phones  
(Include switching Carplay and Android Auto Mode).

1. Turn off Bluetooth and Wi-Fi of the currently linked mobile phone at the same time.
2. Unplug and reinsert the adapter. (important)
3. Turn on the other phone's Bluetooth, search and pair the device's Bluetooth SmartBox-xxxx.
4. Try pairing several times to complete the handover if you are prompted that Bluetooth is occupied.

## **Press Key Functions:**

1. Press once: automatically switch between the last two connected phones.
2. Double-click: Restore factory settings (default is Carplay mode).
3. Press and hold for 3 seconds: erase the memory of Bluetooth connection.

## **OTA upgrade:**

1. Insert the CarPlay/Android Auto adapter into the USB communication port of the car.
2. Link the carplay/android auto box to the mobile phone and enter the carplay/android auto interface. (You can also plug the adapter into a 5V power supply and connect the adapter's Wi-Fi with your phone, password is 88888888)
3. Open the mobile web browser and enter the address "192.168.1.101".
4. Click "Online Upgrade" on the OTA page.
5. During the upgrade, do not exit the OTA page, so as not to interrupt the upgrade process.
6. When the upgrade progress reaches 70%, the adapter will automatically exit the carplay/android auto interface, when the upgrade is completed, the OTA page will prompt the upgrade to be completed.
7. After the upgrade is completed, re-plug the carplay/android auto box to display the upgraded version, at this time, you need to

delete the original Bluetooth link, and then re-establish a new Bluetooth link and use this product normally.

## FQA

1. What is the Wi-Fi password for the Wireless Carplay & Android Auto Adapter?

The Wi-Fi password is 88888888.

2. After pairing Android Auto adapter, can't start Android Auto function or compatible, can't recognize the USB.

1) If your car has use the android auto function for the first time, please use your data cable to connect your phone to activate android auto through a wired method.

2) Please make sure that android auto on your android phone is the last version. If not, please update to the latest version.

3) Please turn off the Bluetooth of your phone and enter the mobile application management to search auto to clear the auto cache. After the cleaning is completed, restart the adapter and reconnect to Bluetooth.

3. Audio input or output issues: calls rejected or forwarded to voicemail / no play sound / microphone not working /music playback interrupted or paused /voice functioning abnormally.

1) Please check if the iPhone or Android smartphone's Bluetooth connect to other devices such as Earphone, watch, etc. If so, please disconnect other auto-connected

Bluetooth devices, and android smartphone also need to connect to the vehicle Bluetooth for android auto.

2) When on a call, check that your 'Audio' output option is Carplay or Android Auto.

4. When use the wireless Carplay & Android Auto Adapter whether Mobile Phone can use other internet Wi-Fi?

Can't use other internet Wi-Fi at the same time.

5. Unable to automatically reconnect

1) Please make sure that the Bluetooth and Wi-Fi functions of your mobile phone are turned on and the Bluetooth is not occupied when you get in the car.

2) Clear the pairing record, restart the phone and repair the Adapter.

6. Can the adapter be paired with multiple phones?

The adapter can be paired with multiple phones, but only one device can be connected at a time.

Please note, the adapter's system will only auto-connect back to the last used phone.

7. Can't find the Bluetooth and Wi-Fi of the wireless Carplay & Android Auto Adapter?

Please make sure wireless Carplay & Android auto adapter power indicates light is on and be sure plug the adapter into the port that is for wired Carplay or Android auto.

If only one phone can't find the Bluetooth of the adapter, please try to reset the network and



Bluetooth settings of this phone, and then restart the phone and try again. If the same problem happens on the other phones, it may be defective, please let us know.

8. The indicator light of the adapter is still on after the car is turned off.

The car does not cut off all power immediately when the engine is turned off. The adapter's light will not go out immediately; it will turn off after a few minutes. Please rest assured that its power consumption is minimal and will not drain the car battery.

9. Whether Wireless Carplay & Android auto Adapter support YouTube Video?

It does not support YouTube or other videos.

## Packing List

1 × Wireless Adapter

1 × USB-A 3.0 To Type-C OTG Adapter

1 × User Manuel



**Switch cell phone button**

CE FCC RoHS  

Made in China

## **FCC WARNING**

This device complies with part 15 of the FCC Rules. Operation is subject to the following two conditions: (1) This device may not cause harmful interference, and (2) this device must accept any interference received, including interference that may cause undesired operation.

Note: This equipment has been tested and found to comply with the limits for a Class B digital device, pursuant to part 15 of the FCC Rules. These limits are designed to provide reasonable protection against harmful interference in a residential installation. This equipment generates, uses and can radiate radio frequency energy and, if not installed and used in accordance with the instructions, may cause harmful interference to radio communications. However, there is no guarantee that interference will not occur in a particular installation. If this equipment does cause harmful interference to radio or television reception, which can be determined by turning the equipment off and on, the user is encouraged to try to correct the interference by one or more of the following measures:

- Reorient or relocate the receiving antenna.
- Increase the separation between the equipment and receiver.
- Connect the equipment into an outlet on a circuit different from that to which the receiver is connected.
- Consult the dealer or an experienced radio/TV technician for help.

Note: The Grantee is not responsible for any changes or modifications not expressly approved by the party responsible for compliance. such modifications could void the user's authority to operate the equipment.

The device has been evaluated to meet general RF exposure requirement.

This equipment complies with FCC's RF radiation exposure limits set forth for an uncontrolled environment. This device and its antenna(s) must not be co-located or conjunction with any other antenna or transmitter.