

Wireless smart meat thermometer

KR100

1 Product Instructions



PROBE



Host/Signal Amplifier



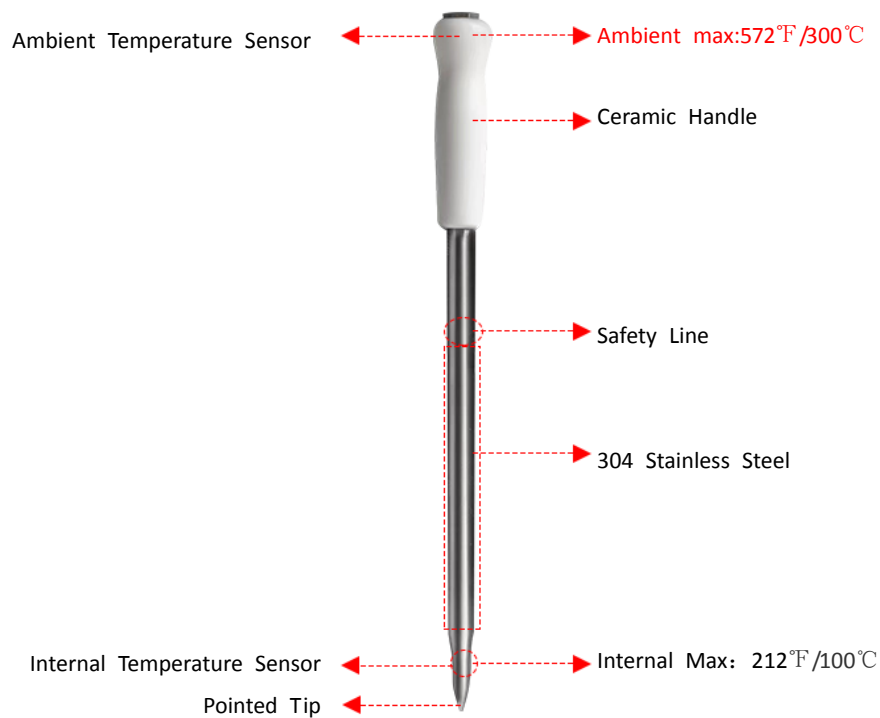
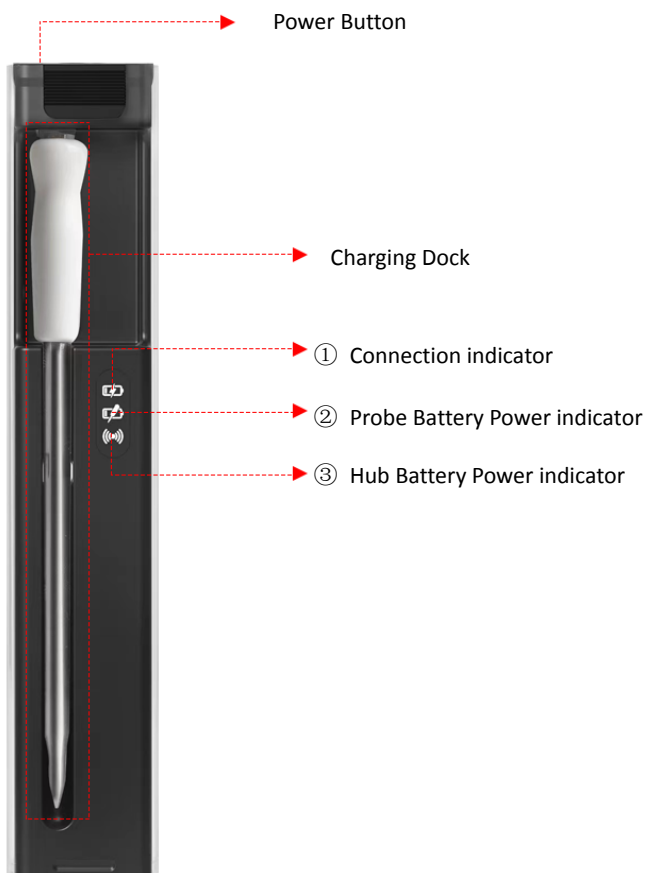
AIBBQ APP

Thank you for purchasing and using our wireless smart meat thermometer. Please read this manual carefully before using this product.

2 Product Specifications

Bluetooth Version 5.1	Internal temperature:-20~100℃/-4~212°F
APP name: AIBBQ / AILink、	Ambient temperature: 0-300℃/32~572°F
Wireless distance :Max 300 feet	Probe charging time:120 min
Probe standby time:24 hours	Host/Repeater Charging Time:2-3 hours
Host/Repeater standby time:120 hours	Waterproof: IP 67(probe)

3 Key setting



4 There are three LEDs on the charging dock:

4.1 The first: charging dock battery indicator (with a button), single color LED, red.

4.2 The second: probe connection indicator, two-color LEDs, blue/red.

4.3 The third: APP connection indicator, two-color LEDs, blue/red.

4.4 Charging dock battery indicator:

4.4.1 Uncharged state: press the button, the red LED will on for 2 seconds if the charging dock is charged or the red LED will flash for 2 seconds if the charging dock is low on power.(the button will not respond in charging state)

4.4.2 Charged state: the red LED will flash in charging and turn steady on in full charge.

4.5 Probe connection indicator: it will flash blue when probe and dock connected successfully and flash red when failure.

4.6 APP connection indicator: it will flash blue when APP and dock connected successfully and flash red when failure.

5 Connect to the app for use

Place the hub near (but never in or on) the cooking appliance. The hub works quickest and most efficiently if placed near the probe during cooking, especially if the probe is in a closed environment.



6 Download the APP

Search the keyword "AIBBQ" in App Store or Google play or scan the following QR code.

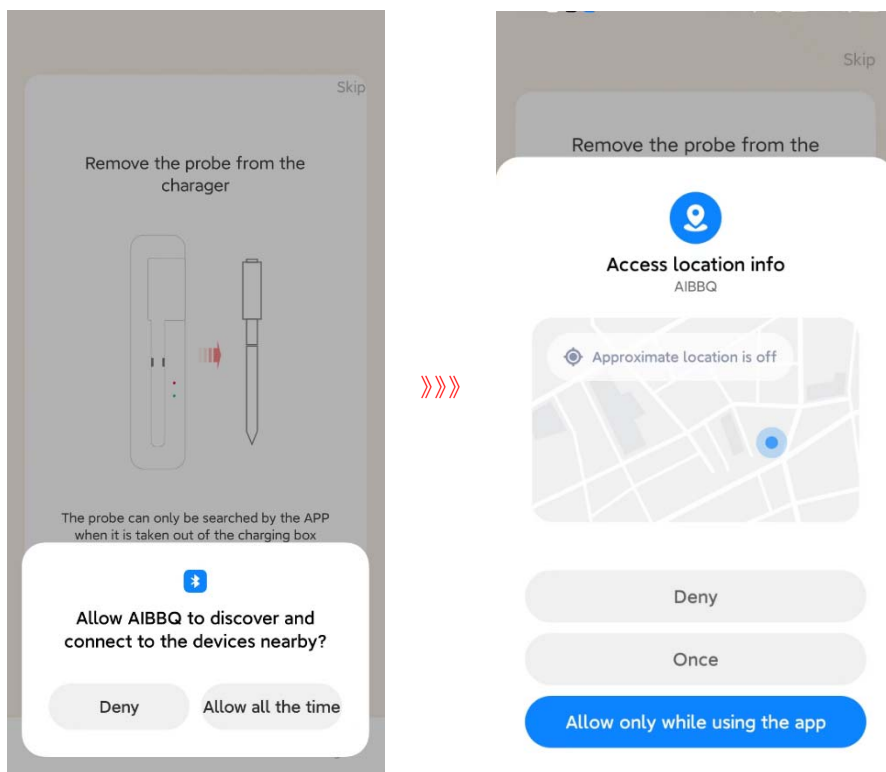
NOTE: The APP does not have a cloud server and will not collect personal information from users. Please rest assured to use it!



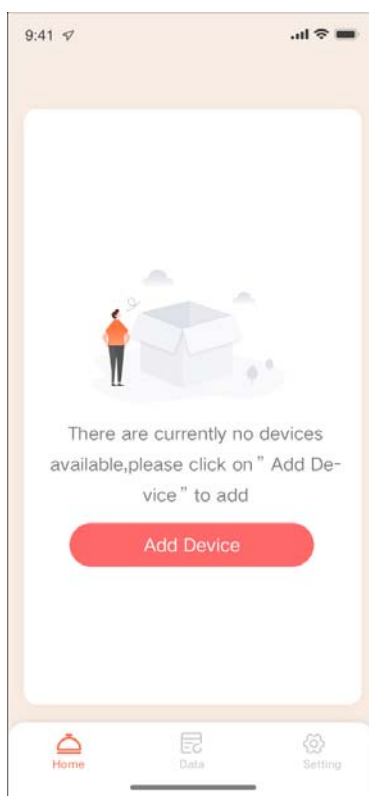
iOS 11.0 and above, Android 6.0 above.

7 Install applications and connect devices.

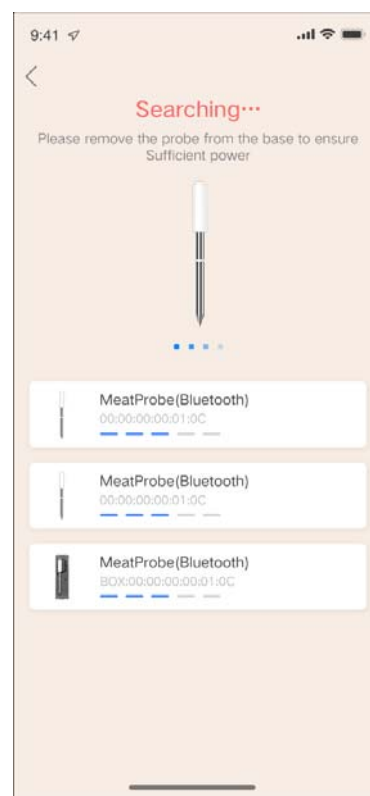
① Turn on Bluetooth on your phone (iOS system) The Android system must have both Bluetooth and location service enabled, as well as allow notification services. (Notification includes alarm sound and pop-up icon)



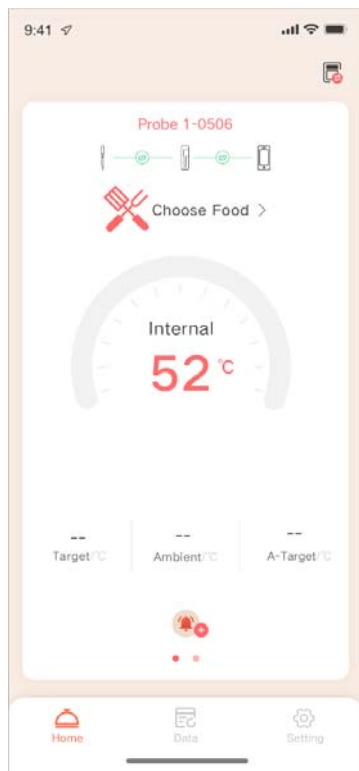
1、Turn on the device and open the APP (AIBBQ)



2、Open the APP and click "Add Device"

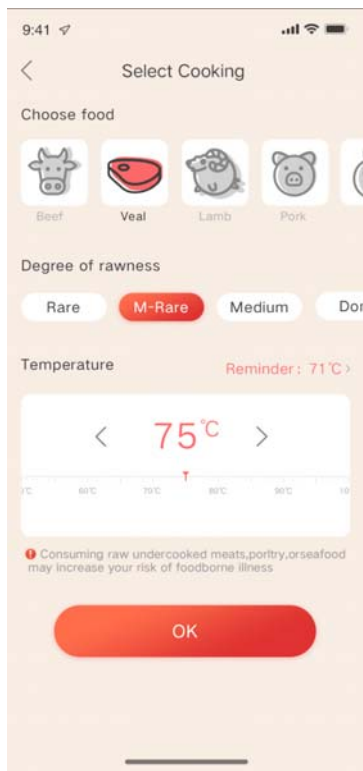


3、Find the device



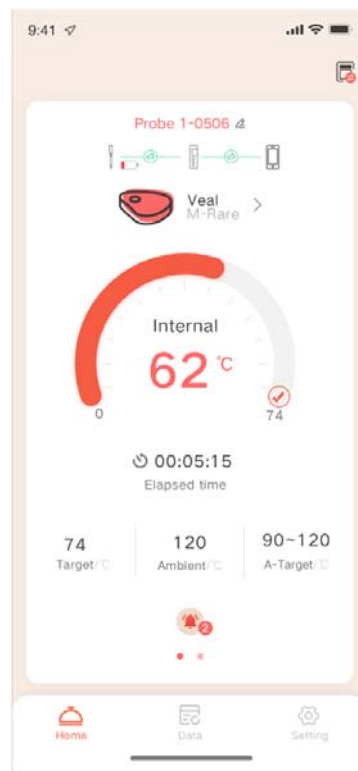
4、Successfully connected to Click
“Choose Food” Choose the food
cooked

»»»



5、Choose the food that needs to
be cooked

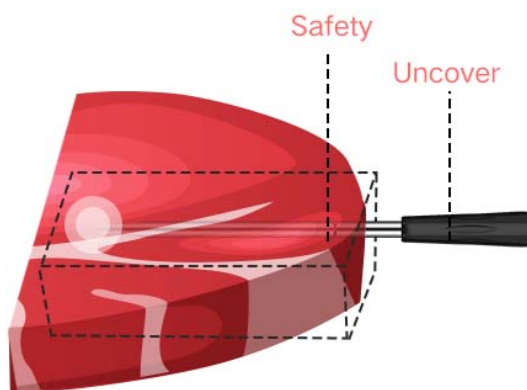
»»»



6、Start cooking, Food cooking
completion reminder
Click “A-Target” Set environmental

8 Attention!

In order to better communicate with mobile phones and allow wireless transmission distance to be farther, please keep the host with in **10** feet of the cooker. Due to the high surface temperature of cooking equipment, please do not place the host directly on the surface of cooking equipment or in a high-temperature environment. The ambient temperature for safe use of the host is: - 20 to +60 °C



The insertion method of the probe is related to the sensing temperature. The wrong insertion method will cause inaccurate temperature measurement or direct damage to the probe



One-third of the probe



Probe partially exposed



Direct to flames



9 Important security information

- Use the probe only for the intended purpose. The probe is designed for meat (food).
- To prevent the risk of electric shock, do not immerse the charging block in water or other liquid.
- To avoid damage to the probe, the probe must be inserted into the safety line in the meat.
- In order to maintain the best performance of the product, please do not insert any part of the probe's ceramic handle into the meat.
- Do not use the probe in a microwave oven or pressure cooker.
- Do not expose the wireless grill thermometer and probe directly to heat. Do not drop the probe on hard surface.
- The probe cannot be washed in a dishwasher. Wash the probe with soap and water before and after using by hand.
- When putting it back into the charger or the wireless grill thermometer make sure the probe is completely dry.
- The probe is waterproof, but it should not be immersed in water. Do not immerse in water for a long time.
- Please pay attention to the tip of the probe to avoid injury.
- During the cooking process or just after cooking, the probe will be very hot, please do not touch them with bare hands.

- Do not immerse the probe in cold water after cooking. Wait until the probes cool down by itself before washing
- The probe is not toy. Close supervision is required if you use the probe near children.
- Do not use this product outdoors in rain, thunderstorm or other severe weather conditions.
- Warning:
- This device complies with Part 15 of the FCC Rules. Operation is subject to the following two conditions: (1) this device may not cause harmful interference, and (2) this device must accept any interference received, including interference that may cause undesired operation.
- Changes or modifications not expressly approved by the party responsible for compliance could void the user's authority to operate the equipment.
- NOTE: This equipment has been tested and found to comply with the limits for a Class B digital device, pursuant to Part 15 of the FCC Rules. These limits are designed to provide reasonable protection against harmful interference in a residential installation. This equipment generates, uses and can radiate radio frequency energy and, if not installed and used in accordance with the instructions, may cause harmful interference to radio communications. However. There is no guarantee that interference will not occur in a particular installation.
- If this equipment does cause harmful interference to radio or television reception which can be determined by turning the equipment off and on, the user is encouraged to try to correct the interference by one or more of the following measures:
 - --Reorient or relocate the receiving antenna.
 - -- Increase the separation between the equipment and receiver
 - --Connect the equipment into an outlet on a circuit different from that to which the receiver is connected.
 - --Consult the dealer or an experienced radio/TV technician for help
- NOTE: This device and its antenna(s) must not be co-located or operation in conjunction with any other antenna or transmitter
- The device has been evaluated to meet general RF exposure requirement. The device can be used in portable exposure condition without restriction.