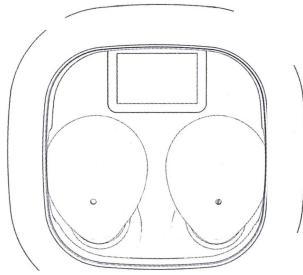


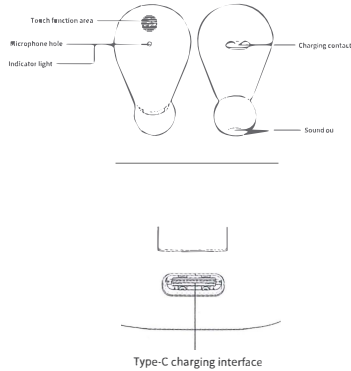
manual

Product model : SK19



SK19

Functional operation diagram

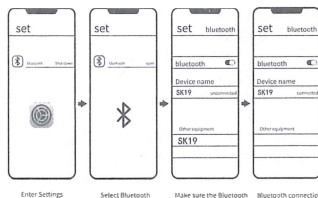


Headset function operation instructions

1. Power on: long press the function key for 3 seconds
2. Shutdown: long press the function key for 6 seconds
3. Answer / end: click the function key
4. Reject incoming call: long press the multifunction key for 1.5 seconds
5. Pause / play: double click the function key
6. Previous song: three hit function key (L)
7. Next song: three hit function key (R)
8. Volume +: press and hold the function key for 1.5 seconds (L) plus one bar of volume
9. Volume -: long press the function key for 1.5 seconds (R) to reduce the volume by one grid
10. Game mode: four click function key (R) to switch game mode / music mode
11. Voice assistant: four click function key (L) to activate Siri
12. Restore factory settings: five click the function key (clear pairing record) to operate when the phone is not connected

Headset connection pairing operation

When the headset charging compartment is taken out, it will start automatically, and the red and blue lights will flash alternately to start the device search. As shown in the following figure:



Charging state indication

1. 100% of the charging chamber's power display 100% indicates low power display and charging is required
2. When charging the charging box, the display screen displays 100% specific power, and when fully charged, it displays 100%
3. When the charging chamber charges the headset, Headphone light red, bin blue light shining
4. When the headset is low, the prompt (Beep) indicates low power prompt

Functional use	Communication Bluetooth headset, music Bluetooth headset, broadcast call
Frequency Response	20HZ- 20KHZ
impedance	32Ω±15%
Sensitivity	103 ± 3dB At 1000Hz At 1.2V
Bluetooth receiving distance	≥ 10m (under standard environment)
Bluetooth version	Bluetooth 5.3
Transmission range	2400- 2483.5MHz
Support agreement	HSP/HFP/ADP/SBC/ ACC/ AVRCP
Transmission frequency	2.4GHz- 2.4835GHz SMCBand
Headset charging time	30 minutes (headphones), about 1 hour (charging case)
Playback time	5 hours (60% volume)
Talk time	4-5 hours (60% volume)
Endurance time	Talk duration when Bluetooth headset and mobile phone are connected: About 4-5 hours (binaural call), length of call in connected state, it can run the earphones three times
Charging voltage / current	-10-50V, C Rated input of earphone: dc5v-25mA
Product working temperature	-20-55°C Rated input of charging chamber: dc5v-100mA
Product storage temperature	-20-55°C

Product safety information

Please read all instructions and warnings before using this product. Improper use will damage the product or personal safety. Do not store this product at high temperature.

1. The product contains batteries. Do not expose the product to strong sunlight or overheated environments such as heaters.
2. The product cannot be placed near the fire source and other harsh environments. It is forbidden to knock, throw, trample, squeeze or throw into the fire. If there is swelling, do not use it.
3. Ambient temperature of the product: 0-45 °C.
4. Do not use the product inappropriately in violation of the product instructions, causing damage to the product or endangering the safety of personal and property, and bear the consequences.
5. Non professional personnel are strictly forbidden to disassemble this product, otherwise it may cause fire, or even completely damage this product.
6. Do not use loads (electrical appliances) that exceed the output current of this product. If the load is exceeded, it will automatically stop working.
7. Please use clean cotton cloth to clean the headphone charging contact regularly, to avoid the situation that the headset cannot be charged or turned on due to long-term use.
8. Do not put this product in water (or washing machine). If the product has water ingress, please wait for it to dry naturally before using it.

FCC WARNING

This device complies with part 15 of the FCC Rules. Operation is subject to the following two conditions: (1) This device may not cause harmful interference, and (2) this device must accept any interference received, including interference that may cause undesired operation. Note: This equipment has been tested and found to comply with the limits for a Class B digital device, pursuant to part 15 of the FCC Rules. These limits are designed to provide reasonable protection against harmful interference in a residential installation. This equipment generates, uses and can radiate radio frequency energy and, if not installed and used in accordance with the instructions, may cause harmful interference to radio communications. However, there is no guarantee that interference will not occur in a particular installation. If this equipment does cause harmful interference to radio or television reception, which can be determined by turning the equipment off and on, the user is encouraged to try to correct the interference by one or more of the following measures:
—Reorient or relocate the receiving antenna.
—Increase the separation between the equipment and receiver.
—Connect the equipment into an outlet on a circuit different from that to which the receiver is connected.
—Consult the dealer or an experienced radio/TV technician for help.
Note: The Grantee is not responsible for any changes or modifications not expressly approved by the party responsible for compliance. Such modifications could void the user's authority to operate the equipment.
The device has been evaluated to meet general RF exposure requirement.
This equipment complies with FCC's RF radiation exposure limits set forth for an uncontrolled environment. This device and its antenna(s) must not be co-located or in conjunction with any other antenna or transmitter.
FCC ID: 2BDDI-SK19