

# Thermal Label Printer

# USER GUIDE



## Driver Installation Guide

Compatible with  Windows  macOS

---

Please read the guide before use !

---

## Printer and computer connection

### 1. Connect USB Cable

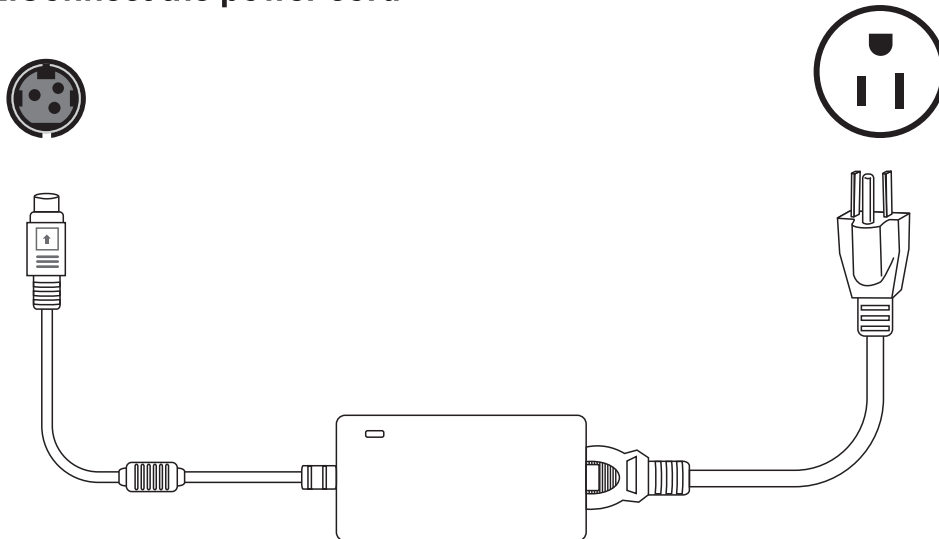


① Plug USB cable into the printer

② Plug USB cable into the computer

\* Please connect the USB port on the backside of the case if you are using desktop computer.

### 2. Connect the power cord



① Plug power cord into the printer

② Plug power cord into the socket

## Driver installation guide

We provide driver installation programs for the following computer systems



Driver ( for Win7 Win8 Win10 WinXP )



Driver for macOS

---

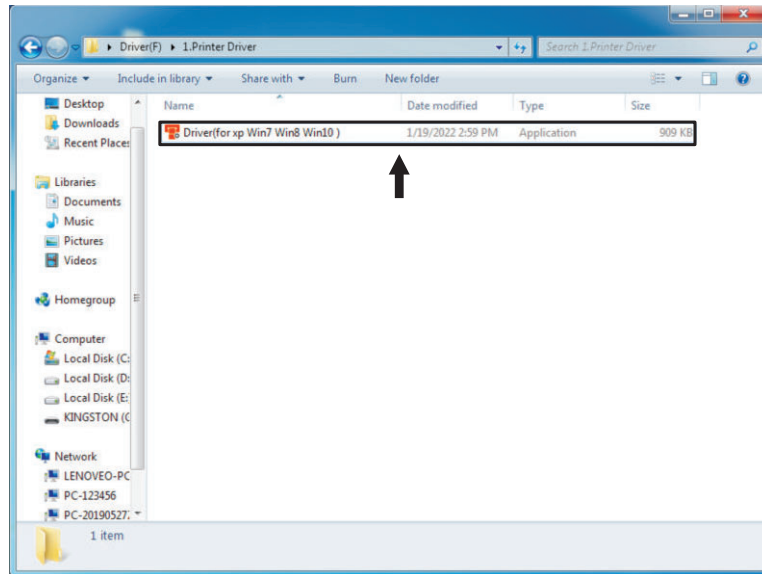
**Before install the driver, please make sure that you have finished the following steps.**

1. Your printer has been connected to your computer with USB cable.
2. Your printer has been connected to the power socket and turned on.
3. You have known what operation system of your computer.
4. Download the printer driver from our official website and install it by yourself or you can contact us for the technical support online.

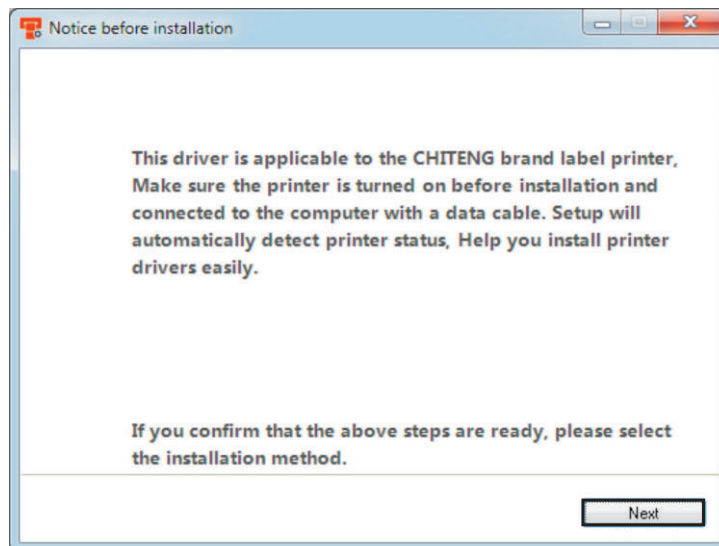
**Now we will show you how to install the driver step by step in Windows PC and Mac.**

## Driver Installation Guide for Windows ( Taking M4201 as an example )

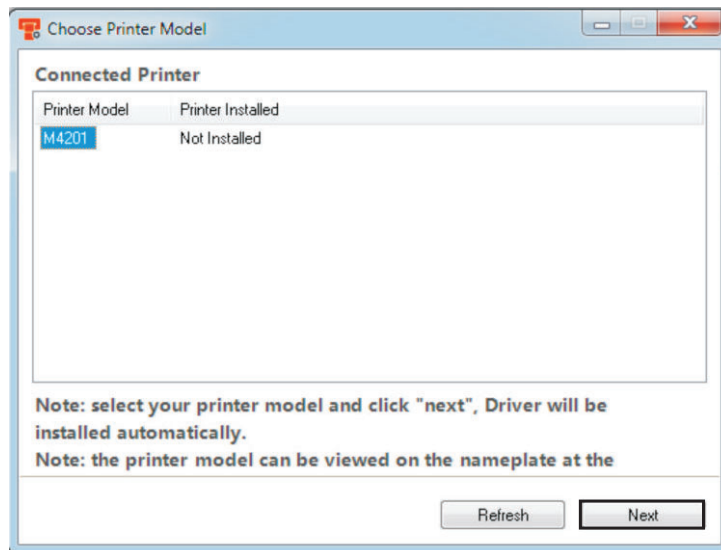
### 1. Double Click “Driver”



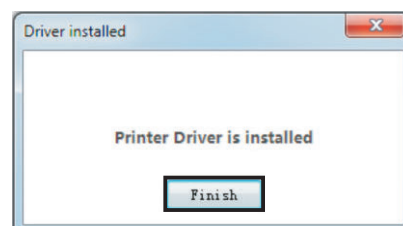
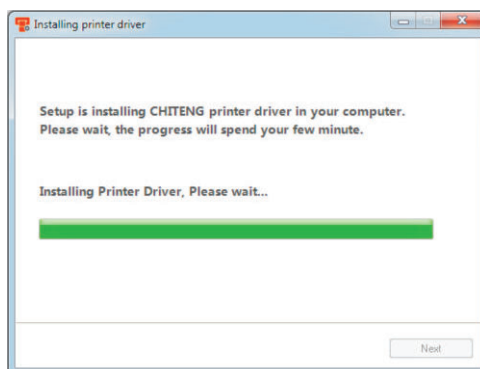
### 2. Click “Next”



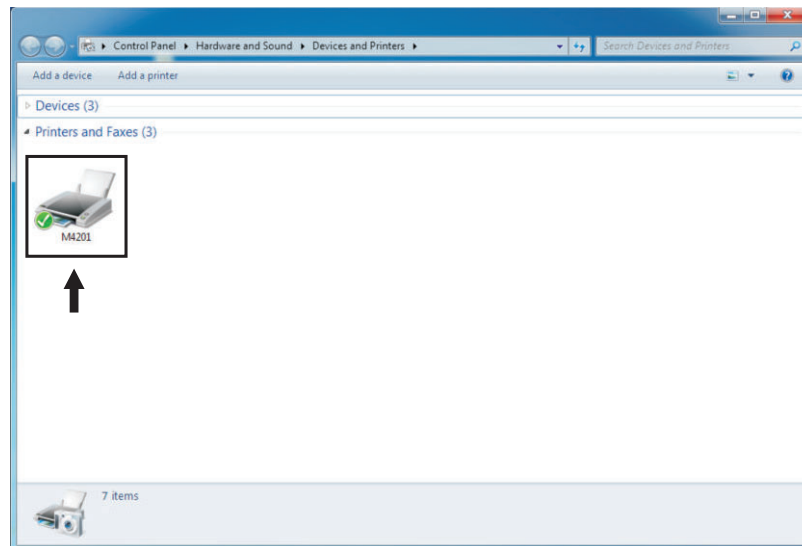
3. Click “Next”



4. Click “Finish”



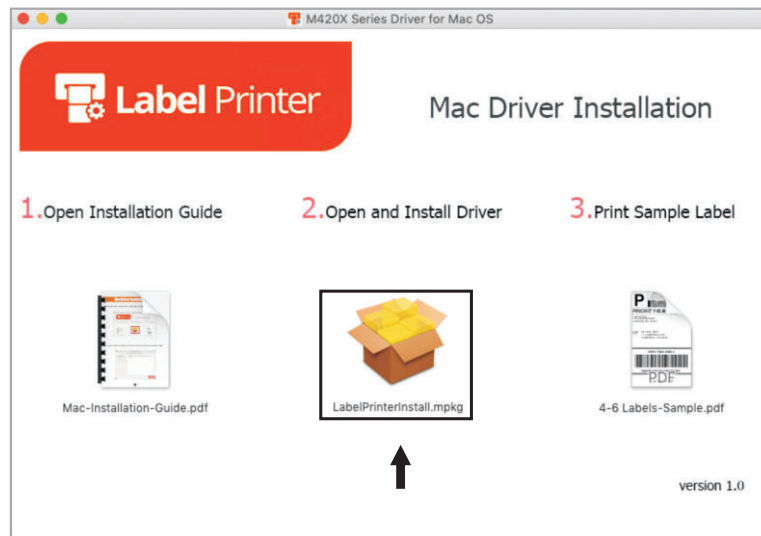
5. Click [ Control Panel ] -> [ Devices and Printers ]



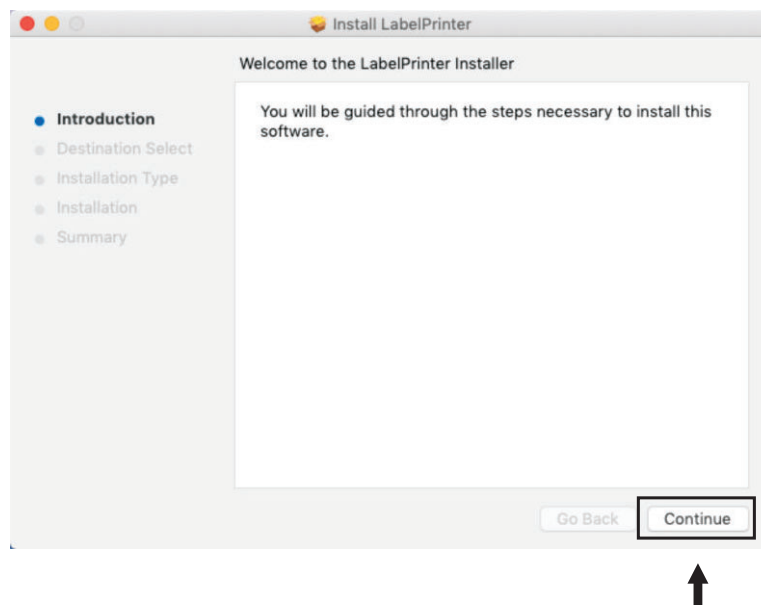
## Driver Installation Guide for Mac

( Taking M4201 as an example )

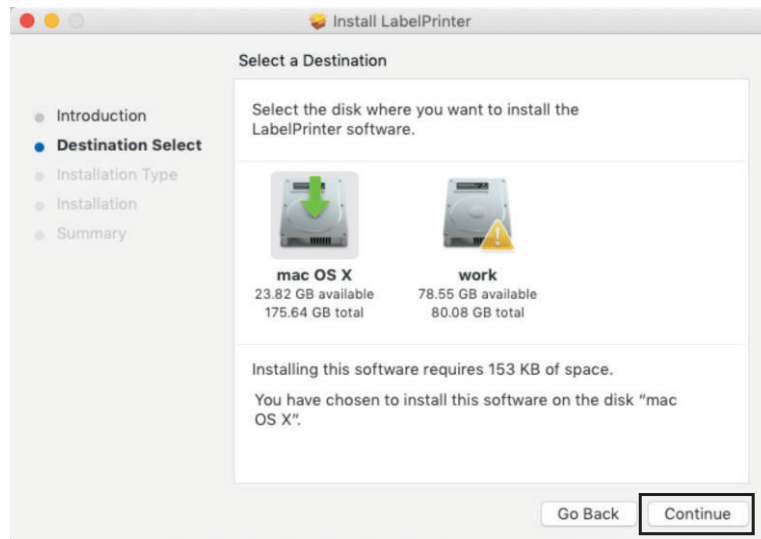
1. Please double click on the installer pkg to begin the installation.



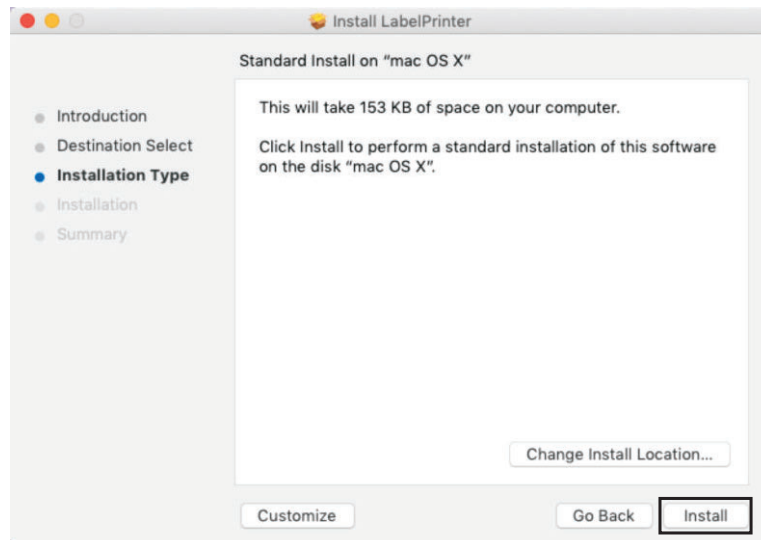
2. Click on **【Continue】** and proceed with the remaining installation steps.



### 3. Click on 【Continue】

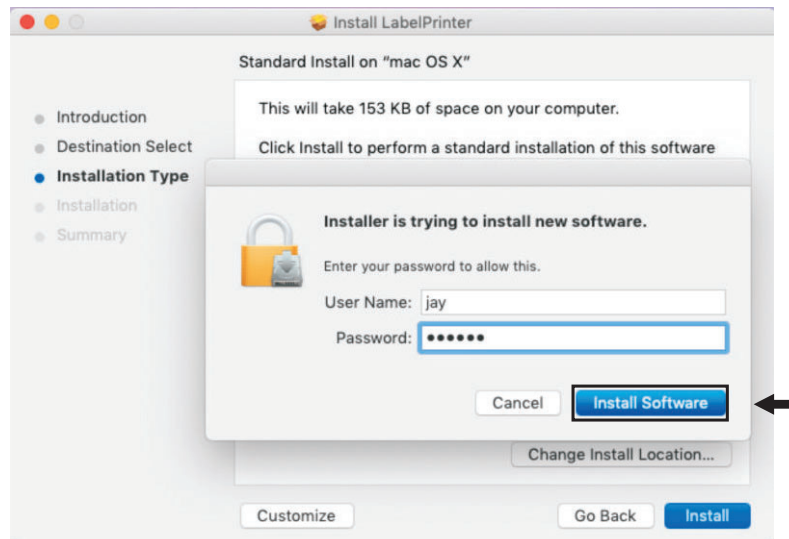


### 4. Click on 【Install】

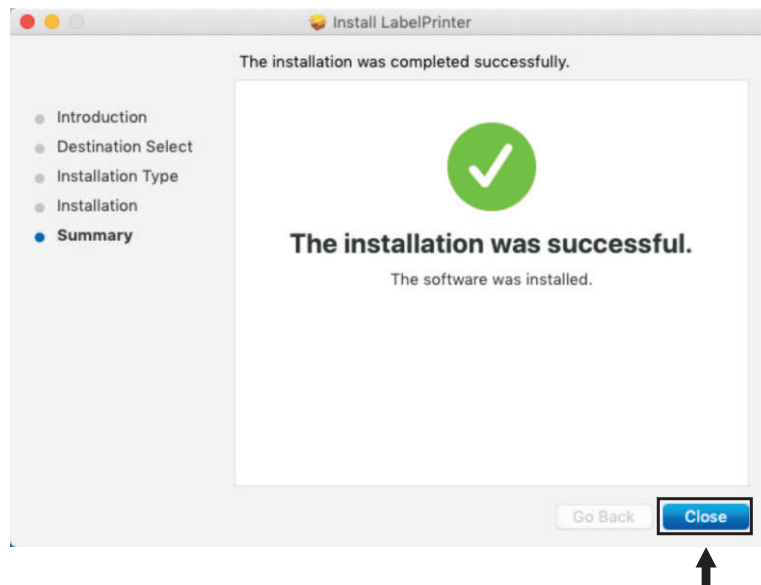




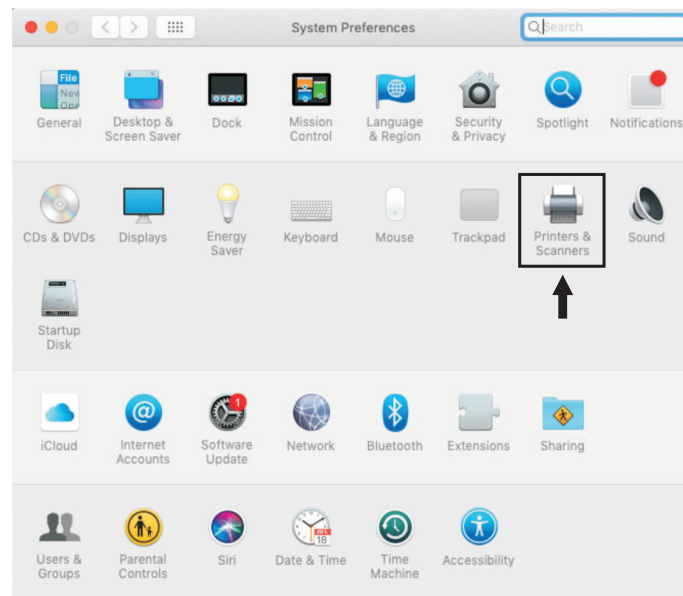
5. Click on **【Install Software】**



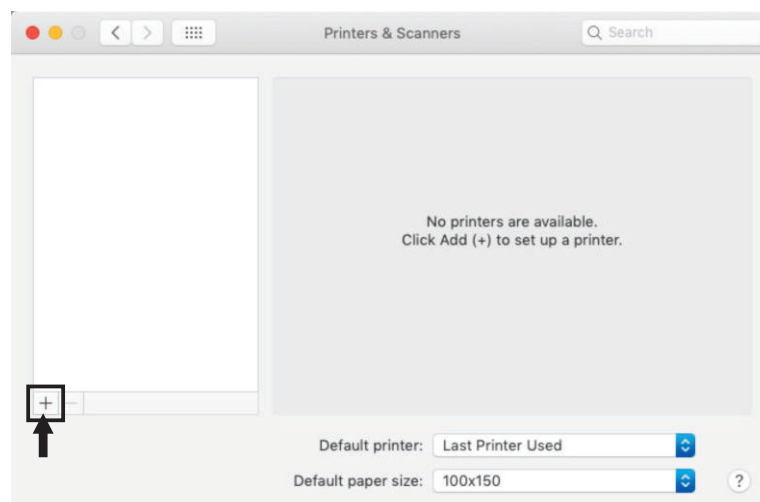
6. Click on **【Close】**



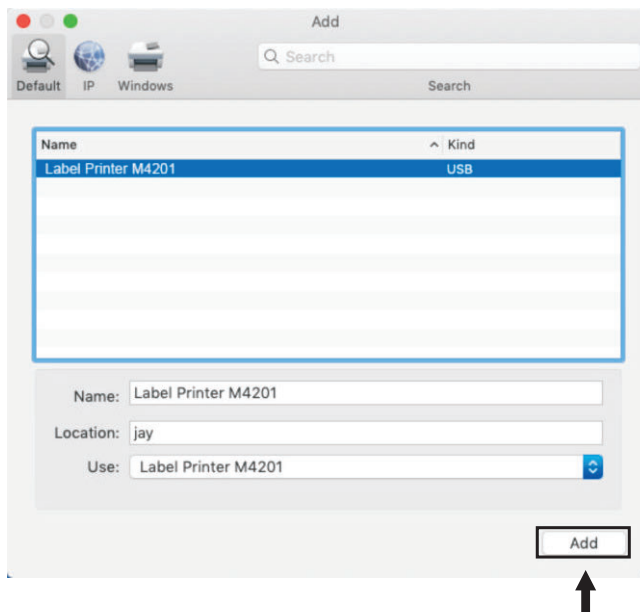
7. Click on **System Preferences** and click on **Printers & Scanners** .



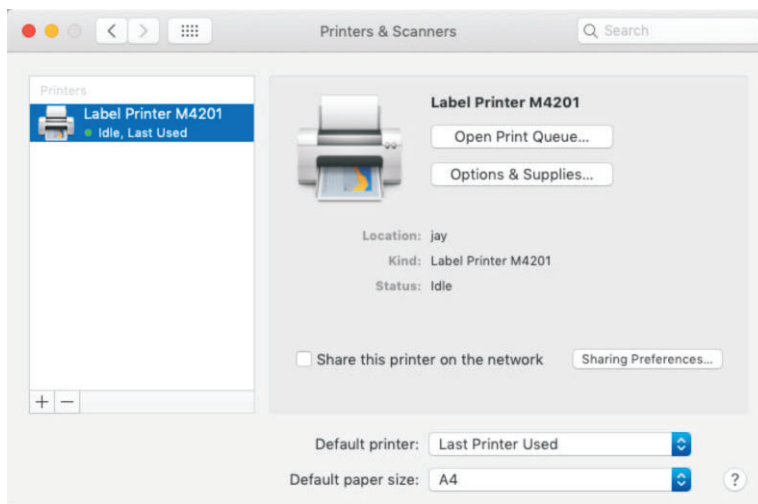
8. Click on **+** and click on **Add Printers or Scanners** .



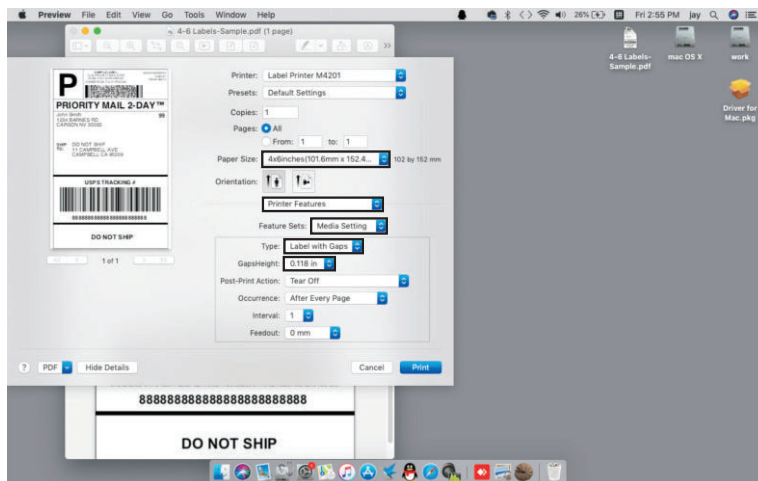
9. Click on **Label Printer M4201** and Click on **Add** .



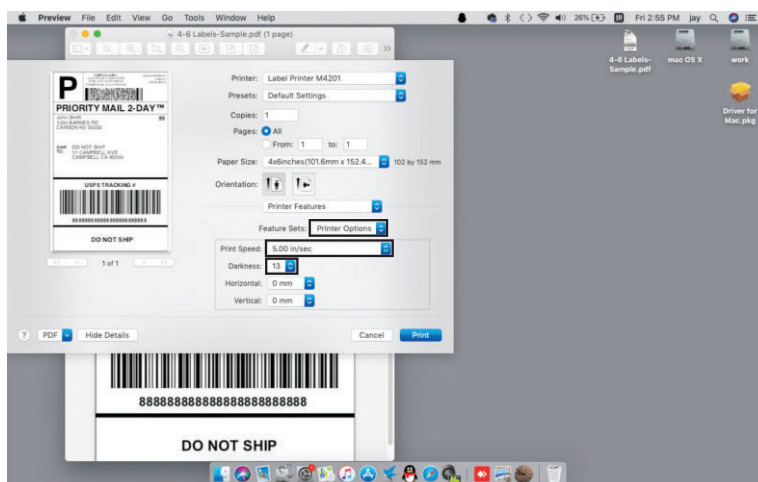
10. After adding, the printer driver model will appear in the list of **printer & scanner** with a green light on.



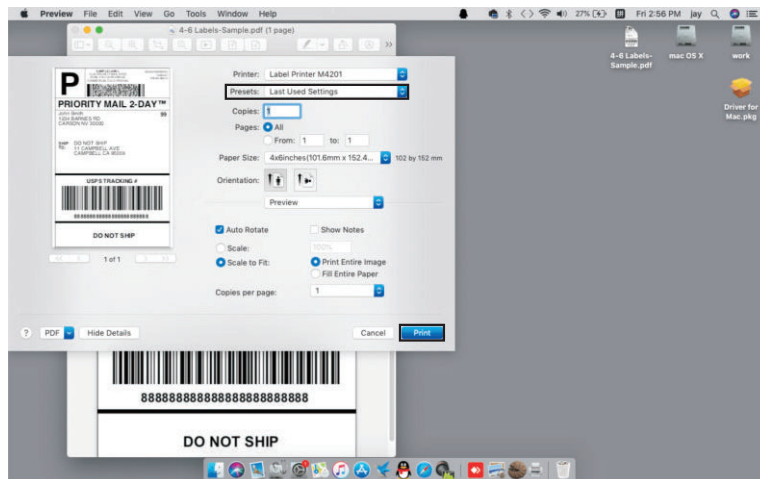
11. In the print dialogue, please be sure to select your "Paper Size" appropriately (for example 4x6). .,Select **Printer Features** , then **Feature Sets** ,select **Media Setting** in the drop down menu. **Type** be **Label with Gaps** – **GapsHeight** be **[0.118 in]** .



12. Then select **Printer Options** in the drop down menu. You can set the **Print Speed** to be **5inch/sec** – **Darkness** be **13** .Click **Print** .

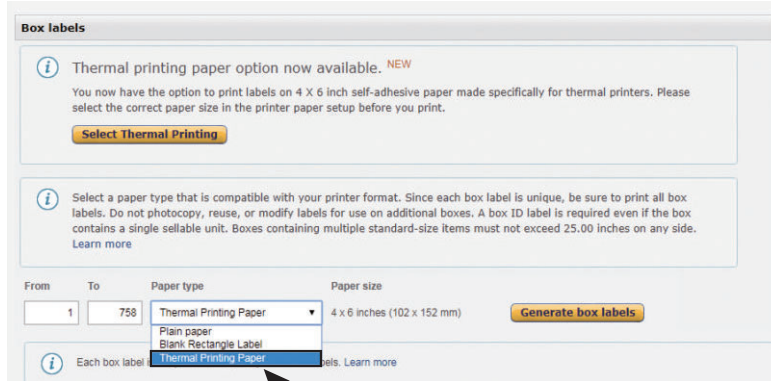


13. Wanna print again, select the **【Last Used Settings】** at the **【Presets】** menu. click **【Print】** .



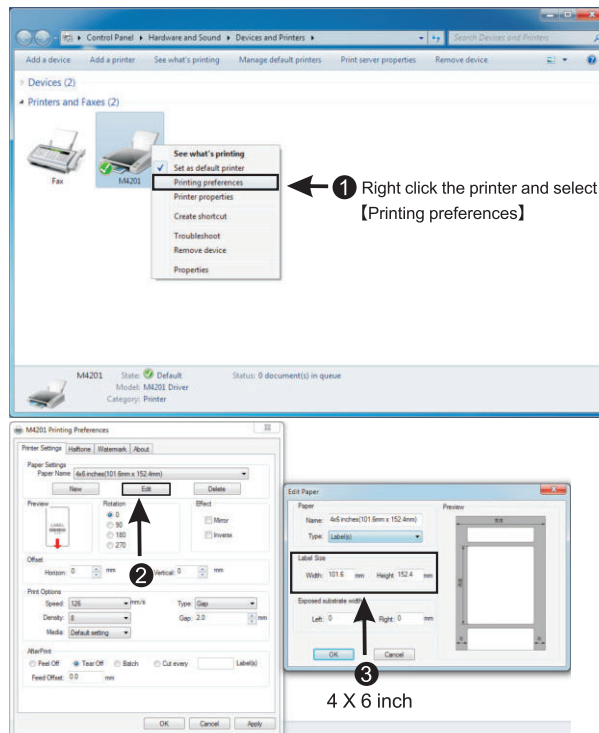
## How to print from Etsy, PayPal, Ebay, or Amazon etc, ( Taking M4201 as an example )

- ① Make sure that your print setting in “your store” are set to 4x6 or thermal printing at the first place. Following is on Amazon store, FBA label print setting. Etsy, ,,Ebay and PayPal are likewise.



【Thermal Printing Paper】

- ② You now have the option to print labels on 4 X 6 inch self-adhesive paper made specifically for thermal printers. Please select the correct paper size in the printer paper setup before you print.



## How to print the labels in PDF file from Windows computer

( Taking M4201 as an example )

### Cropping a full size 8.5" x 11" page to a 4" x 6" label

Some shipping platforms only provide you with a full page (8.5" x 11") document.

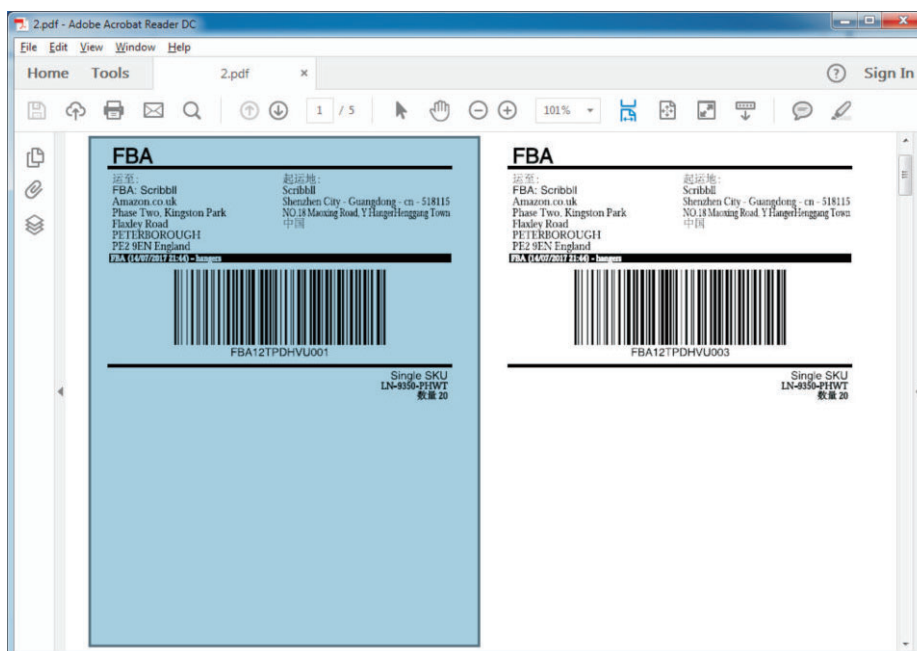
While there are many ways to split this page into a 4" x 6" label size, here is our favorite method:

1. First, you need to download the Adobe reader to your computer. Click this link to get it.

<https://get.adobe.com/cn/reader/>

2. Go to the [ **Control Panel** ]->[ **Devices and Printers** ]-> right click on [ **M4201** ] driver-> click [ **Printing Preferences** ] to set the paper size, print speed and darkness.  
Here we take 4 X 6 inch setting as an example.

3. Open the PDF file in Adobe Reader -> Go to [ **Edit** ]-> click [ **Take a Snapshot** ] -> Click and drag the box over your label -> Click [ **File** ] -> [ **Print** ] to open the print window -> ensure preview looks good and click [ **Print** ].



Version: Y-1.2  
Date: 2022.05.28

# Thermal Label Printer USER GUIDE



---

\* Specifications, accessories, parts and programs are subject to the change without notice.



#### FCC WARNING

This device complies with part 15 of the FCC Rules. Operation is subject to the following two conditions: (1) this device may not cause harmful interference, and (2) this device must accept any interference received, including interference that may cause undesired operation. Any changes or modifications not expressly approved by the party responsible for compliance could void the user's authority to operate the equipment.

NOTE: This equipment has been tested and found to comply with the limits for a Class B digital device, pursuant to Part 15 of the FCC Rules. These limits are designed to provide reasonable protection against harmful interference in a residential installation. This equipment generates, uses and can radiate radio frequency energy and, if not installed and used in accordance with the instructions, may cause harmful interference to radio communications.

However, there is no guarantee that interference will not occur in a particular installation. If this equipment does cause harmful interference to radio or television reception, which can be determined by turning the equipment off and on, the user is encouraged to try to correct the interference by one or more of the following measures:

- Reorient or relocate the receiving antenna.
- Increase the separation between the equipment and receiver.
- Connect the equipment into an outlet on a circuit different from that to which the receiver is connected.
- Consult the dealer or an experienced radio/TV technician for help.

To maintain compliance with FCC's RF Exposure guidelines, This equipment should be installed and operated with minimum 20cm distance between the radiator and your body: Use only the supplied antenna.