

Measurement Report for Device, P01 GSM850_Rear Face_1cm_Ch190

Device under Test Properties

Model, Manufacturer	Dimensions [mm]	IMEI	DUT Type
Device,	135.0 x 75.0 x 14.0		4G LTE Mobile Wifi

Exposure Conditions

Phantom Section, TSL	Position, Test Distance [mm]	Band	Group, UID	Frequency [MHz], Channel Number	Conversion Factor	TSL Conductivity [S/m]	TSL Permittivity
Flat, HSL600-10000MHz	BACK, 10.00	GSM 850	GSM, 10027-DAC	836.600, 190	9.62	0.943	43.2

Hardware Setup

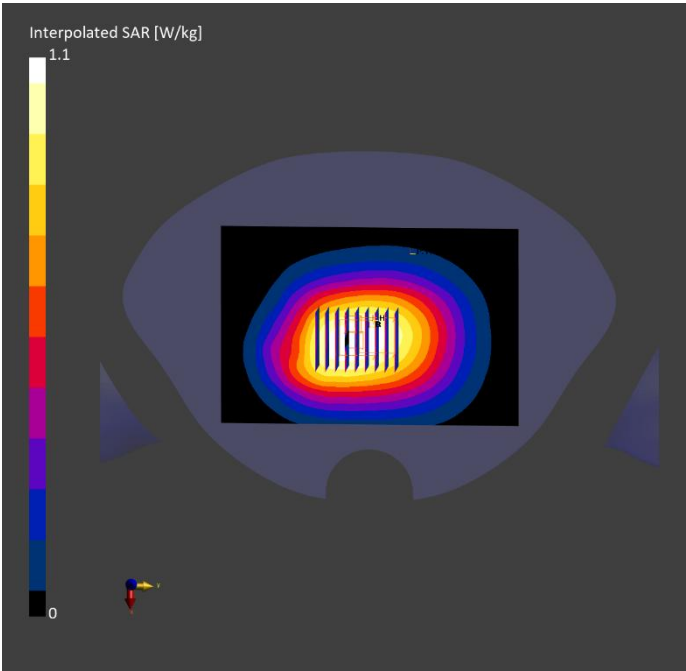
Phantom	TSL, Measured Date	Probe, Calibration Date	DAE, Calibration Date
Twin-SAM V8.0 (30deg probe tilt) - 2097	HSL600-10000MHz, 2024-Apr-08	EX3DV4 - SN7738, 2023-12-13	DAE4 Sn1725, 2023-10-26

Scan Setup

	Area Scan	Zoom Scan
Grid Extents [mm]	120.0 x 180.0	30.0 x 30.0 x 30.0
Grid Steps [mm]	15.0 x 15.0	6.0 x 6.0 x 1.5
Sensor Surface [mm]	3.0	1.4
Graded Grid	N/A	Yes
Grading Ratio	N/A	1.5
MAIA	N/A	N/A
Surface Detection	VMS + 6p	VMS + 6p
Scan Method	Measured	Measured

Measurement Results

	Area Scan	Zoom Scan
Date	2024-04-08	2024-04-08
psSAR1g [W/kg]	0.598	0.629
psSAR10g [W/kg]	0.420	0.448
Power Drift [dB]	-0.02	-0.10
Power Scaling	Disabled	Disabled
Scaling Factor [dB]		
TSL Correction	No correction	No correction
M2/M1 [%]		85.8
Dist 3dB Peak [mm]		3.8



Measurement Report for Device, P02 PCS 1900_Rear Face_1cm_Ch512

Device under Test Properties

Model, Manufacturer	Dimensions [mm]	IMEI	DUT Type
Device,	135.0 x 75.0 x 14.0		4G LTE Mobile Wifi

Exposure Conditions

Phantom Section, TSL	Position, Test Distance [mm]	Band	Group, UID	Frequency [MHz], Channel Number	Conversion Factor	TSL Conductivity [S/m]	TSL Permittivity
Flat, HSL600-10000MHz	BACK, 10.00	PCS 1900	GSM, 10090-DAC	1850.200, 512	8.0	1.42	40.0

Hardware Setup

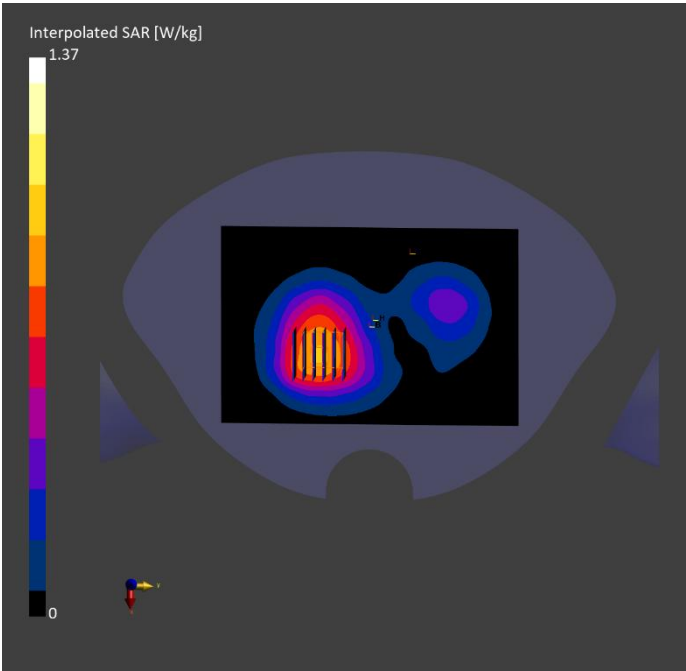
Phantom	TSL, Measured Date	Probe, Calibration Date	DAE, Calibration Date
Twin-SAM V8.0 (30deg probe tilt) - 2097	HSL600-10000MHz, 2024-Apr-10	EX3DV4 - SN7738, 2023-12-13	DAE4 Sn1725, 2023-10-26

Scan Setup

	Area Scan	Zoom Scan
Grid Extents [mm]	120.0 x 180.0	30.0 x 30.0 x 30.0
Grid Steps [mm]	15.0 x 15.0	6.0 x 6.0 x 1.5
Sensor Surface [mm]	3.0	1.4
Graded Grid	N/A	Yes
Grading Ratio	N/A	1.5
MAIA	N/A	N/A
Surface Detection	VMS + 6p	VMS + 6p
Scan Method	Measured	Measured

Measurement Results

	Area Scan	Zoom Scan
Date	2024-04-10	2024-04-10
psSAR1g [W/kg]	0.787	0.824
psSAR10g [W/kg]	0.492	0.518
Power Drift [dB]	0.06	-0.05
Power Scaling	Disabled	Disabled
Scaling Factor [dB]		
TSL Correction	No correction	No correction
M2/M1 [%]		84.2
Dist 3dB Peak [mm]		> 15.0



Measurement Report for Device, P03 WCDMA II_RMC12.2K_Rear Face_1cm_Ch9400

Device under Test Properties

Model, Manufacturer	Dimensions [mm]	IMEI	DUT Type
Device,	135.0 x 75.0 x 14.0		4G LTE Mobile Wifi

Exposure Conditions

Phantom Section, TSL	Position, Test Distance [mm]	Band	Group, UID	Frequency [MHz], Channel Number	Conversion Factor	TSL Conductivity [S/m]	TSL Permittivity
Flat, HSL600-10000MHz	BACK, 10.00	Band 2	WCDMA, 10011-CAC	1880.000, 9400	8.0	1.44	39.9

Hardware Setup

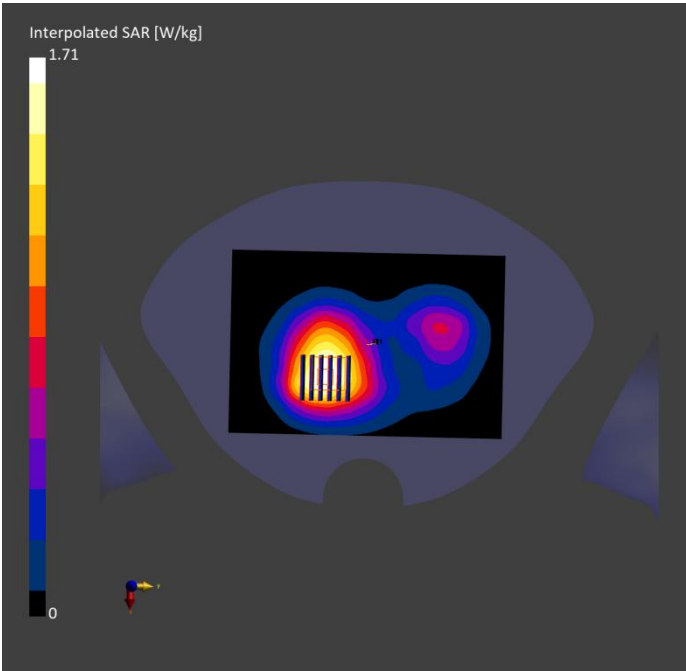
Phantom	TSL, Measured Date	Probe, Calibration Date	DAE, Calibration Date
Twin-SAM V8.0 (30deg probe tilt) - 2097	HSL600-10000MHz, 2024-Apr-10	EX3DV4 - SN7738, 2023-12-13	DAE4 Sn1725, 2023-10-26

Scan Setup

	Area Scan	Zoom Scan
Grid Extents [mm]	120.0 x 180.0	30.0 x 30.0 x 30.0
Grid Steps [mm]	15.0 x 15.0	6.0 x 6.0 x 1.5
Sensor Surface [mm]	3.0	1.4
Graded Grid	N/A	Yes
Grading Ratio	N/A	1.5
MAIA	N/A	N/A
Surface Detection	VMS + 6p	VMS + 6p
Scan Method	Measured	Measured

Measurement Results

	Area Scan	Zoom Scan
Date	2024-04-10	2024-04-10
psSAR1g [W/kg]	1.02	1.04
psSAR10g [W/kg]	0.625	0.654
Power Drift [dB]	-0.01	-0.01
Power Scaling	Disabled	Disabled
Scaling Factor [dB]		
TSL Correction	No correction	No correction
M2/M1 [%]		83.5
Dist 3dB Peak [mm]		> 15.0



Measurement Report for Device, P04 WCDMA IV_RMC12.2K_Rear Face_1cm_Ch1312

Device under Test Properties

Model, Manufacturer	Dimensions [mm]	IMEI	DUT Type
Device,	135.0 x 75.0 x 14.0		4G LTE Mobile Wifi

Exposure Conditions

Phantom Section, TSL	Position, Test Distance [mm]	Band	Group, UID	Frequency [MHz], Channel Number	Conversion Factor	TSL Conductivity [S/m]	TSL Permittivity
Flat, HSL600-10000MHz	BACK, 10.00	Band 4	WCDMA, 10011-CAC	1712.400, 1312	8.35	1.35	40.2

Hardware Setup

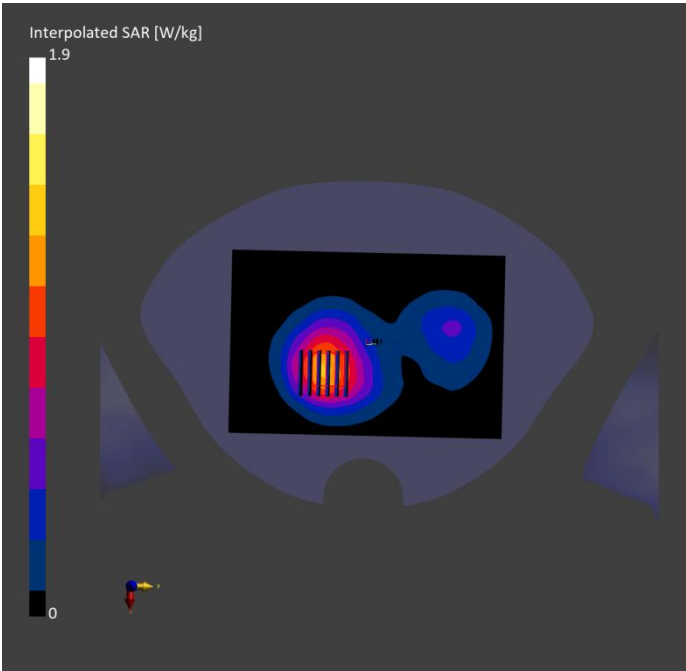
Phantom	TSL, Measured Date	Probe, Calibration Date	DAE, Calibration Date
Twin-SAM V8.0 (30deg probe tilt) - 2097	HSL600-10000MHz, 2024-Apr-11	EX3DV4 - SN7738, 2023-12-13	DAE4 Sn1725, 2023-10-26

Scan Setup

	Area Scan	Zoom Scan
Grid Extents [mm]	120.0 x 180.0	30.0 x 30.0 x 30.0
Grid Steps [mm]	15.0 x 15.0	6.0 x 6.0 x 1.5
Sensor Surface [mm]	3.0	1.4
Graded Grid	N/A	Yes
Grading Ratio	N/A	1.5
MAIA	N/A	N/A
Surface Detection	VMS + 6p	VMS + 6p
Scan Method	Measured	Measured

Measurement Results

	Area Scan	Zoom Scan
Date	2024-04-11	2024-04-11
psSAR1g [W/kg]	1.10	1.15
psSAR10g [W/kg]	0.674	0.712
Power Drift [dB]	0.07	-0.09
Power Scaling	Disabled	Disabled
Scaling Factor [dB]		
TSL Correction	No correction	No correction
M2/M1 [%]		84.3
Dist 3dB Peak [mm]		17.1



Measurement Report for Device, P05 WCDMA V_RMC12.2K_Rear Face_1cm_Ch4132

Device under Test Properties

Model, Manufacturer	Dimensions [mm]	IMEI	DUT Type
Device,	135.0 x 75.0 x 14.0		4G LTE Mobile Wifi

Exposure Conditions

Phantom Section, TSL	Position, Test Distance [mm]	Band	Group, UID	Frequency [MHz], Channel Number	Conversion Factor	TSL Conductivity [S/m]	TSL Permittivity
Flat, HSL600-10000MHz	BACK, 10.00	Band 5	WCDMA, 10011-CAC	826,400, 4132	9.62	0.918	40.9

Hardware Setup

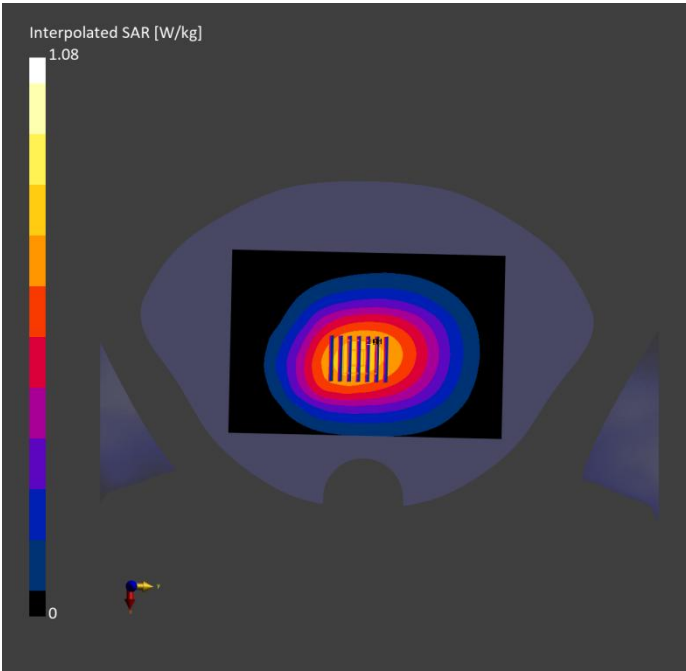
Phantom	TSL, Measured Date	Probe, Calibration Date	DAE, Calibration Date
Twin-SAM V8.0 (30deg probe tilt) - 2097	HSL600-10000MHz, 2024-Apr-08	EX3DV4 - SN7738, 2023-12-13	DAE4 Sn1725, 2023-10-26

Scan Setup

	Area Scan	Zoom Scan
Grid Extents [mm]	120.0 x 180.0	30.0 x 30.0 x 30.0
Grid Steps [mm]	15.0 x 15.0	6.0 x 6.0 x 1.5
Sensor Surface [mm]	3.0	1.4
Graded Grid	N/A	Yes
Grading Ratio	N/A	1.5
MAIA	N/A	N/A
Surface Detection	VMS + 6p	VMS + 6p
Scan Method	Measured	Measured

Measurement Results

	Area Scan	Zoom Scan
Date	2024-04-08	2024-04-08
psSAR1g [W/kg]	0.686	0.714
psSAR10g [W/kg]	0.481	0.521
Power Drift [dB]	0.08	-0.11
Power Scaling	Disabled	Disabled
Scaling Factor [dB]		
TSL Correction	No correction	No correction
M2/M1 [%]		85.0
Dist 3dB Peak [mm]		> 15.0



Measurement Report for Device, P06 LTE 4_QPSK20M_Rear Face_1cm_Ch20050_1RB_OS50

Device under Test Properties

Model, Manufacturer	Dimensions [mm]	IMEI	DUT Type
Device,	135.0 x 75.0 x 14.0		4G LTE Mobile Wifi

Exposure Conditions

Phantom Section, TSL	Position, Test Distance [mm]	Band	Group, UID	Frequency [MHz], Channel Number	Conversion Factor	TSL Conductivity [S/m]	TSL Permittivity
Flat, HSL600-10000MHz	BACK, 10.00	Band 4	LTE-FDD, 10169-CAF	1720.000, 20050	8.35	1.36	40.2

Hardware Setup

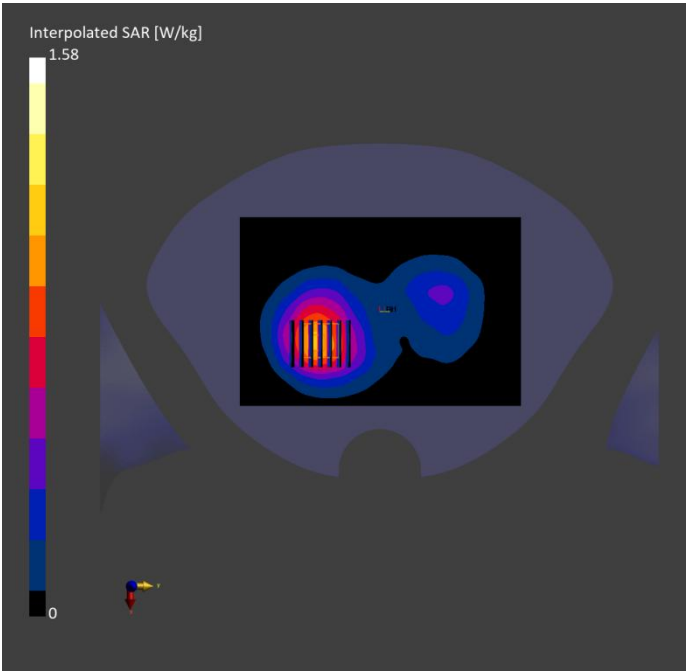
Phantom	TSL, Measured Date	Probe, Calibration Date	DAE, Calibration Date
Twin-SAM V8.0 (30deg probe tilt) - 2097	HSL600-10000MHz, 2024-Apr-11	EX3DV4 - SN7738, 2023-12-13	DAE4 Sn1725, 2023-10-26

Scan Setup

	Area Scan	Zoom Scan
Grid Extents [mm]	120.0 x 180.0	30.0 x 30.0 x 30.0
Grid Steps [mm]	15.0 x 15.0	6.0 x 6.0 x 1.5
Sensor Surface [mm]	3.0	1.4
Graded Grid	N/A	Yes
Grading Ratio	N/A	1.5
MAIA	N/A	N/A
Surface Detection	VMS + 6p	VMS + 6p
Scan Method	Measured	Measured

Measurement Results

	Area Scan	Zoom Scan
Date	2024-04-11	2024-04-11
psSAR1g [W/kg]	0.919	0.960
psSAR10g [W/kg]	0.563	0.594
Power Drift [dB]	-0.04	0.02
Power Scaling	Disabled	Disabled
Scaling Factor [dB]		
TSL Correction	No correction	No correction
M2/M1 [%]		84.6
Dist 3dB Peak [mm]		17.9



Measurement Report for Device, P07 LTE 5_QPSK10M_Rear Face_1cm_Ch20525_1RB_OS24

Device under Test Properties

Model, Manufacturer	Dimensions [mm]	IMEI	DUT Type
Device,	135.0 x 75.0 x 14.0		4G LTE Mobile Wifi

Exposure Conditions

Phantom Section, TSL	Position, Test Distance [mm]	Band	Group, UID	Frequency [MHz], Channel Number	Conversion Factor	TSL Conductivity [S/m]	TSL Permittivity
Flat, HSL600-10000MHz	BACK, 10.00	Band 5	LTE-FDD, 10175-CAH	836.500, 20525	9.62	0.943	43.2

Hardware Setup

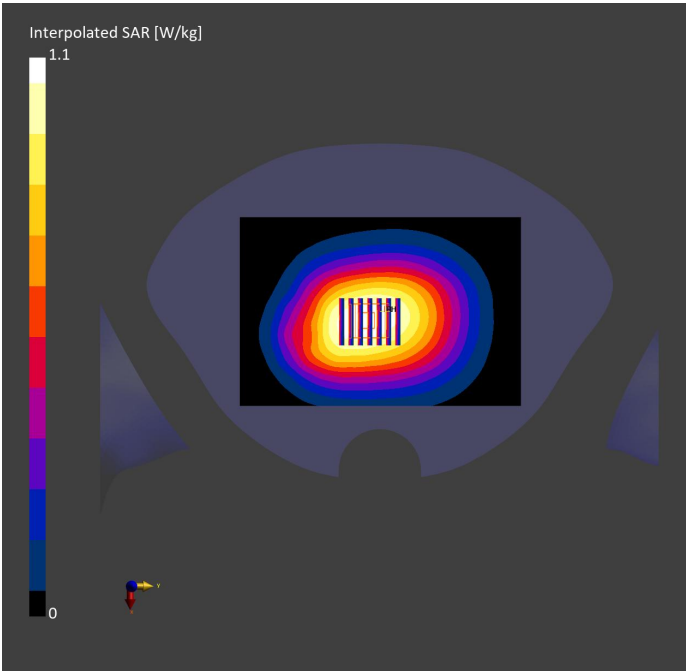
Phantom	TSL, Measured Date	Probe, Calibration Date	DAE, Calibration Date
Twin-SAM V8.0 (30deg probe tilt) - 2097	HSL600-10000MHz, 2024-Apr-08	EX3DV4 - SN7738, 2023-12-13	DAE4 Sn1725, 2023-10-26

Scan Setup

	Area Scan	Zoom Scan
Grid Extents [mm]	120.0 x 180.0	30.0 x 30.0 x 30.0
Grid Steps [mm]	15.0 x 15.0	6.0 x 6.0 x 1.5
Sensor Surface [mm]	3.0	1.4
Graded Grid	N/A	Yes
Grading Ratio	N/A	1.5
MAIA	N/A	N/A
Surface Detection	VMS + 6p	VMS + 6p
Scan Method	Measured	Measured

Measurement Results

	Area Scan	Zoom Scan
Date	2024-04-08	2024-04-08
psSAR1g [W/kg]	0.688	0.731
psSAR10g [W/kg]	0.484	0.532
Power Drift [dB]	0.03	-0.01
Power Scaling	Disabled	Disabled
Scaling Factor [dB]		
TSL Correction	No correction	No correction
M2/M1 [%]		85.6
Dist 3dB Peak [mm]		> 15.0



Measurement Report for Device, P08 LTE 7_QPSK20M_Rear Face_1cm_Ch20850_1RB_OS50

Device under Test Properties

Model, Manufacturer	Dimensions [mm]	IMEI	DUT Type
Device,	135.0 x 75.0 x 14.0		4G LTE Mobile Wifi

Exposure Conditions

Phantom Section, TSL	Position, Test Distance [mm]	Band	Group, UID	Frequency [MHz], Channel Number	Conversion Factor	TSL Conductivity [S/m]	TSL Permittivity
Flat, HSL600-10000MHz	BACK, 10.00	Band 7	LTE-FDD, 10169-CAF	2510.000, 20850	7.6	1.88	39.5

Hardware Setup

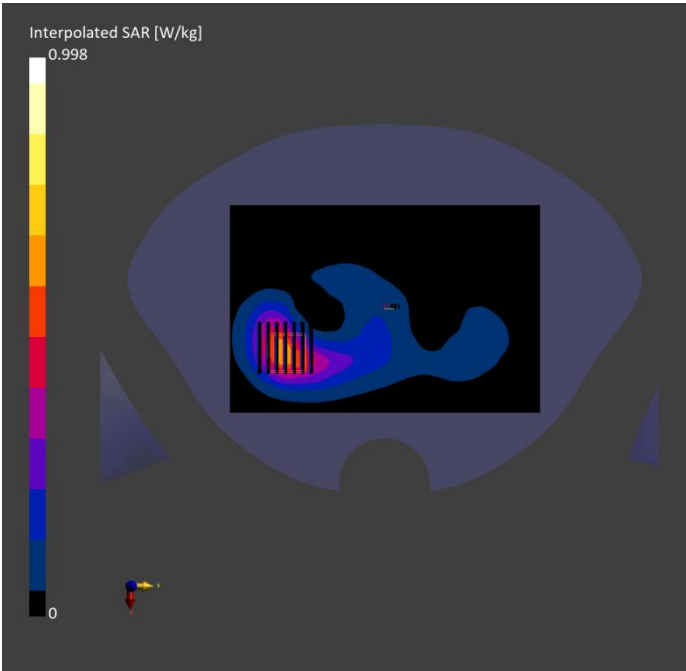
Phantom	TSL, Measured Date	Probe, Calibration Date	DAE, Calibration Date
Twin-SAM V8.0 (30deg probe tilt) - 2097	HSL600-10000MHz, 2024-Apr-09	EX3DV4 - SN7738, 2023-12-13	DAE4 Sn1725, 2023-10-26

Scan Setup

	Area Scan	Zoom Scan
Grid Extents [mm]	120.0 x 180.0	30.0 x 30.0 x 30.0
Grid Steps [mm]	10.0 x 10.0	5.0 x 5.0 x 1.5
Sensor Surface [mm]	3.0	1.4
Graded Grid	N/A	Yes
Grading Ratio	N/A	1.5
MAIA	N/A	N/A
Surface Detection	VMS + 6p	VMS + 6p
Scan Method	Measured	Measured

Measurement Results

	Area Scan	Zoom Scan
Date	2024-04-09	2024-04-09
psSAR1g [W/kg]	0.526	0.507
psSAR10g [W/kg]	0.268	0.259
Power Drift [dB]	0.01	0.01
Power Scaling	Disabled	Disabled
Scaling Factor [dB]		
TSL Correction	No correction	No correction
M2/M1 [%]		78.9
Dist 3dB Peak [mm]		12.1



Measurement Report for Device, P09 LTE 12_QPSK10M_Rear Face_1cm_Ch23095_1RB_OS24

Device under Test Properties

Model, Manufacturer	Dimensions [mm]	IMEI	DUT Type
Device,	135.0 x 75.0 x 14.0		4G LTE Mobile Wifi

Exposure Conditions

Phantom Section, TSL	Position, Test Distance [mm]	Band	Group, UID	Frequency [MHz], Channel Number	Conversion Factor	TSL Conductivity [S/m]	TSL Permittivity
Flat, HSL600-10000MHz	BACK, 10.00	Band 12	LTE-FDD, 10175-CAH	707.500, 23095	10.01	0.894	43.6

Hardware Setup

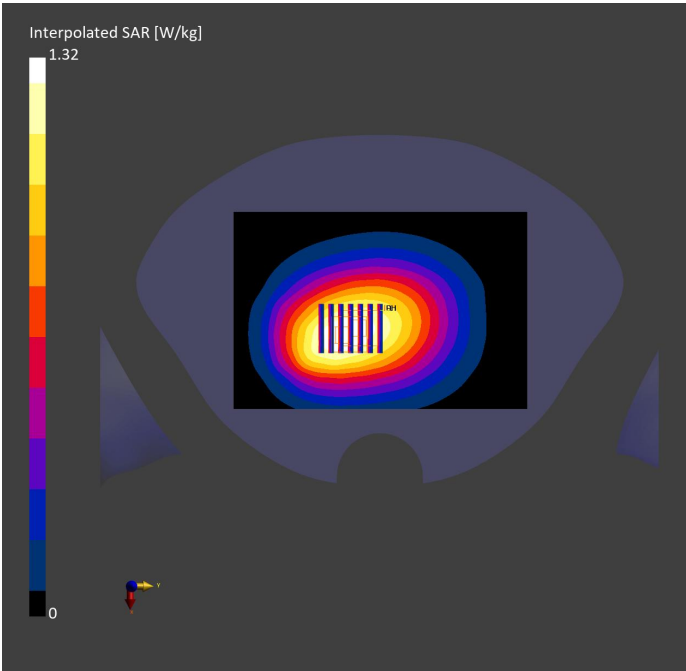
Phantom	TSL, Measured Date	Probe, Calibration Date	DAE, Calibration Date
Twin-SAM V8.0 (30deg probe tilt) - 2097	HSL600-10000MHz, 2024-Apr-09	EX3DV4 - SN7738, 2023-12-13	DAE4 Sn1725, 2023-10-26

Scan Setup

	Area Scan	Zoom Scan
Grid Extents [mm]	120.0 x 180.0	30.0 x 30.0 x 30.0
Grid Steps [mm]	15.0 x 15.0	6.0 x 6.0 x 1.5
Sensor Surface [mm]	3.0	1.4
Graded Grid	N/A	Yes
Grading Ratio	N/A	1.5
MAIA	N/A	N/A
Surface Detection	VMS + 6p	VMS + 6p
Scan Method	Measured	Measured

Measurement Results

	Area Scan	Zoom Scan
Date	2024-04-09	2024-04-09
psSAR1g [W/kg]	0.819	0.862
psSAR10g [W/kg]	0.577	0.614
Power Drift [dB]	0.01	0.00
Power Scaling	Disabled	Disabled
Scaling Factor [dB]		
TSL Correction	No correction	No correction
M2/M1 [%]		85.5
Dist 3dB Peak [mm]		> 15.0



Measurement Report for Device, P010 LTE 13_QPSK10M_Rear Face_1cm_Ch23230_1RB_OS24

Device under Test Properties

Model, Manufacturer	Dimensions [mm]	IMEI	DUT Type
Device,	135.0 x 75.0 x 14.0		4G LTE Mobile Wifi

Exposure Conditions

Phantom Section, TSL	Position, Test Distance [mm]	Band	Group, UID	Frequency [MHz], Channel Number	Conversion Factor	TSL Conductivity [S/m]	TSL Permittivity
Flat, HSL600-10000MHz	BACK, 10.00	Band 13	LTE-FDD, 10175-CAH	782.000, 23230	10.01	0.922	43.4

Hardware Setup

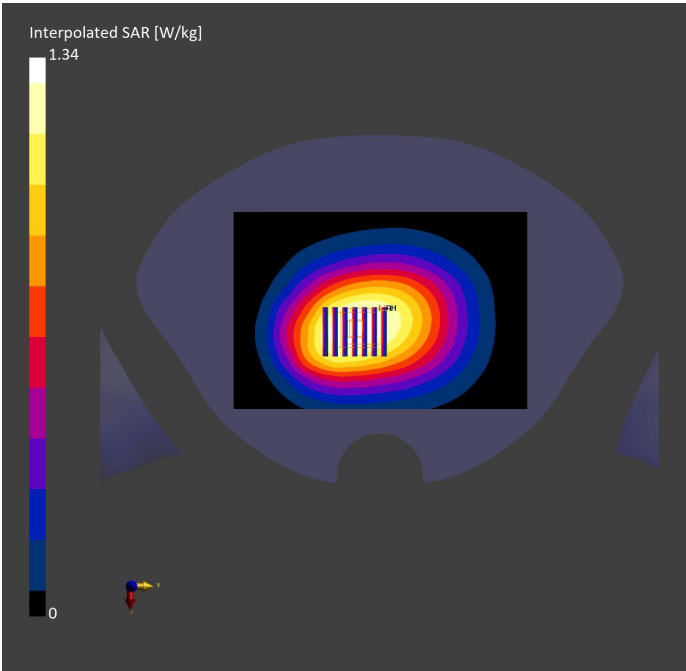
Phantom	TSL, Measured Date	Probe, Calibration Date	DAE, Calibration Date
Twin-SAM V8.0 (30deg probe tilt) - 2097	HSL600-10000MHz, 2024-Apr-09	EX3DV4 - SN7738, 2023-12-13	DAE4 Sn1725, 2023-10-26

Scan Setup

	Area Scan	Zoom Scan
Grid Extents [mm]	120.0 x 180.0	30.0 x 30.0 x 30.0
Grid Steps [mm]	15.0 x 15.0	6.0 x 6.0 x 1.5
Sensor Surface [mm]	3.0	1.4
Graded Grid	N/A	Yes
Grading Ratio	N/A	1.5
MAIA	N/A	N/A
Surface Detection	VMS + 6p	VMS + 6p
Scan Method	Measured	Measured

Measurement Results

	Area Scan	Zoom Scan
Date	2024-04-09	2024-04-09
psSAR1g [W/kg]	0.852	0.883
psSAR10g [W/kg]	0.601	0.641
Power Drift [dB]	0.07	-0.01
Power Scaling	Disabled	Disabled
Scaling Factor [dB]		
TSL Correction	No correction	No correction
M2/M1 [%]		85.7
Dist 3dB Peak [mm]		> 15.0



Measurement Report for Device, P11 LTE 25_QPSK20M_Rear Face_1cm_Ch26365_1RB_OS50

Device under Test Properties

Model, Manufacturer	Dimensions [mm]	IMEI	DUT Type
Device,	135.0 x 75.0 x 14.0		4G LTE Mobile Wifi

Exposure Conditions

Phantom Section, TSL	Position, Test Distance [mm]	Band	Group, UID	Frequency [MHz], Channel Number	Conversion Factor	TSL Conductivity [S/m]	TSL Permittivity
Flat, HSL600-10000MHz	BACK, 10.00	Band 25	LTE-FDD, 10169-CAF	1882.500, 26365	8.0	1.44	39.9

Hardware Setup

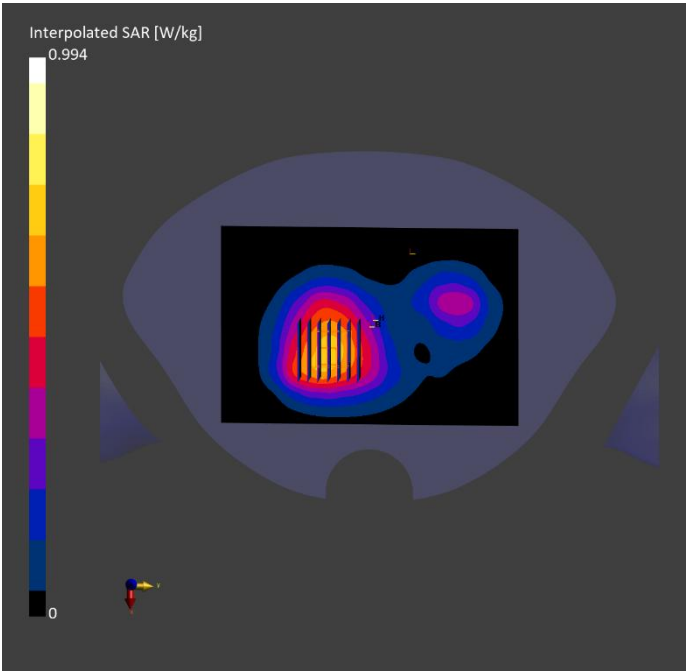
Phantom	TSL, Measured Date	Probe, Calibration Date	DAE, Calibration Date
Twin-SAM V8.0 (30deg probe tilt) - 2097	HSL600-10000MHz, 2024-Apr-10	EX3DV4 - SN7738, 2023-12-13	DAE4 Sn1725, 2023-10-26

Scan Setup

	Area Scan	Zoom Scan
Grid Extents [mm]	120.0 x 180.0	30.0 x 30.0 x 30.0
Grid Steps [mm]	15.0 x 15.0	6.0 x 6.0 x 1.5
Sensor Surface [mm]	3.0	1.4
Graded Grid	N/A	Yes
Grading Ratio	N/A	1.5
MAIA	N/A	N/A
Surface Detection	VMS + 6p	VMS + 6p
Scan Method	Measured	Measured

Measurement Results

	Area Scan	Zoom Scan
Date	2024-04-10	2024-04-10
psSAR1g [W/kg]	0.597	0.612
psSAR10g [W/kg]	0.374	0.392
Power Drift [dB]	0.03	0.12
Power Scaling	Disabled	Disabled
Scaling Factor [dB]		
TSL Correction	No correction	No correction
M2/M1 [%]		84.7
Dist 3dB Peak [mm]		> 15.0



Measurement Report for Device, P12 LTE 26_QPSK15M_Rear Face_1cm_Ch26765_1RB_OS37

Device under Test Properties

Model, Manufacturer	Dimensions [mm]	IMEI	DUT Type
Device,	135.0 x 75.0 x 14.0		4G LTE Mobile Wifi

Exposure Conditions

Phantom Section, TSL	Position, Test Distance [mm]	Band	Group, UID	Frequency [MHz], Channel Number	Conversion Factor	TSL Conductivity [S/m]	TSL Permittivity
Flat, HSL600-10000MHz	BACK, 10.00	Band 26	LTE-FDD, 10181-CAF	821.500, 26765	9.62	0.937	43.2

Hardware Setup

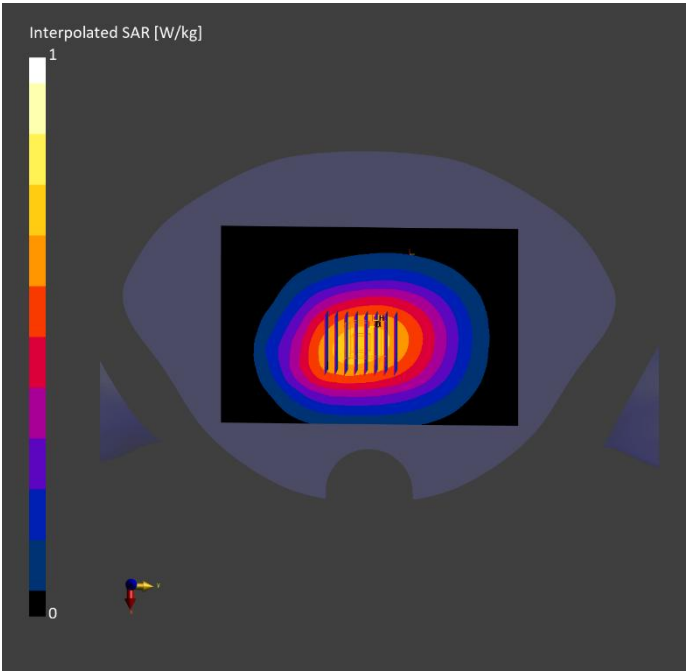
Phantom	TSL, Measured Date	Probe, Calibration Date	DAE, Calibration Date
Twin-SAM V8.0 (30deg probe tilt) - 2097	HSL600-10000MHz, 2024-Apr-08	EX3DV4 - SN7738, 2023-12-13	DAE4 Sn1725, 2023-10-26

Scan Setup

	Area Scan	Zoom Scan
Grid Extents [mm]	120.0 x 180.0	30.0 x 30.0 x 30.0
Grid Steps [mm]	15.0 x 15.0	6.0 x 6.0 x 1.5
Sensor Surface [mm]	3.0	1.4
Graded Grid	N/A	Yes
Grading Ratio	N/A	1.5
MAIA	N/A	N/A
Surface Detection	VMS + 6p	VMS + 6p
Scan Method	Measured	Measured

Measurement Results

	Area Scan	Zoom Scan
Date	2024-04-08	2024-04-08
psSAR1g [W/kg]	0.636	0.677
psSAR10g [W/kg]	0.448	0.498
Power Drift [dB]	-0.16	0.01
Power Scaling	Disabled	Disabled
Scaling Factor [dB]		
TSL Correction	No correction	No correction
M2/M1 [%]		86.8
Dist 3dB Peak [mm]		> 15.0



Measurement Report for Device, P13 LTE 38_QPSK20M_Top Side_1cm_Ch37850_1RB_OS50

Device under Test Properties

Model, Manufacturer	Dimensions [mm]	IMEI	DUT Type
Device,	135.0 x 75.0 x 14.0		4G LTE Mobile Wifi

Exposure Conditions

Phantom Section, TSL	Position, Test Distance [mm]	Band	Group, UID	Frequency [MHz], Channel Number	Conversion Factor	TSL Conductivity [S/m]	TSL Permittivity
Flat, HSL600-10000MHz	EDGE TOP, 10.00	Band 38	LTE-TDD, 10172-CAH	2580.000, 37850	7.42	1.93	39.3

Hardware Setup

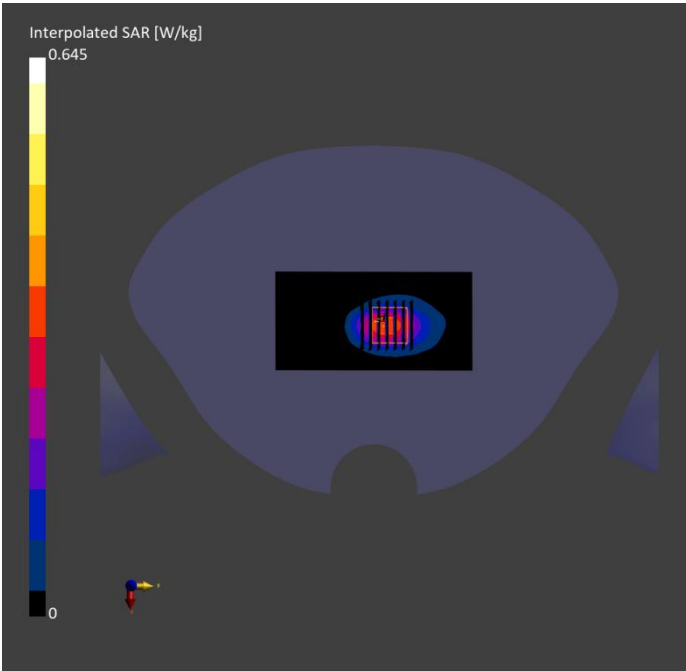
Phantom	TSL, Measured Date	Probe, Calibration Date	DAE, Calibration Date
Twin-SAM V8.0 (30deg probe tilt) - 2097	HSL600-10000MHz, 2024-Apr-12	EX3DV4 - SN7738, 2023-12-13	DAE4 Sn1725, 2023-10-26

Scan Setup

	Area Scan	Zoom Scan
Grid Extents [mm]	60.0 x 120.0	30.0 x 30.0 x 30.0
Grid Steps [mm]	10.0 x 10.0	5.0 x 5.0 x 1.5
Sensor Surface [mm]	3.0	1.4
Graded Grid	N/A	Yes
Grading Ratio	N/A	1.5
MAIA	Y	N/A
Surface Detection	VMS + 6p	VMS + 6p
Scan Method	Measured	Measured

Measurement Results

	Area Scan	Zoom Scan
Date	2024-04-12	2024-04-12
psSAR1g [W/kg]	0.298	0.306
psSAR10g [W/kg]	0.144	0.143
Power Drift [dB]	0.04	0.03
Power Scaling	Disabled	Disabled
Scaling Factor [dB]		
TSL Correction	No correction	No correction
M2/M1 [%]		77.9
Dist 3dB Peak [mm]		9.5



Measurement Report for Device, P14 LTE 41_QPSK20M_Top Side_1cm_Ch39750_1RB_OS50

Device under Test Properties

Model, Manufacturer	Dimensions [mm]	IMEI	DUT Type
Device,	135.0 x 75.0 x 14.0		4G LTE Mobile Wifi

Exposure Conditions

Phantom Section, TSL	Position, Test Distance [mm]	Band	Group, UID	Frequency [MHz], Channel Number	Conversion Factor	TSL Conductivity [S/m]	TSL Permittivity
Flat, HSL600-10000MHz	EDGE TOP, 10.00	Band 41	LTE-TDD, 10172-CAH	2506.000, 39750	7.6	1.88	39.5

Hardware Setup

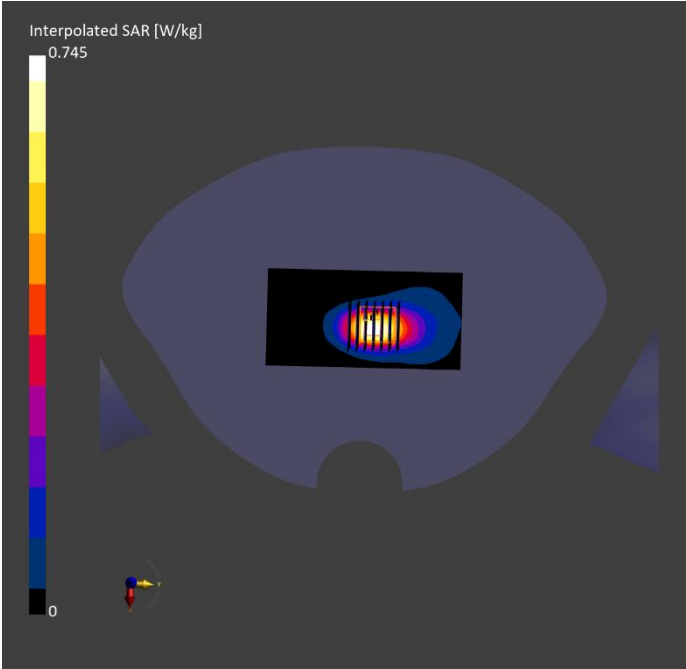
Phantom	TSL, Measured Date	Probe, Calibration Date	DAE, Calibration Date
Twin-SAM V8.0 (30deg probe tilt) - 2097	HSL600-10000MHz, 2024-Apr-12	EX3DV4 - SN7738, 2023-12-13	DAE4 Sn1725, 2023-10-26

Scan Setup

	Area Scan	Zoom Scan
Grid Extents [mm]	60.0 x 120.0	30.0 x 30.0 x 30.0
Grid Steps [mm]	10.0 x 10.0	5.0 x 5.0 x 1.5
Sensor Surface [mm]	3.0	1.4
Graded Grid	N/A	Yes
Grading Ratio	N/A	1.5
MAIA	N/A	N/A
Surface Detection	VMS + 6p	VMS + 6p
Scan Method	Measured	Measured

Measurement Results

	Area Scan	Zoom Scan
Date	2024-04-12	2024-04-12
psSAR1g [W/kg]	0.359	0.359
psSAR10g [W/kg]	0.173	0.167
Power Drift [dB]	-0.10	0.14
Power Scaling	Disabled	Disabled
Scaling Factor [dB]		
TSL Correction	No correction	No correction
M2/M1 [%]		79.0
Dist 3dB Peak [mm]		9.0



Measurement Report for Device, P15 802.11b_Rear Face_1cm_Ch11

Device under Test Properties

Model, Manufacturer	Dimensions [mm]	IMEI	DUT Type
Device,	135.0 x 75.0 x 14.0		4G LTE Mobile Wifi

Exposure Conditions

Phantom Section, TSL	Position, Test Distance [mm]	Band	Group, UID	Frequency [MHz], Channel Number	Conversion Factor	TSL Conductivity [S/m]	TSL Permittivity
Flat, HSL600-10000MHz	BACK, 10.00	WLAN 2.4GHz	WLAN, 10012-CAB	2462.000, 11	7.6	1.84	39.6

Hardware Setup

Phantom	TSL, Measured Date	Probe, Calibration Date	DAE, Calibration Date
Twin-SAM V8.0 (30deg probe tilt) - 2097	HSL600-10000MHz, 2024-Apr-09	EX3DV4 - SN7738, 2023-12-13	DAE4 Sn1725, 2023-10-26

Scan Setup

	Area Scan	Zoom Scan
Grid Extents [mm]	120.0 x 180.0	30.0 x 30.0 x 30.0
Grid Steps [mm]	10.0 x 10.0	5.0 x 5.0 x 1.5
Sensor Surface [mm]	3.0	1.4
Graded Grid	N/A	Yes
Grading Ratio	N/A	1.5
MAIA	Y	Y
Surface Detection	VMS + 6p	VMS + 6p
Scan Method	Measured	Measured

Measurement Results

	Area Scan	Zoom Scan
Date	2024-04-09	2024-04-09
psSAR1g [W/kg]	0.090	0.089
psSAR10g [W/kg]	0.048	0.046
Power Drift [dB]	0.03	-0.06
Power Scaling	Disabled	Disabled
Scaling Factor [dB]		
TSL Correction	No correction	No correction
M2/M1 [%]		77.4
Dist 3dB Peak [mm]		13.2

