

MOTOEYE

头盔智能HUD

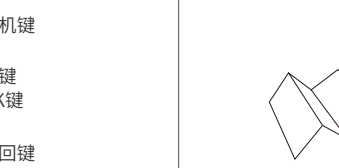
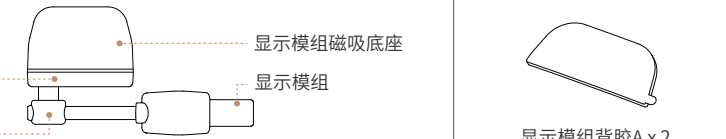
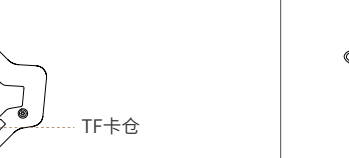
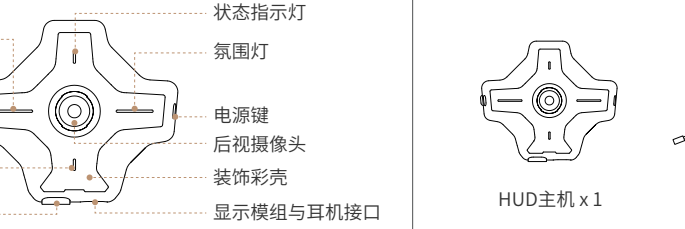
快速指南

本手册适用于以下产品型号

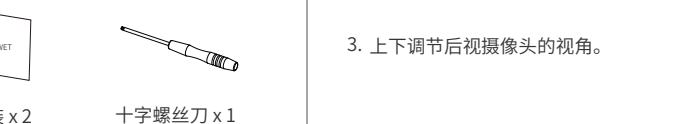
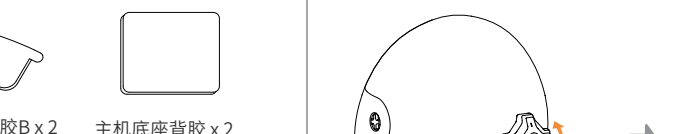
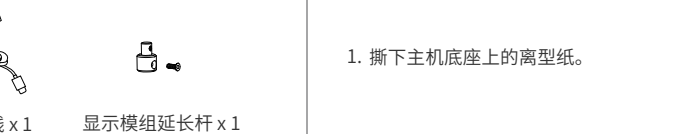
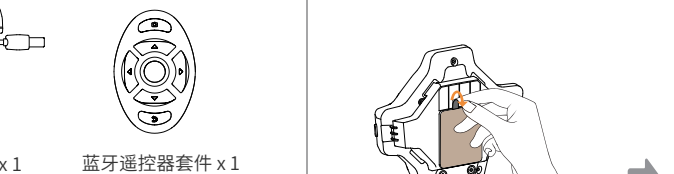
E6/E6-SE
M6/M6-SE

西安维度视界科技有限公司
www.vidoar.com

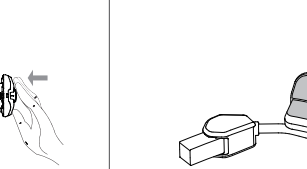
外观说明



包装清单

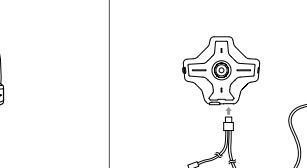


安装HUD主机



1. 撕下主机底座上的离型纸。

2. 将主机底座粘贴在头盔正后方，用手按压，直至粘贴牢固。



3. 上下调节后视摄像头的视角。

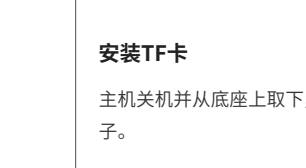
4. 如需取下主机，轻按主机底座上的卡扣锁即可。

安装HUD显示模组



1. 将附件中的背胶粘贴在显示模组底座的A面或B面。

2. 将显示模组底座粘贴在帽檐上，使得显示模组的棱镜处于人眼正前偏上的位置。



3. 将显示模组线缆的插头，插入到HUD主机的显示模组插孔中。

4. 带上头盔开机后微调连接软管和滑轨，使得人眼余光能够看清显示模组中的画面。

安装耳机及TF卡

安装耳机

撕下耳机和麦克风背面的离型纸，将其粘贴在头盔内侧的耳机预留位置，将耳机插头插入到耳机孔中。

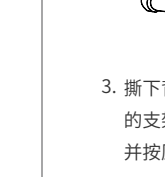


收纳线缆

安装完主机、显示模组和耳机后，将外露的线缆塞进头盔与内部海绵的间隙中，使布线整洁，不影响头盔佩戴。

安装TF卡

主机关机并从底座上取下，使用十字螺丝刀打开TF卡仓，装入TF卡后再装回盖子。



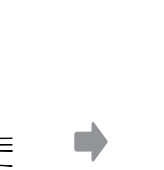
安装蓝牙耳机

安装蓝牙控制器



1. 逆时针方向旋转控制器，将其从底座上拆除。

2. 用扳手将控制器底座安装至控制器固定支架，并将背胶粘贴在支架圆弧位置。



3. 撕下背胶离型纸，将组装好的支架粘贴至机车把手处，并按压确保安装可靠。

4. 如需更换电池，可用硬币将控制器背面电池盖沿逆时针方向打开，更换电池。

功能定义

按键

按键	短按	长按 (2s)
电源键	亮屏/灭屏	开机/关机
上键、下键	向上/向下移动	增大/减小音量
左键、右键	向左/向右移动	--
确认键	确认当前项	打开语音助手
返回键	返回到上一级	返回到主页面
相机键	打开流媒体后视镜	对讲PTT

指示灯

指示灯	亮	灭
状态指示灯-绿灯	系统开机	系统关机
状态指示灯-蓝灯	摄像头工作	摄像头关闭
充电指示灯	正在充电	充满电

音量调节

长按上键，调大音量；
长按下键，调小音量。

开始使用

开机/关机

长按电源键2秒开机/关机；
HUD主机开机后，短按电源键，待机/唤醒HUD显示屏。

注意：
使用前，请先将显示模组插头连接到主机上，再开机；
如发生异常，长按电源键10秒可对HUD进行强制重启。

充电

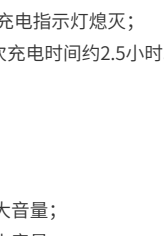
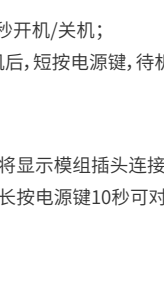
请使用5V充电器对HUD主机充电；
充电时：红色充电指示灯长亮；
电量充满时：充电指示灯熄灭；
HUD主机一次充电时间约2.5小时。

音量调节

长按上键，调大音量；
长按下键，调小音量。

手机APP下载

第一次使用时，需在手机上下载MOTOEYE APP并对HUD连接一次，HUD将自动完成语音、时区、时间等设置。关注MOTOEYE微信公众号，获取更多教程。



本产品详细使用说明，请查阅MOTOEYE手机APP或微信公众号中的《使用帮助》；产品软件升级可能带来操作差异，具体以手机APP中的《使用帮助》为准，恕不另行通知。

蓝牙连接

MOTOEYE手机APP连接：

- (1) HUD开机；
- (2) 手机上下载MOTOEYE APP，注册MOTOEYE账号并登陆；
- (3) 在APP主页面点击“主机”按钮，打开“设备连接”页面；
- (4) 搜索HUD主机，并点击名称进行连接，HUD蓝牙名称为“设备型号”-“SN号”，如M6-47C132C2；
- (5) 连接成功后，“主机”页面会显示HUD主机的设备信息。



蓝牙音频连接：

- 安卓手机：安卓手机客户端可以同时建立HUD与手机的蓝牙数据连接与音频连接（部分机型需在系统设置中手动连接蓝牙音频）；
- iPhone手机：iOS客户端仅能建立HUD与手机的蓝牙数据连接，音频连接需到系统设置-蓝牙连接中手动连接。

互联网连接

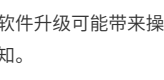
WiFi连接：

- (1) 手机APP与HUD主机建立蓝牙连接后，点击“WiFi”按钮；
- (2) 点击“搜索WiFi”后，选择要连接的WiFi，并输入WiFi密码进行连接。



通过蓝牙共享手机网络：

- (1) 通过蓝牙共享手机网络之前，需先在手机上做如下设置：
iPhone手机：打开“个人热点”开关；
安卓手机：打开“蓝牙共享网络”开关。
- (2) 在HUD主机的设置菜单，进入“蓝牙共享网络”页面，点击“连接”；
- (3) 如果打开“蓝牙共享网络”页面中的“自动连接”开关，则当HUD与手机蓝牙连接时会自动联网。



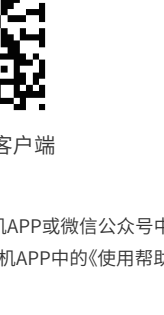
车把蓝牙遥控器使用

产品出厂时，HUD主机与车把遥控器已配对完成，HUD开机后，按下遥控器任意键等待几秒，遥控器即可与主机恢复连接。HUD关机后，遥控器会自动进入低功耗休眠模式。

按下遥控器按键，遥控器上的绿灯亮，表示电量正常。
按下遥控器按键，遥控器上的红灯亮，表示电量低，应尽快更换电池。

如果需要重新配对蓝牙遥控器，可按照下面方法进行的操作：

- (1) 同时按住遥控器的相机键与返回键3秒以上，激活遥控器配对广播，此时遥控器上的红灯与蓝灯交替闪烁；
- (2) 手机与HUD主机建立蓝牙连接后，点击APP主页或“设备连接”页面的控制器按钮；
- (3) 点击《使用说明》；
- (4) 选择要连接的蓝牙控制器进行连接。



保修政策

在正常使用本产品过程中，如果出现非人为损坏的质量问题，经本公司检测确定后，可享受以下服务：

- (1) 自签收次日起7天内出现产品质量问题，用户可享受免费退货或换货服务；
- (2) 自签收次日起15天内出现产品质量问题，用户可享受免费换货或维修服务；
- (3) 自签收次日起1年内出现产品质量问题，用户可享受免费维修服务。

在使用过程中，符合下列情形之一则不在三包范围内：

- (1) 因不可抗力因素造成损坏的，如地震、火灾、洪水、台风等；
- (2) 消费者因使用、维护、保管不当造成损坏的；
- (3) 未按《使用说明》的要求使用、保养及调整造成的任何损坏；
- (4) 未经过本公司授权的人员私自拆卸、维修、改装等情形造成的任何损坏；
- (5) 已超出三包有效期限；
- (6) 国家法律、法规规定的不属于“三包”范畴的其他情形。

产品三包凭证

产品信息	产品型号	
	SN号码	
	购买日期	
用户信息	姓名	
	电话	
	地址	
经销商信息	名称	
	电话	
	地址	

MOTOEYE

Helmet Smart HUD

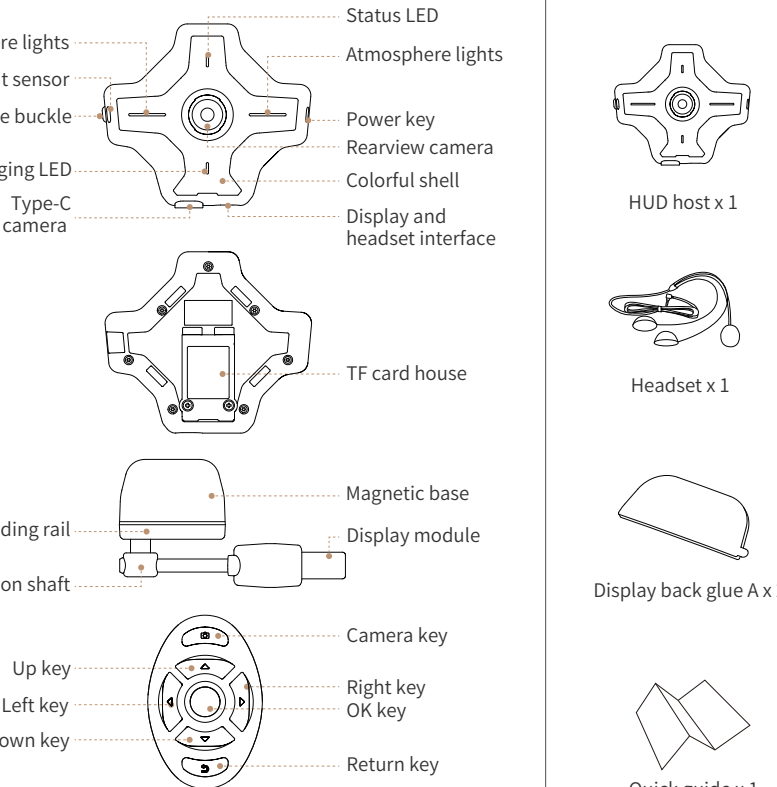
Quick Guide

This manual is applicable to the following models

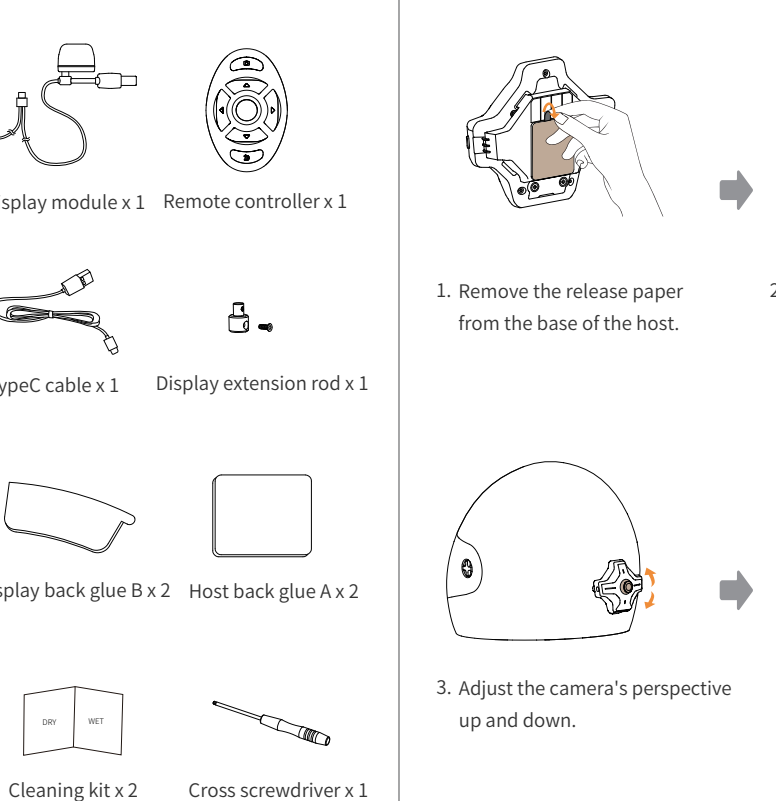
E6/E6-SE
M6/M6-SE

Xi'an Vidoar Technologies Co., Ltd.
www.vidoar.com

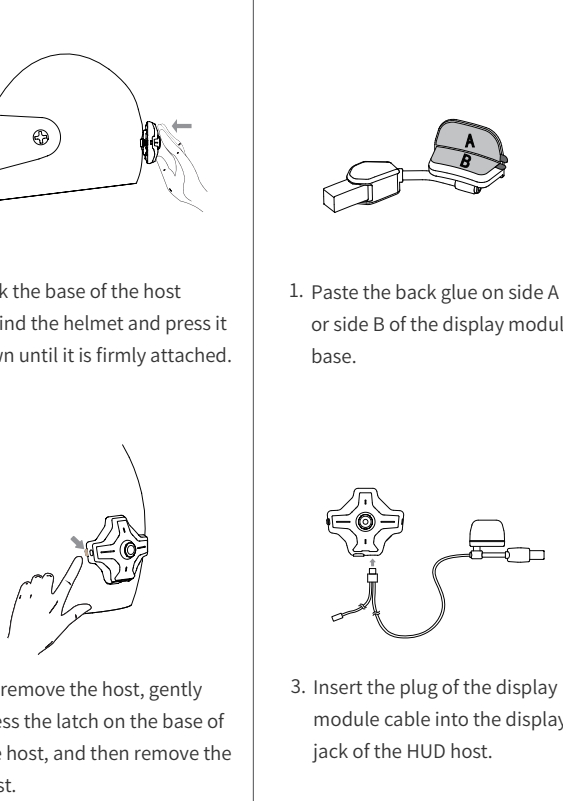
Appearance Description



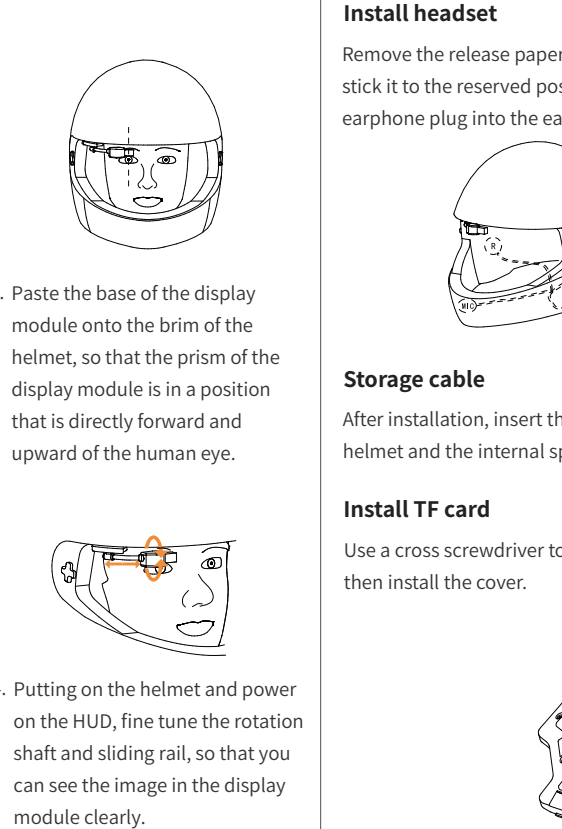
Packing List



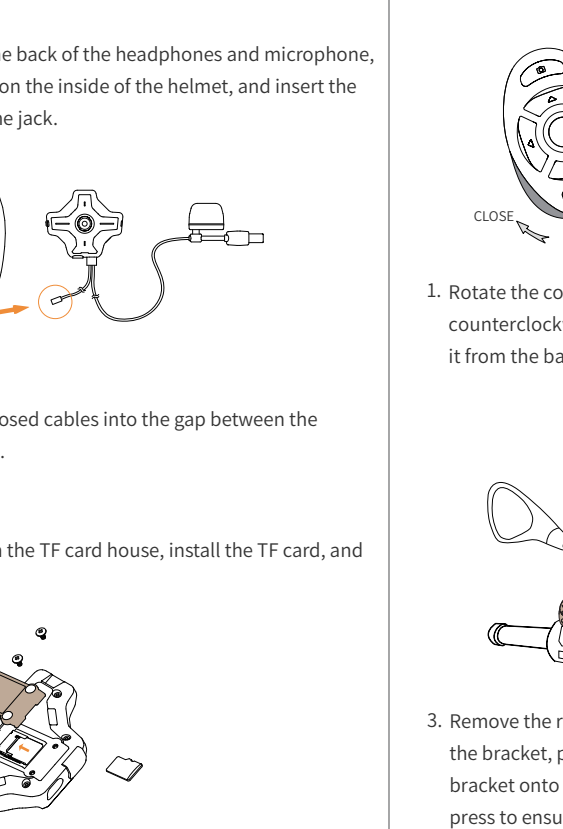
Install HUD Host



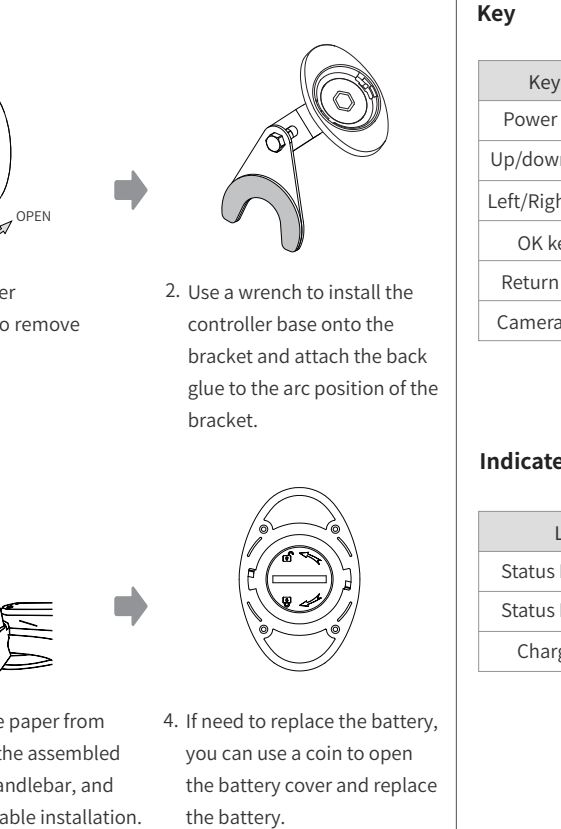
Install Display Module



Install Headset and TF Card



Install Remote Controller



functional Definition

Key	Short press	Long press (2s)
Power key	On/off screen	Power on/off
Up/down key	Up/down move	Increase/Decrease volume
Left/Right key	Left/down move	--
OK key	Confirm	Start voice control
Return key	Return/back	Go back home
Camera key	Start rearview mirror	Intercom PTT

LED	On	Off
Status LED-green	Power on	Power off
Status LED-blue	Camera is working	Camera is not working
Charging LED	Charging	Charged

Start Using

Power on/off:
Press and hold the power key for 2s to power on/off, After the HUD host is power on, short press the power key to standby/wake up the Display module.

note:
Please connect the display module plug to the host before power on, if an abnormality occurs, pressing and holding the power button for 10s can forcibly restart the device.

Charging:
Please use a 5V charger, when charging: the red charging indicator light remains on, when fully charged: the charging indicator light goes off, the charging time of the HUD is about 2.5 hours at a time.

Volume control:
Long press the up key to increase the volume, long press the down button to decrease the volume.

Download Mobile APP

When using it for the first time, you need to download the **MOTOEYE app on your phone and connect to the HUD once. The HUD will Automatically complete language, time zone, time, and other settings.**

Online Manual

MOTOEYE APP

Product software upgrades may result in operational differences. For latest and detailed instructions of this product, please refer to the User Manual in MOTOEYE APP or scan the Online Manual QR code.

Bluetooth Connection

MOTOEYE APP connection:

- Power on the HUD.
- Download MOTOEYE mobile APP, register and log in.
- Click on the "Device" on the APP homepage.
- Search for the HUD host and click on the name to connect, the name of HUD Bluetooth is : "device model" - "SN number", such as M6-47C132C2.
- After connected, the "Device" page will display the device information.

Bluetooth audio connection:

- Android phone:** Android mobile APP can establish bluetooth data and audio connection between HUD and phone simultaneously. (Some models need to manually connect bluetooth audio in the system settings);
- iPhone:** The iOS APP can only establish a bluetooth data connection between HUD and the phone, and the audio connection needs to be manually connected in System Settings - Bluetooth Connection.

Networks Connection

WiFi connection:

- After establishing the bluetooth connection, click the "WiFi" button.
- Select the WiFi you wanted and enter the password to connect.

Share mobile network through bluetooth:

- Before sharing the mobile network through bluetooth, the following settings need to be made on the phone:
iPhone: Turn on the 'Personal Hotspot' switch.
Android phone: Turn on the "Bluetooth shared network" switch.
- In the settings menu of the HUD host, enter the "Bluetooth network" page and click "Connect".
- If turn on the "Auto Connect" switch on the "Bluetooth network" page, the HUD will automatically connect to the network after connected to the phone's bluetooth audio.

Using The Remote Controller

After the HUD is turned on, press any key on the remote controller and wait for a few seconds. The controller can resume connection to the HUD. After the HUD shuts down, the remote controller will automatically enter low-power sleep mode.

If you need to pair the Bluetooth remote controller again, you can proceed as follows:

- Press and hold the camera button and return button of the controller simultaneously for more than 3 seconds. At this time, the red and blue lights on the remote control flash alternately.
- After establishing a Bluetooth connection between the phone and the HUD host, click the controller button on the APP homepage or "Device Connection" page.
- Click on "Search bluetooth Controller".
- Select the bluetooth controller to connect to.

Warranty Policy

During the normal use of this product, if there are quality issues that are not caused by human factors, the product can enjoy the following services after being tested and confirmed by our company:

- If there is a product quality issue within 7 days from the day after receiving it, users can enjoy free return or exchange services.
- If there is a product quality issue within 15 days from the day after receiving it, users can enjoy free replacement or repair services.
- If there are product quality issues within one year from the day after receiving it, users can enjoy free repair services.

If one of the following conditions is met, it is not covered by the warranty.

- Damage caused by force majeure factors, such as earthquakes, fires, floods, typhoons, etc.
- Damage caused by improper use, maintenance, or storage.
- Damage caused by failure to use, maintain, and adjust according to the requirements of the user manual.
- Damage caused by unauthorized personnel disassembling, repairing, or modifying without authorization from our company.
- The warranty period has expired.
- Situations not covered by warranty as stipulated by laws and regulations.

Warranty Card

Products	Model	
	SN number	
	Purchasing date	
User	Name	
	Phone number	
	Address	
Distributor	Name	
	Telephone	
	Address	

FCC Warning:

This equipment has been tested and found to comply with the limits for a Class B digital device, pursuant to part 15 of the FCC Rules. These limits are designed to provide reasonable protection against harmful interference in a residential installation. This equipment generates, uses and can radiate radio frequency energy and, if not installed and used in accordance with the instructions, may cause harmful interference to radio communications. However, there is no guarantee that interference will not occur in a particular installation. If this equipment does cause harmful interference to radio or television reception, which can be determined by turning the equipment off and on, the user is encouraged to try to correct the interference by one or more of the following measures:

- Reorient or relocate the receiving antenna.
- Increase the separation between the equipment and receiver.
- Connect the equipment into an outlet on a circuit different from that to which the receiver is connected.
- Consult the dealer or an experienced radio/TV technician for help.

Caution: Any changes or modifications to this device not explicitly approved by manufacturer could void your authority to operate this equipment.

This device complies with part 15 of the FCC Rules. Operation is subject to the following two conditions:

(1) This device may not cause harmful interference, and (2) this device must accept any interference received, including interference that may cause undesired operation.

This equipment complies with FCC radiation exposure limits set forth for an uncontrolled environment. This equipment should be installed and operated with minimum distance 0cm between the radiator and your body.