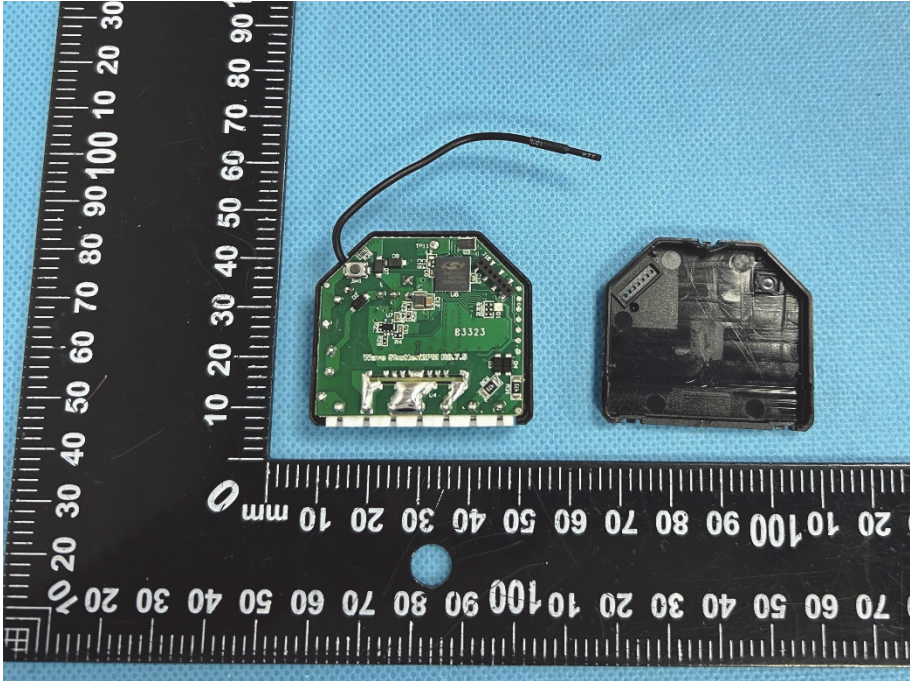
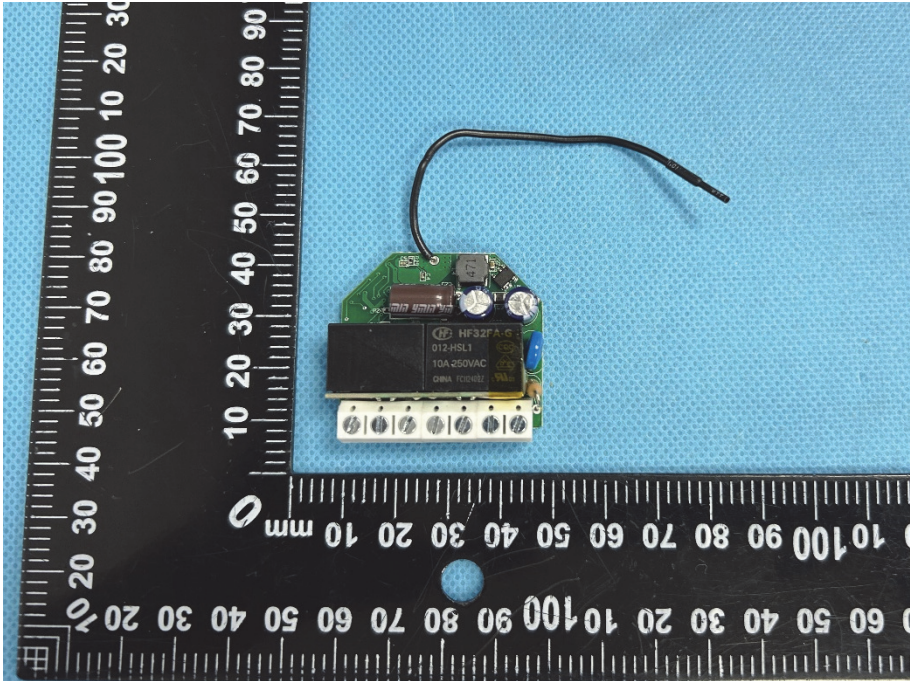
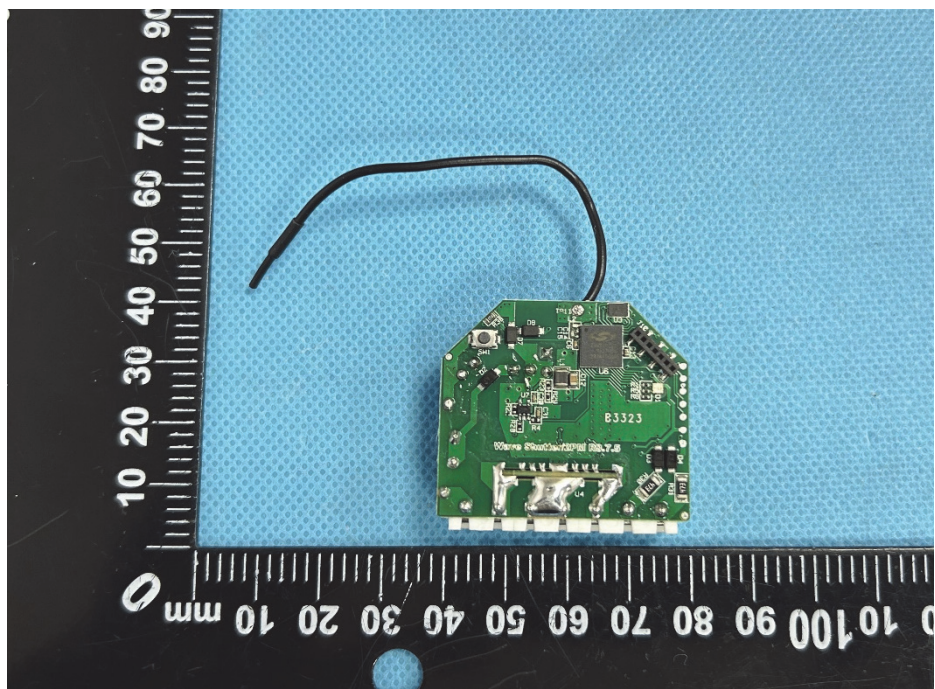


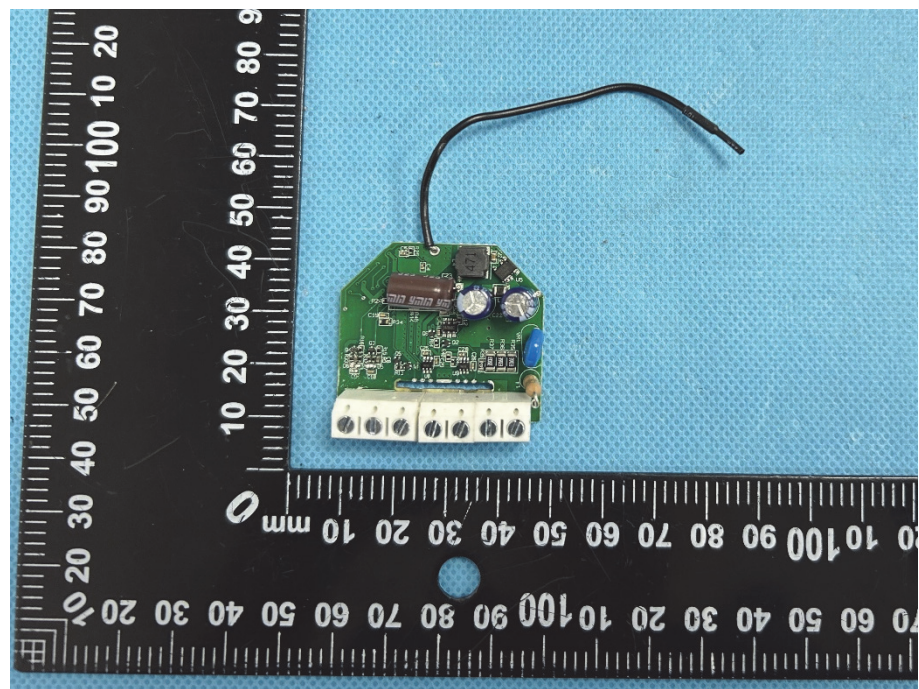
### EXHIBIT 3 - EUT INTERNAL PHOTOGRAPHS

<p><b>EUT Housing and Board View 1</b></p>	 A photograph showing the EUT housing and board. The green PCB is on the left, and the black plastic housing is on the right. A black wire is connected to the board. A black ruler with white markings is placed below the components for scale. The ruler shows measurements in millimeters, with markings every 10mm and sub-markings every 1mm. The PCB has the number 'B3323' printed on it.
<p><b>Solder Board-Component View 1</b></p>	 A close-up photograph of the solder board-component. The green PCB is shown with various components, including a black component labeled 'HF32FA-6 012HSL1 10A 250VAC'. A black wire is connected to the board. A black ruler with white markings is placed below the component for scale. The ruler shows measurements in millimeters, with markings every 10mm and sub-markings every 1mm.

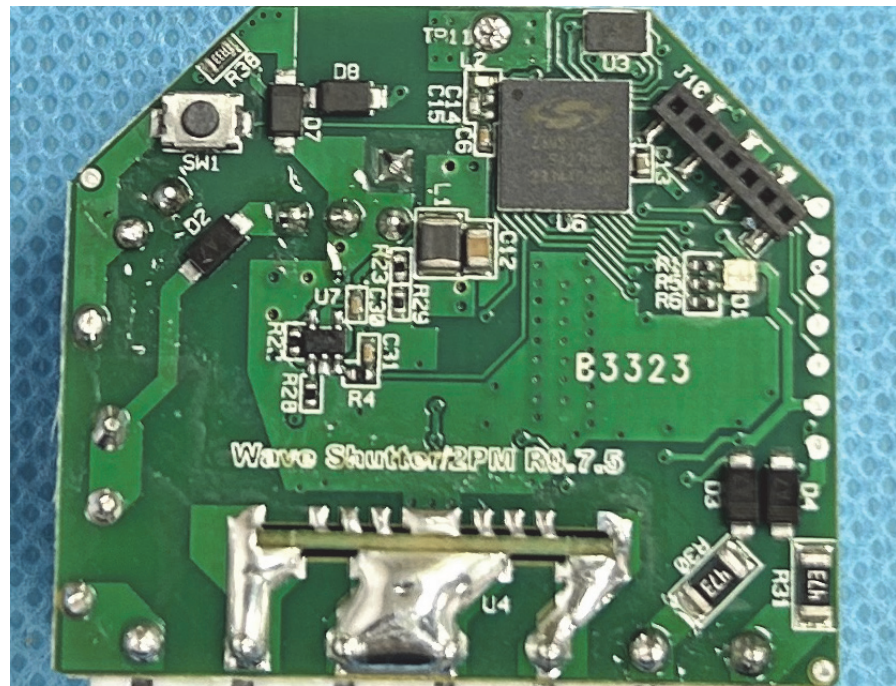
**Solder  
Board-Component  
View 2**



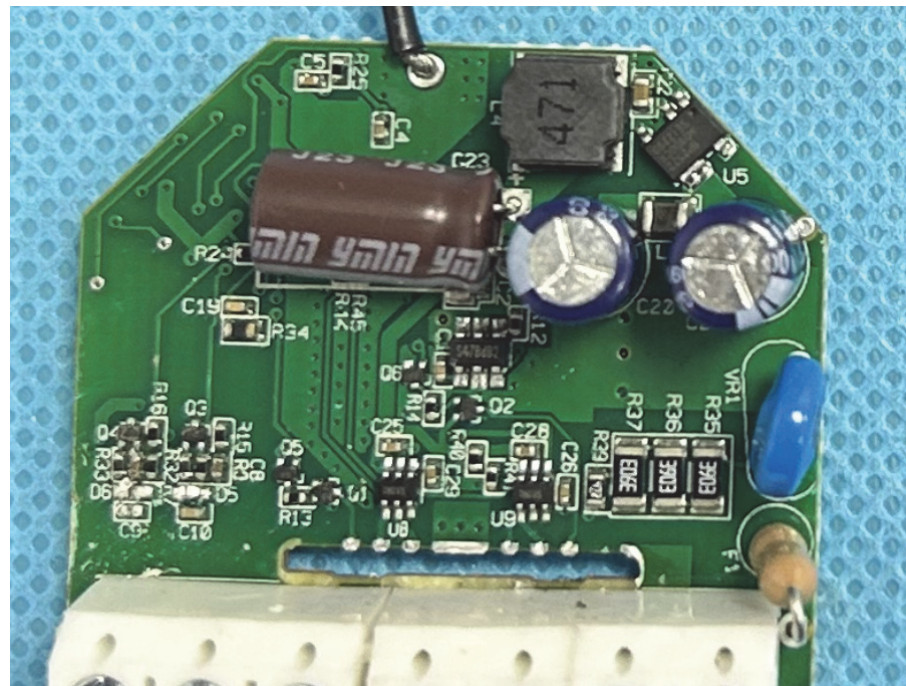
**Solder  
Board-Component  
View 3**

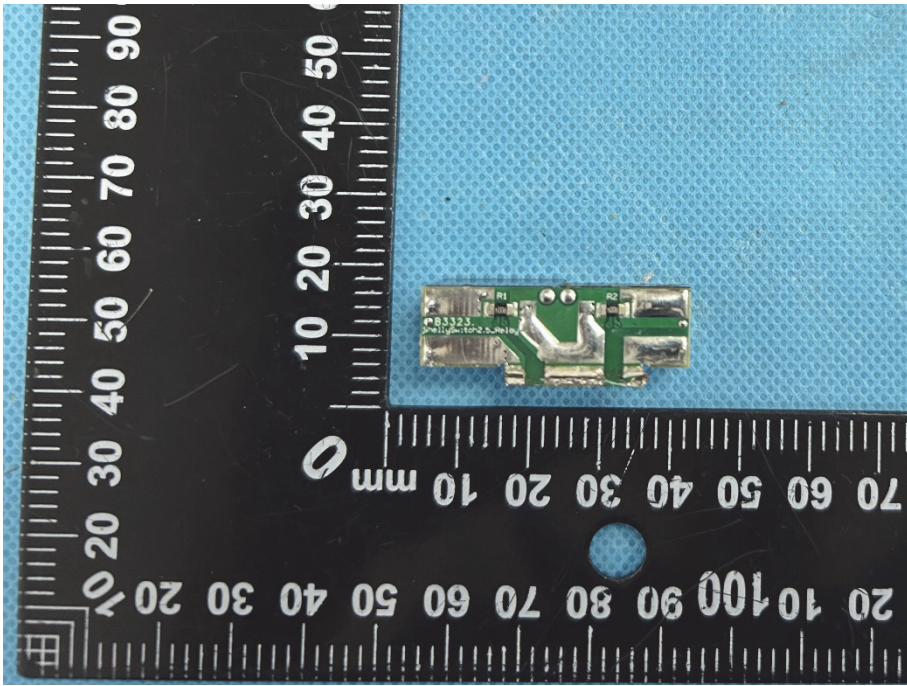
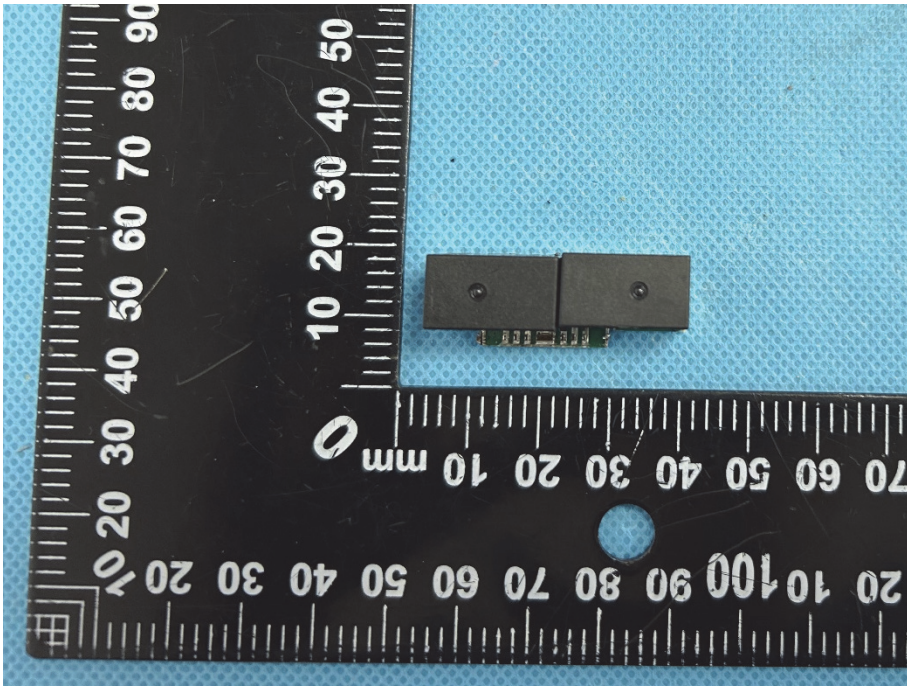


**Solder  
Board-Component  
View 4**

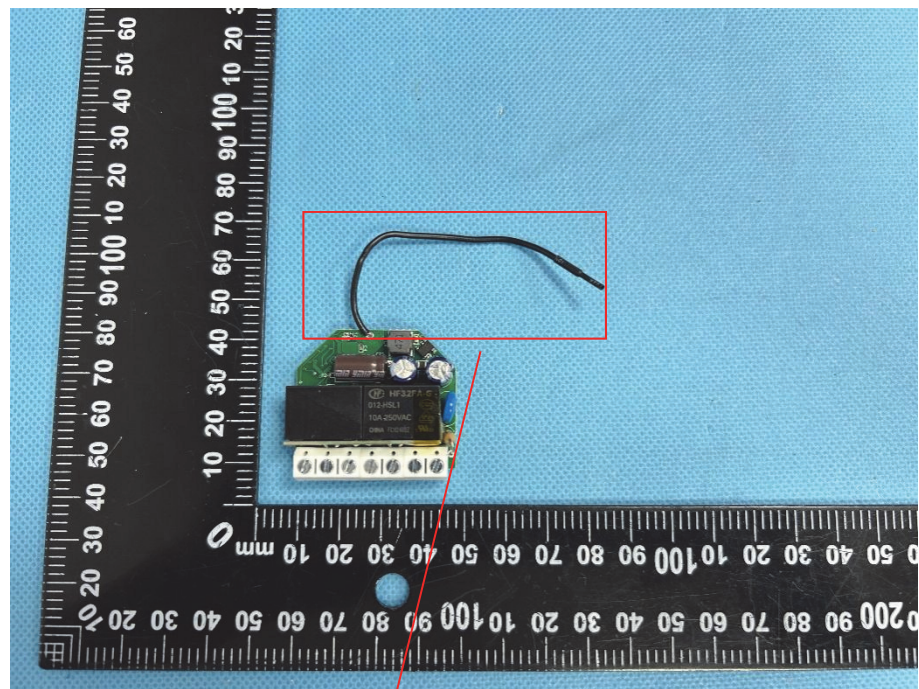


**Solder  
Board-Component  
View 5**



<p><b>Solder Board-Component View 6</b></p>	 A photograph of a small green PCB component with silver solder joints. The component is placed on a blue textured surface next to a black L-shaped ruler with white markings in millimeters. The ruler shows measurements from 0 to 90 mm. The component has some markings, including 'P1', 'P2', and 'B3323'.
<p><b>Solder Board-Component View 7</b></p>	 A photograph of a small black PCB component with silver solder joints. The component is placed on a blue textured surface next to a black L-shaped ruler with white markings in millimeters. The ruler shows measurements from 0 to 90 mm.

**Antenna View**



Z-Wave Ant.