

# HIGH SPEED DRIFT

## 1:43 REMOTE CONTROL DRIFT CAR

### INSTRUCTION MANUAL

#### CONTENTS:

- 1 x Drift 1:43 Electric Remote Control Drift Car
- 1 x RC Transmitter
- 1 x Drift car batteries
- 4 x Drift Tires
- 4 x Grip Tires
- 1 x Instruction Manual
- 1 x Type-c charging cable

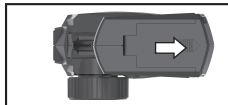
#### BATTERY REQUIREMENT:

Vehicle: 3.7V Battery Pack

Transmitter: 2 x AA 1.5V Batteries (NOT INCLUDED)

#### INSTALLING OR REPLACING THE BATTERIES: FOR TRANSMITTER:

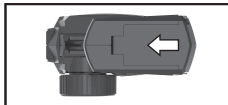
1. Remove the battery lid.
2. Install 2 \*1.5V AA batteries with the correct polarity (+/-) as shown inside the battery compartment.
3. Close the battery cover.



Step 1



Step 2

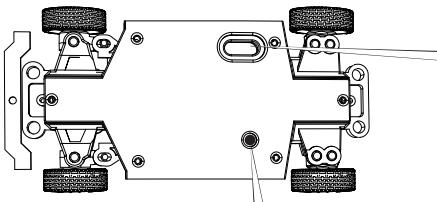


Step 3

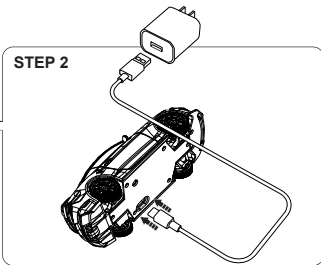
#### FOR VEHICLE:

Insert Type-C for direct charging

#### STEP 1



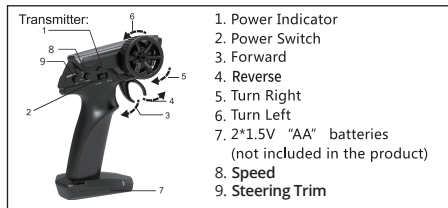
#### STEP 2



1. Power On: Press the power button once to turn on the car.
2. Light Control: While the car is on, press the button to cycle through different light colors.
3. Power Off: Press and hold the red power button to turn off the car.

## HOW TO DRIVE THE RC VEHICLE:

1. Switch ON the vehicle and transmitter.
2. If the vehicle does not run in a straight line, adjust the wheel alignment on the vehicle chassis on the bottom of the vehicle.
3. Remember to switch OFF the vehicle and transmitter when you are done driving.

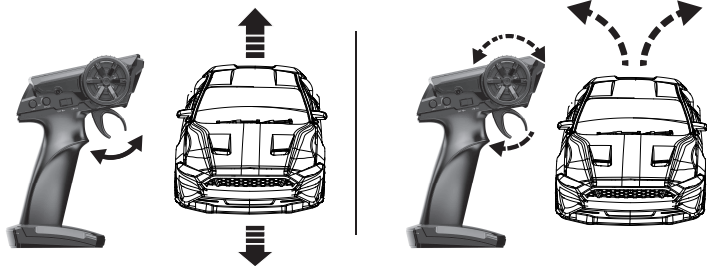


### Control methods

**Power unseal:** Move the power switch of the car and transmitter to push toward "ON" position.

**Control range:** The control range of the remote control car is about 30 meters. Please avoid to overstep this control range, otherwise the remote control car will be out of control.

**Play time:** On a full charge conditions, the remote control car could be used for about 25 minutes.



1. Pull the throttle trigger backward and the speed car will move forward. The moving speed of the speed car will be changed as the extent to which the trigger is pulled backward is changed.
2. Push the throttle trigger forward and the speed car will move backward. The moving speed of the speed car will be changed as the extent to which the trigger is pushed forward is changed. Pull the trigger backward while the speed car is moving backward then it will move forward.
3. Pull the trigger backward and turn the steering wheel to the left, then the speed car will turn left while moving forward.
4. Pull the trigger backward and turn the steering wheel to the right, then the speed car will turn right while moving forward.

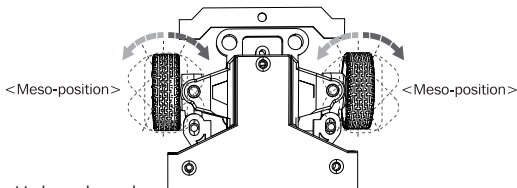
## MAXIMUM SPEED CONTROL

Turn the speed switch counterclockwise to reduce the maximum speed of the car.



Turn the speed switch clockwise to increase the maximum speed of the car.

## FINE TUNING KNOB OF STEERING



### Notice

1. Non-rechargeable batteries are not to be recharged.
2. Rechargeable batteries are only to be charged under adult supervision.
3. Not for children under 8 years.
4. Always keep parts dry.
5. Always keep all chemicals, small parts and anything electrical out of the reach of children.
6. Please do not be a bad battery, battery pack into fire or decomposition in the water to avoid accidents..
7. Never place any portion of the vehicle in your mouth as it could cause serious injury or even death.
8. Failure to do so may result in a fire causing property damage and/or personal injury. DO NOT use a NiCd or NiMH charger to charge Li-Po battery.
9. Always disconnect the battery after charging, and let the charger cool between charges.
10. Check the vehicle regularly, make sure the vehicle is in good shape.
11. When the installation or replacement of the battery. Please note polarity.
12. Speed car uses a set of 3.7V rechargeable batteries. Remote control uses 2x1.5V "AA" batteries

### Maintenance

1. Do not insolation on sun and calefaction for a long time.
2. Turn off the power of the transmitter and the remote control car when not in use.
3. Checking if all screws are loose or not.
4. Apply lubricating oil to all the moving parts.
5. Wipe off the duct and oil.
6. Take out the battery form the controller.
7. Remove the batteries on the battery seat when you do not use the car.

### DRIVING TIPS:

1. Do not drive on grass, drift, sand or drive through water.
2. Do not drive the RC vehicle in poor weather conditions.
3. Do not crash the RC vehicle into hard objects.
4. Switch off the power to the transmitter and vehicle when not in use.
5. Keep fingers, hair and loose clothing away from the wheels.
6. To get the best range from the transmitter, operate the RC in an open area.

## BATTERY TIPS:

1. Alkaline batteries are recommended to use in the transmitter.
2. Only batteries of the same or equivalent type as recommended are to be used.
3. Do not mix alkaline, standard or rechargeable batteries.
4. Do not mix old and new batteries or different types of batteries.
5. Do not recharge non rechargeable batteries.
6. If rechargeable batteries are used, only charge them under adult supervision.
7. Rechargeable batteries are to be removed from the vehicle before they are charged.
8. Be sure to insert the batteries with the correct polarities and always follow the battery manufacturer's instructions.
9. Remove all batteries from the vehicle and transmitter when not in use.
10. Remove exhausted batteries from the product.
11. Do not short circuit the supply terminals.
12. Dispose of batteries properly. Do not dispose of batteries in fire - it may cause the battery to explode or leak causing injury or damage.
13. Battery change must be only made by adults.

## WARNING:

1. Do not disassemble the RC vehicle or transmitter.
2. Make sure the batteries are installed with the correct polarity (+/-) as shown inside the battery compartment.

## TROUBLE SHOOTING

PROBLEM	CAUSE	CORRECTION
RC Vehicle is unresponsive.	Low battery level Batteries are inserted incorrectly  The wheels are obstructed by foreign objects  Vehicle is out of range from transmitter	Replace with new batteries Insert the batteries with the correct polarities as shown on the battery compartment. Remove foreign objects from the wheels  Move closer to the vehicle
Vehicle drives slow/ poor turning.	Low battery level The wheels are obstructed by foreign objects	Replace with new batteries Remove foreign objects from the wheels
Poor remote control range	Low battery level	Replace with new batteries
RC Vehicle does not drift.	Grip tires are installed on the Vehicle. RC Vehicle is driving on a non-slick surface.	Install drift tires. Drive the RC Vehicle on hard wood floor or tile or some kind of slick surface.

SPECIFICATIONS, COLORS AND CONTENT  
MAY VARY FROM ILLUSTRATIONS

MADE IN CHINA



**WARNING:**

**CHOKING HAZARD—Small parts.**  
Not for children under 3 years.

**FCC Warning:**

This equipment has been tested and found to comply with the limits for a Class B digital device, pursuant to part 15 of the FCC Rules. These limits are designed to provide reasonable protection against harmful interference in a residential installation. This equipment generates, uses and can radiate radio frequency energy and, if not installed and used in accordance with the instructions, may cause harmful interference to radio communications. However, there is no guarantee that interference will not occur in a particular installation. If this equipment does cause harmful interference to radio or television reception, which can be determined by turning the equipment off and on, the user is encouraged to try to correct the interference by one or more of the following measures:

- Reorient or relocate the receiving antenna.
- Increase the separation between the equipment and receiver.
- Connect the equipment into an outlet on a circuit different from that to which the receiver is connected.
- Consult the dealer or an experienced radio/TV technician for help.

**Caution:** Any changes or modifications to this device not explicitly approved by manufacturer could void your authority to operate this equipment.

This device complies with part 15 of the FCC Rules. Operation is subject to the following two conditions:

(1) This device may not cause harmful interference, and (2) this device must accept any interference received, including interference that may cause undesired operation.

This equipment complies with FCC radiation exposure limits set forth for an uncontrolled environment. This equipment should be installed and operated with minimum distance 0cm between the radiator and your body.