



# **GS805 Installation Operation and Maintenance Manual**

**Wuhan Gao Sheng Wei Ye  
Technology Co., Ltd**

**TEL : +86 02788771752**

**2021.08.25**



# Machine parameters

item	parameter
Overall size	1810x760x750mm
Machine weight	145KG
Supply voltage	Match local grid power supply requirements
Overall power	Maximum power 2200W
heating power	1600W
Screen size	27 "1920x1080P HD screen
Interaction mode	Multi-point screen integrated capacitive touch
Android Configuration	四核2.0GHz 2G RAM Mali-G52 GPU
network connections	WIFI 2.4G
Cup Drop Parameters	Automatic cup dropper 14 oz 89mm calibre paper cup

Cup output parameters	Automatic track transfer cup out Minimum production time: 50s Maximum production time: 90s
Material parameters	Powder capacity 7x 4.5L powder material Paper cup capacity: 60 pieces Barreled water capacity 2-3 barrels (18.9L)
Equipment limit parameters	Operating temperature range 5-35 degrees Maximum daily cup output 500 cups
Average power consumption per day	4-8 degrees

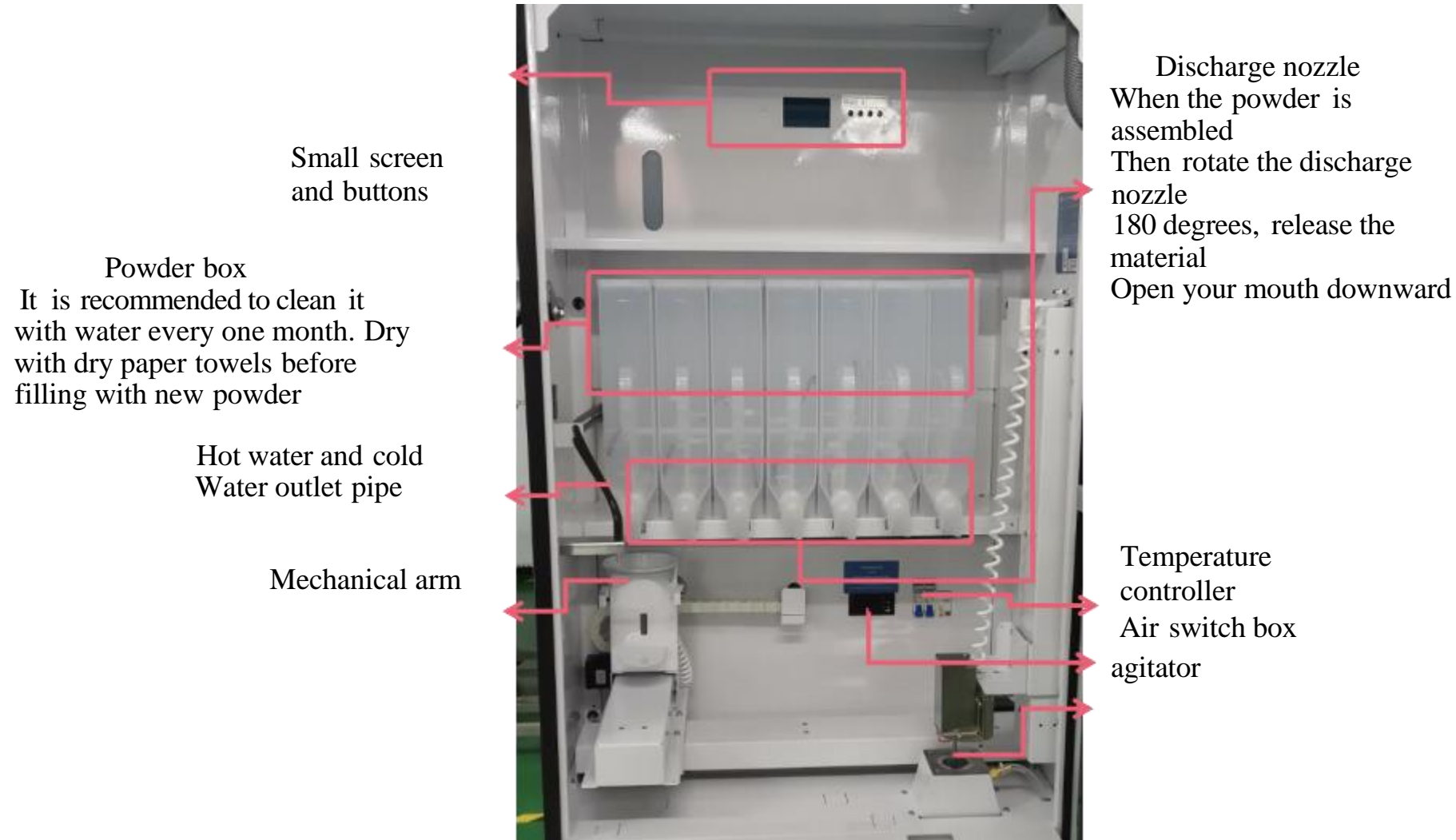
# 1、Equipment installation requirements

- 1、The equipment needs to be installed on a flat, solid ground
- 2、Installation environment requirements
  - Power requirements : A power supply with a ground wire that meets the standard
    - requires that the zero-ground voltage be less than 3V
  - Space requirement : The minimum distance between the back cover of the equipment
    - and the wall or cabinet must be greater than 30cm, and the minimum
    - distance between the right side of the equipment and the wall or
    - cabinet should be able to fully open the front door.
  - network requirements : Support 2.4Ghz wifi signal, not support 5Ghz wifi signal
  - Temperature requirements: please drain the water in the equipment and turn off the machine
    - when it is below 0 degrees Celsius
  - Water supply requirements : Must be pure water, tap water must not be used

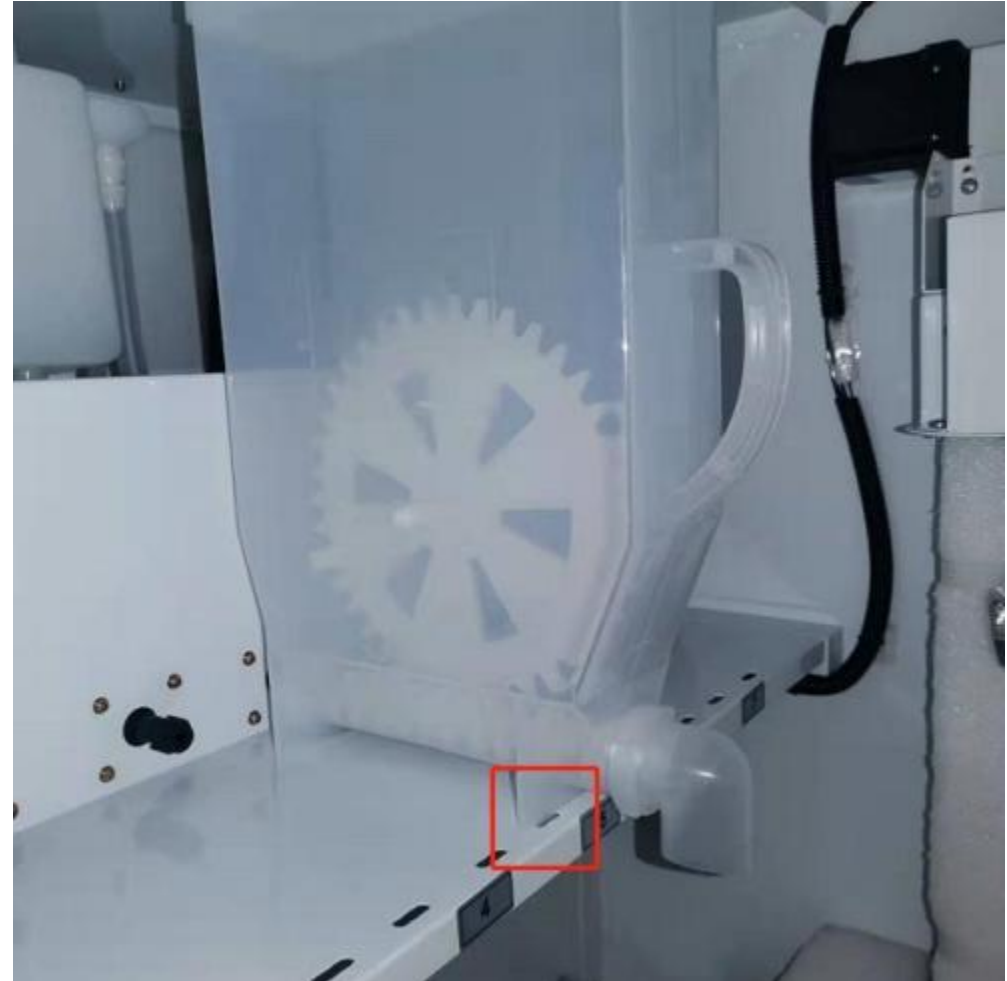
## 2、Material installation and requirements

- 1、 Open the material carton and check the material list
- 2、 Refer to the following pictures and texts to install the material components in the corresponding position
- 3、 Add the corresponding raw materials to the material box
- 4、 After the powder is assembled, rotate the discharge nozzle 180 degrees so that the discharge nozzle opening faces down

## 2.1.1、Structure introduction



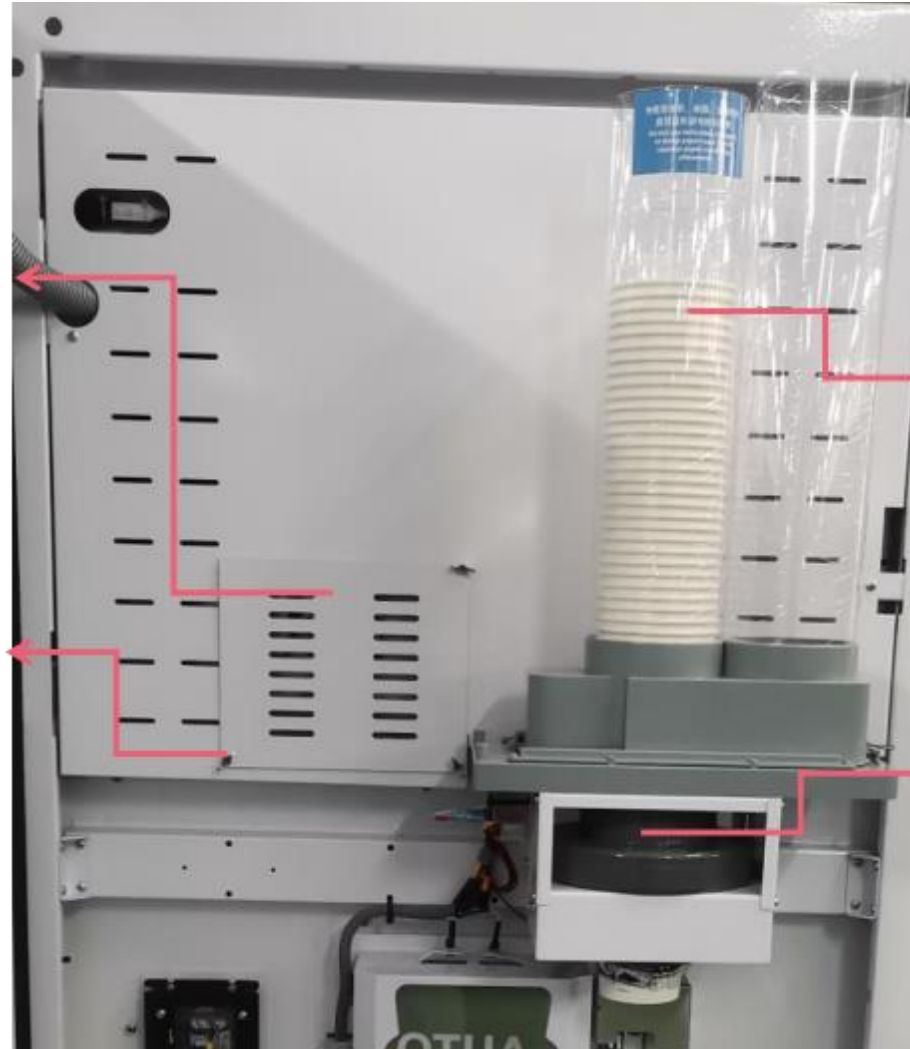
## 2.2.1、Install powder box



## 2.2.2、Structure introduction

Protective cover

butterfly nut



Note: The paper cup must be loose to prevent the cup from sticking

Buckets and paper cups

Paper cup dispense

## 2.2.3.1、Water source connection mode ( Water source connection select one )



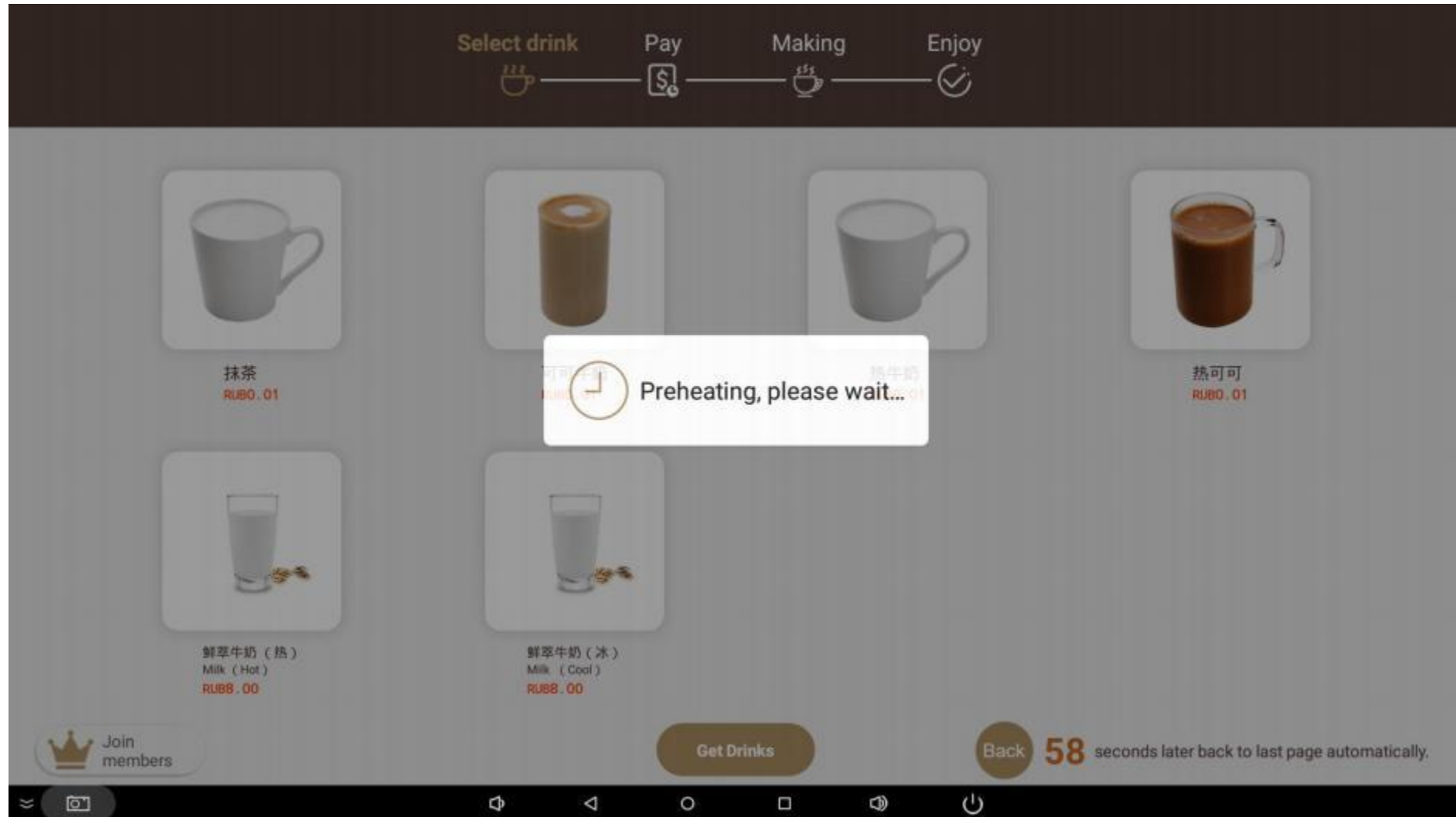
## 2.2.3.2、Barreled water supply ( Water source connection select one )



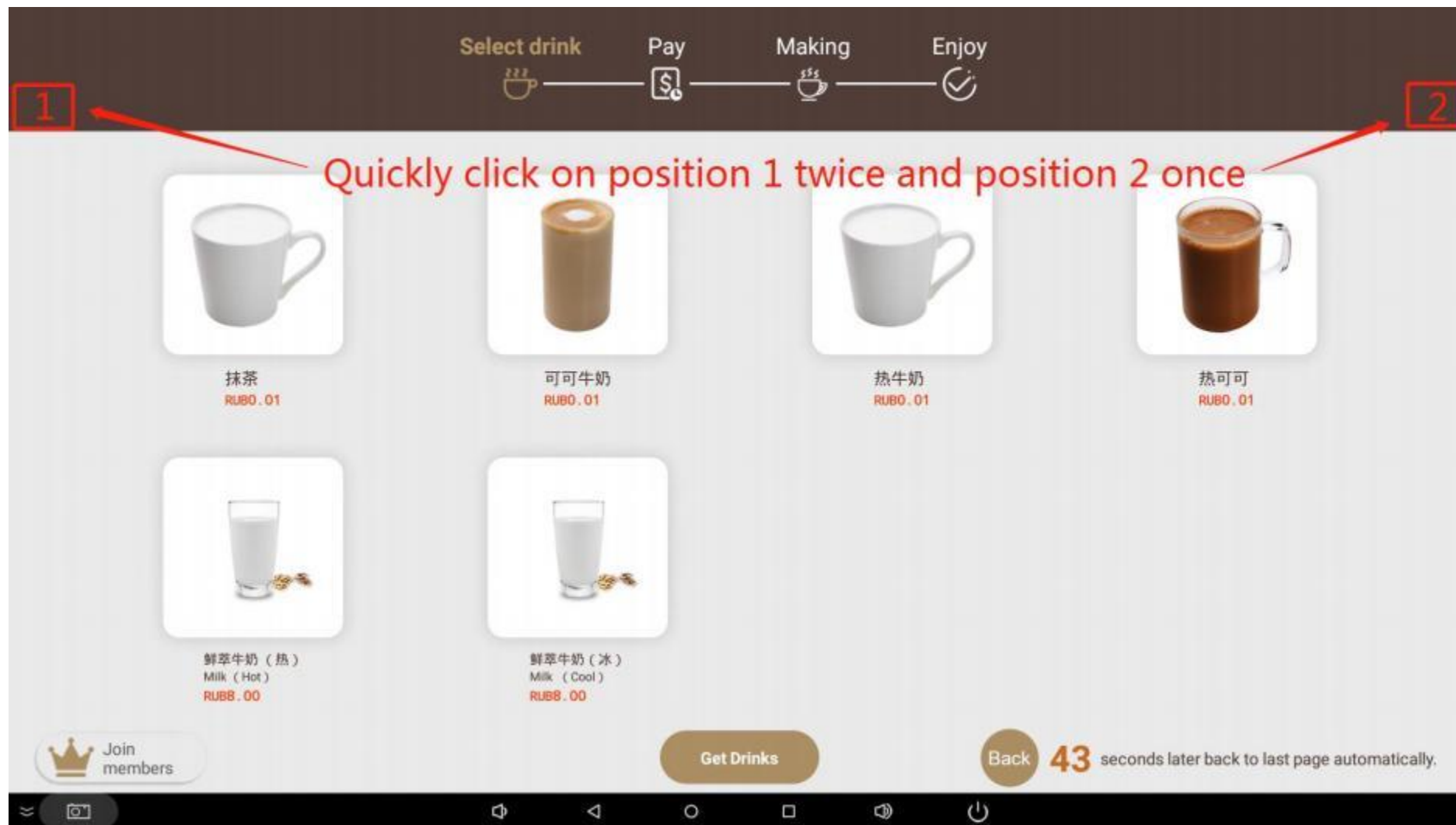
## 3、Operating interface

- 1、Switch accounts
- 2、Related Settings and records
- 3、Order introduction

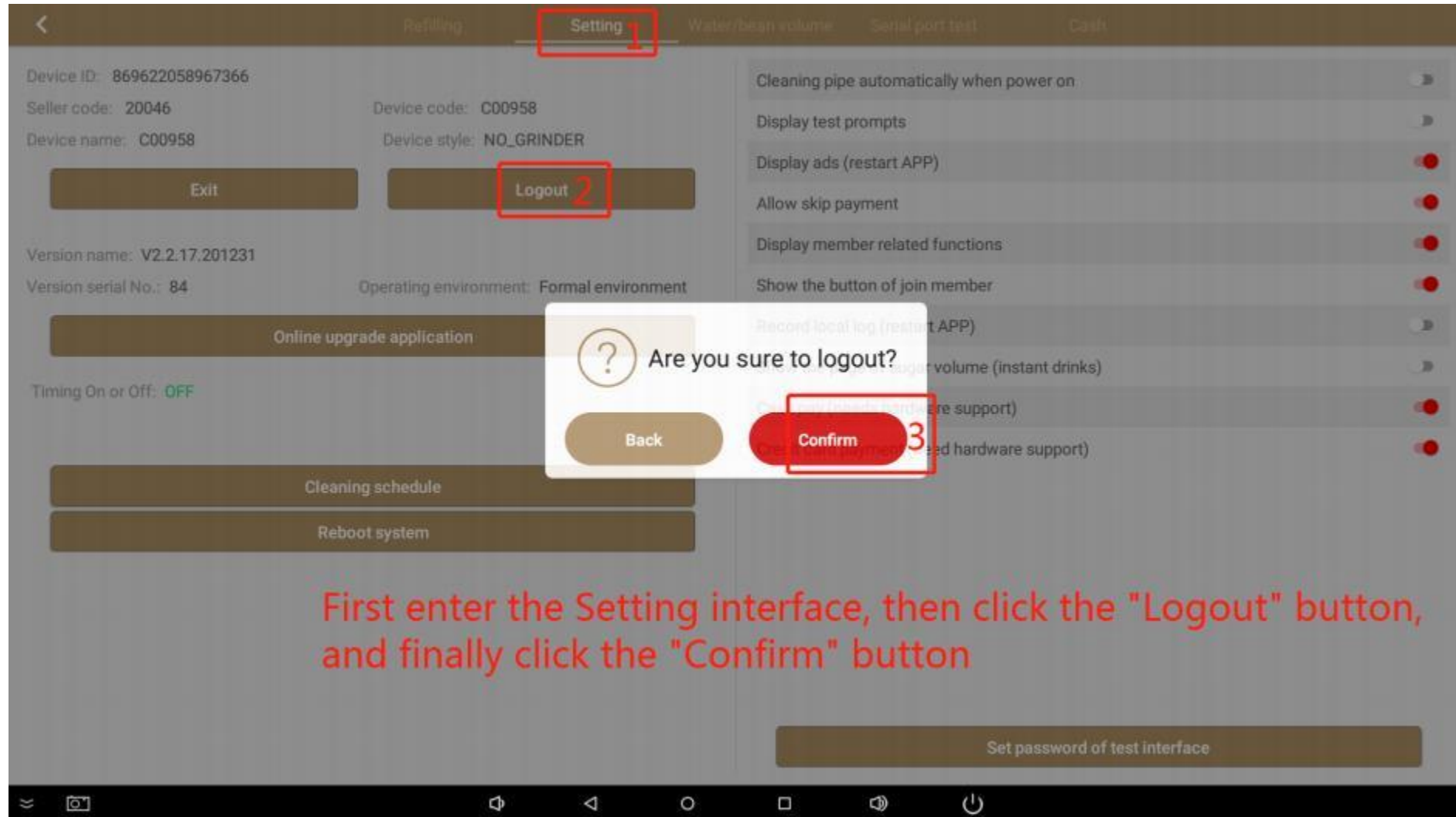
### 3.1.1、The water in the water tank is heated



## 3.1.2.1、Switch login account



## 3.1.2.2、Switch login account



## 3.1.2.3、Switch login account

The screenshot shows a login screen with a header bar containing a back arrow, a 'Login' button, and the text 'Formal environment V2.2.17.201231'. Below the header, the 'Device ID: 869622058967366' and 'Sim serial No.: 89860420011973395351' are displayed. The main area contains a text input field with '20046' and a 'Please enter password' label. A red box highlights the serial port information: 'Serial port of instant: /dev/ttyS3', 'Serial port of grinder: /dev/ttyS2', and 'Serial port of pay: /dev/ttyS0'. On the right, there are three 'Setting' buttons and a right arrow button. Red annotations with arrows indicate the following steps: 1. 'Please take a picture of the serial port number and save it' (pointing to the serial port box), 2. 'Please enter your account' (pointing to the '20046' input), 3. 'Please enter your own password' (pointing to the password label), and 4. 'Click to log in' (pointing to the right arrow button).

Device ID: 869622058967366 Sim serial No.: 89860420011973395351

20046

Please enter password

Serial port of instant: /dev/ttyS3  
Serial port of grinder: /dev/ttyS2  
Serial port of pay: /dev/ttyS0

Setting  
Setting  
Setting

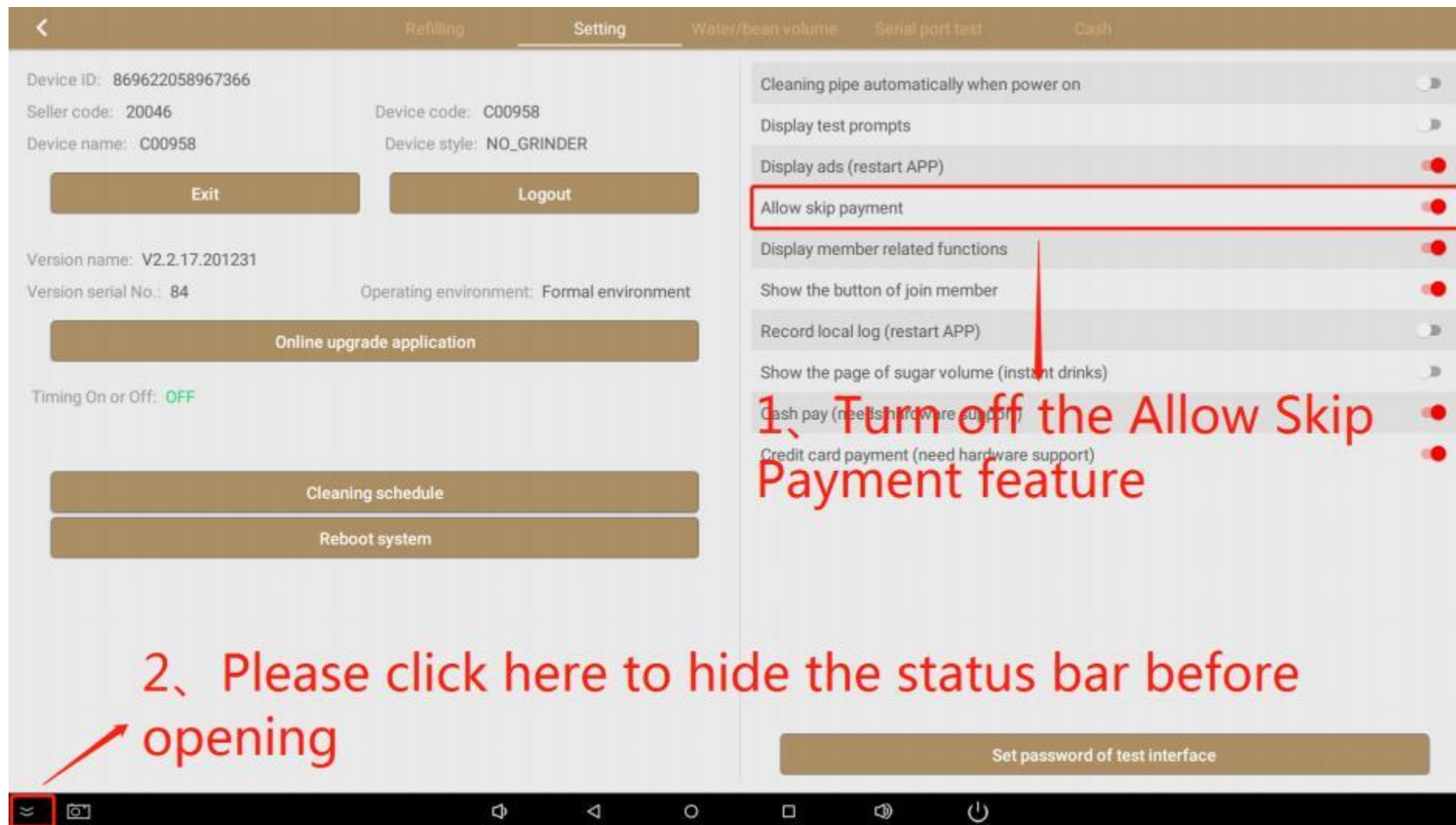
1、Please take a picture of the serial port number and save it

2、Please enter your account

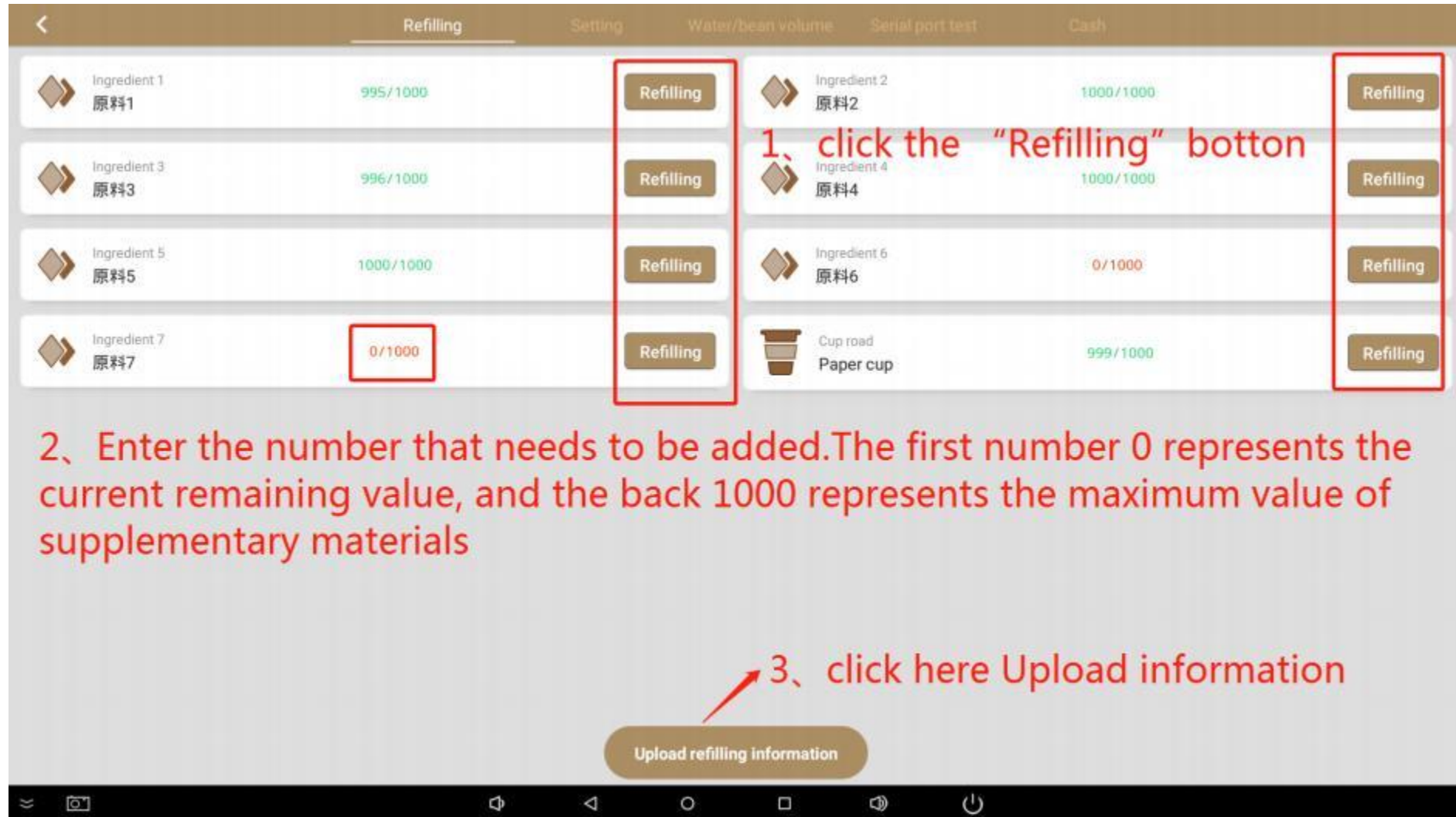
3、Please enter your own password

4、Click to log in

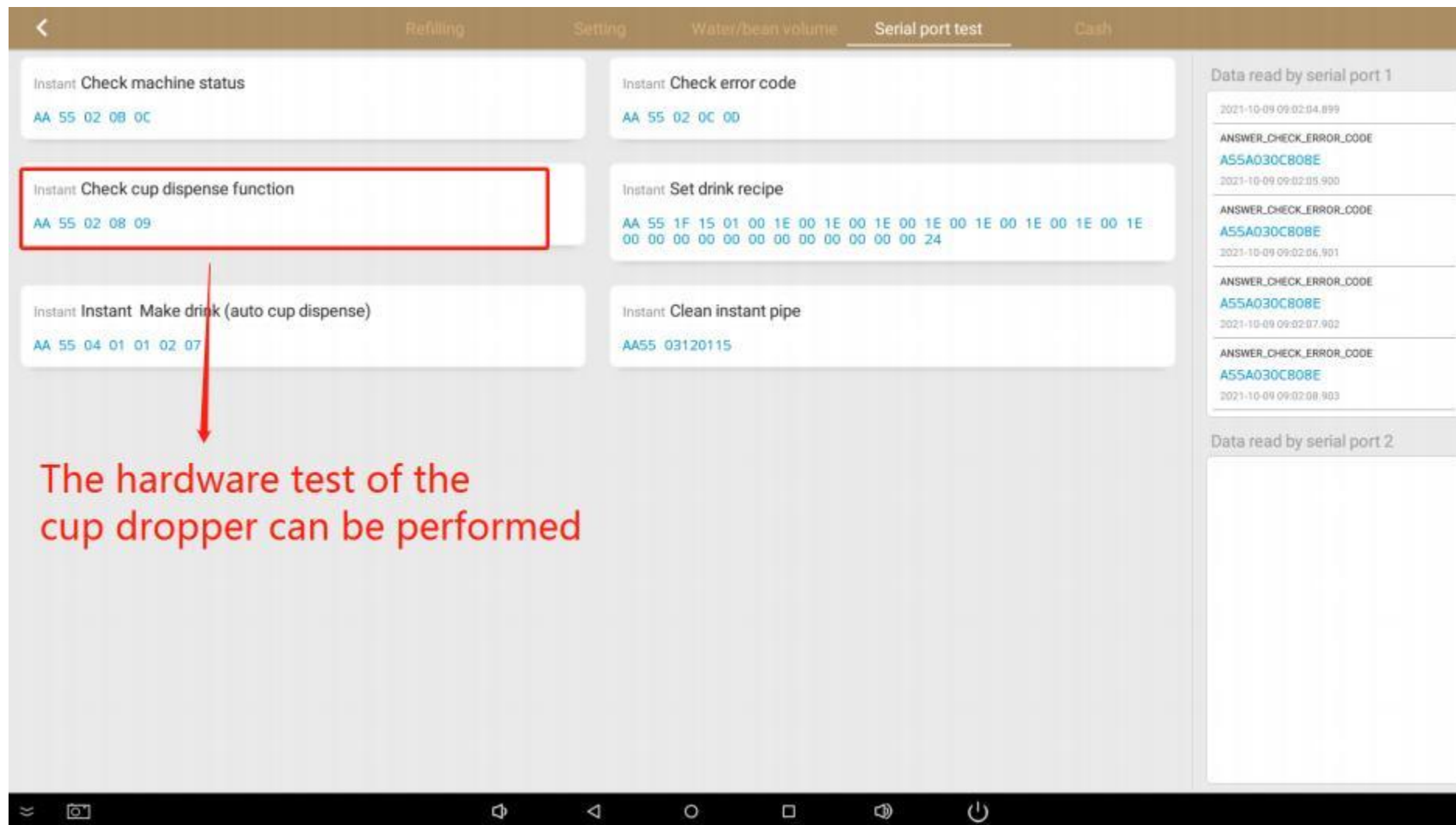
## 3.2.1、Function setting



## 3.2.2、Material quantity supplement setting



### 3.2.3、Serial test



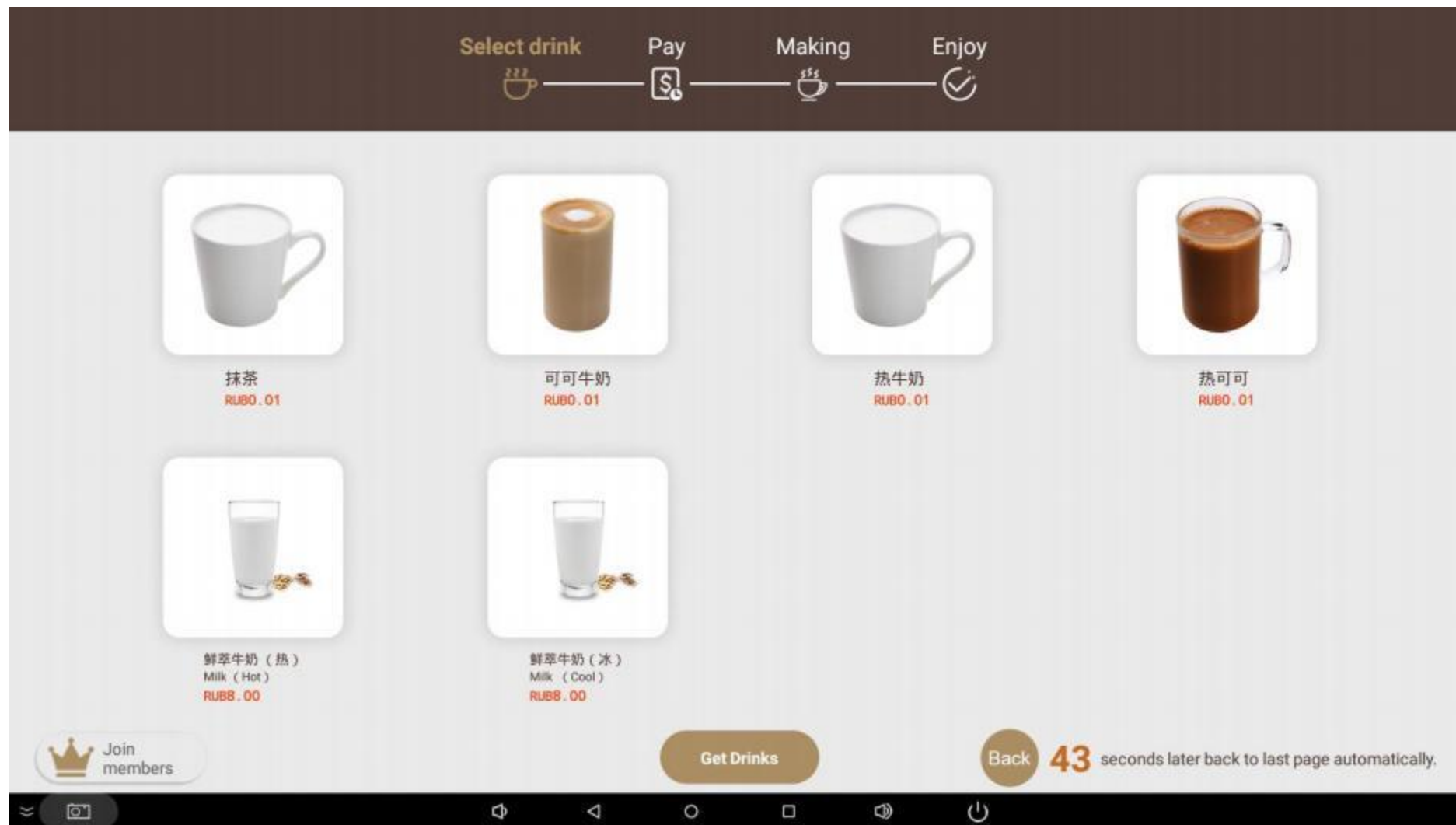
## 3.2.4、The Cash interface needs to be taken and saved

The screenshot displays the 'Cash' settings screen within the Coffeeji application. The top navigation bar includes a back arrow and five tabs: 'Refilling', 'Setting', 'Water/bean volume', 'Serial port test', and 'Cash'. The 'Cash' tab is currently selected. The settings are as follows:

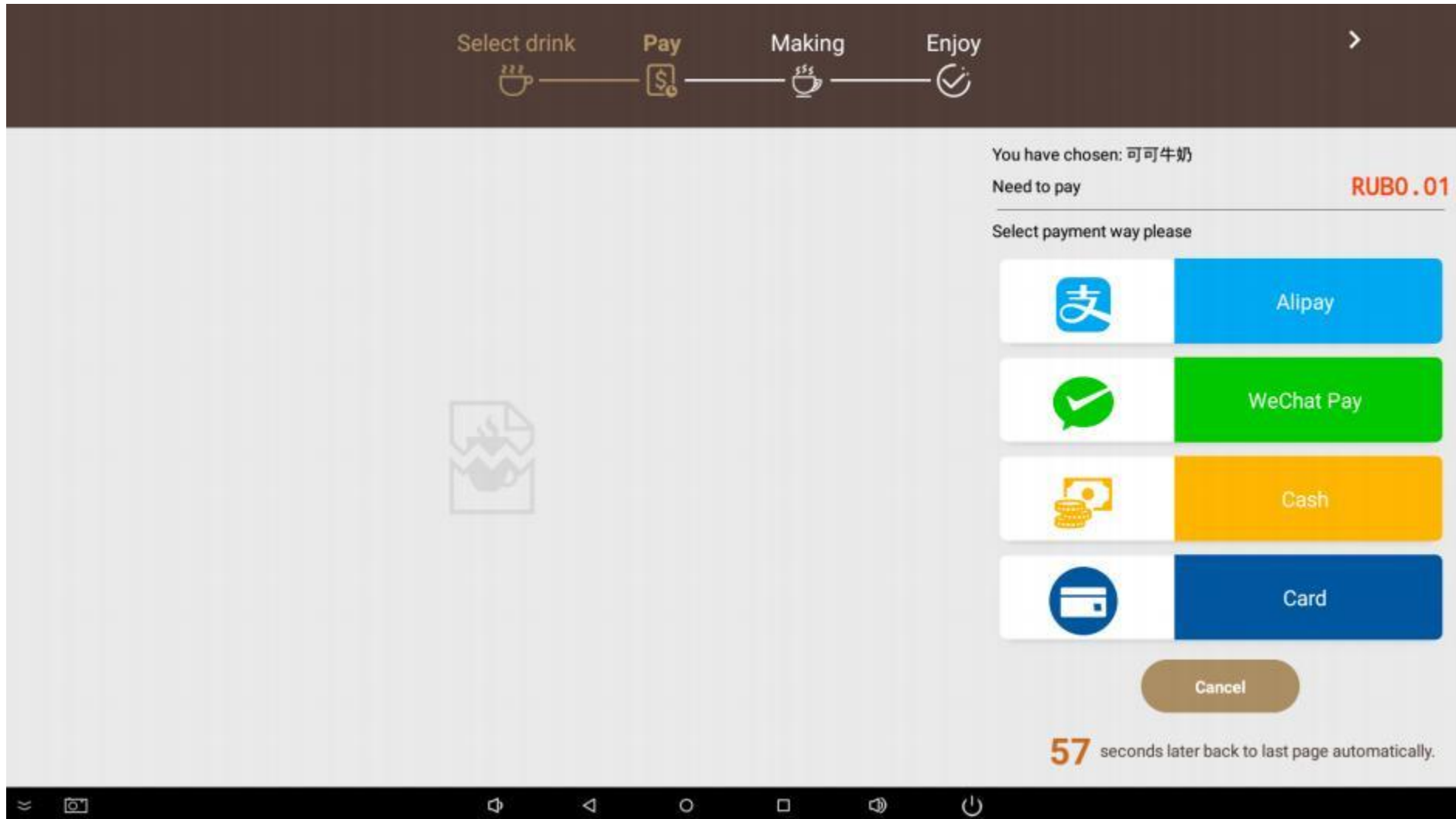
Setting	Value
Currency code (three letters)	RUB
Banknote conversion ratio between min currency value and main currencies	1
Coin conversion ratio between min currency value and main currencies	1
Value of coin change	1
Card reader conversion ratio between min currency value and main currencies	100

The bottom of the screen shows the standard Android navigation bar with icons for home, back, and power.

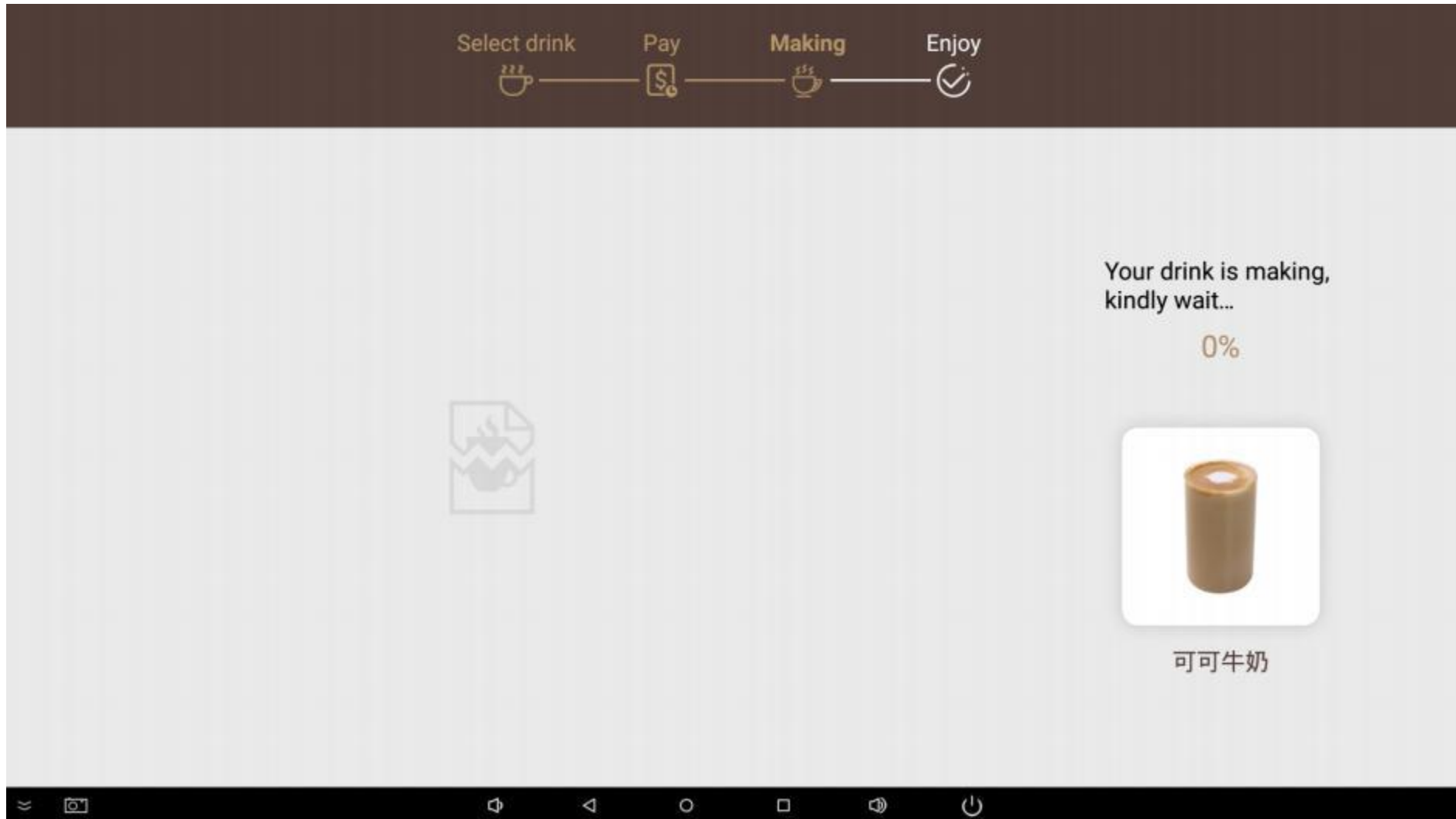
## 3.3.1、Trading interface introduction



## 3.3.2 Payment interface introduction



### 3.3.3、Drink preparation waiting interface

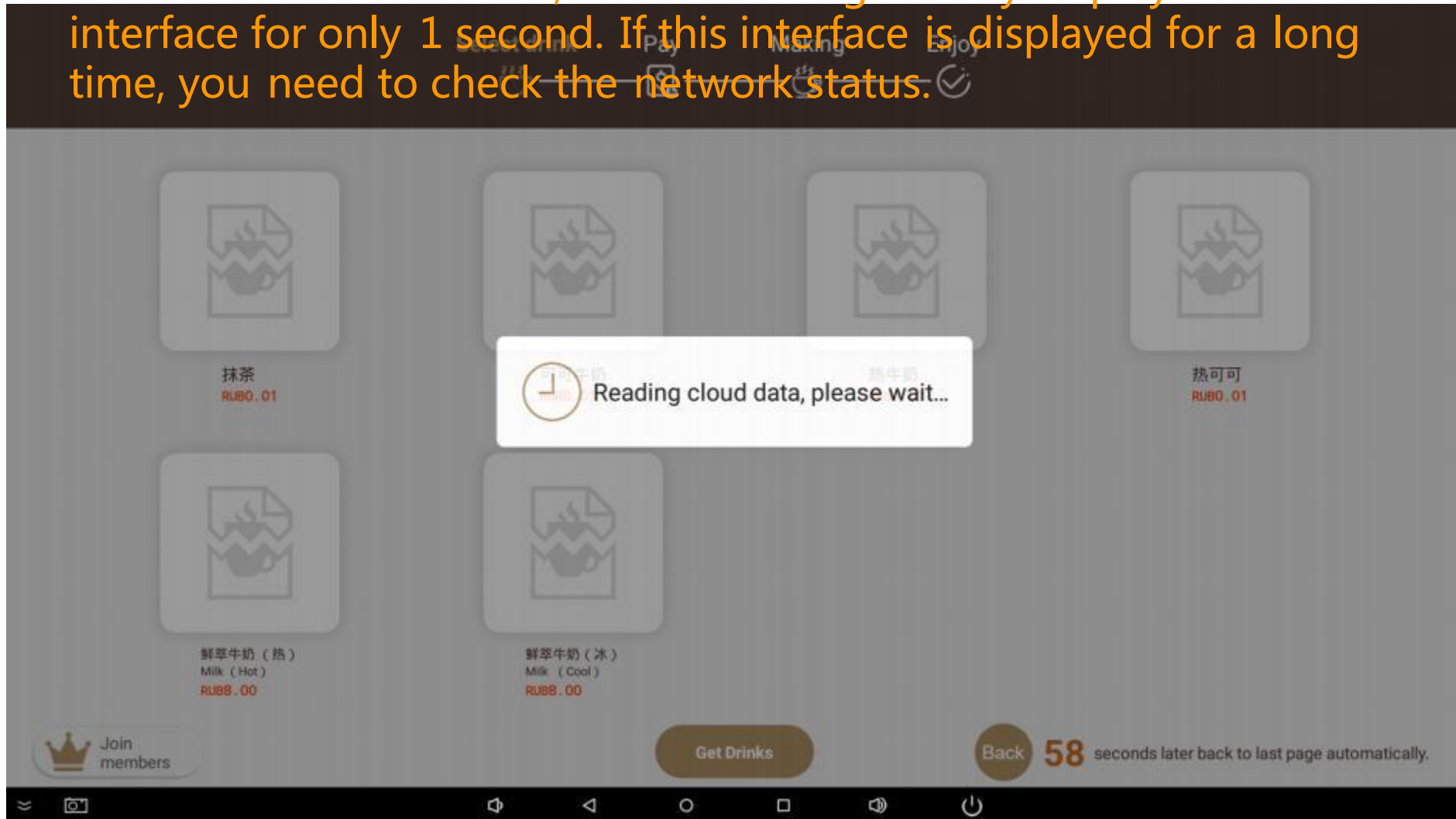


## 4、Common faults and solutions

- 1. Network failure
- 2. Insufficient material failure: E01, E02, E03 code
- 3. Report E11 code
- 4. Report E002 code
- 5. Common setup issues

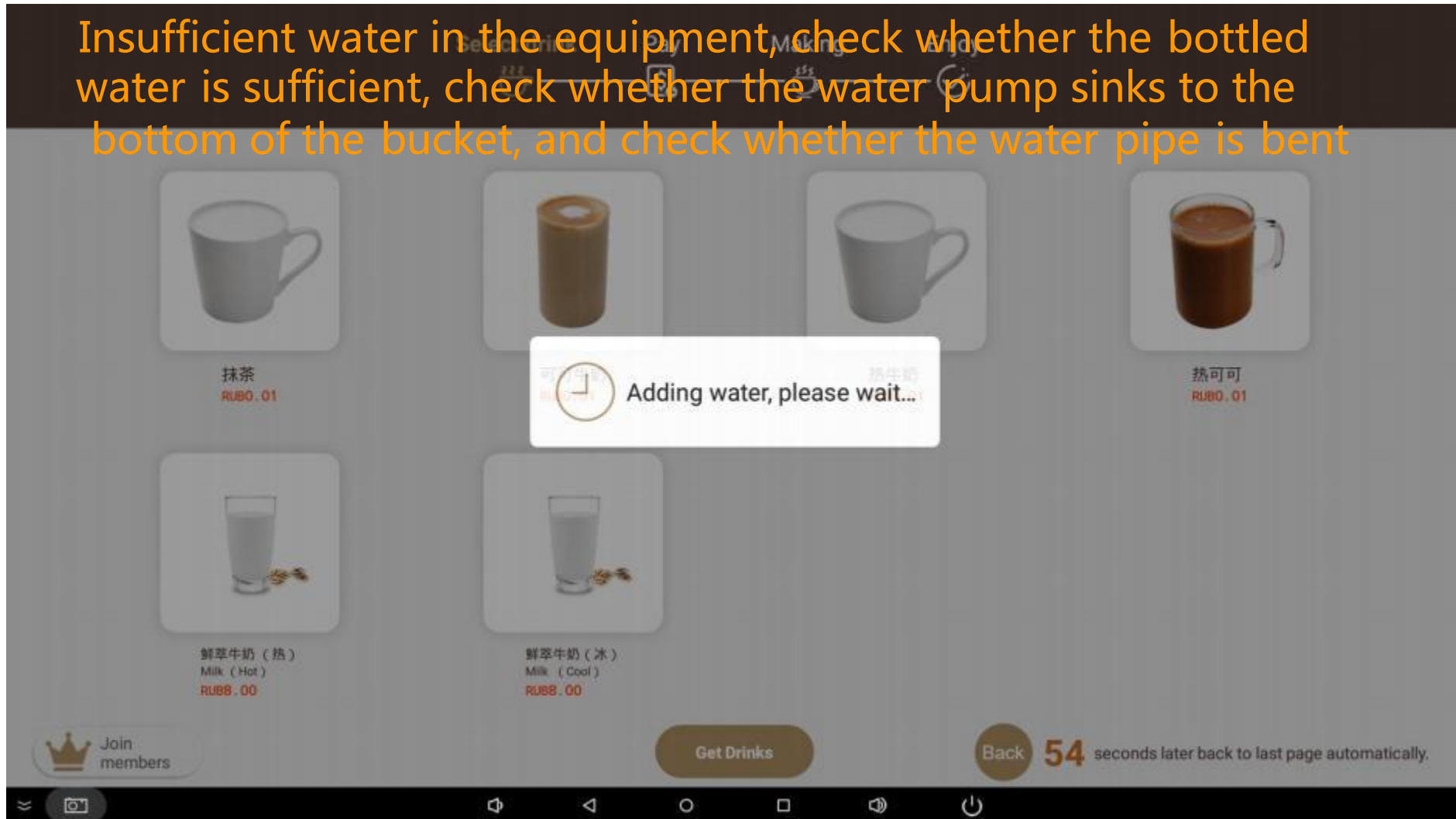
## 4.1、Network failure

Under normal conditions, this screen is generally displayed on the interface for only 1 second. If this interface is displayed for a long time, you need to check the network status.



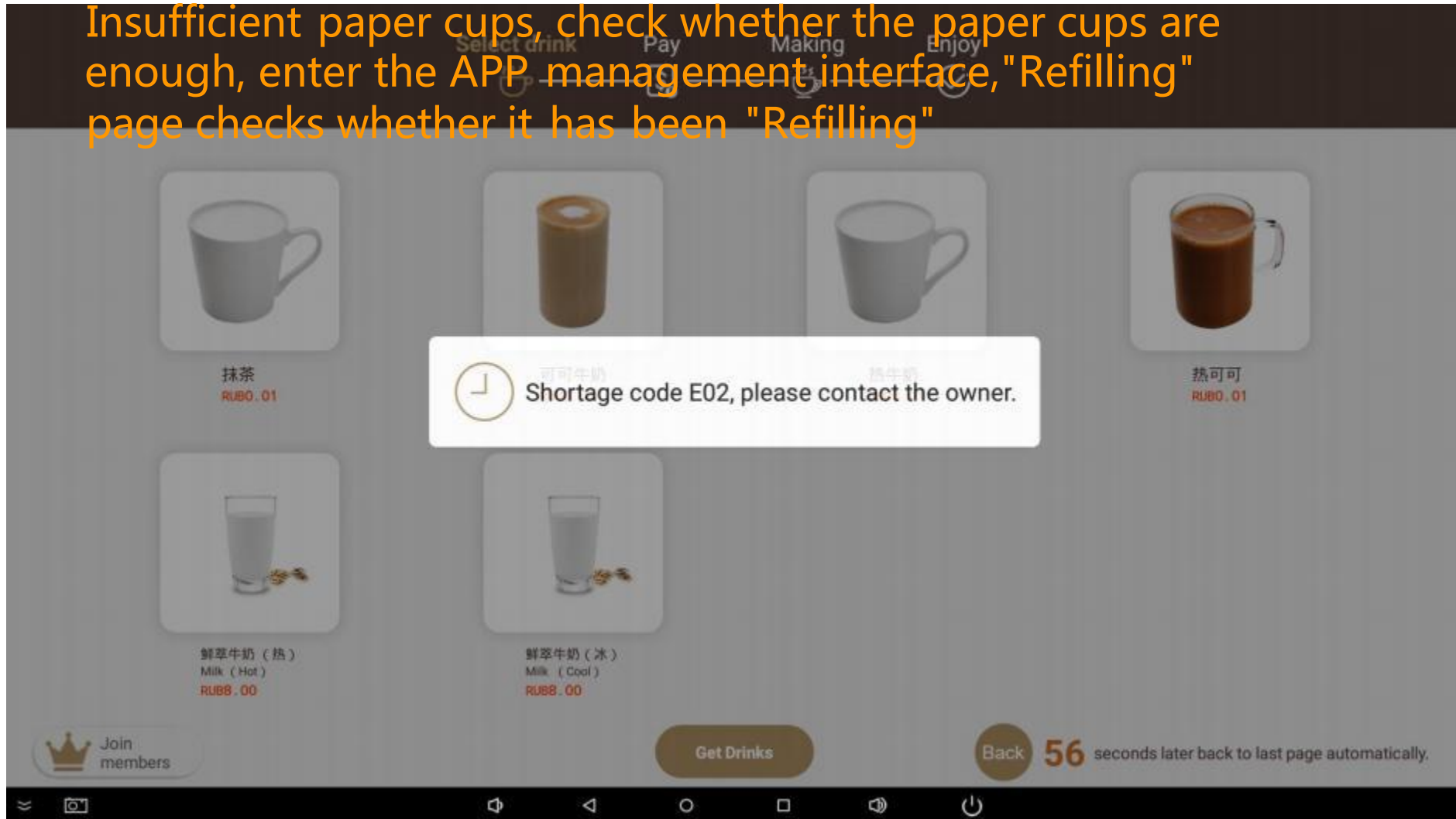
## 4.2.1、Fault code E01

Insufficient water in the equipment, check whether the bottled water is sufficient, check whether the water pump sinks to the bottom of the bucket, and check whether the water pipe is bent



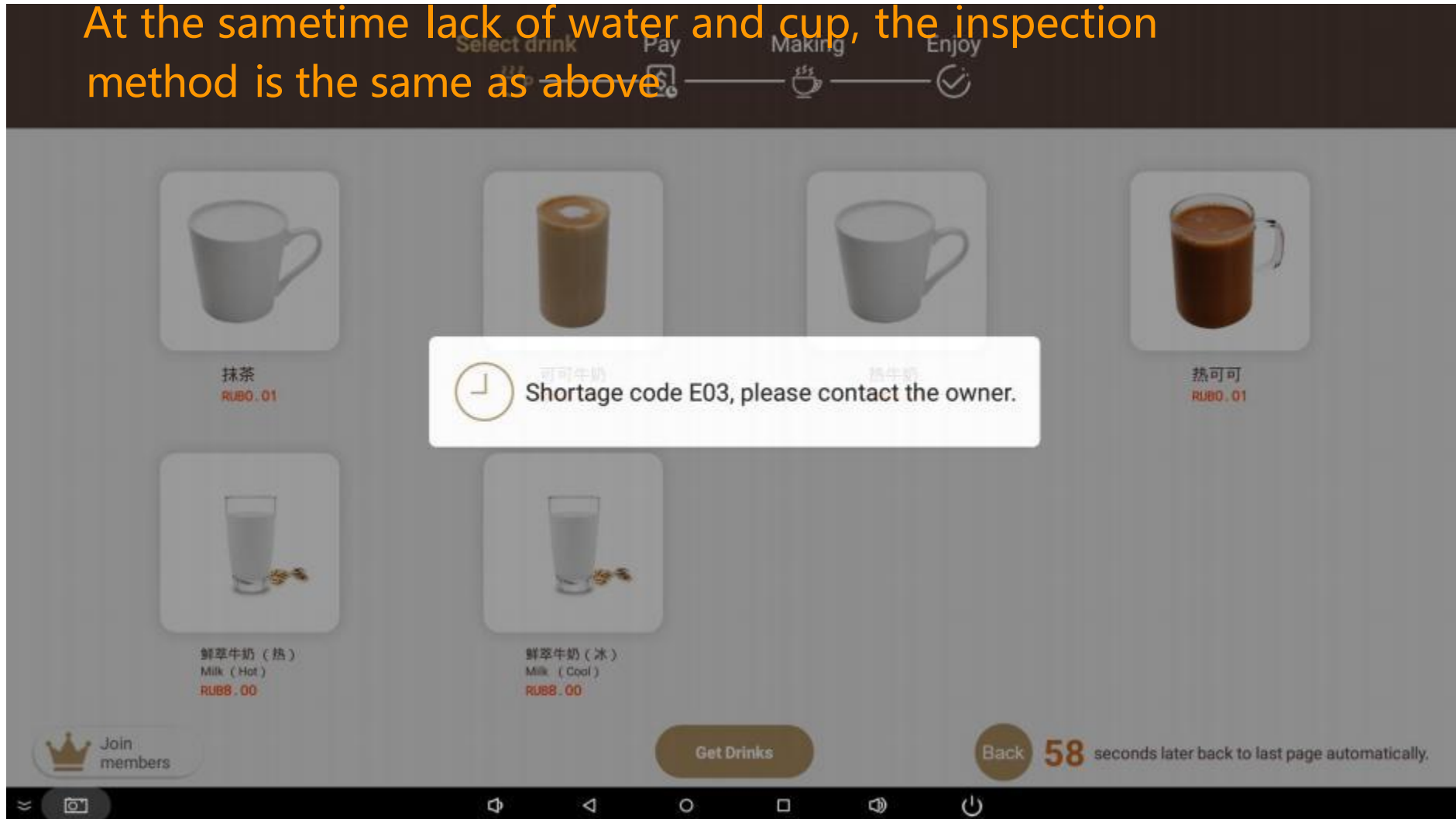
## 4.2.2、Fault code E02

Insufficient paper cups, check whether the paper cups are enough, enter the APP management interface, "Refilling" page checks whether it has been "Refilling"



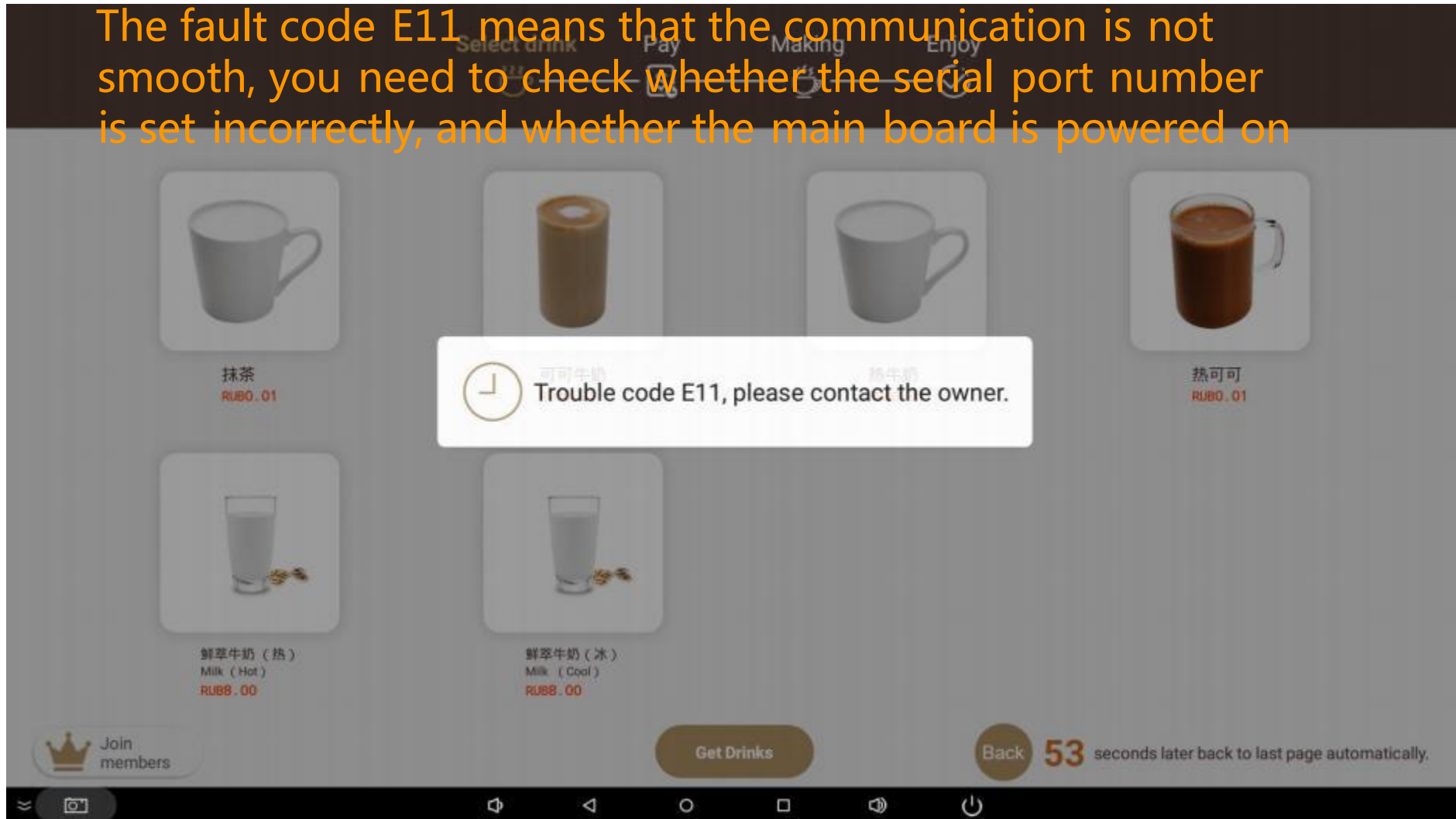
### 4.2.3、Fault code E03

At the sametime lack of water and cup, the inspection method is the same as above



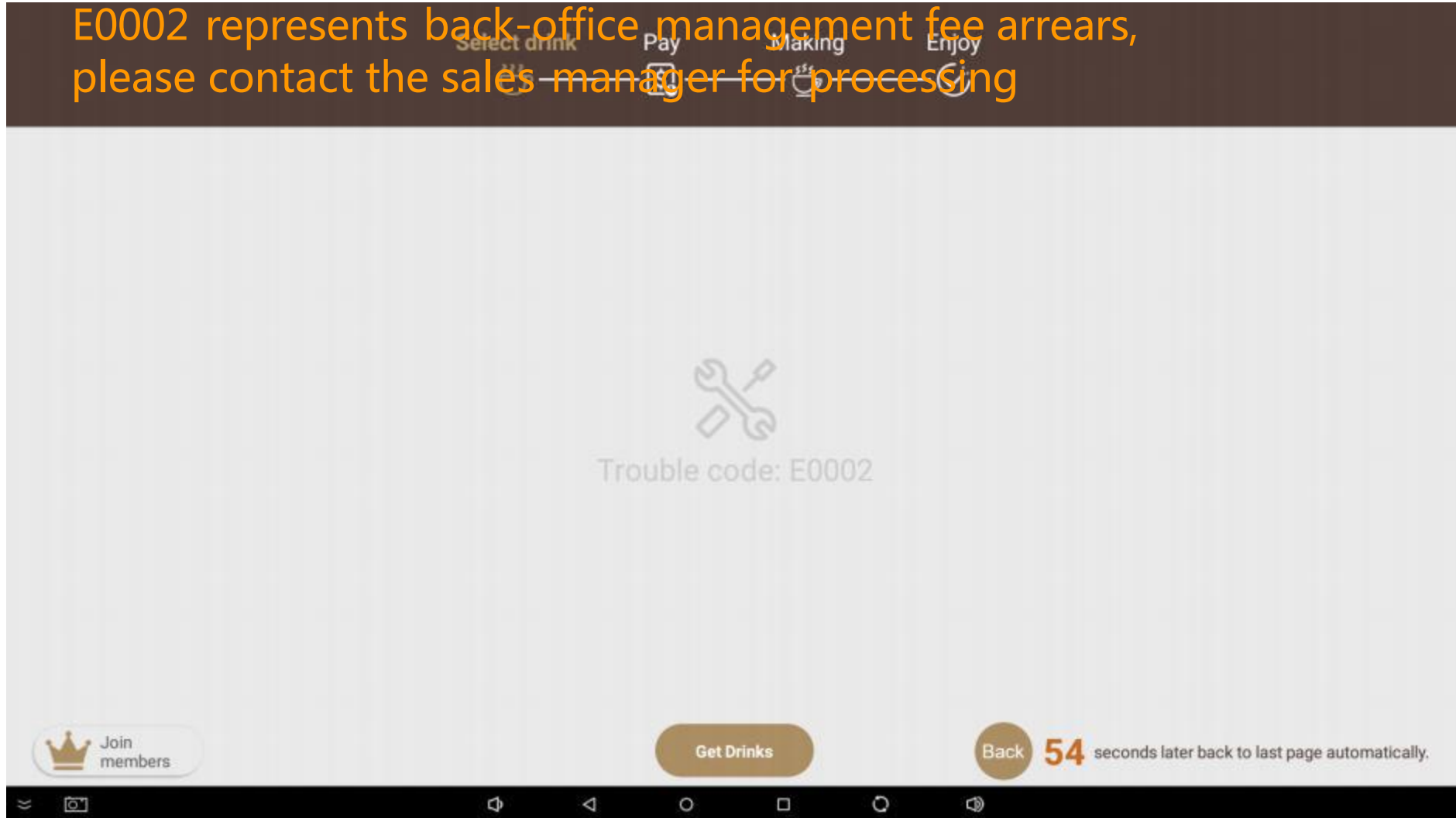
## 4.2.4、Fault code E11

The fault code E11 means that the communication is not smooth, you need to check whether the serial port number is set incorrectly, and whether the main board is powered on



## 4.2.5、Fault code E0002

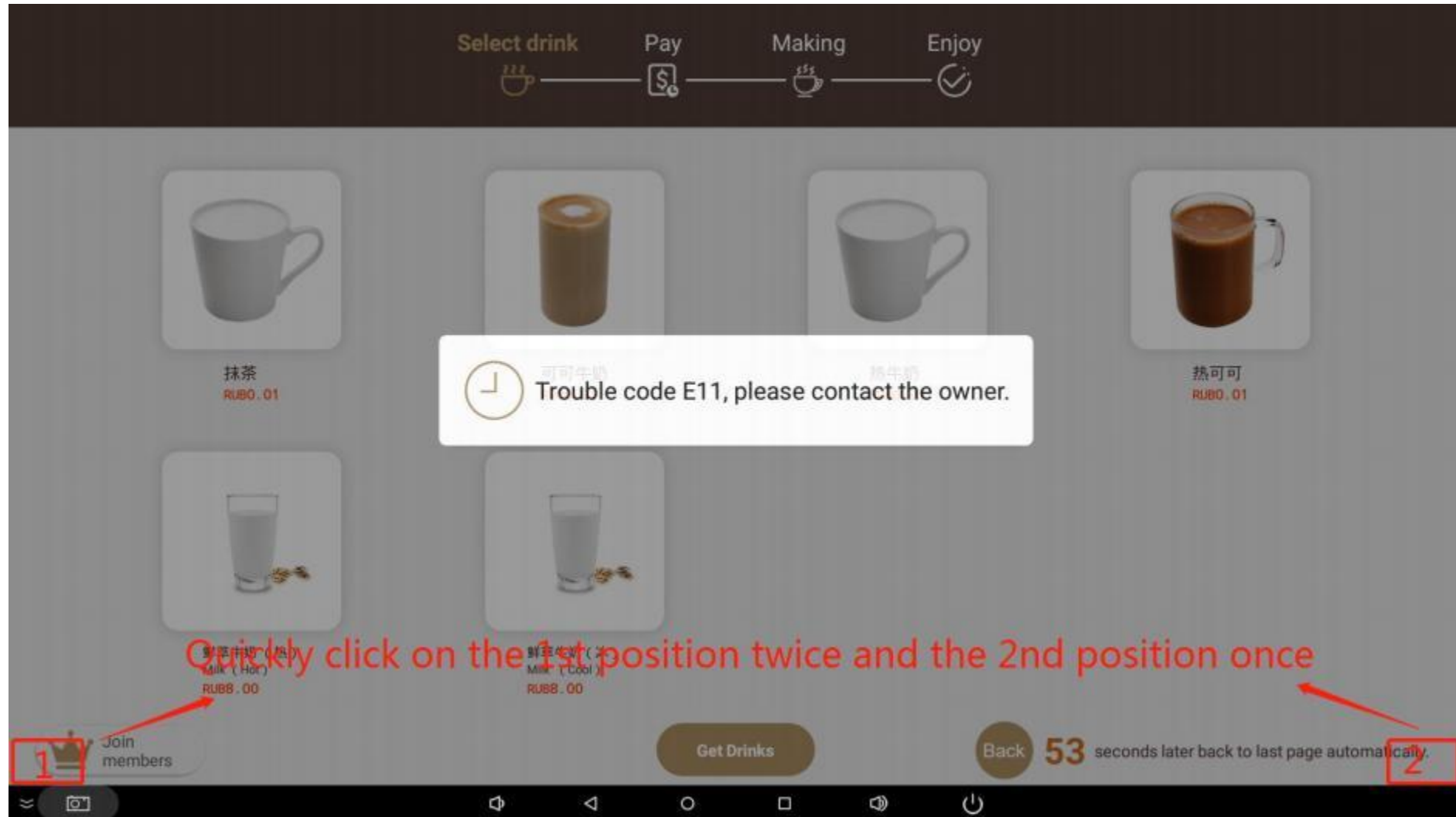
E0002 represents back-office management fee arrears,  
please contact the sales manager for processing



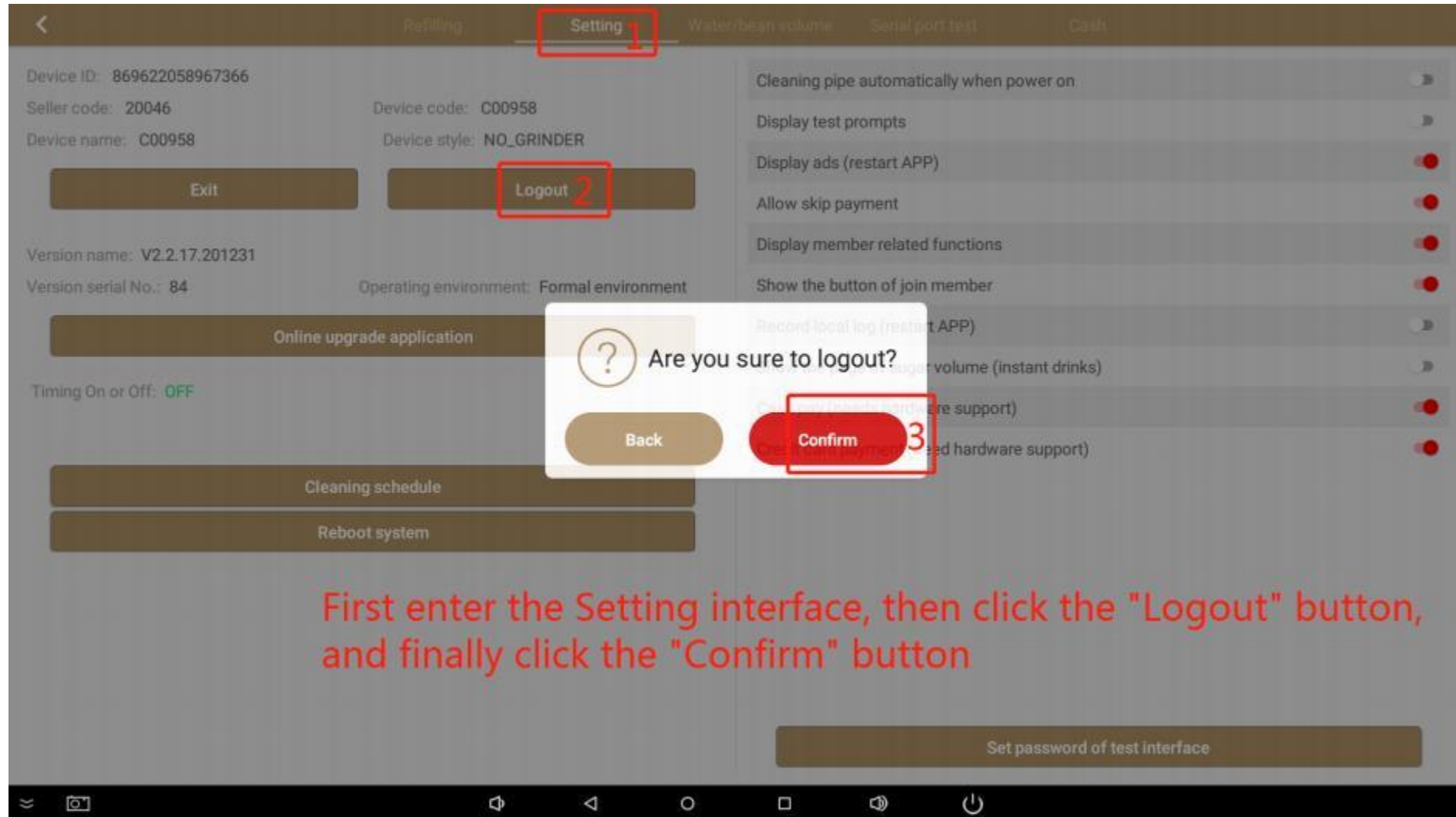
## 4.2.6、Meaning and handling methods of other fault codes

Fault Code/Description	Troubleshooting methods
E01/Equipment water shortage	Check whether the water source is sufficient and whether the water pipe is bent. After replenishing the water source, please power off and restart the machine once
E02/Equipment cup shortage	Check whether the paper cups have been consumed and replenish materials in a timely manner
E03/Equipment also lacks water and cups	Refer to E01 and E02 for handling methods
E04/Temperature fault	Check the connection status of the temperature sensor or replace the temperature sensor
E11/Instant communication failure	Check whether the serial communication cable and the main board are powered on
"Connecting to cloud data" is displayed	Please check the network status
Low/high water content in beverages	Please adjust the water quantity in "water/bean volume"
There is a peculiar smell in the machine	Please clean the waste water in the waste water bucket and clean the waste water bucket
The cup does not fall smoothly	Please check whether the paper cups are damp, deformed, or pressed too tightly between them
Warning: The power supply input terminal of the equipment must be well grounded, otherwise it may cause equipment operation failures and safety hazards!	

## 4.3.1.1、Modify serial port number



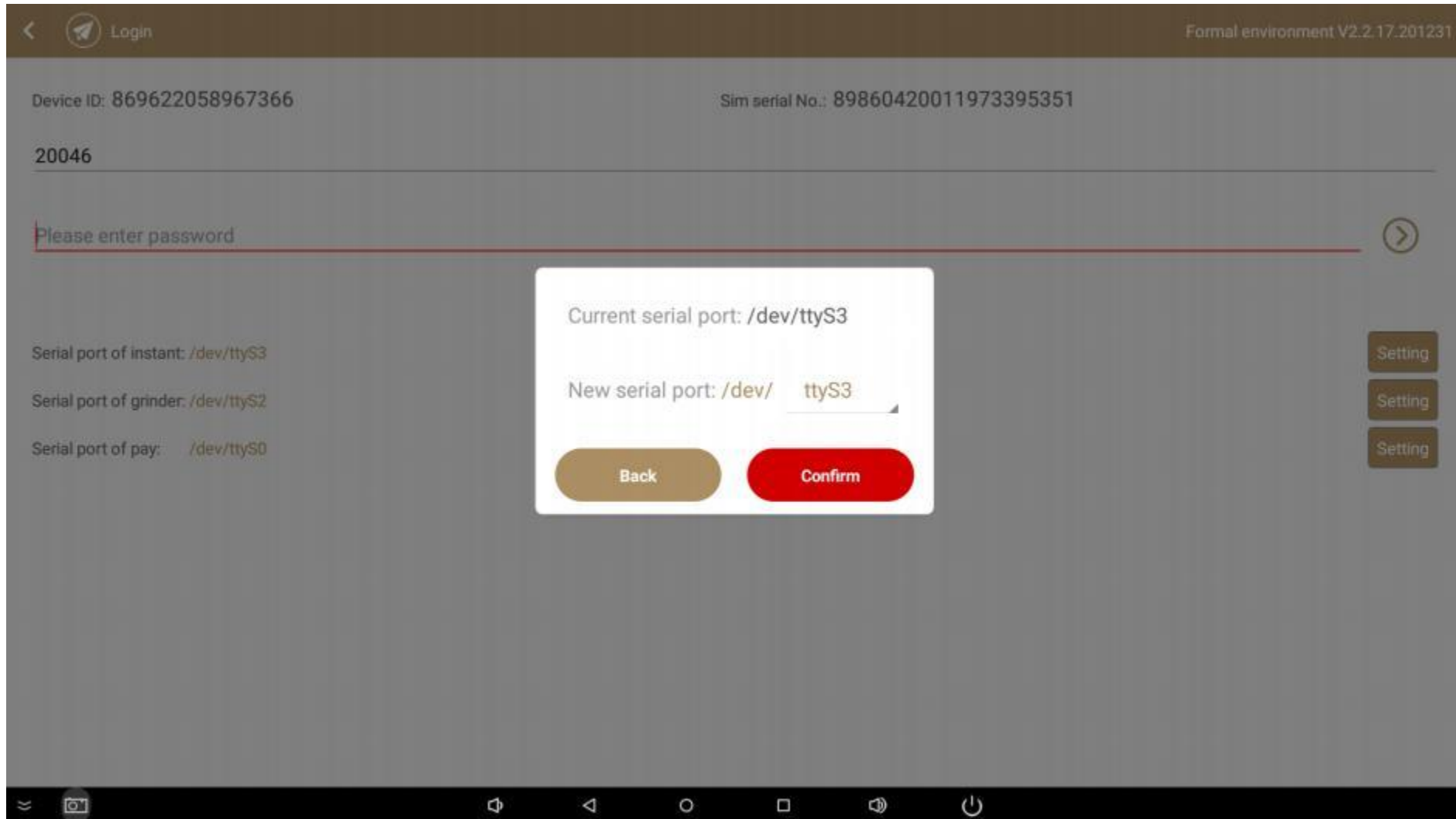
## 4.3.1.2、Modify serial port number



## 4.3.1.3、Modify serial port number



## 4.3.1.4、Modify serial port number



## 4.3.1.5、Modify serial port number

Device ID: 869622058967366 Sim serial No.: 89860420011973395351

20046

Please enter password

Serial port of instant: /dev/ttyS3  
Serial port of grinder: /dev/ttyS2  
Serial port of pay: /dev/ttyS0

Setting  
Setting  
Setting

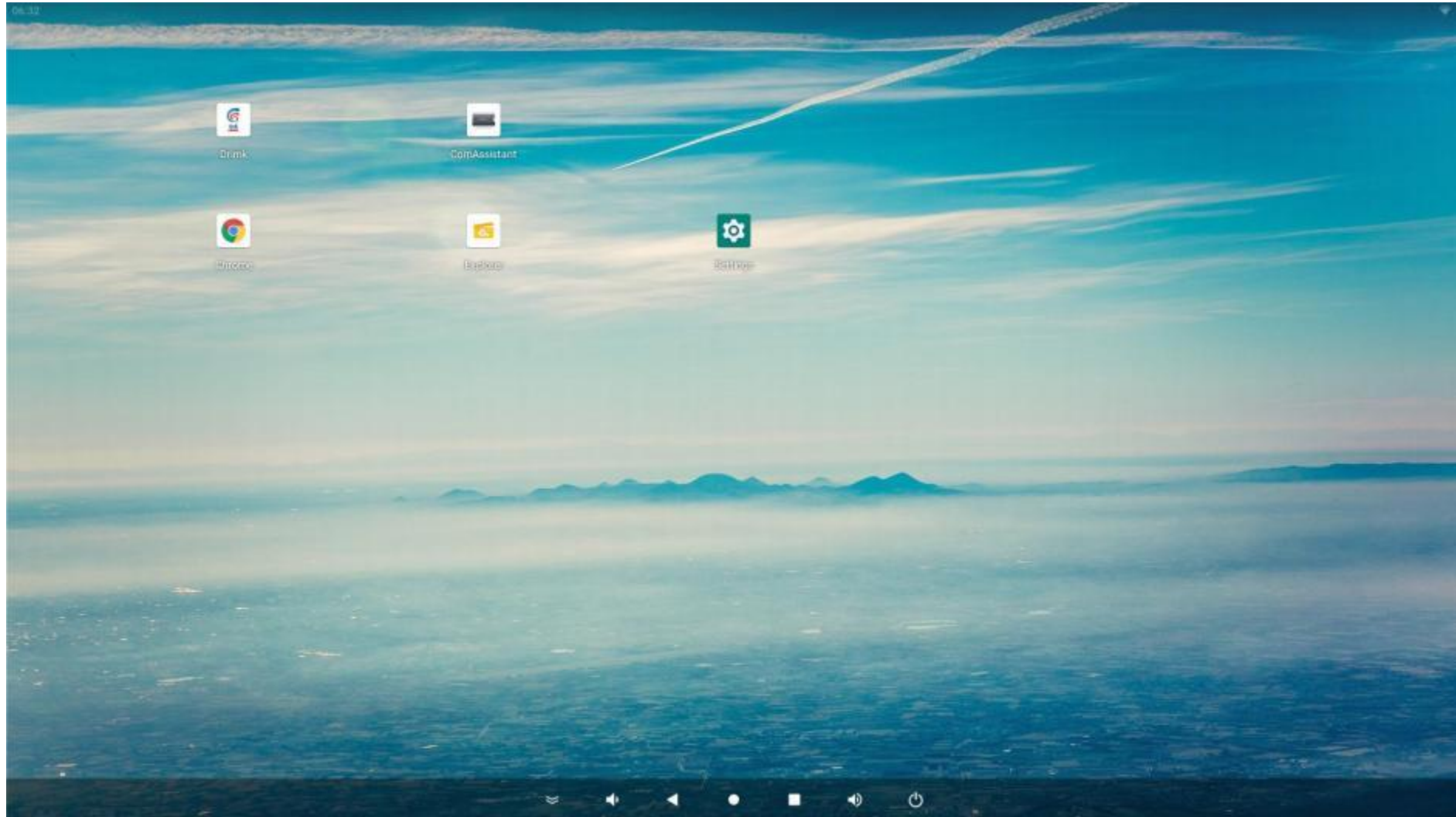
1、Please take a picture of the serial port number and save it

2、Please enter your account

3、Please enter your own password

4、Click to log in

## 4.4.1.1、Turn on the wifi function



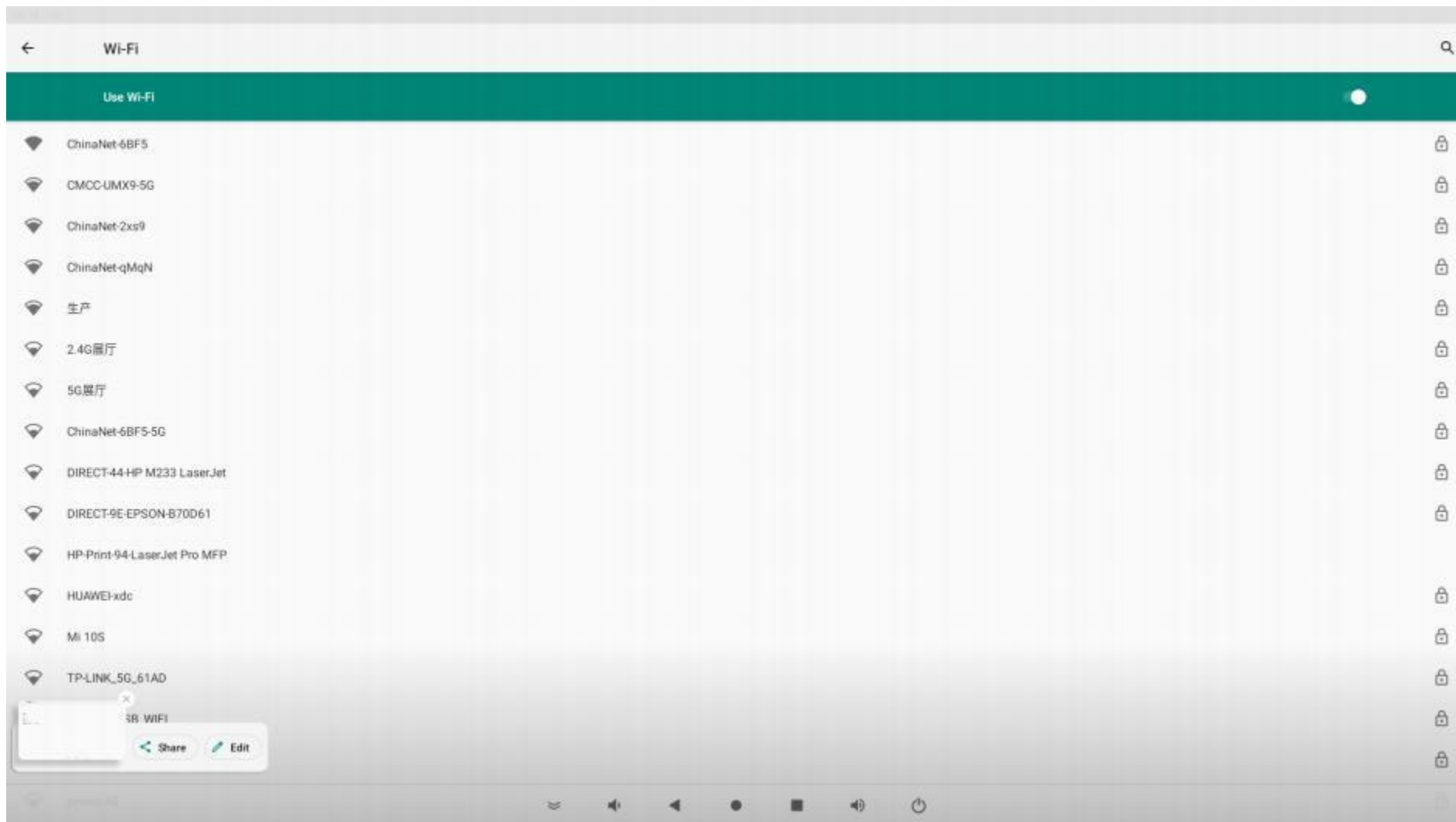
## 4.4.1.2、Turn on the wifi function



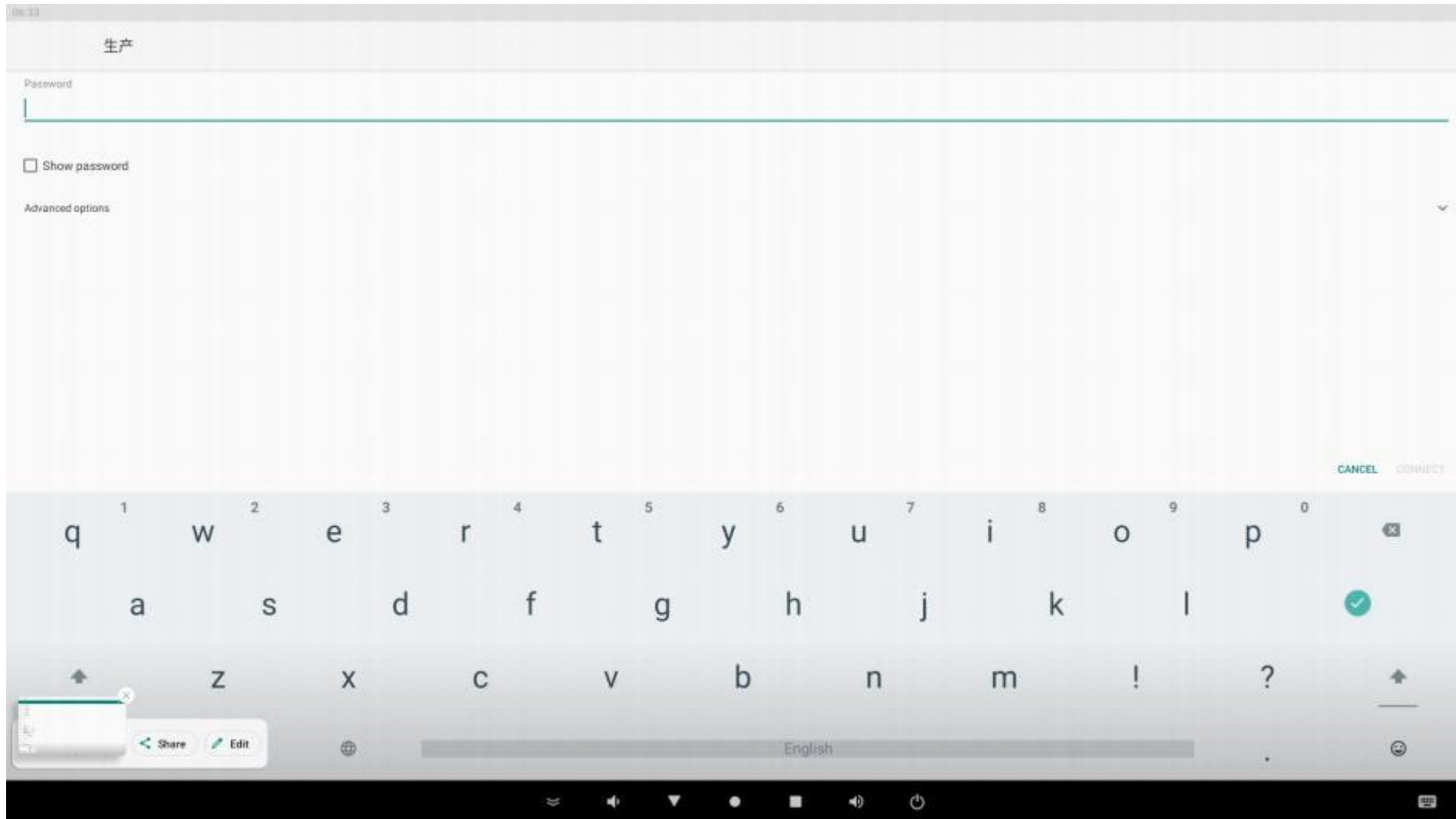
## 4.4.1.3、Turn on the wifi function



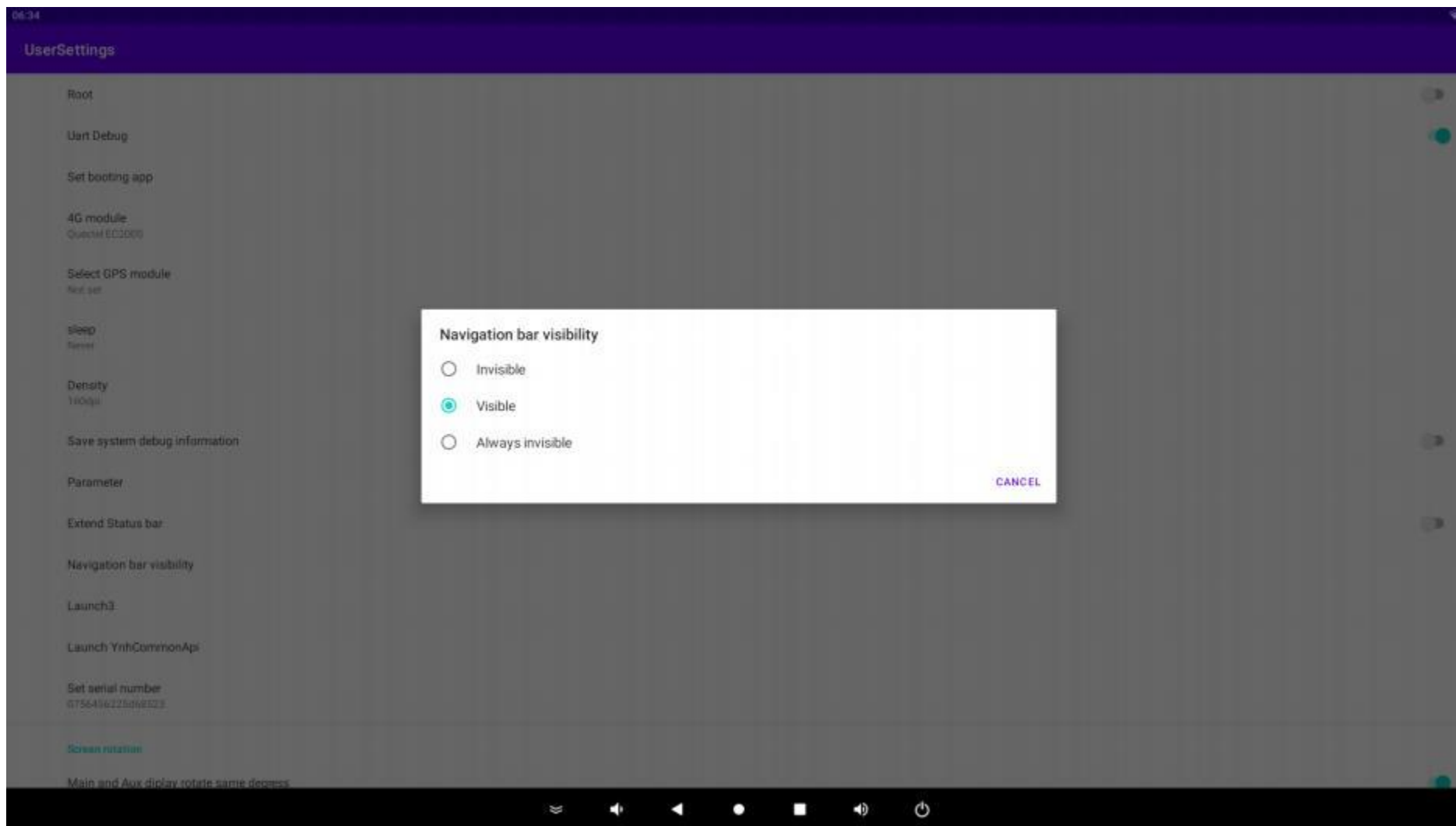
## 4.4.1.4、Turn on the wifi function



## 4.4.1.5、Turn on the wifi function



## 4.5.1、Open and close the status bar



## 4.6.1、Modify time zone



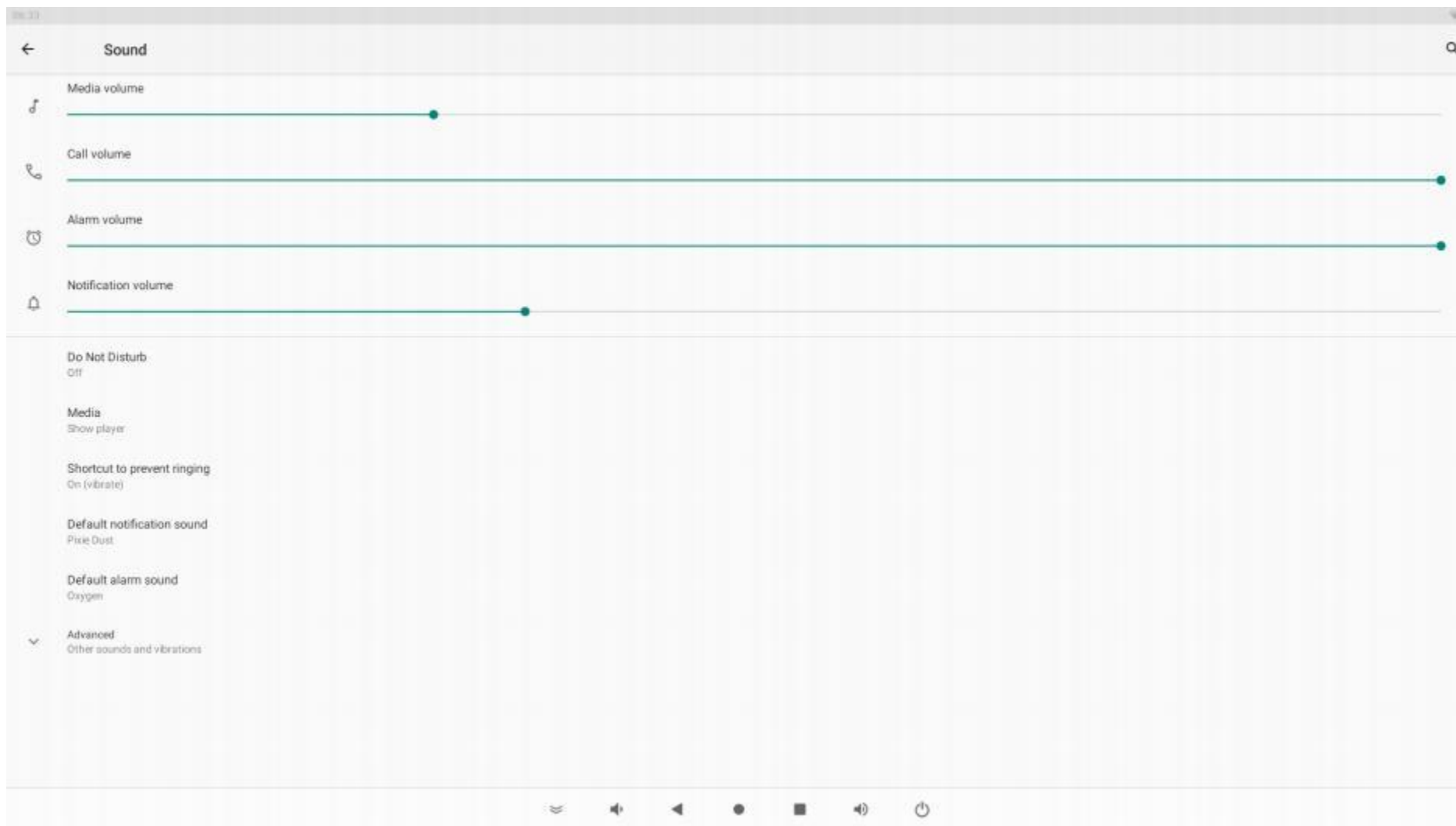
## 4.6.2、Modify time zone



## 4.6.3、Modify time zone



## 4.7.1、Adjust the volume of advertising video



## 5、Teaching video

- 1、 Adds an automatic cleaning schedule : <https://youtu.be/m0R29VLI7is>
- 2、 advertise : <https://youtu.be/4syYlqe7xxI>
- 3、 Enable logging and copy log files : <https://youtu.be/tqTLMboOU7c>
- 4、 Restore factory setup and reinstall APK : <https://youtu.be/N62wNB6LYIs>
- 5、 Change the system timezone : [https://youtu.be/ma-BNvaEc\\_I](https://youtu.be/ma-BNvaEc_I)
- 6、 DG600F coin-operated device setting method : [https://youtu.be/3NsN7KDJ\\_F0](https://youtu.be/3NsN7KDJ_F0)
- 7、 Set stirring parameters for GS805 : <https://youtu.be/vRkO26bIL1U>

## 6、Daily operation and maintenance requirements

- 1、Tools required for daily operation and maintenance
- 2、Daily operation and maintenance requirements
- 3、Fill out the daily operation and maintenance record form

## 6.1、Operation and maintenance tools

1 Three towels. Brown, green, white. Different colors are used to distinguish different functions.

For example, brown is used for cleaning, green for wiping, and white for drying.

2 A cross screwdriver, a 5MM socket, a 7MM socket

3 A pair of scissors

4 A pair of pliers

5 One small vacuum cleaner

6 One brush

7 A tool kit

8 A bottle of medical alcohol

9 A bucket

## 6.2、Operation and maintenance requirements

- 1 Operation and maintenance cycle: Clean at least once every two days, including replenishing materials and cleaning and disinfection
- 2 After refilling the paper cup, the top of the cup barrel needs to be sealed with a plastic wrap or a plastic bag
- 3 The powder box must be cleaned with clean water every 30 days
- 4 The waste water must be dumped clean and the waste water bucket cleaned
- 5 All silicone pipes used by the machine require annual replacement
- 6 Ensure cleanliness and dryness inside the machine
- 7 Clean the shell and cup opening with a wet cloth and disinfect with alcohol
- 8 Check whether the power supply line is intact, whether the network status is stable, and whether the insect prevention network is complete

## 6.3、Operation and maintenance records

- 1、Operation and maintenance records must be registered for future reference
- 2. For the operation and maintenance registration form, please refer to the attachment

Daily operation and maintenance record				
Details	state	operation	data	Operator's signature
pipeline	ok	clean	2022-10-10	Peter
Powder box	ok	clean		
Slag material box	ok	clean		
Wastewater tank	ok	clean		
Waste water tray	ok	clean		
auto-door	ok	clean		
Grinding bean device	ok	clean		
extraction apparatus	ok	clean		
ice machine	ok	clean		
displayer	ok	clean		

## 7、After - sales service

Our working hours :

Working day 8:00 —— 17:30

Contact information :

whatsapp : 18971011161、 18971168445

This device complies with part 15 of the FCC Rules. Operation is subject to the following two conditions: (1) This device may not cause harmful interference, and (2) this device must accept any interference received, including interference that may cause undesired operation.

Any Changes or modifications not expressly approved by the party responsible for compliance could void the user's authority to operate the equipment.

**Note:** This equipment has been tested and found to comply with the limits for a Class B digital device, pursuant to part 15 of the FCC Rules. These limits are designed to provide reasonable protection against harmful interference in a residential installation. This equipment generates uses and can radiate radio frequency energy and, if not installed and used in accordance with the instructions, may cause harmful interference to radio communications. However, there is no guarantee that interference will not occur in a particular installation. If this equipment does cause harmful interference to radio or television reception, which can be determined by turning the equipment off and on, the user is encouraged to try to correct the interference by one or more of the following measures:

- Reorient or relocate the receiving antenna.
- Increase the separation between the equipment and receiver.
- Connect the equipment into an outlet on a circuit different from that to which the receiver is connected.
- Consult the dealer or an experienced radio/TV technician for help.
- This equipment complies with FCC radiation exposure limits set forth for an uncontrolled environment. This equipment should be installed and operated with minimum distance 20cm between the radiator & your body.