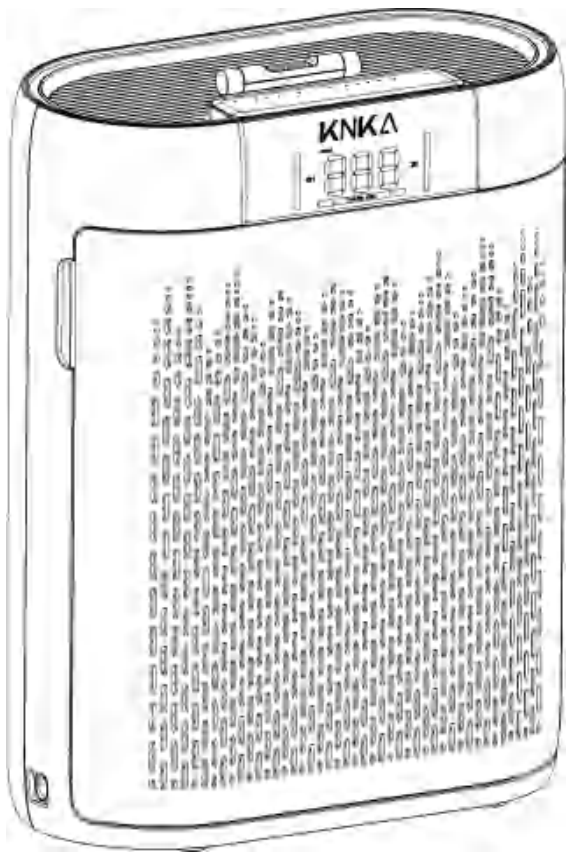


Air Purifier

Product manual

AP2000WF

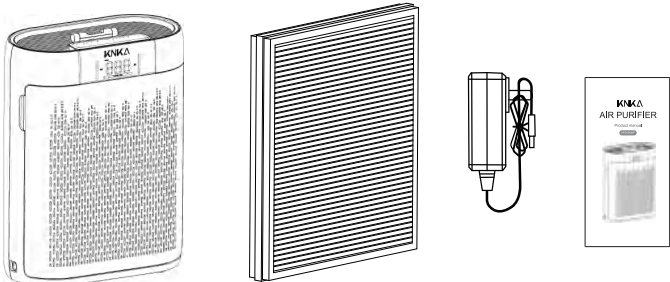


A. Principles of Air Purification

HEPA filter can effectively filter most particulate pollutants in the air, such as PM2.5, dust particles, pet hair, pollen, cigarette smoke and odor, etc., so as to achieve the purpose of air purification.

B. Air Purifiers and Accessories

Packing list:- air purifier- HEPA filter- Power Adapter - User Manual



C. Specifications

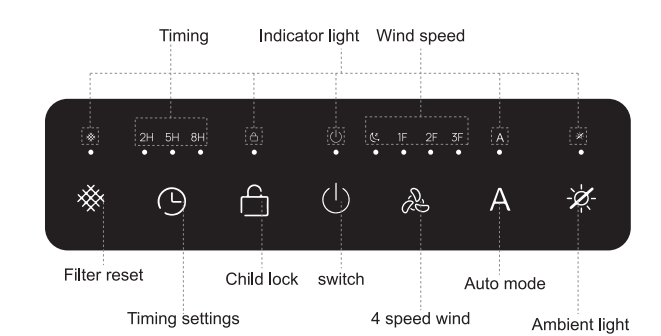
Power supply	100 – 240V~ 50/60Hz
Maximum power	24W
Noise	<45dB
Purification method	HEPA filter
Main material	ABS
Speed setting	5 speeds
Product Size	310*160*400mm
Net weight	2.7kg(5.9 lbs)
Power cord length	1.8 m

D. Use your air purifier



- 1 Connect the power adapter to the rear port of the air purifier and connect the socket
- 2 Tap to turn on the purifier.

E. Control Panel



F. How to operate the unit

Connect the power supply to hear a beep to complete the standby and all power indicator off, except for the on/off key is effective, other keys do not work; when pressing on/off to detect the air quality value until it is displayed. the default is the Wind speed 1F gear, no timing function.

	On/Off Button Turns the air purifier on/off. Wi-Fi Reset Button Tap to turn on your purifier, long press for 5 seconds to reset. Note: Indicator Blinks when connecting/disconnected from Smart Life-Smart Living, lights up when connected to Smart Life-Smart Living.
--	--

- 1.First of all, join the 1F mode and press 1F/2F/3F/ to adjust the wind speed.
 Under sleep mode The air purifier will operate at the quietest wind speed.

- 2.Press to select the ambient light on and off.

- 3.Press to automatically adjust the air speed according to the detected air quality.

PM2.5 Index	Air Quality	Wind Speed	Ambient light color
PM2.5<75UG	Excellent	1F	Green
75UG≤PM2.5<150UG	Mild pollution	2F	Yellow
PM2.5≥150UG	Heavy pollution	3F	Red

- 4.Press can select timing for 2h, 5h or 8h.

5. Press and hold for three seconds and then hear a beep to enter, unlock will be the same; when the child lock indicator lights and mistakenly touching any key, all the indicator light to remind.

6. In the power on state, the filter timing starts to consume, the initial time is 2000hours, when the filter life is exhausted, the filter indicator blinks; Filter reset: after replacing the filter, press and hold for 5 seconds until you hear three beeps, reset is completed(the filter also could be reset in the middle of using).

G. Precautions

- 1. Non-professional maintenance personnel are prohibited from dismantling and refitting the air purifier.
- 2. Prohibit the use of power beyond the specification.
- 3. Do not get the air purifier wet.
- 4. Do not wipe the air purifier with alcohol or organic solvent.
- 5. Avoid using the unit around heavy, oily smoke.
- 6. Do not spray insecticides in or on the unit.
- 7. Do not run the unit if the power cord is damaged.
- 8. It is forbidden to use different types of power adapters

- 1. Please pay attention to ventilation when using the air purifier and gas appliances at the same time. Gas produces an odor for safety reasons. The carbon filter absorbs and removes odors.

- 1. Close doors and windows to effectively and quickly purify indoor air.
- 2. Inspect the power plug regularly for any damage.

NOTE If any of the following happens, unplug the power immediately.
—No button are working.
—Short circuit.
—The power cord or plug becomes abnormally hot.
—There is a burning smell or unusual sound and vibration.
—Other abnormal phenomena or malfunctions.

Trouble Shooting:

- No Power
- Check power cord plug is completely plugged into the unit.
 - Ensure the wall outlet has power.
- No wind coming from the unit
- Ensure the unit has power and try increasing the fan speed.
 - Make sure nothing is blocking the air intake. Outside and inside the filter.
 - Ensure nothing has fallen into the unit from the top panel that is preventing the fan from spinning.
- Room Odor is difficult to remove
- The carbon filter acts as a sponge and can only absorb some much, please change to a new filter.

After checking the above items, if the air purifier still doesn't work, please unplug the unit and contact our support team.

H. Maintenance

The unit needs regular maintenance to ensure that the air purifier is at optimal performance. Regularly wipe the air inlet and outlet with a soft, damp cloth. Allow unit to dry completely before turning back on.

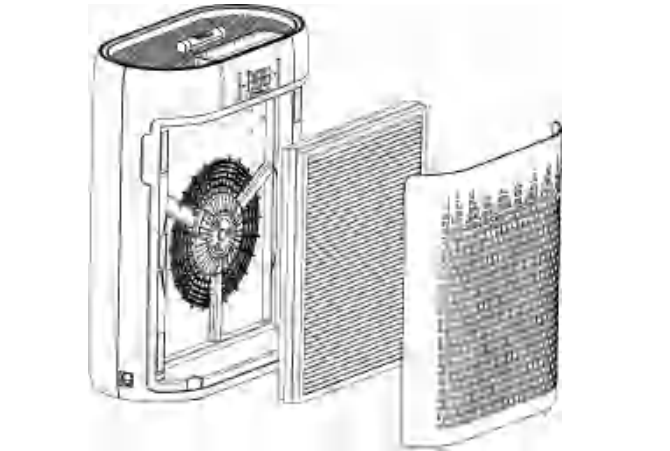
Instructions of cleaning filter:

- 1.Turn off the unit and unplug the power cord.
 - 2.open the filter cover and remove the filter
 - 3.use a soft brush or vacuum cleaner to clean the prefilter screen.
 - 4.Tip: you CAN place the filter in direct sunlight for 1-3 hours to enhance sterilization and some deodorization.NOT required! Do NOT allow the filter to get wet.
- Note: Cleaning the prefilter only helps to maintain filtering effectiveness.

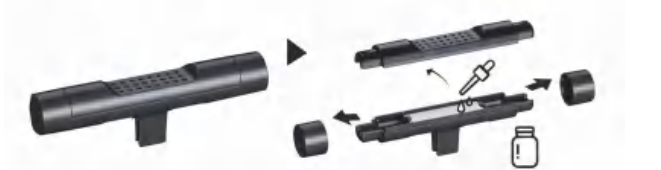
Purge Filter Replacement:

When the filter element needs to be replaced, the filter indicator light will flash to remind you. (replace every 3-4 months)

1. Turn off the device and unplug the power cord from the left side of the device
2. Open the purifier cover from the notches on both sides and remove the filter
3. Install the new filter (remove the protective plastic bag), install the filter and close the purifier cover (test to make sure the lid is secure)
4. Press and hold the filter button for 5 seconds until you hear 3 beeps to complete the reset timer



I. Aromatherapy Function

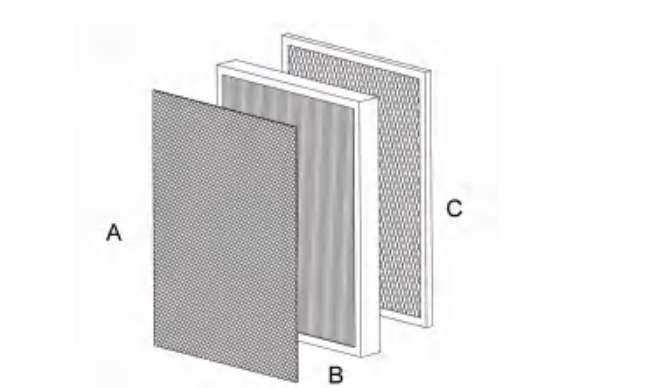


1. Remove the covers at both ends. Open the top cover of the essential oil box.Add your chosen essential oil (4-5 drops each time). Reassemble the parts.
2. Put it back in the slot. (Fit for a Machine with a grille.)

Note:
Turn off the machine before adding oils.Use provided droppers: don't pour directly. Add 4-5 drops each time.

J. About The Filter

The air purifier uses a 3-stage filtration system to purify air.



Product Name: Air purifier Model: AP2000WF
Manufacturer: DongGuan Zeyuan Household Appliances Co.,Ltd
Adresse: Room 802, Building 4, No. 13, Tianxing Road,Huangjiang Town,
Dongguan City, Guangdong Province, China
Conforms to UL Std.507
Certified to CSA Std C22.2 No.113

MADE IN CHINA



FCC Caution:
This device complies with part 15 of the FCC Rules. Operation is subject to the following two conditions: (1) this device may not cause harmful interference, and (2) this device must accept any interference received, including interference that may cause undesired operation.
Any changes or modifications not expressly approved by the party responsible for compliance could void the user's authority to operate the equipment.
NOTE: This equipment has been tested and found to comply with the limits for a Class B digital device, pursuant to Part 15 of the FCC Rules. These limits are designed to provide reasonable protection against harmful interference in a residential installation.
This equipment generates, uses and can radiate radio frequency energy and, if not installed and used in accordance with the instructions, may cause harmful interference to radio communications. However, there is no guarantee that interference will not occur in a particular installation.
If this equipment does cause harmful interference to radio or television reception, which can be determined by turning the equipment off and on, the user is encouraged to try to correct the interference by one or more of the following measures:
-- Reorient or relocate the receiving antenna.
-- Increase the separation between the equipment and receiver.
-- Connect the equipment into an outlet on a circuit different from that to which the receiver is connected.
-- Consult the dealer or an experienced radio/TV technician for help.
To maintain compliance with FCC 's RF Exposure guidelines, This equipment should be installed and operated with minimum distance 20cm between the radiator and your body: Use only the supplied antenna.

FCC ID:2BD7R-AP2000WF