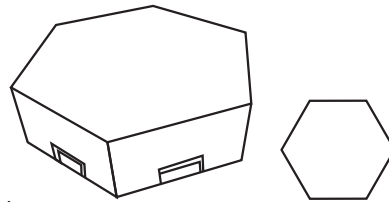


Smart Scene Music Lamps

Instruction



Instruction



Basic parameters :

Controlling method : APP/RF Type/key board type
Working temperature : -20degrees to +60degrees
Power : 1.5W/Piece Power supply voltage : DC5V
(Each DC5V 2A power supply can load 15pcs modules,if need more modules.
Applied places:study room,living room,bedroom,night club or bar,KTV, gym,music bar or restaurant, coffee shop and other home and commercial places.

Product Characteristics

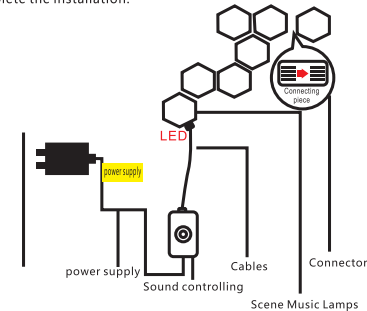
Support mobile APP control, support IOS and Android system



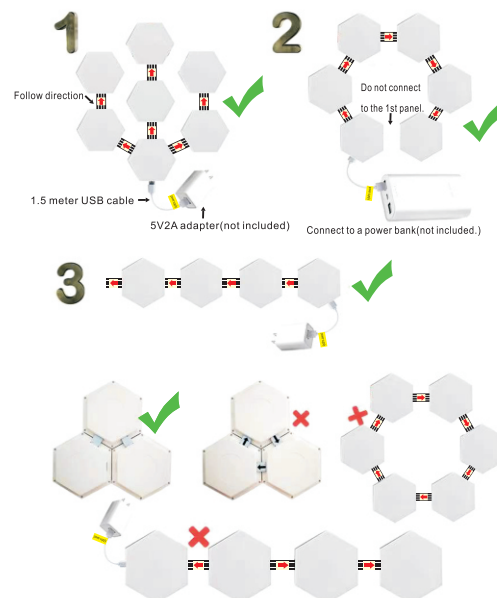
Stay tuned for more smart interactive features!

Installation instructions

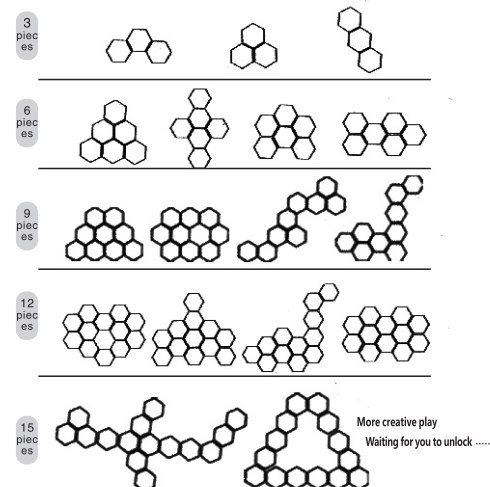
1. Please make a model layout plan in advance or pre-manufacture the model on the desktop, and define the position of the drive control line entrance.
2. Remove the release paper on one side of the double-sided non-marking adhesive, stick the double-sided adhesive to the center of the back of the module, and remove the release paper on the other side of the non-marking adhesive before installation. (This step is omitted for desktop installation)
3. First locate the drive control line entrance module, then insert the arrow pointing end of the connecting piece (NEXT end) into the cascade module, and insert the "PRE" end of the connecting piece into the previous module according to the sequence of the modeling plan to complete the installation.
4. Insert the USB end of the drive control line into the first module, and then plug the other end of the drive control line into any signal output port corresponding to the pickup, and power the power adapter to complete the installation.



Connection manual



DIY any assembly style



<< Please read carefully before using the product

made in china

FCC Warning

This device complies with part 15 of the FCC Rules. Operation is subject to the following two conditions: (1) This device may not cause harmful interference, and (2) this device must accept any interference received, including interference that may cause undesired operation.

Any Changes or modifications not expressly approved by the party responsible for compliance could void the user's authority to operate the equipment.

Note: This equipment has been tested and found to comply with the limits for a Class B digital device, pursuant to part 15 of the FCC Rules. These limits are designed to provide reasonable protection against harmful interference in a residential installation. This equipment generates uses and can radiate radio frequency energy and, if not installed and used in accordance with the instructions, may cause harmful interference to radio communications. However, there is no guarantee that interference will not occur in a particular installation. If this equipment does cause harmful interference to radio or television reception, which can be determined by turning the equipment off and on, the user is encouraged to try to correct the interference by one or more of the following measures:

- Reorient or relocate the receiving antenna.
- Increase the separation between the equipment and receiver.
- Connect the equipment into an outlet on a circuit different from that to which the receiver is connected.
- Consult the dealer or an experienced radio/TV technician for help.

The device has been evaluated to meet general RF exposure requirement. The device can be used in portable exposure condition without restriction.