

JEPK

Children's Tablets T10

Operation manual

Please read the notes and important tips in this instruction before using.

Chapter one (Overview)	
1-1	appearance
1-2	Button
1-3	Turn on and off
1-4	Enter pause and wake up mode
1-5	Lock and unlock
1-6	Start screen command
1-7	Text Input
Chapter 2 (browser)	
2-1	Browser
Chapter 3 (application)	
3-1	Camera
3-2	Gallery
3-3	Video player
3-4	Music
3-5	Calendar
3-6	Calculator
3-7	File explorer
3-8	Download
3-9	Mail
Chapter 4 (configuration)	
4-1	Sound adjustment
4-2	Wireless network settings
4-3	screen setting

The picture is for reference only, please refer to the specific product.



- Usb Interface
- Rear Camera
- Volume Up
- Switch Key
- TF Card Socket
- Volume Down
- Front Camera
- Horn
- Headphone Interface

Power button
Press the power button for 2-3 seconds to turn on the tablet.
When the tablet is turned on, press this button to find pause mode. If you press this button again, the tablet will wake up.

volume
"+" and "-" buttons to adjust the volume.

edit
This button is used to edit the application.

ignition
Press the right power button for 2-3 seconds, and the A9 logo and picture will appear alternately until the interface is entered.

close
Press the power button for 2-3 seconds because < if you want to turn it off > appears on the screen, press OK to turn it off.

Enter pause mode
Click the power button and the tablet will enter pause mode to save energy.

Exit pause mode
When you are in suspend mode, click the power button and the tablet will exit this mode and wake up.

locking
You can adjust the screen timeout and manage it from settings screen.
If you do not use the tablet before the screen times out, the system will enter pause mode and lock.

unlock
Put your finger in the shape of the lock. Move it to the right and you'll see that the lock is open. In the application interface.

Explorer
Back Off Start Recent Applications

Your tablet has a virtual touch keyboard that allows you to enter text, numbers, and symbols. To access the keyboard, simply place yourself in the writing area and the keyboard will appear on the screen.

You can switch between numbers and letters by pressing [123].
You can switch between uppercase and lowercase by pressing [Shift].

You must be connected to the network before you can access the browser. If you have any questions, please consult your service provider.

Tablet browser can connect to Internet via WIFI to meet your needs.

Click on [WIFI] To adjust WIFI, you can use the browser.

Settings
Home Settings
[Back] [Home] [App Store] [Settings] [Search] [Refresh] [Share] [More]

You can access your browser from the application screen by clicking [Browser]. On the default home page, the most recent page is displayed.
The following functions are supported.

Rollback updates Input Bookmarks

Type the email address you want to access in the browser bar.
To save your favorite page or old visit, click Add to favorites.
Touch this [Activity] displays the activity of the saved page.
Touch this [Search] Search or type an email address.
Touch this [Close] Close the navigation bar.

Touch this [Camera] Access the camera from the application screen and the image will appear on the screen. You can do the following.



Camera

Touch this to select photography mode.
 Draw pictures

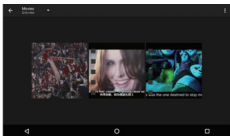
Video

Touch this to select video mode
 Capture video

View photos and videos

In the preview interface, click the screen to preview, or you can adjust the picture to movie view.

Touch this From the application screen, it includes all the photos.



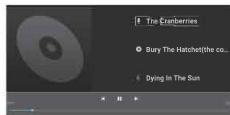
Touch this You can sort photos by date and place.
Touch this To select an album, edit or delete it.
Touch this Select the disk you want to edit or delete.
Touch this go to see the firms.

Touch this Access the video player.
You can see the video in these files.
There are buttons in the background to control the video.



Touch this Visit music. You can sort them by artist or album.

In this page, the music is arranged in alphabetical order. Press the music you want to listen to and play it. Click < current song > to display the page of this album; the lyrics will be displayed on the right.



Artists

On the < artists > page, artists are classified according to their initials, play one of them, and you will see the artist's album and music, because you can listen to music.

Album

In the albums page, you can view all albums by sliding. Click on the album cover and it will automatically switch to the background. When all the music is over, you can play them again.

Touch this To access the calendar, display the month on the page and click Look at that day

Data view: press a few seconds on the topic to record, view, edit and delete; Click in the space to set a new theme; In the blank, press to adjust the new theme or show / not show the lunar day,
Weekly view: press a few seconds to record, view, edit and delete; In the blank, press to schedule new activities or show / not show the lunar week.
Month view: click long date to set a new case or show / don't show the lunar month.

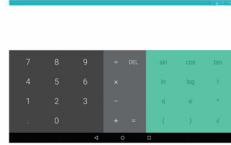
Agenda: list all activities and click View Details.

In any view, when you switch to another date, you can return to the current day, week or month through the < Today > button.



You can play Search task memos, edit, country and share

Touch this Access the calculator from the application screen.



Touch here in the application list; supports the mutual file copy in these two internal memory places and the SD tab.

Click here in the list of applications; you can preview the download or index of documents already downloaded.

Click download file to stop or delete download content.

You must be connected to the network before you can use e-mail, if you have problems with your network connection, please contact your service provider

Set up an account

If you don't have an email account, follow the instructions to process email to configure it
If you want to add an email, click settings to add the email, and then click Add account.



Other Organizer

In the <inbox> page, you can click on this on the top right to edit a mail quickly.

On the draft page, you can:
Add containers quickly.

Enter the recipient's email address or click list of contacts to select the e-mail directory, allows you to copy the blur to the directory you sent to

Write the subject and text of the email. (in the text area, copy and share content are supported).

Additional documents

Add a file from document management, and when you are finished, the file will appear on the new message page, click to open or delete the file. Reply, forward message Click the right page of the preview area to reply or forward Basic operation is equal to eraser operation

Click here to enter the system setup interface.

Click here to access sound settings. If you need more details, please press the mute button. Click < volume settings > to set volume notification, multimedia and alarm sounds, and allow you to select ringtones, operate and start software disks.



This part includes: wireless network configuration. Select the Wi Fi option, set the button to 'on' and the system will automatically search for available networks and display a list.

Among them, if you have this logo Next to you, that is to say, the network does not need a password, you can use it directly.

The logo Indicates that the network is protected. You must enter a password to connect.

Display Screen settings include: setting wallpaper, idle time, brightness, auto rotation.

Set Wallpaper

On the background settings screen, you can adjust the background and dynamic background; you can select it from the library.

Screen Waiting

When the monitor is in the light state for a period of time and not in use, it will automatically lock to save power.

Bright

You can adjust the brightness to get your favorite brightness.

Font Size

Allows you to adjust the font size according to your preferences, including: small font, standard font, large font, large font.

FCC Statement

This equipment has been tested and found to comply with the limits for a Class B digital device, pursuant to part 15 of the FCC Rules.

These limits are designed to provide reasonable protection against harmful interference in a residential installation. This equipment generates, uses and can radiate radio frequency energy and, if not installed and used in accordance with the instructions, may cause harmful interference to radio communications. However, there is no guarantee that interference will not occur in a particular installation. If this equipment does cause harmful interference to radio or television reception, which can be determined by turning the equipment off and on, the user is encouraged to try to correct the interference by one or more of the following measures:

- Reorient or relocate the receiving antenna.
- Increase the separation between the equipment and receiver.
- Connect the equipment into an outlet on a circuit different from that to which the receiver is connected.
- Consult the dealer or an experienced radio/TV technician for help.

This device complies with part 15 of the FCC Rules. Operation is subject to the following two conditions:

- (1) This device may not cause harmful interference, and
- (2) this device must accept any interference received, including interference that may cause undesired operation.

Any changes or modifications not expressly approved by the party responsible for compliance could void the user's authority to operate the equipment.

This equipment complies with FCC radiation exposure limits set forth for an uncontrolled environment. The device has been evaluated to meet general RF exposure requirements.

The device can be used in portable exposure condition without restriction.