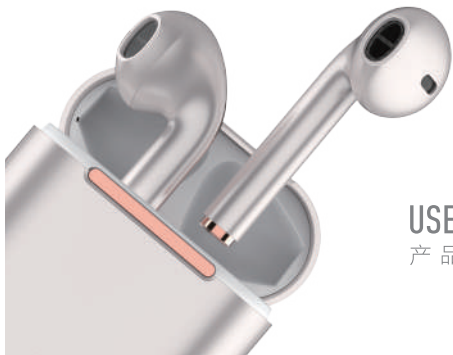


Bluetooth 5.0
Wireless Earbuds
Noise Canceling
Sports 3D Stereo

TWS EARBUDS J18

真无线蓝牙耳机



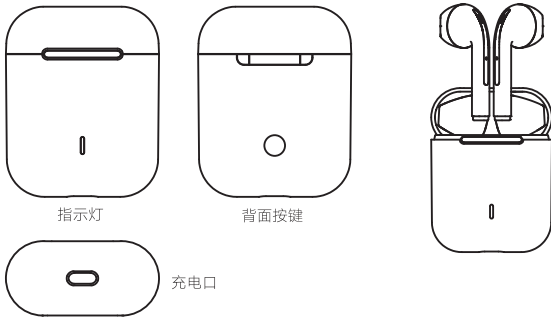
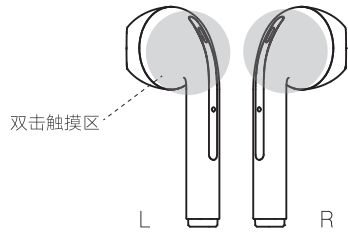
USER MANUAL

产品使用说明

参数配置

产品型号:	J18
蓝牙版本:	TWS V5.0+EDR, 超低功耗
支持协议:	A2DO1.3/HFP1.6/HSP1.2/AVRCP1.6/D1 1.3
蓝牙使用频段:	2.4GHZ
电池容量:	左右耳内置30mAh/3.7V 充电盒电池300mAh/3.7V
充电电流:	耳机DC5V~30mA 充电盒DC5V~300mA
耳机额定消耗电流:	10mA
充电时间:	耳机约 1.5h 充电盒约 1.5h
听歌时长:	4~5h (70%音量)
蓝牙传输距离:	10m
频响度范围:	20HZ~20KHZ
重量:	耳机3g ±0.1g (单支) 充电盒34g ±0.1g (单盒)

产品外观



使用说明

- 配对连接: 充电仓打开盖子, 左右耳同时开机, 两边耳机自动配对, 并在手机蓝牙搜索处出现该蓝牙名称, 点击蓝牙名连接
- 开机: 开盖, 拿起自动开机, 配对连接先前设备
- 关机: 放回充电仓, 关盖, 自动关机充电
- 接听电话: 左/右声道轻触1下
- 挂断电话: 左/右声道轻触1下
- 拒听电话: 左/右声道长按2秒
- 暂停播放歌曲: 左/右声道轻触1次
- 音量加: 右声道轻触3下

- 音量减: 左声道轻触3下
- 上一曲: 右声道轻触2下
- 下一曲: 左声道轻触2下
- 召唤Siri: 左/右声道长按3秒(仅支持IOS系统)
- 手动开关机: 左/右声道长按5秒

充电盒指示灯

- 将耳机放进充电盒, 绿灯亮1秒, 充电盒正在给耳机充电, 绿色灯呼吸闪烁, 可通过按充电盒背面按键查看充电盒电池电量。

- 给充电盒充电, 红色灯呼吸闪烁, 充满电, 绿灯长亮
(请注意务必使用5V1A的充电线对蓝牙耳机充电盒进行充电或使用购买产品时配送的充电线进行充电)

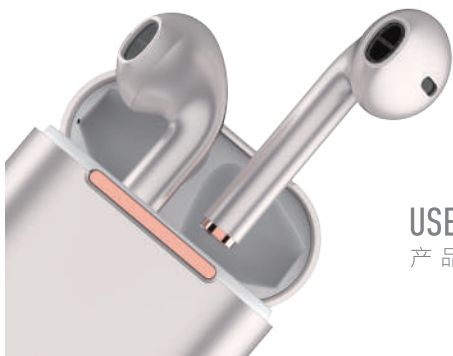
注意事项

- 请勿暴力对待本产品, 不要重物挤压, 远离高温高湿环境。
- 远离WiFi及路由器及其它高频发射设备, 这样会影响本机的信号接收, 造成声音的卡顿及断连。
- 请在有效环境(10米)内使用本产品, 并且蓝牙设备与耳机直接不要有实体阻挡(例如墙体等)。
- 产品长期不使用的話, (一个月内) 将耳机和底座进行充电。

Bluetooth 5.0
Wireless Earbuds
Noise Canceling
Sports 3D Stereo

TWS EARBUDS J18

真无线蓝牙耳机



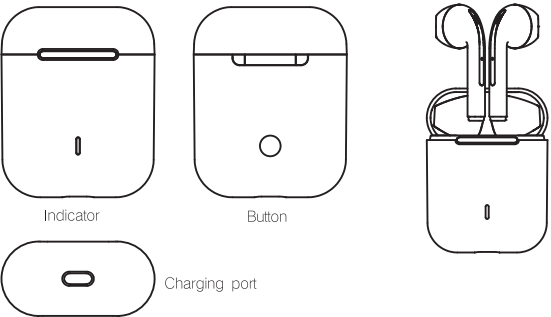
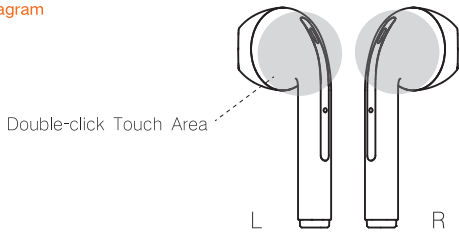
USER MANUAL

产品使用说明

Specification

Name:	J18
Bluetooth version :	TWS V5.0+EDR
Support protocol:	A2DO1.3/HFP1.6/HSP1.2/AVRCP1.6/D1 1.3
Frequency :	2.4GHZ
Charging current:	Earbuds:DC5V~30mA, Charging case :DC5V~300mA
Charging time:	Earbuds:1.5 hours , Charging case :1.5 hours
Music time:	4~5 hours(70% of the volume)
Transmit distance :	10m
weight:	Earbud: 3g ±0.1g, Charging case: 34g ±0.1g
Capacity:	Earbuds:30mAh/3.7V, Charging case :300mAh/3.7V
Frequency resopnse range:	20HZ~20K+HZ
Earphone rated consumptioncurrent:	10mA

Product diagram



Operation Instruction

- Pairing and connection: Open the cover of charging tank and take out all earphones, then left and right earphones will be turned on and paired automatically , and then bluetooth name will be showed in bluetooth searching area of mobile phone, click bluetooth name to finish connection.
- Turn on: Open the cover, take out all earphones, connect previous devices automatically.
- Turn off: Put all earphones back into charging tank, shut cover and then earphones will be trued off and charged automatically.
- Answer call: Touch left/right earphone 1 time.
- Hang off call: Touch left/right earphone 1 time.

- Reject call: Press left/right earphone for 2 seconds.
- Pause music: Touch left/right earphone 1 time.
- Increase Volume: Touch right earphone 3 times.
- Decrease Volume: Touch left earphone 3 times.
- Last song: Touch right earphone 2 times.
- Next song: Touch left earphone 2 times.

- Call Siri: Press left/right earphone for 3 seconds. (IOS only)
- Turn off manually: Press left/right earphone for 5 seconds.

charging box indicator light

- Put earphone into charging box, the green light will flash for 1 second. Green breathing light will keep flashing during charging box is charging earphone . You can check remaining battery capacity of charging box by pressing the button on it's back side.

- Charge the charging box, the red light flashes slowly, and the green light stays on when fully charged
(Please be sure to use 5V/1A charging cable or attached charging cable when you purchasing products)

Warnings:

- Do not treat product violently, do not squeeze product by heavy objects, keep away from high temperature and humidity environment.
- Stay away from WiFi, routers and other high-frequency transmitting equipments, which will affect the signal reception of bluetooth device, result in the sound of the outage and disconnect.

FCC Warning
This device complies with part 15 of the FCC rules. Operation is subject to the following two conditions: (1) this device may not cause harmful interference, and (2) this device must accept any inte rference received, including interference that may cause undesired operation.

Changes or modifications not expressly approved by the party responsible for compliance could void the user’s authority to operate the equipment.

NOTE: This equipment has been tested and found to comply with the limits for a Class B digital device, pursuant to part 15 of the FCC Rules. These limits are designed to provide reasonable protection against harmful interference in a residential installation. This equipment generates uses and can radiate radio frequency energy and, if not installed and used in accordance with the instructions, may cause harmful interference to radio communications. However, there is no guarantee that interference will not occur in a particular installation. If this equipment does cause harmful interferenceto radio or television reception, which can be determined by turning the equipment off and on, the user is encouraged to try to correct the interference by one or more of the following measures:

- Reorient or relocate the receiving antenna.
- Increase the separation between the equipment and receiver.
- Connect the equipment into an outlet on a circuit different from that to which the receiver is connected.
- Consult the dealer or an experienced radio/TV technician for help.

Radiation Exposure Statement
The device has been evaluated to meet general RF exposure requirement. The device can be used in portable exposure condition without restriction.