



SHOWTOP

Advertising machine Commercial intelligent terminal

User Manual



Safety Warning

To use the product safely, correctly, and to keep users from suffering injury or property loss, please observe the following safety precautions when installing, using or maintaining.

Please read this handbook before operating the product and keep the handbook for future reference.

1. Notice and observe all the warnings and illustrations.
2. Do not adjust, maintain or modify if you do not have appropriate qualifications.
3. Do not open or remove the rear cover, box or cover board of the product. Please contact the dealer or after-sales service center when in need of adjustment or maintenance.
4. Do not place any items on the product. The product may be damaged if foreign objects enter the internal unit.
5. Do not tread on or squeeze the power line, especially the plug or connection point of the power line to the product.
6. Do not put the product in flammable or corrosive gaseous environment, which may cause fire or damage the product. Placing the product in proximity to flammable gas can easily result in a dangerous explosion.
7. Please turn off power or unplug the power cable immediately if there is smoking, off-odor, or abnormal noise. Contact the after-sales service center for maintenance after confirming there is no more smoke or odor. Further use could result in fire.
8. Only qualified service people can maintain. If the product gets any kind of damage, such as damage to the plug, foreign matter or liquid into the unit, exposure to rain or humidity, loss of function, or dropped, please contact dealer or after-sales service center.
9. Do not expose the product to rain or chemicals. If the product is moist, allow to fully dry before plugging in or turning on power.
10. Turn off the power when cleaning the product.
11. Failure to properly secure all screws during installation can result in a fall of the product. Ensure all mounting hardware and other installation accessories are properly secured during installation.
12. Do not touch any fixed components inside the product. Failure to do so can result in damage to the product or person.
13. Be careful during maintenance of product even if the power is off. Some components are equipped with UPS, and can continue to supply power which is dangerous to people.

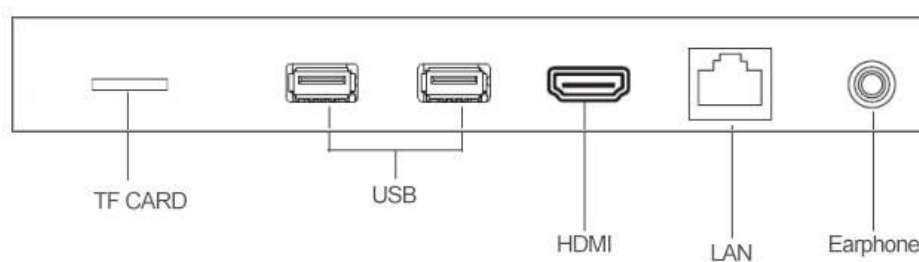
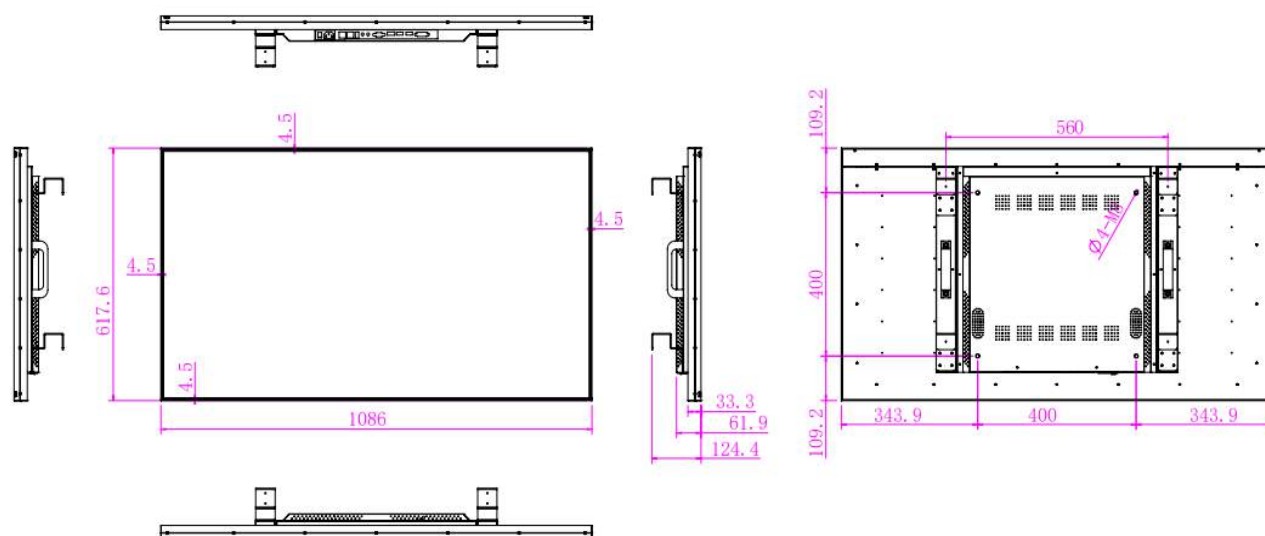
Notes

1. Please put the product in a flat, stable and dry place. Avoid direct sunlight, high temperature, humidity, dust, and corrosive gas.
2. If the product is installed on the wall, please make sure the wall's load bearing capacity is sufficient. To avoid falling and injuring people, install according to the included instructions with mounting hardware.
3. The LCD may experience image distortion or color decay when the temperature variation is too large. Wait for a moment (with power on) and the distortion should disappear.
4. Do not block the ventilation opening. Install the product according to this handbook.
5. Do not install the product near any heat source such as a radiator, heat register or stove.
6. Do not use uncertified connecting lines, which might cause equipment failure.
7. Do not press, stretch or heat the connecting lines, which might cause damage to it.
8. Please firmly grasp the plug of the connecting line when inserting and removing. Pulling the connecting line might cause damage to it.
9. Cut off power and the connecting line immediately and contact the after-sales service center if the product or the connecting line is damaged for some reason. Continued use without maintenance might cause smoking or off-odor.
10. Do not hang or lean on the product. Doing so can cause the product to fall or become damaged. It may also cause injury to people. Pay special attention when children are nearby.
11. Please turn off power for safety if not using the product for a long time.
12. Do not let the connecting line get squeezed, buckled, pulled or twisted.
13. Make sure the power is turned off and the connecting lines are removed when moving the product.
14. Avoid collisions with the product. This may cause equipment failure.
Do not replacement of a button cell with an incorrect type that can defeat a safeguard;
15. Do not disposal of a button cell into fire or a hot oven, or mechanically crushing or cutting of a button cell, that can result in an explosion;
16. Do not leaving the button cell in an extremely high temperature surrounding environment that can result in an explosion or the leakage of flammable liquid or gas;
17. Button cell subjected to extremely low air pressure that may result in an explosion or the leakage of flammable liquid or gas;
18. Button cell not replaceable by users, if need replace, Please contact the device manufacturer or professional for replacement;
19. Plug on the power supply cord is used as the disconnect device, The plug must be inserted into a socket that is easily accessible to the user.
There should be no obstructions around the socket;
20. Do not place the product and plug near a fire or heat source;

I.Product Name

Product model: AI49W

II.Structural Diagram of the Product and Port



III.Basic Specifications and Parameters

Display Parameters	
Panel size	49 inches
Display area size	1073.8(H)*604(V)mm
Aspect ratio	16:9
Resolution	3840*2160
Display color	1.07G
Brightness	600cd/m2(center point, typical value)
Contrast	1200:1
Visible angle	89/89/89/89(Min.)(CR≥ 10)
Response time	8ms(typical value)
Field frequency	50/60Hz
Theoretical service life	30000H
Power consumption	150W MAX

Specification Parameters	
Chip	Quad-core A55
Memory	DDR2G(Optional)
Built-in storage capacity	EMMC16G(Optional)
Language	Chinese , English
Ethernet	100M adaptive Ethernet
Wi- Fi	Supports 2.4G 802.11 b/g/n 1T1R WLAN
Input interface	RJ45 * 1, HDMI IN * 1, USB HOST * 2
Output interface	Earphone out* 1

AV Parameters	
Speaker	8 Ω 5W*2
Audio mode	Left & Right channel
Audio format	MP3/WMA
Video format	Support AVI, MKV, MP4, FLV, WAV, TS, etc
Image format	Support BMP, JPEG, PNG, GIF, etc

Product Accessories	
Wall-mounted component	1PC (Including splicing hook*4, M4 screw*16)
Remote control	1PC
Power cord	1PC
Antenna rod	1PC
Quality Certificate	1PC
Warranty Card	1PC
User Manual	1PC

IV.Operating Environment

Operating Environment	
Operating temperature	0℃~40℃
Storage temperature	-10℃~60℃
Ambient humidity	<85%
Operating voltage	100-240V~, 50/60Hz

V. Structure and Assembly Instructions

1. The device supports both horizontal and vertical wall-mounting .
2. The back of the unit is equipped with Ø4x16 threaded holes (as illustrated in Figure 1) designed for securely fastening the splicing hooks. The center-to-center distance between these holes is 560mm x 400mm .
3. Of the threaded holes on the back, those measuring 400mm x 400mm are designated for wall-mounting. When installing, please use PM8x15 screws .
4. The device is equipped with 2 USB interfaces (for software upgrading) .

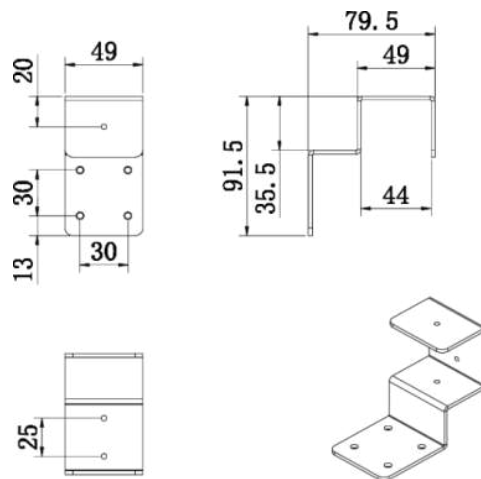
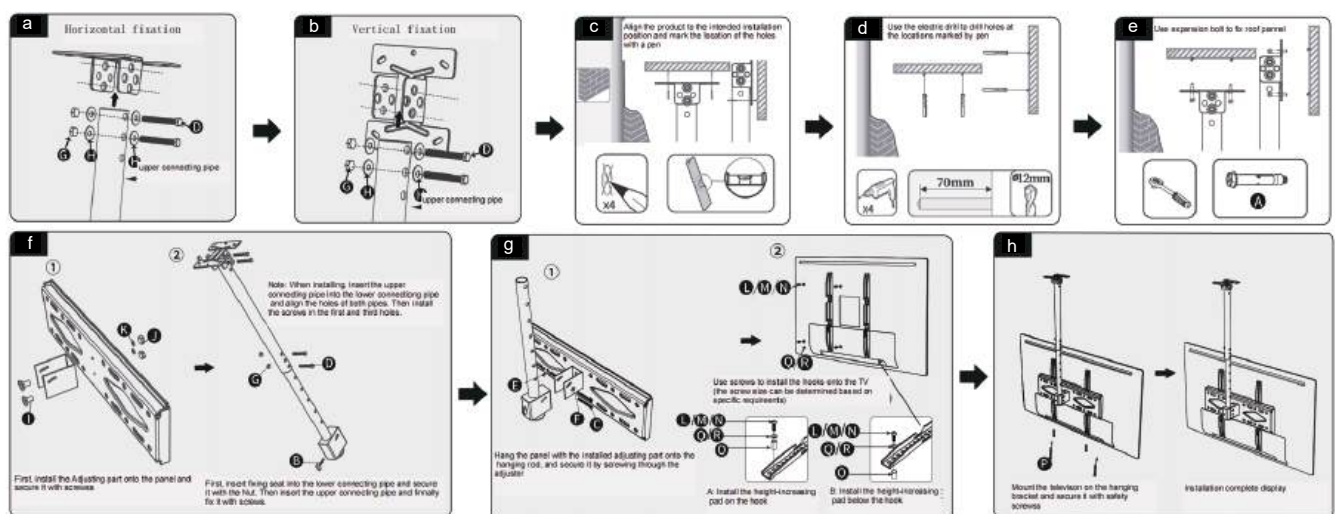
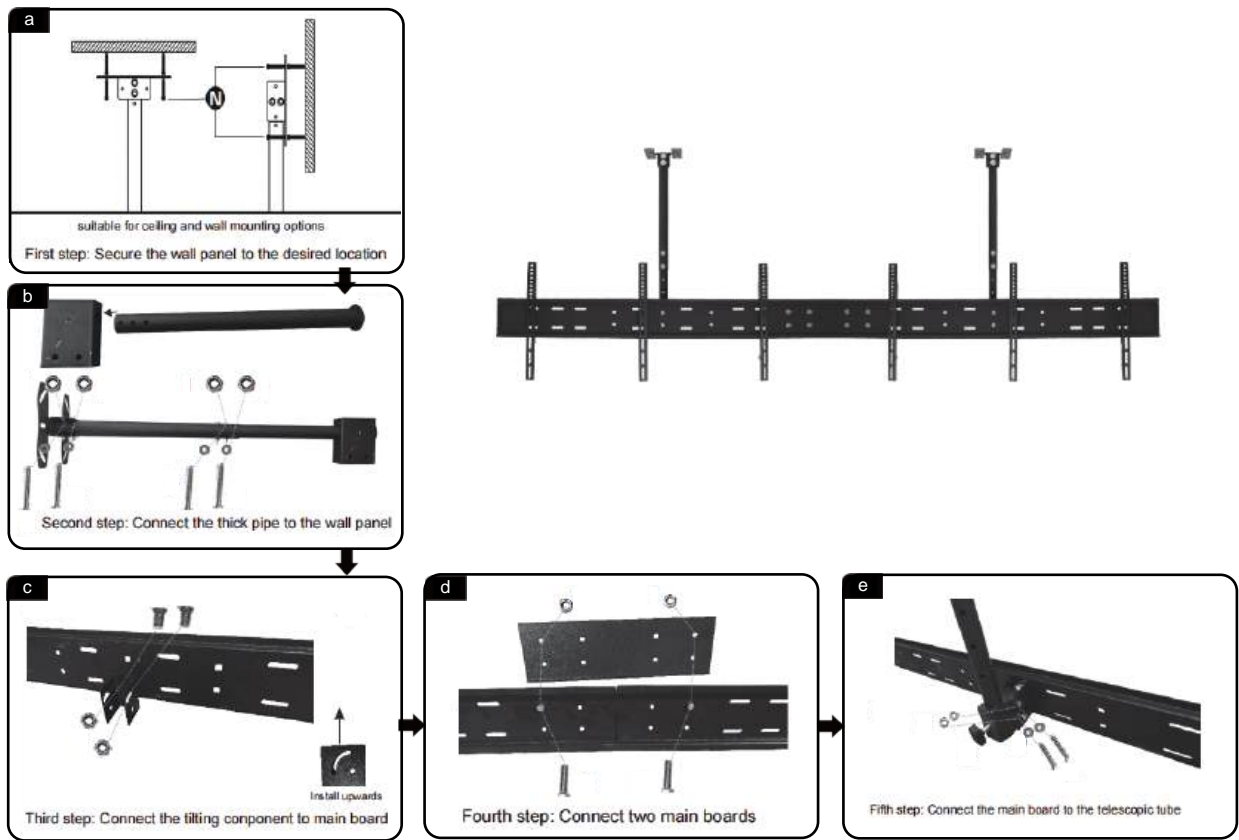


Figure 1

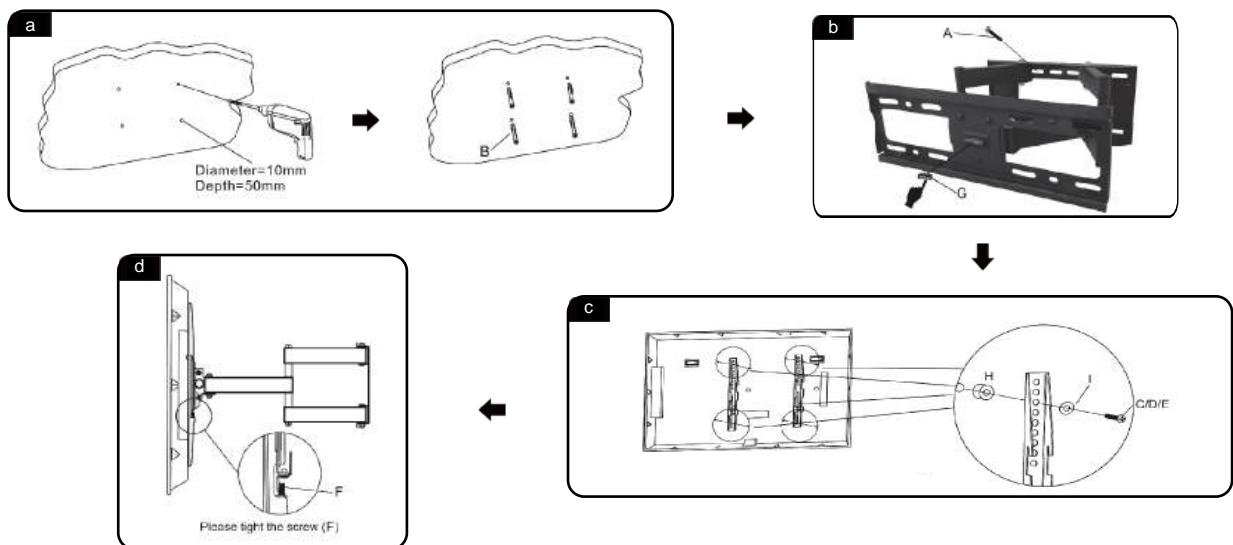
5.Bracket Mounting(Single-screen Mounting Bracket;Multi-screen Mounting Bracket;Adjustable bracket;Angle TV wall Mount) .



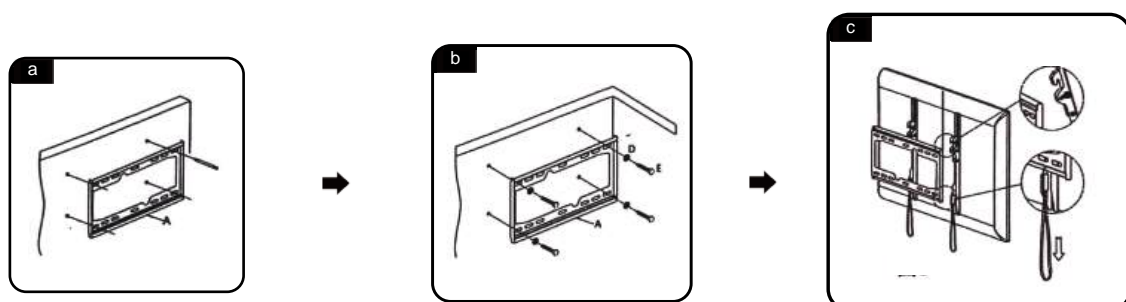
Single-screen Mounting Bracket



Multi-screen Mounting Bracket



Adjustable bracket



Angle TV wall Mount

VI.Packaging

See Annex for details.

Please note the following:

1. Intellectual Property Statement: The hardware design and software programming of this product are protected by copyright. Unauthorized copying of this product and the contents of the Instruction Manual will be investigated with corresponding legal liability.
2. This is a Grade A product. In a standard living environment, this product may cause certain radio interference. In this case, the user may be required to take practical measures against such interference.
3. The content in this Instruction Manual is for reference only and does not constitute any form of commitment.
4. SHOWTOP reserves the right to improve and change the product design without prior notice.

Warning

In a standard living environment, this product may cause certain radio interference.
In this case, the user may be required to take practical measures against such Interference.

VII. Test Report

Test Report					
Product Model			AI49W	Purpose	To ensure the reliability and practicality of the product
Prepared by			Shenzhen SHOWTOP Technology Co., Ltd		
Scope of Application			SHOWTOP Commercial Advertising Machine		
S/N	Test Item	Quantity	Test Requirement/Standards	Test Steps	Test Results
1	Drop impact test	1	Product weight: 9Kg≤M≤20Kg Drop height: 30CM for corners/edges, 40CM for top, 40CM for other sides Drop order: 1 corner, 3 edges, 6 sides	1. Prepare qualified and verified test equipment and drop test bench; 2. Perform operations on the packaged device according to the experimental requirements; 3. After the experiment, unpack the device and check whether there is any abnormality in appearance, and check whether it is operating normally after powering on. If there is no abnormality, the test is passed and ended.	PASS
2	High and low temperature test	1	Test environment: 1. 45 ±2℃ 50%RH 4h 2. 60±2℃ 30%RH 4h 3. -25±2℃ ORH 4h 4. - 10±2℃ ORH 4h Test each of the above parameters for more than 4 hours after powering on, check whether the device is operating normally. Test each parameter for more than 4 hours after powering off then powering on, and check whether the device is operating normally	1. Prepare qualified and verified thermostatic chamber and set the parameters according to the experimental requirements/standards; 2. Place the device into the experimental equipment for testing according to the experimental requirements/standards; 3. After the experiment, check whether there is any abnormality in the equipment. If there is no abnormality, the test is passed and ended.	PASS
3	Electrical Performance test	1	Test condition 1) The product is not damaged after aging for 30 minutes at ±20% of the rated operating voltage; 2) Adjust the voltage by ±15% of the rated operating voltage by 20V each time (increasing or decreasing the voltage), and check whether there are any abnormalities in the image and sound	1. Prepare qualified and verified voltage regulator, and set parameters according to the experimental requirements/standards; 2. A professional test technician conducts the test according to the test requirements; 3. After the test, check whether there is any abnormality in the equipment. If there is no abnormality, the test is passed and ended.	PASS
4	Display test	1	1. Signal source: The device works for screen projection and playback when connected to the network and WIFI; 2. Software version: Latest version; 3. Voltage: Rated Operating voltage; 4. Load: Two speakers working simultaneously, with other parameters set to factory settings; 5. Test environment: Tested at a temperature of 40±2℃ and humidity of 28%RH for more than 12 hours	1. A professional test technician tests the machine for more than 12 hours according to the experimental requirements/standards; Check whether the WIFI and network connections are operating normally; 2. Check whether the remote control is operating normally ; 3. Check whether the software version is the latest version; 4. After the experiment, check whether there is any abnormality in the equipment. If there is no abnormality, the test is passed and ended.	PASS

VII. Test Report

S/N	Test Item	Quantity	Test Requirement/Standards	Test Steps	Test Results
5	Structural component inspection	1	Metal parts should be free from rust and other mechanical damage. The color of the surface coating should not have any obvious color discrepancy. The operating switches and buttons should work flexibly and reliably, and parts should be fastened and not loose. There should be no obvious installation gaps. The complete device should have sufficient mechanical stability	1.A professional test technician inspects the hardware and structural parts of the device according to the inspection requirements/standards; 2.During the inspection, the device should not have any problems other than the standards; inspection ended	PASS
6	Packaging inspection	1	The surface of the packaging should be clean and tidy without obvious defects, such as concave and convex distortions, scratches, cracks, deformations and burrs. The surface coating should not blister, crack, or fall off. The text, graphics and symbols on the outer box, and in the Instruction Manual, etc. should be clear and feature correct indications	1. Before packaging the device, a professional test technician should inspect the surface, outer box, Instruction Manual, etc. of the device according to the inspection requirements/standards; 2. During the inspection, the device should not have any problems other than the standards; inspection ended.	PASS

Note: The above test requirements/standards are the internal test standards of the commercial display advertising machine industry

FCC Caution.

§ 15.19 Labelling requirements.

This device complies with part 15 of the FCC Rules. Operation is subject to the following two conditions: (1) This device may not cause harmful interference, and (2) this device must accept any interference received, including interference that may cause undesired operation.

§ 15.21 Information to user.

Any Changes or modifications not expressly approved by the party responsible for compliance could void the user's authority to operate the equipment.

§ 15.105 Information to the user.

Note: This equipment has been tested and found to comply with the limits for a Class B digital device, pursuant to part 15 of the FCC Rules. These limits are designed to provide reasonable protection against harmful interference in a residential installation. This equipment generates uses and can radiate radio frequency energy and, if not installed and used in accordance with the instructions, may cause harmful interference to radio communications. However, there is no guarantee that interference will not occur in a particular installation. If this equipment does cause harmful interference to radio or television reception, which can be determined by turning the equipment off and on, the user is encouraged to try to correct the interference by one or more of the following measures:

- Reorient or relocate the receiving antenna.
- Increase the separation between the equipment and receiver.
- Connect the equipment into an outlet on a circuit different from that to which the receiver is connected.
- Consult the dealer or an experienced radio/TV technician for help.

RF warning for Mobile device:

This equipment complies with FCC radiation exposure limits set forth for an uncontrolled environment. This equipment should be installed and operated with minimum distance 20cm between the radiator & your body.

.....