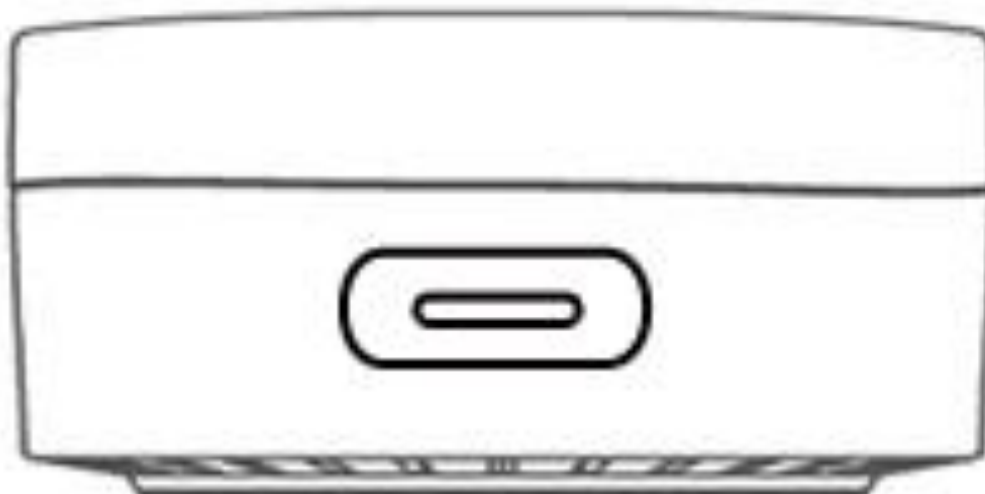


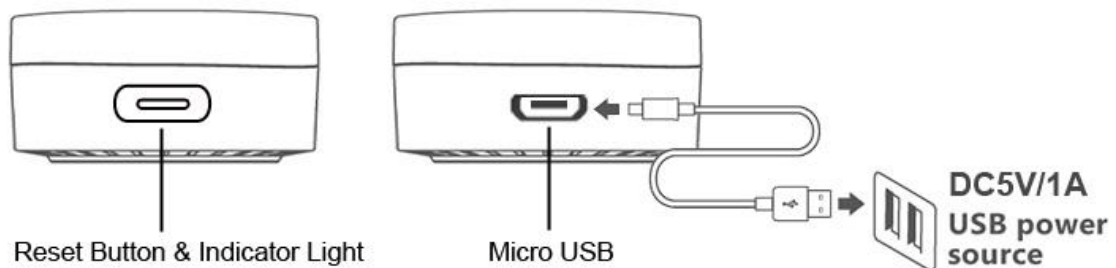
Smart Sensor Remote Control User Manual



Product Presentation

※ Please use DC5V/1A USB power source.

- IR Remote: The indicator turns on automatically after power is connected.
- IR+RF Remote: After power is connected, long press the reset button for 5s to power on(skip this step if indicator is on).



Product Features

This smart remote control makes the traditional home appliances smart. You can use your cellphone to control the IR/RF home appliances remotely, set a schedule for them, and voice control them by working with Alexa/Google Assistant/Siri.

- IR Control Device Type: TV, STB(Set-Top-Box), TV Box, Air Conditioner, Fan, Light, Audio, Projector, DVD, Camera, Heater, Purifier, etc
- RF Control Devices Type: Curtains, Roller Shutters, Window Pusher, Hanger, Projection Screen, Garage Door, Retractable Door, RF Switch, etc.

Product Specifications

Model No.	CS-SSRC-IRC
Power Input	DC 5V/1A
Internet Connection	Wi-Fi IEEE 802.11 b/g/n 2.4GHz
Main Function	WiFi enabled, IR/RF control, App remote control, DIY(IR/RF learning), Schedule, Third-party voice control, etc.
App Name	Tuya Smart / Smart Life
Mobile OS Required	Android 4.4/iOS 9.0 or Later
Operating Temperature	-20~60°C
Material	PC
Dimensions	80*80*40mm

Indicator Light

- * Indicator blinks(rapidly or slowly): Networking setting mode
- * Duration of blinking: several minutes, then it stops blinking and lights up
- * Online: Indicator light off
- * Online, Emitting IR/RF signal: Indicator light flashes once
- * Offline: Indicator lights up
- * DIY Mode: Indicator lights up
- * Receive IR/RF signal: Indicator light off

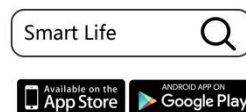
【RESET】 Long-press(press and hold) the reset button(indicator) for 5 seconds to reset

Network Setting

1. Install App & Create an Account

Scan the QR code, or search "Tuya Smart" or "Smart Life" in App Store or Google Play to install it. Sign up an account and then log in.

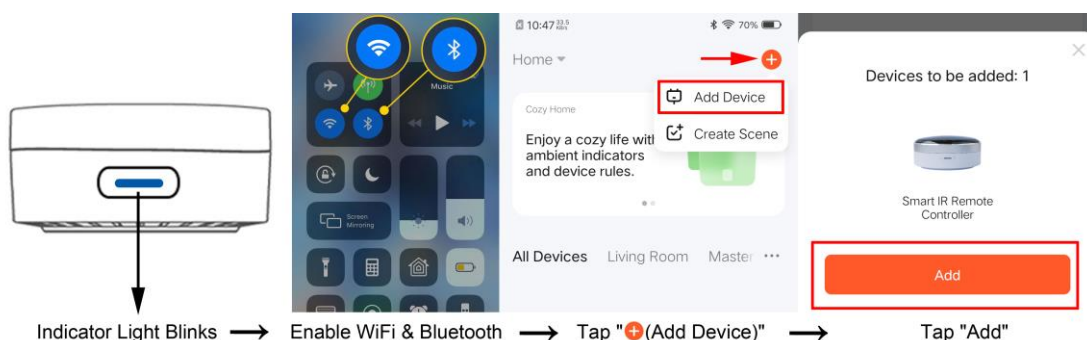
▼ Choose either one App to install: Tuya Smart or Smart Life. No need to install both APPs.



2. Add Device

Make sure the indicator light is in network setting mode(indicator light blinks rapidly or slowly, both ok). If the light doesn't blink, please press and hold the reset button for 5s to reset.

◆ Confirm the indicator light is blinking, enable cellphone Wi-Fi(2.4GHz) and Bluetooth, open App and wait for several seconds, App will pop-up a dialog box, then tap "Add" icon to finish. If the dialog box doesn't show up, please tap "Add Device" in App, or tap "+"→ "Add Device" in sequence.

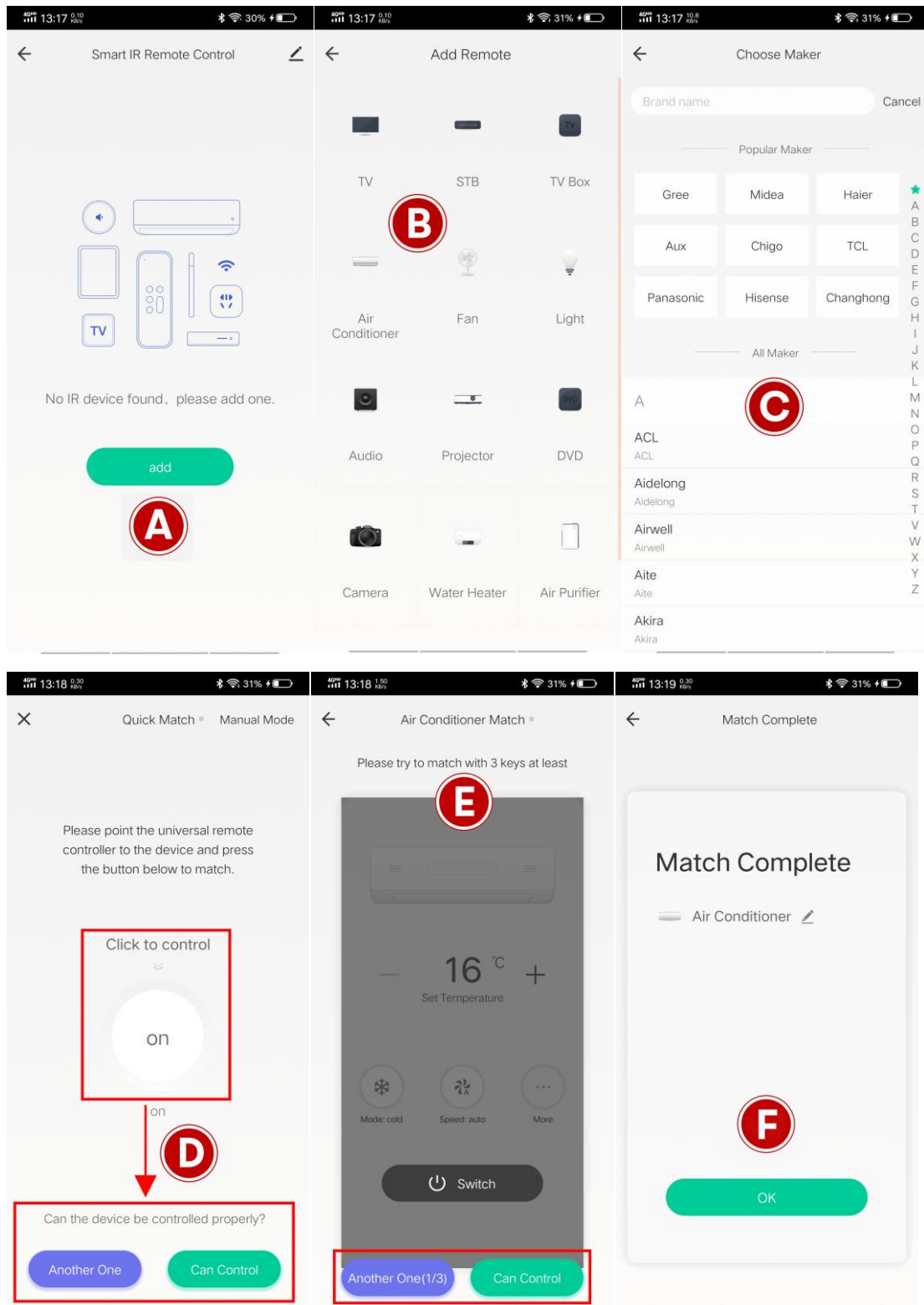


※ Notes/Tips:

- Press and hold reset button for 5s if the indicator is not blinking.
- The smart remote control can only connect 2.4GHz Wi-Fi network, not compatible with 5GHz Wi-Fi.
- If adding device fails, please try again; or add device manually: Tap **"+(Add Device)"** → **"Others"** → **"Universal Remote Control(Wi-Fi+BLE)"** to add.

3. Add IR Remote

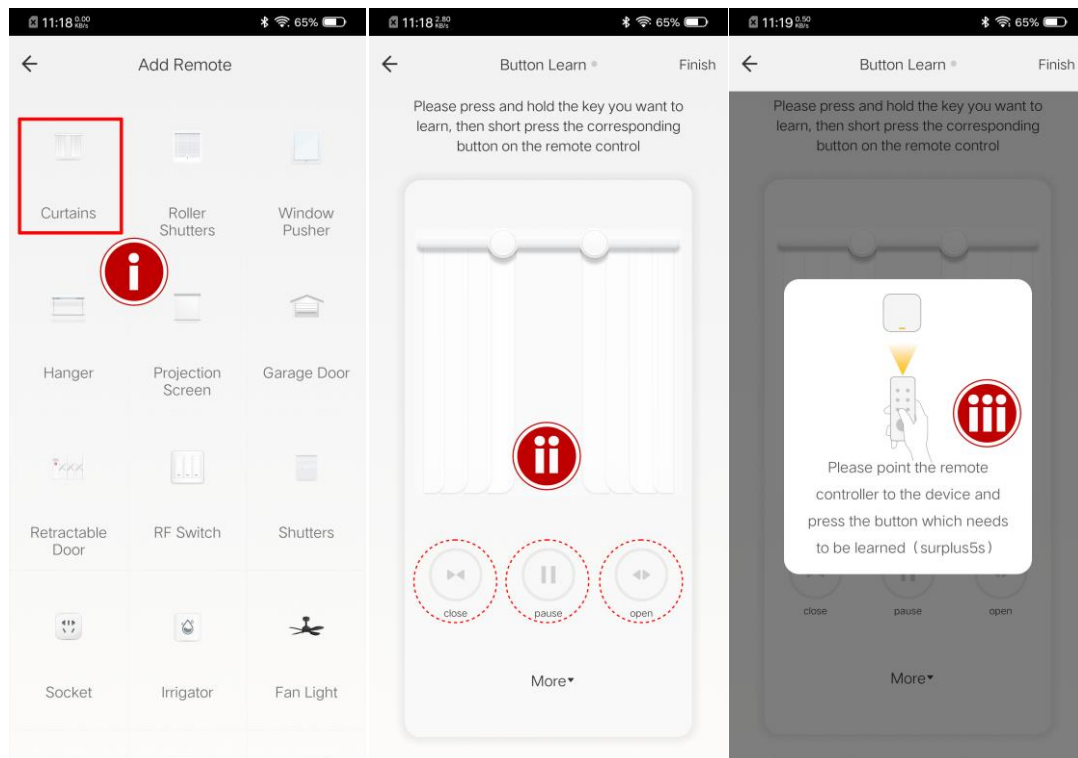
→Put the smart remote control in front of home appliances, make them in the same room, straight-line distance less than 8m. Tap "add" icon, select the device type(take Air Conditioner as an example), then find and tap the brand in the list. On the pop-up page, click the button to match, if it controls your device properly, click "Can Control" and continue to test the next buttons. If the button cannot control your device, click "Another One". After several attempts, in most cases, App will find a match in database. Then click "Can Control" to finish the setup.



4. Add RF Remote

Tap the device type(take Curtains as an example), next press and hold the key you want to learn, after the dialog box pops up, point the original remote control at the smart remote control, then short press the corresponding

button on the original remote control. After all buttons are learned, tap "Finish" at the top right corner.



★ DIY(Customize Learn): If your device type or brand is not in the list, or no match in database after all attempts, you can use "DIY" function to learn(copy) the IR/RF signal from the original remote control.

Using Tips

- Please place it on the wide-open table-board where is within Wi-Fi coverage.
- The infrared rays can't pass through the wall and most of obstacles. If you need to use it to control the IR home appliances, please make sure the smart remote control and the IR devices in the same room, their linear distance should be no more than 8m, and not blocked by other objects.

Third-Party Voice Control:

☆ Works with Amazon Alexa, Google Assistant, Alice and Siri(iOS 12.0 or later), etc. You can use them to voice control the home appliance. For example: Alexa, turn on TV; Hi Google, set air conditioner temperature to 25 degrees.

▽ How to enable Google Assistant and Alexa voice control?

1. Connect your Google Home/Amazon Echo to internet(Wi-Fi);
2. Connect smart remote control to Wi-Fi(Add device in Tuya Smart/Smart

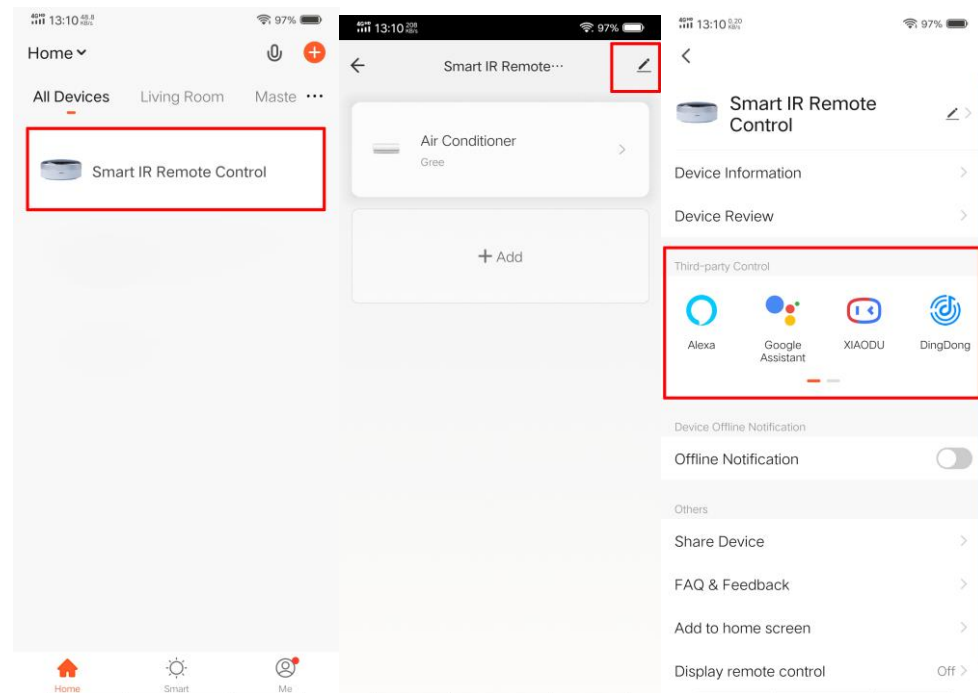
Life App);

3. Add remote in Tuya Smart/Smart Life App;

4. Link(Bind) Tuya Smart/Smart Life

App Account to Google Assistant/Alexa App(see the steps in the following pictures);

5. Let Google Home/Amazon Echo discover device.



☆ Siri Voice Control

You can speak to Siri by voice commands to enable the scene(Tap-To-Run) to control the home appliance. System Requirement: iOS 12.0 or later.

→Open Tuya Smart App, tap "+"(Create Scene) at the top right corner,

choose "Tap-to-Run" → Add task(choose "Run the device") → Choose the

device that you want to control → Select Function and then tap "Next" →

tap "Save", then a "Tap-to-Run" is created successfully. Then tap "Add to Siri", in the "Siri Shortcut", choose the scene(Tap-To-Run) to add it. Next input a custom phrase and tap "Add to Siri", then setup is done. Every time when you say this phrase to Siri, Siri will tell Tuya Smart App to run this shortcut to control the device.

This device complies with part 15 of the FCC Rules. Operation is subject to the following two conditions: (1) This device may not cause harmful interference, and (2) this device must accept any interference received, including interference that may cause undesired operation.

Any Changes or modifications not expressly approved by the party responsible for compliance could void the user's authority to operate the equipment.

Note: This equipment has been tested and found to comply with the limits for a Class B digital device, pursuant to part 15 of the FCC Rules. These limits are designed to provide reasonable protection against harmful interference in a residential installation. This equipment generates uses and can radiate radio frequency energy and, if not installed and used in accordance with the instructions, may cause harmful interference to radio communications. However, there is no guarantee that interference will not occur in a particular installation. If this equipment does cause harmful interference to radio or television reception, which can be determined by turning the equipment off and on, the user is encouraged to try to correct the interference by one or more of the following measures:

- Reorient or relocate the receiving antenna.
- Increase the separation between the equipment and receiver.
- Connect the equipment into an outlet on a circuit different from that to which the receiver is connected.
- Consult the dealer or an experienced radio/TV technician for help.
- This equipment complies with FCC radiation exposure limits set forth for an uncontrolled environment. This equipment should be installed and operated with minimum distance 20cm between the radiator & your body.