

# 行车记录仪使用说明书

Instructions for the Use of Traffic Recorder

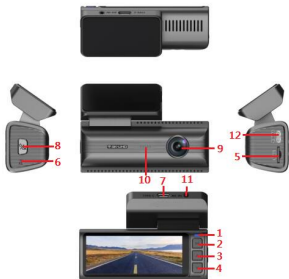


產品特性:

- 单路 4K ，双路：前 4K 后 1080P
- 档案与档案之间无缝不漏秒
- 2.86 英寸屏
- 高清广角摄像头
- 视频文件格式：MP4
- 内置麦克风（喇叭）
- 支持边充电边录像功能
- 支持大容量 TF（micro SD）内存卡
- 支持汽车启动时脉冲过压保护功能
- 内置 WIFI 功能
- 支持后拉摄像头功能（选配）
- 一键紧急数据保护功能
- G-sensor 撞击感应锁档功能
- 内置 GPS

## 产品说明

### ● 产品结构



- |           |           |             |             |
|-----------|-----------|-------------|-------------|
| 1) 工作指示灯  | 2) 菜单/模式键 | 3) 向上键      | 4) 向下键      |
| 5) TF 卡插槽 | 6) 复位孔    | 7) 电源接口①    | 8) 电源键/OK 键 |
| 9) 摄像头    | 10) 喇叭    | 11) 后拉摄像头接口 | 12) 电源接口②   |

### 一：按键及功能说明

#### 1) 工作指示灯

开机后蓝色指示灯点亮，录像时蓝色指示灯闪烁；

#### 2) 菜单键/模式键

短按此键调出功能设置菜单；连续短按此键可以在各设置间相互切换；

录像过程中短按此键会对当前视频文件加锁，保存为不可删除文件

长按此键在摄像/拍照/回放之间相互切换；

#### 3) 向上键

菜单选项中向上选择功能键；

回放状态下此键为快进功能；

录像状态下此键为一键抓拍功能

#### 4) 向下键

菜单选项中向下选择功能键；

回放状态下此键为快退功能

录像过程中短按打开或关闭录音功能；

待机状态下长按打开或关闭 WiFi 功能

#### 5) TF 卡插槽

存储卡插槽

#### 6) 复位孔

死机复位按键

7) USB 电源接口①

用于连接外接车充电源给电池充电或提供工作电源；

8) 电源键/OK 键

短按开机长按关机；

录像和拍照确认键，摄像模式下，短按此键开始录像，再次短按停止录像；拍照模式下短按此键拍摄照片；菜单模式下为确认键

9) 摄像头

取景窗口

10) 喇叭

播放视频或者有声文件的扩音孔，操作音提醒

11) 后拉摄像头接口

后视镜头视频输入口

12) USB 电源接口②

用于连接外接降压线或车充电源给电池充电或提供工作电源；

数据接口：①存储器；②PC 摄像头

## 二：特别功能说明

1) G-sensor 功能

当重力加速 ( $1g=9.80 \text{ 米/秒}^2$ ) 时，机器会自动将事故发生时的视频自动锁档并保存为不可删除文件；

G-sensor 重力感应可以在菜单中进行选择，本机设置有：关 低 中 高 4 档灵敏度选项，出厂默认为中；

2) 一键锁功能

录像过程中短按菜单键，机器会将当前视频加锁保存为不可删除文件，屏幕上会显示此  图标；

3) 自动开/关机

支持车载电源汽车启动后自动开机录像，汽车熄火后，自动保存并自动关机；

4) WIFI 功能

在待机状态下长按向下键打开或关闭 WIFI 功能，通过手机专用 APP 即可连接并对本机进行手机操作。

或待机模式时按功能按菜单键，进入菜单选项，选择 WIFI 功能选项并短按 OK 键确认，进入 WIFI 模式，如需要退出 WIFI 模式再次进入菜单选项里面关闭此功能就可以退出

## 三：应用程序安装和 WIFI 连接说明：

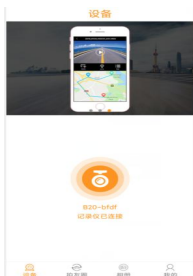
1) Android 智能机请上软件商城直接搜索 Roadcam 下载安装，IOS 智能机或者 iPad 请上 Apple Store 直接搜索 Roadcam 下载安装。

2) 在待机模式时按菜单键，进入菜单选项，选择 WIFI 功能选项并短按 OK 键确认，进入 WIFI 模式，，屏上会显示 SSID 热点名称及 PWA2 密码

3) 打开手机上的 WiFi 连接，手机会自动搜索 WiFi 热点，搜到 SSID 热点名称为 B20-\*\*\*\*输入密码 12345678 (初始密码默认为：12345678) 点击连接；

4) 连上 WiFi 后就可以点开事先下载好安装好的 APP (Roadcam) 程序。

5) 打开 APP 程序后，点击下面的黄色的摄像头图标进行连接如下图：



6) 连接成功后将看到记录仪的实时画面如下图:



1. 记录仪功能设置    2. 断开设备连接    3. 录像时间    4. 图片回放  
5. 摄像    6. 视频回放    7. 拍照    8. 摄像头切换

#### 四：APP 界面图标使用说明：

1. 记录仪功能设置图标：点击进入记录仪里面设置各项菜单功能
2. 断开设备连接：点击可以断开 APP 与设备连接

3. 录像时间：录像的显示时间
4. 图片回放：点击进入可在线浏览拍照图片，并可下载到手机进行分享
5. 摄像：点击可以进行录像或停止
6. 视频回放：点击进入可在线浏览视频，并可下载到手机进行分享
7. 拍照：点击可以进行拍照
8. 摄像头切换：点击可切换前后摄像头的画面显示


## 五：摄像/拍照基本操作说明：

### 1) 开机与关机

短按电源键开机，电源指示灯会在开机时亮起；

开机后长按电源键关机，此灯熄灭；

### 2) 摄像模式

长按菜单/模式键，切换到摄像模式，短按 OK 键开始摄像，录像图标  会开始闪动，同时蓝色指示灯开始闪烁，进入录像工作模式；

### 3) 拍照模式

长按菜单/模式键，切换到拍照模式，短按 OK 键拍照，拍照时屏幕闪烁一次，表示拍照完成。

### 4) 视频/照片回放

长按菜单/模式键，切换到回放模式，屏幕左上角显示回放图标；

短按向上键可以向上选择文件；

短按向下键可以向下选择文件；

短按 OK 键播放选择的视频文件；

### 5) 菜单设置

短按菜单/模式键调出设定菜单；

通过短按向上或向下键，可以在各设置项中循环上下选择；

选择需要更改的设置项，通过短按 OK 键进入更改；

### 6) 退出设定菜单

短按菜单/模式键退出设置状态；

## 六：时间设置

(1) 通过连续短按菜单/模式键进入设置项，短按向下键选择日期设置，短按 OK 键进入，短按 OK 键可以在年/月/日/时/分/秒之间相互切换，通过向上键/向下键调整需要数值，短按 OK 键确认修改，再短按菜单模式键退出时间设置。

(2) 当机器连接 WiFi 后，时间会自动更新

**备注：**当使用此产品因操作不当引起当机现象，可按复位键后再开机，即可恢复正常。

## 七：安装指南

1. 关闭汽车发动机。

2. 将 TF 卡插入记录仪卡槽中。

【注意】请使用高速 TF 卡（C10 以上）

3. 将记录仪固定于汽车的前挡风玻璃上。

4. 将车载充电器插入汽车点烟器中。

**注意：**如用降压线的把 BAT+/点火 ACC/GND- 3 个接口接到中控对应的位置

5. 用充电延长线将记录仪的 USB 接口和车载充电器连接起来。

【注意】布线时可充电延长线沿汽车挡风玻璃边缘敷设。

6. 将后置摄像头安装在车辆后部，安装时注意方向。布线可沿车辆顶棚敷设。安装完成后将后拉插头接入记录仪后拉接口。

7. 调整镜头位置，确保镜头与地面保持水平。

8. 发动引擎，检查机器是否已安装正确。

【注意】当机器安装正确，系统工作指示灯点亮；机器启动进入记录状态，录像指示灯闪烁。请注意检查显示屏上的画面是否正常。

#### 八：后摄像头安装走线示意图（选配）

两种安装方式选择

① 把它固定在后面的挡风玻璃上



② 或安装在汽车牌照上



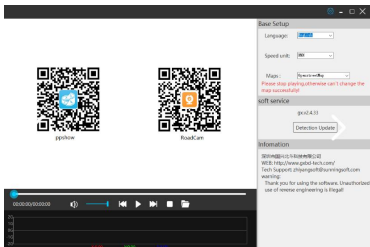
#### 九：GPS 轨迹地图播放器下载

1. PC 版进入网站 <http://www.sunningsoft.com/en/pcgps.html> 下载；

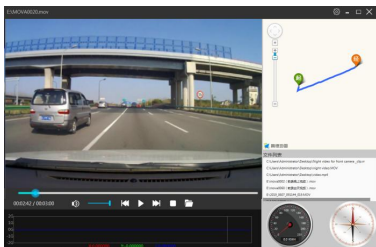
备注：系统要求：1 windows 7/8/10 操作系统，64 位，32 位；（Windows xp 不支持）

2. Mac OS 系统直接在商城搜索：GXplayer 下载安装。

下载安装完，打开播放器出现如下界面：



3. 安装后打开软件，打开需要播放的视频文件，或者将文件直接拖拽到播放器栏，播放后即可显示出 GPS 轨迹：



## 十：产品规格

产品特点	高清摄像头，高清录像
G-sensor	内置（车子意外情况下紧急保存，不被删除）
液晶显示屏尺寸	2.86 寸
镜头	140 度广角镜头
语言	支持多国语言
文件格式	MP4
录像分辨率	4K/ 2K/ 1080P



视频编码格式	4K/H.265      2K/H.264      1080P/H.264
随车开关机	支持汽车打火开机，熄火延时关机
年月日分	支持
存储卡	TF（最大支持 128GB）
照相模式	1200 万
照片格式	JPEG
麦克风	支持
<b>WIFI 功能</b>	<b>支持手机连接</b>
后拉摄像头	支持（选配）
GPS	支持
电源接口	5V/2.5A

#### **十一、疑难解答：**

**在正常操作情况下，如果产品出现问题，请参考一下方法解决：**

##### **不能拍照、摄像**

检查TF卡是否有足够的空间、是否锁住。

##### **录像时，会自动停止**

由于高清视频数据巨大，请使用与SDHC兼容的高速TF卡，高速TF卡会有C10的标识。

##### **重播图片和视频时，出现“档案错误”提示**

TF卡存储资料时发生错误，造成档案不全，请使用摄像机“格式化”功能，重新格式化TF卡。

##### **拍出的影像雾蒙蒙一片**

请检查镜头是否有脏物、手指印；进行拍摄前，使用镜头纸擦拭镜头。

##### **拍摄天空、水面等场景时，影像非常黑**

在大的反差场景中会影响到摄像机的自动曝光功能，可以通过调整机器设置菜单中的“EV”值进行修正。

##### **在阴天、室内光源下，颜色表现不够完美**

请检查机器“白平衡”功能时候设置为自动。

##### **图像中有横条纹干扰**

这个是由于设置了错误的“光源频率”而产生的，请根据当地的供电频率，设置为“50Hz”或者“60Hz”。

##### **当机**

当机后请短按复位键进行恢复重启。

**Product Features:**

- Single way 4K, double way: front 2K, back 1080p
- Seamless seconds between records and records
- 2.86 inch screen
- High Definition Wide Angle Camera
- Video file format:MP4
- Built-in microphone (speaker)
- Video Recording Function while Supporting Charging
- Supporting High Capacity TF (Micro SD) Memory Card
- Supporting Mobile Detection Video Recording Function
- Supporting Pulse Overvoltage Protection Function in Automobile Start-up
- Built-in WIFI function
- One key emergency data protection function
- G-sensor Impact Induction Lock Function
- Integrated GPS

## Product description

### ● Product structure



- 1) Work indicator light    2) Menu/Mode Key    3) Up key    4) Down arrow  
5) TF card slot    6) Reset hole    7) Power interface ①    8) Power key/OK key  
9) Camera    10) Horn    11) Pull back camera interface    12) Power interface ②

### —: Key and function description

#### 1) Work indicator light

After turning on, the blue indicator light will light up, and the blue indicator light will flash during recording;

#### 2) Menu/Mode key

Short press this key to access the function settings menu; Press this key continuously and briefly to switch between various settings;

Short press this key during the recording process to lock the current video file and save it as a non removable file

Long press this button to switch between camera/camera/playback;

#### 3) Up key

Select the function key up from the menu options;

In playback mode, this key is a fast forward function;

This button is a one click capture function in recording mode

#### 4) Down arrow

Select the function key down from the menu options;

This key is a fast rewind function in playback mode

Short press to turn on or off the recording function during the recording process;

Long press to turn on or off WiFi function in standby mode

5) TF card slot

Memory card slot

6) Reset hole

Crash reset button

7) Power interface ①

Used to connect external vehicle charging power sources to charge batteries or provide working power;

8) Power key/OK key

Short press to turn on and long press to turn off;

Record and take photos confirmation keys. In camera mode, short press this key to start recording, and then short press again to stop recording; Short press this button in photography mode to take a photo; Confirm key in menu mode

9) Camera

Viewfinder window

10) Horn

Play video or audio files through the speaker hole, and use sound prompts

11) Pull back camera interface

Rear view camera video input port

12) power interface ②

Used to connect external step-down cables or vehicle charging power sources to charge batteries or provide working power;

Data interface: ① Memory; ② PC camera

## **二: Special Function Description**

1)G-sensor function

2)When gravity acceleration ( $1g = 9.80 \text{ M} / \text{S}^2$ ), the machine will automatically lock the video file when the accident occurs and save it as a non erasable file; G-sensor gravity sensor can be selected from the menu. This machine is set with the option of turning off the sensitivity of 4 gears of medium and high. The factory default is medium;

2) One key lock function

In the process of recording, press the menu key briefly, the machine will save the current video as a file that cannot be deleted, and this icon will be displayed on the screen;

3) Auto on / off

Support the car power, auto start video after the car starts, auto save and auto shut down after the car flameout;

4) WiFi function

In standby mode, long press the down button to turn on or off the WiFi function. You can connect and operate your phone through a dedicated mobile app.

Or in standby mode, press the function key to enter the menu options, select the WIFI function option, and briefly press the OK key to confirm. To enter the WIFI mode, if you need to exit the WiFi mode and enter the menu options again, turn off this function to exit

## **三: Application installation and WiFi connection instructions:**

1) For Android smart machine, please go to the software store to search roadcam directly to download and install. For IOS smart machine or iPad, please go to the software store

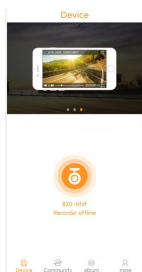
Apple store directly searches roadcam to download and install.

2) When in standby mode, press the menu key to enter the menu options, select the WIFI function option, and briefly press the OK key to confirm. When entering WIFI mode, the screen will display the SSID hotspot name and PWA2 password

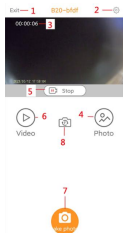
3) Open the WiFi connection on the mobile phone, and the mobile phone will automatically search for WiFi hotspots. The name of SSID hotspots is B20-\*\*\*\*

4) After connecting WiFi, you can click to open the app (roadcam) program downloaded and installed in advance.

5) After opening the app, click the Yellow camera icon below to connect, as shown in the figure below:



6) After successful connection, you will see the real-time picture of the recorder as shown in the figure below:



1. Recorder function setting
2. Disconnect the device
3. Recording time
4. Picture playback
5. Camera
6. Video playback
7. photograph
8. Camera switching

#### **四: App interface icon instructions:**

1. Recorder function setting Icon: Click to enter the recorder to set various menu functions
2. Disconnect the device: Click to disconnect the app from the device
3. Recording time: the display time of the recording
4. Picture playback: Click to view the pictures online and download them to the mobile phone for sharing
5. Camera: Click to record or stop
6. Video playback: Click to view the video online and download it to the mobile phone for sharing
7. photographe: Click to take a picture
8. Camera switching: Click to switch the display of the front and rear cameras


#### **五: Basic operation instructions for camera / photo taking:**

##### **1) Start and shut down**

Press the power button to start the power supply, and the power indicator will be on when it is started;

Press the power key to turn off after power on, and the light will go out;

##### **2) Camera mode**

Press menu / mode key for a long time to switch to camera mode, press OK key to start shooting, video icon  will start flashing, and blue indicator light starts flashing to enter video working mode;

##### **3) Photo mode**

Press menu / mode key for a long time to switch to photo mode, press OK key for photo taking, and the screen flashes once during taking photos, indicating that the photo is completed.

##### **4) Video / photo playback**

Press menu / mode key for a long time to switch to playback mode, and the playback icon is displayed in the upper left corner of the screen;

Press up to select the file up;

Press the down key to select the file down;

Press OK to play the selected video file;

#### 5) Menu settings

Press menu / mode key to call up the setting menu;

By pressing up or down key briefly, you can cycle up and down selection in each setting item;

Select the setting item to change, and press OK to enter the change;

#### 6) Exit the setup menu

Press menu / mode key to exit the setting status;

### 六: Time setting

(1) Press menu / mode key to enter the setting item continuously, press down key to select date setting, press OK key to enter, and short press OK key to switch between year / month / day / hour / minute / second. Adjust the required value by up / down key, confirm modification by short press OK key, and then press menu mode key to exit time setting.

(2) When the machine is connected to WiFi, the time will be automatically updated

Note: when the product is used, the machine will be on due to improper operation. Press reset key to start up again, and then it can be restored to normal.

### 七: Installation guide

1. Turn off the car engine.

2. Insert the TF card into the recorder card slot.

[Note] Please use a high-speed TF card (C10 or above)

3. Fix the recorder on the front windshield of the car.

4. Insert the car charger into the car lighter.

【 Note 】: If using a step-down wire, connect the BAT+/ignition ACC/GND -3 interfaces to the corresponding positions in the central control

5. Connect the USB interface of the recorder to the car charger using a charging extension cable.

【 Note 】 When wiring, the charging extension cable can be laid along the edge of the car windshield.

6. Install the rear camera at the rear of the vehicle, paying attention to the direction during installation. The wiring can be laid along the roof of the vehicle. After installation, connect the back pull plug to the back pull interface of the recorder.

7. Adjust the lens position to ensure that the lens is level with the ground.

8. Start the engine and check if the machine is installed correctly.

【 Note 】 When the machine is installed correctly, the system operation indicator light will light up; The machine starts and enters the recording state, and the recording indicator light flashes. Please pay attention to checking if the image on the display screen is normal.

### 八: Installation and wiring diagram of rear camera (matching)

### Two installation for option

① Fix it on backside windshield



② Or, install it on car license plate



### 九: GPS track map player download (matching)

1. PC version enters website <http://www.sunningsoft.com/en/pcgps.html> Download

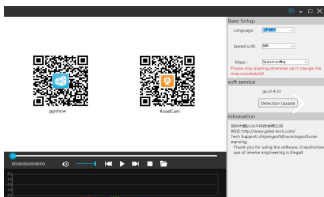
Remarks: system requirements: 1 windows 7/8/10 operating system, 64 bits, 32 bits;

(windows XP does not support)

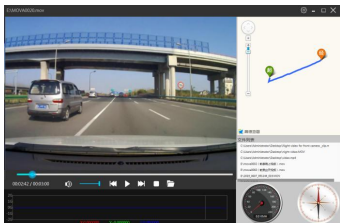
2. Mac OS system directly in the mall search: GXplayer download and install.

After downloading and installing, the following interface appears when opening the player:





3. Open the software after installation, open the video file that needs to be played, or drag the file directly to the player bar, then display the GPS track after playing.



### ✦: Product Specification

Product characteristics	High Definition Camera, High Definition Video
G-sensor	Built-in (car emergency save, not deleted)
LCD Display Size	2.86 inch
Camera lens	140 degree wide angle lens
language	Support for Multilingualism

file format	MP4
Video Resolution	4K/ 2K/ 1080P
Video encoding format	4K/H. 265      2K/H. 264      1080P/H. 264
On-board switch	Supporting automobile ignition start, extinguishing delay shutdown
Year, month and day	Support
Memory card	TF (maximum support 128GB)
Photo Mode	12 million
Photo format	JPEG
Microphone	Support
WIFI function	Supporting Mobile Connection
Back-pull camera	Support (matching)
GPS	Support
Power Interface	5V/ 2.5A

### **十一: Trouble shooting:**

If you experience problems with operation, please try the following:

Check if the TF card has enough storage or if it is locked.

Automatically stops when recording:

Use compatible high-speed TF card with SDHC. A large amount of HD video data requires a high-speed TF card, type C10.

There are file errors when replaying a photo or video

Incomplete files due to TF card storage error. Use formatting function to format your card.

Unclear video:

Check if there is any dirt or fingerprints on the lens. Use lens paper to clear the camera.

Black image when recording sky or water scene.

Scenes with a high contrast will influence the automatic exposure function of camera, Adjust EV in setting mode to correct.

Colour is not perfect on cloudy day and outdoor light.

Set the white balance function to automatic.

Cross stripe interference in image

This is due to the wrong light frequency. Please set it to "50 Hz" or "60 Hz" according to the local power supply frequency.

Crash

Restart by pressing the reset button after crash.

FCC Statement

This device complies with Part 15 of the FCC Rules. Operation is subject to the following two conditions:

(1) This device may not cause harmful interference.

(2) This device must accept any interference received, including interference that may cause undesired operation.

Caution: Any changes or modifications not expressly approved by the party

responsible for compliance could void the user's authority to operate the equipment.

Note: This equipment has been tested and found to comply with the limits for a Class B digital device under Part 15 of the FCC Rules. These limits are designed to protect reasonably against harmful interference in a residential installation. This equipment generates uses and can radiate radio frequency energy and, if not installed and used by the instructions, may cause harmful interference to radio communications. However, there is no guarantee that interference will not occur in a particular installation. Suppose this equipment does cause harmful interference to radio or television reception, which can be determined by turning the equipment off and on. In that case, the user is encouraged to try to correct the interference by one or more of the following measures:

- (1) Reorient or relocate the receiving antenna.
- (2) Increase the separation between the equipment and receiver.
- (3) Connect the equipment to an outlet on a circuit different from the receivers.
- (4) Consult the dealer or an experienced radio/TV technician for help.

#### Radio Frequency Exposure Statement

The device has been evaluated to meet general RF exposure requirements. The device can be used in fixed/mobile exposure condition. The min separation distance is 20cm.