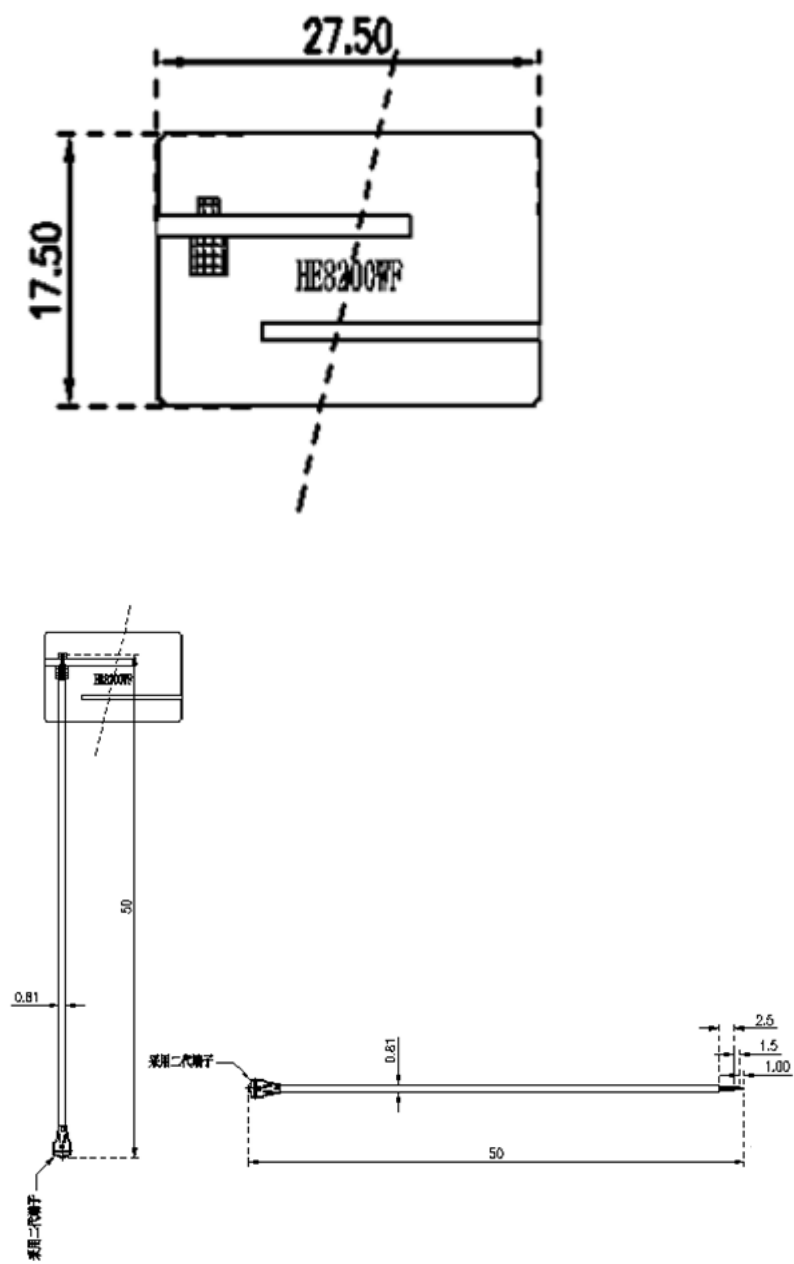


1. Antenna Description:

Antenna type	PIFA antenna
Model	GT2-1
Frequency range	5180-5240MHz, 5745-5825MHz
Manufacturer	SHENZHEN SUDING TECHNOLOGY.,CO LTD
ANT Peak Gain	4.69 dBi

2. Antenna Photo:



3. Test Equipment & Conditions

3.1 Test instrument

VSWR is tested using Agilent E5071B connected to a hand mechanism, and the status is free space.

3.2 Test environment and methods

Dark room specifications: ETS-743

TD-SCDMA test equipment: StarPoint SP6010/Agilent 8960

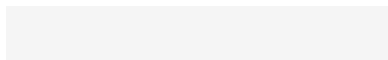
LTE-TDD/FDD-SCDMA test equipment: StarPoint SP8011/CMW500

WCDMA/GSM/CDMA test equipment: Agilent 8960

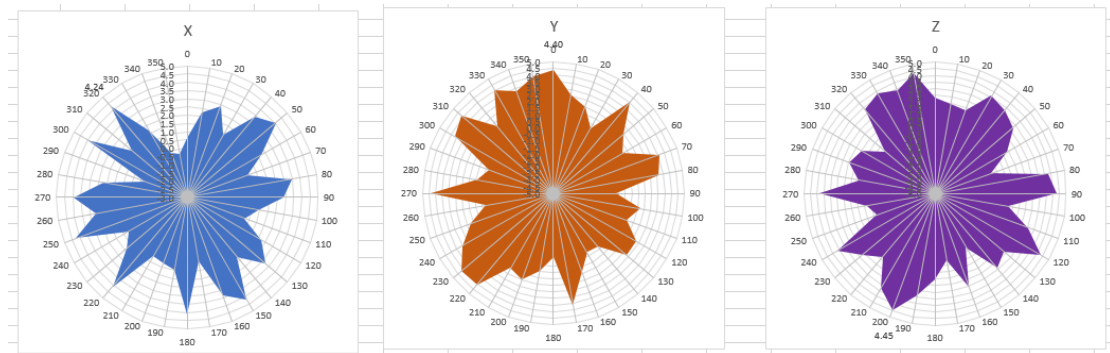
Passive efficiency testing equipment: Agilent Technologies E5071B



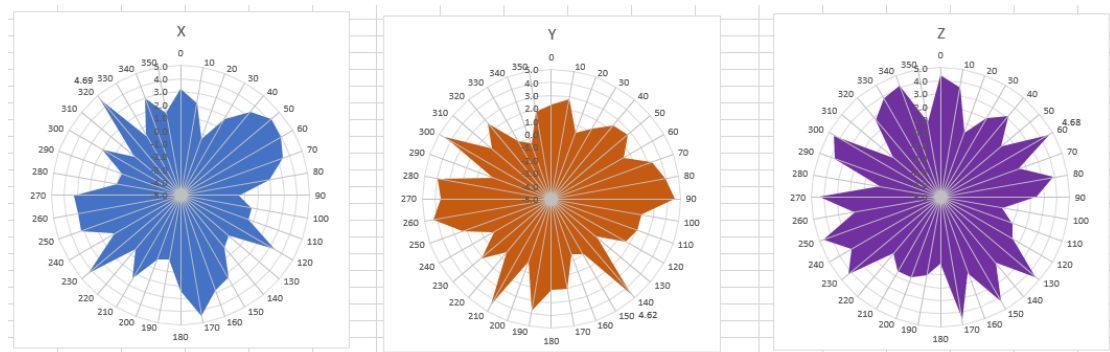
4 . Antenna Radiation Pattern



5180MHz



5220MHz



5240MHz

