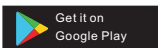
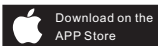


Smart Bulb

User Manual



Download "Smart Life" app

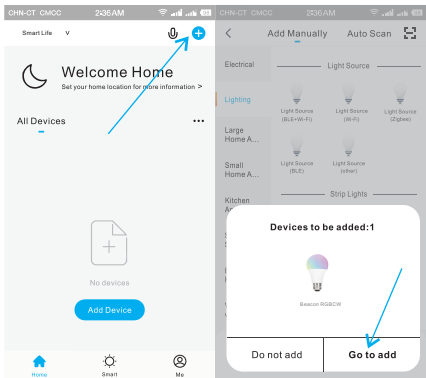


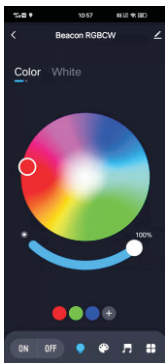
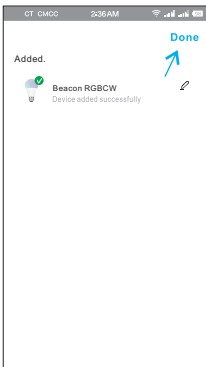
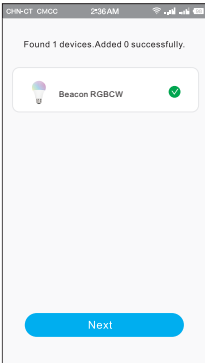
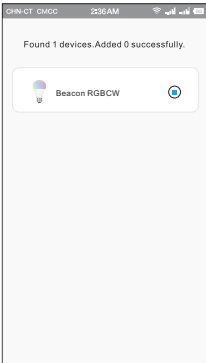
Register an account and choose your country.

Turn on the phone's **Bluetooth**

Adjust the bulb to blink

Turn on/off 3 times(**on/off/on/off/on**)





FAQ&Feedback

1. When connect, please open the mobile phone bluetooth, lamp switch 3 times, flashing state.
2. When using, the Bluetooth of the mobile phone cannot be turned off, otherwise, it cannot be controlled.
3. Keep the control distance between mobile phone and light bulb within 20 meters.
4. Does not support alexa/google home voice control.

12-month quality guarantee

Connection failure or other problems are often caused by poor compatibility between the router and the mobile phone, please contact us, we have professional technicians to help you solve it, after we help you solve the problem, please give us a positive evaluation, we need your affirmation and encouragement, Thank you.



FCC Statement

This equipment has been tested and found to comply with the limits for a Class B digital device, pursuant to part 15 of the FCC rules. These limits are designed to provide reasonable protection against harmful interference in a residential installation. This equipment generates, uses and can radiate radio frequency energy and, if not installed and used in accordance with the instructions, may cause harmful interference to radio communications. However, there is no guarantee that interference will not occur in a particular installation. If this equipment does cause harmful interference to radio or television reception, which can be determined by turning the equipment off and on, the user is encouraged to try to correct the interference by one or more of the following measures: -Reorient or relocate the receiving antenna. -Increase the separation between the equipment and receiver. -Connect the equipment into an outlet on a circuit different from that to which the receiver is connected. -Consult the dealer or an experienced radio/TV technician for help. To assure continued compliance, any changes or modifications not expressly approved by the party.

Responsible for compliance could void the user's authority to operate this equipment. (Example- use only shielded interface cables when connecting to computer or peripheral devices). This equipment complies with Part 15 of the FCC Rules. Operation is subject to the following two conditions:

- (1) This device may not cause harmful interference, and
- (2) This device must accept any interference received, including interference that may cause undesired operation.

FCC Radiation Exposure Statement:

The equipment complies with FCC Radiation exposure limits set forth for uncontrolled environment. This equipment should be installed and operated with minimum distance 20cm between the radiator and your body