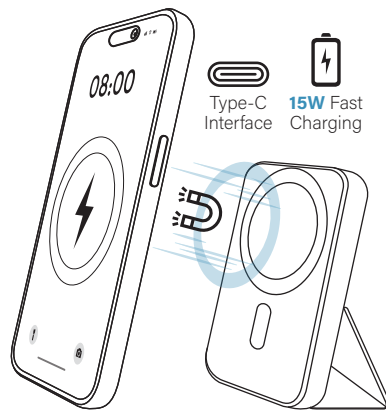


YOUNGREEN

MAGNETIC

WIRELESS PORTABLE CHARGING
POWER BANK 5000mAh



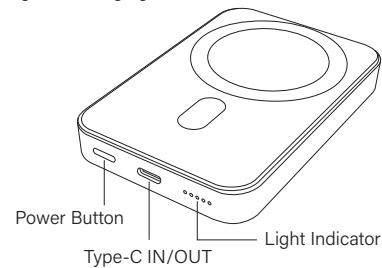
Thank you for purchasing and using this Product!

Please read this operation instruction carefully before using this product

Product Name: Magnetic Wireless Portable Charger
Capacity: 3.85V/5000mAh/19.25WH
Input Port: Type-C
Output Port: Type-C/Wireless Charger
Type-c Input: 5V/3A, 9V/2A, 12V/1.5A
Type-c Output: 5V/3A, 9V/2.2A, 12V/1.67A
Wireless Output: 5W, 7.5W, 10W, 15W
Product Size: "101.15*67.45*14.35mm/3.98*2.66*0.56in"
Product Weight: 148.3g/0.33lb

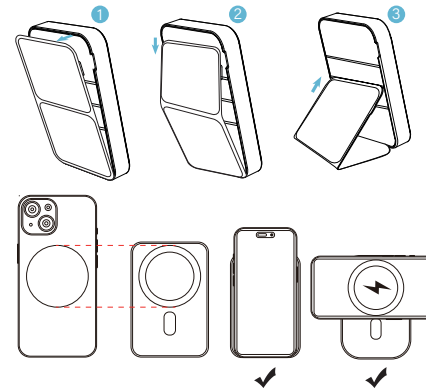
Construction

Magnetic Charging Area



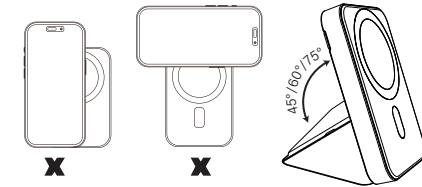
How to use the product?

- 1: Open the folding panel on the back, select the appropriate angle according to your needs, align it with the slot, and you will get a mobile phone holder. (You can also choose not to open the stand and let the power bank lie flat on the table to charge your phone.)
- 2: Place the phone in the wireless charging position and align it with the magnet, and the magnet will cause it to snap into place automatically and start charging. Refer to the figure below for proper device placement.



Attention

- 1: Keep your phone centered on the wireless charging pad when charging wirelessly.
- 2: If the phone does not begin charging right away, adjust the position until its charging icon appears.
- 3: The folding angle has 45°/60°/75°, you can adjust it to suit your needs.



Warm tips

1. For the first time use, please fully charge this product.
2. When charging this product or using this product to charge other devices, please choose an appropriate charger and data cable.
3. When going out or leaving for a long time, or when the product or other devices is fully charged, please unplug the cable in time.
4. If this device is not used for a long time, please keep the product power at about 25%-50% or charge it at least every 3 months.

Power display

Press the on/off button, and the LED light turns on and displays the current power level (as shown below)

LED light display	●●●●	●●●○	●●○○	●○○○
Batteries	100%	75%	50%	25%

Green Light	Magnetic Charger Working Status
On	Working
On	Not Working

Press the on/off button, the LED light will display the current battery level, and the product will enter the power-on state and can charge other devices.

During the charging process, the LED displays the current remaining power.

If the product is turned on without charging other devices for 30 seconds, the LED will turn off and the product will enter the micro-power standby state. Press and hold the button to enter low-current mode for 5 hours. This mode can be used to charge small devices such as Bluetooth headsets. Long press again to exit low-current mode.

LED light display				
Batteries	100%	75%	50%	25%
Green light	Magnetic Charger Working Status			
On	Working			
Off	Not Working			

Compatibility

Magnetic Cases

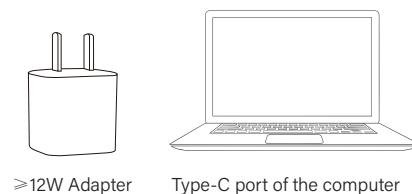
Non-Magnetic

Magnetic phone cases support charging. Ordinary phone cases will affect charging and phone stability. We do not recommend using ordinary phone cases for charging, please remove the cases to charge the phone.

When using the magnetic charger to wirelessly charge a device with a protective case, please make sure that the protective case is non-metallic and not more than 4 mm thick.

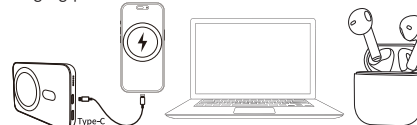
Charge the power bank

For best results, use a power adapter with at least 12W output (not included).



Additional Features

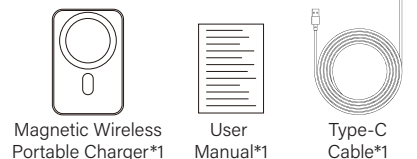
Can charge other mobile phones, laptops, headphones and other devices that are equipped with Type-C charging ports



Warning

1. Keep away from water, fire and overheating.
2. Do not bump, drop, modify, squeeze or disassemble it.
3. Do not leave it charging in high temperature environments or put into the fire.
4. Put it where children are inaccessible or use it under adult supervision.
5. When this mobile power appears to be bulging, deformed, leaking, or the capacity is significantly reduced, please stop using it immediately and dispose it properly.

Packing list



FCC Warning:

This device complies with part 15 of the FCC Rules. Operation is subject to the following two conditions: (1) This device may not cause harmful interference, and (2) this device must accept any interference received, including interference that may cause undesired operation. Any changes or modifications not expressly approved by the party responsible for compliance could void the user's authority to operate the equipment.

NOTE: This equipment has been tested and found to comply with the limits for a Class B digital device, pursuant to Part 15 of the FCC Rules. These limits are designed to provide reasonable protection against harmful interference in a residential installation. This equipment generates, uses and can radiate radio frequency energy and, if not installed and used in accordance with the instructions, may cause harmful interference to radio communications. However, there is no guarantee that interference will not occur in a particular installation.

If this equipment does cause harmful interference to radio or television reception, which can be determined by turning the equipment off and on, the user is encouraged to try to correct the interference by one or more of the following measures:

- Reorient or relocate the receiving antenna.
- Increase the separation between the equipment and receiver.
- Connect the equipment into an outlet on a circuit different from that to which the receiver is connected.
- Consult the dealer or an experienced radio/TV technician for help.

FCC Radiation Exposure Statement

The device has been evaluated to meet general RF exposure requirement.