

Certificate of Qualification

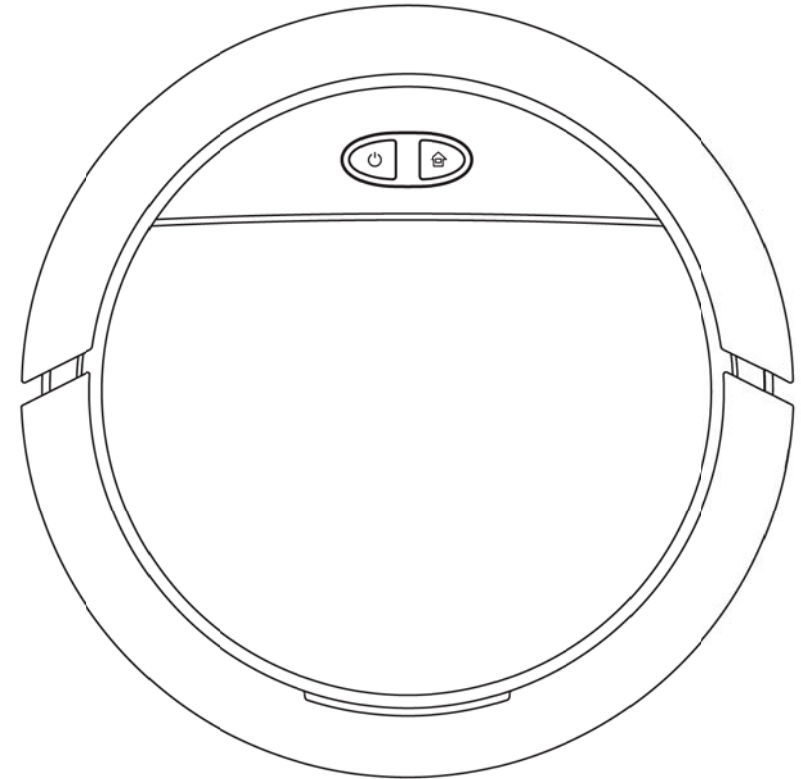
Product name: Intelligent robot cleaner

Model: OB16

Production date: _____

Inspector: QC01

The product conforms to the specified quality standard by inspection, so it is permitted to leave factory.



Hands-free Make Life Intelligent

ROBOTIC VACUUM CLEANER

Thank you very much for your purchasing intelligent robot cleaner! Hope you enjoy it.

Warning

- 1.It is only applicable to original charging base matched by manufacturer. It is prohibited for user to privately replace battery. In case of being suspicious of battery damage, please contact manufacturer, authorized dealer or professionals of similar department for replacement.
- 2.It is prohibited to use in open fire or environment of fragile articles.
- 3.It is prohibited to use in extremely hot (higher than 40°C) or extremely cold (lower than 0°C) environment.
- 4.It is prohibited from human hair, clothing, finger and other parts nearby the opening and moving parts of product.
- 5.It is prohibited to use on humid or standing water ground.
- 6.It is prohibited to collect any article which may block the product, such as stone and waste paper.
- 7.It is prohibited to collect any inflammable articles, such as gasoline, color blender and toner for printer or copy. It is prohibited to use in the clean area of inflammable articles.
- 8.It is prohibited to collect any burning articles, such as cigarette, match, ash and other articles which may cause fire hazard.
- 9.It is prohibited to place articles at suction port. Please don't use the product when the suction port is blocked. Clean dust at suction port, such as cotton fiber and hair, and ensure smooth ventilation of suction port.
- 10.Use power cable with caution to avoid from being damaged. It is prohibited to drag or lift product and charging base with power cable, to use power cable as handle, to clamp power cable in crack between door and its frame, and to pull power cable at sharp corner and turning. It is prohibited to run on power cable which shall keep away from heat.
- 11.It is prohibited to ignite the product even if it has been seriously damaged, because the product battery may cause explosion.

Common problems	Causes and solutions
Decline in sweeping capacity	1.Dustproof box has been full, please clear dustproof box. 2.Filter screen has been blocked, please clear or replace filter screen.
Charging fails	1.In case of poor contact, whether there is foreign matter inside, please clear up the shrapnel of charging base and charging contact on host. 2.Check the charging contact on host is fully contacted with the charging shrapnel of charging base.
The machine is caught in trouble and out of service	1.The host will independently try to get out of trouble through all kinds of methods if located in the complex environment, narrow space and other environment, if not, it is suggested to operate by hand.
The fall arrest function is disabled or invalid	1.The host hangs in the air, please move to new position for start. 2.Please wipe off dust on fall arrest sensor, and remove the fault.
Impossible to recharge	1.When the received signal under complex environment is poor and the post is too far away from the charging base, the host will independently try to recharge through all kinds of methods, if not, please put the host near the charging base.

Contents

1. Safety code	3
2. Product formation	5
3. Product use	7
4. Product specification	13
5. Environmental protection	14
6. Troubleshooting	16

Safety code

Please keep alert always in use, and follow the following matters:
Please read the instruction carefully before using the product and keep it properly.

!Attention

- 1.Please eliminate possible problems of product in sweeping as soon as possible. Clear up power cable and tiny items on ground to avoid product from being blocked in sweeping process. Turn over the edge of carpet below the carpet, and avoid the hanging curtain and table cloth, etc. from touching the ground.
- 2.In case of hanging in the air, such as stairs, please firstly test whether the product does not fall at the edge of area hanging in the air. Install guard railing at the edge of area hanging in the air to prevent product from falling. Ensure such protective facility not to cause tripping and other personal injuries.
- 3.Please use the product according to the instruction for use. Only use the attachment recommended or sold by manufacturer.
- 4.Ensure the power voltage to conform to the voltage labeled on charging base.
- 5.Ensure that the dustproof box and filter material have been installed in place before using product.
- 6.In case of the power flexible line is damaged, replacement must be conducted by professionals assigned by manufacturer, its maintenance department or similar departments to avoid risk
- 7.Please firstly switch off product before cleaning and maintenance
- 8.Must pull the power plug out before cleaning and maintenance.
- 9.Before abandoning, please firstly take down the product from charging base, turn off power and take out battery.
- 10.If the product is not used for a long time, please power off.
- 11.Before abandoning, must follow local laws and regulations to remove and abandon product battery.
- 12.Please follow local laws and regulations to dispose old battery.
- 13.The product cannot be used by children under 8 years old or user with mental disturbance. If necessary, please use it under the supervision and guidance of guardian. Please don't allow children to ride on the product, or play the product as toy.
- 14.Only use in indoor family environment. Don't use it outdoor and in business and industry place.
- 15.Don't use it in the room where infants are in sleep.
- 16.Don't use it with damaged power cable or power socket. Don't use it when it does not work normally due to fall, damage, use outdoor or water inlet. To avoid damage, the product shall be repaired by the manufacturer or its after-sales service.
- 17.Please use the product according to the instruction for use. The Company is not responsible for any loss and damage caused by misuse.

PDA conventional fault solution

Common problems	Causes and solutions
Host incapable of connecting with APP	<ol style="list-style-type: none"> 1.The user name and password of network router are wrong, ensure to enter correct "user name" and password. 2.Host exceeds the scope of signal coverage of network router, ensure host within the scope of network signal. 3.Host connection does not support 5G network temporarily, please use 2.4G (WIFI) network during networking. 4.Also open WIFI and Bluetooth while connecting host. 5.Please use correct connection mode to download APP.
No startup response	<ol style="list-style-type: none"> 1.There is a main switch at bottom of robot cleaner, please check whether the switch is closed. 2.The robot cleaner may be short of power, please connect power cable or charge with charging base for above 2h, and then start up for test. 3.If above two points are eliminated, the battery may be in fault, so it is suggested to repair or replace battery after returning to factory.
The robot cleaner in incapable of sweeping (alarm voice: edge brush locking, low battery, fan locking and left and right rounds locking)	<ol style="list-style-type: none"> 1.The hairs are twined in the edge brush and driving wheel, so they shall be cleared after halt.

Category of parts	Harmful substance					
	Lead (Pb) and its compound	Mercury (Hg) and its compound	Cadmium (Cd) and its compound	Chromium VI (Cr (VI)) and its compound	Polybrominated biphenyls (PBB)	Polybrominated diphenyl ethers (PBDE)
Plastic parts	○	○	○	○	○	○
Hardware	×	○	○	○	○	○
Host circuit module	×	○	○	○	○	○
Electronic components	○	○	○	○	○	○
Battery	○	○	○	○	○	○
Plug power cable (metal part)	×	○	○	○	○	○
<div>Notes: This form is prepared according to provisions of SJ/T11364.</div> <div>○: Indicate that the content of the hazardous substance in all homogeneous materials of this part is below the requirement for limit specified in existing effective version of GB/T 26572.</div> <div>×: Indicate that the content of the hazardous substance at least in one material of this part exceeds the requirement for limit specified in existing effective version of GB/T26572, and there is no mature alternative solution which conforms to the requirement for environmental protection of EU RoHS directive in the industry at present.</div>						

Caution! The battery leakage will cause human injury!
In case of battery leakage, ensure to avoid from contacting eyes or skin.
In case of careless contact, please immediately wash hands and eyes with clean water. In case of discomfort, please see medical advice instantly.

Product composition/package content

Serial Number	Description	Quantity
1	Host (including battery)	1
2	Recharge seat	1
3	Adapte	1
4	Instruction	1
5	Connection Guide	1
6	Rag	1
7	Brush	1
8	Water Tank	1

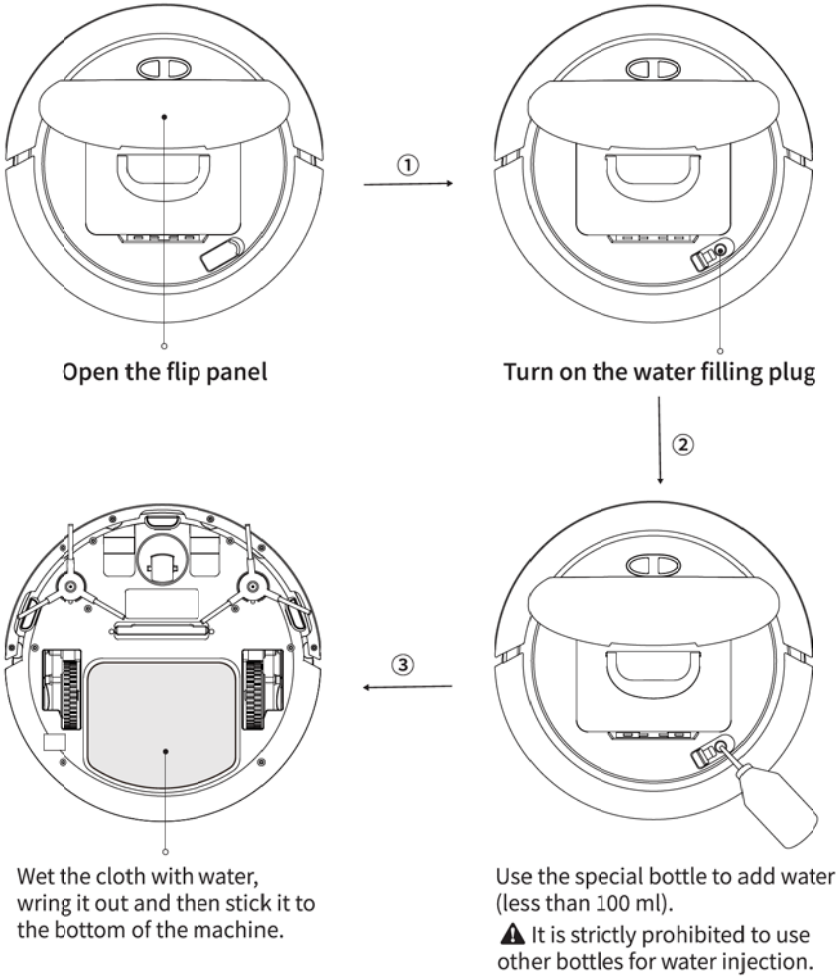


Product parameters

Product model	OB16
Host operating voltage	14.4V ===
Host rated power	26W
Cleaning time	Silent mode 130 min, Normal mode 110 min, Turbo mode 80 min.
Rated Input	19V === 500mA
Power adapter	LYD1900500CF
Input parameters	AC 100-240V~0.4A 50/60Hz
Output parameters	19V === 500mA
Charging time	\approx 4.5H

* Due to demand for continuous improvement of product, the product in data is subject to material object, and we reserve the right of product update.

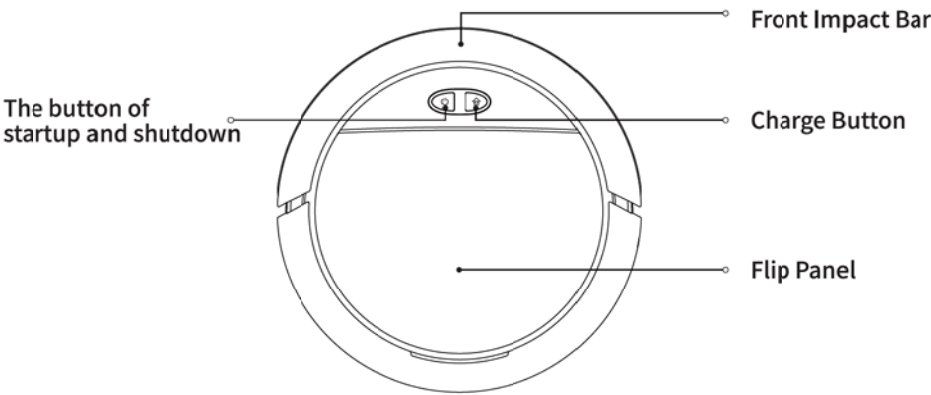
Product use/water tank



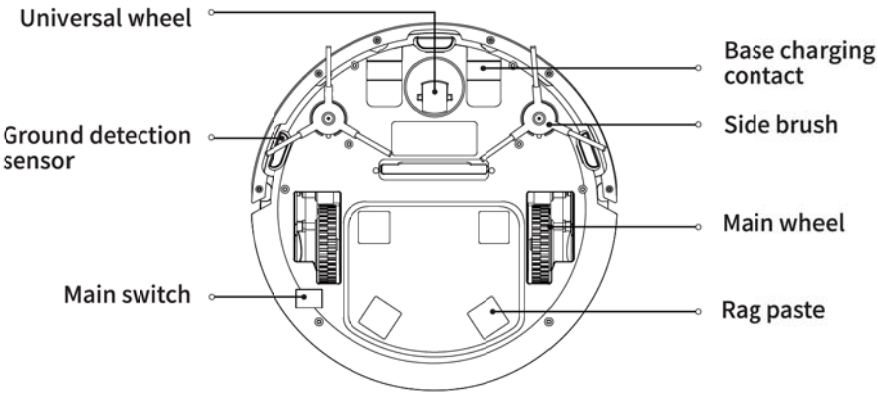
*Please don't use water tank modules on carpet.
*Please keep attention in cleaning, timely add water or clear.

Name of product module/part

Front view of machine



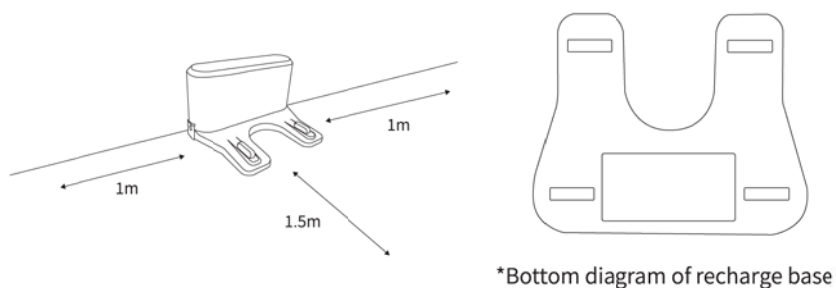
Bottom view of machine



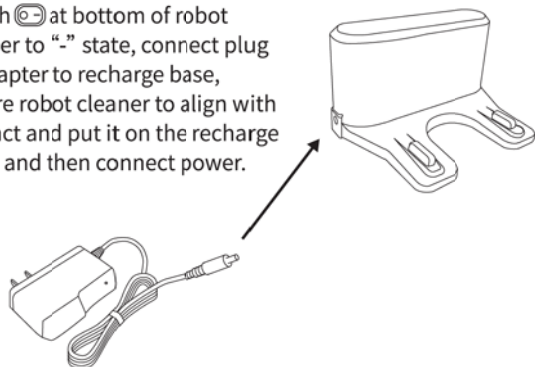
Product use/host charging

! Attention

Keep back of recharge base against wall, put it on flat ground, and don't put article within 1.5m in front of 1m at left and right. Connect adapter with recharge base, and then connect power.



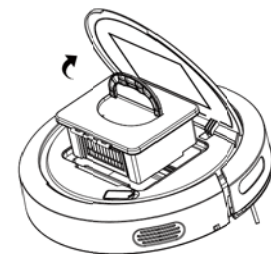
Charging method : ☺ Press main switch ☺ at bottom of robot cleaner to “-” state, connect plug of adapter to recharge base, ensure robot cleaner to align with contact and put it on the recharge base, and then connect power.



Warm prompt:

It is recommended to fully charge for the first use (about 4.5 hours) until the red charging light on the sweeper goes off.

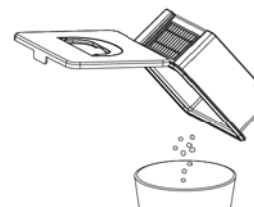
Product use/ dustproof box



1. Open the flip panel.



2. Remove the dust box.



3. Pour out garbage (it is recommended to clean it at least once a week).



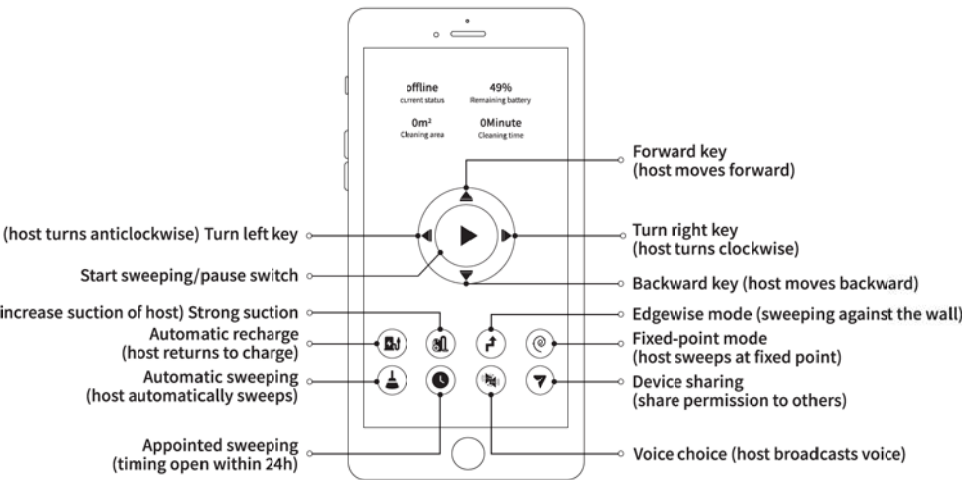
4. After prolonged use, remove the filter material components for cleaning and rinse the dust box and filter material. (recommended cleaning once a month).



5. After cleaning, shake the water droplets dry. After drying, please install the filter material in sequence and then put the dust box back in place before use.

Note: * Please rinse with clean water and do not add any detergent. It can be used only after the dust box is completely installed to prevent incomplete dust boxes from blocking and damaging the machine's air ducts.

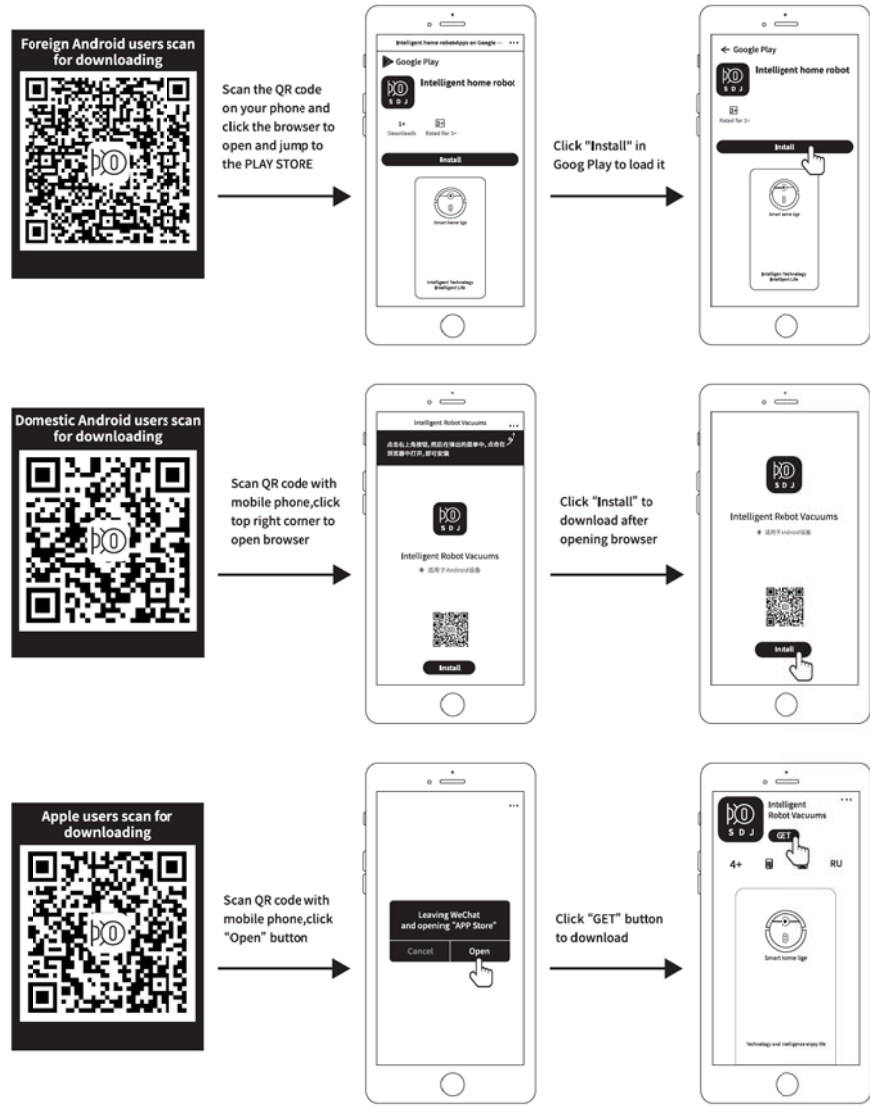
Product use/APP



Product use/APP download and connection

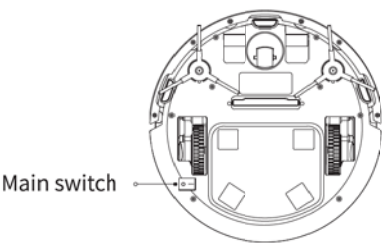
Operating steps of mobile phone APP:

1. Scan QR code with mobile phone, download and install product APP.

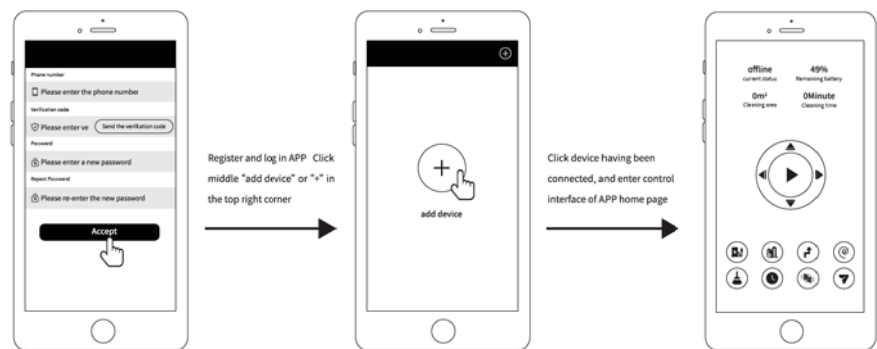


Product use/APP download and connection

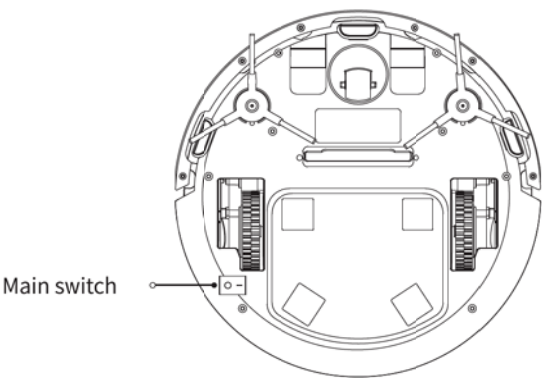
2.Ensure adequate electricity of robot cleaner, press main switch  to “-” state.





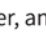
3.Open APP to connect robot cleaner.

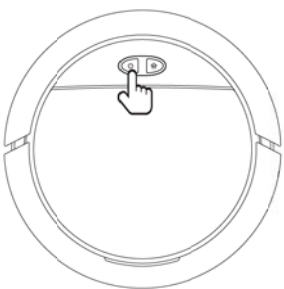


Product use/in-service state

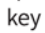
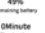


press bottom main switch  to “-” state

Method 1: After opening main switch, click  key on robot cleaner, and start sweeping (press  key to pause when sweeping).



Method 1

Method 2: After opening main switch, click  key on APP, and start sweeping (press  key to pause when sweeping).



Method 2

FCC Caution.

This device complies with part 15 of the FCC Rules. Operation is subject to the following two conditions: (1) This device may not cause harmful interference, and (2) this device must accept any interference received, including interference that may cause undesired operation.

Any Changes or modifications not expressly approved by the party responsible for compliance could void the user's authority to operate the equipment.

Note: This equipment has been tested and found to comply with the limits for a Class B digital device, pursuant to part 15 of the FCC Rules. These limits are designed to provide reasonable protection against harmful interference in a residential installation. This equipment generates uses and can radiate radio frequency energy and, if not installed and used in accordance with the instructions, may cause harmful interference to radio communications. However, there is no guarantee that interference will not occur in a particular installation. If this equipment does cause harmful interference to radio or television reception, which can be determined by turning the equipment off and on, the user is encouraged to try to correct the interference by one or more of the following measures:

- Reorient or relocate the receiving antenna.
- Increase the separation between the equipment and receiver.
- Connect the equipment into an outlet on a circuit different from that to which the receiver is connected.
- Consult the dealer or an experienced radio/TV technician for help.

*RF warning for Mobile device:

This equipment complies with FCC radiation exposure limits set forth for an uncontrolled environment. This equipment should be installed and operated with minimum distance 20cm between the radiator & your body.