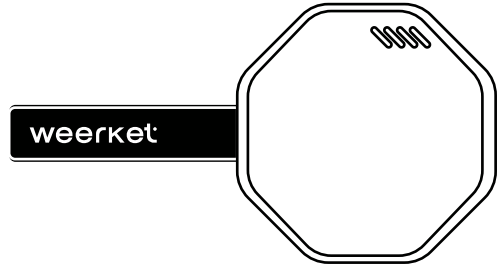




COZ-D1 User Manual



Copyright INNERTRON Inc. All Rights Reserved.

Warning




Prior to using the product, we recommend that you confirm the following precautions in order to use it safely:

- Do not touch the product with wet hands.
It may cause fire, electric shock, or short circuit.
- Do not pull the cable excessively hard when unplugging it after charging.
This may damage the cable and cause it to short or break.
- Please do not drop or subject the product to impact.
This may cause internal damage to product.
- If an illegal spy camera is detected, please do not attempt to find it yourself.
Instead, report it or leave the place.
(We will not be responsible for any legal consequences personal losses.)
- If you smell something burning or see smoke coming from the product,
please turn off the power and request After-Sales Service.
- When cleaning the appearance of this product, please do not use gasoline, benzene, thinner, etc.
Instead, use a dry cloth or rag to wipe it down.
- Contains FCC ID: 2AC7Z-ESP32WROOM32E

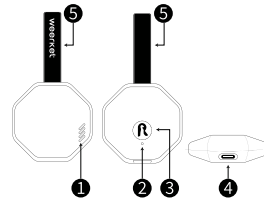
Note: This equipment has been tested and found to comply with the limits for a Class A digital device, pursuant to part 15 of the FCC Rules. These limits are designed to provide reasonable protection against harmful interference when the equipment is operated in a commercial environment. This equipment generates, uses, and can radiate radio frequency energy and, if not installed and used in accordance with the instruction manual, may cause harmful interference to radio communications. Operation of this equipment in a residential area is likely to cause harmful interference in which case the user will be required to correct the interference at his own expense.

1.Configuration and Appearance

1.1 Design | Components

		
COZ-D1	Charging cable (Type C)	User guide

1.2.1 Design | Part Names



- 1 Camera detection status LED(Front)**
Indicates the camera detection status.
- 2 Device status LED(Back)**
Indicates the power and bluetooth status.
- 3 Power Button**
Used for power control.
- 4 Charging Port**
Can charge the device by connecting a USB Type C cable.
- 5 Strap**
It is a strap that can be worn on the wrist for use.

1.2.2 Design | Product Specifications

Wi-Fi Standard	802.11 (b/g/n)	Battery Capacity	260mAh, 962Wh
Bluetooth Specific	V4.2 BR/EDR	Weight (g)	30
Power Supply	DC 5V	Dimension (W x H x D) mm	55 X 55 X 20
Charging Time	Within 1 hour		

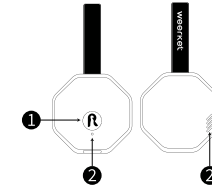
2.How to Use

2.1.1 Basic Setup| Weerket App Installation

Before using the device, please search for the product-specific app 'Weerket' in the app store that matches your phone model and download it.

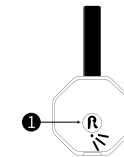


2.1.2 Basic Setup| Power On

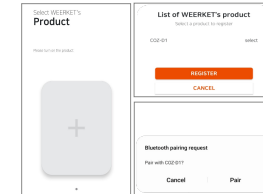


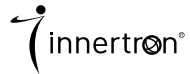
- 1** Press and hold the power button on the product for more than 1 second
 - 2** The product status LED and the camera detection status LED will light up blue and the power will turn on.
- As soon as the power is turned on, the product will continuously perform camera detection.

2.1.3 Basic Setup| Device Registration



- 1** Please turn on the power of the device and the Bluetooth function on your smartphone.
- 2** You can register your device in the app as follows:



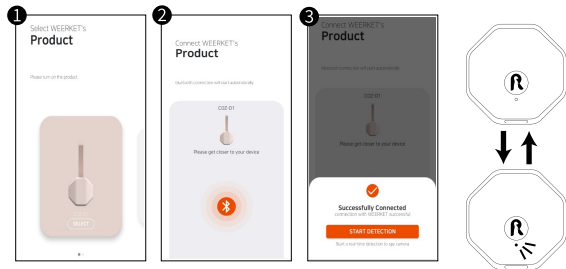


Innertron Inc.
301, Harmony-ro, Yeonsu-gu, Incheon City
22014 Korea
TEL : 032-320-2580 / FAX : 032-816-1457
Homepage : www.weerket.com



2.2.1 Operation | Connecting the App with Product

- 1) Select the registered device.
- 2) After selecting the device, the connection will proceed.
- 3) When the connection is complete, the blue LED on the product will blink at 1-second intervals, and a success notification will appear in the app.



If a failure notification appears, please turn off and on the power of the product.
If the failure notification still appears, unregister and re-register the product.

2.2.2 Operation | Camera Detection

- Upon successful connection, you can check the cameras detected by the product.
- When a camera is detected, the orange LED on the front of the product blinks every 1 second.
- If no camera is detected, the LED on the front of the device will remain blue.

2.2.3 Operation | Check Detected Information

After connected to the app and detecting a camera, you can check the following information about the detected camera on the app.

1. The distance between the detected camera and the device.
2. The number of detected cameras.
3. Detected time and AP(Access Point) information of the connected camera.

To check the detailed information of the detected camera, follow the steps below.

- 1) Click the "Details" button.
- 2) If multiple types of cameras are detected, you can swipe to see other cameras.

2.2.4 Operation | Device Charging

Charging is done by connecting the Type-C cable included in the accessories to the product.

During charging, the LED on the back of the device will turn red.
When charging is complete, the LED on the back of the device will turn green.

2.3.1 Software Update | Preparing for Update

Product updates can only be performed through the app.
If there is an update available, an update notification message will be displayed during step 2.2.1
You can also check for updates in the settings menu.

When you click 'Update' on the notification window, the update process will begin.

When you click 'Next' on the notification window, the update process will begin.

※ If you don't proceed with the update, a message will be displayed every time you connect the device.

2.3.2 Software Update | Update Start

- Selecting 'Update' will initiate the update process.
- Please keep the app and product powered on until the update is completed.
- When update is complete, please click "Start Detection" to proceed the 2.2.1 screen.
- If any issues arise during the update process, please try again by clicking "Retry".



Power source for the product shall be complied with the requirement of
ES1/PS2 in accordance with EN IEC 62368-1:2020 + A11:2020 and
EN 62368-1:2014+A11:2017

FCC Part 15 Clause 15.21 [Do not Modify warning]:

“Changes or modifications not expressly approved by the party responsible for compliance could void the user's authority to operate the equipment”.