

This document contains photos of the Righthand CabinLink6 Wireless Access Point. Photos show an inside view of the Main Board Assembly.

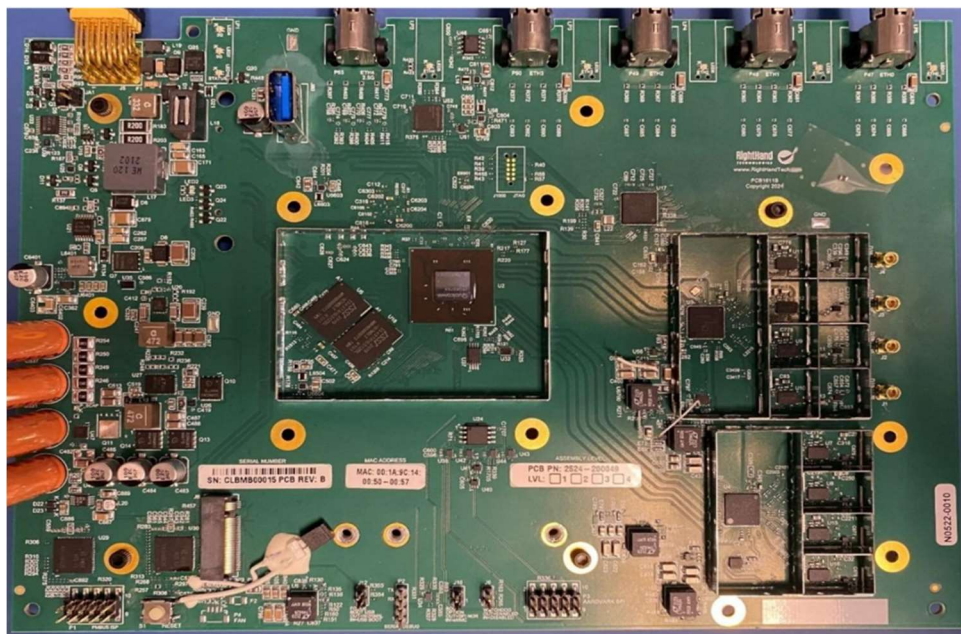


Figure 2-1: Main CPU board

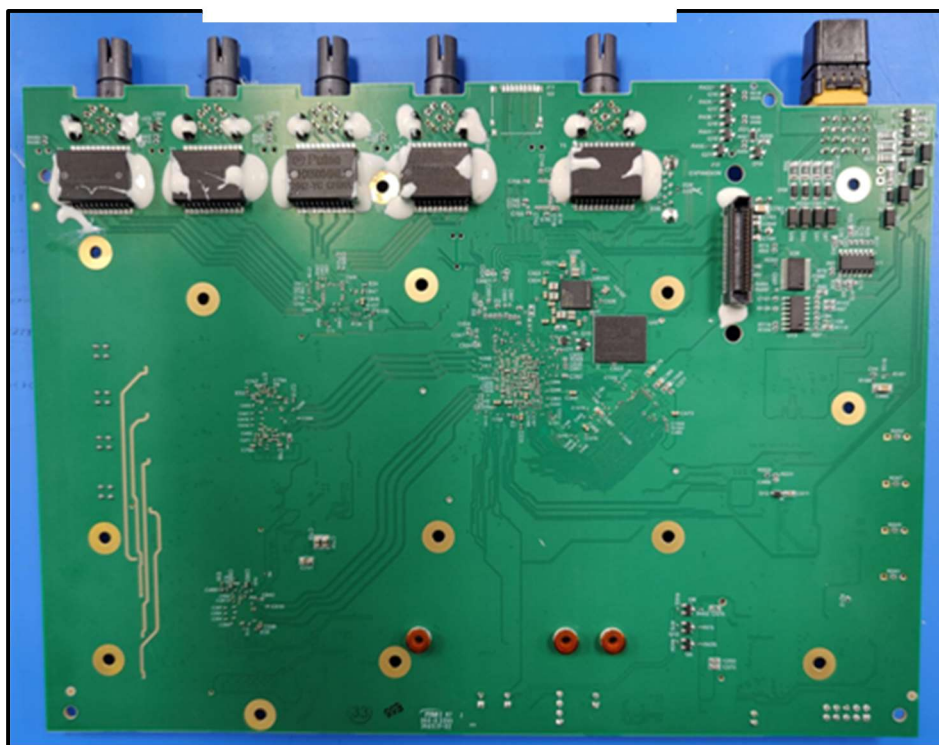




Figure 2-3: MMCX 50Ω Termination Plugs

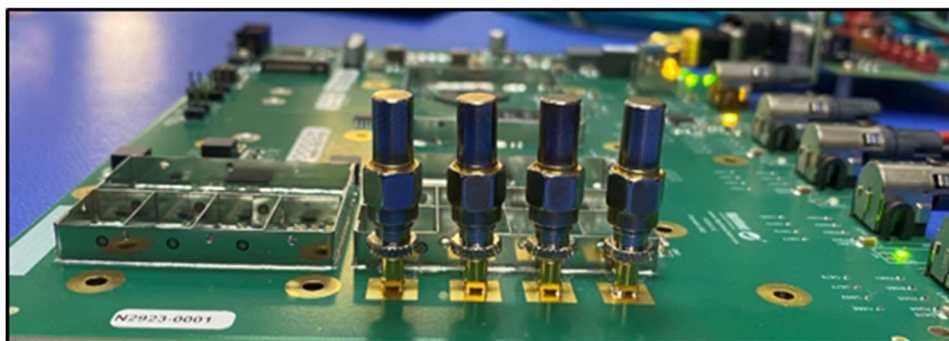


Figure 2-4: MMCX 50Ω Termination Plugs Installed to Main Board

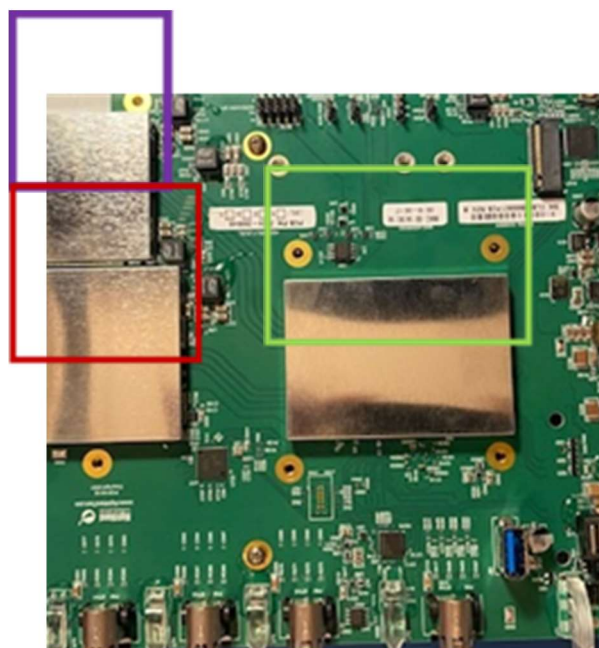


Figure 2-2: Main Board with Shield Covers Installed

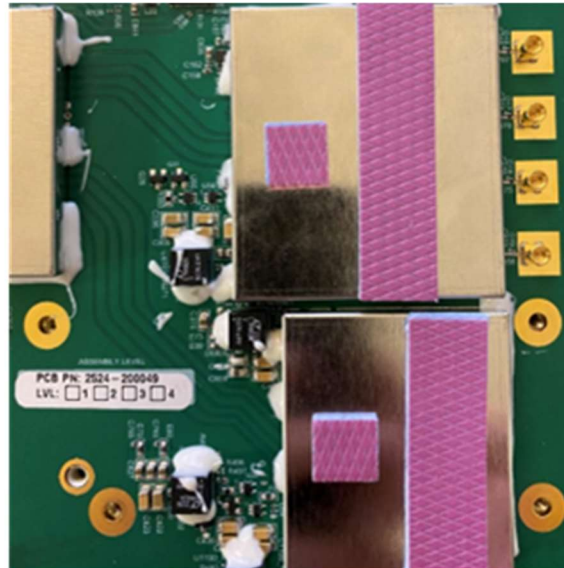


Figure 2-3: Shield Covers for Antenna Components with Thermal Pads Applied

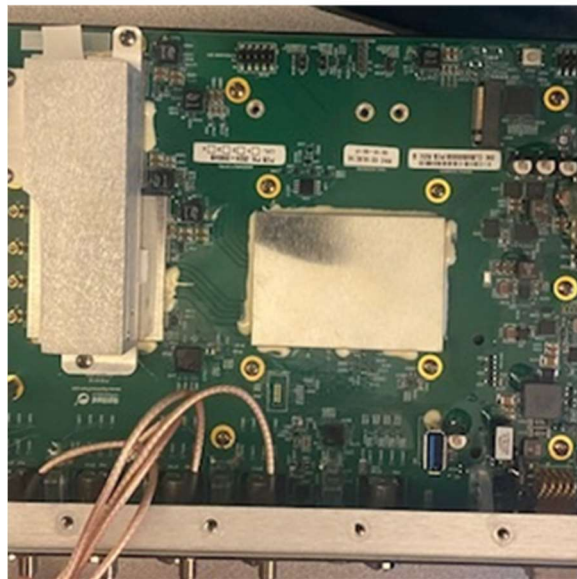


Figure 4-1: Heatsink Installed over Antenna Hardware