



AA28354 View Plus : Display + Remote Internal Pictures



Display



Remote

Display

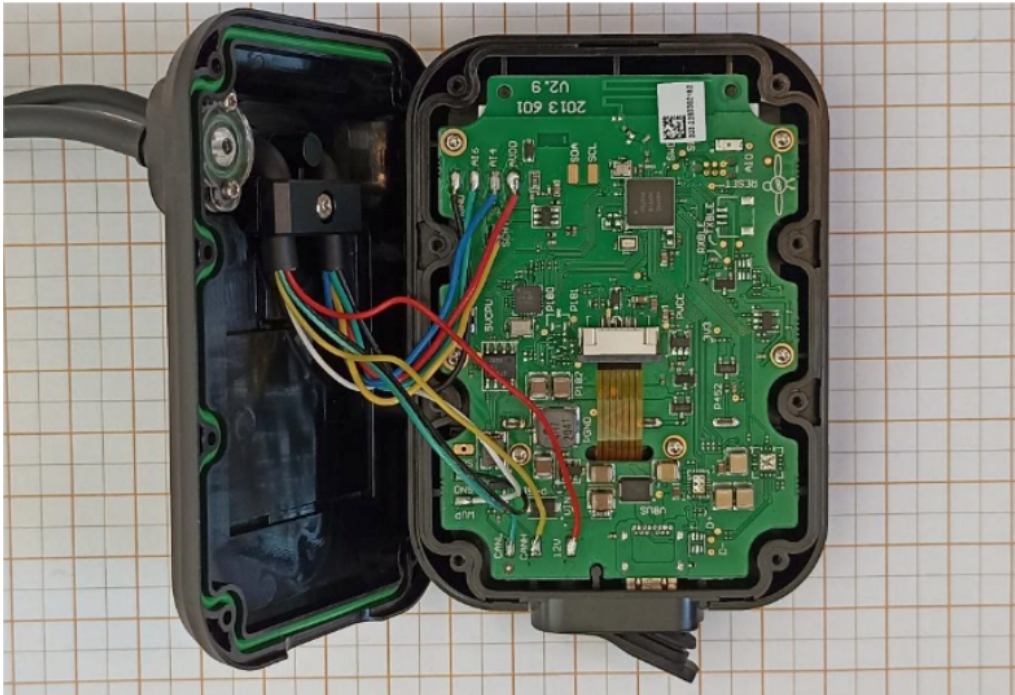


Figure 1: Display with front cover removed (PCBA exposed)

Remote

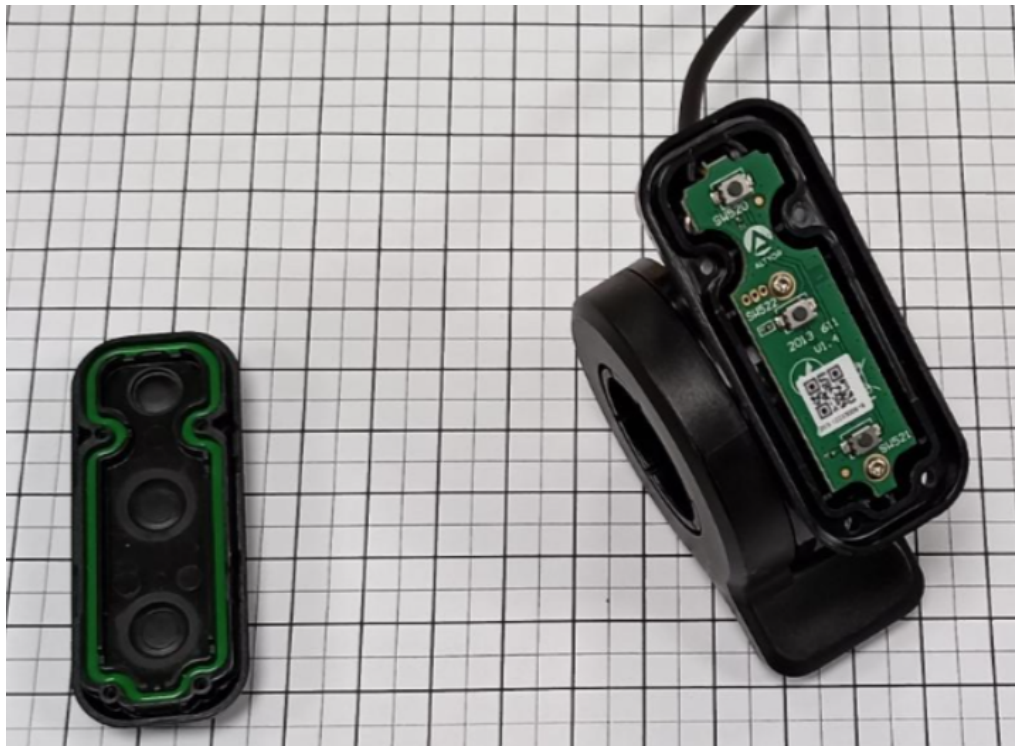


Figure 2: Remote with front cover removed (PCBA exposed)

Display

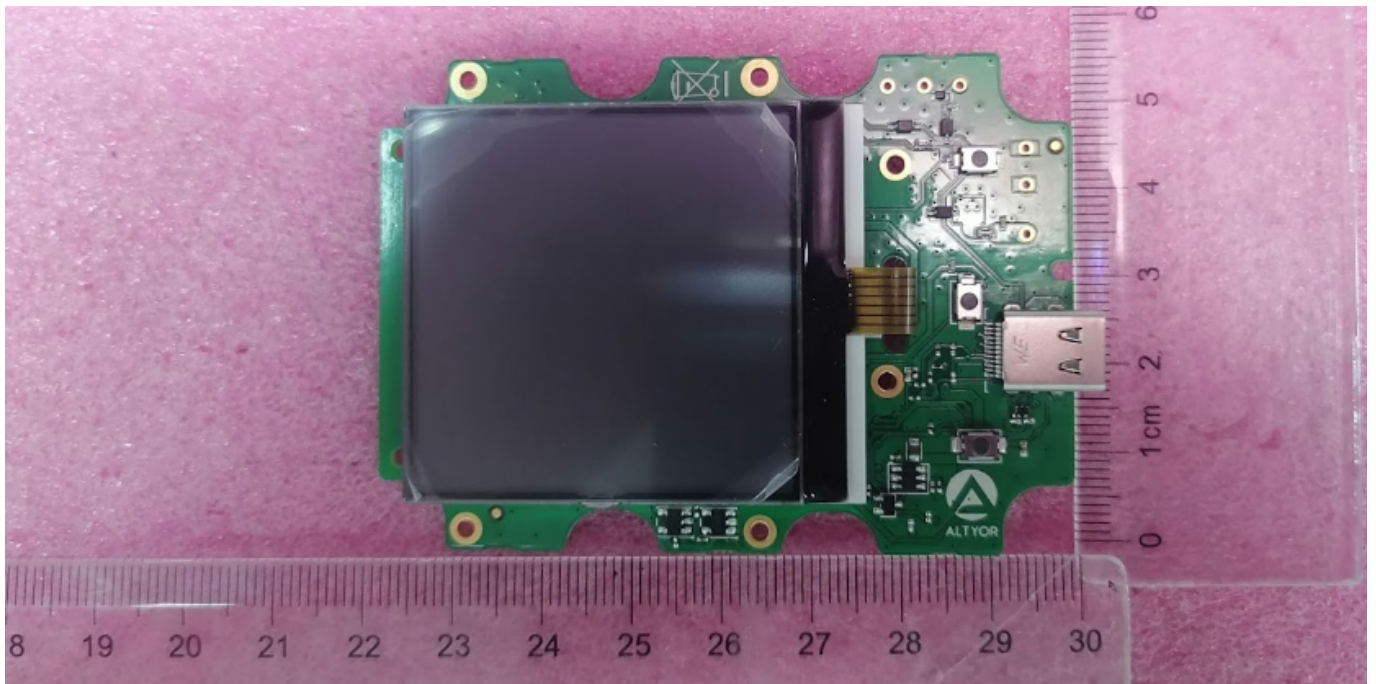


Figure 3: Display PCBA on screen side (TOP)

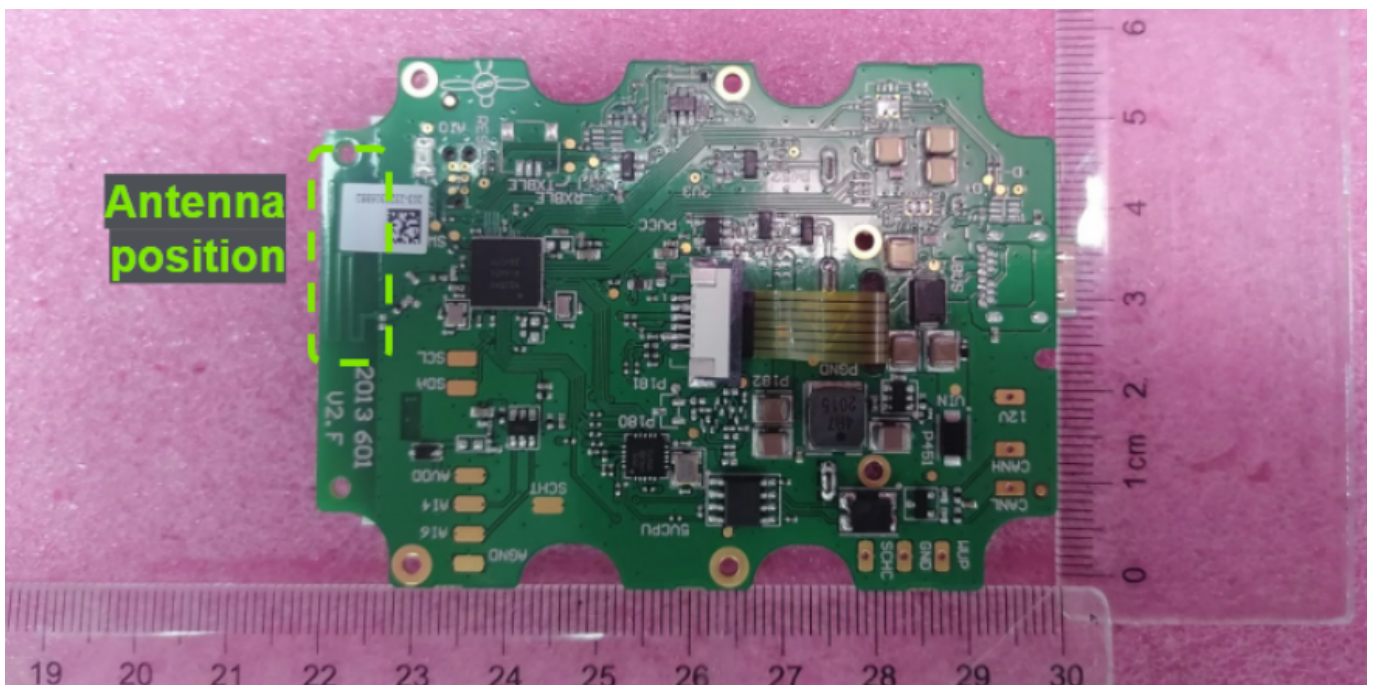


Figure 4: Display PCBA on side opposite to the screen (BOTTOM), with Antenna position description

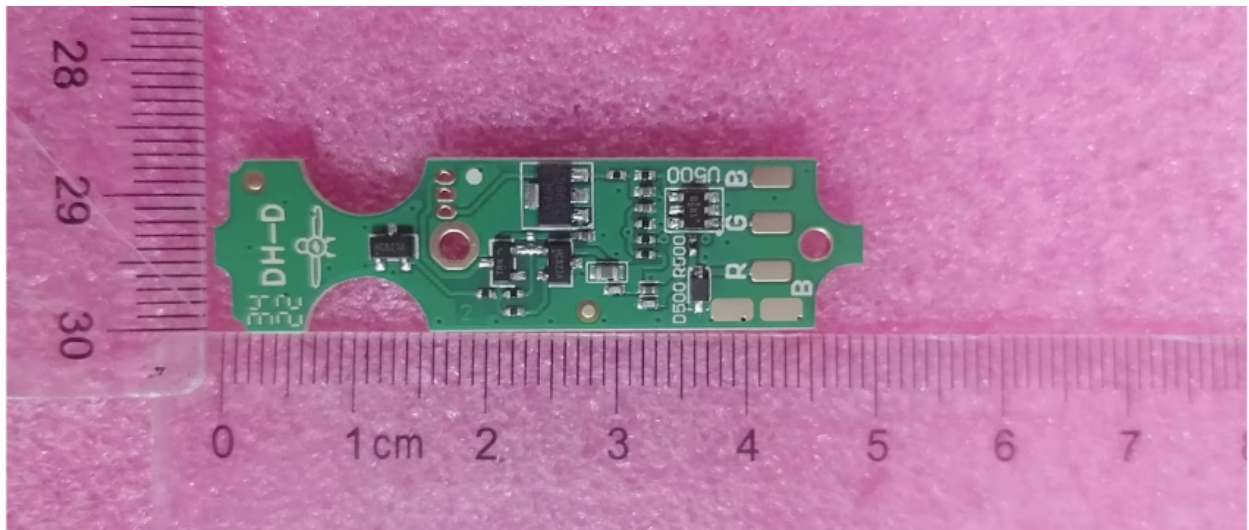


Figure 5: Remote PCBA bottom side

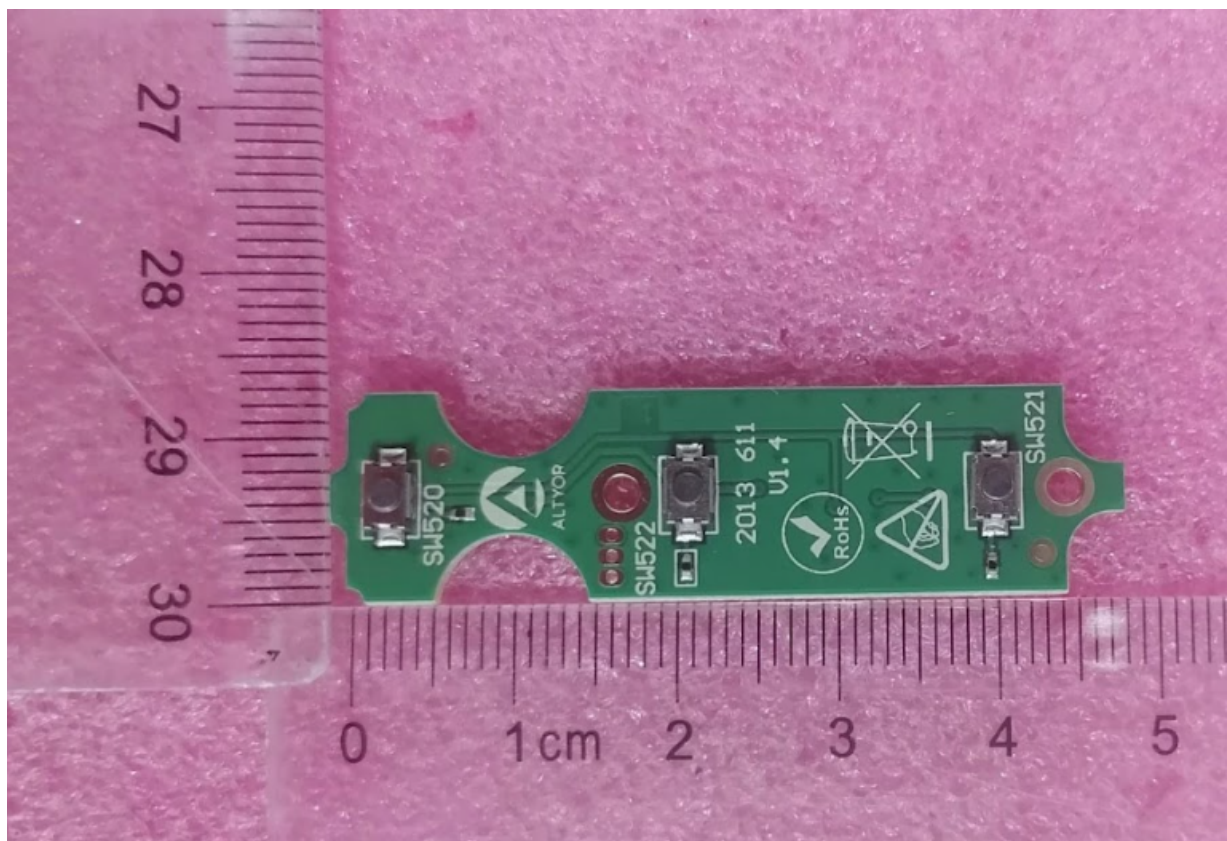


Figure 6 : Remote PCBA top side