

AirLight Pro

FR

EN

ES

DE

IT

PT

NL

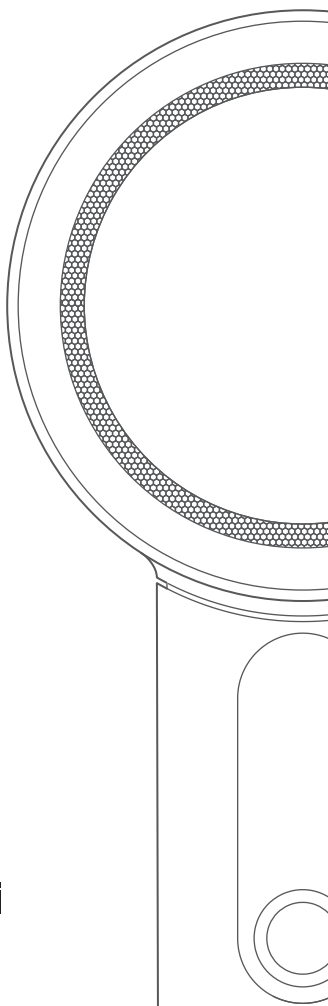
EL

SV

CH

L'ORÉAL
PROFESSIONNEL
PARIS

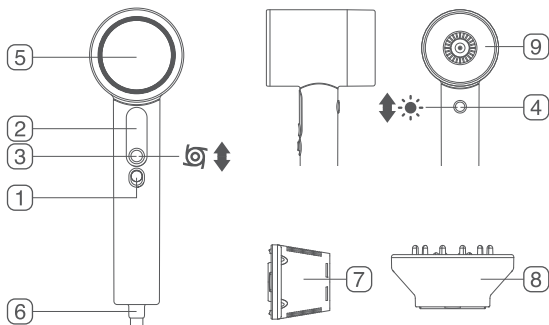
× **Zuvi**



Contents

(FR)	French - Français	5
(EN)	English	10
(ES)	Spanish - Español	15
(DE)	German - Deutsch	20
(IT)	Italian - Italiano	25
(PT)	Portuguese - Português	30
(NL)	Dutch - Nederland	35
(EL)	Greek - Ελληνικά	40
(SV)	Swedish - Svenska	45
(CH)	中国 - 簡体	50

AirLight Pro



Description

FR: 1. On / Off button 2. Built-in display 3. Airspeed button 4. Heat button (press & hold for cool shot) 5. Main inlet filter 6. Handle inlet filter 7. The styling concentrator 8. The diffuser 9. Optical filter glass

EN: 1. On / Off button 2. Built-in display 3. Airspeed button 4. Heat button (press & hold for cool shot) 5. Main inlet filter 6. Handle inlet filter 7. The styling concentrator 8. The diffuser 9. Optical filter glass

ES: 1. On / Off button 2. Built-in display 3. Airspeed button 4. Heat button (press & hold for cool shot) 5. Main inlet filter 6. Handle inlet filter 7. The styling concentrator 8. The diffuser 9. Optical filter glass

DE: 1. On / Off button 2. Built-in display 3. Airspeed button 4. Heat button (press & hold for cool shot) 5. Main inlet filter 6. Handle inlet filter 7. The styling concentrator 8. The diffuser 9. Optical filter glass

IT: 1. On / Off button 2. Built-in display 3. Airspeed button 4. Heat button (press & hold for cool shot) 5. Main inlet filter 6. Handle inlet filter 7. The styling concentrator 8. The diffuser 9. Optical filter glass

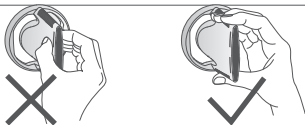
PT: 1. On / Off button 2. Built-in display 3. Airspeed button 4. Heat button (press & hold for cool shot) 5. Main inlet filter 6. Handle inlet filter 7. The styling concentrator 8. The diffuser 9. Optical filter glass

NL: 1. On / Off button 2. Built-in display 3. Airspeed button 4. Heat button (press & hold for cool shot) 5. Main inlet filter 6. Handle inlet filter 7. The styling concentrator 8. The diffuser 9. Optical filter glass

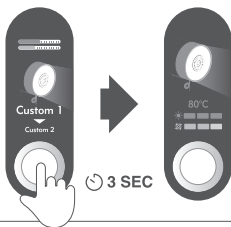
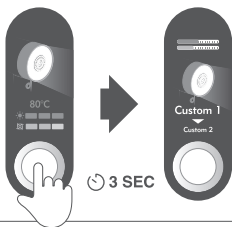
EL: 1. On / Off button 2. Built-in display 3. Airspeed button 4. Heat button (press & hold for cool shot) 5. Main inlet filter 6. Handle inlet filter 7. The styling concentrator 8. The diffuser 9. Optical filter glass

SV: 1. On / Off button 2. Built-in display 3. Airspeed button 4. Heat button (press & hold for cool shot) 5. Main inlet filter 6. Handle inlet filter 7. The styling concentrator 8. The diffuser 9. Optical filter glass

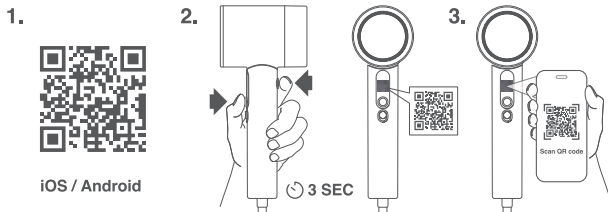
CH: 1. On / Off button 2. Built-in display 3. Airspeed button 4. Heat button (press & hold for cool shot) 5. Main inlet filter 6. Handle inlet filter 7. The styling concentrator 8. The diffuser 9. Optical filter glass



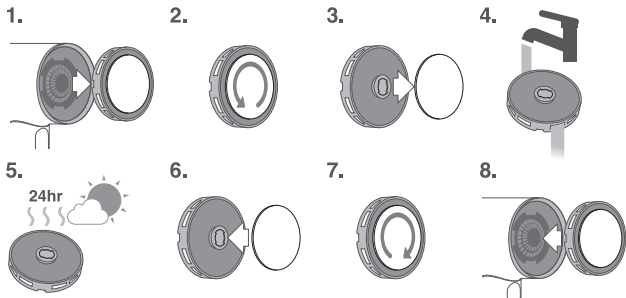
Hot attachment, handle with caution / multi language / multi language / multi language / multi language / multi language / multi language / multi language / multi language / multi language / multi language



Switching between Standard mode and Pro modes / multi language / multi language / multi language / multi language / multi language / multi language / multi language / multi language / multi language

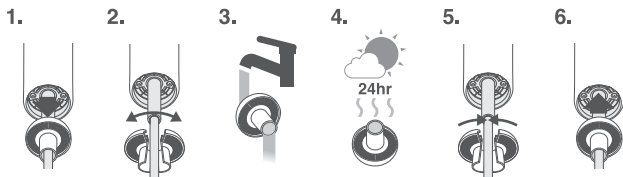


App download and pair (optional) / multi language / multi language / multi language / multi language / multi language / multi language / multi language / multi language / multi language



Clean the filters / multi language / multi language / multi language / multi language / multi language / multi language / multi language / multi language / multi language

Main filter / multi language / multi language / multi language / multi language / multi language / multi language / multi language / multi language / multi language / multi language



Handle filter / multi language / multi language / multi language / multi language / multi language / multi language / multi language / multi language / multi language / multi language

Important Safety Instructions



Before using this product, please read all instructions and warning notices in this manual and on the product.

When using any electrical appliance, basic precautions should be followed, including the following:



Warning - The hair dryer contains magnets. To reduce the risk of fire, electric shock, or injury:

Keep away from pacemakers, defibrillators, credit cards and electronic storage media.



Warning - These warnings apply to the appliance, and also where applicable, to all tools, accessories, chargers or adapters.

For the reduction of fire, electric shock and injury hazards:



KEEP AWAY FROM WATER

Warning: Do not use this appliance near bathtubs, showers, basins, or other vessels containing water.

- 1) This appliance should not be used by children aged 8 years and below and persons with reduced physical, sensory or reasoning capabilities, or lack of experience and knowledge, only if they have been given supervision or instruction by a responsible person concerning use of the appliance in a safe way and understand the hazards involved. Cleaning and user maintenance shall not be made by children without supervision.
- 2) Do not use this product as a toy. Close attention is necessary when used by or near children. Children should be supervised to ensure that they do not play with the appliance.
- 3) If the optical filter glass is fractured or broken, or there is any damage to the cord or plug, please stop the use of the appliance. It must be replaced or repaired by the manufacturer, its service agent or similarly qualified persons in order to avoid a hazard.
- 4) If the appliance is used in a bathroom, unplug after use. The proximity of water presents a hazard even when the appliance is switched off. For additional protection, the installation of a residual current device (RCD) having a rated residual operating current not exceeding 30 mA is advisable. Ask your installer for advice.
- 5) Do not use the appliance for any other purpose than drying hair.
- 6) Do not handle any part of the plug or appliance with wet hands.
- 7) Do not unplug by pulling on the cable. To unplug, grasp the plug, not the cable.
- 8) Do not stretch the cord or place the cord under strain. Keep the cord away from heated surfaces and do not wrap the cord around the appliance.
- 9) Do not use any lubricants, cleaning agents, polishes, or air fresheners on any part of the appliance. Contact L'Oréal Professionnel x Zuvi AirLight Pro Aftersales Service when service or repair is needed. Do not disassemble the appliance as incorrect reassembly may result in an electric shock or fire.
- 10) If the appliance is not working as it should, has received a sharp shock, has been dropped, damaged, left outdoors, or dropped into water, do not use and contact L'Oréal Professionnel x Zuvi AirLight Pro Aftersales Service.
- 11) Before maintenance, or before cleaning the dust filter, please turn off the power of the product and unplug it.
- 12) While the infrared light system can dry at cooler temperatures, it still generates heat. Be careful to not keep the appliance too closely to your head for an extended period.
- 13) The optical filter glass may be hot during use, please use with caution and don't touch the glass after use.
- 14) The styling accessories may become hot during or after they are used. Be careful when removing these attachments, wait for when they are cool.
- 15) The styling accessories may become hot during or after they are used. Be careful when removing these attachments, wait for when they are cool.

- 16) Do not drop small pieces into the air outlet of the hair dryer, to avoid damaging the device.
- 17) Do not place or store appliance where it can fall or be pulled into a tub or sink.
- 18) Never block the air openings of the appliance or place it on a soft surface, such as a bed or couch, where the air openings may be blocked. Keep the air openings free of lint, hair, and the like.
- 19) Never use while sleeping.
- 20) Do not place appliance on any surface while it is operating.
- 21) While using the appliance, keep your hair away from the air inlets.
- 22) The appliance should never be left unattended when plugged in. If you are no longer using the product, turn off and unplug the device.
- 23) If the appliance falls into water, UNPLUG IT immediately. DO NOT reach into the water.
- 24) Do not use an extension cord with this appliance.
- 25) Do not operate with a voltage converter.
- 26) This hair dryer has an Appliance Leakage-Current-Interrupter to protect immersion (only available in the US). In the event of immersion, the protective device will not allow the appliance to operate. Periodically check the safety plug to verify that it is in proper working order. Simply press the TEST button during operating. The appliance should stop immediately. To resume operating, press the RESET button. If the TEST button does not work properly, contact Aftersales Service.
- 27) Do not use while bathing.
- 28) Do not use attachments not recommended by the manufacturer.
- 29) Do not use outdoors or operate where aerosol (spray) products are being used.
- 30) Do not direct hot air toward eyes or other heat-sensitive areas.
- 31) ☐ Means DOUBLE INSULATION

SAVE THESE INSTRUCTIONS

FCC Statement

(US SKU only, no need for EU language)

This equipment has been tested and found to comply with the limits for a Class B digital device, pursuant to part 15 of the FCC rules. These limits are designed to provide reasonable protection against harmful interference in a residential installation. This equipment generates, uses and can radiate radio frequency energy and, if not installed and used in accordance with the instructions, may cause harmful interference to radio communications. However, there is no guarantee that interference will not occur in a particular installation. If this equipment does cause harmful interference to radio or television reception, which can be determined by turning the equipment off and on, the user is encouraged to try to correct the interference by one or more of the following measures:

- Reorient or relocate the receiving antenna.
- Increase the separation between the equipment and receiver.
- Connect the equipment into an outlet on a circuit different from that to which the receiver is connected.
- Consult the dealer or an experienced radio/TV technician for help.

To assure continued compliance, any changes or modifications not expressly approved by the party.

Responsible for compliance could void the user's authority to operate this equipment. (Example- use only shielded interface cables when connecting to computer or peripheral devices).

This equipment complies with Part 15 of the FCC Rules. Operation is subject to the following two conditions:

- (1) This device may not cause harmful interference, and
- (2) This device must accept any interference received, including interference that may cause undesired operation.

The device has been evaluated to meet general RF exposure requirement. The device can be used in portable exposure condition without restriction.

Compliance Information

Supplier's Declaration of Conformity

We,

Zuvi Inc

Address: 1209 Orange Street, Wilmington, New Castle, Delaware 19801

Internet contact information: www.ZuviLife.com

as the responsible party, declares that the below product has been test according to FCC rules and compliant with FCC rules and regulations.

Product Name: AirLight Pro (TBD)

Model Number: HS200 (TBD)

Please be advised

This device complies with Part 15 of the FCC Rules. Operation is subject to the following two conditions: (1) This device may not cause harmful interference, and (2) This device must accept interference received, including interference that may cause undesired operation.

App connectivity

AirLight Pro App, your gateway to an enhanced digital experience with the device, requires the following system specifications for optimal performance:

- | | |
|-------------------------|---|
| iOS Users | - iOS 13.0 and above, including iPadOS 13.0 and above. |
| Android Users | - Android 8.0 (Oreo) and above. |
| Bluetooth Compatibility | - Bluetooth 5.0 and above for advanced connectivity features. |

Maintenance

Cleaning the filters

This device has two filters, located at the back and the end of the handle, to protect the device from dust, dirt and spray. Please clean the filters based on notifications on the built-in display, or when you notice any performance drop or find excessive dirt on the filter. Follow the steps shown on the screen to clean the filter, and restart the device to resume use.



WARNING, DO NOT install a wet filter into the hair dryer.

Clean the outer case

Before cleaning the optical filter glass, please turn off the hair dryer, unplug it, and let it cool to room temperature. Clean the surface of the device and attachment with dampened cloth. Please do not use other chemical / cleaning products to clean the device.

Clean the optical filter glass

Before cleaning the optical filter glass, please turn off the hair dryer, unplug it, and let it cool to room temperature. The filter glass has oleophobic (oil/grease resistant) coating. Use a lint-free cloth to wipe the cover glass surface to remove fingerprints or other stains.

The oleophobic coating will weaken over time. Wiping the cover glass with abrasive materials will quickly weaken the coating's effectiveness and may scratch the glass. Please do not use other chemical / cleaning products to clean the device.




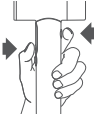

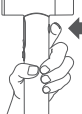

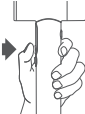
WARNING, make sure the device is completely dry before turning it on.

Factory reset

You can reset this device to factory settings. By factory reset, the device will

- Allow you to choose device language
- Forget previous App connections
- Restore mode settings to default
- Restore device name, avatar and greetings.

You can reset this device via the App, or you can reset it with the following steps.

Built-in display	Instruction	
		Press & hold both buttons to summon the QR code
		Press & hold the Cool Shot button for 3 sec, then the circle appears. Keep holding to enter factory reset.
		Press & hold the Mode button to confirm factory reset.

Troubleshooting

You can find the error code in the lower part of the display, starting with #. Please refer to this number when diagnosing with Aftersales Service.

Warranty

Warranty Period

Starting from the date of purchase, this device will have 24 months warranty, subject to the terms of the guarantee.

Covered by Warranty

The repair or replacement of your appliance is covered, if it is found to be defective due to faulty materials, workmanship or function within 24 months of purchase or delivery. You shall provide (initial and any subsequent) proof of purchase or delivery.

Not covered by warranty

We do not guarantee the repair or replacement where a defect is the result of:

- Damage caused by not carrying out the recommended appliance maintenance.
- Accidental damage, faults caused by negligent use or care, misuse, neglect, carelessness or operation or handling of the appliance which is not in accordance with the User Manual.
- Use of the appliance for anything other than as a hair dryer.
- Use of parts and accessories which are not genuine L'Oréal Professionnel Paris x Zuvi components.
- Use of parts not assembled or installed in accordance with the instructions.
- Repairs or alterations carried out by parties other than the authorized agents.
- Normal wear and tear.
- Damage caused by external force.
- Out of warranty period.

Specifications

AirLight Pro

Dimensions	265 × 98 × 84mm
Weight	615g
Rated Power	2100W (EU/UK/India) / 1875W (US)
Rated Voltage	230V~, 50Hz (EU/UK/India) / 125V~, 60Hz (US)
Operating Temperature	5~40°C
Bluetooth specification	Bluetooth 5.3
Operating Frequency	2400~2483.5MHz
Transmitter Power (EIRP)	<0dBm
Other RF specification	
Operating Frequency	119~135KHz
Transmitter Power (EIRP)	<-20dBm

This content is subject to change.
Please find the latest version on our official website.

Contact Us

Official website: www.zuvi.us