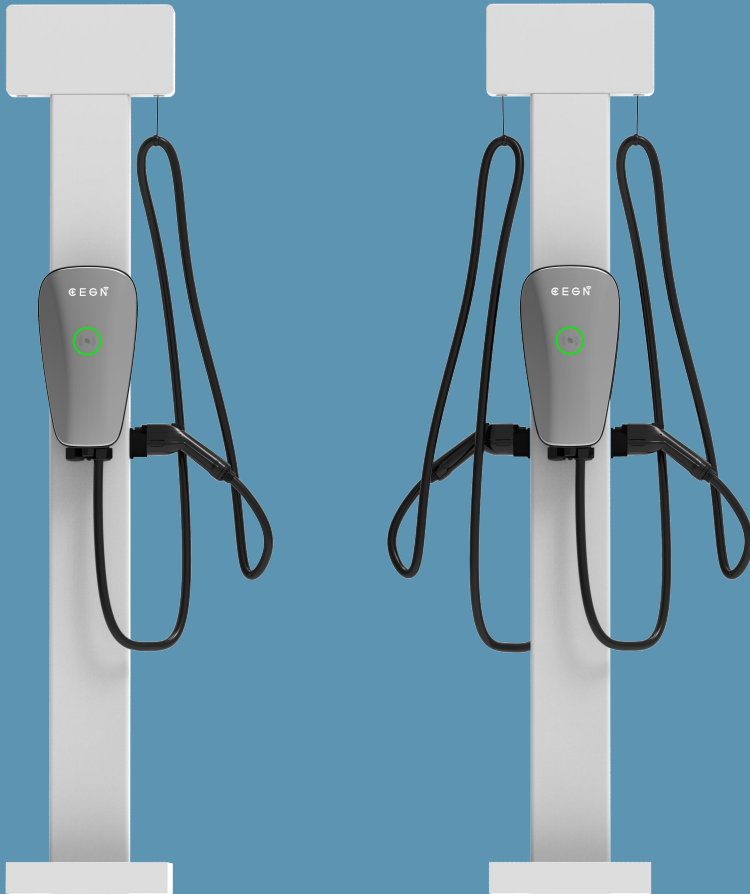


## User Manual

### CDW543U Series Integrated AC Charger

---





# Catalogue

Important safety instructions .....	3
1 information .....	3
1.1 safety instructions .....	3
1.2 Copyright Description .....	10
1.3 Expected use .....	10
1.4 Use responsibilities .....	11
1.5 Product overview .....	13
2 Installation .....	17
2.1 Expected preparation .....	17
3 Precautions before use .....	23
3.1 Instructions for use of Ethernet .....	23
3.2 4 Instructions for use .....	23
4 Charging .....	23
4.1 Safety information .....	24
4.2 Start charging .....	25
4.3 Stop charging .....	25
5 Charging instructions .....	30
5.1 Indication of indicator light .....	30
6 Common faults .....	32
7 Maintenance .....	33



---

8 After-sales maintenance .....	35
8.1 Inspection method .....	35
8.2 Repair/Replace Parts and Components .....	38
8.3 Upgrade method .....	38
8.4 Maintenance and Training .....	38
9 Disposal .....	39



# Important safety instructions

**This manual contains important instructions that should be followed when installing, operating and maintaining equipment. Please read all the instructions before using this product.**



Warning: The manual contains important instructions for using "CDW543U".

When using electrical products, always follow the basic precautions, including the following.

## **1 information**

### **1.1 safety instructions**

Before installing, debugging and running this equipment, please carefully review this manual and consult qualified contractors, licensed electricians and professionals to ensure compliance with local building codes, climatic conditions and installation standards. Our company is not responsible for the damage caused by not following the safety instructions and operating instructions in this manual.

### **Instructions on electric shock or other hazards**



This sign indicates that it is likely to cause death or serious injury.

(1) Electric shock risk-before use



There are dangerous voltages and currents in the operation of charging piles. Therefore, please take the following protective measures before carrying out any work on the equipment:

- Before installing the charging pile, please disconnect all power supplies. Failure to do so may lead to electric shock, damage to the electrical system and installation equipment or personal injury.
- Do not remove the circuit protection device or other components before all power supplies are disconnected.
- Ensure that the work area is protected from unauthorized personnel.
- The grounding terminal of charging pile must be reliably grounded.
- Use a measuring instrument to check whether there is voltage.
- When connecting the main distribution cable, use the correct protection.

(2) Risk of electric shock-in operation

- Do not use charging piles to charge equipment other than the electric vehicles mentioned in the intended use.
- Do not touch the stylus of the charging gun during operation.
- If the cable of the charging gun is worn or the insulation is damaged, do not use the charging pile.
- If the charging pile shows signs of damage, do not use the charging



pile.



This sign indicates the content of "very likely to cause injury or property damage".

- When not in use, please insert the charging gun head into the special charging seat.
- Do not use this product if the flexible power cord or electric vehicle cable is worn, the insulation is damaged or there are any other signs of damage.
- Damaged cables can only be replaced by professionals.
- If the housing or vehicle connector is damaged, cracked, opened or shows anything, do not use the charging pile.
- Be careful to trip over the cable of the surrounding gun line.
- Always hang the charging cable on the provided empty gun holder after use.
- Equipment using pressure connectors (torque wrenches) for field wiring must provide instructions on the range or nominal value of tightening torque applicable to connector terminal screws.
- Any maintenance work and replacement of parts on the equipment can only be provided by our company, otherwise the warranty period



---

will be invalid.

- Damaged or illegible safety signs must be replaced.
- Charging piles can only be installed by licensed contractors or licensed professionals.
- To ensure the entrance protection level of 3R, all external interfaces should be fully sealed.
- Do not put your finger in the connector of the electric car.
- Warning notices, warning symbols or other signs attached to charging piles shall not be removed.
- Children and the elderly should be supervised when they are used around.
- In order to reduce the risk of fire, according to the National Electrical Code/70 and the Canadian Circuit Code Part I 22.1, only connect to the circuit with overcurrent protection of # amp maximum branch circuit.

Note (#)

Model	Current Rating
CDW543U-A10	50 A
CDW543U-A08	40A



**About the wireless part**

- This device contains license-exempt transmitter(s)/receiver(s) that comply with Innovation, Science and Economic Development Canada's license-exempt RSS(s). Operation is subject to the following two conditions:
  - (1) This device may not cause interference.
  - (2) This device must accept any interference, including interference that may cause undesired operation of the device.

L'appareil contient un émetteur / récepteur exempté de licence conforme au CNR exempté de licence d'innovation, sciences et développement économique Canada. Les opérations sont soumises aux deux conditions suivantes:

- (1) Cet appareil ne peut pas causer d'interférences.
- (2) l'appareil doit accepter toute interférence, y compris celles qui peuvent entraîner un fonctionnement indésirable de l'appareil.



- This Class B digital apparatus complies with Canadian ICES-003.

Cet appareil numérique de la classe B est conforme à la norme NMB-003 du Canada.

- This device complies with Part 15 of the FCC Rules. Operation is subject to the following two conditions: (1) this device may not cause harmful interference, and (2) this device must accept any interference received, including interference that may cause undesired operation.
- Caution: The user is cautioned that changes or modifications not expressly approved by the party responsible for compliance could void the user's authority to operate the equipment.
- Note: This equipment has been tested and found to comply with the limits for a Class B digital device, pursuant to part 15 of the FCC Rules. These limits are designed to provide reasonable protection against harmful interference in a residential installation. This equipment generates uses and can radiate radio frequency energy and, if not installed and used in accordance with the instructions, may cause harmful interference to radio communications. However, there is no guarantee that interference will not occur in a particular installation. If this equipment does cause harmful interference to



radio or television reception, which can be determined by turning the equipment off and on, the user is encouraged to try to correct the interference by one or more of the following measures:

- Reorient or relocate the receiving antenna.
- Increase the separation between the equipment and receiver.
- Connect the equipment into an outlet on a circuit different from that to which the receiver is connected.
- Consult the dealer or an experienced radio/TV technician for help.
- This transmitter must not be co-located or operating in conjunction with any other antenna or transmitter. This equipment should be installed and operated with a minimum distance of 20 centimeters between the radiator and your body.
- Cet émetteur ne doit pas être Co-placé ou ne fonctionnant en même temps qu'aucune autre antenne ou émetteur. Cet équipement devrait être installé et actionné avec une distance minimum de 20 centimètres entre le radiateur et votre corps.



## **1.2 Copyright Description**

The ownership and all intellectual property rights of this User Manual (this Manual), including but not limited to the contents and data contained in this Manual, are owned by our company.

This manual can only be applied to the operation or use of charging piles. Without the prior written permission of our company, it is not allowed to copy, store or transmit any part of this manual in any form or by any means (electronic, mechanical, photocopying, recording or other means).

Although the information in this manual has been carefully checked to ensure its accuracy, it does not guarantee the completeness of the content, including but not limited to product specifications, functions and illustrations.

The Company shall not be liable for any direct, special, accidental or indirect damage or any economic consequential damage (including loss of profits).

The company reserves the right to make changes at any time without prior notice.



### 1.3 Expected use

Charging piles are developed, manufactured, tested and recorded according to safety standards. If you strictly follow its intended use and safety instructions, this product will usually not cause property damage or any impact on personal safety. Please strictly follow the instructions contained in this manual, otherwise it may cause danger or make the equipment inoperable.

This equipment can only be used for charging the following electric vehicles:

- Charging interface conforms to **TYPE 1**.
- **The charging pile complies with UL2231, UL2594, UL991 and UL1998.**

In addition, the following conditions apply to the intended use:

- Charging piles must be installed fixedly.
- Charging piles can be installed on walls or columns.
- Charging piles can be used indoors and outdoors.

The following uses are not considered as expected:

- Car charging that does not meet the above charging interface is not supported.



## **1.4 Use responsibilities**

- As a user of the charging pile, you need to be responsible for your own safety and correct use, especially for particularly vulnerable people (such as children and the elderly), and ensure that these people keep a sufficient safe distance from the charging pile and charging cable.
- Please consider the emergency route at the installation site, and it is convenient to escape in case of emergency.
- Do not install the equipment in a potentially explosive atmosphere area (explosive area).



## 1.5 Product overview

### 1.5.1 Introduction of product parameters

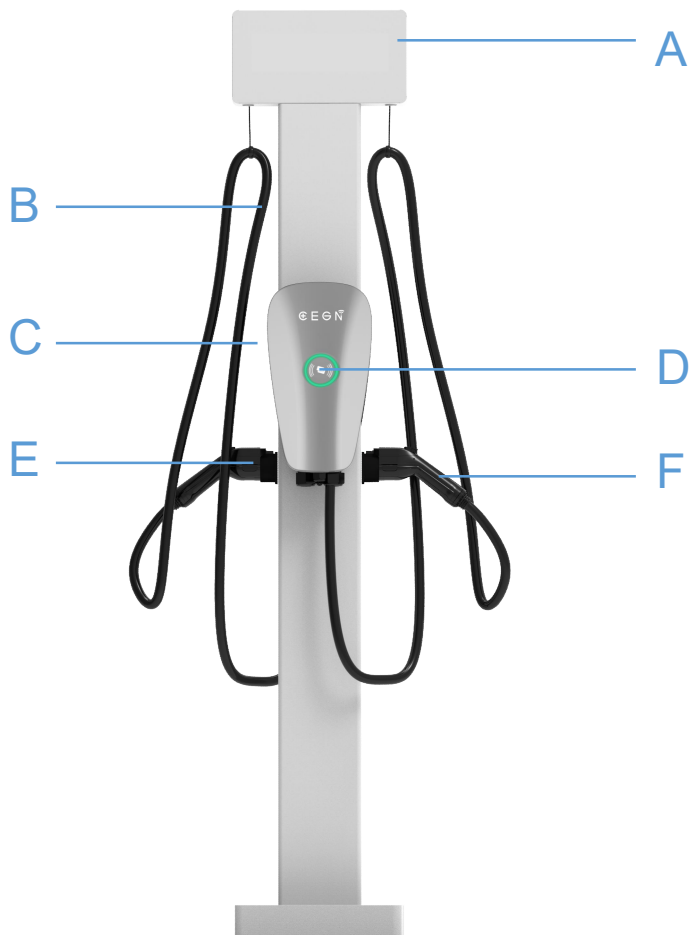
	type	parameter
product mix	Installation mode	Wall hanging or column installation
	Shell material	PC
	Heat dissipation mode	natural cooling
	the protection grades	NEMA 3R
Electrical parameters	Input cable	NEMA 14-50 Cable+Plug
	Power supply	L1, L2, PE (two-wire compatible zero line)
	input voltage	240/208V
	output rating	7.6kW/32A 9.6kW/40A
	frequency	60 Hz
	Standby power consumption	< 5W
	Charging interface	SAE J1772
Charging interface	Length of gun line	5.4m
	Life of charging gun	≥10000 times
human-computer interaction	light emitting diode	Four colors (blue/green/yellow/red)
	RFID reader	contactless
	starting system	Public pile: swipe card/scan code Private pile: plug and charge/time charge
Communication function	protocol	OCPP1.6
	communication interface	Ethernet /Wi-Fi/4G
	Maintenance communication	RJ45/USB/ Bluetooth
environme	Working temperature	-30°C~+55°C



ntal requiremen t	Working humidity	Up to 85% at 50°C does not condense.
	Storage humidity	Up to 95% at 50°C does not condense.
	Storage temperature	-40°C ~ +70°C
	Working altitude	≤2000m
Safety function	GFCI	Do not provide an external GFCI because it may conflict with an internal GFCI(CCID).
	Overvoltage protection	support
	overpower protection	support
	Leakage current protection	20mA CCID with automatic retry function
	Open circuit safety grounding detection	Continuously monitor whether there is a safe (green line) grounding connection.
	Plug-in detection	The power supply termination conforms to SAE J1772 specification.
	Overtemperature protection	support
	Overtemperature protection	support
	low-voltage protection	support
	Short circuit protection	support
	ground protection	support
	surge protection	support
	EMI compliance	FCC part 15 class b



### 1.6.2 Product appearance introduction



A: take-up device

C: charging pile

E: empty gun holder

B: upright post

D: indicator lights & swipe zone

F: charging gun



---

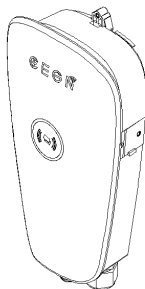
### 1.6.3 Introduction of delivered parts

---

#### Description of parts

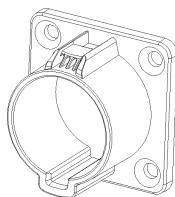
---

##### Pile body



---

##### Empty gun seat



---

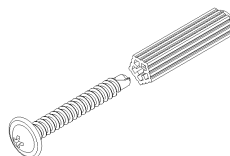
##### Mounting fittings



Cross recessed pan



head screw wall mounting assembly



Cross recessed pan head  
tapping screw rubber

---



When you receive the product packaging, please check whether there is any damage in the outer box that adversely affects the internal products. When there is obvious damage, you can communicate with your logistics provider to return the products, or you can check the products in detail by opening the outer box to confirm whether they meet the product requirements.



CDW543U series AC Charger products are precision electronic equipment. Please take them out of the package and do not bump or fall during use.

Do not cut or scratch the shell of the charging pile with sharp objects.

The charging gun cable has power bearing function. Please do not cut or scratch the cable insulation.

## **2 Installation<sup>1</sup>**

### **2.1 Expected preparation**

#### **2.1.1 Installation conditions**

Charging piles can be installed in indoor and outdoor environments, and the installation conditions and protection measures on site need to be considered:

- The installation distance should be selected to ensure that the WiFi signal is effective.
- The installation environment of the charging pile should match the



protection level of the shell of the charging facility, and avoid damp, stagnant water, dust and explosive environment, heat sources and corrosive objects.

- When installed outdoors, it is suggested to increase canopy protection to reduce the risk of water ingress and prolong the service life of the product.
- The place where the charging pile is used shall ensure that sufficient power access load capacity is reserved, and the voltage and power quality meet local standards.
- In areas with frequent thunderstorms, please add surge protection in front of all charging piles to ensure that all power supply and grounding connections, especially circuit breakers and bus connections, are clean and tight. All conductors and terminals shall be cleaned of oxides before wiring.
- Charging pile is a kind of continuous loading equipment, and the rated load of the circuit must be 125% of the maximum load.
- According to local regulations, ensure that the electrical panel supports 240V dedicated circuits and is equipped with a new dedicated non-GFCI bipolar switch.

**Note: If local regulations require plug-in installation of GFCI circuit**



**breakers, it is recommended to use hard-wired installation. We do not recommend using GFCI circuit breakers because charging piles are protected by CCID. Using GFCI circuit breakers in the panel may cause troublesome tripping.**

- The site selection, installation and construction of charging piles shall comply with local regulations and installation standards, and professional installers and qualified construction units shall be selected.
- The emergency route of the installation site should be considered.
- The installation position is convenient for charging, and the wiring length should be shortened when laying the line to reduce the cable loss.
- During column installation, the position should not be set in a low-lying place, which is easy to accumulate water or drip. The installation should be vertical, and the center of gravity should not be too high to prevent overturning or tilting. It should not be set in a place with severe vibration or high temperature. The column should be installed on a concrete foundation not less than 30cm high.
- During wall-mounted installation, the charging pile is connected to the wall at least two points, and the pile body cannot be removed



without tools. The installation wall should bear the gravity of the charging pile and its accessories, and should not be too close after installation. At the same time, the wiring on the wall should not be too close to the internal circuit.

- Ensure that the grounding wire is reliably connected to the grounding wire of the power supply system nearby (note: it is strictly forbidden to connect this grounding wire with any circuit breaker, such as fuse, air switch, knife switch, changeover switch, etc.; The cross-sectional area of grounding wire must meet the requirements of local electrical regulations. ) 。
- A certain space should be reserved for the installation of charging piles, which is convenient for engineers to carry out maintenance operation space, inspection and maintenance.
- Comply with all applicable laws and regulations, and obtain the permit to complete electrical works as required.

### **2.1.2 Installation risk notification**

- The strength of the installation position must meet the requirements, and all fixing bolts should be tightened, otherwise the risk of falling and dumping will occur.

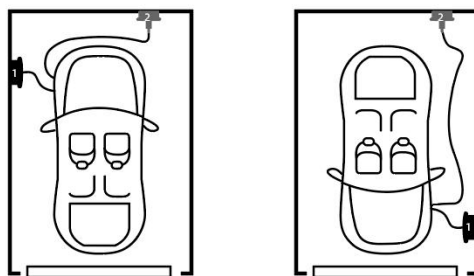


- Cables, terminals and other components selected for installation should meet the current requirements. Before and after installation, all wiring related to charging equipment should be secured, well insulated and correctly wired, without the risk of abrasion and crushing, otherwise there will be fire and electric shock risks.
- Please carry out construction in accordance with relevant construction safety regulations and standards to avoid safety accidents.
- The incoming line of power supply must be fixed to ensure firmness and reliability, so as to prevent pulling off and avoid potential safety hazards.
- After wiring, ensure that all holes entering the charging pile are well blocked, otherwise there is a risk of foreign matter or water vapor entering.
- After installation, ensure that all electrical components, protective shells, insulating sleeves and other devices are not lost, otherwise there will be the risk of electric shock.
- Before the equipment is powered on, please make sure that the equipment is well grounded (including the bracket) to avoid electric shock.



- If the pile is found to be damaged, please stop the installation and use immediately.
- The output of the charging pile is high voltage. Please pay attention to personal safety when using it. Children are forbidden to touch the charging pile.

### 2.1.3 Schematic diagram of installation space



① Recommended location ② Alternative location

### 2.1.4 Installation

For detailed installation steps, please refer to the 《Quick Installation Manual for CDW543U Series Chargers v1.0》.



### **3 Precautions before use**

- After the installation of the charging pile is completed, the power supply should be connected as required;
- If you use Ethernet connection, please ensure that the network is unobstructed;
- Please charge the electric vehicle according to the operation flow of the user manual.

#### **3.1 Instructions for use of Ethernet**

Before leaving the factory, the equipment will be configured according to the needs of users. If users need to change the configuration, they need to contact our after-sales engineers for technical support.

#### **3.2 4 Instructions for use**

Before leaving the factory, the equipment will be configured according to the user's requirements. When using the equipment, the user only needs to insert the card. Once the equipment is connected to the network, it will be activated. There is network traffic in it. Please use it within the validity period. According to the regulatory requirements, the



card may be bound to the charging pile when it is activated, and the card will not be used on other devices after being bound.

**If users need to change the configuration, they need to contact our after-sales engineers for technical support.**

## **4 Charging**

### **4.1 Safety information**

- Never disconnect the circuit breaker at will during charging.
- It is forbidden to use charging piles in case of equipment failure, and do not operate them without authorization if charging is abnormal.
- If you find an emergency, please contact the staff in time, and press the emergency stop switch on the charging pile or disconnect the circuit breaker to stop charging.
- Do not maintain the charging equipment when the power supply is not cut off, which may cause electric shock.
- Please operate in strict accordance with the user's manual of the charging pile, the operating procedures and tips on the equipment, otherwise there is a risk of electric shock and fire.
- In case of fire, flooding of charging piles, etc., it is strictly forbidden to get close to charging equipment. Please inform the personnel



familiar with the equipment and emergency treatment methods in time for emergency treatment.

- When children move around the charging pile, the guardian should take good care to avoid accidents such as electric shock.
- Pay attention to the activities of pets, poultry and other animals when charging, and the guardian should take good care to avoid accidents such as electric shock.

## **4.2 Start charging**

- **Precondition**

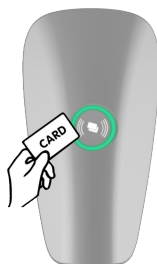
The charging gun is not plugged into any vehicle.

Charging pile is in standby state (offline: green light is always on online: blue light constant)

- **Operating procedure**

Step 2: Place the IC card in the card swiping area for about 3~5s, and remove the IC card when you hear a "drip".





Step 3: When the light effect of the charging pile turns to blue running water light, it means that charging has started.

Step 4: (Stop charging) Stop swiping the card again, and remove the IC card after hearing "drip".

Step 5: Wait for the settlement to be completed, and the light effect will turn green/blue.

### **Code scanning/background charging**

Step 2: (If there is a QR code startup function in the connection background) APP scans the QR code on the pile or connects the charging pile in other ways.

Step 3: Start the charging pile according to the operating instructions of APP/background start charging.

Step 4: When the lighting effect of the charging pile changes to a blue



running water light, it indicates that charging has started.

Step 5: APP stop/background stop

Step 6: Wait for the settlement to be completed, and the light effect will turn green/blue.

### **Bluetooth charging (configuration required)**

The mobile app store searches for the "CEGN"APP and downloads it. There is no need to log in. The mobile phone needs to turn on Bluetooth, keep the distance from the electric pile no more than 10 meters, and scan the code to bind the device.

#### **1, charging for the first time**

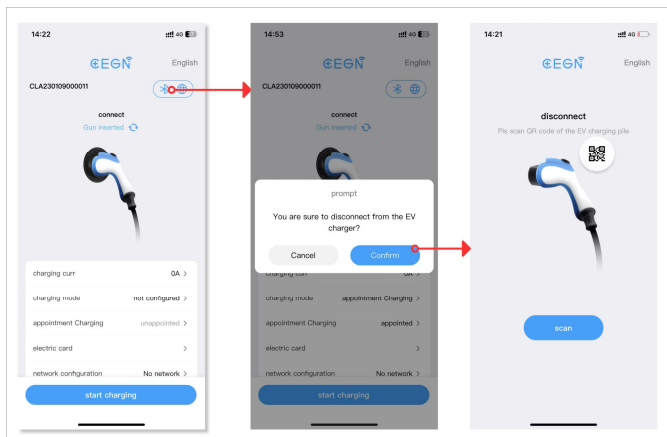
Step 1: Click the "Scan Code" button below and aim at the QR code of the nameplate on the left side of the charging pile machine.



Step 2: After scanning the code, enter the charging startup page. You need to manually enter the mobile phone number for verification and binding.

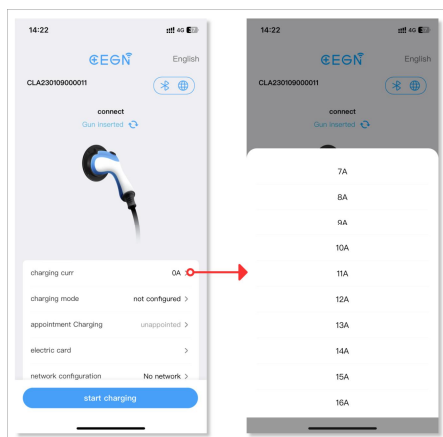


The mobile phone number can be 6-15 digits (only needed for the first time).



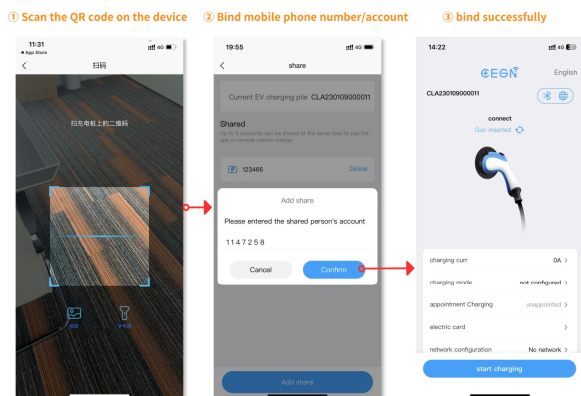
Step 3: After scanning the code, if the charging gun has been inserted, you can click the "Start Charging" button below to directly start charging, and the status of the page pile will change from "Inserted Gun" to "Charging".





## 2, subsequent charging use

The account/user who has bound the device only needs to scan the QR code on the device to enter the page of starting charging, and click the "Start Charging" button at the bottom of the page to start charging.



Tips: Bluetooth charging also has "charging personalization settings", including charging current setting, charging mode selection, binding new electric cards, OCCP



configuration and device sharing, etc. For details, please refer to the Offline Bluetooth APP- User Manual.

### 4.3 Stop charging

Step 1 Do not use brute force to pull the mechanically locked gun out of the socket (users who have not swiped the card can skip the swiping step).

Step 2 Pull out the charging gun on the vehicle.

Step 3 put away the charging gun, put the gun in the place after winding the gun wire around the pile.

## 5 Charging instructions

### 5.1 Indication of indicator light

Lighting effect description

1	Standby _ Rechargeable _ Network not connected	Green light constant
2	Standby _ Rechargeable _ In Network Connection	Green light flowing water
3	Standby _ Rechargeable _ Normal network connection	The blue light is always on.
4	Reservation _ Rechargeable/Starting	The green light blinks slowly for 1s (the reservation period blinks).



5	Upgrading	Yellow running water lamp
6	Charging	Blue running water lamp
7	The vehicle actively disconnects the charging.	Blue light 2s- blinks twice-blue light 2s
8	Charging _ trickle	Slow blue running water lamp
9	malfunction	Yellow light (operable)
10		Red light (inoperable)

### Abnormal state description

serial number	Abnormal type	Abnormal indicator light
1	Abnormal voltage	Always on 2s-> flashing for 3 times-> always on 2s
2	Overcurrent anomaly	Always on 2s-> flashing 4 times-> always on 2s
3	Overtemperature anomaly	Always on 2s-> flashing 7 times-> always on 2s
4	Leakage anomaly	Always on 2s-> flashing 9 times-> always on 2s
5	Signal anomaly	Always on 2s-> flashing for 10 times-> always on 2s

### Fault state description

serial number	Abnormal type	Abnormal indicator light
1	PE disconnection	Always on 2s-> flashing twice-> always on 2s



2	Contactor adhesion	Always on 2s-> flashing 5 times-> always on 2s
3	Abnormal fault of electric meter or metering unit.	Always on 2s-> flashing 6 times-> always on 2s

## 6 Common faults

serial number	breakdown	Fault phenomena and routine troubleshooting methods
1	The indicator light is not on.	Ensure that the power input is connected correctly and the power supply is within the working range of the unit. Ensure that the power switch is closed. Damage, please contact customer service.
2	Unable to charge normally	Charging gun is not inserted correctly. Plug and unplug the charging gun again, and confirm that the gun has been connected successfully. The charging process was not performed correctly. Please follow the instructions in the chapter "4.2 Start charging". The charging gun may be dirty or damaged in the locked area. Clean or replace the gun Please confirm that the vehicle terminal is configured normally. Please refer to the vehicle instruction manual. Damage, please contact customer service.
3	Not fully charged or increased charging time	The current drops due to excessive temperature of the vehicle or charging pile. Visually check whether the plug-in device is dirty, worn or damaged.



		Charging stopped due to external control device (power supply equipment) Damage, please contact customer service.
4	The fault status lights up in red.	breakdown The red light is flashing. Please check the possible cause of failure according to 5.1 Fault Light Description. Cut off the power supply voltage of the charging pile, pull out the charging gun on the vehicle, and turn on the power supply voltage again. Damage, please contact customer service.

If you encounter other abnormal conditions or cannot resume normal use after completing the above operations, please contact the customer service center for solution. Do not open the charging pile, touch or remove the circuit protection device or any other parts.

## 7 Maintenance<sup>2</sup>

- In order to ensure the normal service life of the charging pile and reduce the risks in the use process, it is necessary to carry out maintenance within the specified time period, and the equipment maintenance needs to be carried out by professionals and qualified and safe maintenance tools should be used;
- Check and maintain the emergency stop switch regularly to ensure its effectiveness;

---

<sup>2</sup> Note: Non-professionals are forbidden to disassemble the equipment components.



- Shading and lightning protection measures should be taken for charging piles, and it is recommended to install a rain shelter outdoors;
- Regularly check whether all bolts in the charging pile are fastened, whether the connecting wires are loose and the connection is not reliable;
- Check whether there is a short circuit;
- Pay attention to lightning protection to ensure the effective shielding and reliable grounding of the charger;
- When in use, try to control the output voltage and current of the charging pile within the nominal range to ensure that the charging pile works in the state of maximum efficiency;
- When the charging pile stops using, the charging output should be stopped first, and then the gun wire and cable should be wound and put back in place;
- When the charging pile is in standby state, it needs to be cleaned regularly. It is strongly recommended to use a soft wet cloth with clean water and ensure that no water enters the vehicle joint.
- maintenance period



inspection item	Every month	Every three months	Every six months	Every twelve months	Treatment method
Charging gun	-	√	-	-	√
Leakage switch protection	-	√	-	-	√

## 8 After-sales maintenance

### 8.1 Inspection method<sup>3</sup>

Charging name		Charging equipment number	
1	Equipment appearance	Execution record	Deal with suggestions
1.1	Does the indicator light show normal?		If any problem is found, please check whether there is any problem with the wiring first; If the wiring is correct and the charging is normal, please replace the indicator light.
1.2	Check whether the paint layer of the equipment is clean, whether the shell is deformed		If problems are found, contact relevant staff to repair the equipment; If it cannot be

<sup>3</sup> Note: If the equipment is operated by the station, it is the basis for after-sales maintenance; If it is not the station equipment, it is the daily inspection basis for users.



	and whether it is fixed well.		repaired, please return to the original factory for repair.
1.3	Check whether the charging gun is plugged and unplugged normally, whether there are foreign objects and whether the charging gun wire is damaged.		If problems are found, please contact the manufacturer for factory repair.
1.7	Check whether the relevant identification and operating instructions of the equipment are clear and complete.		If you find that the logo and operating instructions are covered by stains, please wipe them with alcohol.
1.8	Check the water accumulation at the top of the charging equipment.		If there is water, please dry it immediately after the rain stops.
1.9	Use multimeter to measure whether the charging equipment output interface is charged or not.		If charged, please immediately notify the relevant staff for handling.
1.10	Check whether the head (where the gun line is fixed) is tightened.		If you find that the gun line is loose, please screw it back with tools.



2	Inside the equipment	Execution record	Deal with suggestions
2.1	Check whether the screw connection between wires and electrical components is firm and reliable.		Ensure that all wires are firmly and reliably connected with the screws of electrical components.
2.2	Check whether the wiring is in good condition, and the insulation of the wire should be good without damage.		If cables and control lines are found damaged, please replace them immediately.
2.3	Check whether the cable joint is rusted and the cable hole is well sealed.		If the joint is found to be rusty, please inform the relevant staff to replace it.
2.4	Check whether all cables in the equipment are clearly marked and correct.		If the cable identification is found to be disordered, please notify the relevant staff to correct it.
2.5	Check whether the cable is pinched or twisted.		If problems are found, please remove the cable and reconnect it.
Inspection			



---

department	
Patrol personnel	
Inspection date	

## 8.2 Repair/Replace Parts and Components

During the warranty period, if the product is damaged or can't be used normally due to poor manufacturing or normal loss of devices, the company is responsible for maintaining, debugging or replacing the parts for the user free of charge. In case of any damage caused by deliberate actions such as disassembly, impact and smashing, the company will maintain, debug or replace the parts for free. After the warranty period has expired, the company will pay for maintenance, debugging or replacement of parts.

## 8.3 Upgrade method

If you need to upgrade the charging equipment, please inform our after-sales staff. The staff will go to the site to upgrade the charging equipment or upgrade the software version remotely through the platform.



## 8.4 Maintenance and Training

For equipment maintenance and user training services, please contact our customer service center.

## 9 Disposal



This sign is located on the product, instruction manual or package, indicating that electrical and electronic equipment and its accessories should be treated separately from ordinary domestic garbage.

Materials can be reused according to their marks. By reusing old equipment, materials or other forms, you can make great contributions to environmental protection.



