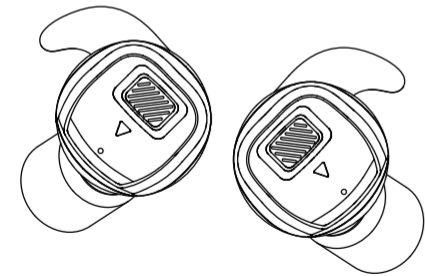


GLORYFIRE®

ELECTRONIC EARBUDS USER MANUAL



Electronic Earbud is an in-ear electronic hearing protection, which can help reduce continuous noise and impulse noise, and improve situational awareness and communication skills in severe environments. It is suitable for use in high-noise environments such as shooting training, manufacturing, and construction. The operating time is 8 hours under full power condition, and has low battery reminder function. Comes with a portable battery charging case and a retention cord, and different sizes of ear cover and foam ear tips, which can match users with different ear sizes.

SAFETY INFORMATION

Please read carefully and observe the following instructions before use. If these recommendation are not followed, may cause hearing loss or seriously affect the product use effect.
Wearing the hearing protector correctly can help reduce noise, and using it incorrectly or not wearing it may cause hearing loss or injury.
If there is a disease or infection in the ear, please consult a doctor before wearing it to avoid hearing damage.

WORKING TEMPERATURE

Operating temperature range for the earbuds: -20°C to 50°C (-4°F to 122°F)
Storage temperature range (complete kit): -20°C to 50°C (-4°F to 122°F)
Charging temperature range: 0°C to 50°C (32°F to 122°F)

FEATURES

•Multi scene switch

Three switchable sound modes

- 1.Outdoor mode - maximum sound and maximum distance
- 2.Indoor mode - normal sound and short distance
- 3.Silent mode - listen to Bluetooth audio or call

•Clear voice tracking

Self and surrounding vocal tracking and optimization, and acoustic design

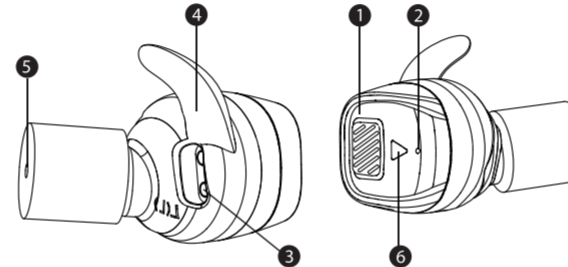
•Fast reaction core

When the quick-response gunshot sounds, the ultra-fast 0.5ms is compressed.

PRODUCT AND ACCESSORIES

- 1.A pair of electronic earbuds
(With A pair of medium ear cover & foam ear tips)
- 2.1× Portable charging case
- 3.1× Retention cord
- 4.1× Type-C data cable
- 5.A pair of small ear cover & foam ear tips
- 6.A pair of large ear cover & foam ear tips
- 7.1× User manual

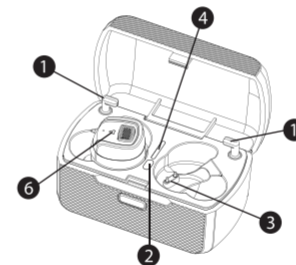
PRODUCT COMPONENTS



- 1.Power / Mode button
- 2.Microphone
- 3.Charging contacts
- 4.Ear cover
- 5.Foam ear tips
- 6.Indicator light

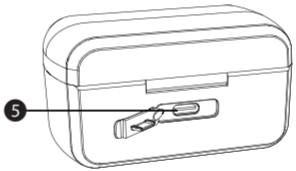
CHARGING CASE

- 1.Retention cord storage posts
- 2.Status button
- 3.Earbuds charging receptacle



- * The storage posts on sides of the charging box can be rotated 360°, and the Retention cord can be stored on the posts when not in use.
- * Charge before the first use, please tear off the insulating film on the charging slot of the earbuds, and then put the earbuds into the charging box for charging about 2 hours.

- 4.Indicator light
- 5.Type-C USB charging port
- 6.Indicator light for earbuds
(red light is charging status; red and blue light flashing alternately is power-on status)



CHARGING INSTRUCTIONS

Place the earbuds in the charging case, and use the Type-C data cable to connect the charging case to the power supply. When the circuit is turned on, it will automatically charge and the battery indicator will flash.
If the battery indicator does not flash, please check whether the charging case, data cable, and power supply are properly connected.
When charging is complete, the battery indicator status is always on.

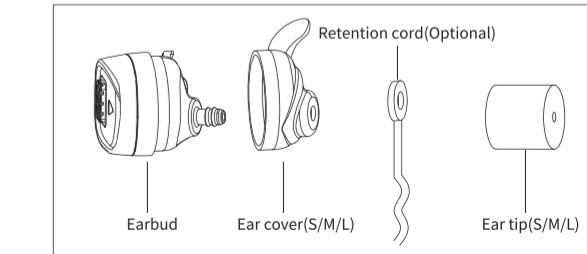
*Note:

- 1.Make sure that the charging contact of the earbuds is pointing downwards so that it is in contact with the charging point in the socket.
- 2.Please remove the stickers from the charging slots of the earbuds on both sides before use.

INSTALLATION INSTRUCTIONS

(EAR COVER, EAR TIPS, RETENTION CORD)

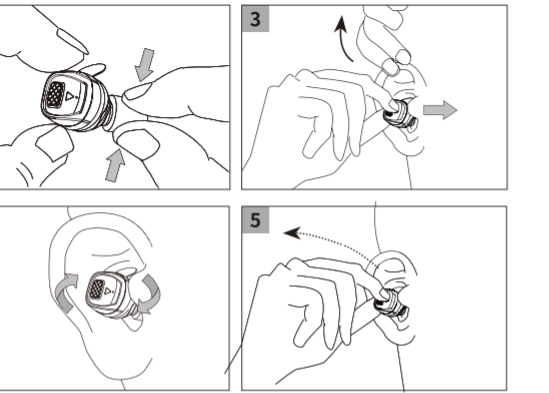
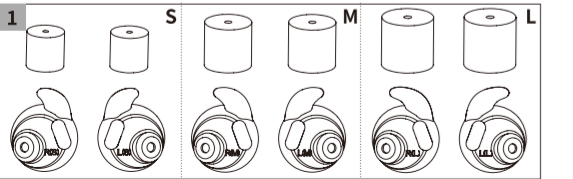
- Ear cover and ear tips are specially designed for Earbuds. Do not insert the earbuds directly into the ear if the ear cover and ear tips are not installed.
1. Wear properly sized ear cover on the earbuds according to the corresponding direction.
(Note: make sure that the fixing hole is completely consistent with the fixing post.)
 2. To wear the retention cord, please fix one end of the retention cord to the ear tip stem.
 3. Install ear tips on the ear tips stem.
 4. Make sure that the ear tips are completely fixed on the ear tip stem.



WEAR INSTRUCTIONS

Turn off the power before wearing. Keep earbuds clean before installation.

1. Choose the right ear tips size for your ear canal.
 2. Hold the earbuds to confirm that they are clean and dry, and rub the foam finely
 3. Insert the ear tips into the ear canal while gently pulling the ear upward with the other hand.
 4. Rotate the ear tips in the direction of the ear canal to ensure that it is completely fixed in the cochlea.
 5. In the case of shutdown, check that the ear tips size is appropriate.
- Try pulling the Earbuds gently to make sure it won't come loose easily.
- If it comes out easily, please repeat the above steps.



OPERATING INSTRUCTIONS:

- 1.Turn on:** The earbuds will automatically turn on after they are taken out from the charging case.
Turn on by hand: When the earbuds is turned off, you need to press and hold the button on the left and right ears for 3 seconds to turn it on respectively. Release the button when you hear the prompt sound "Power on", and the earbuds is turned on and in outdoor mode.

- 2.Mode switching:** Click any button on the left or right to adjust the mode, the order is: outdoor→indoor→mute→outdoor→indoor.
- 3.Device pairing:** Take out the earbuds, it will automatically turn on, and then enter the pairing mode (red and blue lights flash alternately), the pairing name is "GF6020", after the pairing is successful, the LED stops flashing, and the prompt sound "Connected".
- 4.Listening to music:** After the device is successfully connected, open the player and double-click the left or right buttons to play/pause the music.
- 5.Transparency mode:** During music playback, you can click the left or right buttons to adjust the mode.
- 6.Call mode:** When an incoming call is in, click the left or right buttons to answer the call, double-click the button to hang up the call, and press and hold the button for 2 seconds to reject the call.
- 7.Turn off:** The earbuds will automatically shut down after it is placed in the charging box.
Turn off by hand: Press and hold the unilateral button for 3 seconds to synchronously shut down, and the prompt sound "power off".
Automatic turn off: When not in use, the earbuds will automatically turn off after two hours, and the prompt sound "power off".

NOISE REDUCTION RATING

NRR: 26dB
Attenuation data, according to the specifications of the American National Standards Institute ANSI S3.19-1974

TEST FREQ. (HZ)	125	250	500	1000	2000	3150	4000	6300	8000	NRR
MEAN ATTENUATION(DB)	34.4	30.2	34.4	35.7	38.4	41.5	43.7	45.5	45.1	26
STANDARD DEVEATION(DB)	5.9	5.1	5.5	4.7	4.1	2.7	5.3	4.8	5.7	

WARNING

Do not disassemble, puncture, squeeze, heat or throw the battery into fire
Do not use the battery if it is severely swollen or immersed in water

FCC STATEMENT

This device complies with Part 15 of the FCC Rules. Operation is subject to the following two conditions: (1) this device may not cause harmful interference, and (2) this device must accept any interference received, including interference that may cause undesired operation.

Warning: Changes or modifications to this unit not expressly approved by the party responsible for compliance could void the user authority to operate the equipment.

Notes: This equipment has been tested and found to comply with the limits for a Class B digital device, pursuant to Part 15 of the FCC Rules. These limits are designed to provide reasonable protection against harmful interference in a residential installation. This equipment generates, uses and can radiate radio frequency energy and, if not installed and used in accordance with the instructions, may cause harmful interference to radio communications. However, there is no guarantee that interference will not occur in a particular installation. If this equipment does cause harmful interference to radio or television reception, which can be determined by turning the equipment off and on, the user is encouraged to try to correct the interference by one or more of the following measures:

- Reorient or relocate the receiving antenna.
 - Increase the separation between the equipment and receiver.
 - Connect the equipment into an outlet on a circuit different from that to which the receiver is connected.
 - Consult the dealer or an experienced radio/TV technician for help.
- Note: If shielded cables or special accessories are required for compliance, a statement must be included which instructs the user to employ them, for example, shielded cables must be used with this unit to ensure compliance with the Class B FCC limits.
- The device has been evaluated to meet general RF exposure requirement. The device can be used in portable exposure condition without restriction.
- FCC ID : 2BCU6-GF6020

How to contact us

gloryfire@amzsupport.net