



## **AUTOMATIC INDUCTION WIRELESS MICROPHONE**



**OWNER'S MANUAL**

Date \_\_\_\_\_

[illegible]

## CATALOG

<b>Procedures for the safe use</b>	1
<b>Digital pilot Series induction microphone system characteristics</b>	2
<b>Simulation of pilot Series induction microphone system characteristics</b>	3
<b>Intellisense receiver using operation</b>	4-5
<b>The use of the Digital pilot series receiver operation</b>	6
<b>The use of the Simulation of pilot series receiver operation</b>	7
<b>Intelligent induction series of the operation and use of microphones</b>	8-9
<b>Digital pilot series of main technical parameters</b>	10
<b>Simulation of pilot series of main technical parameters</b>	10
<b>Operation method and attentions</b>	11
<b>Problem &amp; Solution</b>	12

### Simulation of pilot Series induction microphone system characteristics

*Industry automatic induction hand patent technology, left hand phone static 3-5 seconds automatically mute (any direction, place both at any Angle), automatic energy saving after 5 minutes, 30 minutes and automatic shutdown completely cut off the power, is a new concept of the intelligent and automatic. The wireless microphone*



Automatic mute microphone still 3-5 seconds



Mute 5 minutes automatically turn off the launch



The state of energy saving province electricity



Mute automatic shutdown after 30 minutes

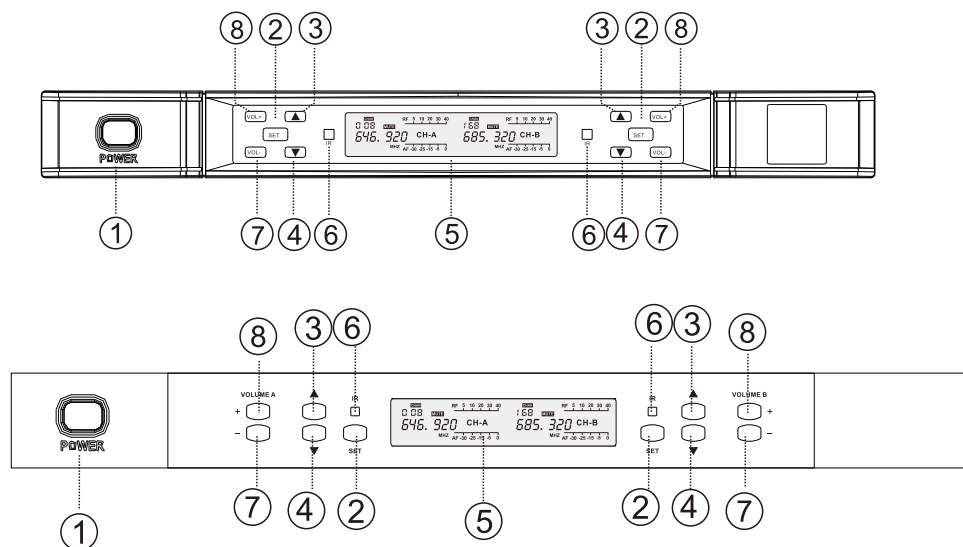
- new audio circuit structure, the high is exquisite, the low frequency is strong, especially on the details of sound with perfect performance. super
- The dynamic tracking ability makes far/near distance easy pick up charge.
- UHF frequency band, phase-locked loop (PLL) frequency synthesis
- 100 \* 2 channel, channel spacing 240 KHZ
- superheterodyne secondary frequency conversion design, have extremely high receiving sensitivity
- rf part adopts multilevel high-performance medium filter, good anti-interference ability
- the first intermediate frequency acoustic filters, the second intermediate frequency use level 3 ceramic filter, very good to improve the anti-interference ability
- especially the mute circuit design, completely eliminate the microphone turned on and off the impact of the noise
- the microphone use tesco 5 batteries, with up to 6-10 hours
- the microphone adopts unique design of booster battery down does not affect the hand cannot overall performance
- the ideal environment for operating radius of 80 meters, suitable for all kinds of requirements
- the default configuration for LCD backlight blue, mike duct aluminum alloy body
- have adjustable adjustable transmission power and noise threshold, after receiver panel is set external noise control knob, can according to need 10 m – 80 m between flexible setup effective radius of operation
- have ir automatic frequency function, can make the microphone to work fast synchronization and receiver channel
- with the function of simulation pilot, can effectively solve the false receiving noise
- KTV engineering special models, two microphone, a host. Easily configure more than 100 KTV rooms, the product structure design is unique, Quick and easy maintenance.

**Applicable occasions: suitable for high-grade KTV room, small and medium-sized performances, classroom, meeting room, etc., is this year's key new products, are extremely Customer welcome. Packing type: conventional color box packaging (see sample)**

## Intellisense receiver using operation

*This series product is composed of handheld mic and receiver, including audio output cables, batteries, frame and auxiliary installation  
Form a complete set screw, such as product specification attachment.*

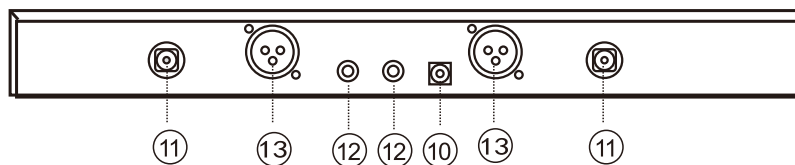
### Intellisense receiver function



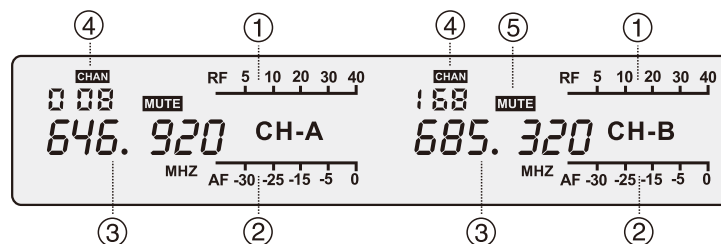
1. Power on key: press the power switch, LCD is bright, open power supply, and then press power on key 3 seconds, close the LCD, The power shut down.
2. Four function keys: according to the No. 9 the "SEL" button can choose to the left and right sides, according to the No. 3 "▲" No. 4 "▼" button on the currently selected menu State changes, then No. 2 "SET" key Settings to take effect.
5. Liquid crystal display (LCD) : display channel, mute, receiving signal level, audio power equality.
6. Frequency of infrared window: cooperate with "SET" key, will be handed to the transmitter channel parameters.
- 7/8. The volume knob

## Intellisense receiver using operation

10. Power on the socket: DC12V500mA power input socket, socket positive voltage at the center of the electrode connection.
11. Antenna jack
12. Mix audio output: mix two signals output together.
13. Audio output: suitable for long distance connection effectively reduce noise due to cable.



### Receiver LCD display



1. rf display: display received radio frequency signal strength.
2. s audio level display: display the size of the audio signal.
3. Frequency menu display: light, FREQ behind six characters display the current operating frequency.
4. Channel menu display: when CHAN, light, display the current operating frequency.
5. MUTE shows:..mute when the light is bright, said not received rf signal.
6. Channel show that the dynamic displays the current selected automatically antenna channel, on behalf of the antenna, A road **I** on behalf of the antenna B road **II**

## The use of the Digital pilot series receiver operation

### 1 , AUTOMATIC SEARCH IDLE CHANNEL FUNCTION,

In complex environment, artificial to choose no interference channel takes time, and the new system configuration the function of automatic search no interference channel,

Operating mode is as follows:

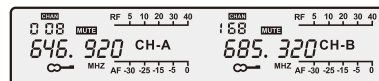
Long press "SET" key for more than 2 seconds to loosen, the host into the automatic search no interference channel function, when the host search to no interference channel

After flashing display the current search to no interference channel, the open hand, handle the mi screen location on the host "IR" The launch window, press the "SET" key once again and infrared frequency of operation.



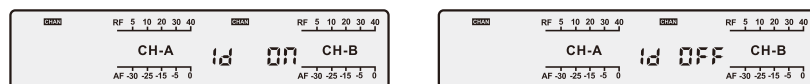
### 2 , HOST, LOCK AND UNLOCK

"DOWN" on the left side of the closed host, hold the host key (channel) boot, host and subtract the lock can be realized, if lock on a host. The "key" symbol will be displayed, if the unlock, "keys" sign is not showing on the host



### 3 , BUILT-IN HIDDEN DEBUG MODE

Hold the host at the same time the two sides of the "UP" boot up, enter the ID encryption right menu Settings. When the host shows "ID ON" Up and down key switch. ID ON OFF function is introduced and the ID, the ID is ON normal mode using Settings, in this mode, the host Forever and for the last time the frequency hand cannot use of success, ID OFF is a test mode, in this mode, the host can be answered. Accept any team as long as its frequency hand microphones. The menu is not recommended to do change, in case the string of frequency.

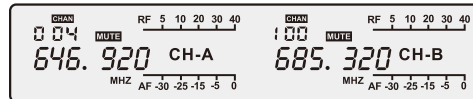


The host can only and the last time the frequency of success  
Hand to use, if appear, hand microphones and host showed the same frequency, but the host has no sound signal, to come in  
Line infrared frequency of operation at a time.

## **The use of the Simulation of pilot series receiver operation**

### **1, CHANGE THE FREQUENCY POINT.**

A, the four key host operating: around the SEL button to choose (A bright said the left B on the right), then press the "UP" and "DOWN" plus/minus the frequency point, add and subtract frequency points, the corresponding channel display will flash, then press SET to confirm the changes. Finally open hand, aim the hand at the screen position of the receiver IR window, then host once SET key, wait 2 seconds later, the frequency point. Automatically synchronized to and host frequency point. Gai PinDian completed so far. B, six key host operation: press the up and down key change directly Variable frequency point, and then press SET key, press the SET key to once again and infrared frequency of operation at a time.



### **2, HOST/UNLOCK.**

A, the host of the four buttons, in just boot mode is automatically locked, then according to the "SEL" button to automatically unlock, turn it off again. It is locked; B, host of the six buttons, press "SET" button three times to enter the "LOCK ON and LOCK OFF" menu, Press the up and down key switch can add unlock Settings, press the "SET" key to save out.

### **3, DISPLAY MODE SETTINGS.**

Four key host all can display the complete information, no adjustment options. Six key host can not display frequency at the same time Frequency point and frequency points, the factory is SET to display mode, if you want to display frequency, press the host "SET" key 2 times into the display mode Settings Menu (DISPL), "CHANNL" for the frequency display mode "CH \* \* \*", "740.25" "FREQU" for the frequency display mode. Press "SET" button to save.

### **4, DISTANCE CONTROL.**

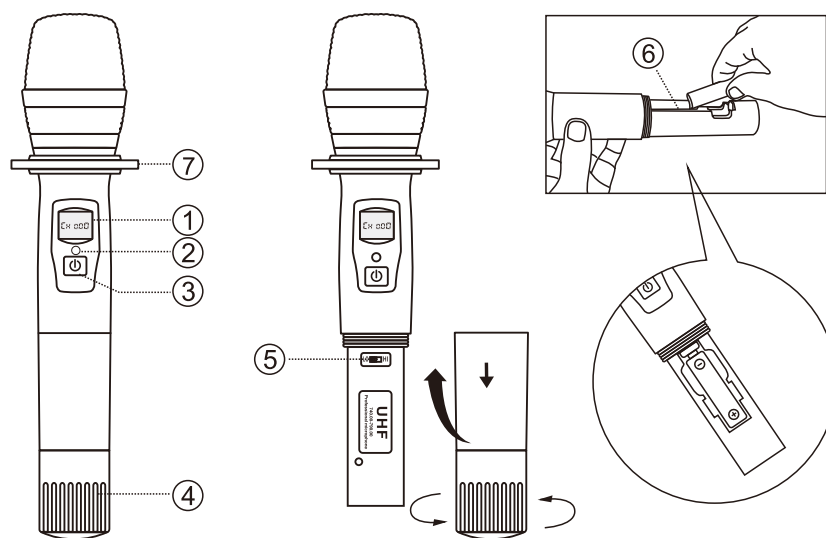
In the back of the host, the antenna seat beside a SQ potentiometer, by adjusting the SQ potentiometer can adjust the host receiving distance, shun Clockwise to the largest, receiving the furthest distance, the smaller the distance closer. In the KTV rooms when installation can be adjusted according to the actual situation. It is recommended to ensure the premise of constant frequency as far as possible to the minimum.



## Intelligent induction series of the operation and use of microphones

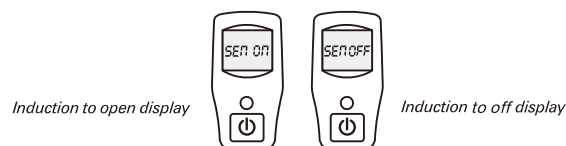
### 1, MICROPHONE, THE SHAPE OF THE STRUCTURE

- (1) LCD screen      (2) Infrared receiving window      (3) The power switch  
 (4) The tail cone      (5) High \ low power switch      (6) Battery compartments  
 (7) All landowners roll ring



### 1, THE INDUCTION FUNCTION ON AND OFF

Open hand, after the backlight goes out, hold down the power button not holding (note: don't let go, 2 seconds, will cause the microphone normal shutdown (electricity at this time Source buttons or not), after waiting for ten seconds hand microphones will be automatically switched on, and show the 'sen on' (induction function open) or 'sen off' (table Induction function in closed), then the power release button, hand microphones into normal work mode. Open and close the induction function is the same operation, simply Repeat operation. Note that the hand microphones in the process of the whole power button is not according to loosen



## ***Intelligent induction series of the operation and use of microphones***

### ***2, HIGH \ LOW POWER SWITCH***

In order to adapt to different occasions, the use of microphone designed high \ low power switch, the switch to high power "H" position, the microphone, the transmission power of the highest distance to use (effective use of open distance is about 200 meters), power consumption is bigger. When the switch to "L" low power position, microphone transmitted power is low, at close range using the effective use of about 60 meters distance (empty), less power consumption. The user can according to the actual situation to choose Settings.

### ***3, INFRARED FREQUENCY:***

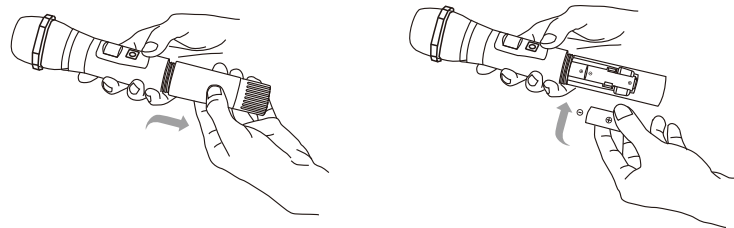
According to the host to SET key infrared frequency mode. Cannot open for specific operation way, handle, hand cannot display on the host IR launch window, press The host SET key, hand cannot automatically synchronous frequency point SET to the host.

### ***4, START-UP AND SHUTDOWN OPERATION***

Light about 2 seconds, the power button down microphone display will light up and the LCD screen will display information related work, including working frequency (channel), battery and other information. Every time must pay attention to check the battery when the phone is switched on display status, according to the practical to use the length of time to choose whether to replace the battery. In general, a pair of ordinary 5 8 hours the battery can be normal use. When the battery is 1 case, screen flashing shows LOW voltage will prompt "LOW BAT", shows that the battery is about to run out of, please replace the battery. In addition, the display backlight will automatically put out a few seconds after switch on the microphone into energy saving mode, if you need to look at the screen when using the information, press the power switch can light. Press the power switch not to put about 3 seconds, the display shows "OFF", after the microphone will be turned OFF. When the microphone when not in use for a long time, please take out the battery, circuit board to avoid battery leakage corrosion and damage the microphone.

### ***5, INSTALLATION, THE MICROPHONE BATTERIES***

Handheld microphones from the packaging, unscrew the tail cone, according to the polarity of labeled into 2 section 5, battery, and then turning the tail cone.



### ***Digital pilot series of main technical parameters***

Frequency range..... 470-608 MHZ  
Tunable channel number.....100 x 2  
Oscillation mode.....Phase-locked loop (PLL) frequency synthesis  
Frequency stability.....Plus or minus 10 PPM  
Reception mode.....Secondary superheterodyne frequency conversion  
Pilot way.....Digital pilot  
Receiving sensitivity.....- 95 - - 60 DBM  
Frequently ring tone.....40-18000 hz  
Harmonic distortion.....0.5% or less  
Signal to noise ratio.....110 db or higher  
Audio output.....Equilibrium output and mixed output  
Transmission power.....3-30 mw  
Modulation mode.....Frequency modulation (FM)  
The battery specification.....2 no.5 batteries  
Power supply specifications.....100-240 - v 50-60 hz 12 VDC power adapter (switch)  
12 VDC or 220 vac / 50-60 hz (linear power supply)  
The power consumption.....10 w or less

### ***Simulation of pilot series of main technical parameters***

Frequency range..... 470-608 MHZ  
Tunable channel number.....100 x 2  
Oscillation mode.....Phase-locked loop (PLL) frequency synthesis  
Frequency stability.....Plus or minus 10 PPM  
Reception mode.....Secondary superheterodyne frequency conversion  
Pilot way.....Simulation of pilot  
Receiving sensitivity.....- 95 - - 60 DBM  
Frequently ring tone.....40-18000 hz  
Harmonic distortion.....0.5% or less  
Signal to noise ratio.....110 db or higher  
Audio output.....Equilibrium output and mixed output  
Transmission power.....3-30 mw  
Modulation mode.....Frequency modulation (FM)  
The battery specification.....2 no.5 batteries  
Power supply specifications.....100-240 - v 50-60 hz 12 VDC power adapter (switch)  
12 VDC or 220 vac / 50-60 hz (linear power supply)  
The power consumption.....10 w or less

## Problem & Solution

### troubleshooting

Some common problems and their solutions are identified in the table below. If you are unable to solve a problem, Please contact your dealer for solutions.

Situation	Solution
No voice;(situation: the receiving machine RF display can not come on)	<ul style="list-style-type: none"> <li>• Check the transmitter and the receiving machine. see whether it is on the play of "NO"</li> <li>• Check whether the "negative" and the "positive" pole of the battery is confusing</li> <li>• Check the connecting solution of the receiving machine and the aerial.</li> <li>• Make sure that there is no block between the aerial and the transmitter.</li> </ul>
No voice(situation:RF display is normal; AF display is normal)	<ul style="list-style-type: none"> <li>• Check whether the voice re knob of the receiving machine is on the lowest place.</li> <li>• Check whether the connecting between the loudspeakers of the receiving machine are normal.</li> </ul>
No voice(situation:RF display is normal; AF display is un-normal)	<ul style="list-style-type: none"> <li>• Check whether the power of the transmitter is open</li> <li>• Exchange the mike of the transmitter when it is necessary</li> </ul>
Put through the transmitter, there is some noise or some interruption noise in the receiving signal	<ul style="list-style-type: none"> <li>• Check whether the battery is tight enough.</li> <li>• Eliminate the RF source of the disturbance nearby.</li> <li>• Check the connecting situation, if using guitar or other musical instrument.</li> <li>• If both of the transmitters are using the same frequency, check it and close one of them.</li> <li>• maybe the signal is too infirmness, adjust the place of the antenna more it as near the transmitter as possible.</li> <li>• Replace other channel.</li> </ul>
There is some noise, after closing the transmitter.	<ul style="list-style-type: none"> <li>• Adjust the sensitivity button of the transmitter, the "SQ" button.</li> <li>• Eliminate source of noise of RF.</li> <li>• Adjust the place of the receiving machine or the place of the antenna over again.</li> </ul>
While the showplace is moving, the voice from the transmitter may get lost sometimes.	<ul style="list-style-type: none"> <li>• Adjust the sensitivity button of the transmitter; the "SQ" button.</li> <li>• Locate the receiving machine over again and have the "on-show" experiment. Observe the RF display.</li> <li>• If you find some voice lost, tag the point and avoid this point when performing.</li> </ul>
Can not open the transmitter.	<ul style="list-style-type: none"> <li>• Change the battery of the transmitter..</li> </ul>

***AUTOMATIC INDUCTION  
WIRELESS MICROPHONE SYSTEM***

**FCC Warning:**

This equipment has been tested and found to comply with the limits for a Class B digital device, pursuant to part 15 of the FCC Rules. These limits are designed to provide reasonable protection against harmful interference in a residential installation. This equipment generates, uses and can radiate radio frequency energy and, if not installed and used in accordance with the instructions, may cause harmful interference to radio communications. However, there is no guarantee that interference will not occur in a particular installation. If this equipment does cause harmful interference to radio or television reception, which can be determined by turning the equipment off and on, the user is encouraged to try to correct the interference by one or more of the following measures:

- Reorient or relocate the receiving antenna.
- Increase the separation between the equipment and receiver.
- Connect the equipment into an outlet on a circuit different from that to which the receiver is connected.
- Consult the dealer or an experienced radio/TV technician for help.

**Caution:** Any changes or modifications to this device not explicitly approved by manufacturer could void your authority to operate this equipment.

This device complies with part 15 of the FCC Rules. Operation is subject to the following two conditions:

(1) This device may not cause harmful interference, and (2) this device must accept any interference received, including interference that may cause undesired operation.

This equipment complies with FCC radiation exposure limits set forth for an uncontrolled environment. This equipment should be installed and operated with minimum distance 0cm between the radiator and your body.