

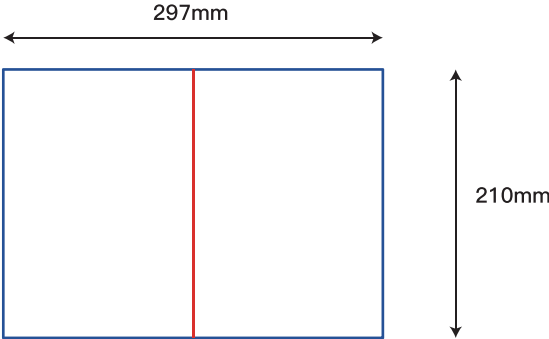
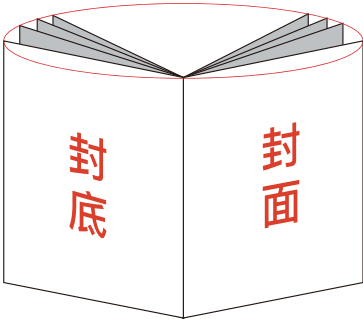



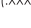



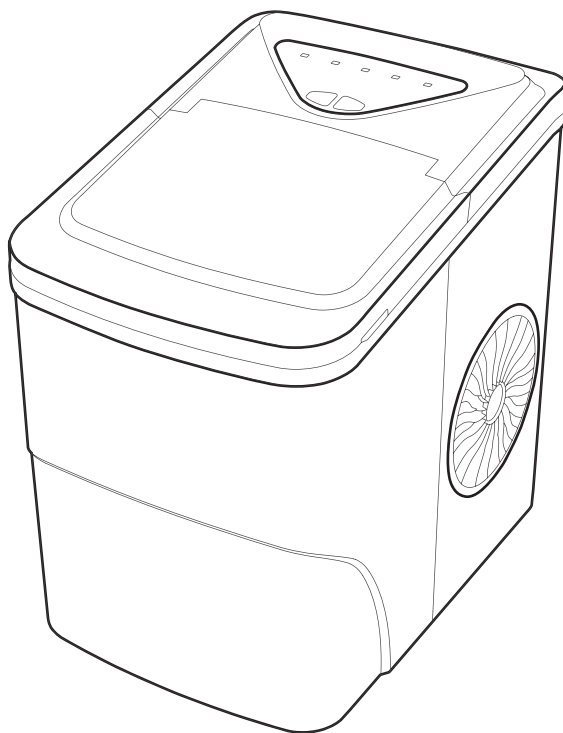
	1	2	3	4						
	注：此页为技术说明，非印刷内容									
A	刀模线：  内折线： 									
B	展开尺寸图： 									
C	装订效果图： 									
D	技术要求： 1、材质：封页 105g 铜板纸；内页 80g 双胶纸 2、展开尺寸：A4，如图所示装订成型为 A5，16P 3、颜色：单色 4、印刷：印刷图档见后续页，双面印刷 5、装订方式：骑马钉									
E										
<div>符号标识</div> <div></div> <div>版本变更</div> <div></div> <div>关键尺寸</div> <div></div> <div>编号</div> <div></div> <div>参考尺寸</div> <div>(.XXX)</div>					名	SLIM22B- 中性包	PLM 号	860-00929-00		
						称	材-manual (单英)-HK	投影法	第一角投影法	
						图				
	除 非 另 有 说 明	标记	处数	ECO#	发行时间		版 本	重量G	比例	
	0-30 ±1	设 计		PM		材	00		1: 1	
	30-150 ±2	绘 图	Sinn	日期	2023/07/12	料	共 1 页		第 1 页	
	150-300 ±3	审 批		日期		规	深圳市倍思奇			
	300-450 ±4	除去所有利边, 尖点, 毛刺				格	创新科技有限公司			
	>450 ±5									
	1	2	3	4						

# INSTRUCTION MANUAL

Rev00(A)

---

**SLIM22B**



## Ice Maker

---

✉ [help\\_service\\_center@outlook.com](mailto:help_service_center@outlook.com)

☎ 877-201-4016

# CONTENTS

IMPORTANT SAFETY INFORMATION .....	01
PRODUCT INTRODUCTION .....	03
CONTROL PANEL INTRODUCTION .....	04
WIFI CONNECTION .....	05
USING YOUR ICE MAKER .....	06
CLEANING AND MAINTENANCE .....	08
PRODUCT SPECIFICATIONS .....	09
TROUBLESHOOTING .....	10
SHORT AND LONG-TERM WARRANTY INFORMATION .....	12
FCC STATEMENT .....	13

# IMPORTANT SAFETY INFORMATION

To reduce the risk of injury or property damage, please follow these safety precautions.

## WARNING



- Voltage power from outlet must match specifications on appliance nameplate.



- This appliance **must be** grounded.



- Using an extension cord may cause overheating and increase the risk of fire.

If an extension cord **MUST** be used:

- 1) **Only use an** extension cord with grounding plug.
  - 2) The marked rating of an extension cord **must be** equal to or greater than the rating of this appliance.
- **Do not** operate if any component, including the cord or plug, is damaged.
  - Unplug the unit before cleaning by hand.



- Only responsible and capable adults should operate the ice maker.
- **Do not** place the power cord where it could be pulled by children or pose a tripping hazard.
- Children should not be left unattended near the ice maker during operation.



- **Do not** use water that is micro-biologically unsafe or of unknown quality.



- **Do not** remove any safety, warning, or product information labels from the unit.



- **Do not** touch the evaporator with your hands while the ice maker is operating.
- **Do not** plug in or unplug the unit with wet hands.



- The unit **must be** placed and set up according to installation instructions before use. The unit is for indoor household use only.



- **Do not** store or use flammable vapors or liquids near the unit.
- **Do not** immerse any part of the unit in water.



- **Do not** attempt to disassemble, repair, modify or replace any part of the ice maker unless permitted by the manufacturer.

## WARNING



### FIRE OR EXPLOSION HAZARD Flammable Refrigerant

This unit contains an isobutane refrigerant, also known as R600a, a natural gas with high environmental compatibility.

However, it is also combustible. Adhere to the warnings below to reduce the risk of injury or property damage.



1. When handling, installing, and operating the unit, care should be taken to avoid damage to the refrigerant tubing.



2. Only dispose of the unit according to Federal and Local Regulations. Contact your local authorities for the environmentally safe disposal of the unit.



3. Keep ventilation openings around the unit's enclosure clear of obstruction.



4. **Do not** place the unit near heat sources such as an oven.

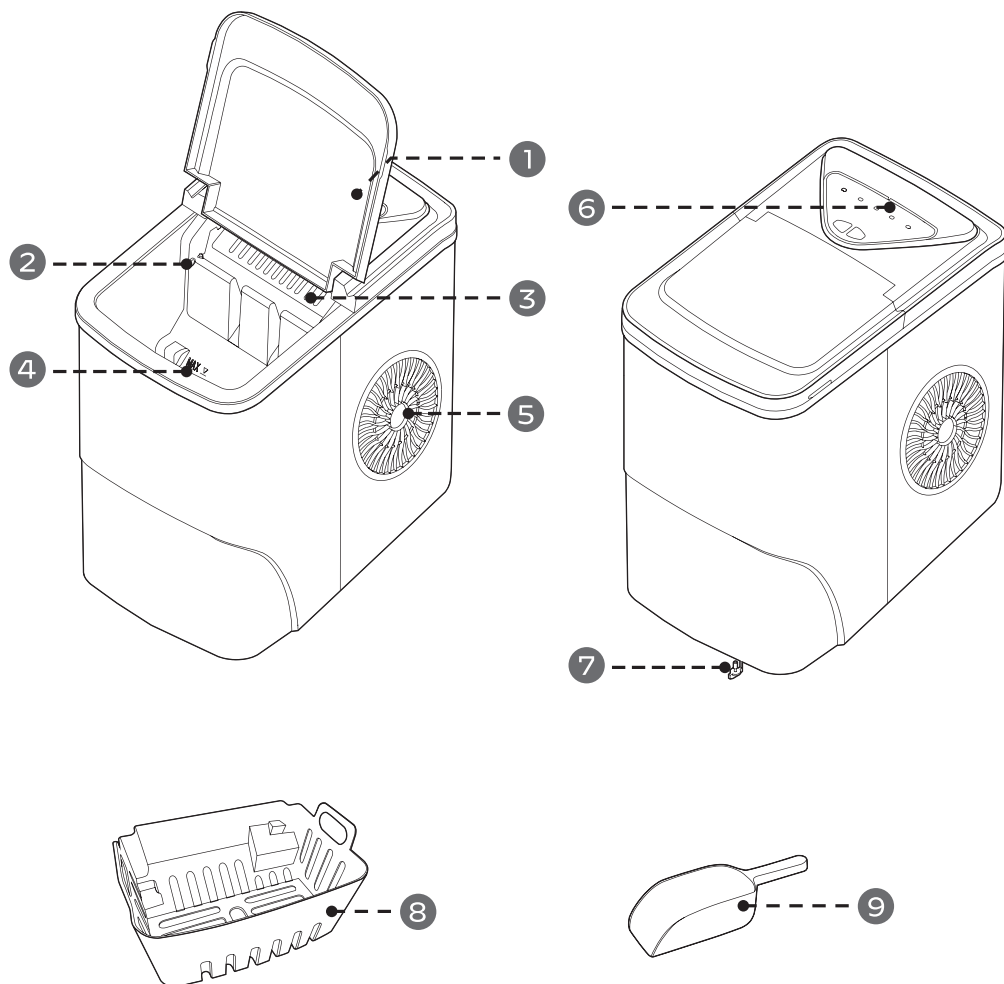


5. Ensure a minimum of three inches of clearance around the side and back walls of the unit for proper air circulation.



6. **Do not** place the unit in direct sunlight.

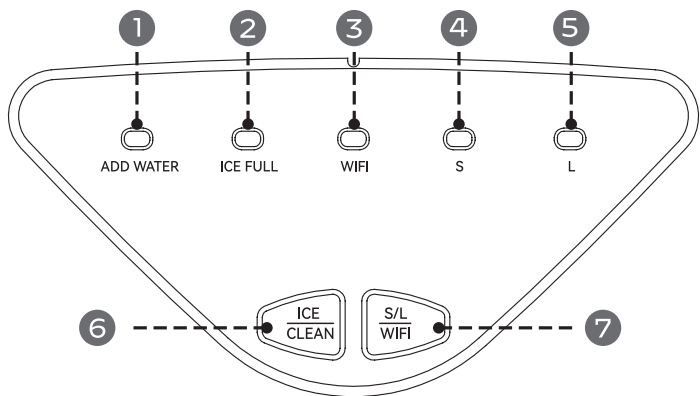
# PRODUCT INTRODUCTION



- 1.** Large Viewing Window
- 2.** Ice Full Sensor
- 3.** Ice Shovel
- 4.** Maximum Water Fill Line
- 5.** Air Exhaust Fan

- 6.** Control Panel
- 7.** Drain Plug
- 8.** Ice Basket
- 9.** Ice Scoop

# CONTROL PANEL INTRODUCTION



	Key (with indicator)	Function
1	ADD WATER	The indicator light turns red when the water reservoir needs water.
2	ICE FULL	The indicator light turns red when the ice basket is full.
3	WIFI	Indicator is on when WiFi is connected.
4	S	The indicator light turns green when small ice mode is selected.
5	L	The indicator light turns green when large ice mode is selected.
6	<div>ICE CLEAN</div>	Short press the "ICE/CLEAN" button to turn on the ice maker. The "S" or "L" indicator light turns green.
		Short press the "ICE/CLEAN" button to turn off the ice maker. The "S" or "L" indicator light goes out.
		When the ice maker is in standby mode, long-press the "ICE/CLEAN" button for 3 seconds and the ice maker will switch to self-cleaning mode. The indicator lights "S" and "L" will flash in green consecutively.
7	<div>S/L WIFI</div>	Confirms large ice mode or small ice mode. Hold 3 seconds for WiFi setup.

# WIFI CONNECTION

**1** To download the app, scan the QR code. You can download iOS or Android version, then install on your mobile device.

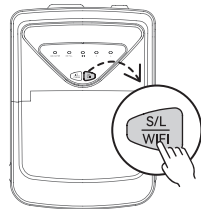
If you have issues downloading the app, please call technical support or email customer service.



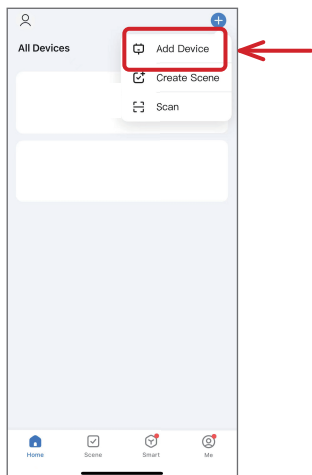
**2** Open the app, turn on bluetooth, then sign up for a free account.

**3** Log in with your account name and password.

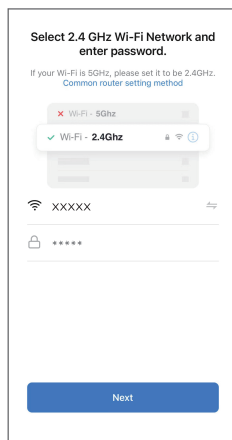
**4** Plug in the ice maker, then hold the “S/L/WIFI” button for 3 seconds. The WiFi indicator light will flash.



**5** Open the app, then select the “add device” button.



**6** Select your WiFi network and enter the password. The network must be 2.4 GHz.



**7** Once the ice maker connects, the WiFi indicator light will stay solid.



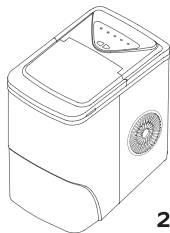
# USING YOUR ICE MAKER

## BEFORE FIRST USE

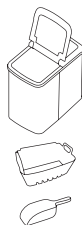
1.

Stand Upright for 24Hrs. Check for Accessories.

Missing Parts?  
Contact Us.



24Hrs



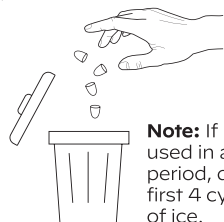
Customer Service

2.

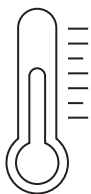
Discard first 4 cycles of ice.

Use in locations  
10°C ~ 32°C.

Perfect Ice Shape.



Note: If not  
used in a long  
period, discard  
first 4 cycles  
of ice.



10°C ~ 32°C



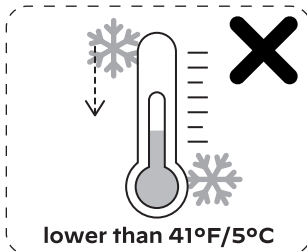
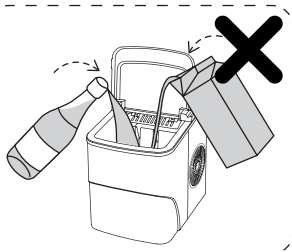
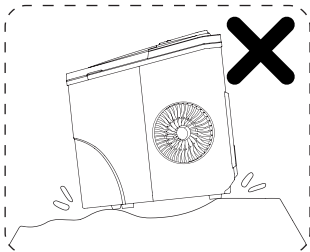
More Cycles = Perfect Shape

## 3. What Not To Do!

Unstable base.

No other liquids  
(Drinking water only).

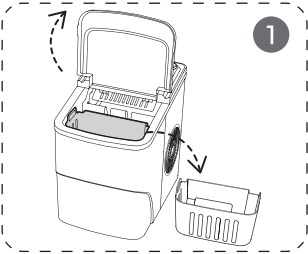
Do not use in  
high or low temps.



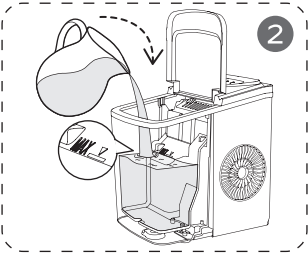
lower than 41°F/5°C

# HOW TO USE YOUR ICE MAKER

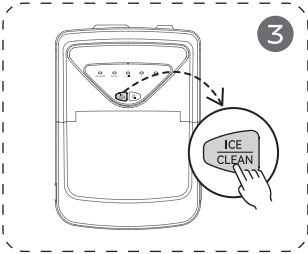
Open cover and remove basket.



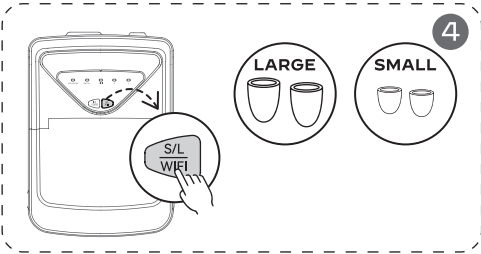
Pour water, do not exceed the "MAX" water mark.



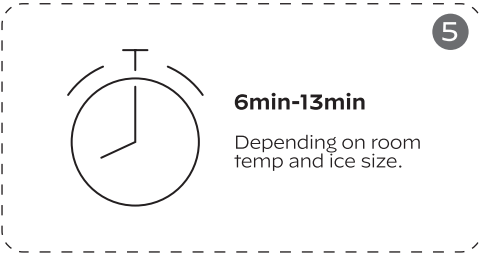
Press the "ICE/CLEAN" button.



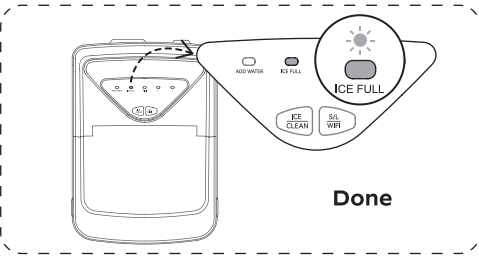
Press "S/L/WIFI" to choose ice cube size.



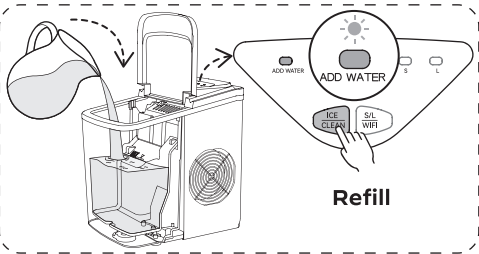
Wait 6min-13min.



Ice full and ready when "ICE FULL" indicator is on.



When "ADD WATER" indicator is red, add water and press "ICE/CLEAN".



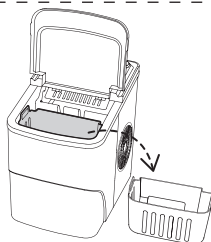
# CLEANING AND MAINTENANCE

To keep your ice tasting fresh and the unit looking great, we recommend cleaning the unit once per week.

## MANUAL CLEANING

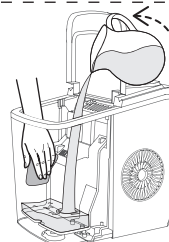
1

Remove the basket.

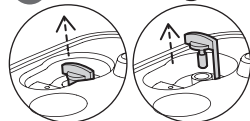


2

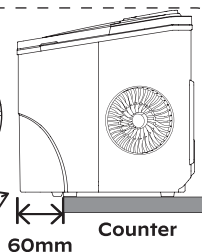
Clean using a soft cloth with warm water and vinegar, then rinse with clean water.



3 Drain Plug



Drain excess water over sink.



4

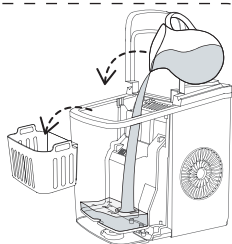
Clean exterior with cloth and mild dish-washing soap.



## SELF-CLEANING (30-MIN PROCESS)

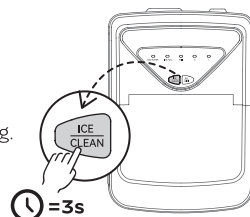
1

Remove the basket and add water.

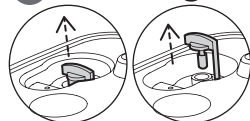


2

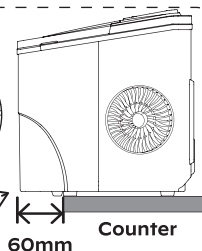
**In Standby Mode**  
Hold for 3 sec to start self-cleaning.



3 Drain Plug

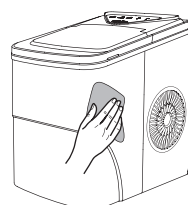


Drain excess water over sink.



4

Clean exterior with cloth and mild dish-washing soap.





**DO's & DON'Ts while cleaning and maintaining**

- **Do not** use organic solvent, boiled water, detergent, strong acid and strong alkali etc. for cleaning.
- When the unit is not to be used for a long duration, **drain** the water completely & dry the interior.
- **Store** in a well-ventilated area.

**PRODUCT SPECIFICATIONS**

Model	SLIM22B
Voltage/Frequency	115V/60Hz
Ice-Making Current	1.7A
Ice-Harvesting Current	2.0A
Working Power	≤160W
Water Reservoir	2L (0.53gal)
Ice-Making Rate	26 lbs per day
Ice Basket Capacity	1.32 lbs (0.6KG)
Ice Shape	Bullet
Ice Size	Small or Large
Material	ABS, PP

## TROUBLESHOOTING

Problem	Possible Causes	Solution
<b>Poor ice shape or quality.</b>	Poor heat dissipation.	Leave a 6-inch clearance on all sides of the ice maker for ventilation.
	The water temperature is too high.	Fill with water temperature between 8°C and 25°C.
	The ambient temperature is too high.	Use the ice maker in room temperatures between 10°C and 32°C.
	Evaporator deformation	Please contact customer service.
<b>Ice maker creating loud noise.</b>	Ice maker has not been cleaned for a long time, which will form a sticky substance around the inlet of the water pump.	Clean every 1 to 2 weeks, using some neutral cleaning agents (such as mild vinegar solution and soapy water etc.)
	Lack of water to pump will create noise when pumping water.	Add more water.
	Fan or ice maker is damaged.	Please contact customer service.
	Water pump is damaged.	

Problem	Possible Causes	Solution
<b>“ICE FULL” light is on.</b>	Ice is blocking the infrared sensor.	Empty the ice basket.
	Infrared sensors do not work.	Wipe clean the infrared sensors, or long-press the “S/L/WIFI” button for 5 seconds to force the ice maker to cycle around 10 times.  Contact customer service if the infrared sensors still don’t work.
<b>Ice sticks together.</b>	Making ice takes too long.	Stop making ice, after the ice melts restart and try again.
	The water temperature is too low.	Fill with water temperatures between 8°C and 25°C.
	Evaporator deformation.	Please contact customer service.
<b>Not making ice.</b>	Ambient or water temperature is too high.	Keep ambient temperature less than 32°C and fill with cold water.
	Water pump is damaged.	Please contact customer service.
	Refrigerating system leaking.	
	Refrigerating system blocked.	
	The fan stopped working.	
	The wires are loose.	
	The gears in the motor are broken.	

Problem	Possible Causes	Solution
<b>“ADD WATER” light is on.</b>	Low water level or not enough water.	Stop making ice, refill water, press “ICE/CLEAN”, then restart and try again.
	Water screen blocked at the bottom of the water reservoir.	Run the self-cleaning cycle.
	Pump malfunction.	Please contact customer service.
	Water detector malfunction.	

## SHORT AND LONG-TERM WARRANTY INFORMATION

### 30-DAY LIMITED WARRANTY

To provide customers with a quality shopping and user experience, the unit can be replaced or returned for a full refund within the 30-day period from the date of purchase.

### 30-DAY TO 1-YEAR LIMITED WARRANTY

After the 30-day warranty has expired, a 1-year warranty from the date of purchase that covers product replacement is automatically activated. Please note that proof of purchase is required for all warranty claims.

### 30-DAY TO 1-YEAR WARRANTY LIMITATIONS

This warranty does not cover:

- Any condition resulting from incorrect or inadequate maintenance or care.
- Damage resulting from misuse, abuse, negligence, accidents, or shipping damage.
- Dissatisfaction due to buyer's remorse.
- Normal wear and tear.
- Damages incurred after initial transportation.

This device complies with Part 15 of the FCC Rules. Operation is subject to the following two conditions:

- (1) this device may not cause harmful interference, and
- (2) this device must accept any interference received, including interference that may cause undesired operation.

NOTE: This equipment has been tested and found to comply with the limits for a Class B digital device, pursuant to part 15 of the FCC Rules. These limits are designed to provide reasonable protection against harmful interference in a residential installation. This equipment generates uses and can radiate radio frequency energy and, if not installed and used in accordance with the instructions, may cause harmful interference to radio communications. However, there is no guarantee that interference will not occur in a particular installation. If this equipment does cause harmful interference to radio or television reception, which can be determined by turning the equipment off and on, the user is encouraged to try to correct the interference by one or more of the following measures:

- Reorient or relocate the receiving antenna.
- Increase the separation between the equipment and receiver.
- Connect the equipment into an outlet on a circuit different from that to which the receiver is connected.
- Consult the dealer or an experienced radio/TV technician for help.

In order to comply with FCC RF Exposure requirements, this device must be installed to provide at least 20 cm separation from the human body at all times.



Changes or modifications not expressly approved by the party responsible for compliance could void the user's authority to operate the equipment

**NOTE:**

THE MANUFACTURER IS NOT RESPONSIBLE FOR ANY RADIO OR TV INTERFERENCE CAUSED BY UNAUTHORIZED MODIFICATIONS TO THIS EQUIPMENT. SUCH MODIFICATIONS COULD VOID THE USER'S AUTHORITY TO OPERATE THE EQUIPMENT.

# **Thank You**

## **For Choosing Us!**

All of us do appreciate your ice maker purchase. We hope that you are as happy with the ice maker as we were designing and manufacturing it for you. We strive to provide you with the best quality ice makers and services in the industry.

### **Questions or Problems?**



877-201-4016



help\_service\_center@outlook.com