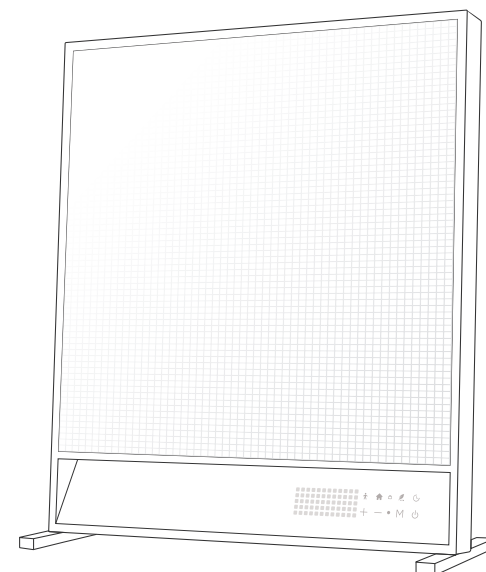


SUNKOS

SUNKOS

Sunshine Electric Heater
operating manual

SK-E1





Thank you for choosing
to buy a SUNKOS sunshine heater

CONTACT

If you have any questions, feel free to contact us. We are committed to your satisfaction and are confident in our ability to address any concerns or questions you may have.

✉ support@sunkos.tech

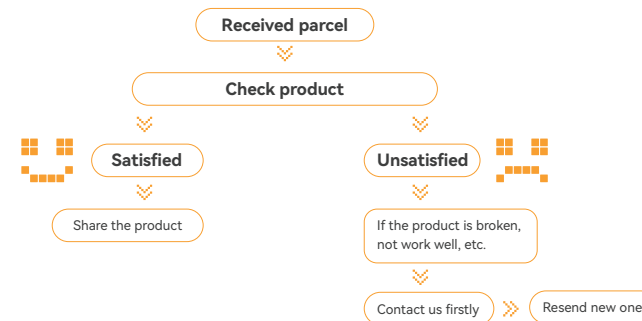
🌐 www.sunkos.tech

📘 [@sunkos](#)



SPECIAL CARE AND SUPPORT

SUNKOS is a family business and we respect and value each of our customers, especially children and the elderly. Attention: If you are elderly or there are children in your home, please feel free to email us at **vip@sunkos.tech**, when you have any query or questions in using our products. We will give you a prompt reply within two business hours.



» DESCRIPTION

The sunshine heater features 2 heating modes (Focused / Space) and comes with a remote control and mobile app control for convenience. This unit also features an adjustable built-in timer (1-12 hours) or 12-hour automatic shutdown without adjustable, it also comes with a 6ft. (1.82m) grounded cord.

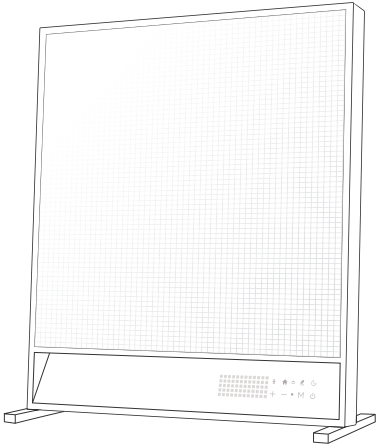
» SPECIFICATIONS

Motor 120V / 60Hz(US), 230V / 50Hz
Control Manual / Remote Control / Mobile app / Alexa
Settings Focused (P1/P2/P3) Space (±1°F/°C)

Mode	Focused Heat mode		
Settings	P1	P2	P3
Watts	750w	1050w	1500w
dB A	≈0	≈0	≈0
Mode	Space Heat mode		
Settings	60-90°F / 20-32°C		
Watts	Eco heating from 0-1500w		
dB A	≈0		

» OPERATION

- Step1:** Place the heater on a firm and level surface.
- Step2:** Plug the cord set into a 120V electrical outlet. Be sure plug fits tightly in outlet.
- Step3:** When the heater is initially plugged in, there will be a ‘beep’ and the power light will come on indicating that there is power to the unit. The power light will remain lit until the heater is unplugged from the electrical outlet.
- Step4:** Turn the heater on by pressing the power button on the remote control or on the screen of the heater.
- Step5:** When initially turned on, the heater will be in P3 of Focused Heat Mode (1500 Watts) on Max.
- Step6:** Press the +/- button and the heater will be in other heating levels, indicated by the display of P2 and P1.
- Step7:** Press M button to switch between heating modes. (Focused Heat Mode and Space Heat Mode.)
- Step8:** In Space Heat Mode, you can fine-tune the temperature preset with an accuracy of ±1°F.
- Step9:** For more information about the remote control operations, please refer to pages 9, 14, and 15.
- Step10:** For more information about the App operations, please refer to pages 10-12.



» DOWNLOAD THE SMART LIFE APP



Download the Smart Life app from the App Store or Google Play. Open the app and create a new account with email.

» TAKE FULL CONTROL WITH THE SMART LIFE APP

For further instructions on connecting operations, please refer to page 10-11 of the manual.



» AFTER COMPLETING THE CONNECTION, PLEASE TRY!



Alexa, turn on SUNKOS heater.

Alexa, set SUNKOS Heater to Focused heat.

Alexa, what is the temperature of SUNKOS heater?

» WARRANTY EXTENSION

Register your SUNKOS account to extend your warranty, after registering your extra 12 months guarantee, your SUNKOS appliance will be covered for parts and labour for totally 24 months from the date of purchase, subject to the terms of the SUNKOS guarantee.

3 easy ways to register your extra 12 months guarantee



**Register with
Smart Life app**

Connect the device:
SUNKOS heater SK-E1.
Enter the device's control panel.
Click ☰ -Warranty Extension.
A registration page for warranty extension will then pop up.



**Register
online**

Visit SUNKOS official website to extend your warranty, get your Sunkos full parts and labour guarantee online.
Website Link:
www.sunkos.tech/pages/warranty



**Register
by E-mail**

Send Email with 'Warranty extension' to support@sunkos.tech.

» IMPORTANT INTRODUCTIONS

WARNING

READ AND SAVE THESE INSTRUCTIONS.

READ CAREFULLY BEFORE ATTEMPTING TO ASSEMBLE, INSTALL, OPERATE OR MAINTAIN THE PRODUCT DESCRIBED. PROTECT YOURSELF AND OTHERS BY OBSERVING ALL SAFETY INFORMATION. FAILURE TO COMPLY WITH INSTRUCTIONS COULD RESULT IN PERSONAL INJURY AND/OR PROPERTY DAMAGE! RETAIN INSTRUCTIONS FOR FUTURE REFERENCE.

1. Read all instructions before using the heater.
2. Use this heater only as described in this manual. Any other use not recommended by the manufacturer may cause fire, electrical shock, or injury to persons.
3. Make certain that the power source conforms to the electrical requirements of the heater.
4. Extreme caution is necessary when heater is used by or near children or invalids and whenever the heater is left operating unattended.
5. The power cord is equipped with a three-prong grounded plug that must be inserted into a matching receptacle. Under no circumstances should the ground prong be cut off the plug. Where a two-prong wall receptacle is encountered, it must be replaced with a properly grounded three-prong receptacle installed in accordance with the National Electrical Code (NEC) and all applicable local codes and ordinances. This work must be done by a qualified electrician, using copper wires only.

DO NOT USE A THREE-PRONG ADAPTER. IMPROPER CONNECTION MAY CAUSE THIS RISK OF ELECTROCUTION.

6. Where possible, avoid the use of extension cords because the extension cord may overheat and cause a risk of fire. Never use a single extension cord to operate more than one heater.
7. Do not operate heater with a damaged cord or plug or after the heater malfunctions, has been dropped or damaged in any manner. Return heater to authorized service facility for examination, electrical or mechanical adjustment or repair.
8. Unplug power cord before servicing or moving the heater. Always unplug heater when not in use.
9. Do not insert or allow fingers or foreign objects to enter any ventilation or exhaust opening as it may cause an electric shock or fire, or damage the heater. Do not block or tamper with the heater in any manner while it is in operation.
10. To prevent a possible fire, do not block air intakes or exhaust in any manner. Do not place on soft surfaces, like bed, where openings may become blocked.
11. Always place the heater on a stable, flat, level surface when operating, to avoid the chance of the heater overheating. Locate the power cord so the heater or other objects are not resting on it. Do not run power cord under carpeting. Do not cover power cord with throw rugs, runners, or the like. Arrange power cord away from room traffic and where it will not be tripped over.

12. This heater is hot when in use. To avoid burns, do not let bare skin touch hot surfaces. Always use the handle when moving this heater. Keep combustible materials, such as furniture, pillows, bedding, papers, clothes and curtains at least 3 feet (0.9m) from the front of the heater and keep them at least 1 foot (0.3m) from the sides and rear.

13. A heater has hot and arcing or sparking parts inside. It must NOT be used in potentially dangerous locations such as flammable, explosive, chemical-laden or wet atmospheres. This heater is intended for general use ONLY.

14. This heater is not intended for use in wet or damp locations. Never locate a heater where it may fall into a bathtub or other water container.

15. Do not use heater outdoors.

16. Pacemakers and defibrillators may be affected by strong magnetic fields. If you or someone in your household has a pacemaker or defibrillator, avoid placing the remote control in a pocket or near to the device.

17. Credit cards and electronic storage media may also be affected by magnets and should be kept away from the remote control.

18. Some parts of this appliance can become very hot and cause burns. Particular attention has to be given where children and vulnerable people are present.

19. This appliance is not intended for use by persons (including children) with reduced physical, sensory or mental capabilities, or lack of experience and knowledge, unless they have been given supervision or instruction concerning use of the appliance by a person responsible for their safety. Children should be supervised to ensure that they do not play with the appliance.

20. This appliance must not be located immediately below a socket outlet.

21. Do not use or store this appliance in the immediate surroundings of a bath, shower or swimming pool.

22. To avoid overheating, do not cover the appliance.

23. If the supply cord is damaged, it must be replaced or repaired by the manufacturer, its service agent or similarly qualified persons in order to avoid a hazard.

24. Do not use this appliance in small rooms when they are occupied by persons not capable of leaving the room on their own, unless constant supervision is provided.

25. Do not use outdoors or on wet surfaces and do not handle any part of the appliance or plug with wet hands.

26. Always plug directly into a wall socket. Never use with an extension cable as overloading may result in the cable overheating and catching fire.

27. Do not use this appliance if it has been damaged or submerged in water.

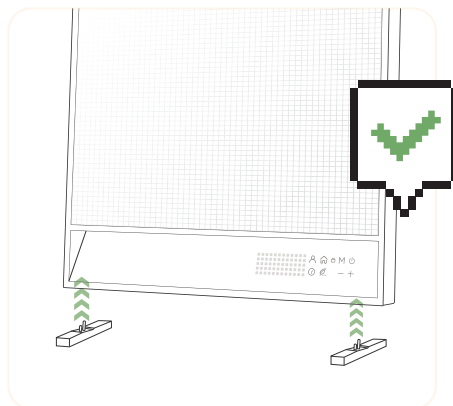
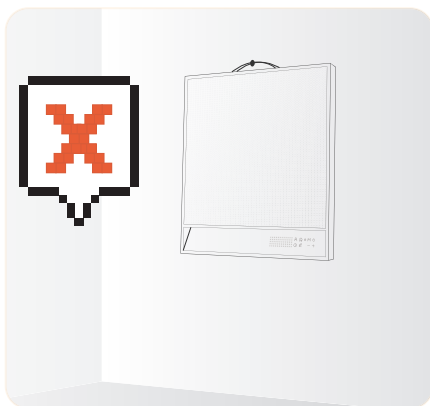
28. Keep this appliance and cable away from heated surfaces. Do not position the cable under furniture or appliances.

29. Do not put any objects into any opening as this may cause an electric shock or fire, or may damage the appliance.

30. If there is a loose fit between the plug and the socket or the plug becomes very hot, the socket may need to be replaced. Check with a qualified electrician to replace the socket.

WARNING

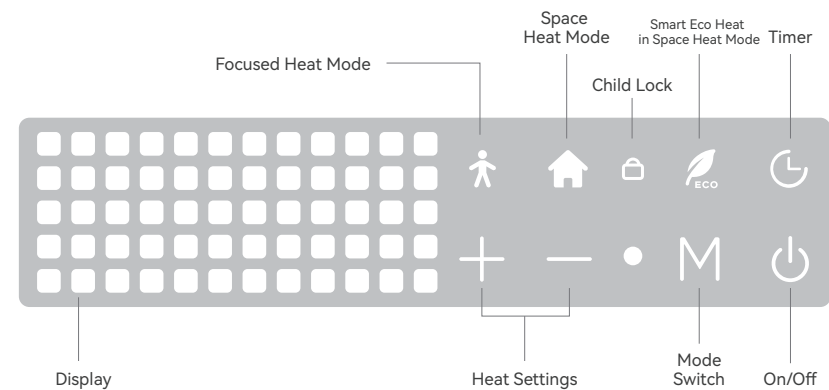
DO NOT HANG ME ON WALL WHEN I'M HEATING!
IT'S DANGEROUS!

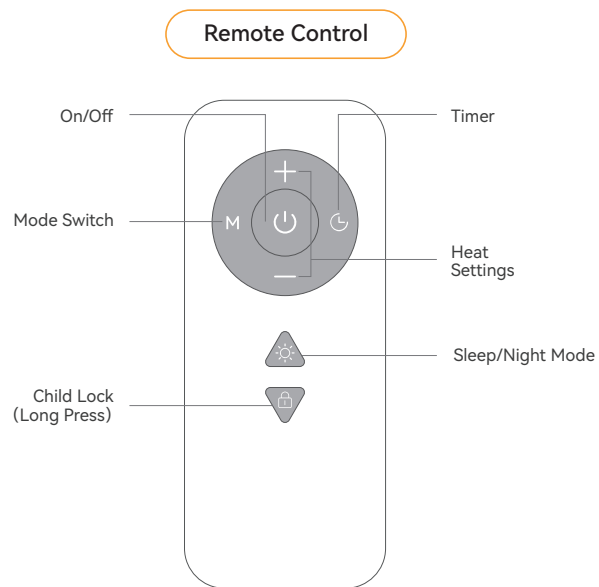


MUST ENSURE PROPER INSTALLATION OF THE
TWO LEGS OF SUNKOS HEATER BEFORE HEATING.

» CONTROLS

Display





※ °C/°F: Long press **M** &  button at the same time.

» CONNECTING TO THE SMART LIFE APP

① Download the app



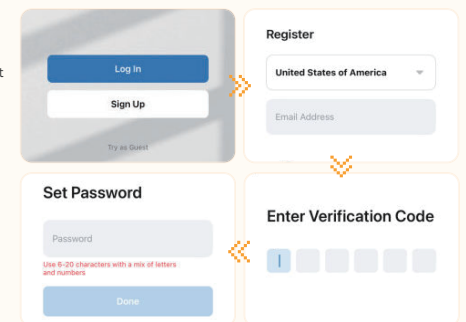
Search for Smart Life in Apple's App Store, Google Play Store, and other major app stores or scan the QR code above to download the Smart Life app.

② Log in / Sign up

Log in with your Smart Life account or **Sign Up** if you don't have one. please read the user agreement and privacy policy thoroughly before agreeing to.

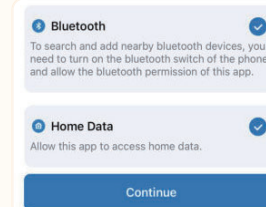
Enter your email address and tap **Get Verification Code** to proceed.

Enter the returned verification code to navigate to the password setting page. Set a password as required and tap Done.




③ Turn on bluetooth

The privacy security of your personal information is guaranteed when the following permissions are granted.



④ Device pairing

Long press the **M button** on the screen of the remote control (or on the screen of the heater) until the  icon flashes, the device will enter pairing mode.

