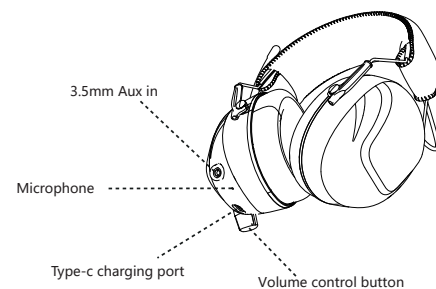
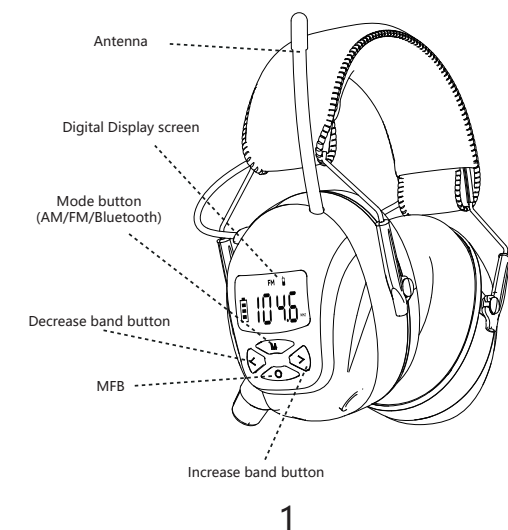
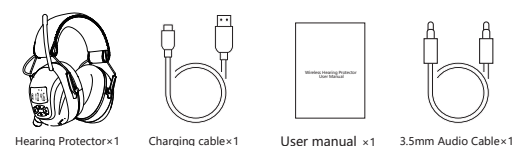


单页： 80*110mm

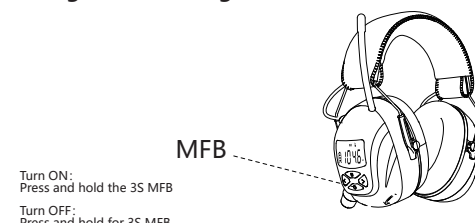
Wireless Hearing Protector User Manual



What's Included



Using Your Hearing Protector



Turn ON:
Press and hold the 3S MFB

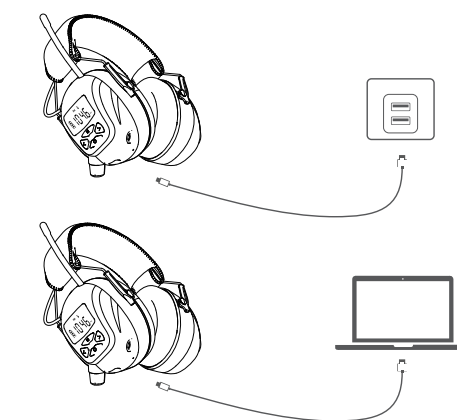
Turn OFF:
Press and hold for 3S MFB

 Auto switch-off after 5 minutes without connecting to the device in wireless mode

Charging the hearing protector

To charge the hearing protector, insert the supplied USB connector cable into the USB jack located on the hearing protector. Connect the other end of the cable to a suitable USB power source such as a computer or third party certified (UL, Intertek, etc.) AC to USB wall adapter. (5V 1A)
Digital Display Screen light up, and Off when charger full.

Digital Display Screen light up, and Off when charger full.



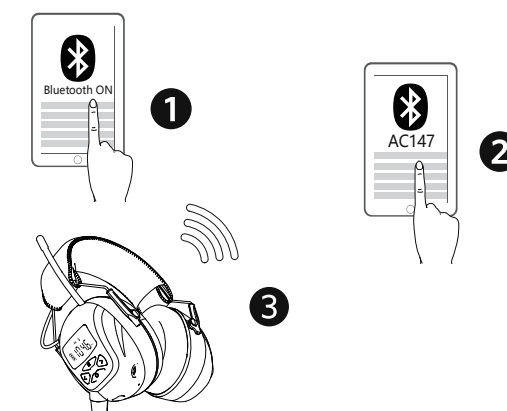
Pair with your device

*Press and hold the power button 3s, digital display screen" "ashlight fast

*Open the Bluetooth on your device and select **"AC147"** start to pairing.

*When turned on, the hearing protector will automatically connect to the last connected device if available. If not, it will enter pairing mode

*Having connection problems? Remove "AC147" from your device's Bluetooth history, ensure it's less than 3 feet away then try pairing again



3mm出血

Controls

buttons	operation	Action
MFB	play/pause music	single press
>	Next song	Long Press 1 second
<	Previous song	Long Press 1 second
Volume control button+		clockwise
Volume control button-		anticlockwise

Call

buttons	operation	Action
MFB	answer call	single press
MFB	end call	single press
MFB	reject call	Long Press 1 second

Voice assistant

MFB	Long press 1s in connection status
MFB	Press and hold again for 1s to close



WARNING: DO NOT DISPOSE OF THE UNIT IN FIRE OR WATER – NEVER ATTEMPT TO DISASSEMBLE AND REASSEMBLE. WASTE ELECTRICAL PRODUCTS SHOULD BE SEPARATED FROM WASTE. ELECTRICAL PRODUCTS SHOULD NOT BE DISPOSED OF WITH HOUSEHOLD WASTE. RECYCLE WHERE FACILITIES EXIST.
→ CHECK WITH YOUR LOCAL AUTHORITIES FOR RECYCLING ADVICE. KEEP YOUR DEVICE AND ALL ACCESSORIES OUT OF THE REACH OF CHILDREN AND ANIMALS.
→ SMALL PARTS CAN CAUSE SUFFOCATION OR INJURY. SMALL PARTS CAN BELOOM OR SERIOUSLY INJURE IF SMALLER – ALWAYS EXPRESS THE DEVICE TO VENTHART OR CAUSE COOL TEMPERATURES (BELOW 41 °C OR ABOVE 141 °C) BEHIND 90 °C OR ABOVE 423 °C – EXTREME TEMPERATURES CAUSE DEFORMATION OF THE DEVICE AND REDUCE THE CHARGING CAPACITY AND LIFETIME OF THE DEVICE. AND REDUCE THE CHARGING CAPACITY AND LIFE SPAN OF THE DEVICE. – DO NOT ALLOW YOUR DEVICE WITH HOT LIQUIDS CAN CAUSE SERIOUS DAMAGE.
DO NOT SHAMPOO YOUR DEVICE WITH HOT WATER.

Wireless mode voice prompt

Work Status	voice Prompt
Power on	Power on
Power off	Power off
Pairing mode	Pairing
Bluetooth connected	Connected
Low battery warning	Please charger
Disconnected	Disconnected
Battery high	Battery high (70%-100%)
Battery medium	Battery medium(30%-70%)
Battery low	Battery low(0%-30%)

AM/FM Mode (When the Radio Hearing Protector is power on)

Controls

Button	Operation	Action
Mode	FM/AM	Single press
	Automatically search for channels	Press and hold 1s

Increase band button	Increase frequency band by 10 Hz	Single press
	Automatically search for channels downwards	Press and hold 1S
Decrease band button	Decrease frequency band by 10 Hz	Single press
	Automatically search for channels upwards	Press and hold 1S
MFB	Change listing it (P1-19)	Single press
	Delete storage platform	Double press

Specifications

Version	5.4
Input	5V \mp 1A
Charging time	4 hours
Working range	20 meters
Working time	120 hours
Charging Port	Type-C
Battery capacity	2000mAh

Correct Disposal of This Product
(Waste Electrical & Electronic Equipment)

This Marking shown on the product or its literature, indicate that it should not be disposed with other household wastes at the end of its working life. To prevent possible harm to the environment or human health from unsorted waste disposal, please separate this from other types of wastes and recycle it responsibly to promote the sustainable reuse of material resources.

Household user should contact either the retailer where they purchased this product, or their local government office, for details of where and how they can take this item for environmentally safe recycling. Business users should contact their supplier and check the applicable conditions of sale for this product. This product should not be mixed with other commercial wastes for disposal.

FCC STATEMENT:
This device complies with Part 15 of the FCC Rules. Operation is subject to the following two conditions.
(1) This device may not cause harmful interference, and
(2) This device must accept any interference received, including interference that may cause undesired operation.

WARNING: Changes or modifications not expressly approved by the party responsible for compliance could void the user's authority to operate the equipment.

NOTE: This equipment has been tested and found to comply with the limits for a Class B digital device, pursuant to Part 15 of the FCC Rules. These limits are designed to provide reasonable protection against harmful interference in a residential installation. This equipment generates uses and can radiate radio frequency energy and, if not installed and used in accordance with the instructions, may cause harmful interference to radio communications. However, there is no guarantee that interference will not occur in a particular installation. If this equipment does cause harmful interference to radio or television reception, which can be determined by turning the equipment off and on, the user is encouraged to try to correct the interference by one or more of the following measures:

of the following measures:

- Reorient or relocate the receiving antenna.
- Increase the separation between the equipment and receiver.
- Connect the equipment into an outlet on a circuit different from that to which the receiver is connected.
- Consult the dealer or an experienced radio/TV technician for help.

RF warning statement:

The device has been evaluated to meet general RF exposure requirement. The device can be used in portable exposure condition without restriction.

RF warning statement:
The device has been evaluated to meet general RF exposure requirement. The device can be used in portable exposure condition without restriction.