

正面

80mm

80mm

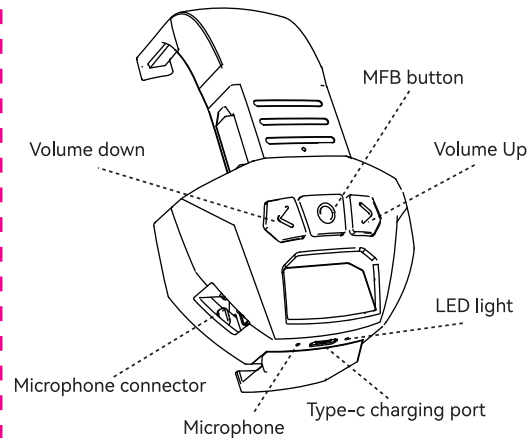
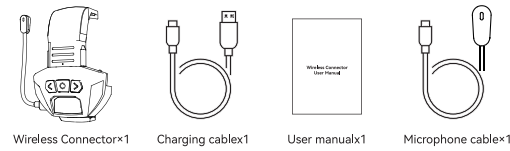
80mm

80mm

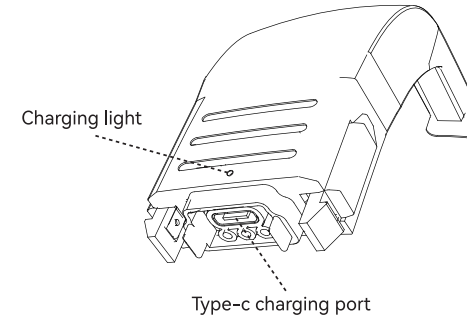
Wireless Connector User Manual



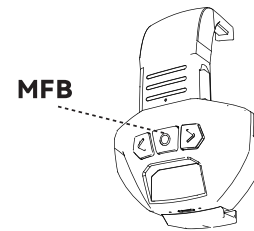
What's Included



1



Using Your Wireless Connector



Turn ON:
Press and hold the 2S MFB
Turn OFF:
Press and hold for 3S MFB

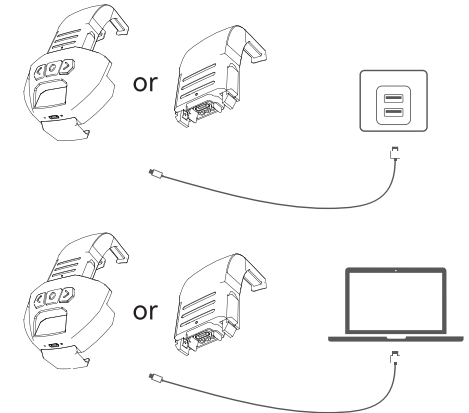
Auto switch-off after 5 minutes without connecting to the device

2

Charging the Wireless Connector

To charge the hearing protector, insert the supplied USB connector cable into the USB jack located on the wireless connector. Connect the other end of the cable to a suitable USB power source such as a computer or third party certified (UL, Intertek, etc.) AC to USB wall adapter. (5V 1A)

Flashing red	Low power
Steady red	Charging
OFF	Fully charged



3

背面

110mm

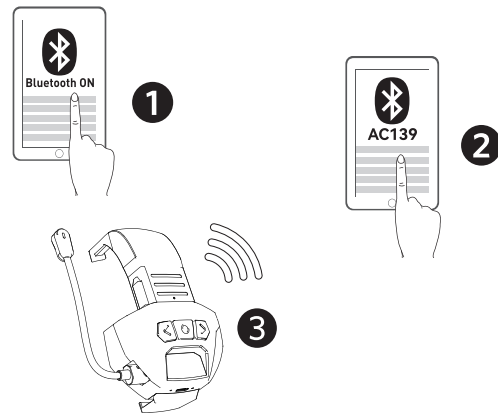
Pair with your device

*Press and hold the power button 3s, Indicator will flashlight red and blue fast

*Open the Bluetooth on your device and select "AC139" start to pairing.

*When turned on, the wireless connector will automatically connect to the last connected device if available. If not, it will enter pairing mode

*Having connection problems? Remove "AC139" from your device's Bluetooth history, ensure it's less than 3 feet away then try pairing again



4

Controls

buttons	operation	Action
MFB	play/pause music	single press
+	volume +	single press
-	volume -	single press
+	Next song	Long Press 1 second
-	Previous song	Long Press 1 second

Call

buttons	operation	Action
MFB	answer call	single press
MFB	end call	single press
MFB	reject call	Long Press 1 second

Voice assistant

buttons	operation	Action
MFB	activate voice assistant	twice press
MFB	stop voice assistant	singlepress

5

LED Indicator Status & Voice Prompt

Work Status	Indicator Light Status	Voice Prompt
Power on	Red and blue light is flashes 1 second	Power on
Power off	Light off	Power off
Pairing mode	Blue and red light is flashes quickly	Pairing
Bluetooth connected	Blue light is flashes per 10 seconds	Connected
Low battery warning	Red light is flashes per 10 seconds	Please charger
Disconnected	Blue and red light is flashes quickly	Disconnected
Battery high		Battery high (70%-100%)
Battery medium		Battery medium(30%-70%)
Battery low		Battery low(0%-30%)

Specifications

Version	5.4
Input	5V =1A
Charging time	2 hours
Working range	20 meters
Working time	45 hours
Charging Port	Type-C
Battery capacity	500 mAh

6

Correct Disposal of This Product
(Waste Electrical & Electronic Equipment)
This Marking shown on the product or its literature, indicate that it should not be disposed with other household wastes at the end of its working life. To prevent possible harm to the environment or human health from uncontrolled waste disposal, please separate this from other types of wastes and recycle it responsibly to promote the sustainable reuse of material resources.
Household user should contact either the retailer where they purchased this product, or their local government office, for details of where and how they can make this item for environmentally safe recycling. Business users should contact their supplier and check the terms and conditions of the purchase contract. This product should not be mixed with other commercial wastes for disposal.

FCC STATEMENT :
This device complies with Part 15 of the FCC Rules. Operation is subject to the following two conditions:
(1) This device may not cause harmful interference, and
(2) This device must accept any interference received, including interference that may cause undesired operation.
Warning: Changes or modifications not expressly approved by the party responsible for compliance could void the user's authority to operate the equipment.
NOTE: This equipment has been tested and found to comply with the limits for a Class B digital device, pursuant to Part 15 of the FCC Rules. These limits are designed to provide reasonable protection against harmful interference in a residential installation. This equipment generates uses and can radiate radio frequency energy and, if not installed and used in accordance with the instructions, may cause harmful interference to radio communications. However, there is no guarantee that interference will not occur in a particular installation. If this equipment does cause harmful interference to radio or television reception, which can be determined by turning the equipment off and on, the user is encouraged to try to correct the interference by one or more of the following measures:
- Reorient or relocate the receiving antenna.
- Increase the separation between the equipment and receiver.
- Connect the equipment into an outlet on a circuit different from that to which the receiver is connected.
- Consult the dealer or an experienced radio/TV technician for help.

RF warning statement:
The device has been evaluated to meet general RF exposure requirements. The device can be used in portable exposure condition without restriction.



WARNING: DO NOT DISPOSE OF THE UNIT IN FIRE OR WATER. - NEVER ATTEMPT TO DISASSEMBLE AND REASSEMBLE. WASTE ELECTRICAL PRODUCTS SHOULD NOT BE DISPOSED OF WITH HOUSEHOLD WASTE. ELECTRICAL PRODUCTS SHOULD NOT BE DISPOSED OF WITH HOUSEHOLD WASTE. RECYCLE WHERE FACILITIES EXIST. -> CHECK CHECK WITH YOUR LOCAL AUTHORITIES FOR RECYCLING ADVICE. KEEP YOUR DEVICE AND ALL ACCESSORIES OUT OF THE REACH OF CHILDREN AND ANIMALS. -> SMALL PARTS CAN CAUSE SUFFOCATION OR INJURY. SMALL PARTS CAN CAUSE CHOKING OR SERIOUS INJURY IF SWALLOWED. -> AVOID EXPOSING YOUR DEVICE TO VERY HOT OR VERY COLD TEMPERATURES (BELOW 0°C OR ABOVE 40°C). (BELOW 0°C OR ABOVE 40°C). -> EXTREME TEMPERATURES MAY CAUSE DEFORMATION OF THE DEVICE AND REDUCE THE CHARGING CAPACITY AND LIFE SPAN OF YOUR DEVICE. -> DO NOT ALLOW YOUR DEVICE TO GET WET. LIQUIDS CAN CAUSE SERIOUS DAMAGE. -> DO NOT HANDLE YOUR DEVICE WITH WET HANDS.

7