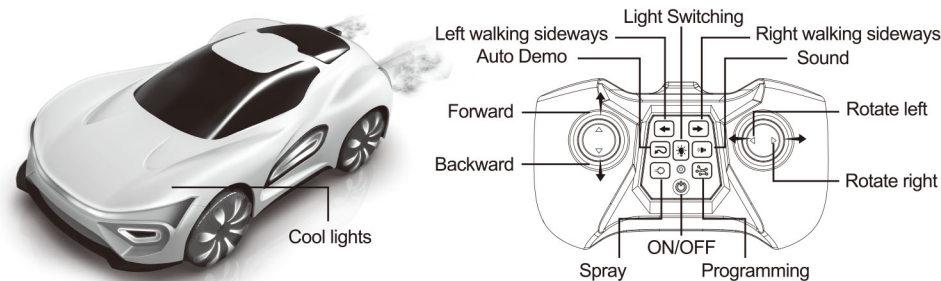


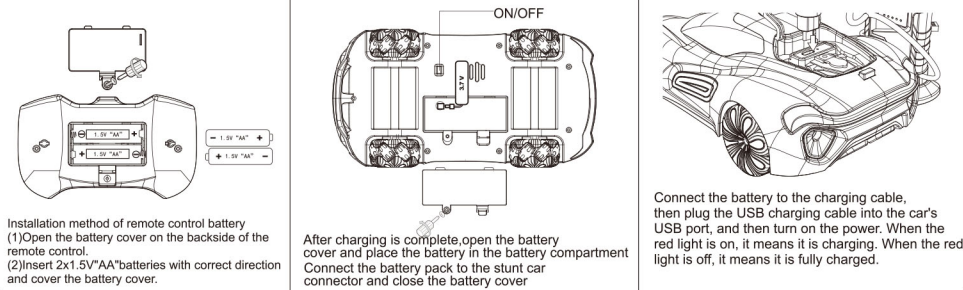
# INSTRUCTION

## 2.4GHZ R/C 4WD ROTATE TRANSFORM STUNT OFF ROAD CRAWLER WITH

### Description of remote control vehicle and remote control components



### Installation and charging method for the batteries of stunt car and remote control



### Precautions for battery use

- 1.The remote control car uses 3.7V rechargeable lithium batteries, and the remote control uses two 1.5V "AA" non rechargeable batteries.
2. Non rechargeable batteries cannot be recharged;
- 3.The rechargeable battery can only be charged under adult supervision;
- 4.The rechargeable battery should be taken out of the toy before charging;
- 5.How to take out and put in the battery: loosen the screw with a screwdriver, uncover the battery cover, and press the correct key Polarity put in and take out the battery;
- 6.Take out and put in the battery according to the identification on the toy battery room;
- 7.Only use the same or the same battery as the recommended battery;
8. Do not mix new and old batteries or different types of batteries;
- 9.The battery should be placed in the correct polarity;
- 10.The exhausted battery should be taken out of the toy;
- 11.The power terminal should not be short circuited.

### YOU CAN'T SOAK YOUR CAR IN WATER!



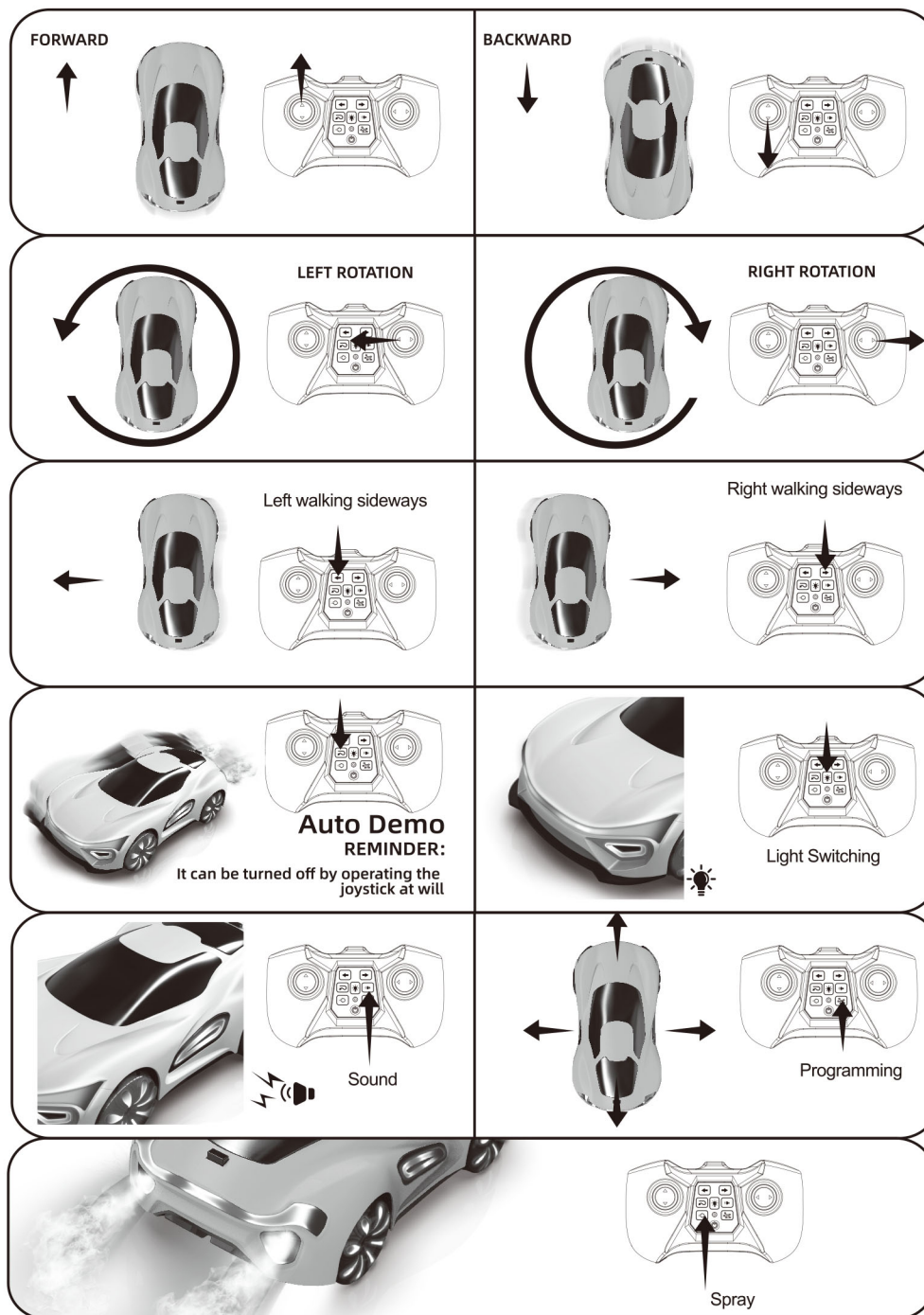
### FUNCTION DEMONSTRATION DESCRIPTION

**POWER ON:** Turn on the remote control car switch, and the headlights will flash rapidly all the time. You should turn on the remote control to check the frequency. After the remote control vehicle completes frequency alignment, the headlights stop flashing rapidly. When the frequency matching is completed, the remote The red indicator light of the controller becomes normally on. Can push the panel. The corresponding function remote lever controls the action of the remote control vehicle.

**REMOTE CONTROL DISTANCE:** The remote control distance is about 30 meters

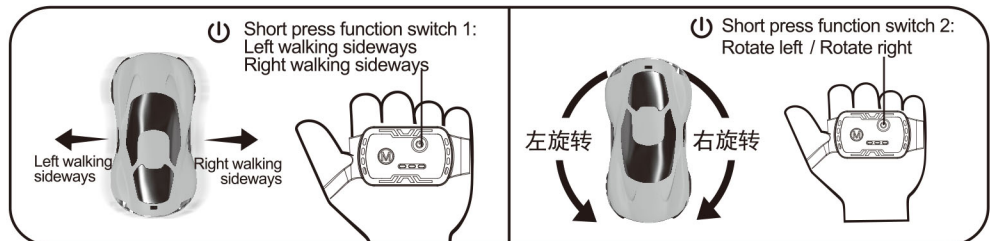
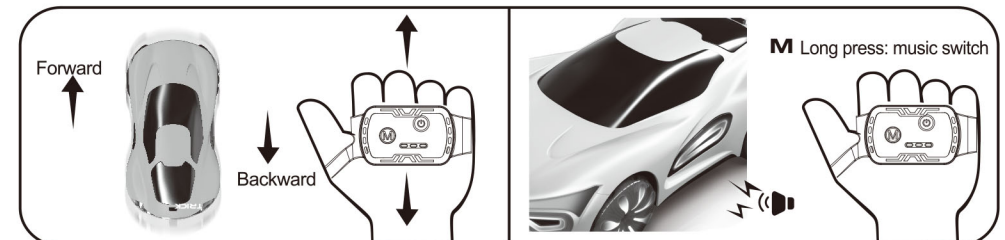
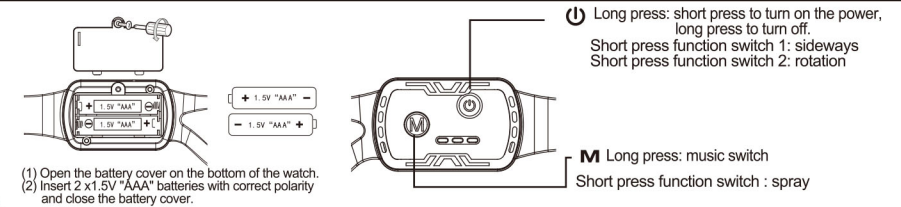
**USAGE TIME:** It can take about 25 minutes when it is fully charged

## REMOTE CONTROL VERSION



## GESTURE SENSOR WATCH CONTROL

### Induction watch function description



## WARNING

When the remote control can not control the remote control car, Turn off the power of the remote control first, and then turn it off Remote control the vehicle power, and then turn on the power, Then pull the remote control lever again Frequency alignment.

### MATTERS NEEDING ATTENTION

- 1.The small detachable parts should be placed well, never let the child swallow.
- 2.If there is radio interference in the operation site, please choose another site Ground operation.
- 3.When the power supply of the remote control is low, please stop the operation immediately.
- 4.Please do not discard the removed packages anywhere, so as not to pollute environmental sanitation.
- 5.Please store your remote control model in a dry and cool place Where.
- 6.Do not put it in a hot and humid place near the fire Storage.
- 7.When the battery is wet by water, please fully remove the water Wipe it clean. If it is deformed, please stop using it.

## FCC Warning

This device complies with part 15 of the FCC Rules. Operation is subject to the following two conditions: (1) This device may not cause harmful interference, and (2) this device must accept any interference received, including interference that may cause undesired operation.

Any Changes or modifications not expressly approved by the party responsible for compliance could void the user's authority to operate the equipment.

**Note:** This equipment has been tested and found to comply with the limits for a Class B digital device, pursuant to part 15 of the FCC Rules. These limits are designed to provide reasonable protection against harmful interference in a residential installation. This equipment generates uses and can radiate radio frequency energy and, if not installed and used in accordance with the instructions, may cause harmful interference to radio communications. However, there is no guarantee that interference will not occur in a particular installation. If this equipment does cause harmful interference to radio or television reception, which can be determined by turning the equipment off and on, the user is encouraged to try to correct the interference by one or more of the following measures:

- Reorient or relocate the receiving antenna.
- Increase the separation between the equipment and receiver.
- Connect the equipment into an outlet on a circuit different from that to which the receiver is connected.
- Consult the dealer or an experienced radio/TV technician for help.

The device has been evaluated to meet general RF exposure requirement. The device can be used in portable exposure condition without restriction.