

R E V I S I O N   H I S T O R Y	
OPERATOR	DESCRIPTION
WW	11.15.24 - Initial release
WW	12.20.24 - Customer provided new AW
HY	01.24.25 - Updated AW and PN

REVIEWED

Stamp here

By Dai, Sophie (Shanghai, China) at 10:49 am, Jan 27, 2025

P R O J E C T   I N F O R M A T I O N	
Project #	27818021
Name:	Onward - Keyboard
AW Description:	PT3-AMR-QSG
Other:	IDBM_27818021-11_QSG_Wireless Desktop 900_PRINT
Veritiv Design P/N:	27818021-11-QSG-01A
Veritiv AW P/N:	27818021-11-QSG-01A-252-01527L-C01-ART-01C
Customer P/N:	252-01527L-C01
Customer AW P/N:	TBD
ECO#:	TBD
Printing Method:	Black + Matte AQ

C O A T I N G S	
AQUEOUS:	<div><div><input checked="" type="checkbox"/> GLOSS: SPOT <input type="checkbox"/> OVERALL <input type="checkbox"/></div><div><input checked="" type="checkbox"/> MATTE: SPOT <input type="checkbox"/> OVERALL <input checked="" type="checkbox"/></div></div>
UV:	<div><div><input type="checkbox"/> GLOSS: SPOT <input type="checkbox"/> OVERALL <input type="checkbox"/></div><div><input type="checkbox"/> MATTE: SPOT <input type="checkbox"/> OVERALL <input type="checkbox"/></div></div>
PPLAM:	<div><div><input type="checkbox"/> GLOSS: <input type="checkbox"/> SPECIAL: <input type="checkbox"/></div><div><input type="checkbox"/> MATTE: <input type="checkbox"/> SEE SPECIAL INSTRUCTIONS BELOW</div></div>
SPECIAL:	

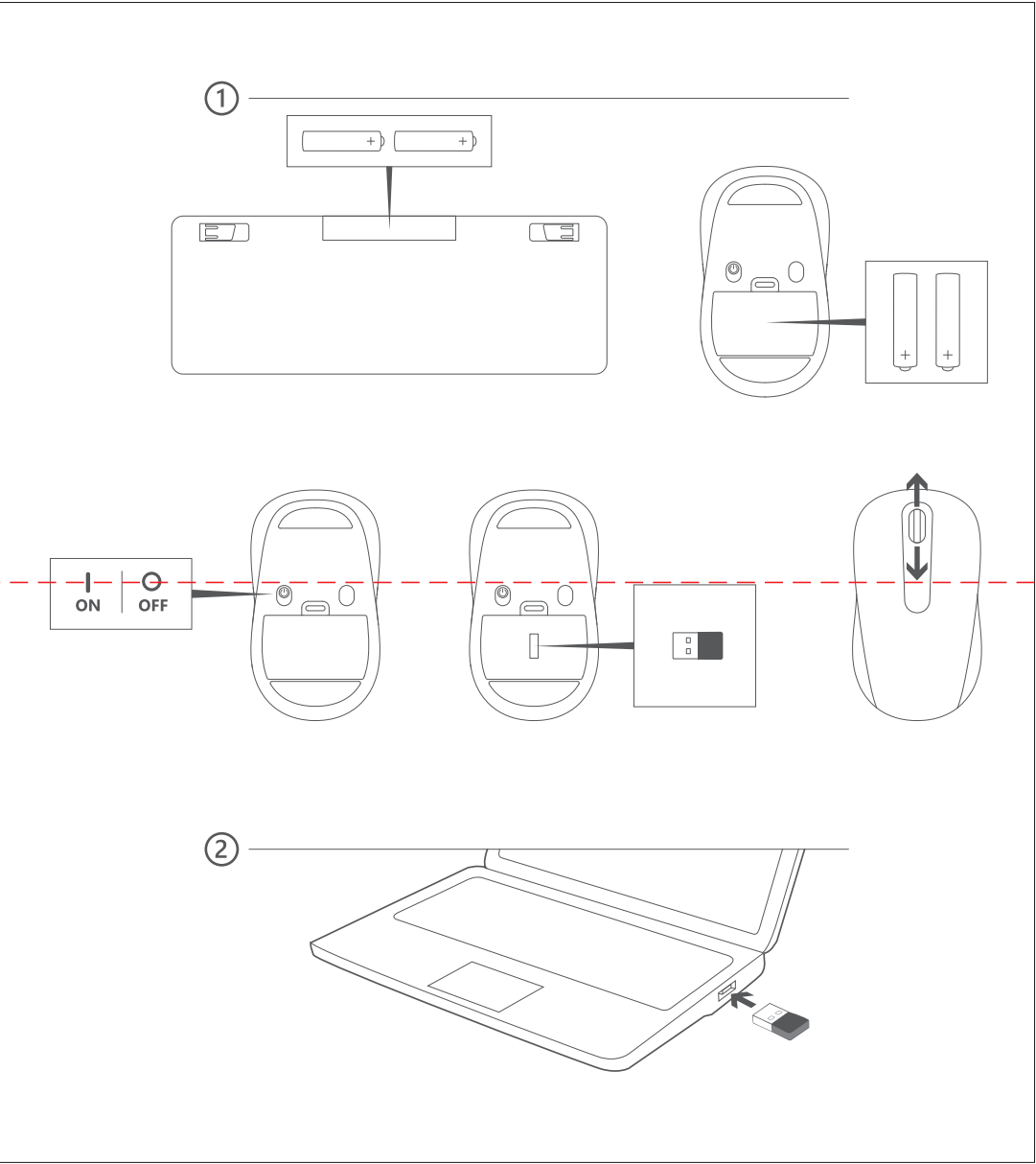
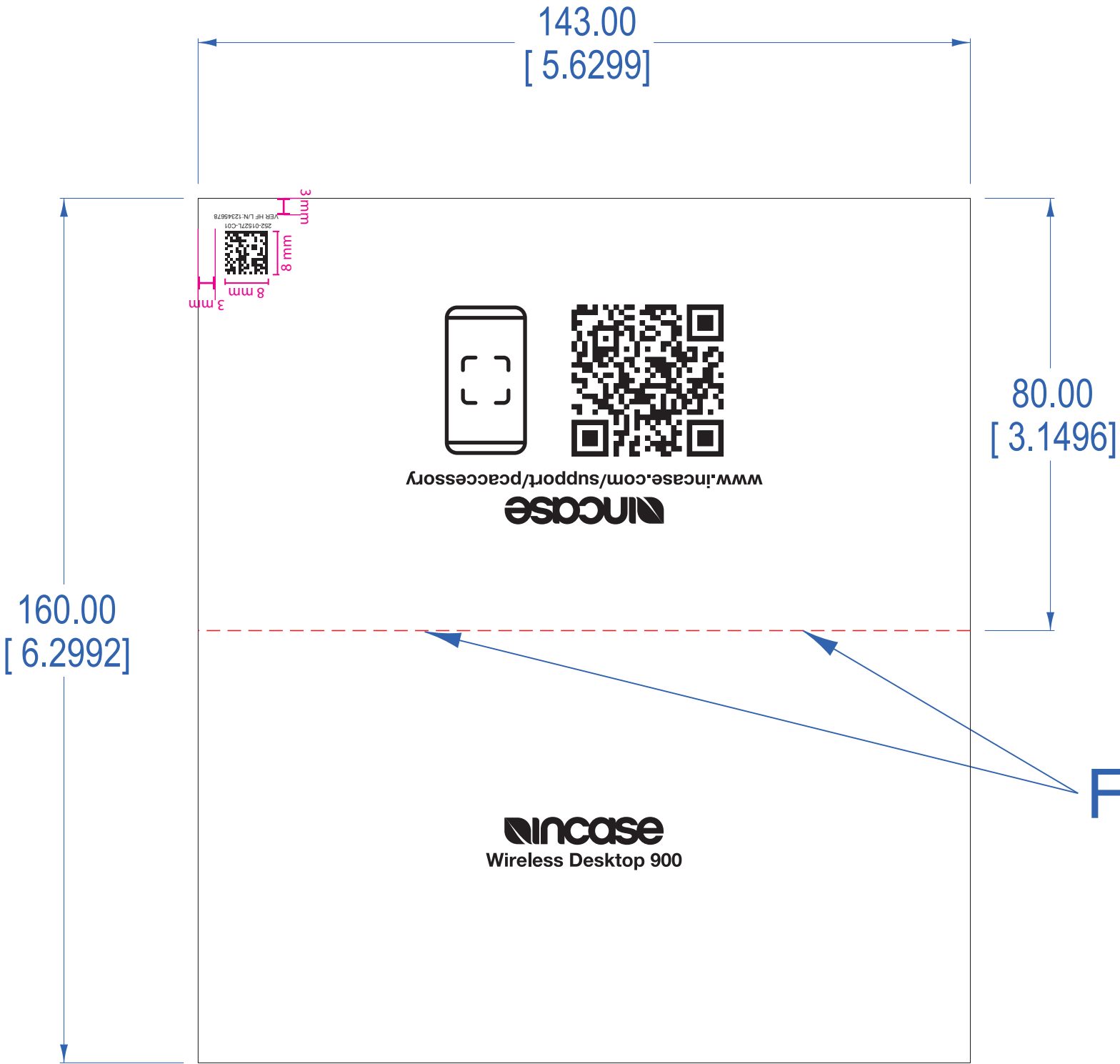
SEPARATIONS

Process Black



**important:** this document does not represent final reproduction and is for content and placement reference only. it is the client's responsibility to check for any errors in spelling, punctuation, alignment and arrangement, that may have occurred during preparation. colors are computer simulated and are not for color matching. pantone® simulations used in this art may not match pantone-identified color standards. use current pantone color reference manuals for accurate color matching.

© Veritiv Operating Company. All rights reserved. The designs, specifications, and other information contained in this document are confidential, proprietary, and the intellectual property of Veritiv. This document, and the designs, specifications, and other information contained herein, may not be disclosed, reproduced, or utilized in any manner without the express prior written consent of Veritiv.



**FCC Compliance Statement:** This device complies with Part 15 of the FCC rules. Operation is subjected to the following two conditions: (1) this device may not cause harmful interference, and (2) this device must accept any interference received, including interference that may cause undesired operation.

Changes or modifications not expressly approved by the party responsible for compliance could void your authority to operate the equipment.

This equipment complies with FCC radiation exposure limits set forth for an uncontrolled environment.

This equipment has been tested and found to comply with the limits for a Class B digital device, pursuant to Part 15 of the FCC Rules. These limits are designed to provide reasonable protection against harmful interference in a residential installation. This equipment generates, uses and can radiate radio frequency energy and, if not installed and used in accordance with the instructions, may cause harmful interference to radio communications. However, there is no guarantee that interference will not occur in a particular installation. If this equipment does cause harmful interference to radio or television reception, which can be determined by turning the equipment off and on, the user is encouraged to try to correct the interference by one or more of the following measures:

- Reorient or relocate the receiving antenna.
- Increase the separation between the equipment and receiver.
- Connect the equipment into an outlet on a circuit different from that to which the receiver is connected.
- Consult the dealer or an experienced radio/TV technician for help.

This device contains licence-exempt transmitter(s)/receiver(s) that comply with Innovation, Science and Economic Development (ISED) Canada's licence-exempt RSS(s). Operation is subject to the following two conditions: (1) this device may not cause interference, and (2) this device must accept any interference, including interference that may cause undesired operation of the device.

The device has been evaluated to meet general RF exposure requirement.

Cet appareil contient des émetteurs/récepteurs exemptés de licence qui sont conformes aux flux RSS exempts de licence du Canada pour l'innovation, la Science et le développement économique (ISDE). Le fonctionnement est soumis aux deux conditions suivantes: (1) ce dispositif ne peut pas causer d'interférence, et (2) ce dispositif doit accepter toute interférence, y compris les interférences pouvant causer un fonctionnement indésirable du dispositif. L'appareil a été évalué pour répondre aux exigences générales d'exposition aux RF.