

witi sports

witi 体感球拍套装
Witi Motion Sensing Racket Set

基本参数

产品名称:witi 体感球拍套装
产品型号:WITI BMT-SET

包装内含

名称	数量
主机	1
体感球拍	1
球拍腕带	1

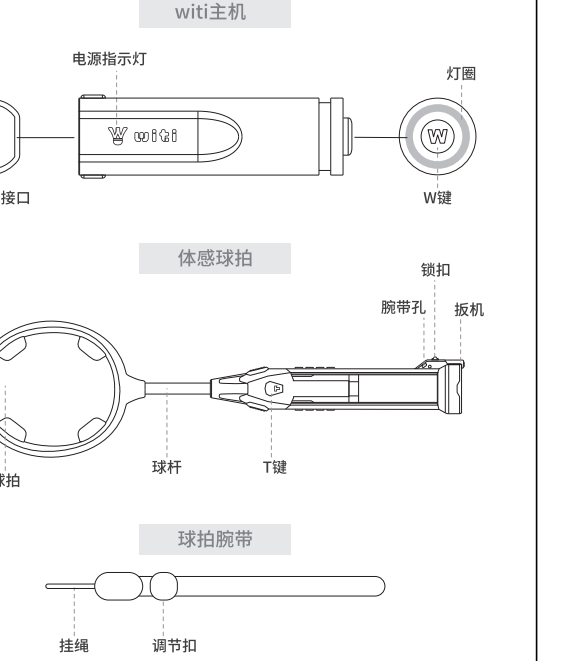
主机

- 充电额定输入:5V
- 使用功率:4W
- 电池容量:650mAh
- 充电时间:2小时
- 使用时间:16小时
- 待机时间:60天(满电时)
- 蓝牙:BLE5.1 2.4GHz

说明:

- 电池充电、待机和使用时长,均为witi实验测试数据

产品结构



安装步骤

Step1 打开体感球拍的锁扣

球拍朝下,锁扣往上推移,为打开解锁状态

Step2 将主机塞进体感球拍

将主机type-c接口朝向球拍,塞入,直到球拍扳机锁住主机

Step3 锁住体感球拍的锁扣

球拍朝下,锁扣往下移到LOCK,为锁住状态

Step4 系上挂绳

将腕带细绳索那端从腕带孔穿孔处穿过,再系上

拔出主机

Step1 球拍朝下,锁扣往上推

球拍朝下,锁扣往上推移,为打开解锁状态

Step2 扣开扳机

扣开扳机,主机自动弹出

Step3 轻拔主机,并稍微旋转

将主机轻轻拔出,快拔出时稍微旋转一下,就能顺利拔出主机

连接App

Step1 在电脑、手机或平板的应用商店搜索"WitiSports",下载并安装App,手机用户可直接扫描下图二维码下载。

Step2 打开已安装了"WitiSports"App的电脑、手机或平板上的蓝牙。注:若电脑没有蓝牙,需额外购买蓝牙发射器

Step3 打开"WitiSports"App,点击右上角【主机】图标按钮,再点击"Q",添加主机。



Step4 连续短按主机W键,直到出现主机1添加成功的画面。



APP连接多个球拍

Step1 打开App的添加主机页面

打开"WitiSports"App,点击右上角【主机】图标按钮,再点击"Q",添加主机。



Step2 连续短按主机

连续短按第二个主机W键,直到App出现主机2添加成功的画面。



说明:

- App内连接的第一个主机,能操控App,也有校准球拍、确认等功能;
- App内连接的第二个主机,不能操控App,只有在登录账号时能操控,也有校准球拍、确认等功能。

灯光示意图



充电说明

首次使用之前,请先给主机充电

- 将充电线type-c接口插入主机椭圆那端的type-c接口,充电线USB接口可连接适配器(不能高于5V)、电脑、移动电源等;
- 充电时,灯圈灯光闪烁,表示正在充电;
- 充电时,灯圈灯光常亮,表示已经充满;
- 若长期不使用,请充满电存放,并每隔1个月充1次电,以免存放时间过长,影响电池容量;
- 若长时间没有充电,再次充电时,灯圈的灯光不会及时闪烁,属于正常现象;不同批次的主机,充电时,灯圈的灯光颜色可能会变化,具体以实物为准。

维护保养

- 请勿将设备暴露在过冷、过热、潮湿、阳光直射的环境下,设备工作环境温度为0℃~35℃;
- 请勿用清水、清洗剂等清洗,设备防水措施,请用纸巾或软布小心擦拭;
- 请勿掉落、敲打、撞击设备,防止设备变形、损坏;
- 请勿让儿童或宠物吞咬本产品,以免对其造成伤害;
- 请勿私自拆装、维修本产品,如有问题及时咨询售后。

功能操作

开机连接App

短按主机W键,主机灯圈的灯光旋转

关机断开连接

长按主机W键6s以上,直到灯圈的灯光熄灭

校准

根据App提示,按T键校准

网前球

先按住T键,同时挥动球拍,能击打出网前球

退出App当前页面

比赛时,短按主机W键,可退出弹出弹窗

常见问题

主机无法连接App?

确保主机电量充足,且手机已打开蓝牙。点击"WitiSports"App主界面右上角"主机"图标,进入后再点击"Q"图标,再连续短按主机W键,直到App出现提示主机连接成功。

主机电量不足怎么办?

请使用充电线进行充电。

T键按起来没有反应?

拔出主机,重新安装。再点击"WitiSports"App主界面右上角"主机"图标,进入后点击左侧"按检测测",出现羽毛球检测页面,短按T键进行检测。

投屏电视延迟?

建议选择适合的HDMI线连接使用。

主机控制的方向不准确?

校准时一定要按照App页面提示进行操作,即可进行校准。

维修服务

在购买日期后1年内,经本公司售后技术部门确认为正常使用的情况下,因制造工艺或零件造成的故障和损坏,您都将获得免费保修的服务。

免费保修服务不包含以下内容:

1. 购买日期1年以上;
2. 无法提供凭证证明购买日期;
3. 正常使用引起的老化、磨损等,不影响正常使用;
4. 使用不当引起的人为损坏,如接入不合适的适配器、错误安装、不依说明书使用、疏忽造成损坏等;
5. 非产品本身质量问题造成的损坏,如进水、摔坏等;
6. 因不可抗拒力造成的损坏,如地震、火灾等;
7. 腕带等配件不在保修范围内。

(深圳市维体运动科技有限公司享有最终解释权)



Homepage
扫码访问官网

Basic parameters

Product Name:Witi Motion Sensing Racket Set
Product model:WITI BMT-SET

Packaging contains

Name	Number
Joystick	1
Racket	1
Racket strap	1

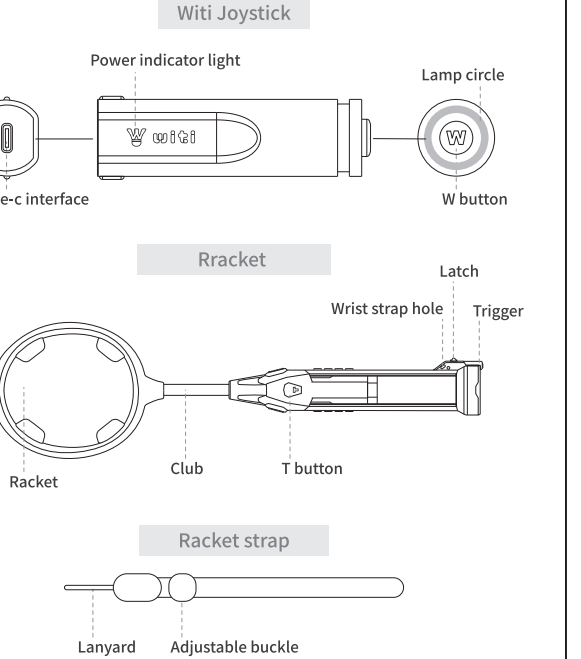
Joystick

- input :5V=1A
- Usage power:4W
- Battery capacity:650mAh
- Charging time:2 hours
- Usage time:16 hours
- Standby time:60 days (When fully charged)
- Bluetooth:BLE5.1 2.4GHz

Illustrate:

- Battery charging, standby, and usage duration are all data from Witi experi-mental testing

Product mix



Installation steps

Step1 Open the lock of the racket

Keep the racket down and push the latch upward,this is unlocked state.

Step2 Insert the joystick into the racket

Place the type-c interface of the joystick towards the racket and insert it,until the racket trigger locks the joystick.

Step3 Lock the buckle of the racket

Keep the racket down and push the latch downward to lock,this is locked state.

Step4 Tie the lanyard

Thread the end of the lanyard through the hole in the wrist strap, and tie it.

Unplug the Joystick

Step1 Keep the racket down and push the latch upward

Keep the racket down and push the latch upward,this is unlocked state.

Step2 Pull the trigger

Pull the trigger and the Joystick will automatically eject.

Step3 Gently unplug the Joystick and rotate it slightly

Gently unplug the Joystick and rotate it slightly when it is about to be pulled out and successfully unplug the Joystick.

Connect App

Step1 Search for 'WitiSports' in the App store of a computer, phone, or tablet, download and Install the App. Mobile users can directly scan the QR code shown in the figure below for download.

Step2 Open Bluetooth on a computer, phone, or tablet PC with the 'WitiSports' App installed. Note: If the computer does not have Bluetooth, an additional Bluetooth transmitter needs to be purchased.

Step3 Open the "WitiSports" App, click on the "Joystick" icon button in the upper right corner, and then click "Q", to add a joystick.



Step4 Continuously press the W button on the joystick and observing the app until the screen showing successful addition of joystick 1 appears.



Connect multiple rackets on the App

Step1 Open the Add Joystick page of the App
Open the "WitiSports" App, click on the "Joystick" icon button in the upper right corner, and then click "Q" to add a joystick.

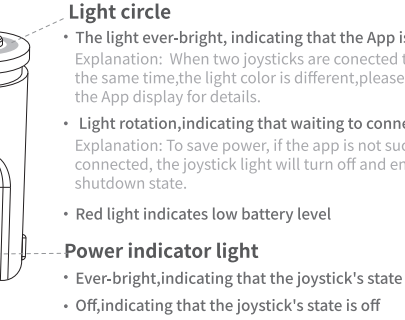


Step2 Continuously short press the Joystick
Continuously press the second joystick W button until the app displays that the second Joystick has been successfully added.



Illustrate:
• The first joystick connected within the app, which can control the app and also has functions such as calibrating the racket and confirming;
• The second joystick connected within the app cannot control the app, only when logging in to the account, can also have a calibration racket, confirming.

Lighting schematic



Charging instructions

Before using it for the first time, please charge the joystick first

- Insert the Type-C interface of the charging cable into the Type-C interface on the elliptical end of the joystick. The USB interface of the charging cable can be connected to adapters (not higher than 5V), computers, mobile power supplies, etc;
- When charging, the light circle flashes, indicating that charging is in progress;
- When charging, the light circle is ever-bright, indicating that it is fully charged;
- If not in use for a long time, please store it fully charged and charge it every 1 month to avoid storing it for too long and affecting the battery capacity;
- If there is no charging for a long time, the light in the light circle will not flash in time when charging again, which is a normal phenomenon;
- The light color of the light circle may change when charging different batches of joysticks, and the specific situation is based on the actual product.

Maintenance

- Do not expose the equipment to environments that are too cold, too hot, humid, or directly exposed to sunlight. The operating temperature of the equipment is between 0 °C and 35 °C;
- Do not use water, cleaning agents, etc. to clean the equipment. The equipment is not waterproof. Please wipe it carefully with a tissue or soft cloth;
- Do not drop, strike, or impact the equipment to prevent deformation or damage;
- Do not allow children or pets to swallow this product to avoid causing harm to it;
- Please do not disassemble or repair this product without permission. If there are any problems, please consult the after-sales service promptly.

Functional operation

Turn on and connect to the App

Short press the W button on the Joystick and the light circle rotate.

Shut down and disconnect

Press and hold the W button of the Joystick for more than 6 seconds until the light in the light circle turns off

Calibration

According to the App prompt, press the T button to calibrate

Near-net ball

Hold down the T button first and swing the racket,so that you can hit a Near-net ball

Exit the current page of the App

During the competition, short press the W button on the Joystick to call up the exit pop-up window

Frequently asked question

Can't the Joystick connect to the App?

Ensure that the joystick has sufficient power and the phone's Bluetooth is on. Click the "Joystick" icon in the upper right corner of the "WitiSports" app homepage,enter and click the "Q" icon,and then press the W button of the Joystick briefly until the app prompts that the Joystick connection is successful.

What to do if the joystick battery is low?

Please use a charging cable for charging.

The T button press without any response?

Unplug the joystick and reinstall it. Then click the "Joystick" icon on the upper right corner of the "WitiSports" App homepage, enter and click the "Key detection" on the left side to display the badminton detection page, and press the T button briefly to detect.

Projection TV delay?

It is recommended to choose a suitable HDMI cable connection for use.

The direction controlled by the Joystick inaccurate??

When calibrating, be sure to follow the prompts on the App page to proceed with calibration.

Warranty service

Within one year after the purchase date, if confirmed as normal use by our company's after-sales technical department, you will receive a free warranty service for faults and damages caused by manufacturing processes or parts.

The free warranty service does not include the following content:

1. The purchase date is more than 1 year;
2. Unable to provide evidence to prove the purchase date;
3. Aging, wear, etc. caused by normal use shall not affect normal use;
4. Human damage caused by improper use, such as improper adapter connection, incorrect installation, failure to follow instructions, and damage caused by negligence;
5. Damage caused by non product quality reasons, such as water ingress, falling, etc.;
6. Damage caused by force majeure, such as earthquakes, fires, etc.;
7. Wrist straps and other accessories are not covered by the warranty.

Shenzhen Witi Sports Technology Co., Ltd

深圳市维体运动科技有限公司

官网:www.witisports.com

电话:0755-86523347

地址:深圳市南山区粤海街道高新区高新七道20号南新工业村R2-B座3层

Shenzhen Witi Sports Technology Co., Ltd

www.witisports.com

After-sale Email:business@qimengkeji.net

Address:3rd Floor, Building R2-B, No. 020 Gaoxin South 7th Road, Nanshan District, Shenzhen