

# **FLEXIBLE AHA MAT**

**Model : AHA-MUSE1**

**Instruction Manual**

**FCC ID : 2BCOG - AHAMUSE1**

**CSE Co.,Ltd**

## - AHA-MAT(Specification)

- . **PRODUCT : FLEXIBLE AHA MAT**
- . **MODEL : AHA-MUSE1**
- . **SIZE : 1245mm x 2665mm**
- . **WEIGHT : 3.5kg**
- . **Time of Charging : More Than 2 hours**
- . **Footstep size : 250mm x 250mm**
- . **Footstep quantity : 40EA**

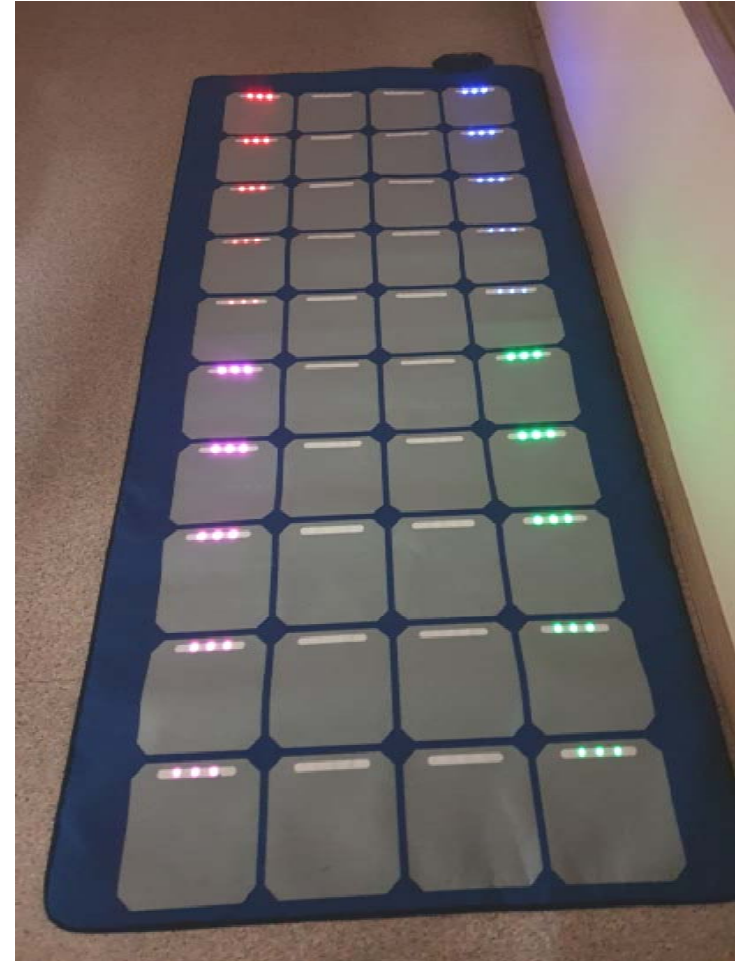


- . **Rating**
  - . **Charger : Mobile Phone Charger C-TYPE / Output : DC5V, 2A**
  - . **Battery : DC3.7V, 2300mA(Li-polymer) Charging Volt : DC4.2V / Discharging Volt : DC3V**
- . **Purpose : Exercise equipment for dementia and fall prevention that helps improve memory and strengthen lower body strength.**
- . **An internal battery device.**
- . **Safety Functions : When in standby mode without operating for approximately 5 minutes, power saving mode is enabled, which reduces battery consumption.**  
**If you want to turn off the power saving function, press the RESET button.**

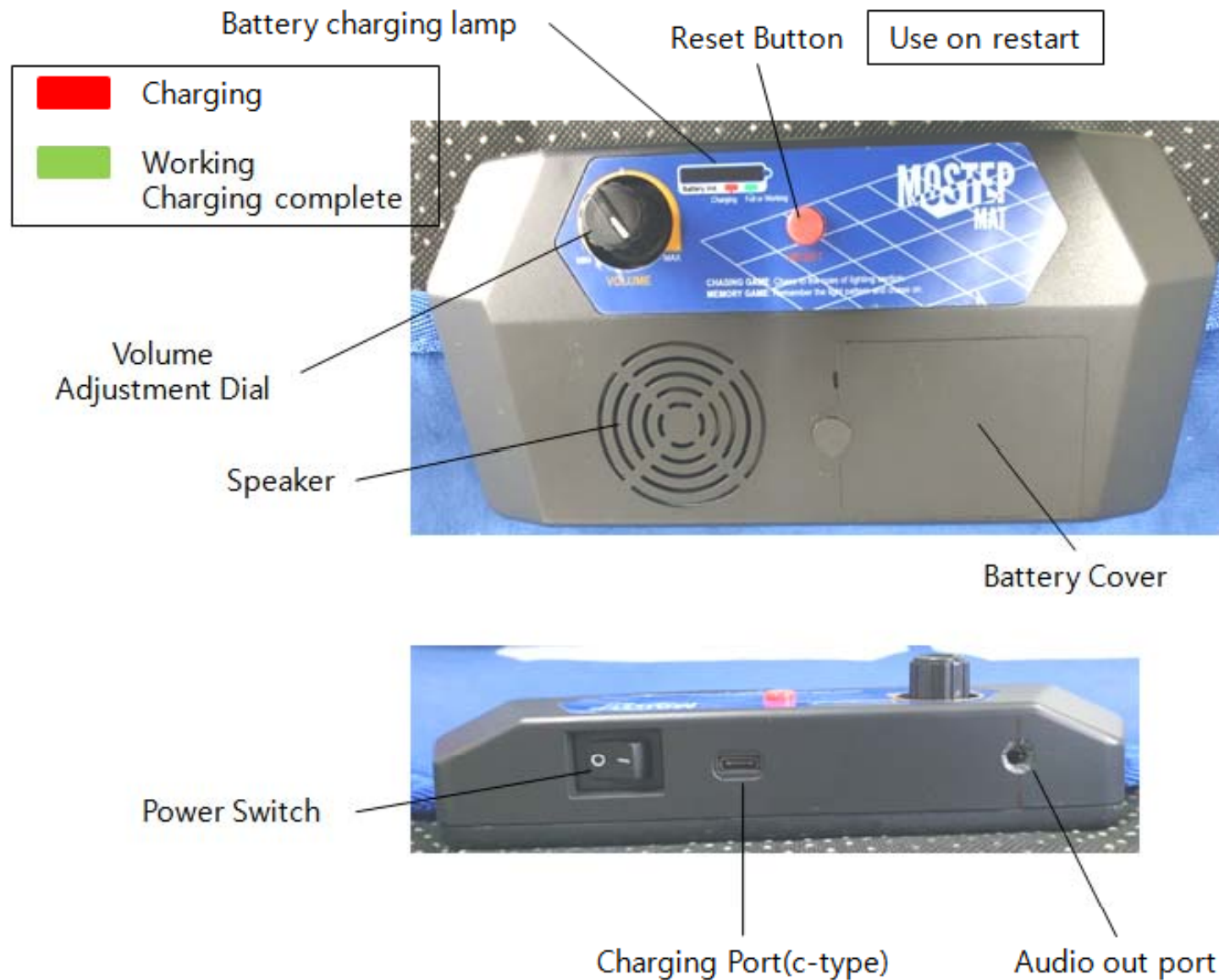
## - AHA-MUSE1(PRODUCT FEATURES)

### . PRODUCT FEATURES

- (1). Built-in battery type
- (2). Power on/off function when battery is used.
- (3). Speakers sound during operation.
- (4). External speaker connection available.
- (5). Speaker volume control function
- (6). Mobile App interlocking operation function.
- (7). Mat operation mode function.



## - AHA-MUSE1(CONTROLLER)



## - AHA-MUSE1(MCU Specification)



- MCU
- Manufacturer : Espressif Systems
- Model : ESP32-WROOM-32E
- EMC Certi\_No : R-R-Idk-ESP32WROOM32E
- FCC ID:2AC7Z-ESP32WROOM32E



## - AHA-MUSE1(How to use (mat mode))

- 1). Turn on the power switch shown in Figure 1.
- 2). The lamp on the mat tread plate is illuminated as shown in Figure 2.
- 3). Step on the footrest to select the pattern as shown in Figure 3.
- 4). The first (start) line flashes a green lamp twice to signal the start.  
A red lamp is illuminated on the start footrest.(See Figure 4)
- 5). When you step on a footrest with a red lamp on, you will hear a speaker tone and the red lamp will illuminate continuously on the next footstool. After the end, the green lamp flashes three times on the end line to exit and enters the initial pattern selection mode.
- 6). Select the pattern you want and repeat No 4-5 above.



Figure 1.



Figure 3.

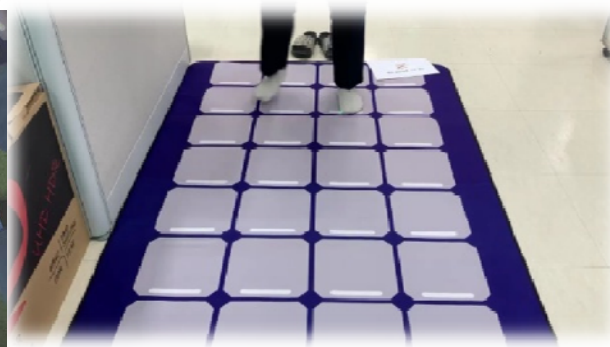


Figure 4.



Figure 2.

## - AHA-MUSE1(How to Use (Application Interworking Mode))

- 1). Install the supplied AHA-MUSE APP on your phone.
  - 2). When the installation is complete, an AHAPP application icon is created as shown in Figure 1.
  - 3). Power on the mat before starting AHAPP.
  - 4). Click the AHAPP icon. The Welcome screen is then illuminated as shown in Figure 2.
  - 5). Click the Start AHA button in Figure 2 to the Bluetooth setup screen as shown in Figure 3.
  - 6). Activate your phone's Bluetooth settings. Then click the Scan button in Figure 3. Then select the Bluetooth displayed on the screen as shown in Figure 4. Then click the Connect button. If Status: Connected is displayed as shown in Figure 5, the Bluetooth setup is completed normally.
  - 7). When you click the Play button, the Play screen turns on as shown in Figure 6.
  - 8). Enter numbers from 1 to 196 in the numeric entry column in Figure 6 and click the Start button.
- After about two to three seconds, the mat will execute the selected number of patterns in the same way as using the mat single mode.

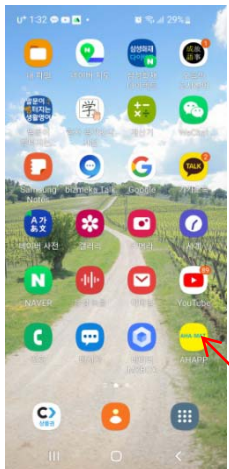


Figure 1.



Figure 2.

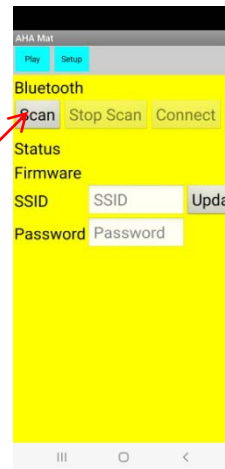


Figure 3.

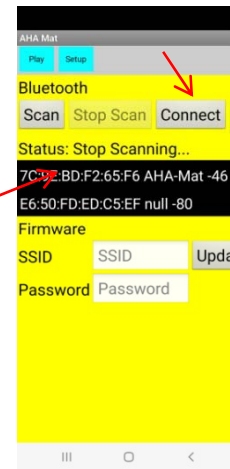


Figure 4.

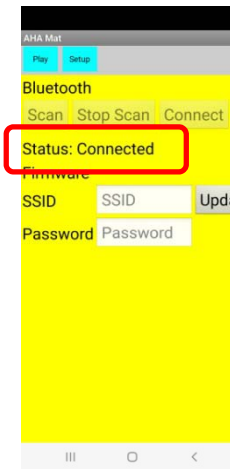


Figure 5.

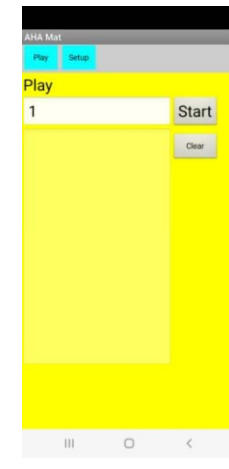


Figure 6.

## English

This device complies with Part 15 of the FCC Rules/Innovation Science and Economic Development Canada's licence-exempt RSS standard(s). Operation is subject to the following two conditions:

- (1) this device may not cause harmful interference, and
- (2) this device must accept any interference received, including interference that may cause undesired operation of the device.

## WARNING:

Any changes or modifications to this unit not expressly approved by the party responsible for compliance could void the user's authority to operate the equipment.

### **FCC Part 15.105 statement**

This equipment has been tested and found to comply with the limits for a Class B digital device, pursuant to part 15 of the FCC Rules. These limits are designed to provide reasonable protection against harmful interference in a residential installation.

This equipment generates, uses and can radiate radio frequency energy and, if not installed and used in accordance with the instructions, may cause harmful interference to radio communications. However, there is no guarantee that interference will not occur in a particular installation. If this equipment does cause harmful interference to radio or television reception, which can be determined by turning the equipment off and on, the user is encouraged to try to correct the interference by one or more of the following measures:

- Reorient or relocate the receiving antenna.
- Increase the separation between the equipment and receiver.
- Connect the equipment into an outlet on a circuit different from that to which the receiver is connected.
- Consult the dealer or an experienced radio/TV technician for help.