



FCC TEST REPORT

FCC ID: 2BCN3-LU-RMT02

On Behalf of

LEDGlow Lighting, LLC

Wireless Remote

Model No.: LU-RMT02, LU-RM03

Prepared for : LEDGlow Lighting, LLC
Address : 444 Commerce Lane Ste:B West Berlin, NJ08091, USA

Prepared By : Shenzhen Alpha Product Testing Co., Ltd.
Address : Building i, No.2, Lixin Road, Fuyong Street, Bao'an District,
518103, Shenzhen, Guangdong, China

Report Number : A2307222-C02-R01
Date of Receipt : August 4, 2023
Date of Test : August 4, 2023-September 5, 2023
Date of Report : September 5, 2023
Version Number : V0

TABLE OF CONTENTS

Description	Page
1. Summary of Standards And Results	5
1.1. Description of Standards and Results	5
2. General Information	6
2.1. Description of Device (EUT)	6
2.2. Accessories of Device (EUT)	7
2.3. Tested Supporting System Details	7
2.4. Block Diagram of connection between EUT and simulators	7
2.5. Test Mode Description	7
2.6. Test Conditions	8
2.7. Test Facility	8
2.8. Measurement Uncertainty	8
2.9. Test Equipment List	9
3. Power Line Conducted Emission Test	11
3.1. Block Diagram of Test Setup	11
3.2. Test Limits	11
3.3. Configuration of EUT on Test	12
3.4. Operating Condition of EUT	12
3.5. Test Procedure	12
3.6. Test Results	13
4. Radiated Emission Test and Band Edge Test	14
4.1. Block Diagram of Test Setup	14
4.2. Test Limit	15
4.3. Configuration of EUT on Test	16
4.4. Operating Condition of EUT	16
4.5. Test Procedure	16
4.6. Test Results	17
5. Occupied Bandwidth Test	23
5.1. Block Diagram of Test Setup	23
5.2. Test Limit	23
5.3. Test Procedure	23
5.4. Test Results	23
6. Transmission time	24
6.1. Standard Requirement Test limit	24
6.2. Method of measurement	24
6.3. Test Setup	24
6.4. Results	24
7. Antenna Requirement	26
7.1. Standard Requirement	26
7.2. Antenna Connected Construction	26
7.3. Results	26
8. Test Setup Photo	27
9. Photos Of The EUT	28

TEST REPORT DECLARATION

Applicant : LEDGlow Lighting, LLC
Address : 444 Commerce Lane Ste:B West Berlin, NJ08091, USA
Manufacturer : Ningbo Laidishine Electronic Technology Co., Ltd.
Address : No. 15-101 Bld. Huiding Chuangzhi Zone No. 299 Siming East Rd., Jiangkou Street,
Fenghua District, Ningbo, China
EUT Description : Wireless Remote
(A) Model No. : LU-RMT02, LU-RM03
(B) Trademark : LEDGlow

Measurement Standard Used:

FCC Rules and Regulations Part 15 Subpart C Section 15.231

ANSI C63.10-2013

The device described above is tested by Shenzhen Alpha Product Testing Co., Ltd. to determine the maximum emission levels emanating from the device and the severe levels of the device can endure and its performance criterion. The test results are contained in this test report and Shenzhen Alpha Product Testing Co., Ltd. is assumed full responsibility for the accuracy and completeness of test. Also, this report shows that the EUT is technically compliant with the FCC Part15 requirements.

This report applies to above tested sample only. This report shall not be reproduced in parts without written approval of Shenzhen Alpha Product Testing Co., Ltd.

Tested by (name + signature).....:

Lucas Pang
Project Engineer



Approved by (name + signature).....:

Reak Yang
Project Manager



Date of issue.....:

September 5, 2023

Revision History

Revision	Issue Date	Revisions	Revised By
V0	September 5, 2023	Initial released Issue	Lucas Pang

1. SUMMARY OF STANDARDS AND RESULTS

1.1. Description of Standards and Results

The EUT have been tested according to the applicable standards as referenced below:

EMISSION			
Description of Test Item	Test Requirement	Standard Paragraph	Results
Power Line Conducted Emission Test	FCC Part 15	Section 15.207	N/A
Spurious Emission Test	FCC Part 15	Section 15.231&15.209	P
Occupied bandwidth	FCC Part 15	Section 15.231	P
Transmission time	FCC Part 15	Section 15.231	P
Band edge Requirement	FCC Part 15	Section 15.231	P
Antenna Requirement	FCC Part 15	Section 15.203	P
Note: 1. P is an abbreviation for Pass. 2. F is an abbreviation for Fail. 3. N/A is an abbreviation for Not Applicable.			

2. GENERAL INFORMATION

2.1. Description of Device (EUT)

EUT Name : Wireless Remote

Model No. : LU-RMT02, LU-RM03

DIFF. : It's just that the product label and model name are different, and the circuit and principle are the same. All tests are made with the LU-RMT02 model.

Power supply : DC 9V from battery(3*3V)

SRD

Operation frequency : 315MHz

Channel No. : 1

Modulation type : ASK

Antenna Type : PCB Antenna, max gain 0dBi

Software version : V1.0

Hardware version : V1.0

2.2. Accessories of Device (EUT)

Accessories : /
Manufacturer : /
Model : /
Power supply : /

2.3. Tested Supporting System Details

No.	Description	Manufacturer	Model	Serial Number	Certification
1.	N/A	N/A	N/A	N/A	N/A

2.4. Block Diagram of connection between EUT and simulators



2.5. Test Mode Description

Test mode:

Mode	Channel	Frequency(MHz)
ASK	1	315

Note:

1. The test was used to control EUT work in Continuous TX mode, and select test channel, wireless mode
2. The EUT has been tested as an independent unit. And Continual Transmitting in maximum power.
3. New battery is used during all tests.
4. For the relevant Conducted Measurement, the temporary antenna connector is used during the measurement. Antenna Connector Impedance: 50Ω, Cable Loss: 1.0 dB

2.6. Test Conditions

Temperature range	21-25°C
Humidity range	40-75%
Pressure range	86-106kPa

2.7. Test Facility

Shenzhen Alpha Product Testing Co., Ltd.

Building i, No.2, Lixin Road, Fuyong Street, Bao'an District, 518103, Shenzhen, Guangdong, China

June 21, 2018 File on Federal Communication Commission

Registration Number: 293961

July 15, 2019 Certificated by IC

Registration Number: 12135A

2.8. Measurement Uncertainty

(95% confidence levels, k=2)

Item	Uncertainty
Uncertainty for Power point Conducted Emissions Test	1.63dB
Uncertainty for Radiation Emission test in 3m chamber (below 30MHz)	3.5dB
Uncertainty for Radiation Emission test in 3m chamber (30MHz to 1GHz)	3.74dB(Polarize: V)
	3.76dB(Polarize: H)
Uncertainty for Radiation Emission test in 3m chamber (1GHz to 25GHz)	3.77dB(Polarize: V)
	3.80dB(Polarize: H)
Uncertainty for radio frequency	5.06×10 ⁻⁸ GHz
Uncertainty for conducted RF Power	0.40dB
Uncertainty for temperature	0.2°C
Uncertainty for humidity	1%
Uncertainty for DC and low frequency voltages	0.06%

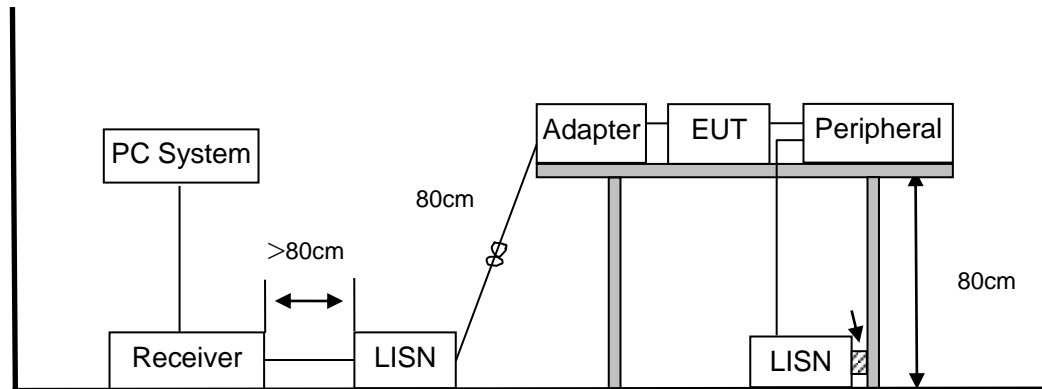
2.9. Test Equipment List

Equipment	Manufacture	Model No.	Firmware version	Serial No.	Last cal.	Cal Interval
9*6*6 anechoic chamber	CHENYU	9*6*6	/	N/A	2022.05.17	3Year
Spectrum analyzer	ROHDE&SCHWARZ	FSV40-N	2.3	102137	2023.08.16	1Year
Spectrum analyzer	Agilent	N9020A	A.14.16	MY499100060	2023.08.16	1Year
Receiver	ROHDE&SCHWARZ	ESR	2.28 SP1	1316.3003K03-10 2082-Wa	2023.08.16	1Year
Receiver	R&S	ESCI	4.42 SP1	101165	2023.08.16	1Year
Bilog Antenna	Schwarzbeck	VULB 9168	/	VULB 9168#627	2023.08.28	1Year
Horn Antenna	SCHWARZBECK	BBHA 9120 D	/	2106	2023.08.19	1Year
Loop Antenna	SCHWARZBECK	FMZB 1519B	/	00128	2023.08.19	1Year
RF Cable	Resenberger	Cable 1	/	RE1	2023.08.16	1Year
RF Cable	Resenberger	Cable 2	/	RE2	2023.08.16	1Year
RF Cable	Resenberger	Cable 3	/	CE1	2023.08.16	1Year
Pre-amplifier	HP	HP8347A	/	2834A00455	2023.08.16	1Year
Pre-amplifier	Agilent	8449B	/	3008A02664	2023.08.16	1Year
L.I.S.N.#1	Schwarzbeck	NSLK8126	/	8126-466	2023.08.16	1Year
L.I.S.N.#2	ROHDE&SCHWARZ	ENV216	/	101043	2023.08.16	1Year
Horn Antenna	SCHWARZBECK	BBHA 9170	/	00946	2023.08.19	1Year
Preamplifier	SKET	LNPA_1840 -50	/	SK2018101801	2023.08.16	1 Year
Power Meter	Agilent	E9300A	/	MY41496628	2023.08.16	1 Year
Power Sensor	DARE	RPR3006W	/	15100041SNO91	2023.08.16	1 Year
Temp. & Humid. Chamber	Teelong	TL-HW408S	/	TL-20191205-01	2023.07.25	1 Year
Switching Mode Power Supply	JUNKE	JK12010S	/	20140927-6	2023.08.16	1 Year
Adjustable attenuator	MWRFTest	N/A	/	N/A	N/A	N/A
10dB Attenuator	Mini-Circuits	DC-6G	/	N/A	N/A	N/A

Software Information			
Test Item	Software Name	Manufacturer	Version
RE	EZ-EMC	Farad	Alpha-3A1
CE	EZ-EMC	Farad	Alpha-3A1
RF-CE	MTS 8310	MWRFtest	V2.0.0.0

3. Power Line Conducted Emission Test

3.1. Block Diagram of Test Setup



3.2. Test Limits

Frequency	Maximum RF Line Voltage	
	Quasi-Peak Level dB(μ V)	Average Level dB(μ V)
150kHz ~ 500kHz	66 ~ 56*	56 ~ 46*
500kHz ~ 5MHz	56	46
5MHz ~ 30MHz	60	50

- Notes:
1. Emission level=Read level + LISN factor-Preamplifier factor + Cable loss
 2. * Decreasing linearly with logarithm of frequency.
 3. The lower limit shall apply at the transition frequencies.

3.3. Configuration of EUT on Test

The following equipment are installed on Power Line Conducted Emission Test to meet the commission requirement and operating regulations in a manner which tends to maximize its emission characteristics in a normal application.

3.4. Operating Condition of EUT

- (1) Setup the EUT as shown as Section 3.1.
- (2) Turn on the power of all equipment.
- (3) Let the EUT work in test mode taking the test.

3.5. Test Procedure

- (1) The EUT was placed on a non-metallic table, 80cm above the ground plane. The EUT Power connected to the power mains through a line impedance stabilization network (L.I.S.N. 1#). This provided a 50-ohm coupling impedance for the EUT (Please refer to the block diagram of the test setup and photographs). The other peripheral devices power cord connected to the power mains through a line impedance stabilization network (L.I.S.N.#2). Both sides of power line were checked for maximum conducted interference. In order to find the maximum emission, the relative positions of equipments and all of the interface cables were changed according to ANSI C63.10:2013 on conducted Emission test.
- (2) The frequency range from 150kHz to 30MHz is checked, the bandwidth of test receiver is set at 9kHz.
- (3) The frequency range from 30MHz to 1000MHz was pre-scanned with a Peak detector and all final readings of measurement from Test Receiver are Quasi-Peak and Average values.
- (4) The test results are reported on Section 3.6.

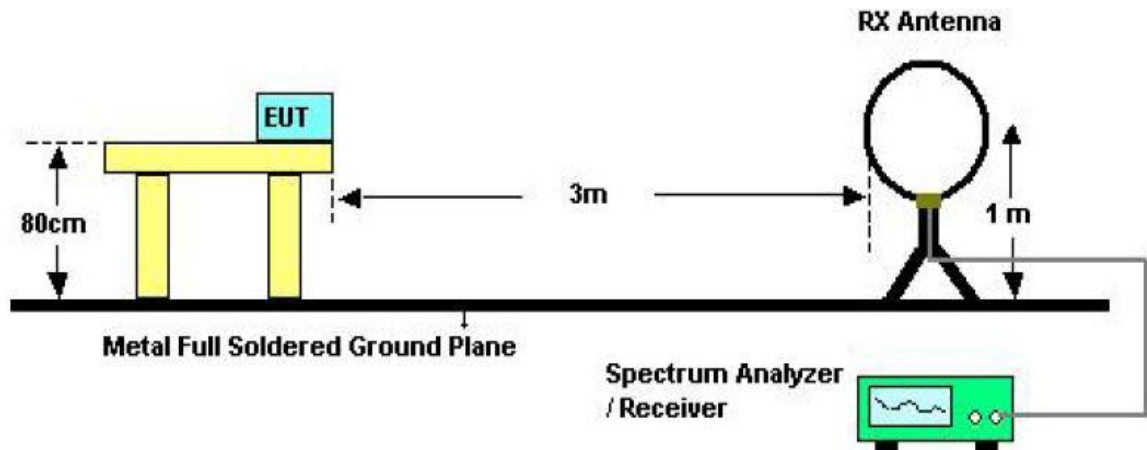
3.6. Test Results

EUT	: Wireless Remote	Temperature	: N/A
M/N	: LU-RMT02	Humidity	: N/A
Test Engineer	: N/A		
Test Mode	: N/A		
Test Voltage	: N/A		
Note:	1. Not applicable (battery powered).		

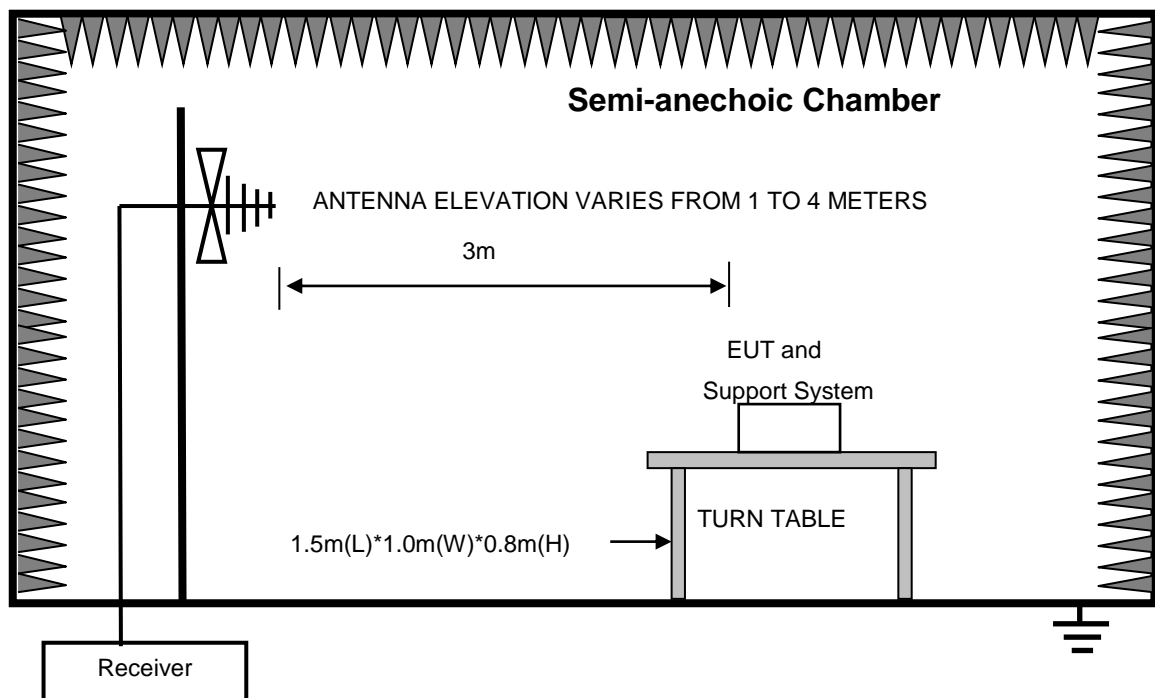
4. Radiated Emission Test and Band Edge Test

4.1. Block Diagram of Test Setup

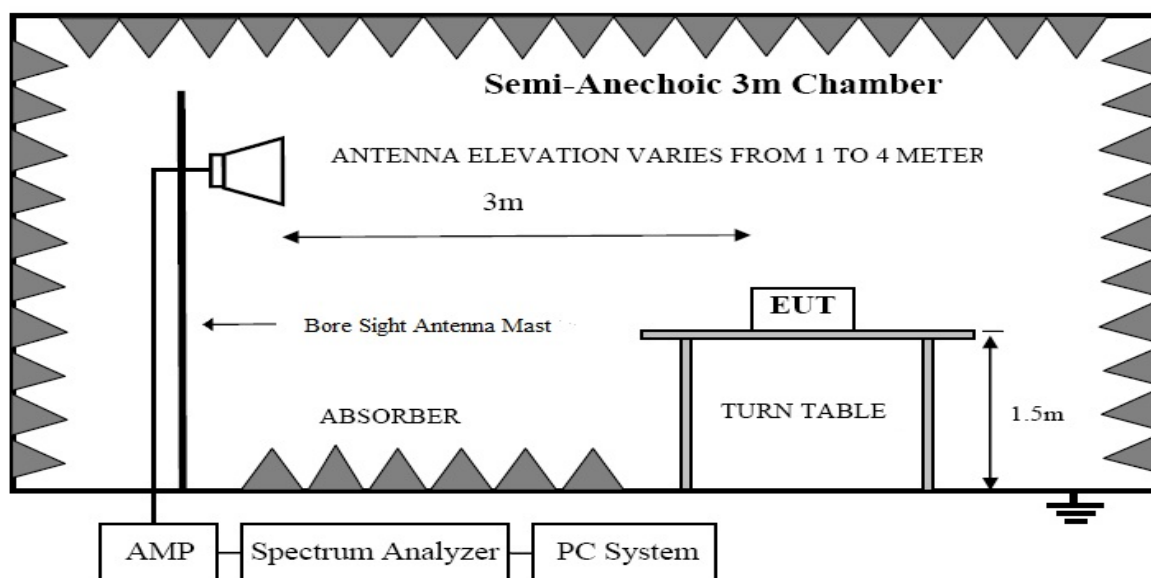
In Semi Anechoic Chamber (3m) Test Setup Diagram for 9KHz~30MHz



In Semi Anechoic Chamber (3m) Test Setup Diagram for 30MHz~1000MHz



In Semi Anechoic Chamber (3m) Test Setup Diagram for Above 1GHz



4.2. Test Limit

Frequency MHz	Distance (Meters)	Field Strengths Limits	
		uV/m	dB uV/m
0.009 ~ 0.490	300	2400/F(kHz)	---
0.490 ~ 1.705	30	24000/F(kHz)	----
1.705 ~ 30	30	30	29.5
30 ~ 88	3	100(3nW)	40
88 ~ 216	3	150(6.8nW)	43.5
216 ~ 960	3	200(12nW)	46
Above 960	3	500(75nW)	54
Carrier frequency	3	50000(AVG)	113.97(Peak) 93.97(AVG)

- Notes:
1. Emission level = Read level + Antenna Factor - Preamp Factor + Cable Loss
 2. The smaller limit shall apply at the cross point between two frequency bands.
 3. Distance is the distance in meters between the measuring instrument, antenna and the closest point of any part of the device or system.
 4. For frequencies above 1000 MHz, the field strength limits are based on average limits. However, the peak field strength of any emission shall not exceed the maximum permitted average limits specified above by more than 20 dB under any condition of modulation.

4.3. Configuration of EUT on Test

The following equipment are installed on Radiated Emission Test to meet the commission requirements and operating regulations in a manner that tends to maximize its emission characteristics in normal application.

4.4. Operating Condition of EUT

- (1) Setup the EUT as shown as Section 4.1.
- (2) Turn on the power of all equipment.
- (3) Let the EUT work in test mode taking the test.

4.5. Test Procedure

- (1) The EUT was placed on a non-metallic table, 80 cm above the ground plane inside a semi-anechoic chamber for below 1GHz and 150 cm above the ground plane inside a semi-anechoic chamber for above 1GHz. An antenna was located 3m from the EUT on an adjustable mast. A pre-scan was first performed in order to find prominent radiated emissions. For final emissions measurements at each frequency of interest, the EUT were rotated and the antenna height was varied between 1m and 4m in order to maximize the emission. Measurements in both horizontal and vertical polarities were made and the data was recorded. In order to find the maximum emission, the relative positions of equipments and all of the interface cables were changed according to ANSI C63.10: 2013 on Radiated Emission test.
- (2) For the radiated emission test above 1GHz:
Place the measurement antenna away from each area of the EUT determined to be a source of emissions at the specified measurement distance, while keeping the measurement antenna aimed at the source of emissions at each frequency of significant emissions, with polarization oriented for maximum response. The measurement antenna may have to be higher or lower than the EUT, depending on the radiation pattern of the emission and staying aimed at the emission source for receiving the maximum signal. The final measurement antenna elevation shall be that which maximizes the emissions. The measurement antenna elevation for maximum emissions shall be restricted to a range of heights of from 1 m to 4 m above the ground or reference ground plane.
- (3) Test antenna was located 4m from the EUT on an adjustable mast. Below pre-scan procedure was first performed in order to find prominent radiated emissions.
 - (a) Change work frequency or channel of device if practicable.
 - (b) Change modulation type of device if practicable.
 - (c) Rotated EUT though three orthogonal axes to determine the attitude of EUT arrangement produces highest emissions
- (4) For harmonic emissions test a appropriate high pass filter was inserted in the input port of AMP
- (5) The frequency range from 9KHz to 150KHz is checked, the bandwidth of test receiver is set at 200Hz.
The frequency range from 150KHz to 30MHz is checked, the bandwidth of test receiver is set at 9KHz.

The frequency range from 30MHz to 1000MHz is checked, the bandwidth of test receiver is set at 120kHz.

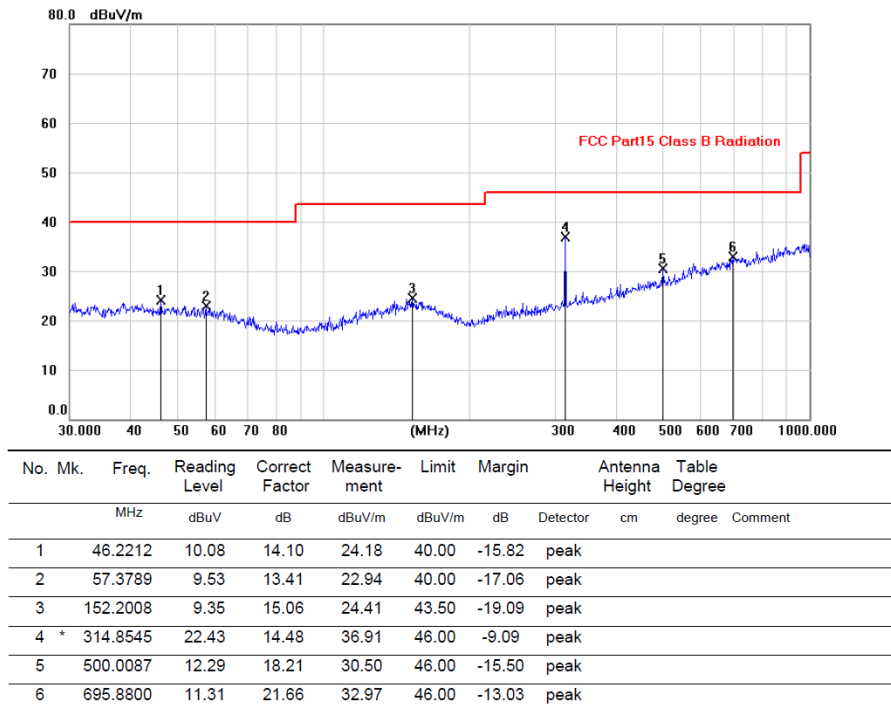
The frequency range from above 1GHz is checked, the bandwidth of Signal Analyzer is set at 1MHz.

- (6) The frequency range from 30MHz to 1000MHz was pre-scanned with a peak detector and all final readings of measurement from Test Receiver are Quasi-Peak values, the frequency range from 1GHz to 6GHz was pre-scanned with a peak detector and all final readings of measurement from Spectrum Analyzer are peak and average values checked, all measurement distance is 3m in 3m semi anechoic chamber.
- (7) Test for all x, y, z axes is performed and only the worst case of X xes was recorded in the test report.
- (8) The test results are reported on Section 4.6.

4.6. Test Results

Frequency Range	: 9KHz~30MHz		
EUT	: Wireless Remote	Temperature	: 24℃
M/N	: LU-RMT02	Humidity	: 56%
Test Engineer	: Lucas		
Test Mode	: TX 315MHz		
Test Results	: PASS		
Note:	1. Note: The amplitude of spurious emissions which are attenuated by more than 20dB below the permissible value has no need to be reported.		

Frequency Range	: 30MHz~1000MHz`		
EUT	: Wireless Remote	Temperature	: 24℃
M/N	: LU-RMT02	Humidity	: 56%
Test Engineer	: Lucas		
Test Mode	: TX 315MHz		
Test Results	: PASS		
Note:	1. The test results are listed in next pages. 2. This mode is worst case mode, and this report only reflected the worst mode. 3. If the limits for the measurement with the quasi-peak detector are met when using a receiver with a peak detector, the test unit shall be deemed to meet both limits and the measurement with the quasi-peak detector need not be carried out.		

Vertical:

Note: 1. *: Maximum data; x: Over limit; l: over margin.

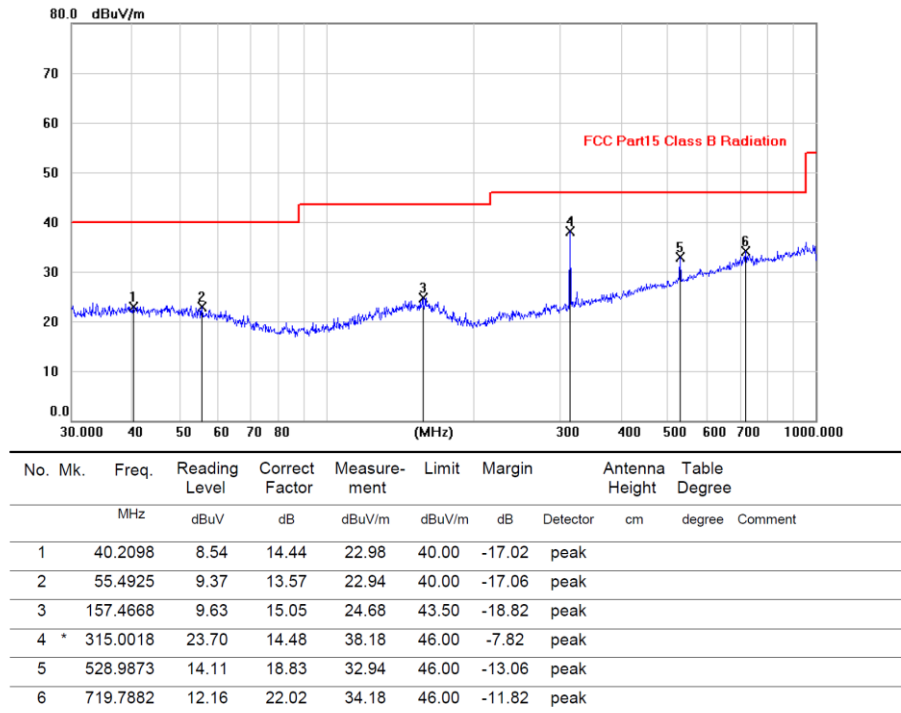
2. Measurement = Reading Level + Correct Factor; Correct Factor = Antenna Factor + Cable Loss.

No.	Frequency (MHz)	Reading (dBuV)	Factor (dB)	Results (dBuV/m)	Limit (dBuV/m)	Margin (dB)	Detector
1	315	22.43	14.48	36.91	97.26	-60.35	PK
2	315	/	/	/	77.26	/	AV

Remark: 1. All readings are Quasi-Peak and Average values.

2. Margin = Result (Result = Reading + Factor) - Limit

3. When peak value applied to AVG limit, the AVG value is not calculated.

Horizontal:

Note: 1. *:Maximum data; x:Over limit; !:over margin.
 2.Measurement=Reading Level+Correct Factor; Correct Factor=Antenna Factor+Cable Loss.

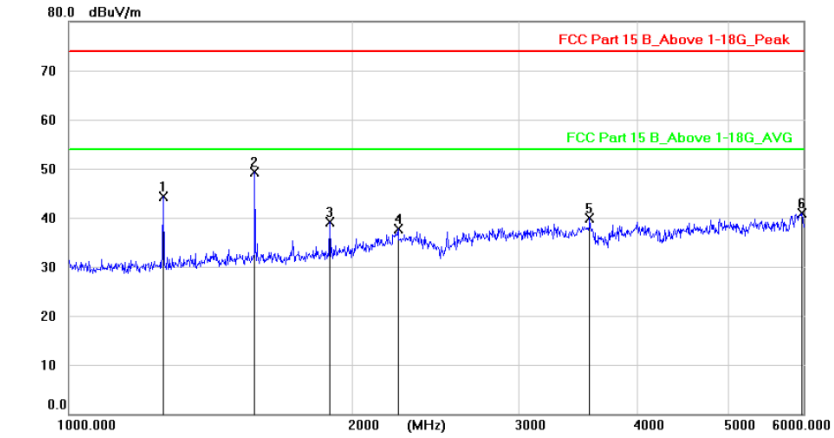
No.	Frequency (MHz)	Reading (dBuV)	Factor (dB)	Results (dBuV/m)	Limit (dBuV/m)	Margin (dB)	Detector
1	315	23.70	14.48	38.18	97.26	-59.08	PK
2	315	/	/	/	77.26	/	AV

Remark: 1. All readings are Quasi-Peak and Average values.

2. Margin = Result (Result =Reading + Factor)-Limi

3. When peak value applied to AVG limit, the AVG value is not calculated.

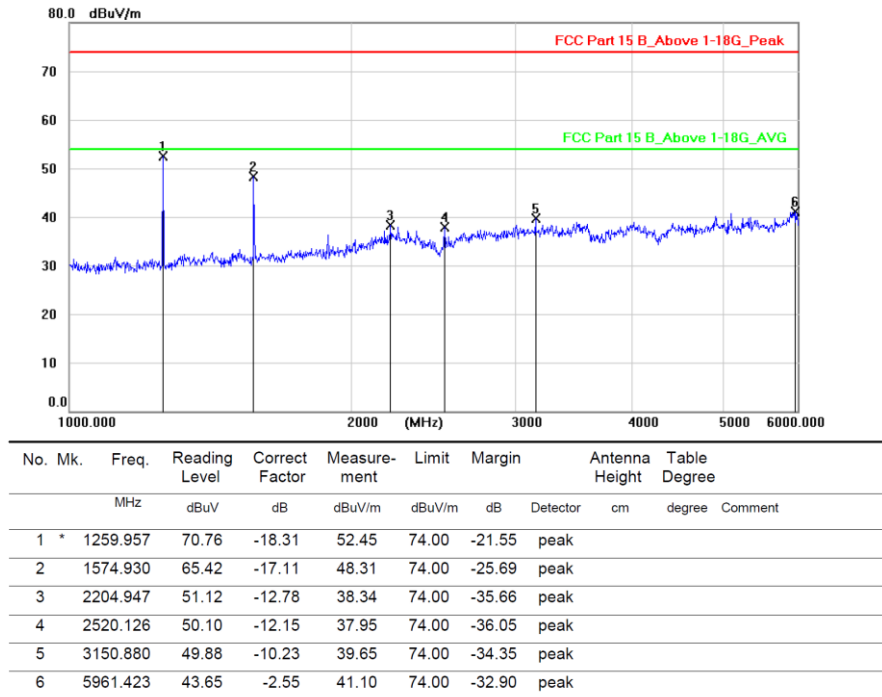
Frequency Range : Above 1GHz			
EUT	: Wireless Remote	Temperature	: 24°C
M/N	: LU-RMT02	Humidity	: 56%
Test Engineer : Lucas			
Test Mode : TX 315MHz			
Test Results : PASS			
Note:	<p>1. Means other frequency and mode comply with standard requirements and at least have 20dB margin.</p> <p>2. Correct Factor=Cable Loss+ Antenna Factor-Amplifier Gain.</p> <p>Result=Reading + Correct Factor.</p> <p>Margin= Result-Limit.</p> <p>3. Spectrum Set for PK measure: RBW=1MHz, VBW=1MHz, Sweep time=Auto, Detector: PK.</p> <p>4. Spectrum Set for AV measure: RBW=1MHz, VBW=3MHz, Sweep time=Auto, Detector: Avg.</p> <p>5. If the limits for the measurement with the average detector are met when using a receiver with a peak detector, the test unit shall be deemed to meet both limits and the measurement with the average detector need not be carried out.</p>		

Vertical:

No. Mk.	Freq.	Reading	Correct	Measure-	Limit	Margin	Antenna	Table
	MHz	dBuV	Factor	ment	dBuV/m	dB	Height	Degree
1	1259.806	62.60	-18.31	44.29	74.00	-29.71	peak	
2 *	1575.118	66.49	-17.11	49.38	74.00	-24.62	peak	
3	1889.728	55.04	-15.89	39.15	74.00	-34.85	peak	
4	2233.310	50.53	-12.74	37.79	74.00	-36.21	peak	
5	3565.957	49.16	-9.31	39.85	74.00	-34.15	peak	
6	5987.471	43.43	-2.51	40.92	74.00	-33.08	peak	

Note: 1. *: Maximum data; x: Over limit; l: over margin.

2. Measurement=Reading Level+Correct Factor; Correct Factor=Antenna Factor+Cable Loss.

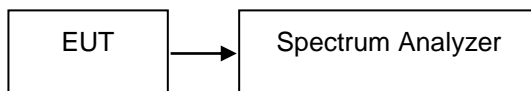
Horizontal:

Note: 1. *: Maximum data; x: Over limit; !: over margin.

2. Measurement = Reading Level + Correct Factor; Correct Factor = Antenna Factor + Cable Loss.

5. Occupied Bandwidth Test

5.1. Block Diagram of Test Setup



5.2. Test Limit

Please refer section RSS-210 & 15.231

According to §15.231(C), The bandwidth of the emission shall be no wider than 0.25% of the center frequency for devices operating above 70MHz and below 900MHz.

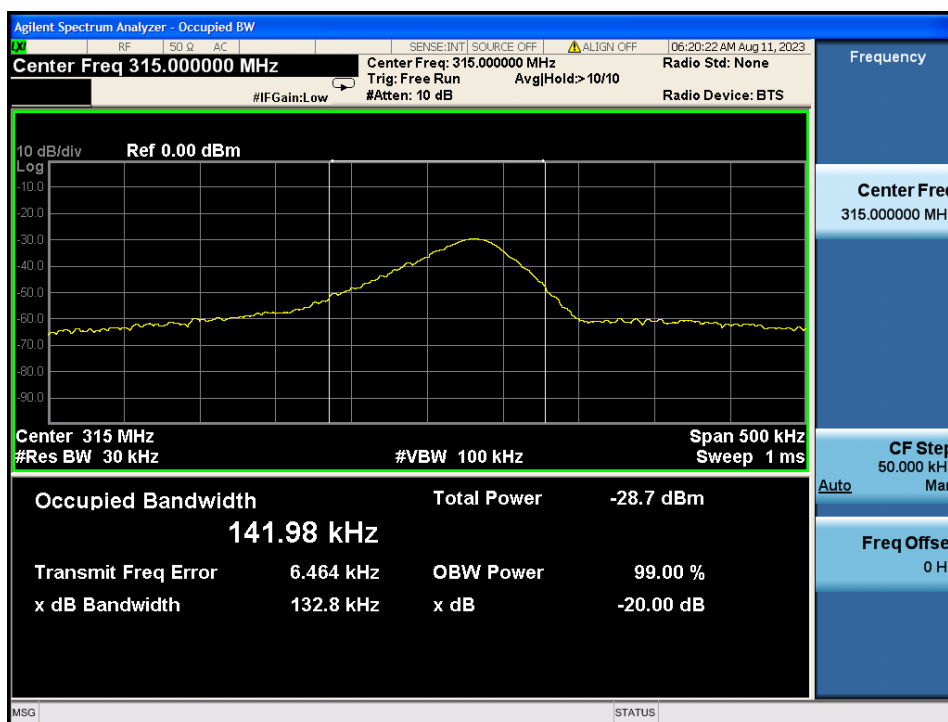
5.3. Test Procedure

- (1) The bandwidth is measured at an amplitude level reduced 20dB from the reference level. The reference level is the level of the highest amplitude signal observed from the transmitter at the fundamental frequency. Once the reference level is established, the equipment is conditioned with typical modulating signal to produce the worst-case (i.e. the widest) bandwidth.
- (2) The test receiver RBW set 30KHz, VBW set 100KHz, Sweep time set auto.

5.4. Test Results

Mode	Frequency (MHz)	20dB Bandwidth (KHz)	99% Bandwidth (KHz)	Limit(kHz)	Results
ASK	315	132.8	141.98	787.5	Pass

Limit = 315MHz * 0.25% = 787.5kHz



6. Transmission time

6.1. Standard Requirement Test limit

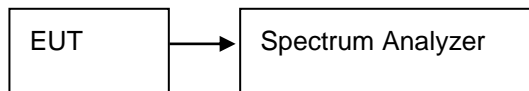
Please refer section RSS-210 & 15.231

According to §15.231(a)(1), A manually operated transmitter shall employ a switch that will automatically deactivate the transmitter within not more than 5 seconds of being released.

6.2. Method of measurement

1. Place the EUT on the table and set it in transmitting mode.
2. Remove the antenna from the EUT and then connect a low loss RF cable from the antenna port to the spectrum analyzer.
3. Set spectrum analyzer Center= 315MHz, Span = 0MHz, Sweep = 5s.
4. Set the spectrum analyzer as RBW, VBW=1MHz,
5. Max hold, view and count how many channel in the band

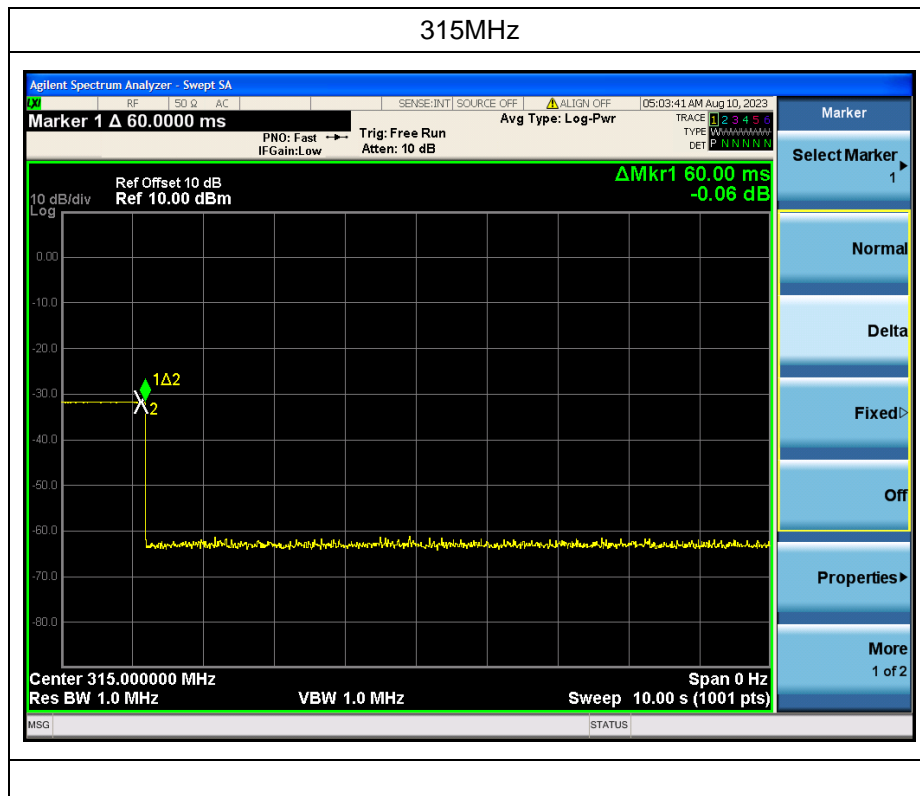
6.3. Test Setup



6.4. Results

Freq (MHz)	Test Result(s)	Limit (s)	Conclusion
315	0.06	< 5s	PASS

EUT After Release the button, EUT emission Continue **0.06s** seconds, Compliance with 15.231 a(1) section.



7. Antenna Requirement

7.1. Standard Requirement

An intentional radiator shall be designed to ensure that no antenna other than that furnished by the responsible party shall be used with the device. The use of a permanently attached antenna or of an antenna that uses a unique coupling to the intentional radiator shall be considered sufficient to comply with the provisions of this Section. The manufacturer may design the unit so that a broken antenna can be replaced by the user, but the use of a standard antenna jack or electrical connector is prohibited.

7.2. Antenna Connected Construction

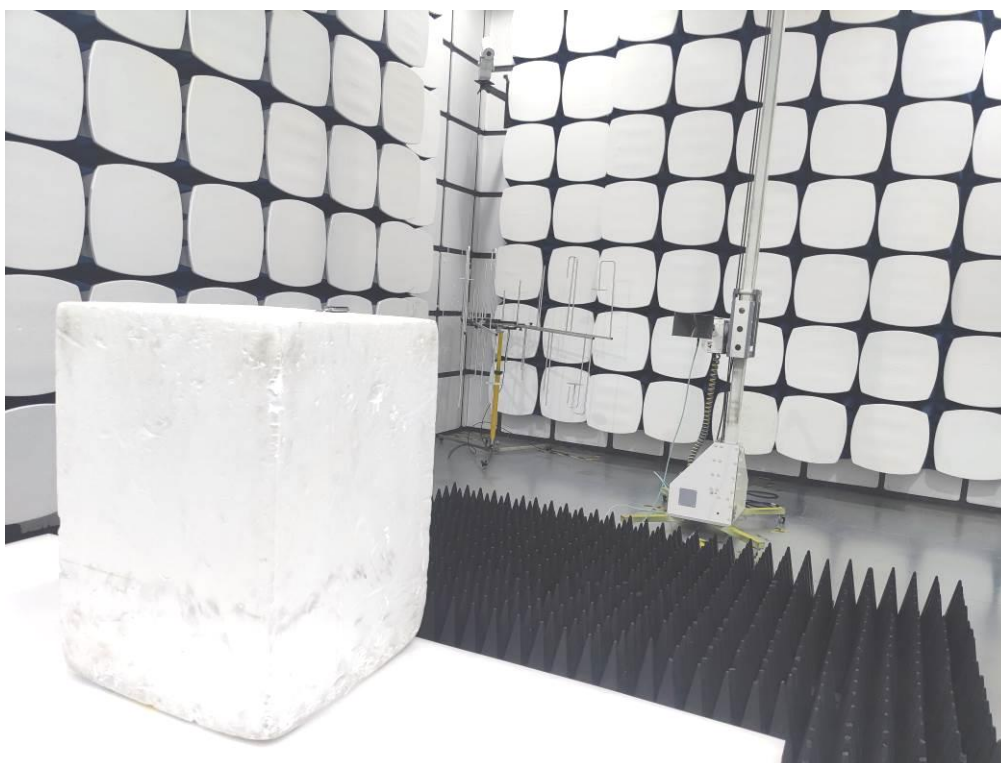
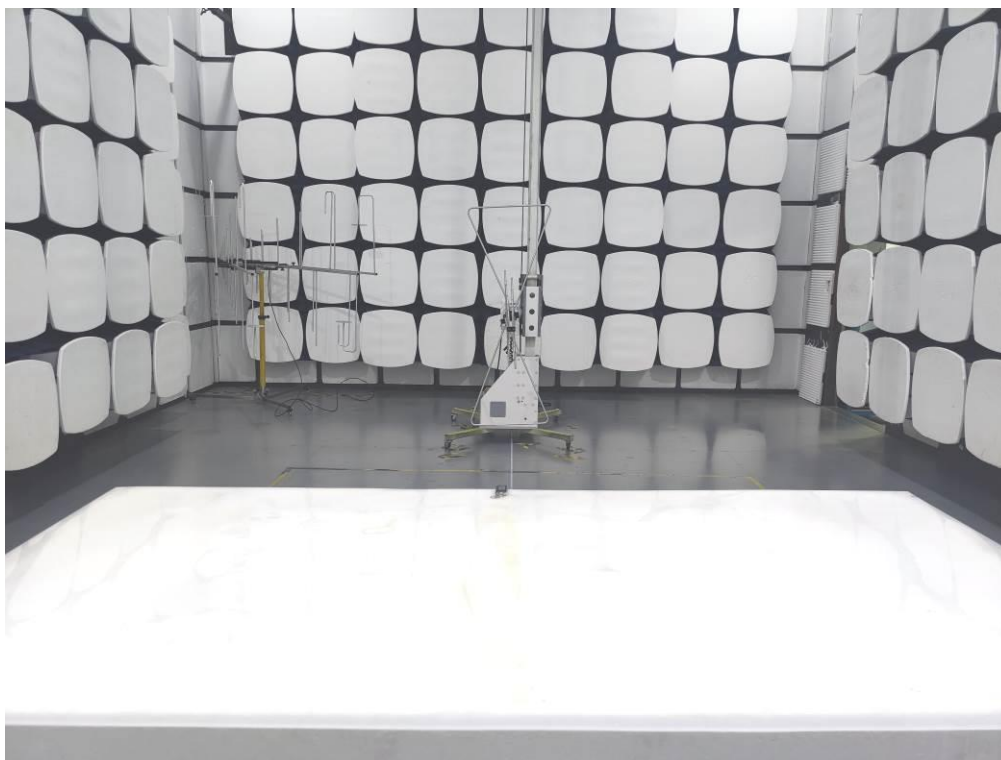
The directional gains of antenna used for transmitting is 0dBi, and the antenna is fixed antenna no consideration of replacement. Please see EUT photo for details.

7.3. Results

The EUT antenna is Internal Antenna. It complies with the standard requirement.

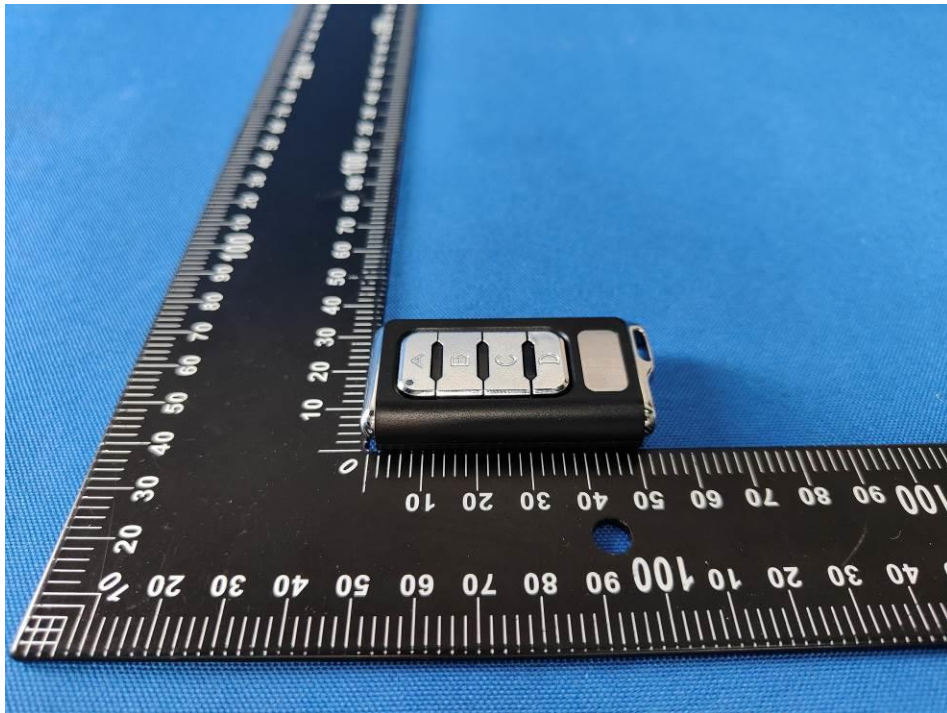
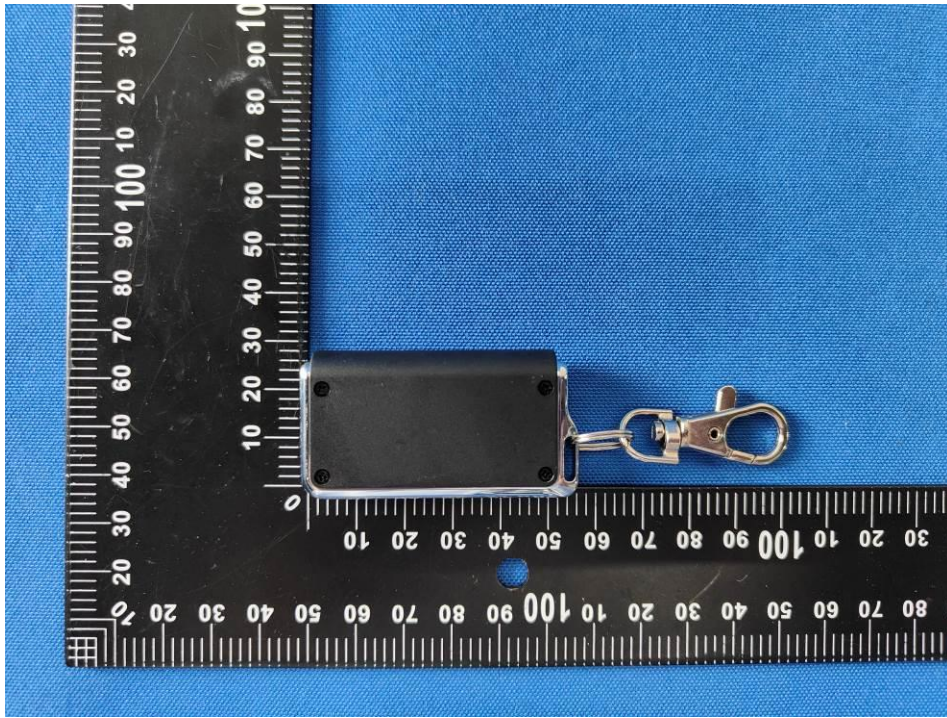
8. Test Setup Photo

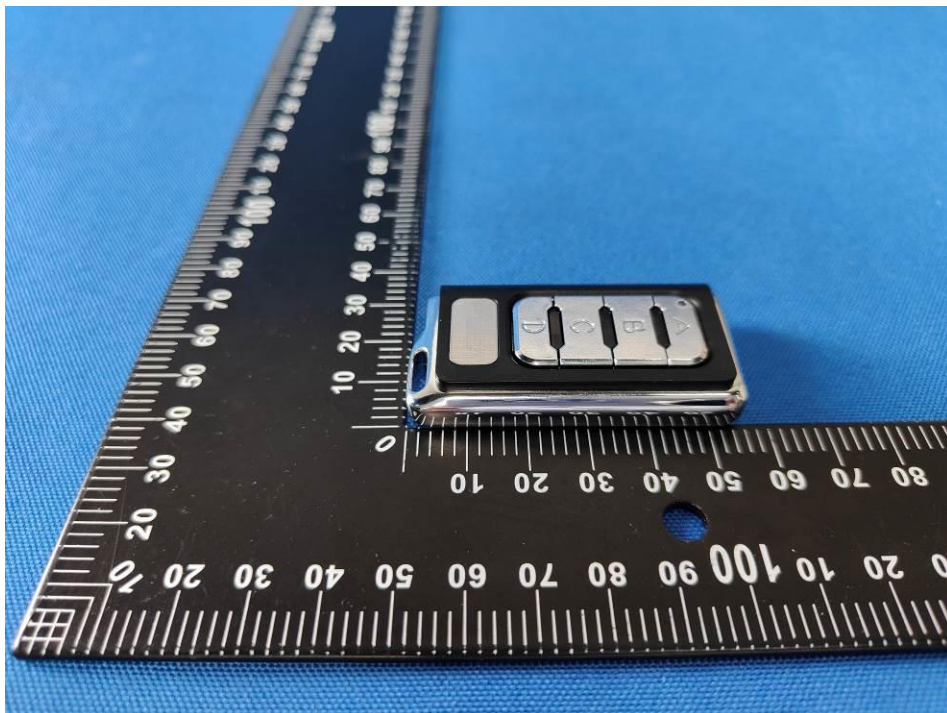
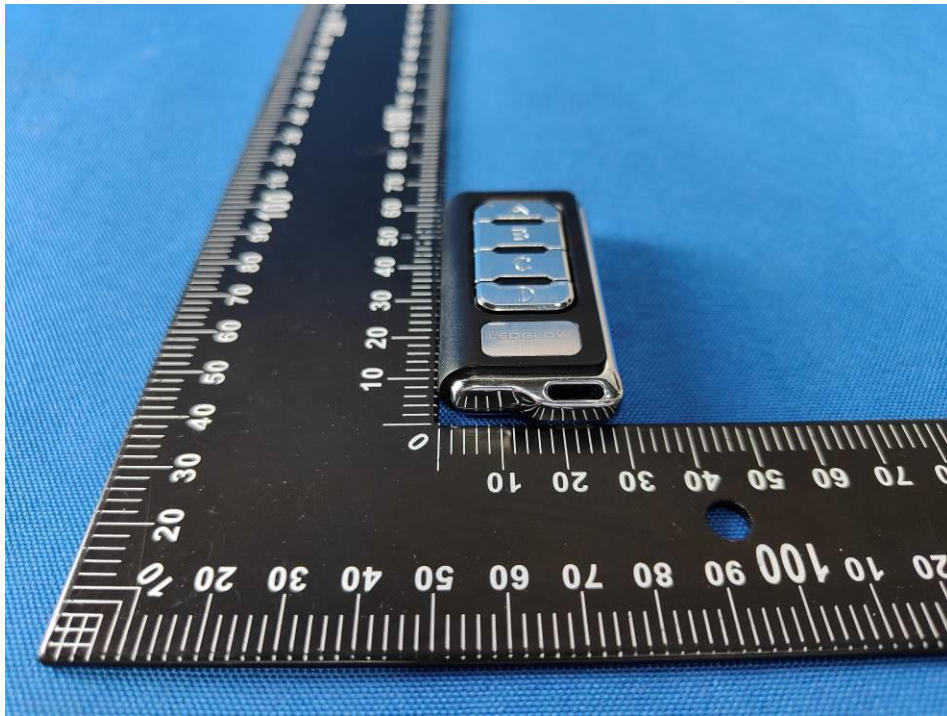
Radiated Emission Test

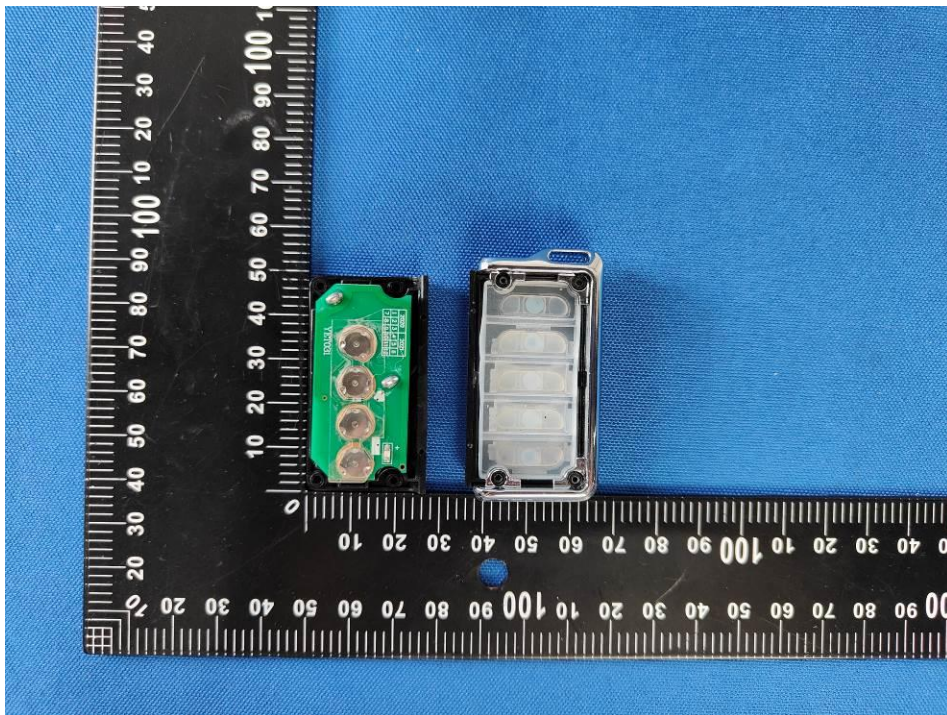
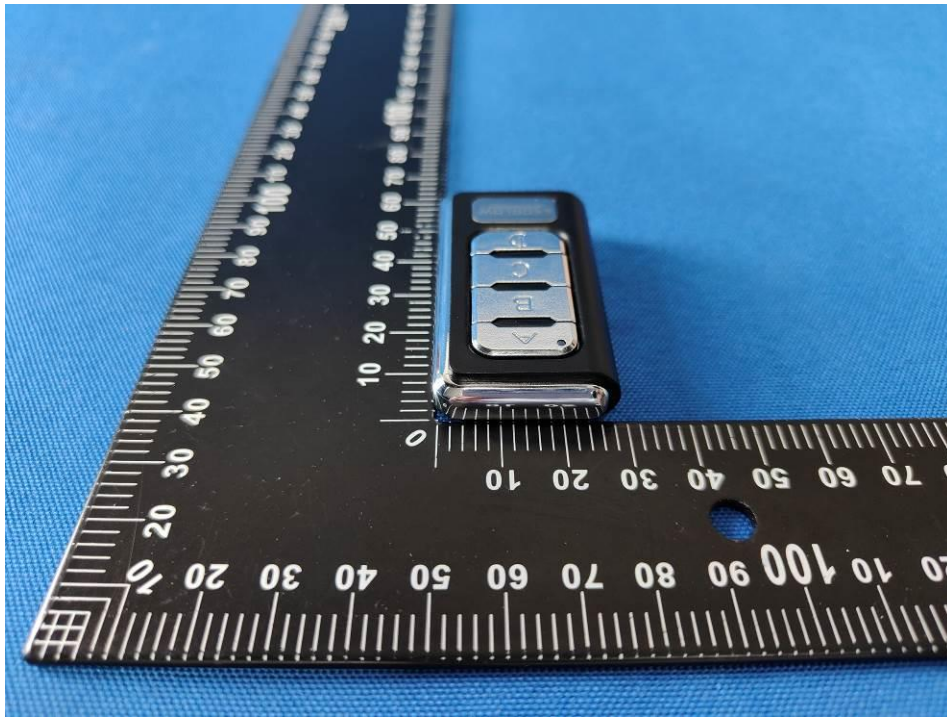


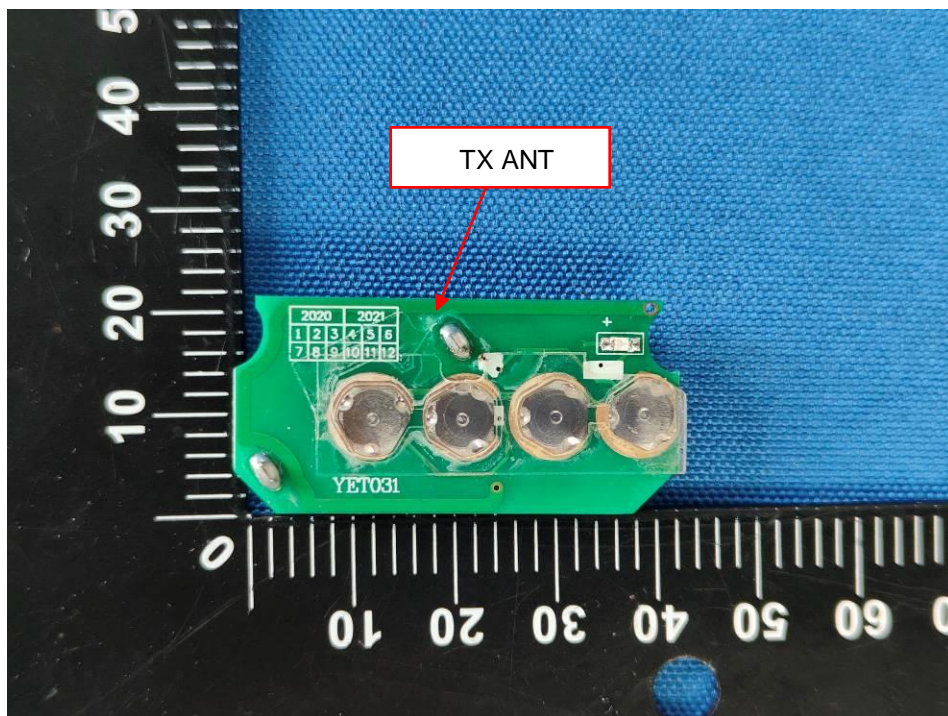
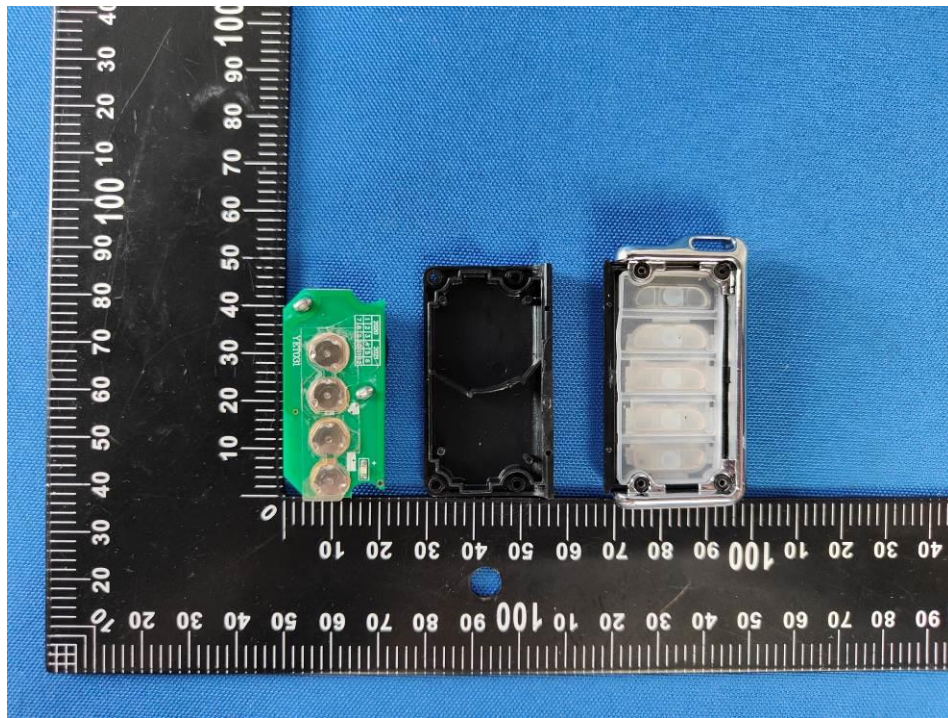
9. Photos Of The EUT

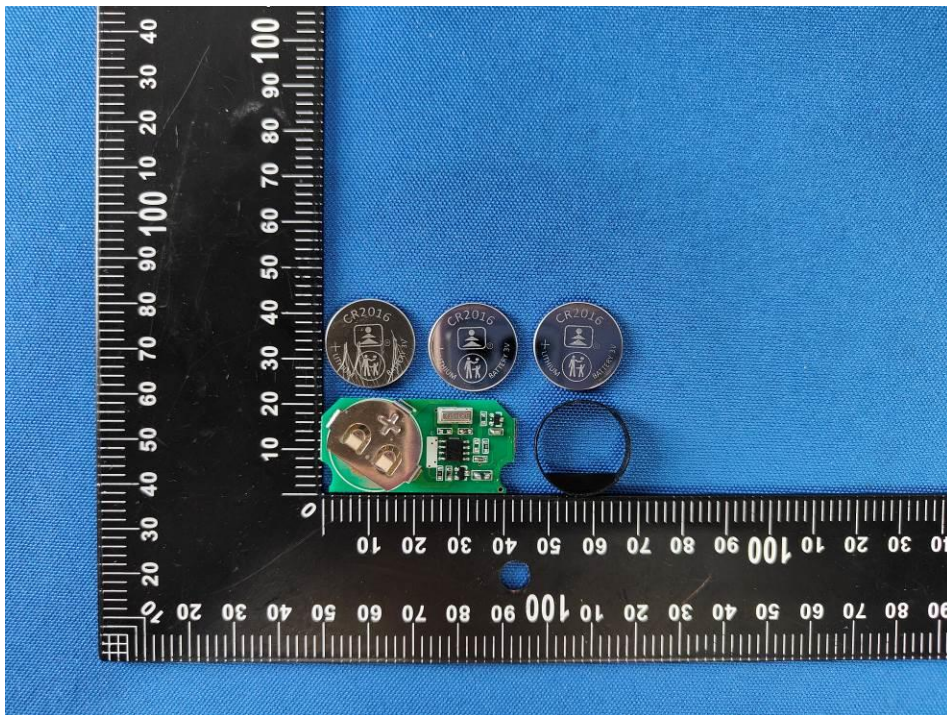
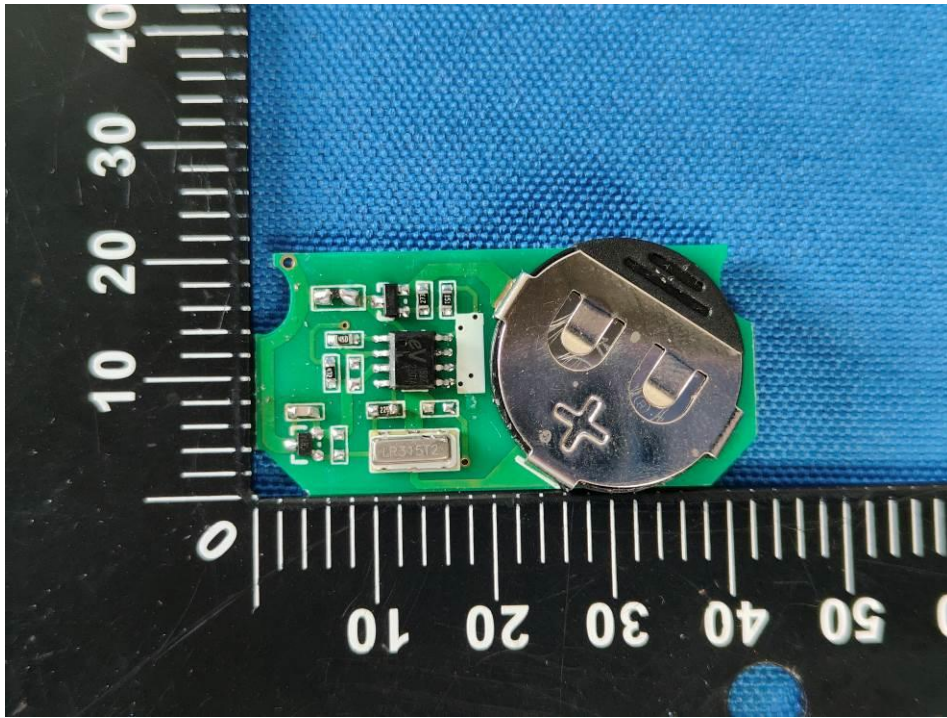














-----END OF REPORT-----