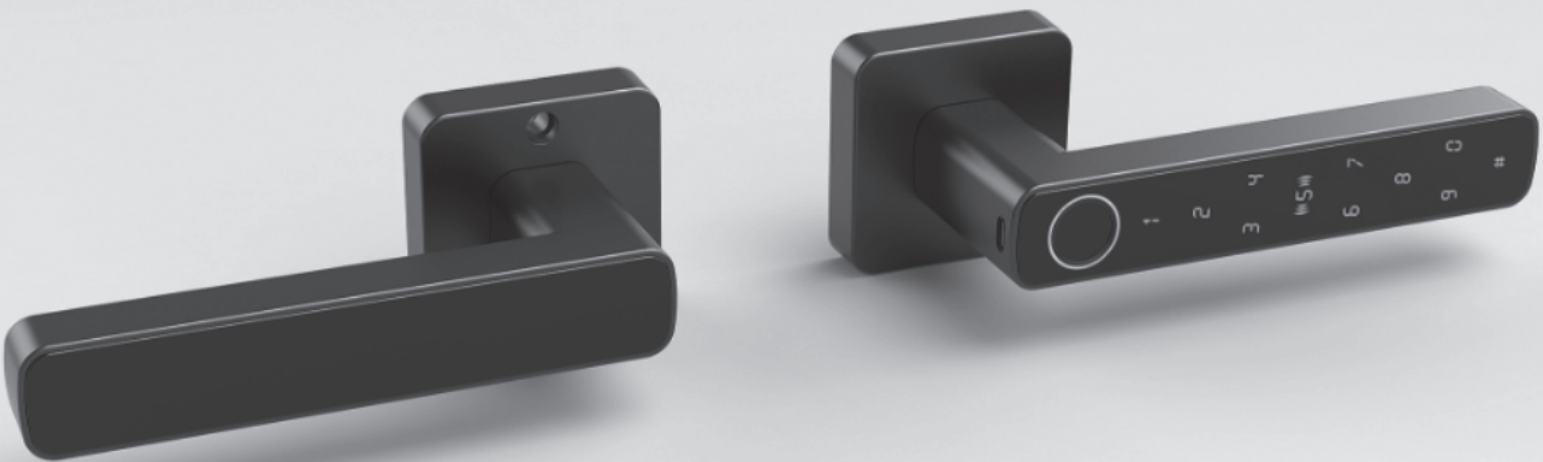


SMART LOCK USER MANUAL

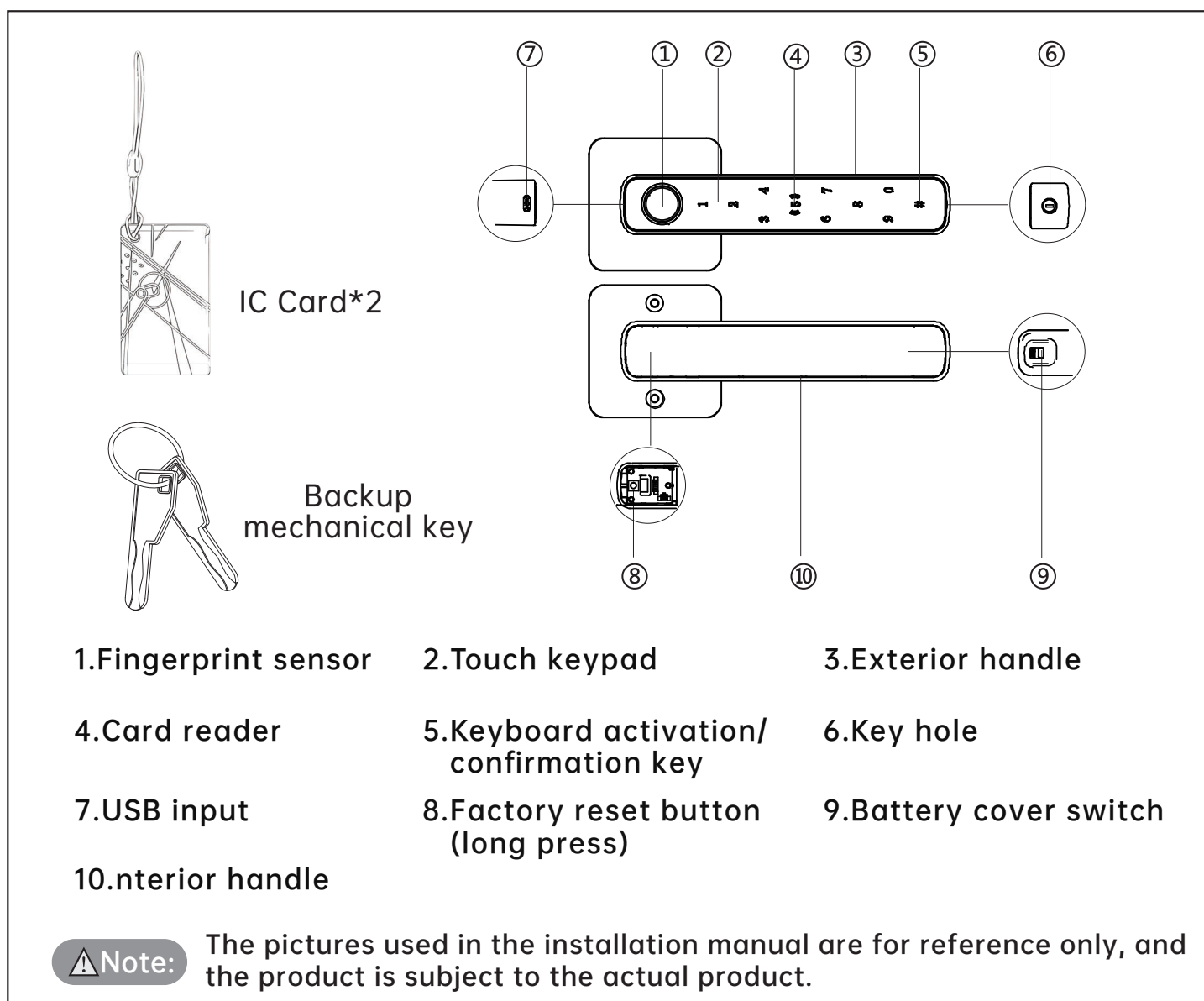


Thank you very much for purchasing our products.

Notice: Please read this manual carefully before use. If have any question, please contact us without hesitate.

1. PRODUCT PICTURE AND LIST

1.1 Product Picture



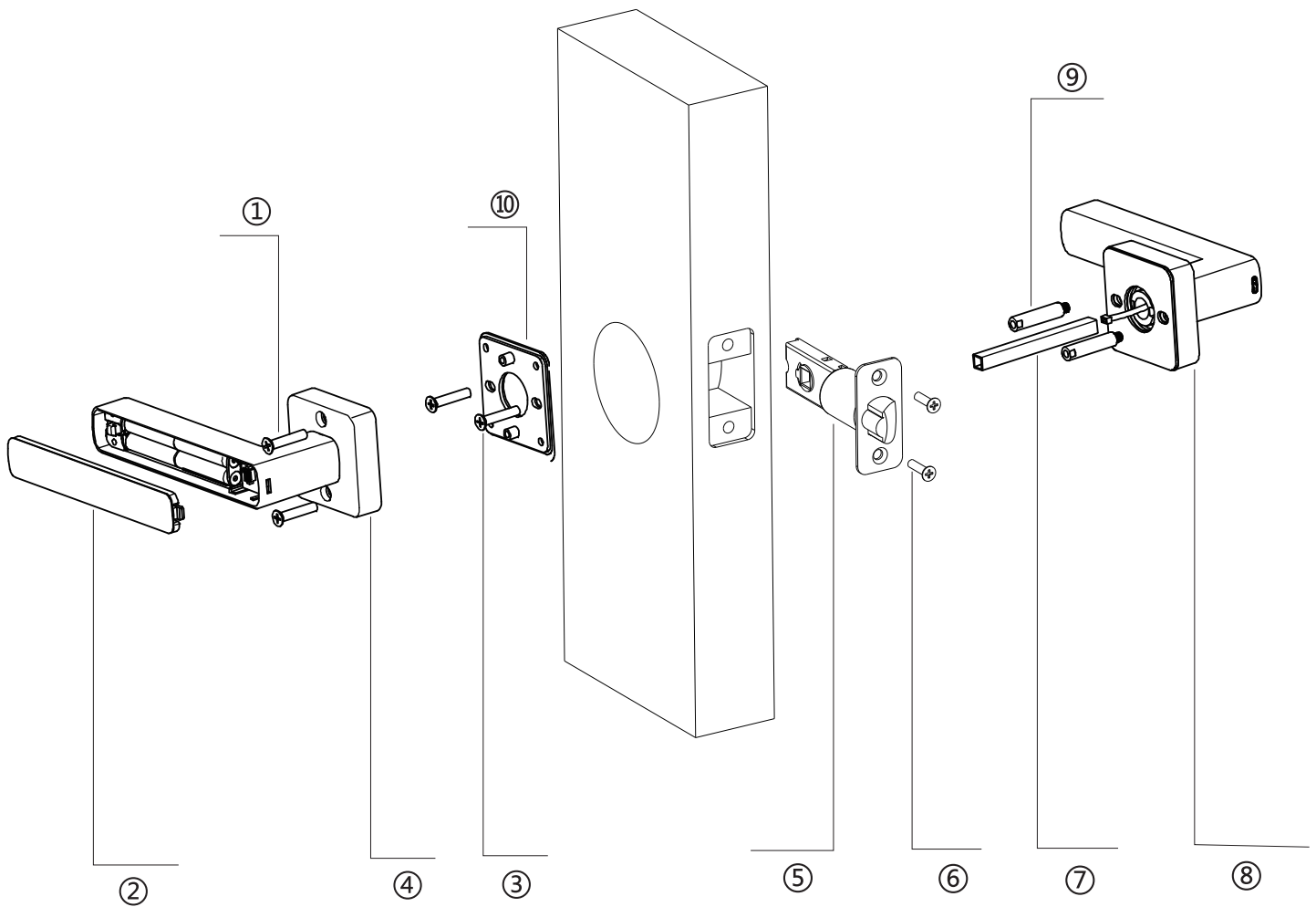
1.2 Product List

After unpacking, please check carefully according to the list, if you find any omissions, please ask us for it in time.

Ref	Name	Quantity
1	Outer boby	1
2	Inner boby	1
3	Key	2
4	Card	2
5	Accessory kit	1
6	Manual	1
7	Latch	1

2. INSTALLATION DIAGRAM AND STEPS

2.1 Product Installation Diagram



1.Handle set screw x2

2.Handle cover

3.Inner body fixing screw x2

4.Interior handle

5.Mortise

6.Mortise fixing screw x2

7.Square shaft

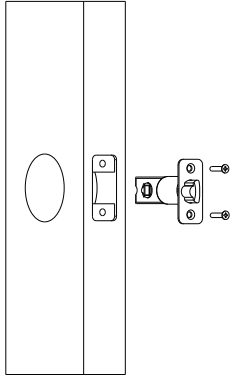
8.Exterior handle

9.Connection stud x2

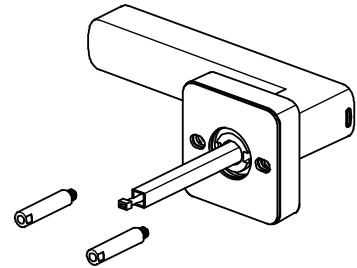
10.Rear sealing plate

2.2 INSTALLATION STEPS

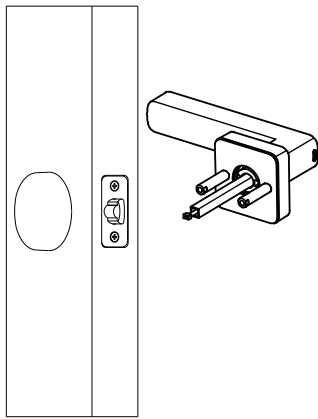
1. Put the lock body into the door hole and fix it with No. 6 screws (pay attention to the direction of the lock core, the slope of the lock tongue should be toward the outside of the door)



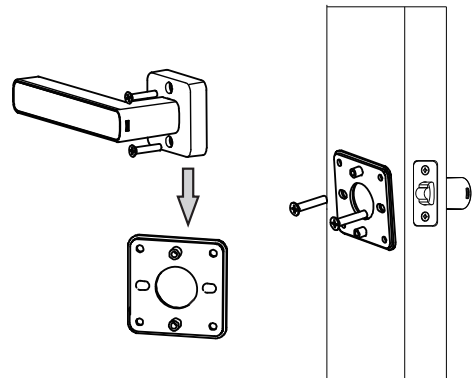
2. Install the No. 9 screw on the outer handle, pass the connecting wire into the square shaft, and fix the square shaft in the front lock slot.



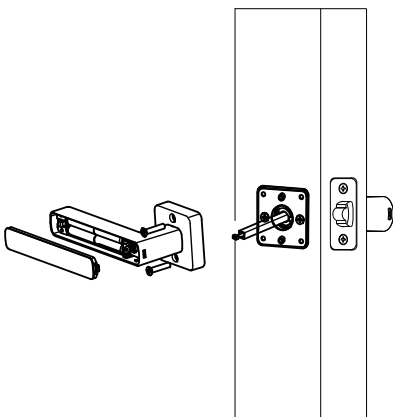
3. Pass the outer handle through the lock body and install it on the door.



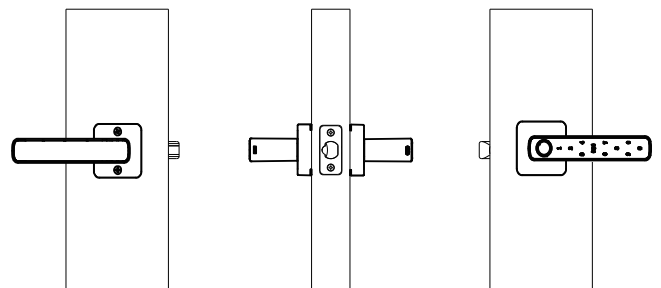
4. Install the inner handle sealing plate to the door and tighten it using the No. 3 screws.



5. Install the inner handle to the door and tighten it with No. 1 screw. (Before installing the inner handle, please open the battery cover and insert the connecting wire into the wire slot).



6. Please install 4 No. 7 dry batteries into the lock, close the battery cover, and the door lock installation is complete.



3. SMART LOCK PROGRAM SETTINGS AND ADDITIONS

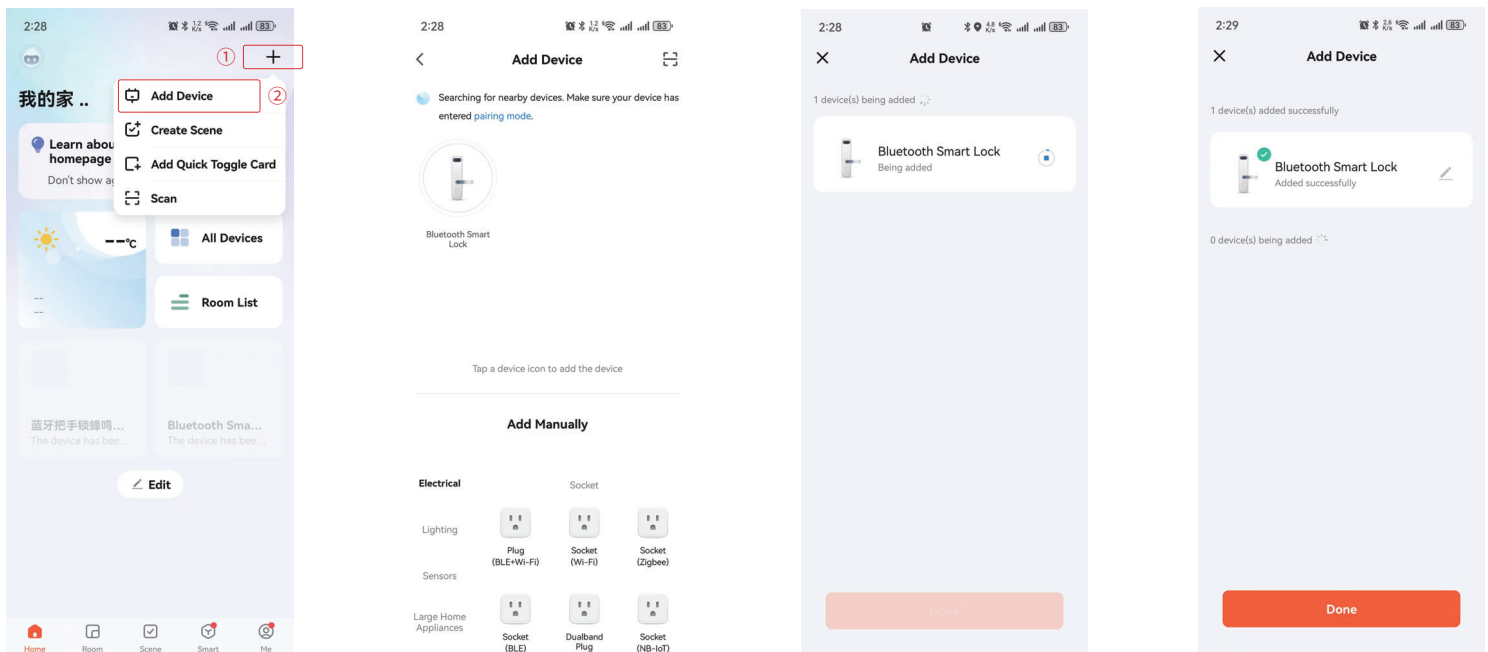
3.1 Add user (fingerprint/password/IC card)

Method 1 (recommended method): APP to add and set

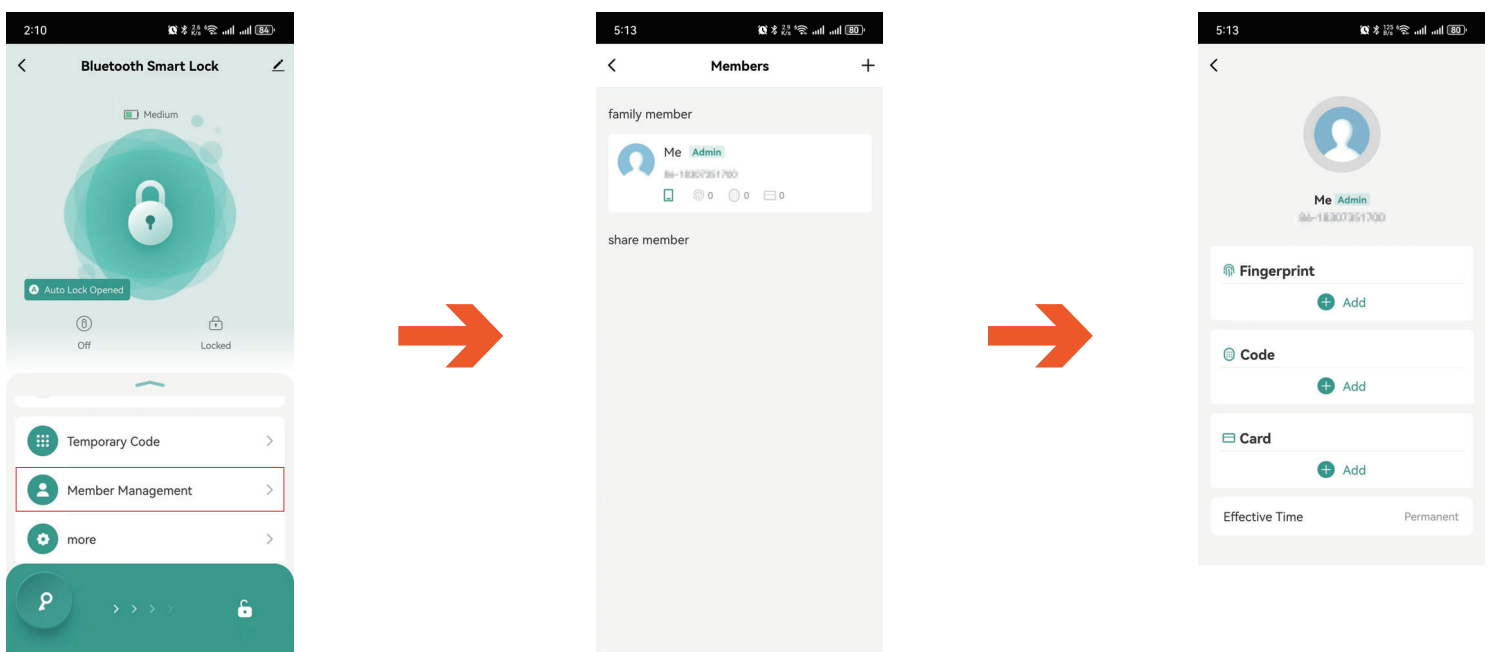
3.1.1 Download the "TUYA" APP and register. Turn on Bluetooth on your phone



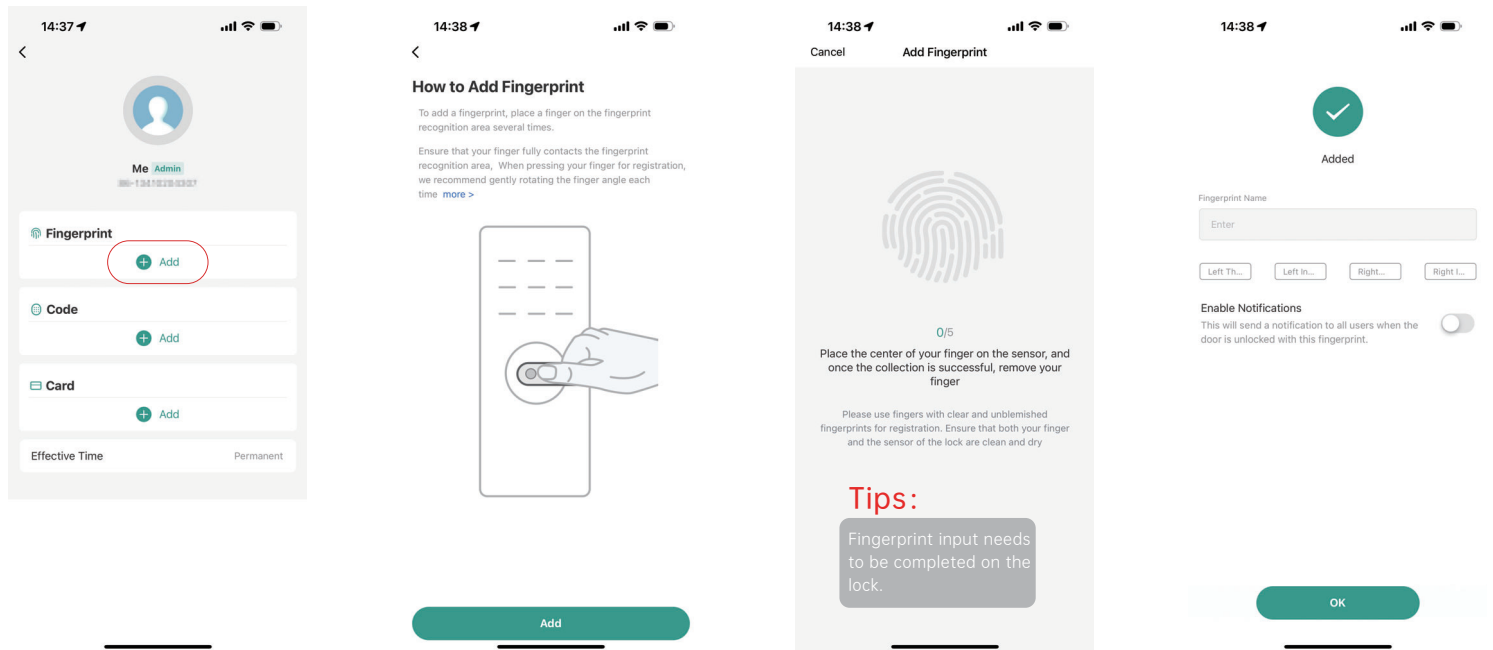
3.2.2 Open the app and you can see "Bluetooth smart lock", click the icon and add it



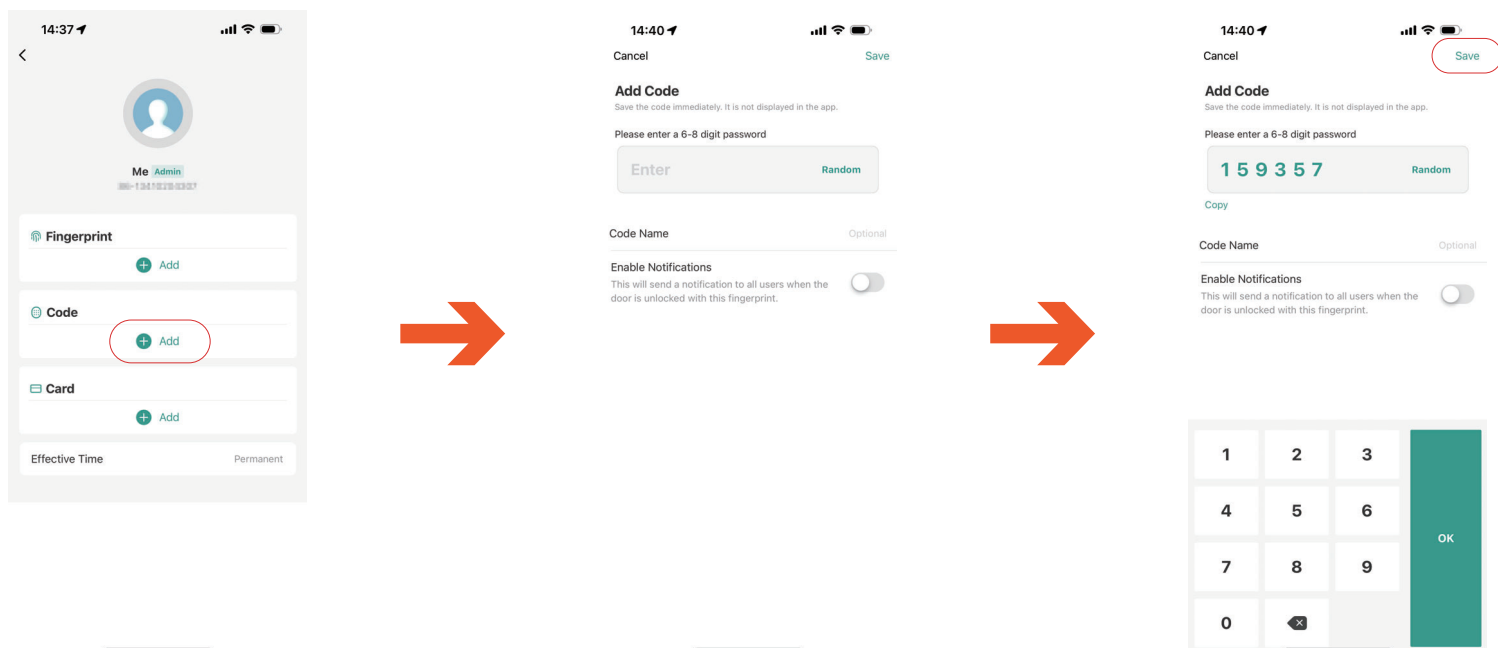
3.3.3 Enter-ME through "Member Management"



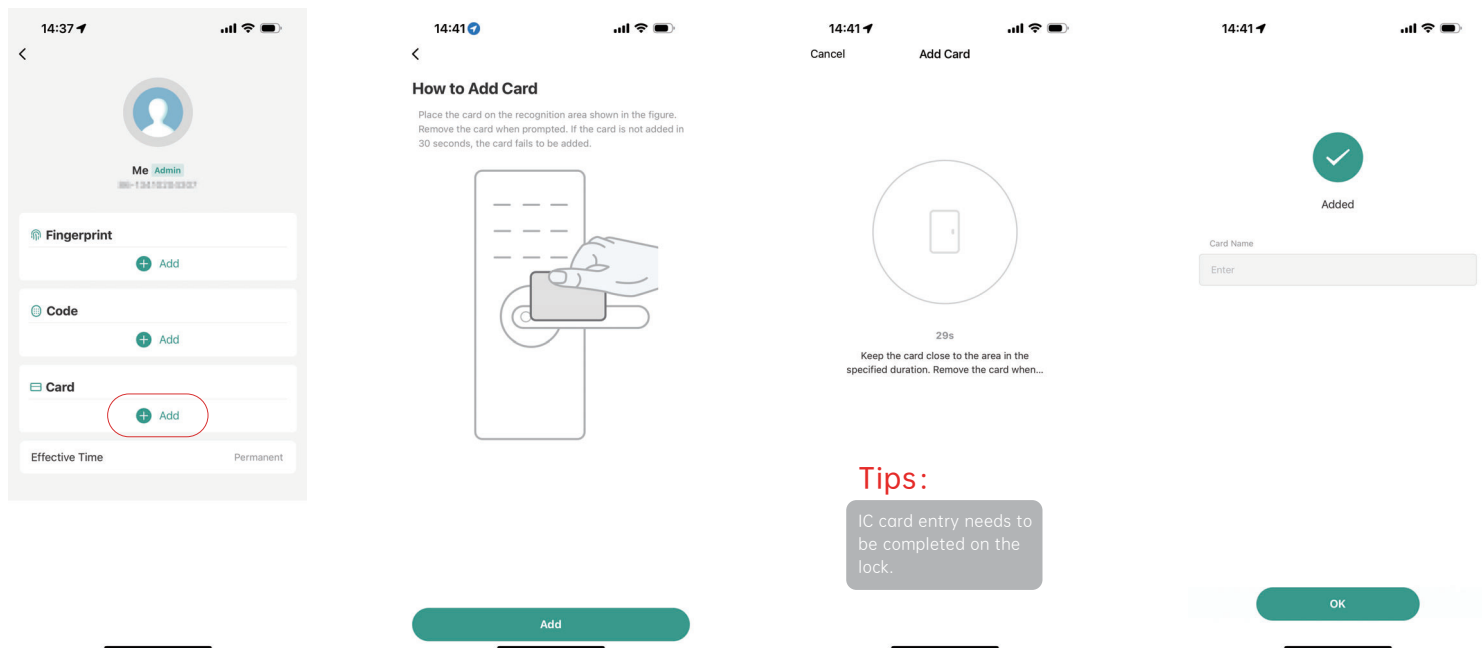
- ① Fingerprint adding (the same fingerprint needs to be identified 5 times at the smart lock fingerprint identification point, and the fingerprint lock will make a long "beep" sound to indicate that the setting is successful).



- ② Password (The valid length of a numeric password is 6-8 digits. If it exceeds this length, registration cannot be successful. Click save and the fingerprint lock will beep to set it successfully).



- ③ CARD addition (requires card recognition at the number 5 on the fingerprint lock, and a long beep from the fingerprint lock indicates successful setting).



3.2 Add user (fingerprint/password/IC card)

Method 2: Smart lock settings

3.2.1 Click "#" to activate the fingerprint lock numeric keypad

3.2.2 Enter the system with "1-0-#" and enter the 6-8 digit password # to confirm (repeat twice). The smart lock will emit a long "beep" to indicate that the setting is successful.

Tips: The effective length of the digital password is 6-8 characters. If it exceeds this length, the registration will fail.

3.2.3 Enter the system with "1-0-#", enter the password - # to confirm, enter the fingerprint (the same finger needs to be confirmed 5 times repeatedly), and the smart lock will emit a long "beep" to indicate that the setting is successful.

3.2.4 Enter the system with "1-0-#", enter the password -# to confirm, swipe the card (place the card close to the number 5 for identification), and the smart lock will emit a long "beep" to indicate that the setting is successful.

Tips: After successfully setting up the fingerprint lock, you need to add it to the "TUYA" APP. Please use "2-1-#" + "password". Turn on Bluetooth on your phone and open the "TUYA" APP to recognize the "Bluetooth Smart Lock" and add it.

3.3 Other common setting instructions

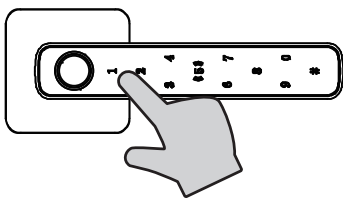
3.3.1 To activate the smart lock numeric keypad, press the "#" key

- 3.3.2 After setting the password and fingerprint on the smart lock, you need to add it to the "TUYA" APP. You can do "2-1-#" + "password", turn on Bluetooth on your phone, open the "TUYA" APP, and it will recognize the "Bluetooth smart lock" and add it.
- 3.3.3 "888-#-password" to reset the system and restore factory settings
- 3.3.4 Press and hold "0" to switch to silent mode; press and hold "0" again to switch to sound mode

4. HOW TO USE

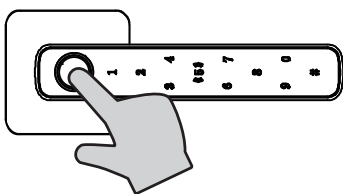
4.1 In Common Mode

4.1.1 Password Unlock



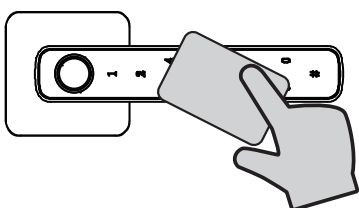
- Enter the added password, press # to confirm, password verification success.
- Press down the handle to unlock.

4.1.2 Fingerprint Unlock



- The enrolled fingerprint has been placed on the fingerprint sensor in the correct way, the fingerprint verification success and the indicator light up green.
- Press down the handle to unlock.

4.1.3 Swipe To Unlock

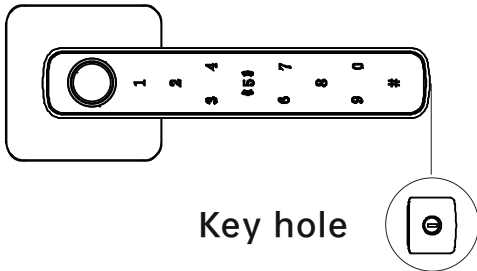


- Put the added proximity card close to or paste it on the keypad area, and the proximity card verification is successful and the indicator light up green.
- Press down the handle to unlock.

4.2 Emergency Unlock

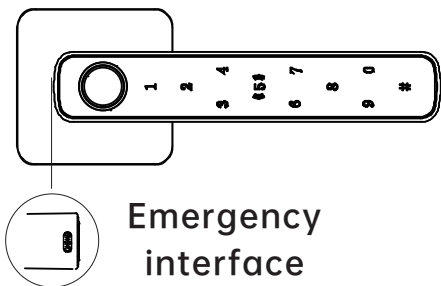
4.2.1 Mechanical Key Unlock

In case of emergency, such as forgetting the password, running out of battery power or system inoperability, a spare mechanical key can be used.



- a. The key hole is at the bottom of the handle.
- b. Insert the key into keyhole.
- c. Turn the key and press down handle to unlock.

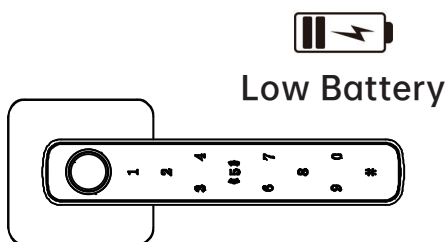
4.2.2 USB Emergency Power Supply



When the battery is exhausted and there is no key, you can connect an external power bank or 5V1A power supply for emergency, and open the door according to the normal operation steps. Please replace the battery in time after the emergency unlock.

⚠ Note: Do not mix different models, new and old batteries.

4.3 Battery Level Detection



When the voltage is below $4.3\text{V} \pm 0.2\text{V}$, the red indicator will continue to flash three times and can continue to unlock.

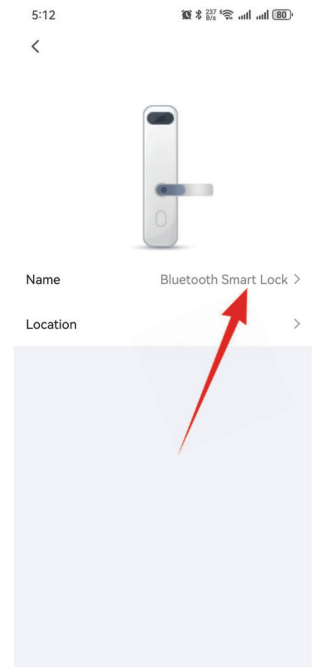
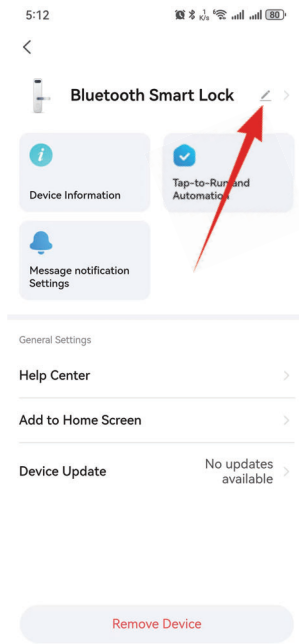
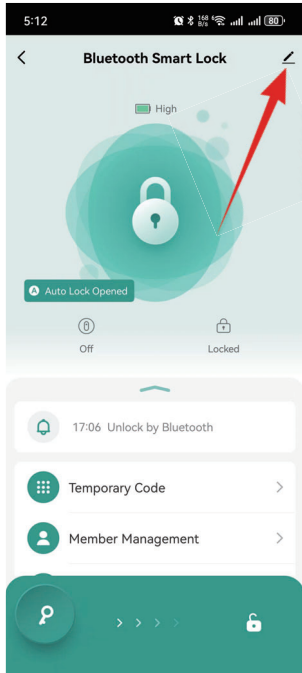
Attention please replace the battery.

5. BASIC PRODUCT PARAMETERS

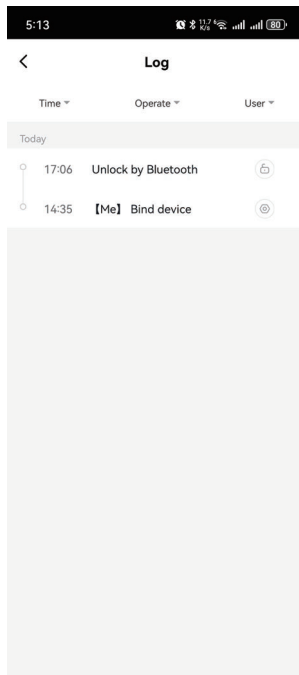
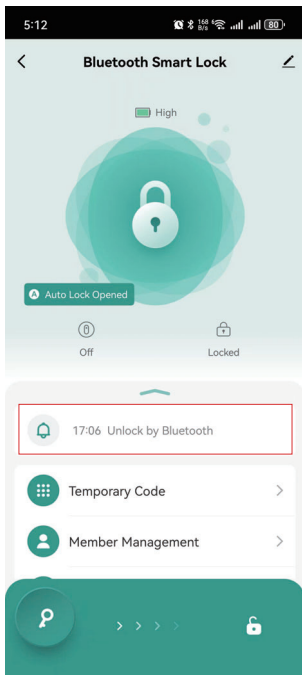
1. Open the lock way: fingerprint + password + card + key.
2. User Capacity: Fingerprint + Password + Ic Card, total capacity of 300 sets.
3 set for administrator password, 297 sets for regular users.
(Fingerprint: 100 Pieces, Ic Card: 100 Zhang, password: 100 Groups)
3. Fast sleep: Press the "#" button on any page to quickly exit the system and sleep.

6. "TUYA" APP FUNCTION INTRODUCTION

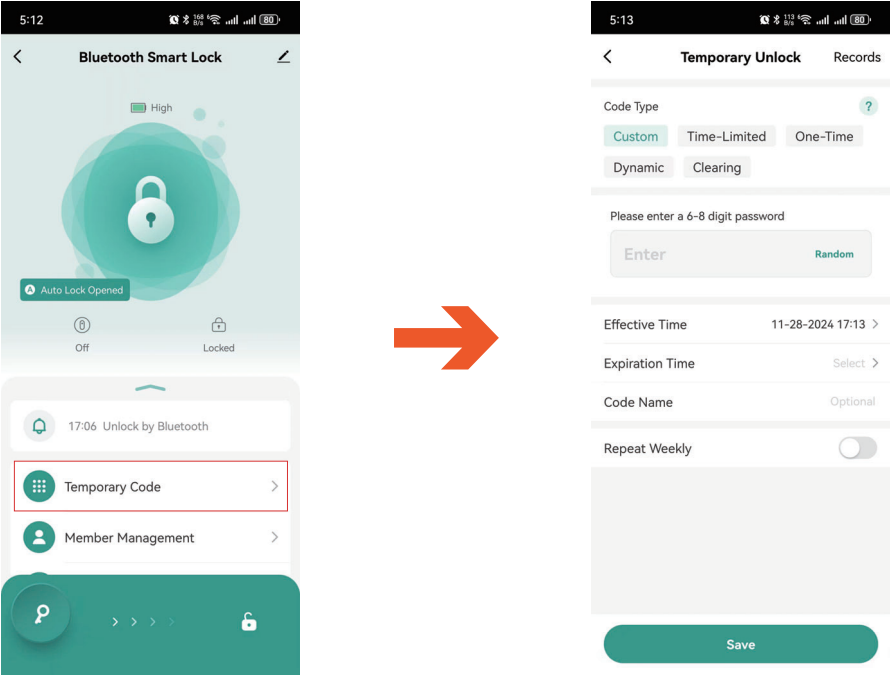
6.1 Custom edit name



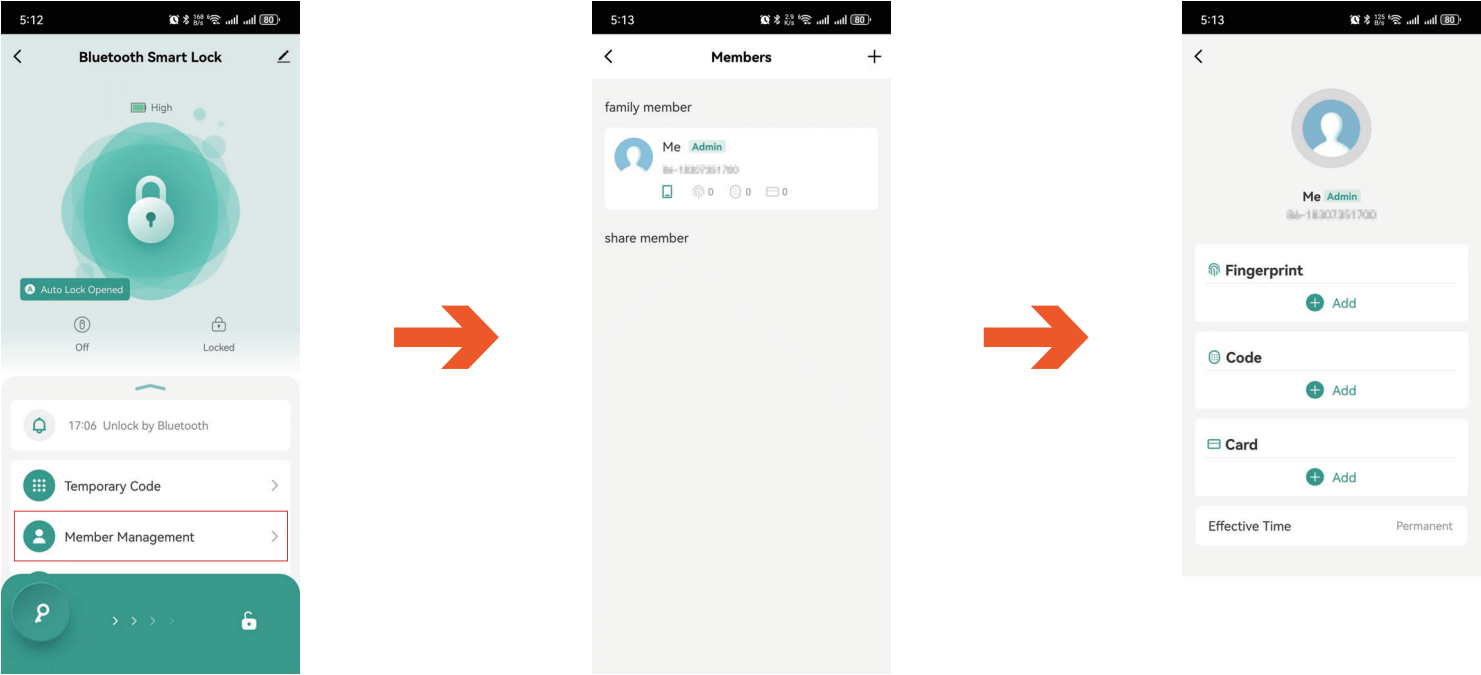
6.2 Unlock log



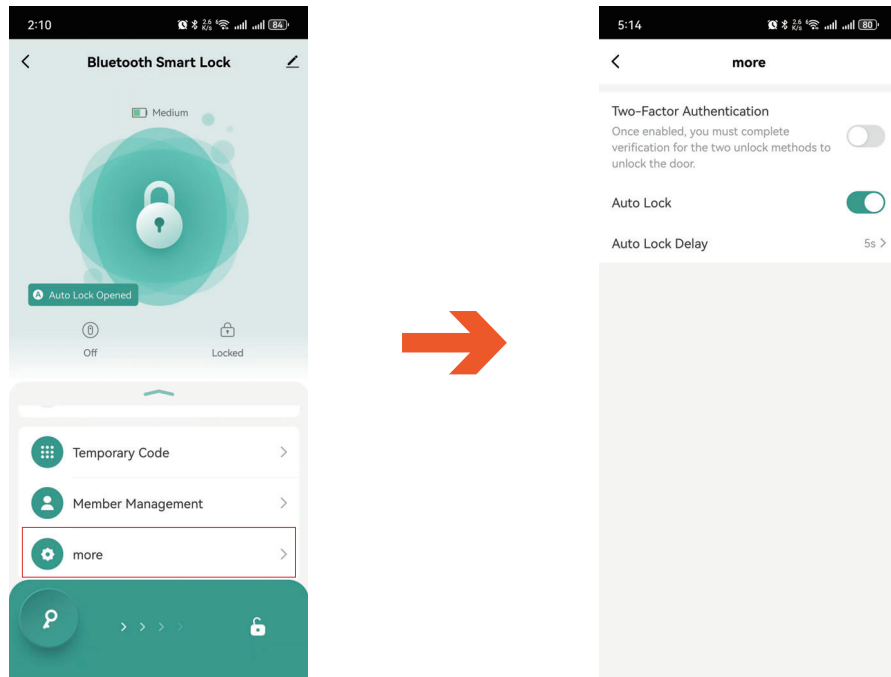
6.3 Temporary password setting



6.4 Member Management



6.5 More



7. SMART LOCK FAQs

7.1 What should I do if I encounter a problem with the settings and cannot be solved in time?

Please open the battery cover, press and hold the reset button next to the connection cable, restore the smart lock to factory settings, and then add the settings again.

7.2 What Is the USB Port Used For?

The USB port is intended for emergency by connecting a power bank when the batteries are dead. Please refrain from using it for battery charging or plugging in a direct electrical outlet as it could potentially damage the lock's internal components.

7.3 What Type of Battery Should I Use for this Smart Door Knob?

Please use four AAA alkaline batteries and avoid using rechargeable batteries.

7.4 Why can anyone unlock the smart lock?

The smart lock is initially set to unlock with any fingerprint and can be used by anyone. To ensure security, it is crucial to register the administrator fingerprint and password after installation to prevent unauthorized access.

7.5 How to Enhance Fingerprint Recognition Accuracy on Your Lock?

For best results, please enter the same fingerprint five times from various angles. This will allow for accurate fingerprint recognition and smooth access.

7.6 What App is Used with this Smart Fingerprint Door Lock?

The "Tuya" Smart app is used for this fingerprint door knob.

8. FCC WARNING

This device complies with part 15 of the FCC Rules. Operation is subject to the following two conditions:

- (1) this device may not cause harmful interference;
- (2) this device must accept any interference received, including interference that may cause undesired operation.

Any changes or modifications not expressly approved by the party responsible for compliance could void the user's authority to operate the equipment.

NOTE: This equipment has been tested and found to comply with the limits for a Class B digital device, pursuant to Part 15 of the FCC Rules. These limits are designed to provide reasonable protection against harmful interference in a residential installation. This equipment generates, uses and can radiate radio frequency energy and, if not installed and used in accordance with the instructions, may cause harmful interference to radio communications.

However, there is no guarantee that interference will not occur in a particular installation. If this equipment does cause harmful interference to radio or television reception,

which can be determined by turning the equipment off and on, the user is encouraged to try to correct the interference by one or more of the following measures:

- Reorient or relocate the receiving antenna.
- Increase the separation between the equipment and receiver.
- Connect the equipment into an outlet on a circuit different from that to which the receiver is connected.
- Consult the dealer or an experienced radio/TV technician for help.

The device has been evaluated to meet general RF exposure requirement. The device can be used in portable exposure condition without restriction.

SERVICE SUPPORT :

WeChat: 13410204307

WHATSAPP: +86 13410204307

E-Mail: fernyeserve@gmail.com