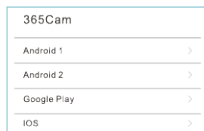


WiFi Camera Instruction Manual

Thank you for purchasing this product. Please read this manual carefully before use and keep it in a safe place.

Client Download

Scan the QR code below to download and install "365cam" APP, or search "365Cam" in your cell phone manufacturer's app store to download and install. (All permissions allowed)



Product button and indicator manual

Press and hold MODE/RESET for 5 seconds to restore factory settings and disconnect the connected network

The charging indicator (blue) is always on when charging, and turns off when fully charged

Work indicator (red) Flashing/constant light is the power-on state

Network indicator (red)

1.Slow flash, AP hotspot mode

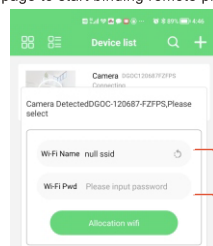
2.Long light, the device is connected to wifi successfully

3. Fast flash, device connection failed, WiFi password input error

Connection method one

1.Remote WIFI connection

1-1. Open "365cam" APP (allow to turn on Bluetooth) and click the page to start binding remote program

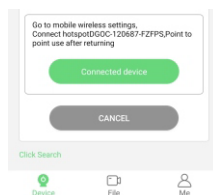


Select the name of your home WiFi
Enter the WiFi password (click Configure WiFi)

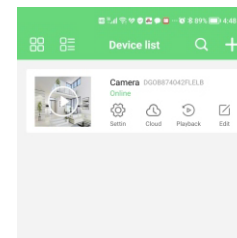
Connection method two

2. No network connection

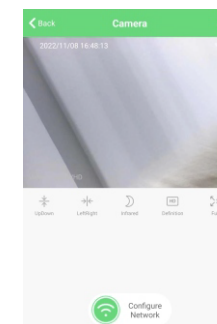
2-1 Mobile phone direct camera connection



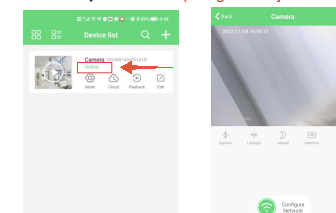
1-2. After configuring WiFi, the red light of the camera is always on to indicate successful connection to remote WiFi



2-2. Go to WiFi, Select the camera WiFi hotspot starting with "ABC" or "DG"click and connect.Connect (if a prompt pops up, please select Trust Network and keep the link)



2-3. After connecting the camera, return to the APP and refresh the page to show the device that the proximity mode is successfully connected. (Range is only within 10 meters)



FCC Warning Statement

Changes or modifications not expressly approved by the party responsible for compliance could void the user's authority to operate the equipment. This equipment has been tested and found to comply with the limits for a Class B digital device, pursuant to Part 15 of the FCC Rules. These limits are designed to provide reasonable protection against harmful interference in a residential installation. This equipment generates uses and can radiate radio frequency energy and, if not installed and used in accordance with the instructions, may cause harmful interference to radio communications. However, there is no guarantee that interference will not occur in a particular installation. If this equipment does cause harmful interference to radio or television reception, which can be determined by turning the equipment off and on, the user is encouraged to try to correct the interference by one or more of the following measures:

- Reorient or relocate the receiving antenna.
- Increase the separation between the equipment and receiver.
- Connect the equipment into an outlet on a circuit different from that to which the receiver is connected.
- Consult the dealer or an experienced radio/TV technician for help.

This device complies with part 15 of the FCC Rules. Operation is subject to the following two conditions:

(1) This device may not cause harmful interference, and
(2) this device must accept any interference received, including interference that may cause undesired operation.

RF Exposure Statement

To maintain compliance with FCC's RF Exposure guidelines, This equipment should be installed and operated with minimum distance of 20cm the radiator your body. This device and its antenna(s) must not be co-located or operation in conjunction with any other antenna or transmitter.