

Four-record driving recorder

D65



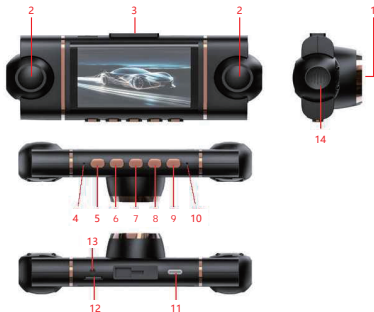
Instructions for use

Please read the instruction manual carefully before using this product.

The instruction manual is for reference only, and the specific operation shall be subject to the physical object.

1. Product structure

Description of product



(1)Front camera (2)Left and right cameras (3)Bracket (4)Reset hole (5)Confirm button
(6)Left button (7)Right button (8) Mode/Menu button (9) Power button (10)Microphone
(11)Charging port (12)TF card slot (13)Rear view camera interface (14)Lens

2. Introduction to key and interface functions

1. Power button

1) Press and hold for 2 seconds to turn on/off;
Click the repressible screen in the power-on state, and then click the bright screen again.

Two. OK key

1. Confirmation key;

2. Click to record, take photos, play or pause.

3. Upper key

1) Choose upwards;

2) Long press in photo/video mode to turn on/off the infrared light

4. Lower key

1) Downward selection;

2) Click/long press in photo and video mode to switch each lens picture;

5. Mode/Menu key

1) Long press to switch the video/photo/playback mode;

2) Click to call up the setting menu;

3)Click while recording to lock the current recorded video.

6.Reset hole

When the machine has a flower screen, abnormal shutdown, etc., poke it with a pinhole-like thing to force the shutdown.

7.Pull back interface

It is used to connect the external rearview mirror input interface;

8.Charging interface

1Interface type:Type-C;

2It is used to connect an external power supply to charge the battery or provide working power;

3) Used to connect PCThe terminal can perform 'mory/camera' operation.

3. Basic operating instructions

1)Power-on and shutdown

Long press'Power button'2 seconds to turn on or off the device;It will automatically record video when it is turned on with a memory card.

Two. Video mode

1)Long press in the shutdown state'Power button'Turn on the device and enter the video recording mode.;

2)Click the 'OK button' to record the video, and click again to stop the recording and save it automatically;

3)Click the 'Mode/Menu Key' when recording to lock the video being recorded;

4)Click the 'down button' to switch the camera screen;

5)Long press the 'up key' to turn on/off the infrared light;

6)Long press 'Mode/Menu Key' to switch mode; click to adjust the submenu and system settings menu;

7)Click the 'Power Key' to turn off the screen, and click again to turn on the screen.

3.Photo mode

1)Long press the shutdown status'Power button'Turn on the device (click the 'OK key' to stop recording when the card is turned on), and long press the 'mode/menu key' once to enter the photo mode.;

2)Click the 'OK key' to take photos;

3)Click the 'down key' to switch the camera picture;

4)) Long press the 'up key' to turn on/off the infrared light;

5)Long press the 'mode/menu key' to switch the mode; click the adjustable submenu and system settings menu;

6)Click the 'Power Key' to turn off the screen, and click again to turn on the screen.

4.Replay mode

1)Long press the shutdown status'Power button'Turn on the device (click the 'OK key' to stop recording when the card is turned on), and long press the 'mode/menu key' twice to enter the playback mode.;

2)Click the 'up/down key' to switch files; click to increase or decrease the volume when playing video files;

3)Click the 'OK key' to view the video file to play or pause;

4)Long press the 'Mode/Menu Key' to switch the mode; click to adjust the submenu and system settings menu.

5)Click the 'Power Key' to turn off the screen, and click again to turn on the screen.

Note: In the video/photo/playback mode, it is forbidden to unplug and insert the card!

5.USB mode

The device uses USB data to connect to the computer. After the device is automatically turned on, the screen displays two options 'memory/camera' (Note: pulling after connection will not enter this mode):

Memory:In this mode, video files or photo files can be accessed.And check;

Camera:In this mode, you can't is used for computer cameras;

IV.ProductParameters andSpecifications

3、 Wi-Fi Connection And APP Control

1.Download Viidure APP

1) Method 1:Scan the QR code below to download Viidure APP



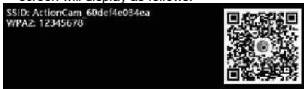
<https://www.6zhentan.com/app/d0001/index.html>

2) Method 2:You can search for "Viidure" in the Android App Store or the iOS App Store and download it.

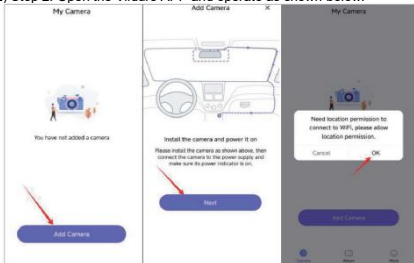


2. Connect to the dash cam

1) Step 1: Enter the video recording mode of the dash cam, then press the ▲ UP button, the dash cam will automatically enter the following wifi connection mode. The dash cam screen will display as follows:



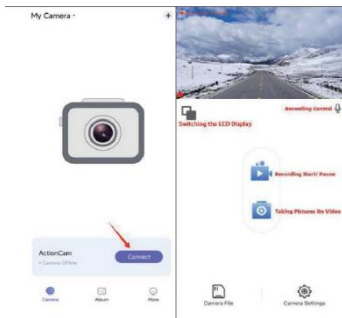
2) Step 2: Open the Viidure APP and operate as shown below:



- 3) Step 3: Enter the WIFI connection page of the mobile phone, find the WIFI SSID corresponding to the driving recorder, and enter the WiFi password: 12345678 to complete the WIFI connection.



- 4) Step 4: Return to the Viidure APP, where you can view recorded videos and set up the dashcam.



3.View recorded videos

- 1) Operation step: Click "Camera File" below to view the recorded video.
- 2) Note: The video played on the mobile phone is compressed. If you want to watch the original high-definition video, please download it to the mobile phone to play.



4. Download videos

- 1) Operation step: Select the video you need and select the "Download" icon at the bottom of the screen to download the video
- 2) Note: After the video is downloaded to your phone, if you need, you can share it with your friends or social media, or collect evidence to protect your safety and rights.



5. Set up the dashcam through the APP

1) Click "Camera Settings" on the bottom right of the page to set up



2) Specific setting parameters are as follows:

Earnings Settings		
Photo Resolution		White Balance
Video Resolution	4K	Motion Detection
Loop Recording Duration		Automatic Screen Off Time
Light Source Frequency WDR	50Hz	Time Format Wjmm.'OO>
Time Watermark Delay Off Time White Exposure Control White Balance		WiFi Name, -KonCai- WiFi Password, Firmware Version. "ziOSgv?] Format SD Card

6. Return to key operation

If the dashcam screen shows the following situation (WiFi connection prompt), and you want to restore to the recorder recording screen, you close the Viidure APP and press the ▲ up button of the dashcam at the same time, and wait for 3 seconds to restore.



7. Technical Support

If you encounter any problems in connecting the APP and the dashcam, you can contact our technical team through the email below. Our technicians will help you solve the problem as soon as possible.

FCC Caution.

This device complies with part 15 of the FCC Rules. Operation is subject to the following two conditions:

- (1) This device may not cause harmful interference, and
- (2) this device must accept any interference received, including interference that may cause undesired operation.

Any Changes or modifications not expressly approved by the party responsible for compliance could void the user's authority to operate the equipment.

Note: This equipment has been tested and found to comply with the limits for a Class B digital device, pursuant to part 15 of the FCC Rules. These limits are designed to provide reasonable protection against harmful interference in a residential installation. This equipment generates uses and can radiate radio frequency energy and, if not installed and used in accordance with the instructions, may cause harmful interference to radio communications. However, there is no guarantee that interference will not occur in a particular installation. If this equipment does cause harmful interference to radio or television reception, which can be determined by turning the equipment off and on, the user is encouraged to try to correct the interference by one or more of the following measures:

- Reorient or relocate the receiving antenna.
- Increase the separation between the equipment and receiver.
- Connect the equipment into an outlet on a circuit different from that to which the receiver is connected.
- Consult the dealer or an experienced radio/TV technician for help.

*RF warning for Mobile device:

This equipment complies with FCC radiation exposure limits set forth for an uncontrolled environment. This equipment should be installed and operated with minimum distance 20cm between the radiator & your body.