

UHD 4K Dashcam user manual

C18



Thank you for purchasing the appearance of fine high-resolution multi-function onboard recorder. This product uses high-performance chips, High-definition video, dynamic picture of the continuity of strong, under low light, can record video, To achieve high-definition wide-angle shot. This user manual details how to use, and provide you with detailed information, including the use, Operational and technical specifications, please read the manual carefully and fully understood before using, please keep this manual Book, we hope that this product will meet your needs and long-term service to you!

Product manual

Introduction to main functions of mobile app

1. Download app

App loading can be performed in two ways:

1) Go to the app store to download

For IOS system, you can search "Viidure" in the app store to download:



2) Scan the QR code for IOS and Android systems, which can be downloaded by scanning the QR code "Viidure" APP. The steps are as follows:

1) Open the software with "scan" function to scan

2) Select the corresponding system of the mobile phone and click to download



2. Registered account

1) Enter the "Viidure" app for account registration

2) Fill in the corresponding information as required, obtain the verification code and fill in it. Click registration to complete the operation

3.Connecting the camera

1) Enter the mobile phone wifi list (as shown in the figure below), click "FHCam-*****" to enter the recorder device name, enter the password "12345678", and the mobile phone is successfully connected to the recorder;

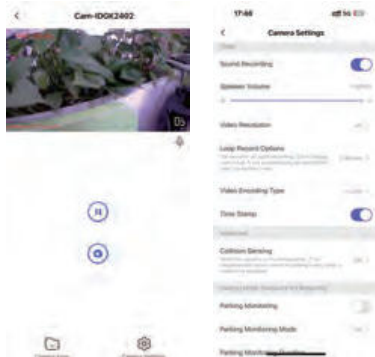


2) Log in to the downloaded app, "Viidure" enters the main interface, click the camera icon above "FHCam-*****" to enter the recorder screen;

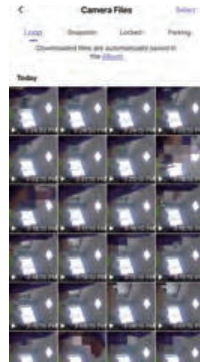


4. Parameter setting

Set the parameters of the dash cam, such as modifying the WiFi password, recording or not, and displaying the watermark time, Video cycle time, collision sensitivity, video resolution, etc.



5. video review and download



Key function description

Please note that this product must be connected to a power source to turn on and function.



1.Power button 2 . TF card slot 3 . Rear lens interface 4.Power interface

When the device is powered on and operating normally, press and hold the power button for 3 seconds to turn it off.

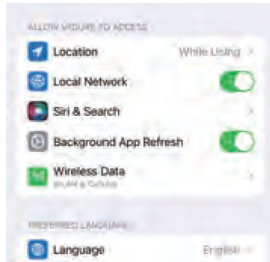
When the device is powered on but turned off, press and hold the power button for 3 seconds to turn it on.

2. Please note the insertion direction when inserting the TF card. Please use a TF card with a capacity ranging from 8G to 128G.
3. For the rear lens interface, ensure that the rear lens plug is fully inserted.
4. Insert the power cord into the interface.

Troubleshooting:

Under normal operating conditions, if the products have problems, please refer to the solution:

1. Could not take photos, video Check TF card whether there is enough space, whether locked.
2. When recording, it will automatically stop Because of huge high-definition video data, use SDHC compatible high-speed TF card, high-speed TF card will be C10 identity.
3. Replay pictures and videos, the "File" prompt An error occurred when TF card memory data, resulting in incomplete files, use the Car DVR "Format" function, reformat the card.
4. The image is foggy
Please check the lens for dirt and finger prints. Before shooting, wipe the lens with lens paper.
5. Open the network access permission for the first time, and open the local photo album
6. If the mobile phone cannot be connected to the product, first of all, check whether the mobile phone is connected to other WiFi hotspots. The app can only be connected to the recorder when the WiFi in the mobile phone settings is connected to the recorder (for example, at home, it is found that the recorder cannot be connected, so it is necessary to check whether the WiFi signal in the mobile phone settings is connected to the WiFi in the home)



7. The real-time picture of the mobile phone is stuck, which is generally related to the WiFi signal. For example, when the mobile phone is too far away from the recorder, the WiFi signal is weak, and the real-time picture of the mobile phone will get stuck. In addition, if there are too many WiFi signals around the recorder, it will also interfere with the recorder and cause the real-time picture to jam

8. The preview speed in the album is very slow. It may be that there are too many video files in the TF card, resulting in the timeout of obtaining file information.

Consumers are advised to format TF cards regularly

9. record appearance many clients connect to it. But only one mobile phone can be used to link at the same time. If it is found that the mobile phone cannot be connected to the recorder, it should be ruled out whether the recorder is connected to other mobile phones

10. Use the computer to play video recordings:

The product uses H.264 compression format The file type is mov or MP4 format. Many Microsoft Windows computers' built-in playback software bodies (such as Windows Media Player) do not support H.264 encoding format It may not be able to play, or the playing of the movie is not smooth, the frame is fixed or broken, or the video and audio are not synchronized. It is recommended to download other professional playing software (such as potplayer, etc.).

FCC Caution.

This device complies with part 15 of the FCC Rules. Operation is subject to the following two conditions:

- (1) This device may not cause harmful interference, and
- (2) this device must accept any interference received, including interference that may cause undesired operation.

Any Changes or modifications not expressly approved by the party responsible for compliance could void the user's authority to operate the equipment.

Note: This equipment has been tested and found to comply with the limits for a Class B digital device, pursuant to part 15 of the FCC Rules. These limits are designed to provide reasonable protection against harmful interference in a residential installation. This equipment generates uses and can radiate radio frequency energy and, if not installed and used in accordance with the instructions, may cause harmful interference to radio communications. However, there is no guarantee that interference will not occur in a particular installation. If this equipment does cause harmful interference to radio or television reception, which can be determined by turning the equipment off and on, the user is encouraged to try to correct the interference by one or more of the following measures:

- Reorient or relocate the receiving antenna.
- Increase the separation between the equipment and receiver.
- Connect the equipment into an outlet on a circuit different from that to which the receiver is connected.
- Consult the dealer or an experienced radio/TV technician for help.

*RF warning for Mobile device:

This equipment complies with FCC radiation exposure limits set forth for an uncontrolled environment. This equipment should be installed and operated with minimum distance 20cm between the radiator & your body.