



C17

User Manual

Exclusive 4K UHD Front and Rear Dual Cameras

Before using this product, read the operating instructions carefully. The instructions are for reference only; specific operation shall be subject to the actual product.

HD Dash Cam

This product adopts a high-performance chip, providing high-definition videos and seamless dynamic images. It has passed the strict certifications of CE (Europe) and FCC (United States). Please read this manual carefully before use and keep it properly. We hope this product can meet your needs and serve you for a long time!

1.Description of Appearance and Button Functions

1.1 Button Position and Definition



1.Power Button / OK Button

2.Up Button

3.Down Button

4.Menu Button

5.Type-C Interface

6.Rear Camera Interface

7.Front Recording Camera

8.TF Card Slot

1.2 Button Functions and Operation Instructions

1.2.1 Power Button

- Function 1: Power On/Off

In the power-off state, press and hold the "Power Button" for 2 seconds to turn on the device, and the device will start working automatically.

In the power-on state, press and hold the "Power Button" for 2 seconds, and the device will automatically save the video files and user settings and then shut down.

- Function 2: Confirmation and Selection

In standby/recording mode, press the "Power Button" to start/stop recording. In system settings, file management, and playback mode, it can be used to confirm and select functions.

1.2.2 Up Button

- Function 1: In the playback interface, short-press to switch video files.
- Function 2: In the video preview screen, short-press to switch the front and rear recording windows.
- Function 3: In the system settings interface, short-press to switch settings.
- Function 4: Press and hold to turn WiFi on or off.

1.2.3 Down Button

- Function 1: In the playback interface, short-press to switch video files.

- Function 2: In the video preview screen, short-press to turn audio recording on or off.
- Function 3: In the system settings interface, short-press to switch settings.
- Function 4: Press and hold to fine-tune the vertical angle of the lens.

1.2.4 Menu Button

- Function 1: Short-press to enter/exit system settings.
- Function 2: Press and hold to enter file management.
- Function 3: In file management mode, short-press to return to the previous directory.

2. Product Specifications and Function Introduction

2.1、 Product Specifications

No.	Item	Specification
1	Display Screen	3.2-inch IPS
2	Front Lens	170° (4K)
3	Rear Lens	140° (1080P)
4	WiFi	Yes
5	Operation Method	Buttons + APP
6	GPS	Optional
7	Body Material	ABS
8	Video Frame Rate	30 FPS
9	Video Resolution	3840*2160 + 2560*1600

10	Microphone / Speaker	Built-in
11	Power Supply Method	Cigarette Lighter DC12V/2A
12	Battery Capacity	150 mAh
13	Memory Card	Supports up to 256 GB (Class 10 or higher)
14	Operating Temperature	-20 °C to 55 °C
15	Operating Humidity	10% RH to 85% RH
16	Product Size	89*35*36 mm
17	Product and Accessory List	Main Unit / Car Charger / Bracket / Rear Lens / Rear Lens Connection Cable / Manual / Color Box

2.2、Introduction to System Function Menu

No.	Function	Options
1	Resolution	4K, 2K
2	Loop Recording	1 Minute, 2 Minutes, 3 Minutes
3	Time-Lapse Monitoring	Off, 1 Second, 2 Seconds, 3 Seconds
4	Time-Lapse Recording Duration	Off, 12 Hours, 24 Hours, 48 Hours
5	Recording Audio	Off, On
6	Collision Sensitivity	Off, Low, Medium, High
7	Parking Mode	Off, Low, Medium, High
8	Time Stamp	Off, On

9	Rear Camera Mirroring	Off, Preview Mirroring, Recording Mirroring, Full Mirroring
10	License Plate Number	Off, On
11	Screen Sleep	Off, 10 Seconds, 30 Seconds, 60 Seconds
12	Button Sound	Off, On
13	Speaker Volume	Off, Low, Medium, High
14	Power On/Off Sound	Off, On
15	Language	English, Simplified Chinese, Traditional Chinese, Japanese, Russian, Thai, Vietnamese
16	Time Setting	Year, Month, Day, Hour, Minute, Second
17	Daylight Saving Time	Off, On
18	Mobile App Connection	Off, On
19	Format Memory Card	Confirm, Cancel
20	Restore Factory Settings	Confirm, Cancel
21	About	Product Software Version

3、Installation Precautions

3.1. Please test the normal operation of the rear-view camera first before installation (if there is a rear-view camera; ignore this if there is none);

3.2.Turn off the car engine;

3.3.Insert the TF card into the dash cam's card slot. [Note] Please use a high-speed TF card (Class 10 or above), with a capacity of not less than 4 GB and not more than 256 GB. For details, refer to the specifications;

3.4.Fix the dash cam on the car's front windshield through the bracket;

3.5.Insert the car charger into the car's cigarette lighter socket;

[Note] When routing the cable, the extended charging cable can be laid along the edge of the car door frame and under the car carpet;

3.6.Install the rear camera at the rear of the vehicle, and pay attention to the up and down direction during installation. The cable can be laid along the top edge of the vehicle.

[Note] There are two installation methods for the rear camera:

A. Attach it to the top of the car's rear glass, which can be installed by yourself (the reverse viewing function cannot be realized, only real-time video recording of the rear of the car is available);

B. Ask professional installers to install it above the license plate frame, and at the same time, the camera needs to be connected to the reverse light power supply (the reverse viewing function can be realized).

3.7.Adjust the position of the lens to set the camera angle to the best shooting perspective;

3.8.Start the engine and check if the device is working normally.

4、 Frequently Asked Questions

Problem	Solution
The device shows the prompt "File Error"	Go to Settings Menu -> Restore Factory Settings and format the memory card. This problem is usually related to the TF card.
Horizontal stripe interference appears on the screen	Please select the correct power supply frequency of 50HZ (PAL).
How to correctly enable the 24-hour parking monitoring function	Do not enable it during normal driving, as it may easily cause automatic shutdown or crash. It only needs to be enabled after parking. Please configure a step-down cable or a mobile power supply.
The image captured at night is not clear enough	The dash cam relies on strong external light sources (such as street lights and car lights) for shooting, which is common in the industry.
The device always reverts to the default date and time	Charge the device fully when it is turned off. You can use a car charger or a mobile power supply to recharge it.
What causes missing seconds in video files	(Please turn off the motion detection recording / turn on the loop recording function). For self-prepared memory cards, be sure to use genuine C10 high-speed cards.
Why does the device shut down automatically suddenly during recording	Please turn off the parking monitoring function first / automatic shutdown may also occur if the temperature of the use environment exceeds 70°C.

[Note] Practice has proved that most problems are related to the memory card, and a small number are related to the power cable.

The information provided in this dash cam manual is for reference only. Users should refer to the actual sample machine during use. Our company shall not bear any responsibility for fines or traffic accidents caused by the use of this product.

Attention:

This feature is only available on devices with Wi-Fi functionality. Please ignore the following content if there are devices without Wi-Fi capability.

5、 Wi-Fi Connection And APP Control

5.1、 Download Viidure APP

1) Method 1: Scan the QR code below to download Viidure APP;

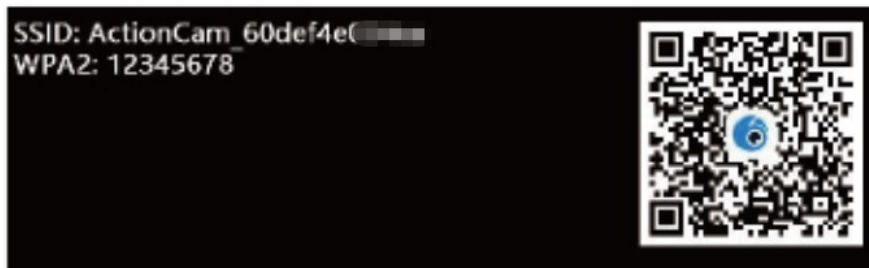


2) Method 2: You can search for "Viidure" in the Android App Store or the iOS App Store and download it.

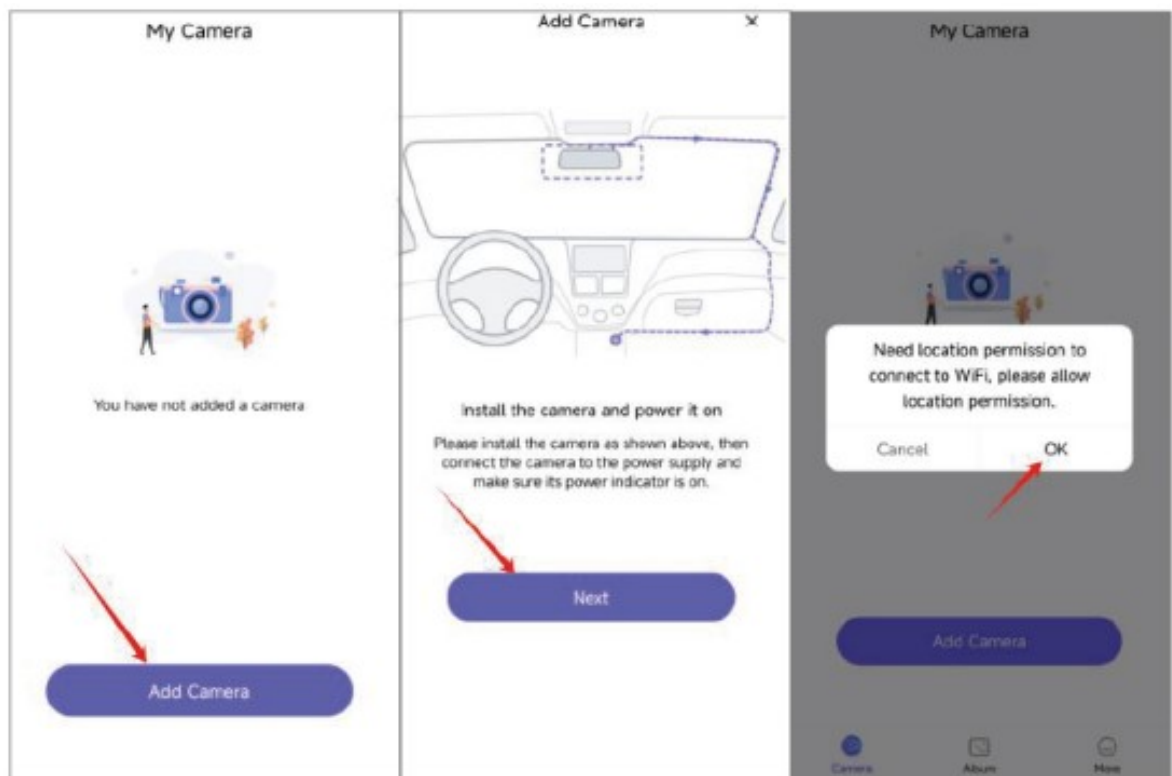


5.2、 Connect to the dash cam

1) Step 1: Enter the video recording mode of the dash cam, then press the ▲ UP button, the dash cam will automatically enter the following WiFi connection mode. The dash cam screen will display as follows:



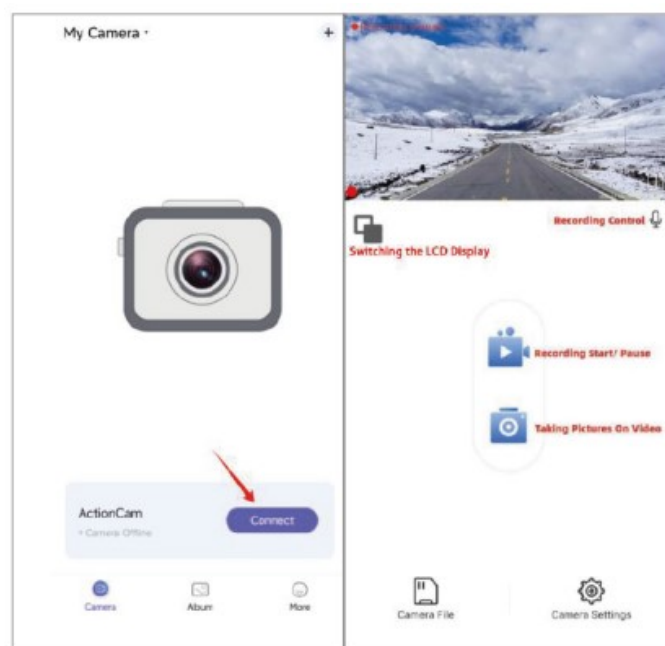
2) Step 2: Open the Viidure APP and operate as shown below:



3) Step 3: Enter the WiFi connection page of the mobile phone, find the WiFi **SSID** corresponding to the driving recorder, and enter the WiFi **password: 12345678** to complete the WiFi connection.



4) Step 4: Return to the Viidure APP, where you can view recorded videos and set up the dash cam.



5.3、 View recorded videos

1) Operation step: Click "Camera File" below to view the recorded video.

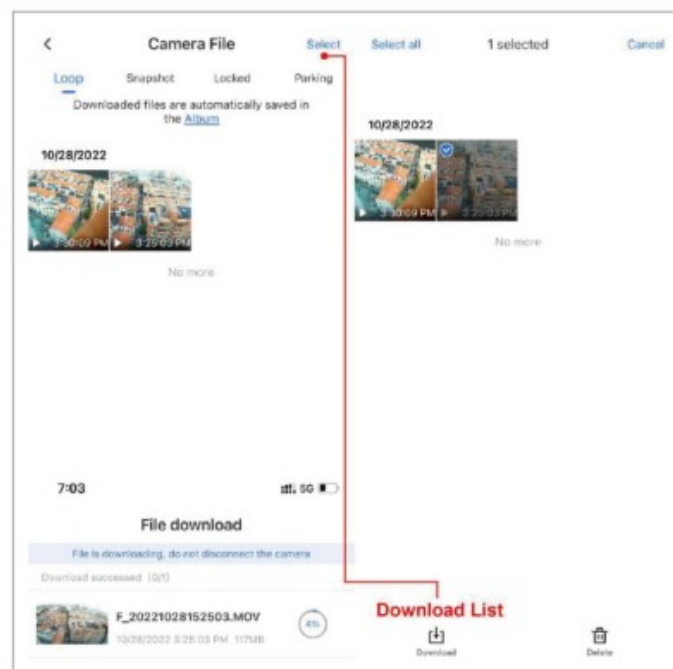
Note: The video played on the mobile phone is compressed. If you want to watch the original high-definition video, please download it to the mobile phone to play.



5.4、 Download videos

1) Operation step: Select the video you need and select the "Download" icon at the bottom of the screen to download the video.

2) Note: After the video is downloaded to your phone,if you need,you can share it with your friends or social media, or collect evidence to protect your safety and rights.



5.5、 Set up the dash cam through the APP

1) Click "Camera Settings" on the bottom right of the page to set up.

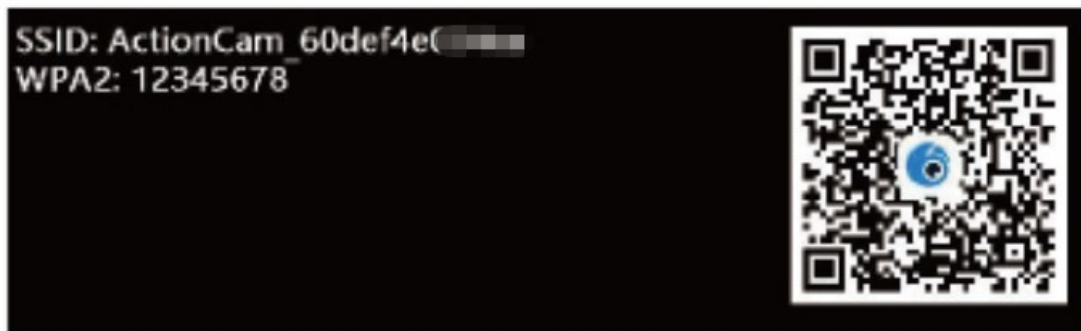


2) Specific setting parameters are as follows:

Camera Settings	
Video	Image
Sound Recording	Photo Exposure Compensation 0 >
Photo Resolution 12M >	White Balance Auto >
Video Resolution 4K >	Advanced
Loop Recording Duration The duration of each recording. If the memory card is full, it will automatically be overwritten from the earliest video. 3 Minutes >	Motion Detection
Light Source Frequency 50 Hz >	Automatic Screen Off Time The time is up to turn off the screen to avoid affecting driving, and the video will continue to be recorded and stored. Off >
WDR	Time Format YY/MM/DD >
Time Watermark	Universal
Delay Off Time Off >	WiFi Name ActionCam >
Image	WiFi Password You will need to change WiFi password in phone settings. >
Photo Exposure Compensation 0 >	Firmware Version 20240509 V2.4
White Balance Auto >	Format SD Card >
	Factory Reset >

5.6、 Return to key operation

If the dash cam screen shows the following situation(WiFi connection prompt), and you want to restore to the recorder recording screen,you close the Viidure APP and press the up button of the dash cam at the same time, and wait for 3seconds to restore.



FCC Caution.

This device complies with part 15 of the FCC Rules. Operation is subject to the following two conditions:

- (1) This device may not cause harmful interference, and
- (2) this device must accept any interference received, including interference that may cause undesired operation.

Any Changes or modifications not expressly approved by the party responsible for compliance could void the user's authority to operate the equipment.

Note: This equipment has been tested and found to comply with the limits for a Class B digital device, pursuant to part 15 of the FCC Rules. These limits are designed to provide reasonable protection against harmful interference in a residential installation. This equipment generates uses and can radiate radio frequency energy and, if not installed and used in accordance with the instructions, may cause harmful interference to radio communications. However, there is no guarantee that interference will not occur in a particular installation. If this equipment does cause harmful interference to radio or television reception, which can be determined by turning the equipment off and on, the user is encouraged to try to correct the interference by one or more of the following measures:

- Reorient or relocate the receiving antenna.
- Increase the separation between the equipment and receiver.
- Connect the equipment into an outlet on a circuit different from that to which the receiver is connected.
- Consult the dealer or an experienced radio/TV technician for help.

*RF warning for Mobile device:

This equipment complies with FCC radiation exposure limits set forth for an uncontrolled environment. This equipment should be installed and operated with minimum distance 20cm between the radiator & your body.