



Irrigation Timer

Huizhou Echeng Technology Co., Ltd

User Manual

Model: XE-D01



**A brand that focuses on innovation,
intelligence, environmental protection, and ecology.**

WiFi Irrigation Timer

Larger view of products



Mounting method:

The irrigation equipment can be put horizontally or vertically. When placing the irrigation equipment, please notice place in the correct direction to avoid water accumulation inside the equipment.

1. Model XE-WD01



2. Model XE-WW02



Add APP to control the process

Download the app on your mobile phone Register and log in to your account Connect your device to the network Program settings

Download App

Search for "Smart Life" or "Doodle Smart" app in the mobile app market to download and install.

You need to allow access to the phone's default permissions when logging into the software.

Registration and Login

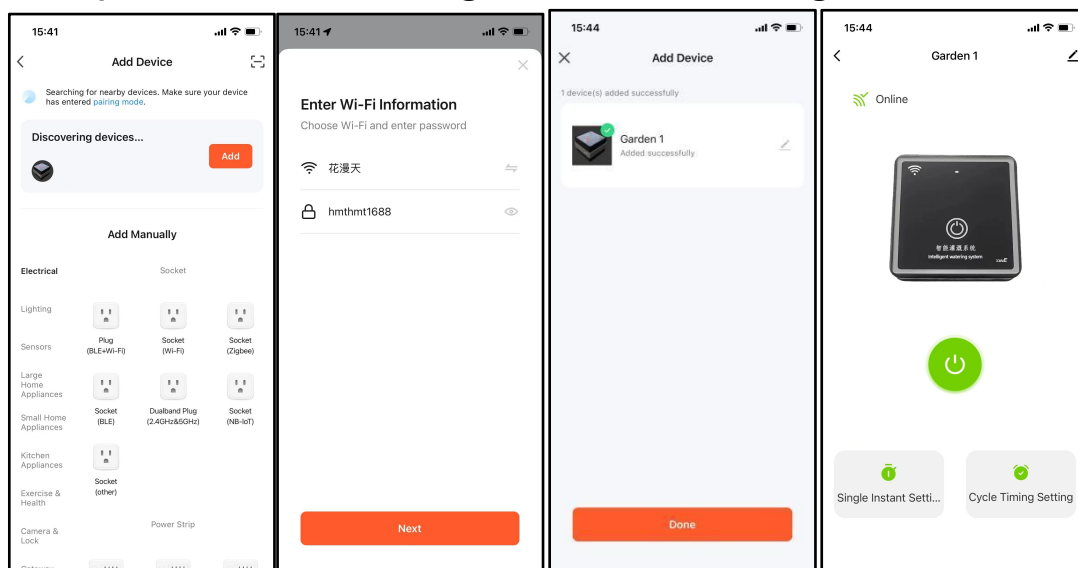
Users can register with his mobile number or email address. If the user has already registered an account, you can log in by entering your account and password.



Equipment Networking

Plug in the Type-C power cord and the green light at the top will be turned on. The different lighting shows means the device is in different modes, as follows:

1. Always on: The device is connected.
2. Blinking: Distribution network status.
3. Off: The device is offline or disconnected.
4. Ensure that both the **wireless WiFi data and Bluetooth functions** are turned on at the mobile phone end, and the WiFi signal is 2.4GHZ or a mixture of 5G and 2.4G.
5. After plugging in the power cord, press the device for 5 seconds, the green light blinking. Open the "Tuya Intelligence" APP. Then, enter your WI-FI account and passwords to add device. The app will automatically search for the device. Then, access the device home screen after entering the WiFi password and adding the network configuration.



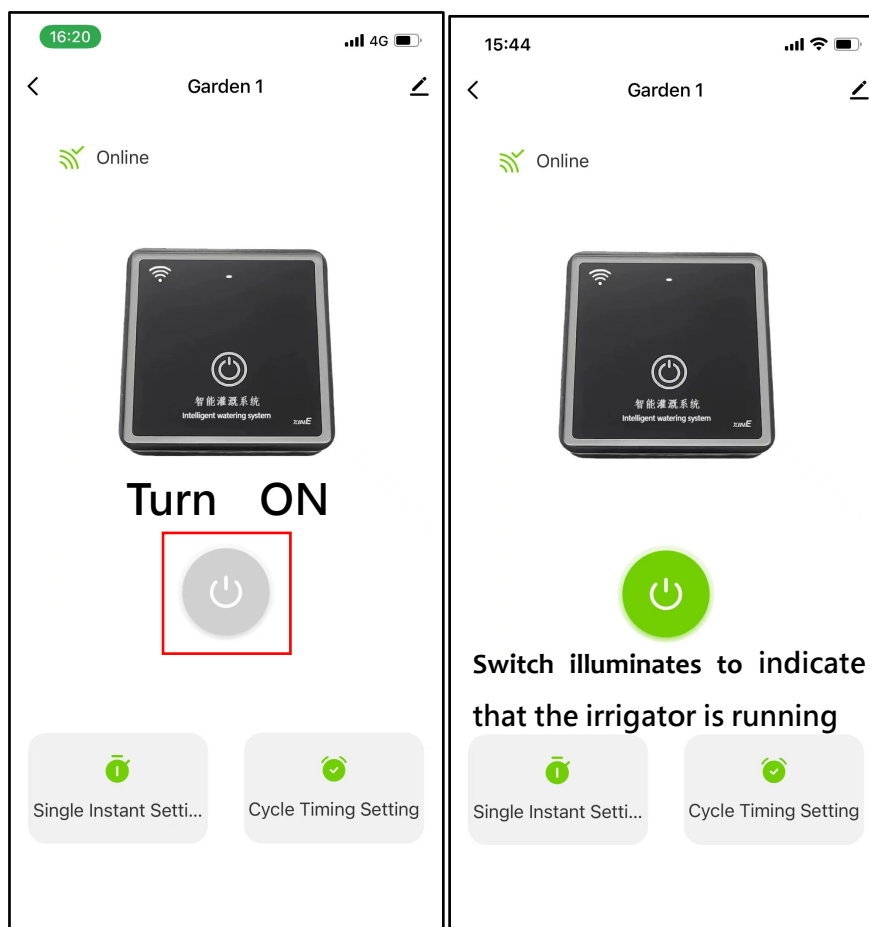
If the device is still unable to connect to the network, please refer to the following:

1. Ensure that both WiFi and Bluetooth are on and in a 2.4Hz network.
2. All permissions have been allowed and the wireless network password is correct when installing the app.
3. The device is in wiring mode and the WiFi signal is flashing.

If it does not blink, long press the on/off button for 5 seconds to reset the device, the device ensures that it blinks and reconnects once.

Manual control

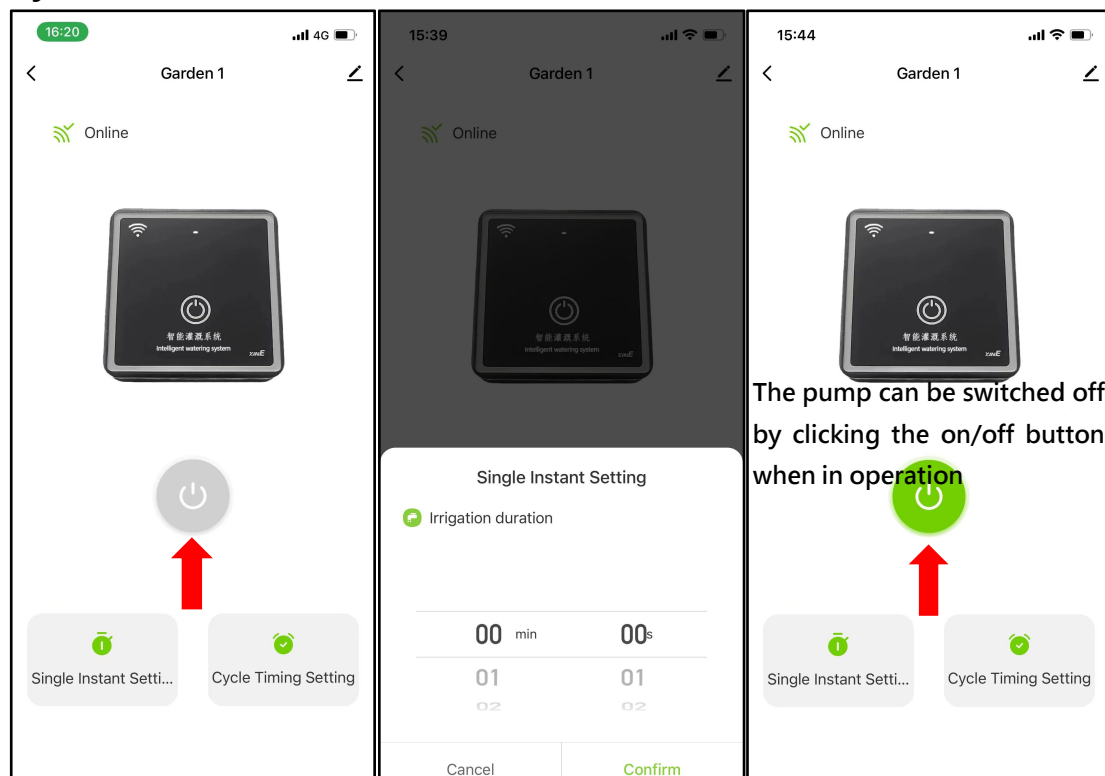
Manually tap the on/off button in the APP to start or switch off the pump.



Program settings

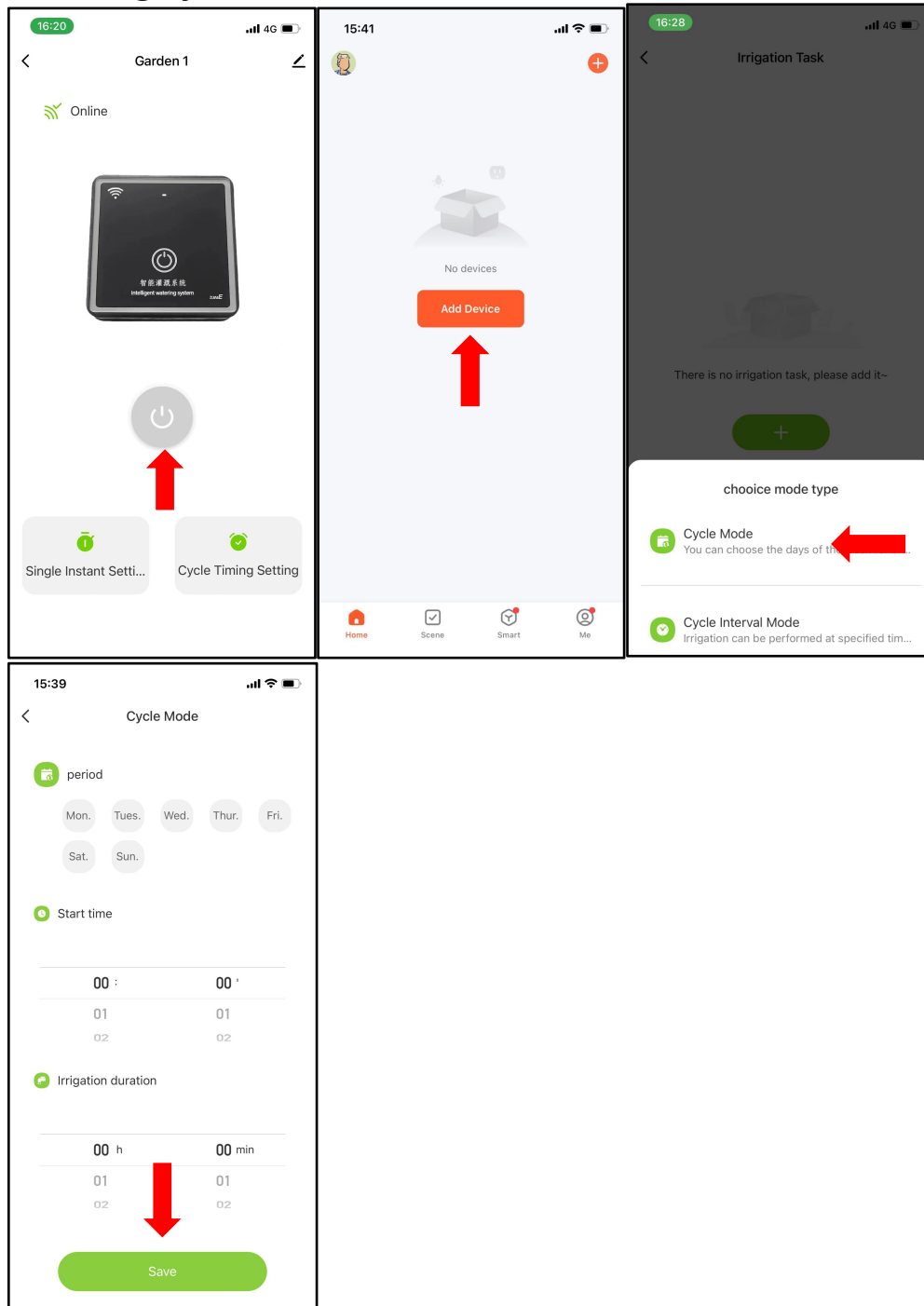
I. Single instant setup

Clicking on the single instant setting will bring up the watering duration screen, which you can set according to your needs. Once set, click on the confirmation button and the device will irrigate according to the programmed time set by the user.



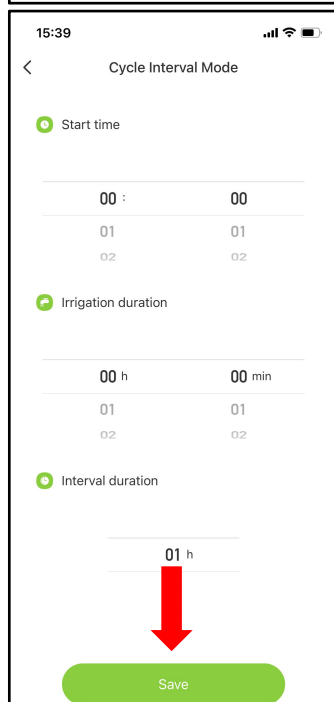
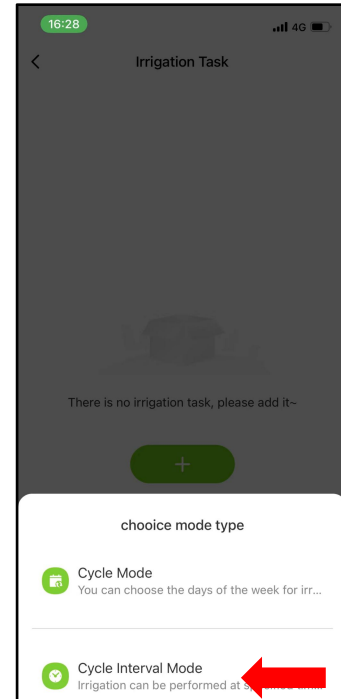
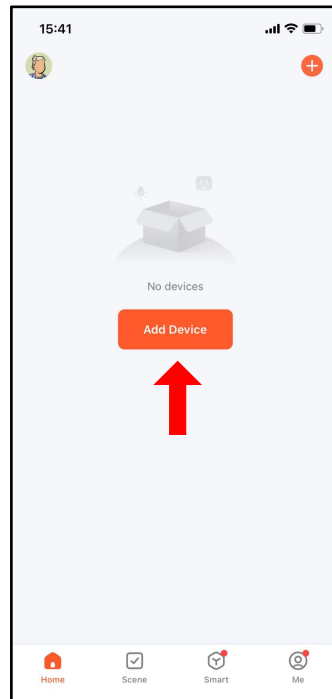
II. Cyclic Cycle Model

In interval mode, you can set the day of the week , the length of the irrigation period and the date to suit your needs.Finally, click on save and the device will automatically start the watering cycle.



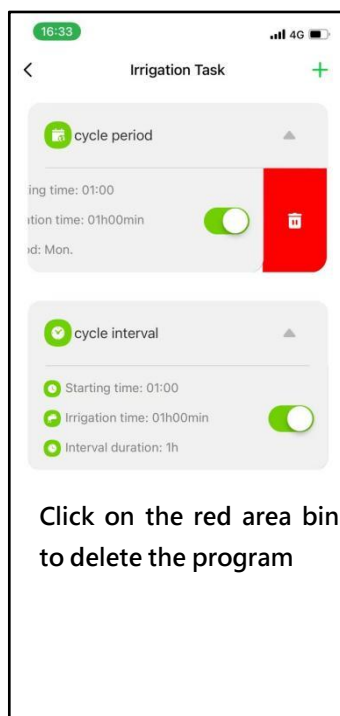
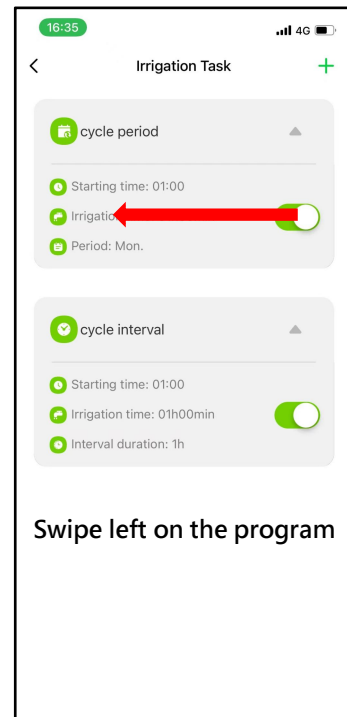
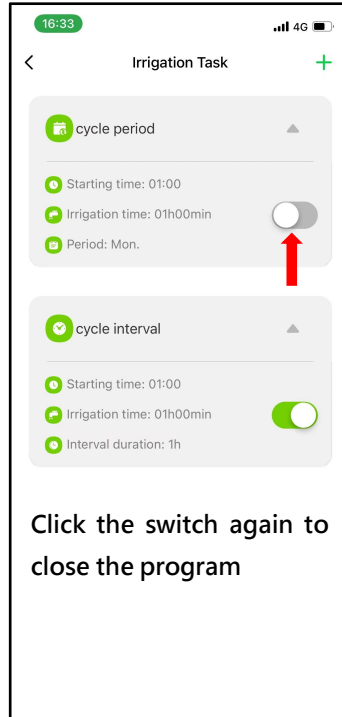
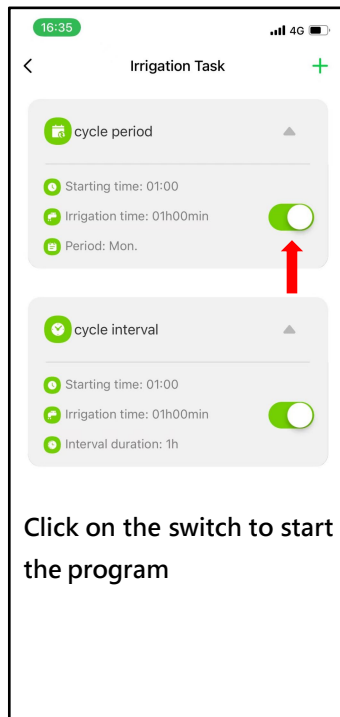
III. Cyclic interval pattern

In interval mode, you can set the start time, irrigation duration and interval duration according to your needs. Once set, click on Save and the device will automatically start watering in a cycle.



IV. Mode content settings

You can "turn on" or "turn off" the programs you have set up by clicking on the switch. If you need to delete a program, slide it to the left and click on the red bin to delete it. You can add a new program by clicking on the "+" button in the top right corner. You can set up to ten irrigation tasks.



Cautions

1. If you find that the spray mist is not in good condition, check the spray nozzles for blockage by foreign objects. Regular cleaning of the spray nozzles of foreign matter will maintain a good spraying effect.
2. The container containing the water should be lower than the nozzle to prevent siphoning, although the nozzle is leak-proof and in rare cases siphoning may still occur.
3. If the temperature is below 4°C or above 50°C, discontinue use of the appliance and store it properly.

Product Parameters

Device name: XINE WiFi Irrigation Timer

Dimensions: 95mm x 150mm x 95mm

Operating power: Three 7-cell batteries or USB, Type-C

WiFi: 2.4GHz

Working Temperature : 0.05-0.8Mpa

Working environment: 1-50°C

Implementation standard: GB/T21402-2008



FCC ID: XXXXXXXXXX

MADE IN CHINA

This device complies with part 15 of the FCC Rules. Operation is subject to the following two conditions: (1) this device may not cause harmful interference, and

(2) This device must accept any interference received, including interference that may cause undesired operation.

Changes or modifications not expressly approved by the party responsible for compliance could void the user's authority to operate the equipment. This equipment has been tested and found to comply with the limits for a Class B digital device, pursuant to Part 15 of the FCC Rules. These limits are designed to provide reasonable protection against harmful interference in a residential installation. This equipment generates uses and can radiate radio frequency energy and, if not installed and used in accordance with the instructions, may cause harmful interference to radio communications. However, there is no guarantee that interference will not occur in a particular installation. If this equipment does cause harmful interference to radio or television reception, which can be determined by turning the equipment off and on, the user is encouraged to try to correct the interference by one or more of the following measures:

- - Reorient or relocate the receiving antenna.
- - Increase the separation between the equipment and receiver.
- - Connect the equipment into an outlet on a circuit different from that to which the receiver is connected.
- - Consult the dealer or an experienced radio/TV technician for help.

This equipment complies with the FCC RF radiation exposure limits set forth for an uncontrolled environment. This equipment should be installed and operated with a minimum distance of 20cm between the radiator and any part of your body.