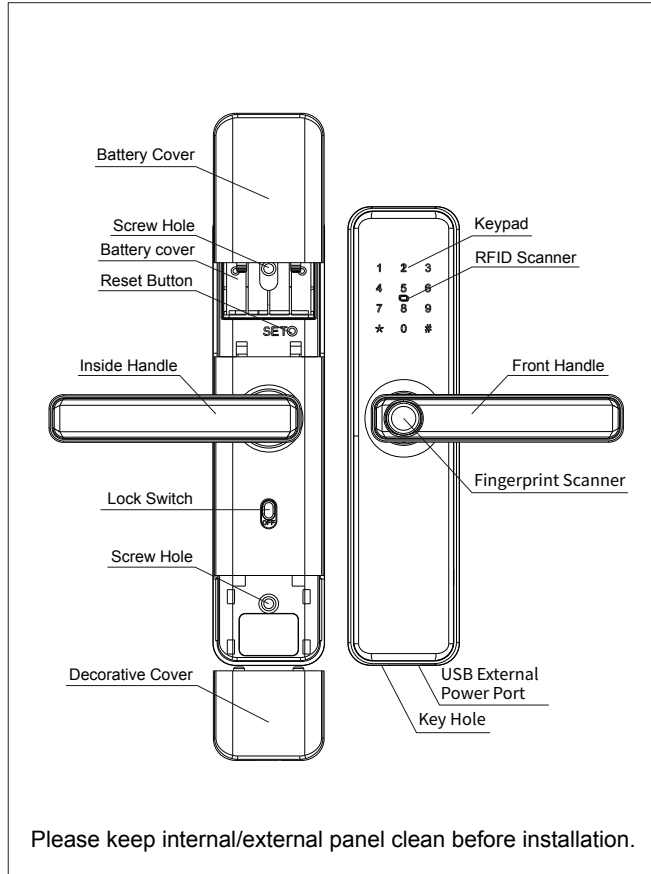


User Manual

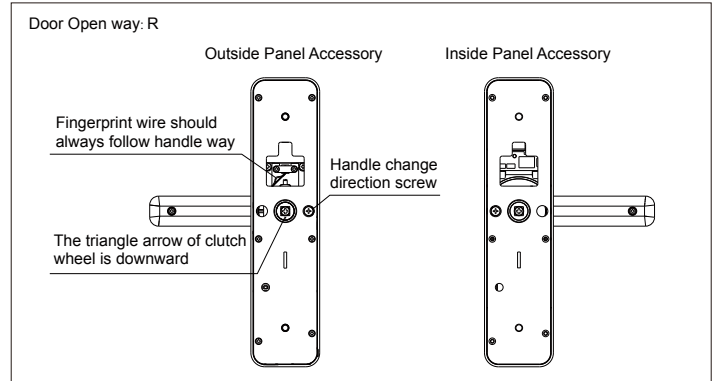
F1 Smart Door Lock



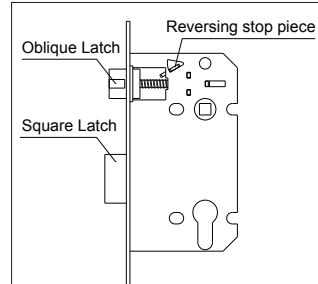
Product Layout:



Change Handle Direction



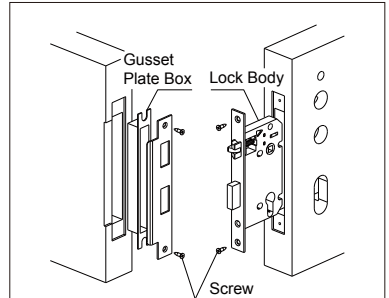
Lock Body Change Direction



When install lock body, Oblique latch should always on top at same time square latch should at bottom, oblique facing door closing way otherwise adjust it and steps as following

1. Take Reversing stop piece upward.
2. Push in oblique latch in and turn 180 degree.
3. Take oblique latch out.

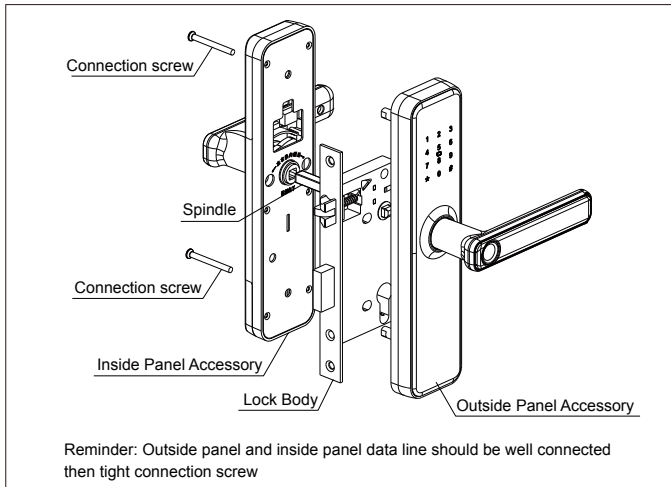
Lock Body and Gusset plate Installation



Install the door buckle plate on the door frame directly opposite the lock body. The hole of the buckle plate shall correspond to the tongue of the lock body. If there is any deviation, it must be adjusted to the appropriate position.

Use 2 screws tight lock body on frame make sure lock body and door panels parallel

Installation Layout



Product Features:

- Multiple ways to access: Fingerprint, Pin Code, RFID Card, & Mechanical Key.
- Fingerprint: Advanced semiconductor sensors with 360° scanner.
- Pin code: Elegant keypad with code scrambling feature. Before correct password user can input 12 digital which can avoid password peeping.
- Dual authentication mode: Fingerprint mode (master + common user), fingerprint + pin code, fingerprint + RFID card mode, After this setting dual authentication will be required to access the lock at same time to open the door, suitable for high security access.
- Master /User management: Master has the right to make different user. Lock can have 9 master user (can be fingerprint, pin code or card). Total user capacity is 300.
- Door Bell: When lights are off "0" can be used as door bell.
- Alarm: Tamper, low battery alarm and password protection.
- External power supply: Can use power bank with 5V for emergency power supply.

Remark:

1. After installation of lock please reset lock to factory default mode.
2. Handle is the key part for opening and closing door, and its flexibility ratio directly influences the usage of door lock, hence, don't hang articles on handle.
3. Gently press fingerprint on the fingerprint sensor for registration of fingerprint. Please don't press with great force to prevent scratching the fingerprint sensor.
4. This lock uses 4 AAA high-energy alkaline batteries (1.5V). When it prompts "the voltage is low, please replace battery" for the first time, the door can be opened for about 100 times as per different battery capacities; At this time, the battery should be replaced promptly to avoid inconvenience due to the exhausted battery.
5. After continuous 5 times wrong fingerprint, card or code usage lock will be locked for 90 seconds.

Operations:

1. **Reset factory default:** Press RESET at back of lock for 5 seconds, voice will prompt reset succeed.
2. **Lock Settings:**
 - 2.1 **Administrator Settings:** Touch screen keypad for lights on and press # for 2 seconds, and press 1 for Administrator settings
 - Press 1 again for **addition of Master User**.
 - Fingerprint: Scan Fingerprint 5 times on Fingerprint scanner for addition of Fingerprint as master User. After successful addition, voice prompts "1X1X Successful". Here 1X1X- represents serial # of registered user.
 - RFID Card: Scan RFID card in front of RFID Scanner. After successful addition, voice prompts "1X1X Successful".
 - Pin Code: Enter 8 Digit Pin Code -> Press # -> Repeat Pin Code -> Press # After successful addition, voice prompts "1X1X Successful".
 - To go back to the main menu press *
 - Press 2 for **Deletion of Master User**.
 - System will prompt "Please input number"
 - Please input respective user number "1X1X" to delete
 - Press # to confirm
 - 2.2 **User Settings:** Touch screen keypad for lights on and press # for 2 seconds, and Voice prompts "Please input administrator information". Verify the administrator access verification and press 2 for User settings.

- Press 1 again for **User Addition**
- Finger Print: Scan Fingerprint 5 times on Fingerprint scanner for addition of Fingerprint as master User. After successful addition, voice prompts "1X1X Successful". Here 1X1X- represents serial # of registered user.
- RFID Card: Scan RFID card in front of RFID Scanner. After successful addition, voice prompts "1X1X Successful".
- Pin Code: Enter 8 Digit Pin Code-> Press # -> Repeat Pin Code-> Press # After successful addition, voice prompts "1X1X Successful".
- To go back to the main menu press *.
- Press 2 for **User Deletion**
- System will prompt "Please input number".
- Please input respective user number "1X1X" to delete. Press # to confirm.

2.3 System Settings: Touch screen keypad for lights on and press # for 2 seconds, and Voice prompts "Please input administrator information". Verify the administrator access verification and press 3 for System settings.

- Press 1 again for **Time Settings**
- Lock will share current time updated on the lock
- To Change enter new date & time in the format YYYYMMDDHHMM and press #, where YYYY represents Year, MM- Month, DD- Date, HH- Hour & press #, where YYYY represents Year, MM- Month, DD- Date, HH- Hour & MM Minutes. To go back to the main menu press *
- Press 2 for **Lock Number Modification**
- Lock Number means number assigned by you to a particular lock if you have installed multiple locks at your place.
- Lock will share current assigned number.
- To Change enter new lock number (4 Digits) & press #. Lock will prompt new number for confirmation. To go back to the main menu press *
- Press 3 for **Voice Settings**
- Press 4 to decrease and Press 6 to increase the volume of lock.
- Press 4 for **Unlock Mode**
- Unlock Mode means to allow opening of lock by single or dual authentication. In Single authentication, any single authorized user can open the lock, however in Combination Unlock access credentials of two authorized users are required for lock opening.
- Press 1 for Single Unlocking Access
- Press 2 for Dual or Combination Unlock
- Press 3 for Time to Unlock (Time period for lock to auto relock again).
Usual auto re- lock period is 6 Seconds after door is closed. Range is 1-9 Seconds.
(Press 2 to increase time to re-lock and Press 8 to reduce time to re-lock)

2.4 Reboot System: Touch screen keypad for lights on and press # for 2 seconds, and Voice prompts "Please input administrator information". Verify the administrator access verification and press 4 for System Reboot.

- Lock will ask to authorize administrator access.
- After successful verification of administrator password- lock will reboot itself and prompt initialization successful.

2.5 Information Inquiry: Touch screen keypad for lights on and press # for 2 seconds, and Voice prompts "Please input administrator information". Verify the administrator access verification and press 5 for Information inquiry.

- Press 1 again for **Record Enquiry**
 - Lock will share last usage record. To go back to the main menu press *
- Press 2 for **Information on User**
 - Enter the # of user for which information is required
 - Lock will share registration time & date of the user for which information is required. To go back to the main menu press *.
- Press 3 for **Storage Capacity**
 - Storage Capacity will indicate number of number of registered fingerprint, pin & RFID card users and # of available capacity for user addition.

Remark:

1. All fingerprint need to be scanned 5 times for addition.
2. Password is of 8 digits and has to be entered 2 times for addition.
3. Card is registered after voice prompts "add user" & scan card near RFID scanner for confirmation.
4. After successful registration press * to exit.
5. When Deleting fingerprint, one master user in fingerprint has to be left.

3 Remote(select):

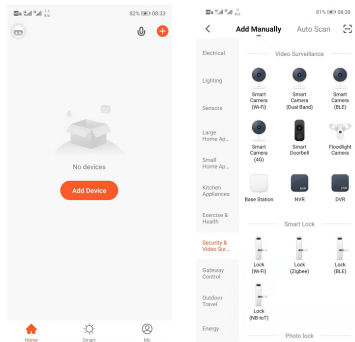
- In the add user interface, gently press the unlock key of the remote control, and after hearing the "beep", the voice will broadcast "input succeeded".
- Unlock from remote can remote unlock(vertical 12M, cross direction 18M).

TUYA Smart Introducing:

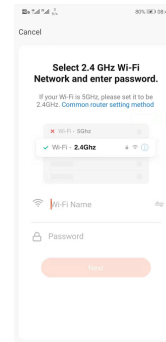
- Unlocking record: Unlock way+ unlock ID +timing, User can check record from App in 12 month.
- Offline record supplementary biography: After on line, device will upload offline record to cloud.
- Alarm: Low battery, wrong password, wrong fingerprint, wrong card and anti prying alarm etc...
- Time synchronization: Lock time and server keep same, support global time zone + winter / summer time switch.
- Remote unlocking: Press bell sign trigger remote unlocking request, app response unlock or refuse.
- Hijack alarm: Can settle down fingerprint, password and card to be coercion information, by using coercion information can get hijack information.

TUYA Smart Connecting:

1. Search Tuya from app store and register.
2. Open app and access it and follow below way add lock.



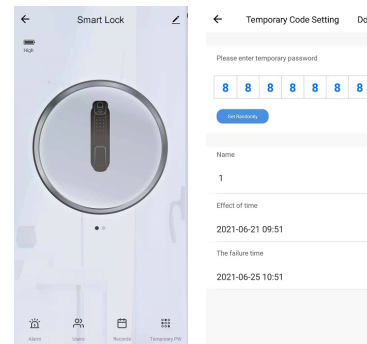
3. Choose router and enter WIFI password.



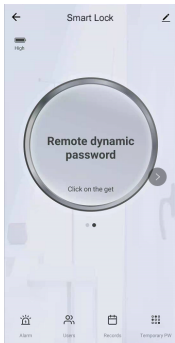
- 4.4. Long press # then press 1 enter into manage then press 3 for network setting and last press 1 for connecting.

Add temporary code setting:

1. After add temporary code need to try on lock then finished
2. Max. Support 10 group of code and code can be audit or delete
3. Temporary code can be settle down by period



Dynamic code: Can be get from Dynamic code page



FCC Caution:

This device complies with part 15 of the FCC Rules. Operation is subject to the following two conditions: (1) This device may not cause harmful interference, and (2) this device must accept any interference received, including interference that may cause undesired operation.

Any Changes or modifications not expressly approved by the party responsible for compliance could void the user's authority to operate the equipment.

Note: This equipment has been tested and found to comply with the limits for a Class B digital device, pursuant to part 15 of the FCC Rules. These limits are designed to provide reasonable protection against harmful interference in a residential installation. This equipment generates uses and can radiate radio frequency energy and, if not installed and used in accordance with the instructions, may cause harmful interference to radio communications. However, there is no guarantee that interference will not occur in a particular installation. If this equipment does cause harmful interference to radio or television reception, which can be determined by turning the equipment off and on, the user is encouraged to try to correct the interference by one or more of the following measures:

- Reorient or relocate the receiving antenna.
- Increase the separation between the equipment and receiver.
- Connect the equipment into an outlet on a circuit different from that to which the receiver is connected.
- Consult the dealer or an experienced radio/TV technician for help.

The device has been evaluated to meet general RF exposure requirement.