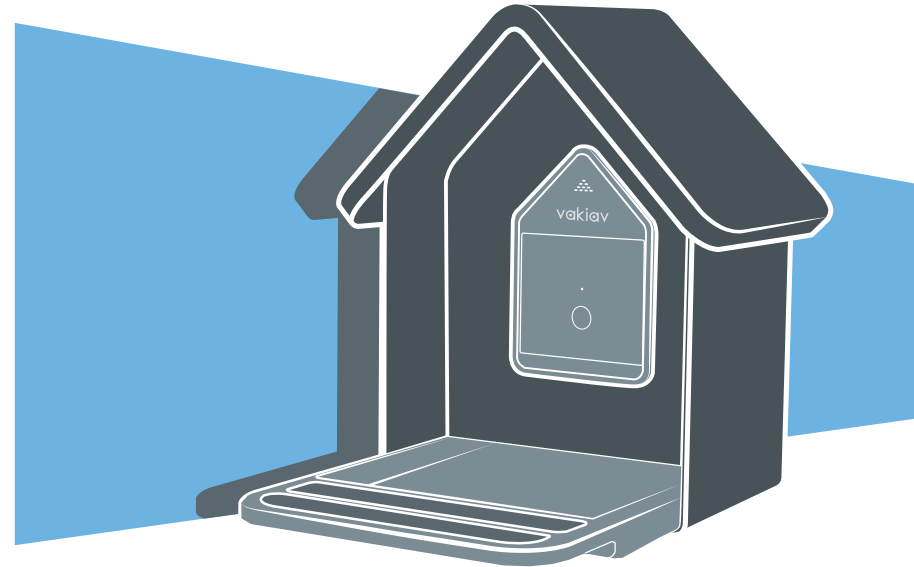




Smart Bird Feeder

Model: VK-G1



Contact us →

Facebook.com/Vakiav
Twitter.com/Vakiav
Instagram.com/Vakiav

www.vakiav.com

VK_G1_EN

User Manual

This device complies with part 15 of the FCC rules,operation is subject to the following two conditions:

- 1)this device may not cause harmful interference and
- 2)this device must accept any interference received, including interference that may cause undesired operation;

NOTE: this equipment has been tested and found to comply with the limits for a Class B digital device, pursuant to Part 15 of the FCC Rules. These limits are designed to provide reasonable protection against harmful interference in a residential installation. This equipment generates, uses and can radiate radio frequency energy and , if not installed and used in accordance with the instructions, may cause harmful interference to radio communications.

However ,there is no guarantee that interference will not occur in a particular installation.

If this equipment does cause harmful interference to radio or television reception, which can be determined by turning the equipment off and on, the user is encouraged to try to correct the interference by one or more of the following measures;

Reorient or relocate the receiving antenna.

Increase the separation between the equipment and receiver.

Connect the equipment into an outlet on a circuit different from that to which the receiver is connected.

Consult the dealer or an experienced for help.

Pursuant to section 15.21 of the FCC rules, changes or modifications to a product by the user that are not expressly approved by the party responsible for compliance could void the user’s authority to operate the equipment.

The device meets the FCC radio Frequency Emission Guidelines, Information on the product is on file with the FCC and can be found by inputting such products FCC ID(which can be found on the device)into the FCC ID Search form available at <https://www.fcc.gov/oet/ea/fccid>

The party responsible for FCC compliance is:

VANIMAGE CO LTD 92 CORPORATE PARK STE C 204 IRVINE, CA 92606

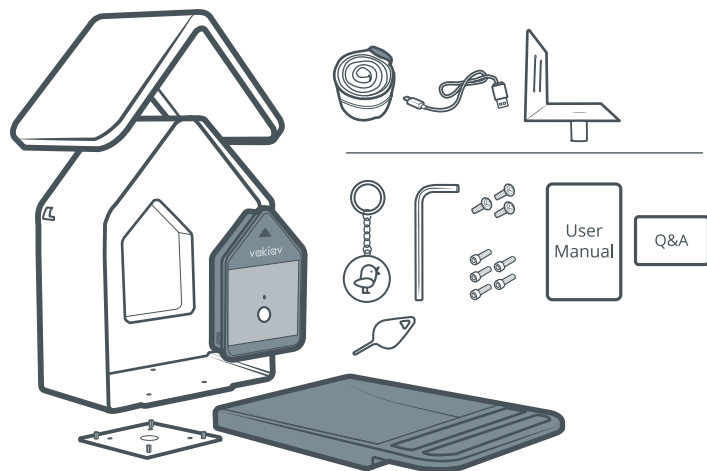
FCC Radiation Exposure Statement

This device complies with FCC radiation exposure limits set forth for an uncontrolled environment and it also complies with Part 15 of the FCC RF Rules. This equipment must be installed and operated in accordance with provided instructions and the antennas used for this transmitter must be installed to provide a separation distance of at least 20 cm from all persons and must not be co-located or operating in conjunction with any other antenna or transmitter. End-users and installers must be provided with antenna installation instructions and consider removing the no-collocation statement.

SPECIFICATIONS

AI Recognition	Support
Resolution	5M 1080P
Transmission Mode	2.4G WIFI
Number of connected devices	> 10/user
Battery Capacity	3.7V 5200mAh Li-ion battery
Input Current	5V

What's in the box?



1 .Main Part

2 .Roof

3 .Monitor

4 .Tray

5 .Key Ring

6 .Base

7 .Holder

8 .Tie

9 .Charging Cable

10 .Hex Wrench

11 .Hexagon Socket Head
Cap Screw M4*6 X5

12 .PWB Screw 4*20 X3

13 . User Manual

14 . Q&A Card

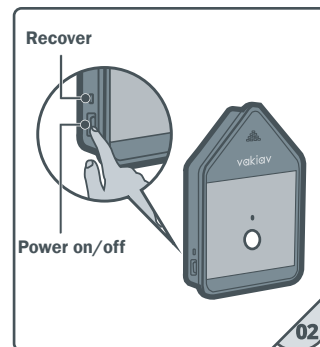
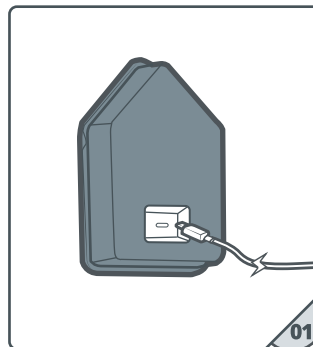
15 . Control pin

Button Instruction



Note:

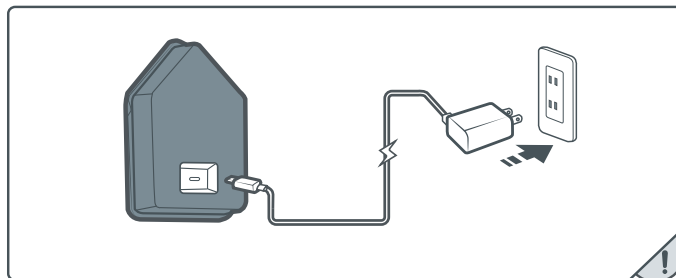
- 1.Flip the switch up to turn on the power.
- 2.Flip the switch down to turn off the power.
- 3.Depress the Recover button to recover mode.



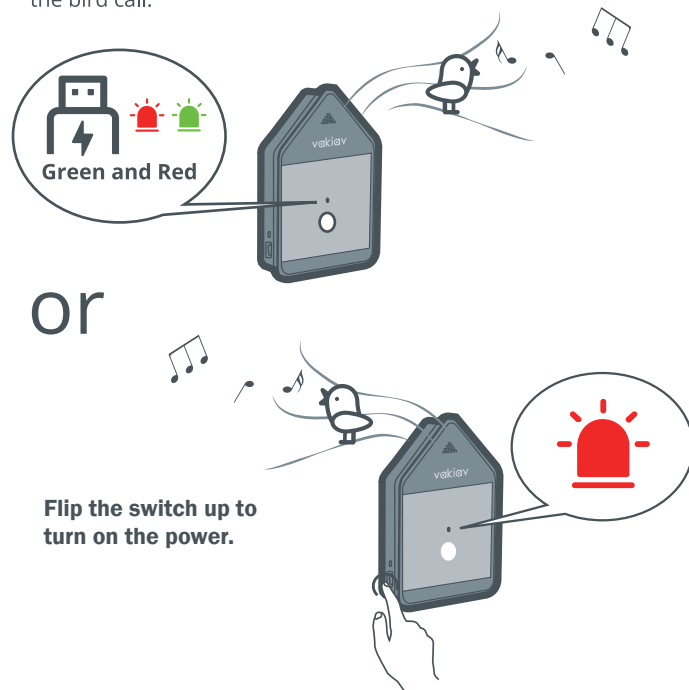
Connect the Vakiav



Note: Fully charge the device before use.



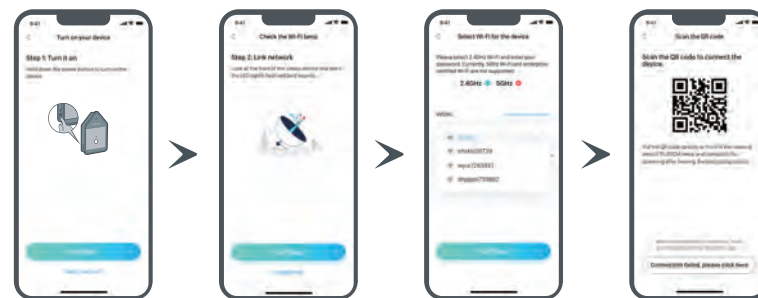
- 1** After being connected to the charging cable, the device will auto power on and enter the pairing state. At this time, you can hear the bird call.



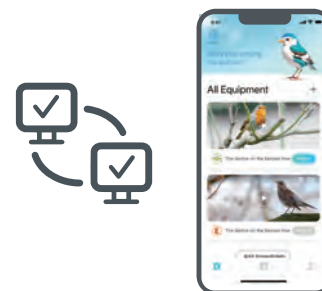
- 2** Download Vakiav APP.



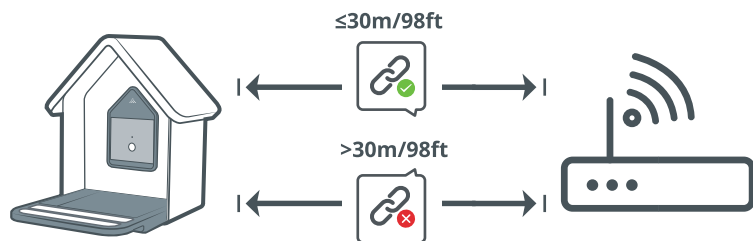
- 3** Open the Vakiav APP and add the device.



- 4** The connection succeeds.



Position the Vakiav

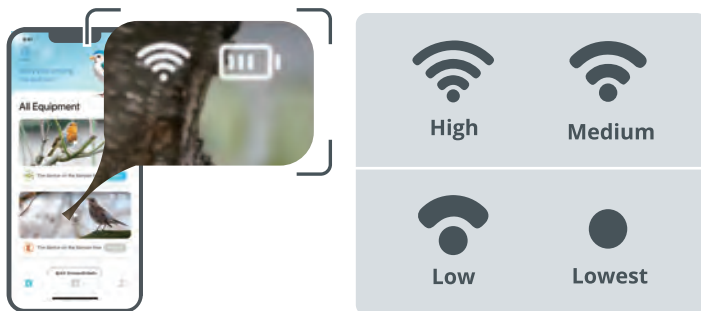


Caution

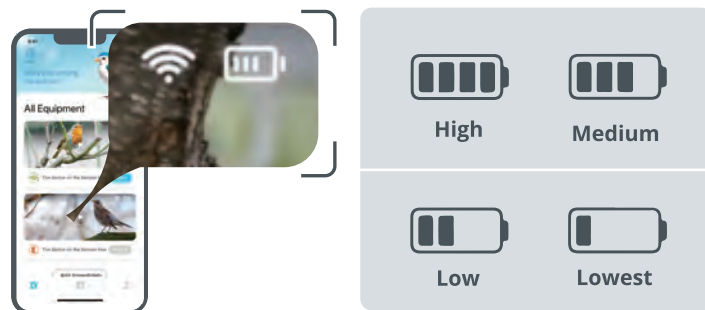
- Please avoid covering the illustrated area to achieve normal range during operation.

Status Check

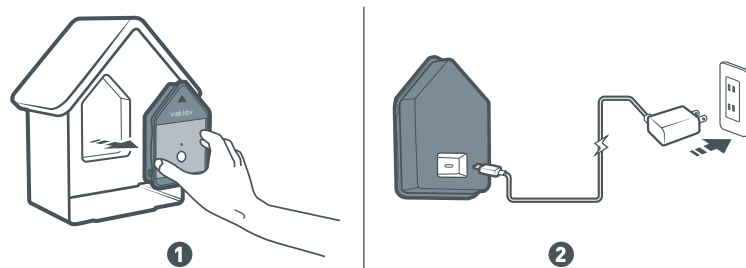
Check the WIFI signal strength on the Vakiav APP.



Check the battery level on the Vakiav APP.



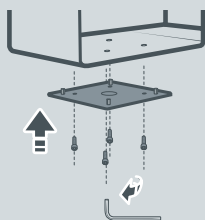
Caution: If the battery is low, charge it in time.



Installation



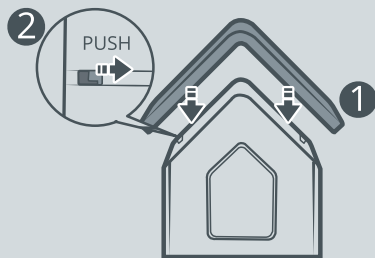
1. Install the feeder base



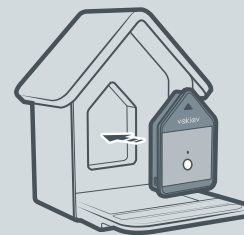
2. Place the tray



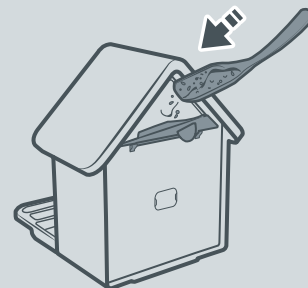
3. Install the feeder roof



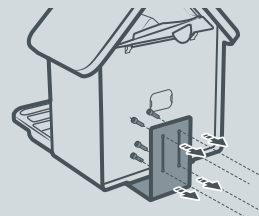
4. Place the monitoring box



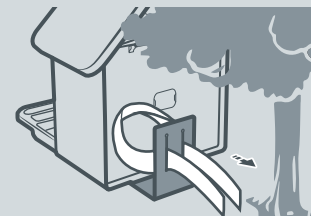
5. Add the bird seed



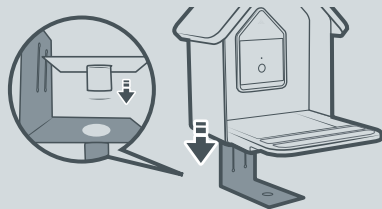
6. Fix the holder through screws or ties



or

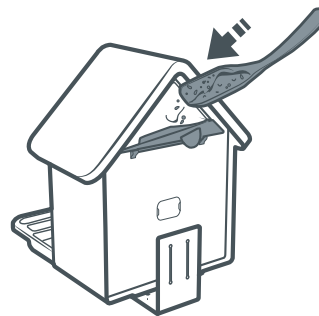


7. Put in the bird
viewer Vakiav



How to Add Bird Seed and Wash the Tray?

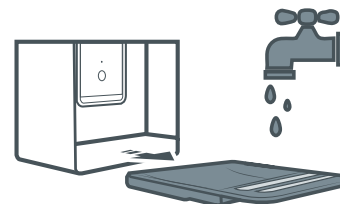
Add Bird Seed



Open the back window
and pour in the bird seed.

01

Cleaning



Pull out the tray to wash.

02

Technological innovation makes life better!



Facebook.com/Vakiav



Instagram.com/Vakiav



Twitter.com/Vakiav