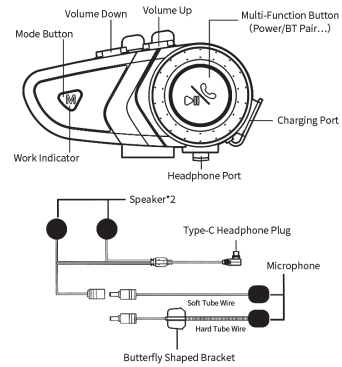
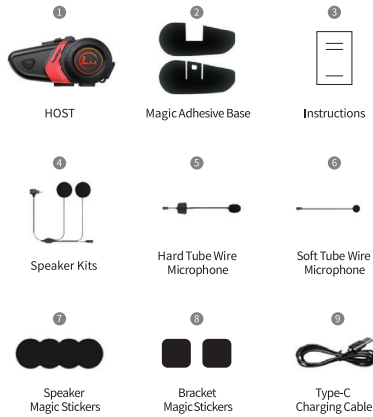


Motorcycle Helmet Headset LX3



Packing List



HOW TO USE THE Product



Multi-Function Button Operation Instructions:

Long Press "3" Seconds to Power On/Off
Long Press "3" Seconds to Power On and Enter Pairing Status, You Will Hear: "Power On ..." Prompt Tone, After the Pairing is Successful, the Blue LED Flashes Once Every 6 Seconds, You Will Also Hear a Prompt Tone for Successful Pairing, The Following Functional Operations Can be Performed:
Answer a phone call (When Incoming Call, Short Press to Answer Call)
Terminate the call (During a Call, Short Press)
Refuse to answer phone calls (Press "3" Seconds During Incoming Call to Reject Call)
Music play/pause (Short Press)

"+" Button

Long Press (Volume Up)
Short Press (Play Next)
Double Click (Turn on and off automatic answering function)

"-" Button

Long Press (Volume Down)
Short Press (Play Previous)
Double Click (Wake up the voice assistant function)

"M" Button

Short Press Control Color Changing Lights (Default breathing light, Light-slow flashing, fast flashing, Turn off color changing light)

Indicator LED Description

Power on status (Blue led fast flashing)
BT successfully paired (Blue led flashes once every 6 seconds)
During charging (Red led-light on)
After fully charging (Red led-light off and green led-light on)

Fault Answer

Q. No sound from speakers or microphones
A. Please make sure the microphone male and female connectors well plugged in (You can try to push the male head inward and push it hard).
Q. No sound from microphone
A. Are the microphone male and female connectors plugged in?
Q. How to turn off and on "automatic answering function"?
A. (under pairing status), double-click the "+" button
Q. How to turn on Siri function?
A. Double click on the "-" button
Q. How to turn off the color-changing light
A. Short Press "M" button?
Q. Unable to charge
A. Please make sure the charger is within the appropriate voltage range and the charging cable indicates Type-C of the standard protocol (please use the factory charging cable).

Matters Needing Attention

Do not touch the product with sharp objects to avoid scratch or damage
Do not expose the product to open fire to avoid explosion hazard
Do not attempt to disassemble the product to avoid product damage
If the product is not used for a long time, please store it in a dry place and give the product regular charging (once a month) to ensure the normal operation of the product

Installation Steps for Clamp Base

Helmet edges (<9mm) use clamp base



Take out the product from the packaging box Gently clip the edge of the helmet by iron clip, push outward and then push upwards with force



Installation Completed

Installation Steps for Adhering the Base



Take out the Magic Adhesive Base from the packaging box, peel off the hook-facing magic sticker along the edge



Take out the product from the packaging box and remove the clamp base; push the Plastic Buckle Position outside and then push the clamp base down, to remove the clamp base



Move the Magic Adhesive Base upwards and snap it into place



Flattly apply the torn hook-face magic sticker to the curved position of the helmet



Align the female ports of the Magic Adhesive Base with male buckle positions and place it flatly into the machine



Installation Completed

Install Microphone Kits

Hard Tube Wire suitable for (most helmets, such as full helmets and barefaced helmet, off-road helmet, retro helmet)



Square magic sticker attached to the inside part of the helmet near the face



Butterfly shaped bracket adhere to the square magic sticker

Soft Tube Wire (microphone sleeve) suitable for full helmets



Square magic sticker attached to the inside part of the helmet near the mouth



Soft Tube Wire (microphone sleeve) adhere to the square magic sticker

Install Speaker Kits



Remove the helmet lining Attach the Speaker Magic Sticker surface at the ear positions of the helmet



Adhere the speakers to the Speaker Magic Sticker (short-line speaker is attached to the left or on one side of the machine)



Align and insert the male and female slots, then rotate and secure them Arrange the connecting wires and place them in the helmet



Insert the Type-C headphone plug into the headphone port

This device complies with part 15 of the FCC Rules. Operation is subject to the following two conditions: (1) this device may not cause harmful interference, and (2) this device must accept any interference received, including interference that may cause undesired operation.

Any changes or modifications not expressly approved by the party responsible for compliance could void the user's authority to operate the equipment.

NOTE: This equipment has been tested and found to comply with the limits for a Class B digital device, pursuant to Part 15 of the FCC Rules. These limits are designed to provide reasonable protection against harmful interference in a residential installation. This equipment generates, uses and can radiate radio frequency energy and, if not installed and used in accordance with the instructions, may cause harmful interference to radio communications. However, there is no guarantee that interference will not occur in a particular installation.

If this equipment does cause harmful interference to radio or television reception, which can be determined by turning the equipment off and on, the user is encouraged to try to correct the interference by one or more of the following measures:

- Reorient or relocate the receiving antenna.
- Increase the separation between the equipment and receiver.
- Connect the equipment into an outlet on a circuit different from that to which the receiver is connected.
- Consult the dealer or an experienced radio/TV technician for help.

The device has been evaluated to meet general RF exposure requirement. The device can be used in portable exposure condition without restriction